



# BMW 3er 335i

VIN NO WBA3F91030F299279  
Registration Number 030F299279



MOT Date	Number of Owners	Number of Keys	Odometer Reading
-	2	2	152446 km
Last Service	Last Service Mileage	First Registration Date	Country First Registered
-	-	2013-11-05	-

## Inspection Report Summary

Customer	BCA Online	Report Number	P20250910110325
Inspection Date / Place	2025-09-10 / BCA Neuss	Cosmetic Grade	1

## Vehicle Summary

Vehicle Condition	Runner	VAT Type	Margin
Fuel Type	Petrol	Road Worthy	Yes
Colour	Blue	Engine Size (cc)	2979
Engine Size	3.0	No of Doors	4
Body Type	Sedan	Drive Train	Rear
Seat Colour		No of Seats	5
Seat Covering Name	Schwarz	Seat Covering	Synthetic Leather
Charging Cables		NEDC CO2 Rating (q/km)	186
Gearbox Type	Manual		

## Vehicle History & Documents

Service Book Available	-	Next Service Mileage	km
Previous Usage		Imported	No
Manufacturer Warrenty			











## Equipment

Airbag Status	Anti-lock braking	Bluetooth telephone interface	Digital Radio
Front parking sensors	Remote adjusting wing mirrors	Reversing Camera	Stability control
Electrically adjustable seats	Radio	Alloys wheels	Bi Xenon Headlamps
Cruise control	Enhanced speaker system	Head up Display	Remote central locking
Satellite navigation	CD Player	Leather steering wheel	Rear parking sensors

## Equipment Details

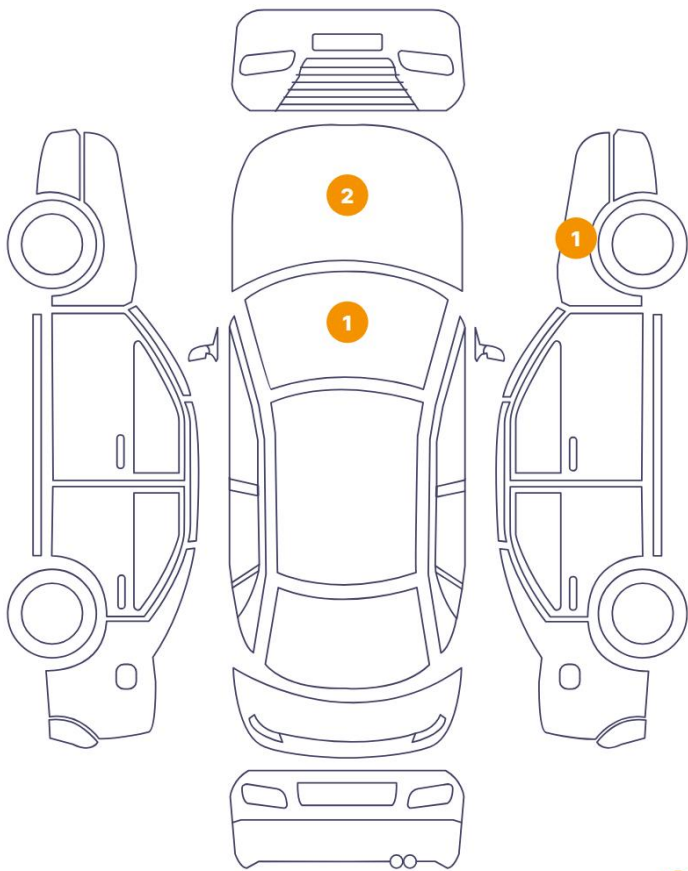
Air Conditioning	Dual Zone Climate Control	Alloy Wheel Size	18
Enhanced Speaker System	Harman/kardon	Seat Heating	Front and Rear

## Wheels & Tyres

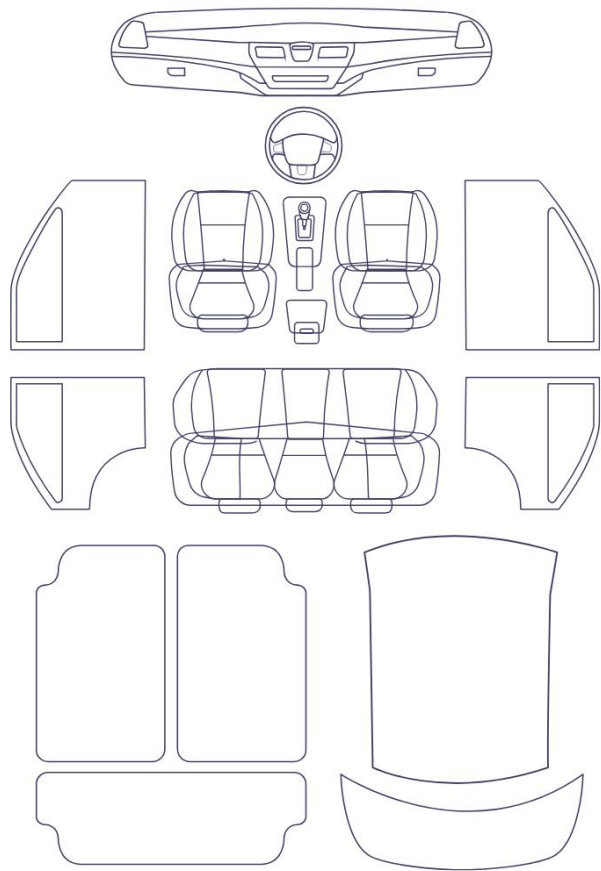
Right Front Tyre Depth	5	Left Front Tyre Depth	5
Right Rear Tyre Depth	5	Left Rear Tyre Depth	5

Cosmetic Damage

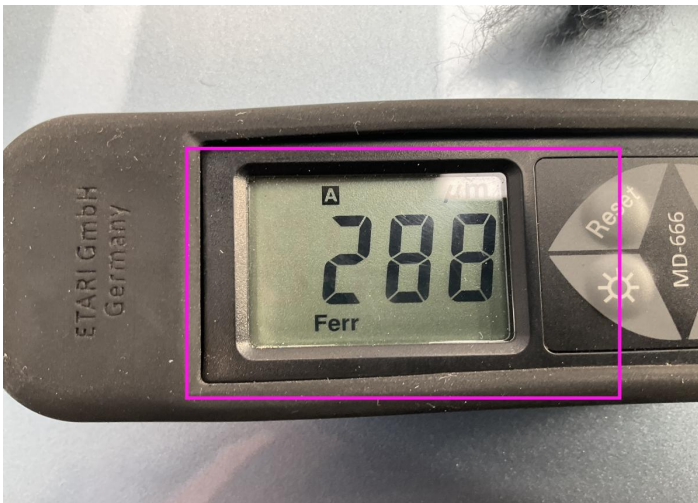
5 Schäden



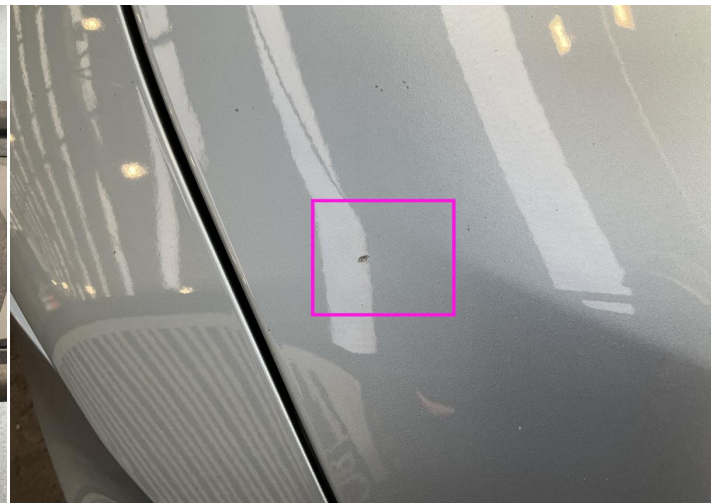
0 Schäden



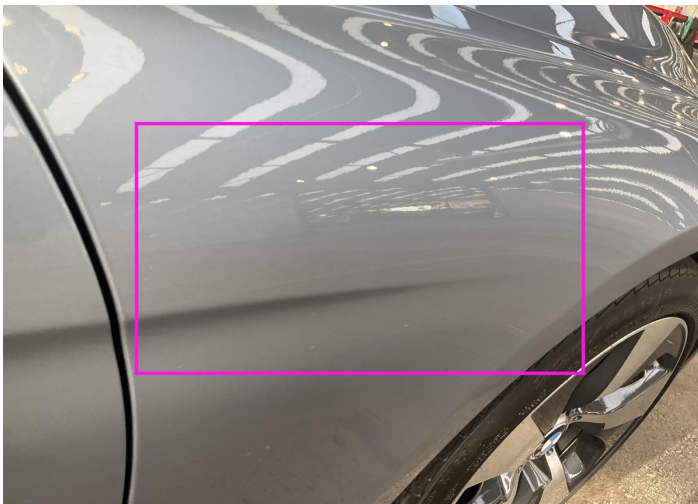
Component		Damage	Comments
1	Other	Paint / Poor Previous Repair	
2	Hood	Paint / Stone Chip	
3	Fender / Front Right	Paint / Scratch / Scuff	
4	Hood	Paint / Stone Chip	
5	Windshield / Front	Paint / Chipping	



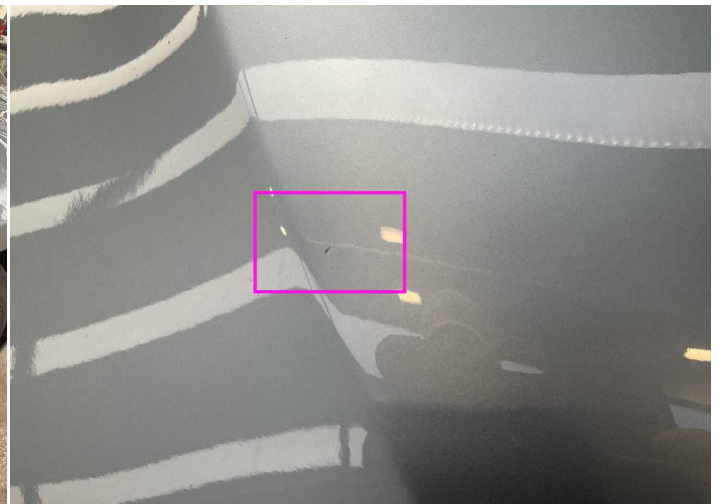
1.  
Paint / Poor Previous Repair -



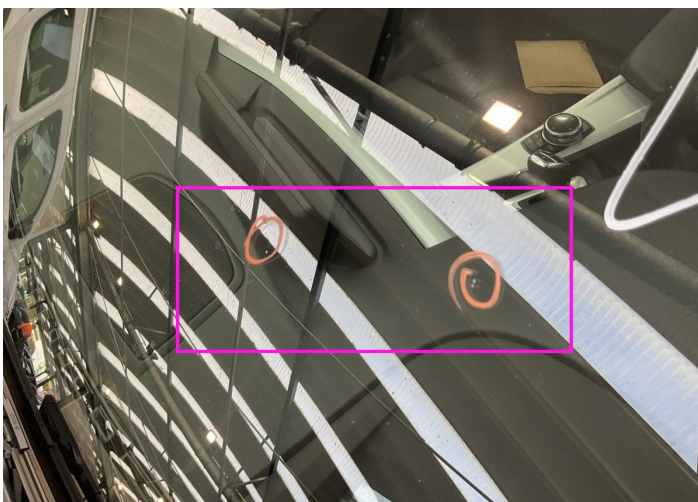
2. Hood  
Paint / Stone Chip -



3. Fender / Front Right  
Paint / Scratch / Scuff -



4. Hood  
Paint / Stone Chip -



5. Windshield / Front  
Paint / Chipping -

## Mechanical Condition

### Control Lights

Display Defect	✓	ABS Warning Light	✓
ESP Fault/Traction Control Malfunction Light	✓	Airbag Warning Light	✓
Oil Pressure Warning Light	✓	Brake Warning Light	✓
Power Steering Warning Light	✓	Alternator / Battery	✓
No Dashboard Lights	✓	Tire Pressure Monitoring System	✓

### Equipments Test

Main & Spare Keys Functioning	!	Electric Windows	✓
Navigation System	✓	Audio Equipment	✓
Parking Sensors / Cameras Functioning	✓	AC / Heating System	✓

### Engine

Engine Status / EML	✓	Engine Leak Visible	✓
Engine Starts	✓		

### Gearbox

Gear Box	✓
----------	---

### Levels

Brakes Fluid	NA	Coolant Fluid	✓
--------------	----	---------------	---

### Hybrid/EV

Hybrid System Fault	✓
---------------------	---



Test Drive Inspection

Steering Wheel			
Steering   Noise / Anomaly		✓	
Engine			
Engine Noise	✓	The Gears Scratch / Skip / Abnormal Operation	✓
Fume Quantity	✓	Power Loss	✓
Brake			
Brake System Anomaly		✓	
General			
Test Driven Status		✓	
✓ <i>No troubles detected, good condition or correct tests, according to vehicle age and mileage</i>			
! <i>Damages or malfunction detected that requires repairs by the buyer</i>			
NA <i>Not applicable</i>			
= <i>Not tested</i>			

Disclaimer

Please also note the "UserGuide condition report", which shows the scope of the vehicle description.

[User Guide](#)