



BMW 3er 335i xDrive Sport-Aut.

VIN NO WBA3B91070F899783
Registration Number 070F899783



MOT Date	Number of Owners	Number of Keys	Odometer Reading
2026-01-01	2	3	11310833 km
Last Service	Last Service Mileage	First Registration Date	Country First Registered
-	-	2015-01-30	Germany

Inspection Report Summary

Customer	BCA Online	Report Number	P20251010140229
Inspection Date / Place	2025-10-10 / BCA Neuss	Cosmetic Grade	3

Vehicle Summary

Vehicle Condition	Runner	VAT Type	Margin
Fuel Type	Petrol	Road Worthy	Yes
Colour	Brown	Engine Size (cc)	2979
Engine Size	3.0	No of Doors	4
Body Type	Sedan	Drive Train	All-Wheel-Drive permanent
Seat Colour		No of Seats	5
Seat Covering Name	Weiß	Seat Covering	Leather
Charging Cables		NEDC CO2 Rating (q/km)	178
Gearbox Type	Automatic		

Vehicle History & Documents

Service Book Available	Missing	Next Service Mileage	km
Previous Usage		Imported	No
Manufacturer Warrenty			







Equipment

USB Socket	Airbag Status	Anti-lock braking	Bluetooth telephone interface
Front fog lamps	Head up Display	Satellite navigation	Sunroof
Electrically adjustable seats	Leather steering wheel	Radio	Adaptivecruisecontrol
Alloys wheels	Auxiliary Socket	Cruise control	Front parking sensors
Remote central locking	Stability control	CD Player	Laneassist
LED Headlamps	Rear parking sensors		

Equipment Details

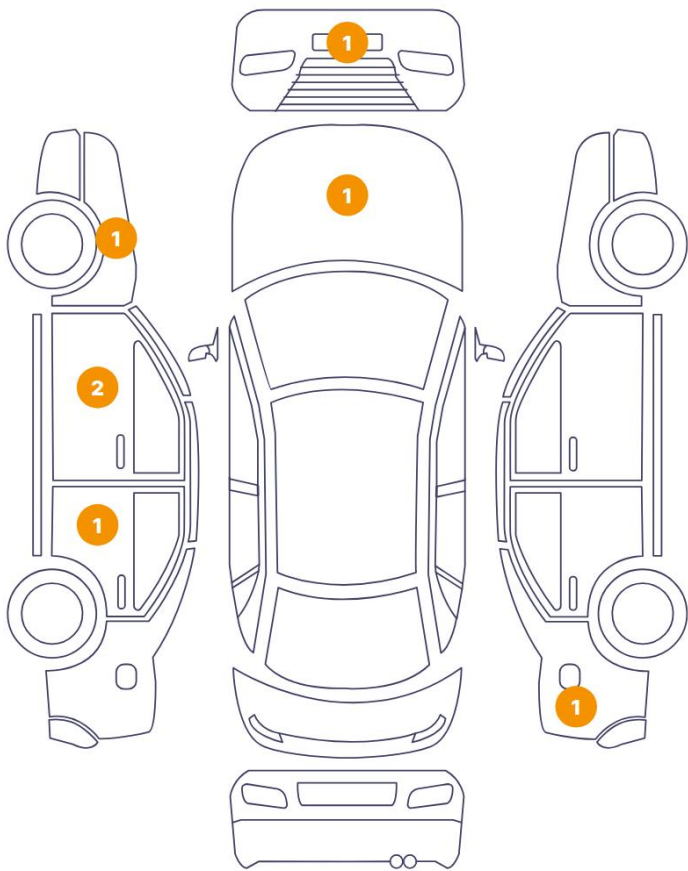
Air Conditioning	Dual Zone Climate Control	Alloy Wheel Size	18
Seat Heating	Front	Sunroof Type	Tilt/Slide Glass

Wheels & Tyres

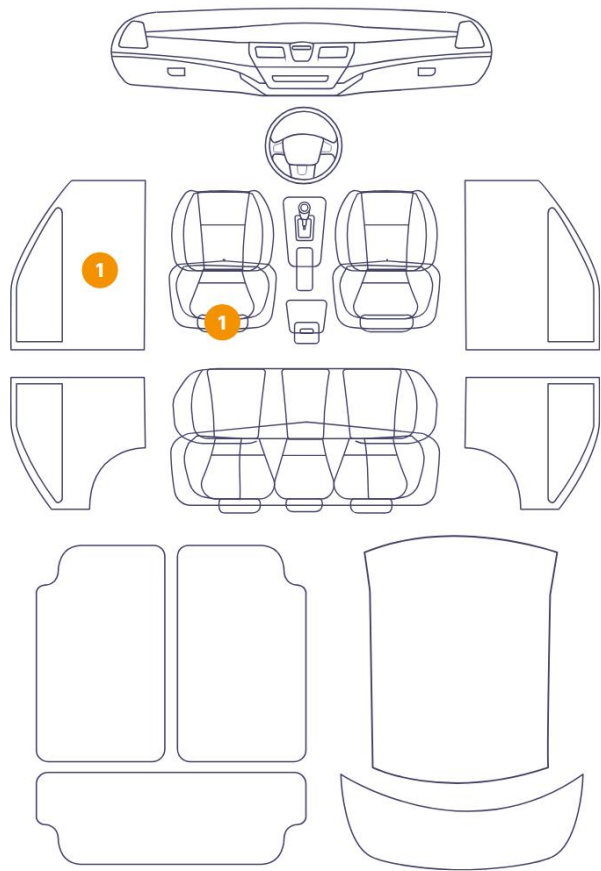
Right Rear Tyre Depth	5	Left Rear Tyre Depth	5
Right Front Tyre Depth	5	Left Front Tyre Depth	5

Cosmetic Damage

7 Schäden



2 Schäden



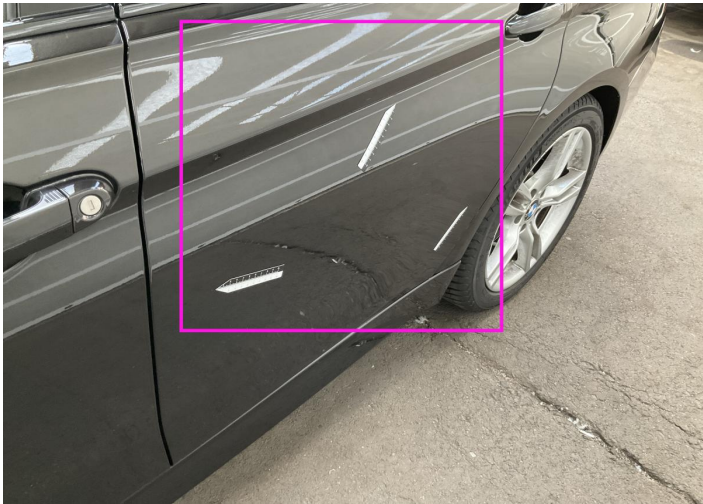
Component	Damage	Comments
1 Panel Filling / Front Left	Interior / Worn - out	
2 Side Panel / Back Right	Paint / Poor Previous Repair	
3 Door / Back Left	Paint / Scratch / Scuff	
4 Hood	Paint / Stone Chip	
5 Seat / Front Left	Interior / Worn - out	
6 Wing Expander / Front Left	Paint / Scratch / Scuff	
7 Bumper / Front	Paint / Scratch / Scuff	
8 Door / Front Left	Paint / Scratch / Scuff	
9 Door / Front Left	Paint / Scratch / Scuff	



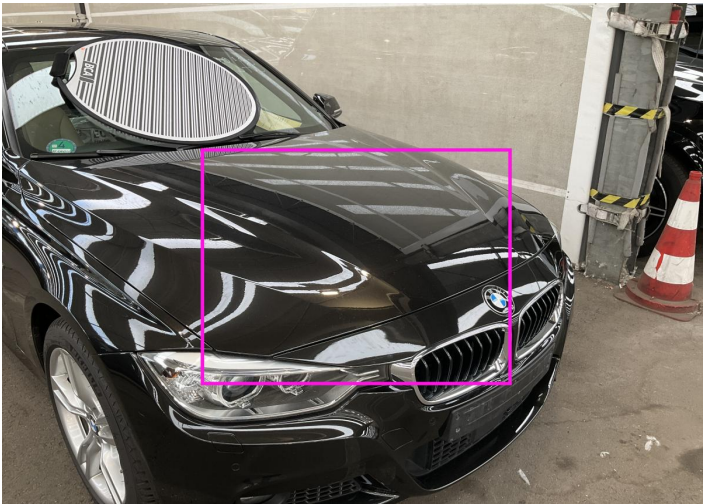
1. Panel Filling / Front Left
Interior / Worn - out -



2. Side Panel / Back Right
Paint / Poor Previous Repair -



3. Door / Back Left
Paint / Scratch / Scuff -



4. Hood
Paint / Stone Chip -



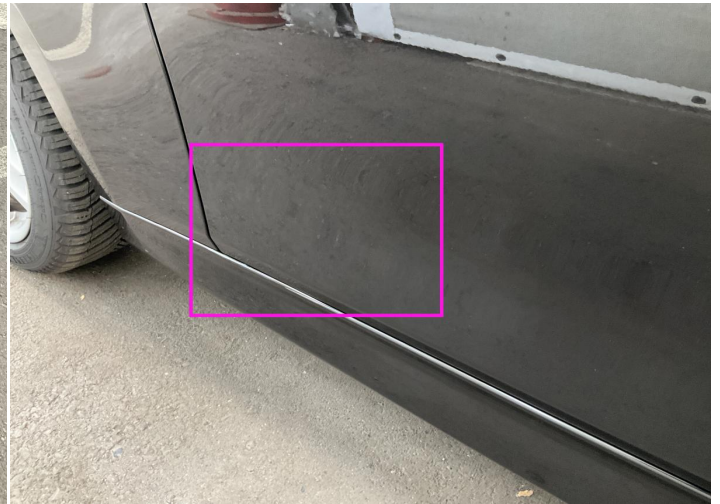
5. Seat / Front Left
Interior / Worn - out -



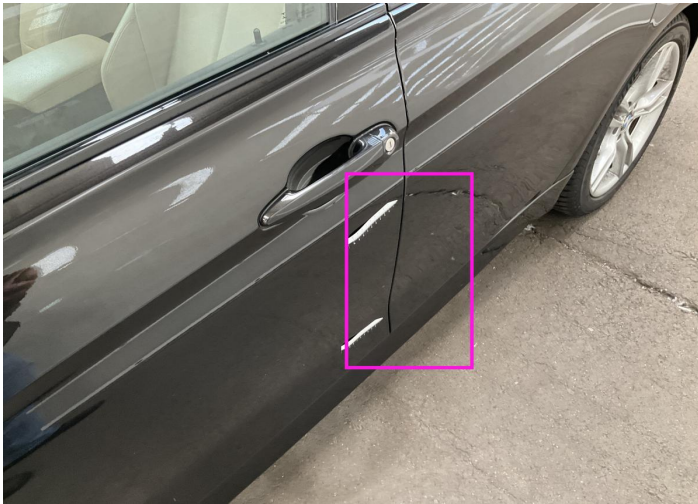
6. Wing Expander / Front Left
Paint / Scratch / Scuff -



7. Bumper / Front
Paint / Scratch / Scuff -



8. Door / Front Left
Paint / Scratch / Scuff -



9. Door / Front Left
Paint / Scratch / Scuff -

Mechanical Condition

Equipments Test

Central Locking	✓	Electric Windows	✓
Navigation System	✓	AC / Heating System	✓
Main & Spare Keys Functioning	✓	Parking Sensors / Cameras Functioning	✓
Other Equipments	✓		

Control Lights

ABS Warning Light	✓	ESP Fault/Traction Control Malfunction Light	✓
Airbag Warning Light	✓	Oil Pressure Warning Light	✓
Brake Warning Light	✓	Power Steering Warning Light	✓
Alternator / Battery	✓	All - wheel Drive	✓
No Dashboard Lights	✓	Display Defect	✓
Service Light	✓	Tire Pressure Monitoring System	✓

Engine

Engine Status / EML	✓	Engine Leak Visible	✓
Engine Starts	✓		

Gearbox

Gear Box	✓
----------	---

Levels

Brakes Fluid	✓	Coolant Fluid	✓
--------------	---	---------------	---

Test Drive Inspection

Steering Wheel

Steering | Noise / Anomaly

Engine

Engine Noise The Gears Scratch / Skip / Abnormal Operation

Fume Quantity Power Loss

Brake

Brake System Anomaly

General

Test Driven Status

- No troubles detected, good condition or correct tests, according to vehicle age and mileage
- Damages or malfunction detected that requires repairs by the buyer
- Not applicable
- Not tested

Disclaimer

Please also note the "UserGuide condition report", which shows the scope of the vehicle description. [User Guide](#)