



BMW 3er 320d Touring xDrive Aut.

VIN NO WBA31DZ010FN21971
Registration Number 010FN21971



MOT Date

2025-01-07

Last Service

2025-04-29

Number of Owners

1

Last Service Mileage

173937

Number of Keys

2

First Registration Date

2022-07-07

Odometer Reading

179512 km

Country First Registered

Germany

Inspection Report Summary

Customer	BCA Online	Report Number	P20250722071558
Inspection Date / Place	2025-07-22 / BCA Heidenheim	Cosmetic Grade	2

Vehicle Summary

Vehicle Condition	Runner	VAT Type	Qualifying
Fuel Type	Diesel	Road Worthy	Yes
Colour	Blue	Engine Size (cc)	1995
Engine Size	2.0	No of Doors	5
Body Type	Stationwagon / Estate	Drive Train	All-Wheel-Drive permanent
Seat Colour		No of Seats	5
Seat Covering Name		Seat Covering	Leather
Charging Cables		WLTP CO2 Emissions	
Gearbox Type	Automatic		

Vehicle History & Documents

Service Book Available	Present	Next Service Mileage	km
Previous Usage		Imported	No
Manufacturer Warranty			









Equipment

Tinted Glass	Airbag Status	Ambientlighting	Anti-lock braking
Bluetooth telephone interface	Diesel particulate filter	Digitaldashboard	Heated wing mirrors
Remote central locking	Roof rails	Split folding rear seats	Electrically adjustable seats
Electrictailgate	Leather steering wheel	Radio	Tow ball
Alloys wheels	AndroidAuto	AppleCarPlay	Cruise control
Digital Radio	Front parking sensors	Remote adjusting wing mirrors	Reversing Camera
Satellite navigation	Stability control	Electrically folding wing mirrors	Keyless Entry
LED Headlamps	Rear parking sensors		

Equipment Details

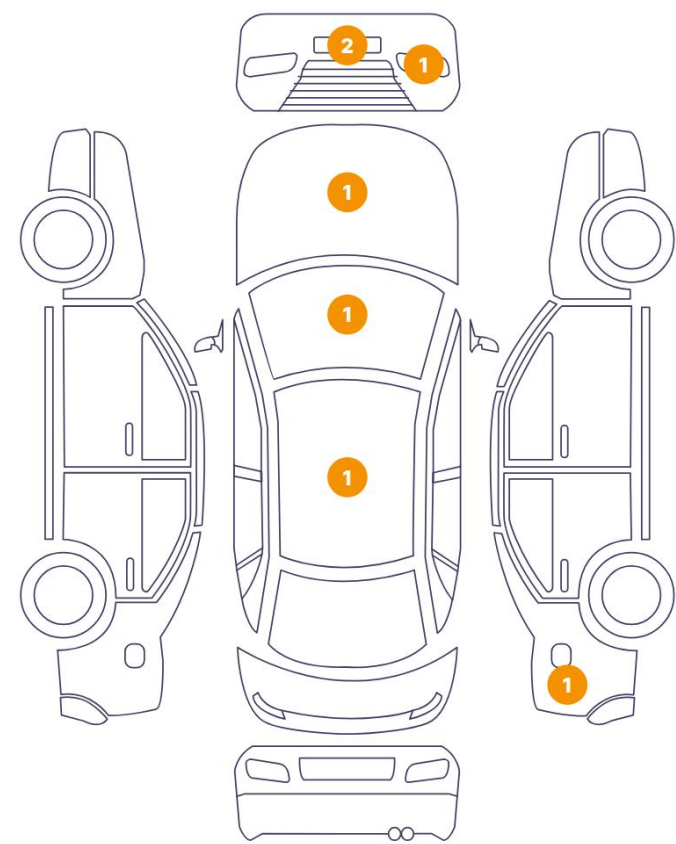
Tow Ball Type	Electronic	Air Conditioning	Three Zone Climate Control
Alloy Wheel Size	18	Seat Heating	Front

Wheels & Tyres

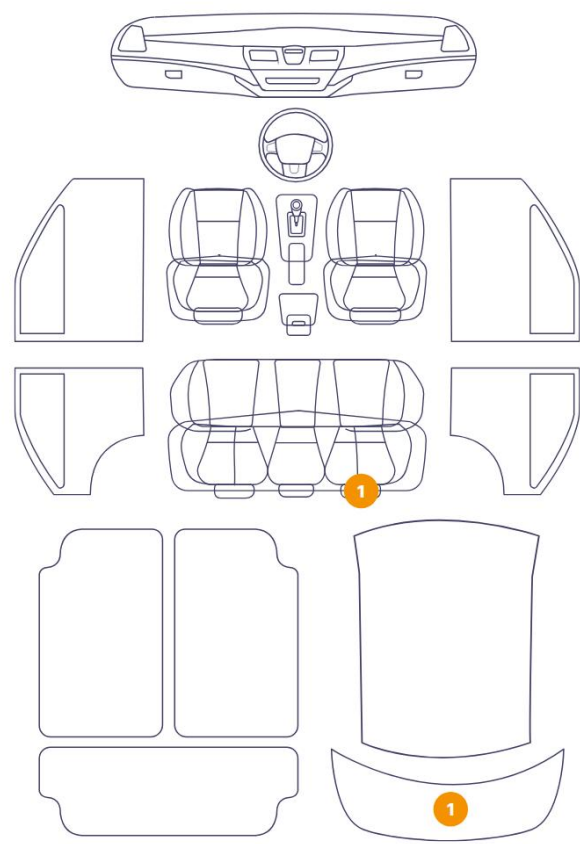
Right Front Tyre Depth	4	Left Front Tyre Depth	5
Right Rear Tyre Depth	3	Left Rear Tyre Depth	4

Cosmetic Damage

7 Schäden



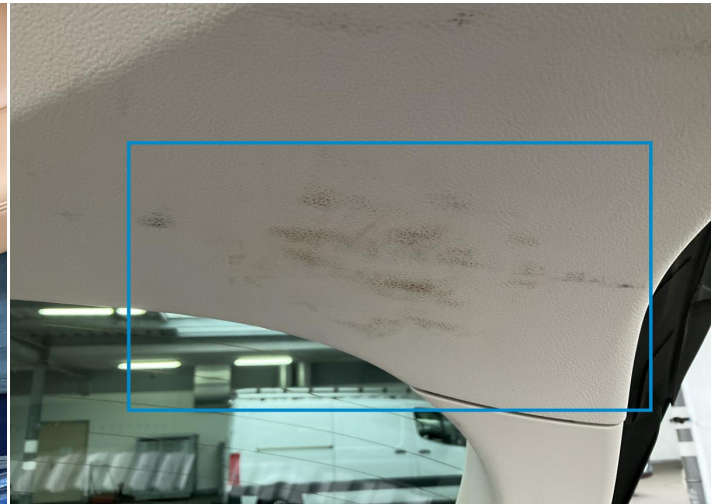
2 Schäden



Component	Damage	Comments
1 Seat / Back Right	Interior / Not Working	
2 Trunk Upholstery / Back	Interior / Dirty	
3 Hood	Paint / Stone Chip	
4 LED - Xenon Headlight / Front - Right	Paint / Stone Chip	
5 Bumper / Front	Paint / Stone Chip	
6 Windshield / Front	Glass Break / Impact	
7 Side Panel / Back Right	Bodywork / Dent / Dent	
8 Roof	Bodywork / Dent / Dent	
9 Bumper / Front	Paint / Scratch / Scuff	



1. Seat / Back Right
Interior / Not Working -



2. Trunk Upholstery / Back
Interior / Dirty -



3. Hood
Paint / Stone Chip -



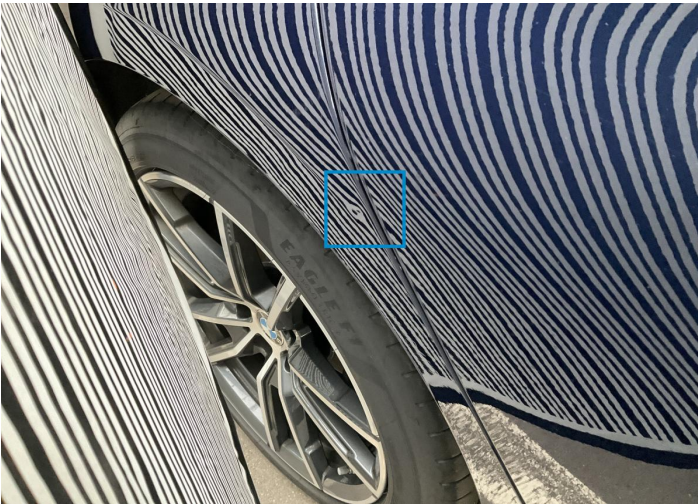
4. LED - Xenon Headlight / Front - Right
Paint / Stone Chip -



5. Bumper / Front
Paint / Stone Chip -



6. Windshield / Front
Glass Break / Impact -



7. Side Panel / Back Right
Bodywork / Dent / Dent -



8. Roof
Bodywork / Dent / Dent -



9. Bumper / Front
Paint / Scratch / Scuff -

Mechanical Condition

Control Lights

Display Defect	✓	Service Light	!
ABS Warning Light	✓	ESP Fault/Traction Control Malfunction Light	✓
Diesel Particulate Filter Light	✓	Airbag Warning Light	✓
Oil Pressure Warning Light	✓	Brake Warning Light	✓
Power Steering Warning Light	✓	Alternator / Battery	✓
No Dashboard Lights	✓		

Equipments Test

Central Locking	✓	Electric Windows	✓
Navigation System	✓	Audio Equipment	✓
Parking Sensors / Cameras Functioning	✓	AC / Heating System	✓

Engine

Engine Status / EML	✓	Engine Leak Visible	NA
Engine Starts	✓		

Gearbox

Gear Box	✓
----------	---

Test Drive Inspection

Steering Wheel

Steering Noise / Anomaly	✓
----------------------------	---

Engine


Engine Noise	✓	The Gears Scratch / Skip / Abnormal Operation	✓
Fume Quantity	✓	Power Loss	✓

General

Test Driven Status	✓
--------------------	---

✓ No troubles detected, good condition or correct tests, according to vehicle age and mileage

! Damages or malfunction detected that requires repairs by the buyer

 *Not applicable*

 *Not tested*

Disclaimer

Please also note the "UserGuide condition report", which shows the scope of the vehicle description.

[User Guide](#)