



BMW 3er 320d Touring xDrive Aut.

VIN NO WBA31DZ000FN21458

Registration Number 000FN21458



MOT Date

2025-07-01

Last Service

2025-06-27

Number of Owners

1

Last Service Mileage

196186

Number of Keys

2

First Registration Date

2022-07-20

Odometer Reading

200035 km

Country First Registered

-

Inspection Report Summary

Customer	BCA Online	Report Number	P20250813134251
Inspection Date / Place	2025-08-13 / BCA Oberndorf	Cosmetic Grade	2

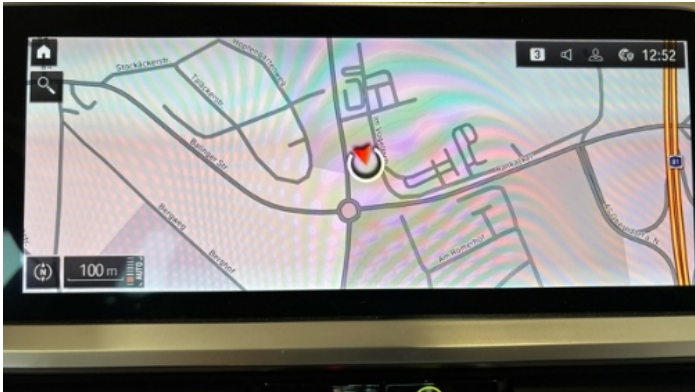
Vehicle Summary

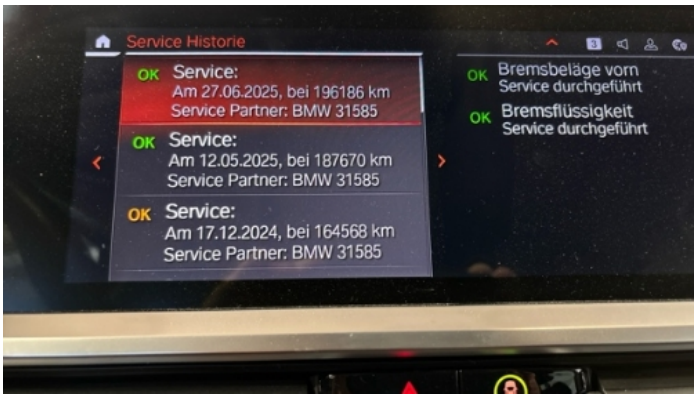
Vehicle Condition	Runner	VAT Type	Qualifying
Fuel Type	Diesel	Road Worthy	Yes
Colour	White	Engine Size (cc)	1995
Engine Size	2.0	No of Doors	5
Body Type	Stationwagon / Estate	Drive Train	All-Wheel-Drive permanent
Seat Colour		No of Seats	5
Seat Covering Name	Schwarz	Seat Covering	Cloth/Leather
Charging Cables		WLTP CO2 Emissions	
Gearbox Type	Automatic		

Vehicle History & Documents

Service Book Available	Present	Next Service Mileage	km
Previous Usage		Imported	No
Manufacturer Warrenty			







Equipment

Tinted Glass	Traffic sign recognition	Airbag Status	Ambient lighting
Anti-lock braking	Blind spot assist	Cruise control	Digital Radio
Front parking sensors	Remote adjusting wing mirrors	Roof rails	Split folding rear seats
Central locking	Electric tailgate	Keyless Entry	Leather steering wheel
Rear parking sensors	Tow ball	USB Socket	Alloys wheels
Android Auto	Apple CarPlay	Bluetooth telephone interface	Diesel particulate filter
Digital dashboard	Parking Assistance	Remote central locking	Satellite navigation
Stability control	Electrically folding wing mirrors	Emergency brake assist	Lane assist
Radio			

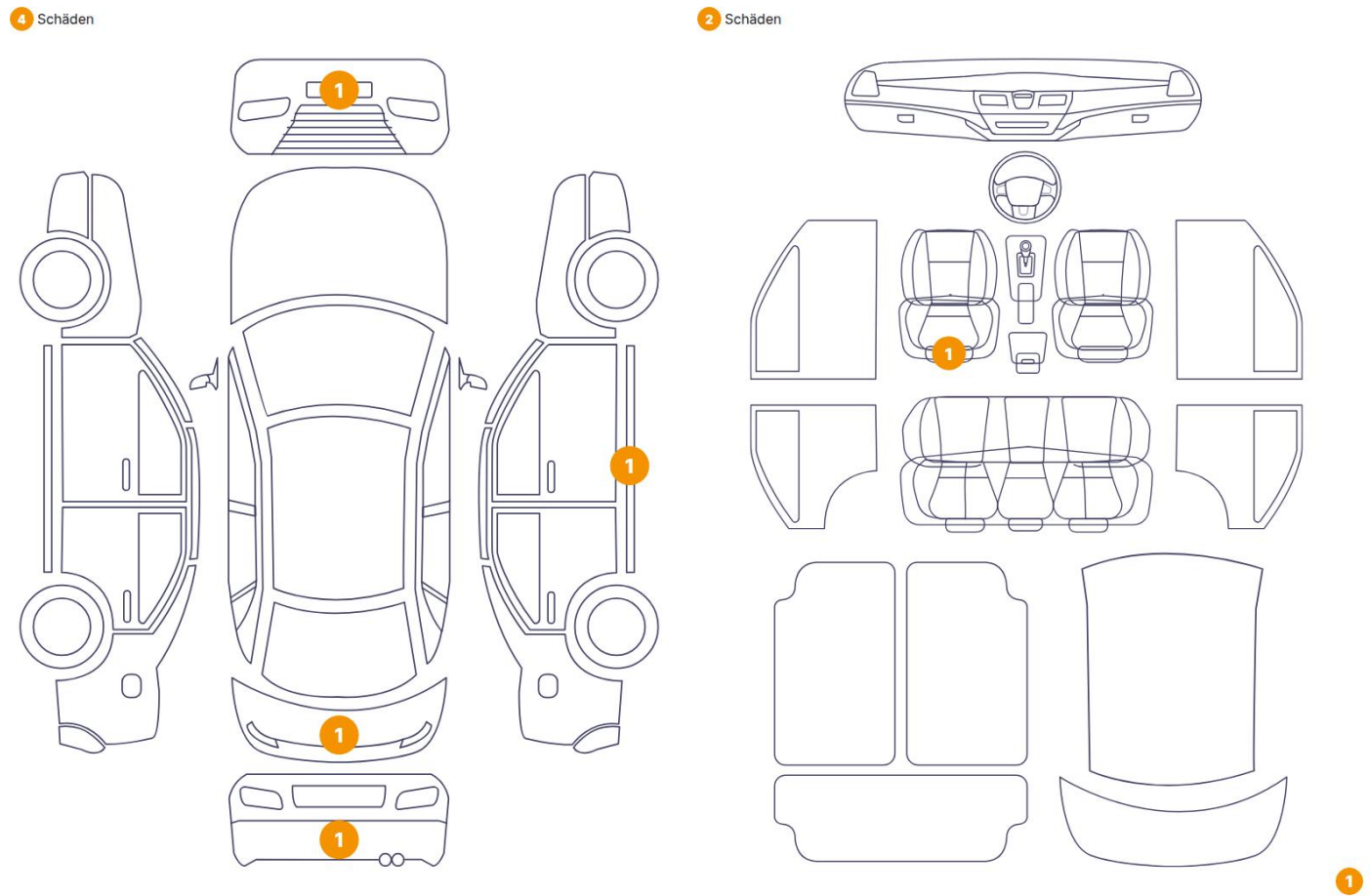
Equipment Details

Tow Ball Type	Electronic	Air Conditioning	Three Zone Climate Control
Alloy Wheel Size	17	Seat Heating	Front

Wheels & Tyres

Right Front Tyre Depth	7	Left Front Tyre Depth	7
Right Rear Tyre Depth	7	Left Rear Tyre Depth	7

Cosmetic Damage



Component		Damage	Comments
1	Bumper / Front	Paint / Scratch / Scuff	
2	Backrest Cover / Front Left	Interior / Scraped	
3	Bumper / Back	Paint / Scratch / Scuff	
4	Other	Interior / Scraped	
5	Tailgate	Paint / Scratch / Scuff	
6	Rocker Panel / Center Right	Paint / Scratch / Scuff	



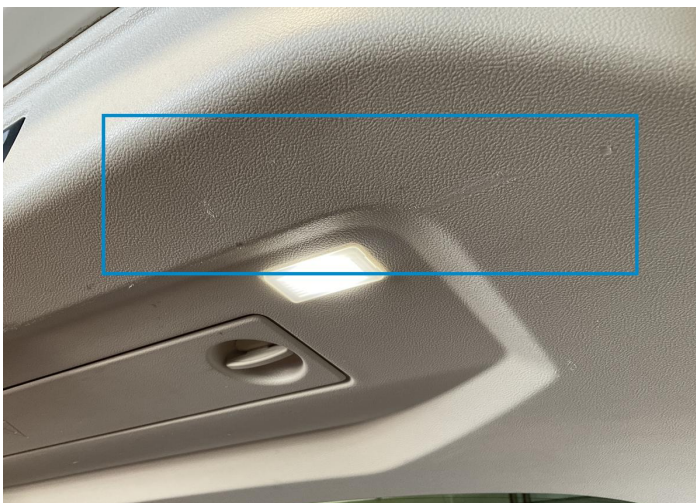
1. Bumper / Front
Paint / Scratch / Scuff -



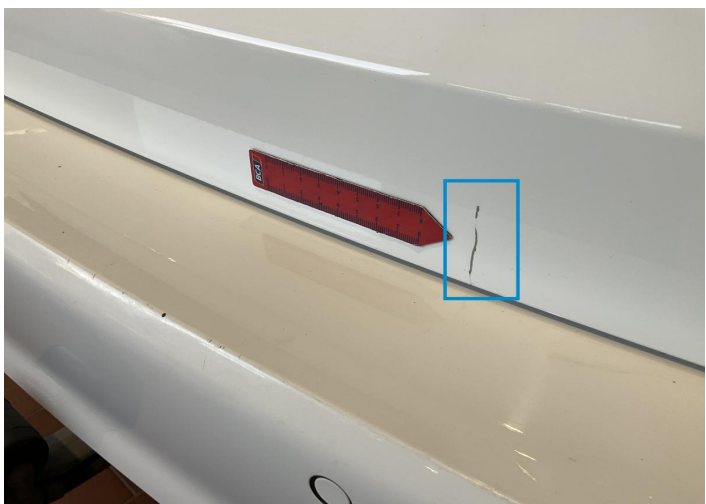
2. Backrest Cover / Front Left
Interior / Scraped -



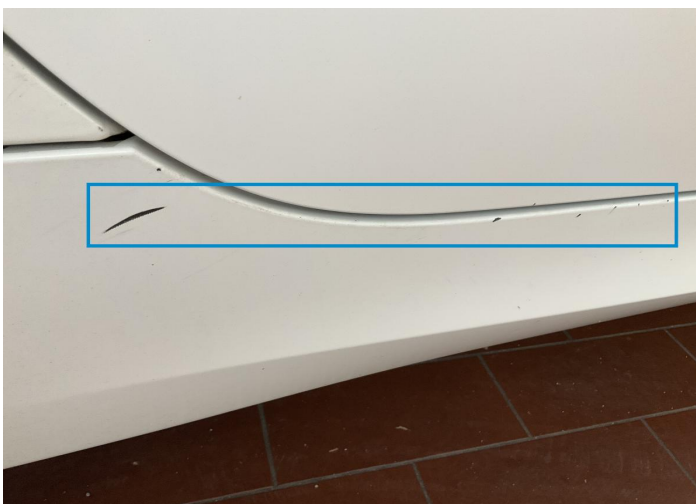
3. Bumper / Back
Paint / Scratch / Scuff -



4.
Interior / Scraped -



5. Tailgate
Paint / Scratch / Scuff -



6. Rocker Panel / Center Right
Paint / Scratch / Scuff -

Mechanical Condition

Control Lights

Display Defect	✓	Service Light	✓
ABS Warning Light	✓	ESP Fault/Traction Control Malfunction Light	✓
Diesel Particulate Filter Light	✓	Airbag Warning Light	✓
Oil Pressure Warning Light	✓	Brake Warning Light	✓
Power Steering Warning Light	✓	Alternator / Battery	✓
All - wheel Drive	✓	No Dashboard Lights	✓
Tire Pressure Monitoring System	✓		

Equipments Test

Central Locking	✓	Main & Spare Keys Functioning	✓
Electric Windows	✓	Audio Equipment	✓
Parking Sensors / Cameras Functioning	✓	AC / Heating System	✓
Other Equipments	✓		

Engine

Engine Status / EML	✓	Engine Leak Visible	✓
Engine Starts	✓		

Gearbox

Gear Box	✓
----------	---

Levels

Brakes Fluid	✓	Coolant Fluid	✓
--------------	---	---------------	---

Test Drive Inspection

Steering Wheel

Steering | Noise / Anomaly

Engine

Engine Noise The Gears Scratch / Skip / Abnormal Operation

Fume Quantity Power Loss

Brake

Brake System Anomaly

General

Test Driven Status Not Performed

- No troubles detected, good condition or correct tests, according to vehicle age and mileage
- Damages or malfunction detected that requires repairs by the buyer
- Not applicable
- Not tested

Disclaimer

Please also note the "UserGuide condition report", which shows the scope of the vehicle description. [User Guide](#)