



BMW 5er 520d Touring Aut.

VIN NO WBA31BN050CJ75998
Registration Number 050CJ75998



MOT Date

2025-04-01

Last Service

2025-01-14

Number of Owners

1

Last Service Mileage

191532

Number of Keys

1

First Registration Date

2022-04-05

Odometer Reading

202117 km

Country First Registered

Germany

Inspection Report Summary

Customer	BCA Online	Report Number	P20250926103244
Inspection Date / Place	2025-09-26 / BCA Oberndorf	Cosmetic Grade	3

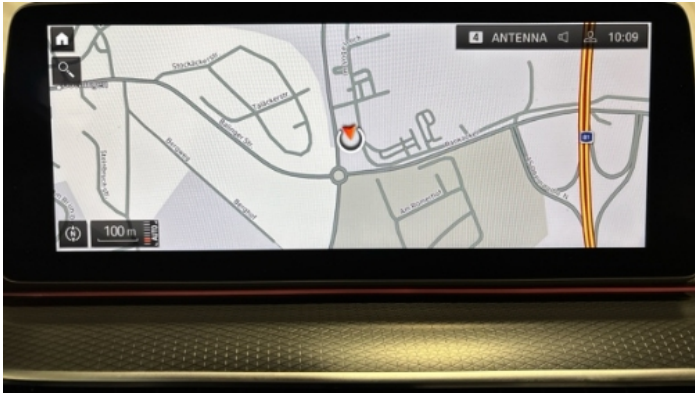
Vehicle Summary

Vehicle Condition	Runner	VAT Type	Qualifying
Fuel Type	Diesel	Road Worthy	Yes
Colour	Grey	Engine Size (cc)	1995
Engine Size	2.0	No of Doors	5
Body Type	Stationwagon / Estate	Drive Train	Rear
Seat Colour		No of Seats	5
Seat Covering Name	Schwarz	Seat Covering	Leather
Charging Cables		WLTP CO2 Emissions	
Gearbox Type	Automatic		

Vehicle History & Documents

Service Book Available	Present	Next Service Mileage	km
Previous Usage		Imported	No
Manufacturer Warrenty			







Equipment

Traffic sign recognition	USB Socket	Alloys wheels	Android Auto
Apple CarPlay	Bluetooth telephone interface	Diesel particulate filter	Digital dashboard
Remote adjusting wing mirrors	Reversing Camera	Satellite navigation	Stability control
Electrically folding wing mirrors	Emergency brake assist	Lane assist	LED Headlamps
Rear parking sensors	Trip Computer	Airbag Status	Ambient lighting
Anti-lock braking	Blind spot assist	Cruise control	Digital Radio
Front parking sensors	Remote central locking	Roof rails	Split folding rear seats
Central locking	Electric tailgate	Keyless Entry	Leather steering wheel
Radio			

Equipment Details

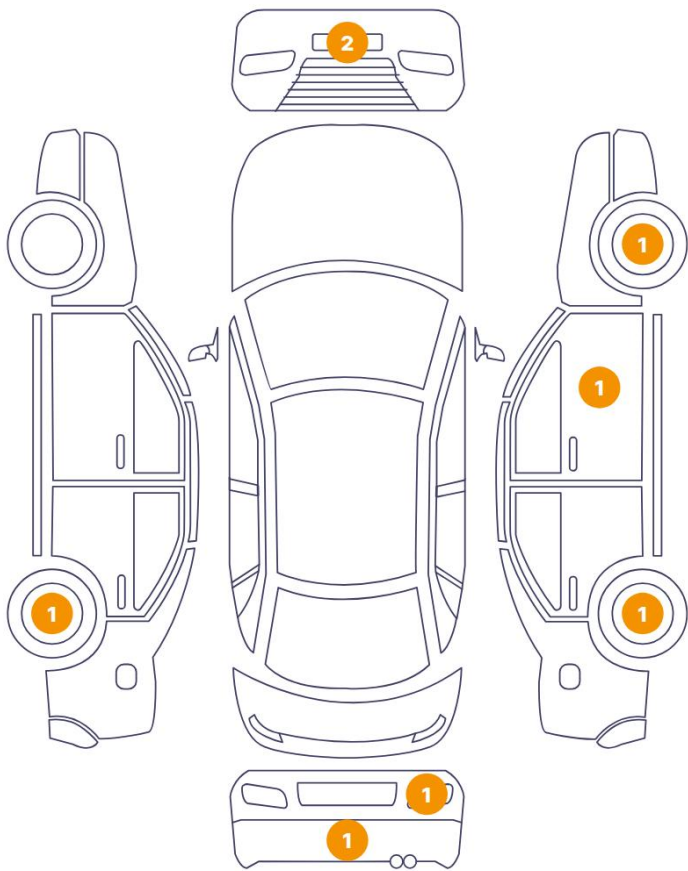
Air Conditioning	Four Zone Climate Control	Alloy Wheel Size	18
Seat Heating	Front		

Wheels & Tyres

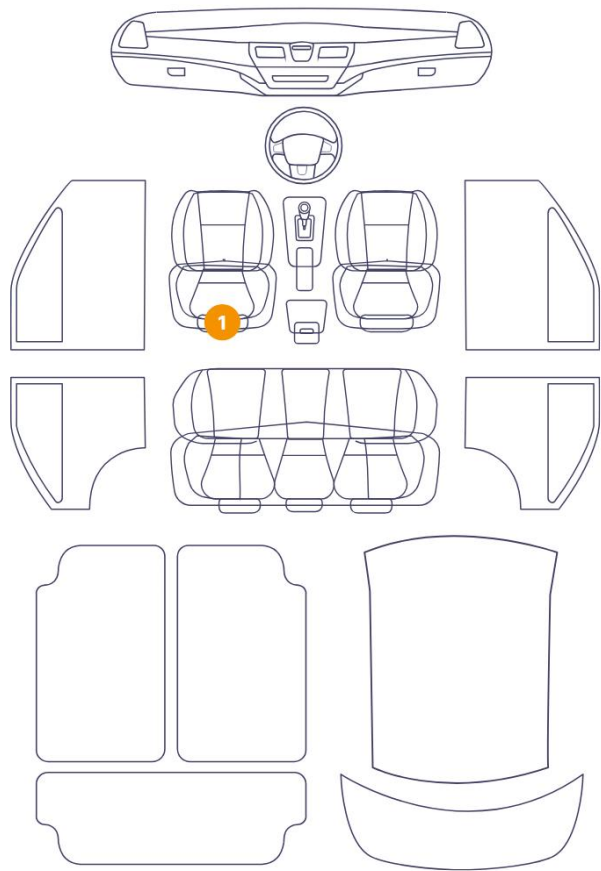
Left Rear Tyre Depth	5	Right Front Tyre Depth	5
Left Front Tyre Depth	5	Right Rear Tyre Depth	5

Cosmetic Damage

8 Schäden



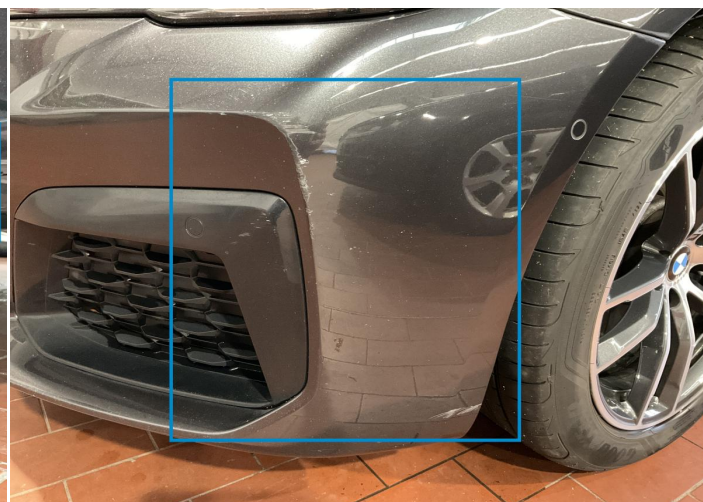
1 Schäden



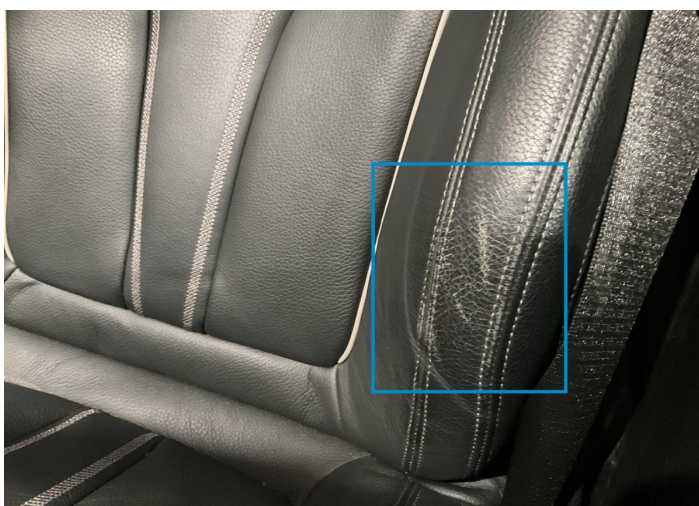
Component		Damage	Comments
1	Bumper / Front	Paint / Scratch / Scuff	
2	Bumper / Front	Paint / Scratch / Scuff	
3	Seat / Front Left	Interior / Scratched	
4	Rim / Back Left	Out of Bodywork / Scratch	
5	Bumper / Back	Bodywork / Dent / Dent	
6	Back Light / Right	Glass Break	
7	Rim / Back Right	Paint / Stone Chip	
8	Mirror / Front Right	Paint / Scratch / Line	
9	Rim / Front Right	Paint / Stone Chip	



1. Bumper / Front
Paint / Scratch / Scuff -



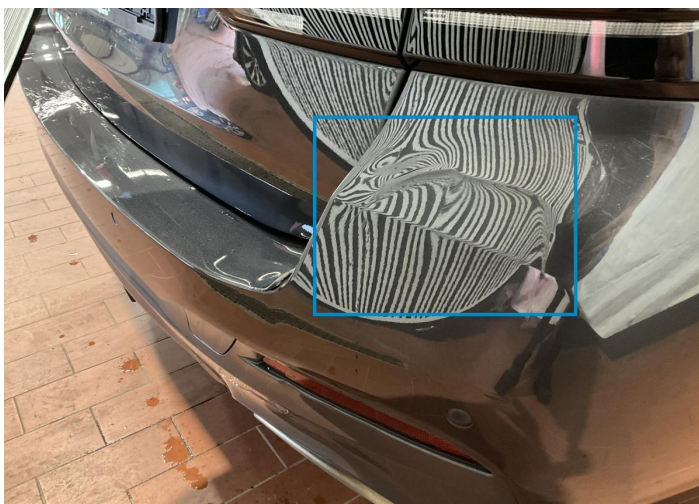
2. Bumper / Front
Paint / Scratch / Scuff -



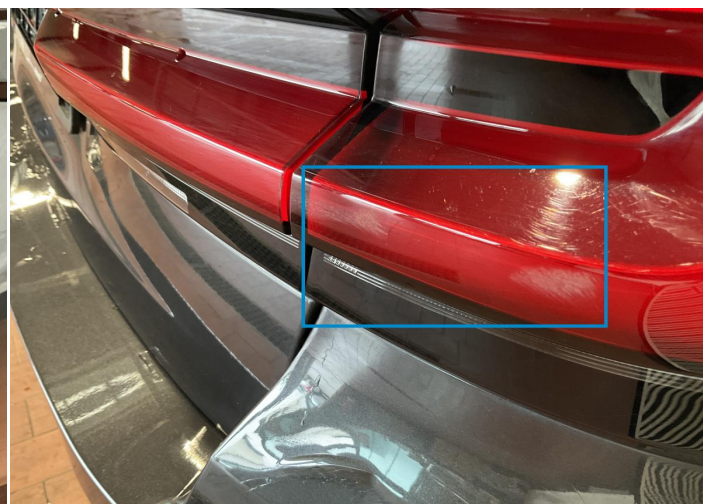
3. Seat / Front Left
Interior / Scratched -



4. Rim / Back Left
Out of Bodywork / Scratch -



5. Bumper / Back
Bodywork / Dent / Dent -



6. Back Light / Right
Glass Break -



7. Rim / Back Right
Paint / Stone Chip -



8. Mirror / Front Right
Paint / Scratch / Line -



9. Rim / Front Right
Paint / Stone Chip -

Mechanical Condition

Equipments Test

Central Locking	✓	Electric Windows	✓
Navigation System	✓	Audio Equipment	✓
AC / Heating System	✓	Main & Spare Keys Functioning	✓
Parking Sensors / Cameras Functioning	✓	Other Equipments	✓

Control Lights

ABS Warning Light	✓	ESP Fault/Traction Control Malfunction Light	✓
Diesel Particulate Filter Light	✓	Airbag Warning Light	✓
Oil Pressure Warning Light	✓	Brake Warning Light	✓
Power Steering Warning Light	✓	Alternator / Battery	✓
No Dashboard Lights	✓	Display Defect	✓
Service Light	✓	Tire Pressure Monitoring System	✓

Engine

Engine Status / EML	✓	Engine Leak Visible	✓
Engine Starts	✓		

Gearbox

Gear Box	✓
----------	---

Levels

Brakes Fluid	✓	Coolant Fluid	✓
--------------	---	---------------	---

Test Drive Inspection

Steering Wheel			
Steering Noise / Anomaly		✓	
Engine			
Engine Noise	✓	The Gears Scratch / Skip / Abnormal Operation	✓
Fume Quantity	✓	Power Loss	✓
Brake			
Brake System Anomaly		✓	
General			
Test Driven Status		Not Performed	
✓ No troubles detected, good condition or correct tests, according to vehicle age and mileage			
! Damages or malfunction detected that requires repairs by the buyer			
NA Not applicable			
= Not tested			

Disclaimer

Please also note the "UserGuide condition report", which shows the scope of the vehicle description.

[User Guide](#)