



BMW 1er

116i

VIN NO WBA2P710X05D39427

Registration Number 0X05D39427



MOT Date



Last Service

2018-05-02

Number of Owners



Last Service Mileage

22258

Number of Keys



First Registration Date

2016-03-16

Odometer Reading



Country First Registered



132746 km

Inspection Report Summary

Customer

BCA Online

Report Number

P20251007140905

Inspection Date / Place

2025-10-07 / ARS Altmann
AG Riedstadt

Cosmetic Grade

4

Vehicle Summary

Vehicle Condition

Runner

VAT Type

Margin

Fuel Type

Petrol

Road Worthy

Yes

Colour

White

Engine Size (cc)

1499

Engine Size

1.5

No of Doors

3

Body Type

Sedan

Drive Train

Rear

Seat Colour

No of Seats

4

Seat Covering Name

Seat Covering

Cloth

Charging Cables

NEDC CO2 Rating (q/km)

123

Gearbox Type

Manual

Vehicle History & Documents

Service Book Available

Present

Next Service Mileage

km

Previous Usage

Imported

No

Manufacturer Warranty





Equipment

Trip Computer	Airbag Status	Anti-lock braking	Bluetooth telephone interface
Remote adjusting wing mirrors	Stability control	Leather steering wheel	Rear parking sensors
USB Socket	Alloys wheels	Auxiliary Socket	Cruise control
Remote central locking	CD Player	Radio	

Equipment Details

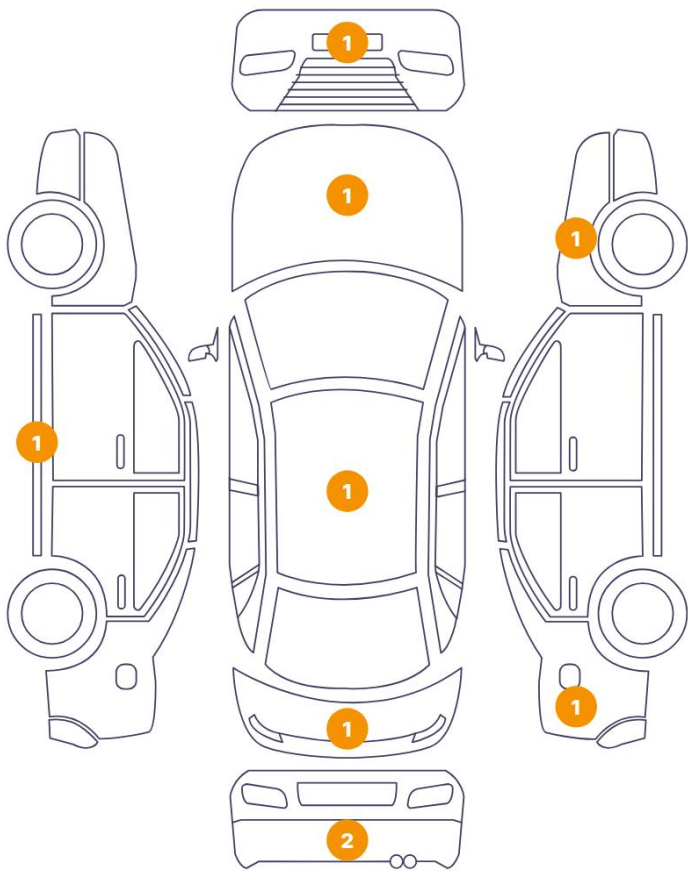
Air Conditioning	Climate Control	Alloy Wheel Size	16
Extra Wheel / Tyre Set	Winter Tyres - Alloy	Seat Heating	Front

Wheels & Tyres

Extra Wheel - 1 Tyre Depth	4	Extra Wheel - 2 Tyre Depth	3
Extra Wheel - 3 Tyre Depth	4	Extra Wheel - 4 Tyre Depth	3
Right Front Tyre Depth	5	Left Front Tyre Depth	5
Right Rear Tyre Depth	4	Left Rear Tyre Depth	4

Cosmetic Damage

9 Schäden



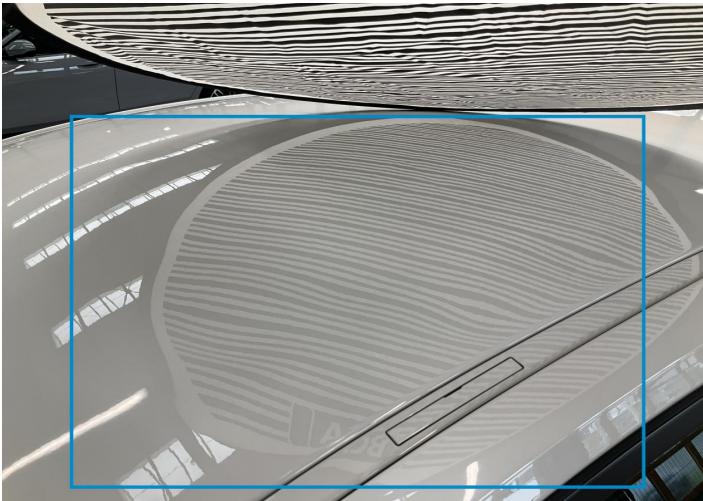
0 Schäden



Component	Damage	Comments
1 Hood	Bodywork / Dent / Hail Area	
2 Roof	Bodywork / Dent / Hail Area	
3 Bumper / Front	Paint / Scratch / Scuff	
4 Rocker Panel / Center Left	Paint / Scratch / Scuff	
5 Bumper / Back	Bodywork / Dent / Dent	
6 Fender / Back Right	Paint / Poor Previous Repair	
7 Bumper / Back	Paint / Scratch / Scuff	
8 Tailgate	Bodywork / Dent / Dent	
9 Fender / Front Right	Paint / Poor Previous Repair	



1. Hood
Bodywork / Dent / Hail Area -



2. Roof
Bodywork / Dent / Hail Area -



3. Bumper / Front
Paint / Scratch / Scuff -



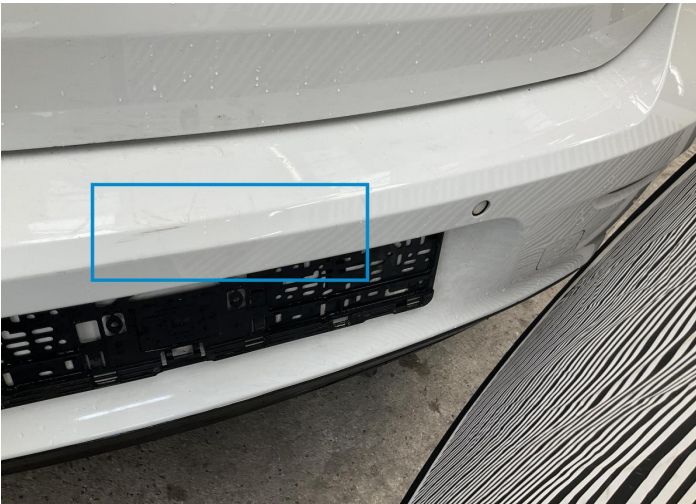
4. Rocker Panel / Center Left
Paint / Scratch / Scuff -



5. Bumper / Back
Bodywork / Dent / Dent -



6. Fender / Back Right
Paint / Poor Previous Repair -



7. Bumper / Back
Paint / Scratch / Scuff -



8. Tailgate
Bodywork / Dent / Dent -



9. Fender / Front Right
Paint / Poor Previous Repair -

Mechanical Condition

Engine

Engine Starts	✓	Engine Status / EML	✓
Engine Leak Visible	✓		

Control Lights

ABS Warning Light	✓	ESP Fault/Traction Control Malfunction Light	✓
Airbag Warning Light	✓	Oil Pressure Warning Light	✓
Brake Warning Light	✓	Power Steering Warning Light	✓
Alternator / Battery	✓	No Dashboard Lights	✓
Display Defect	✓	Service Light	!
Tire Pressure Monitoring System	✓		

Gearbox

Gear Box	✓
----------	---

Equipments Test

AC / Heating System	✓	Other Equipments	✓
Central Locking	✓	Main & Spare Keys Functioning	✓
Electric Windows	✓	Audio Equipment	✓
Parking Sensors / Cameras Functioning	✓		

Levels

Brakes Fluid	✓	Coolant Fluid	✓
--------------	---	---------------	---

Test Drive Inspection

Steering Wheel			
Steering Noise / Anomaly		✓	
Engine			
Engine Noise	✓	Fume Quantity	✓
Power Loss	✓		
Brake			
Brake System Anomaly	✓		
Clutch			
Clutch Functioning	✓		
General			
Test Driven Status	✓		

- ✓ No troubles detected, good condition or correct tests, according to vehicle age and mileage
- ! Damages or malfunction detected that requires repairs by the buyer
- NA Not applicable
- ☐ Not tested

Disclaimer

Please also note the "UserGuide condition report", which shows the scope of the vehicle description.

[User Guide](#)