



BMW 2er Active Tourer 220d Active Tourer xDrive Sport-Aut.

VIN NO WBA2C51030V670430
Registration Number 030V670430



MOT Date

2027-06-01

Last Service

2025-07-09

Number of Owners

2

Last Service Mileage

171281

Number of Keys

2

First Registration Date

2016-03-04

Odometer Reading

171890 km

Country First Registered

Germany

Inspection Report Summary

Customer	BCA Online	Report Number	P20250903084022
Inspection Date / Place	2025-09-03 / BCA Oberndorf	Cosmetic Grade	2

Vehicle Summary

Vehicle Condition	Runner	VAT Type	Margin
Fuel Type	Diesel	Road Worthy	Yes
Colour	Blue	Engine Size (cc)	1995
Engine Size	2.0	No of Doors	5
Body Type	Stationwagon / Estate	Drive Train	All-Wheel-Drive switchable
Seat Colour		No of Seats	5
Seat Covering Name	Schwarz/blau	Seat Covering	Cloth
Charging Cables		NEDC CO2 Rating (q/km)	122
Gearbox Type	Automatic		

Vehicle History & Documents

Service Book Available	Present	Next Service Mileage	km
Previous Usage		Imported	No
Manufacturer Warrenty			







Equipment

Tow ball	Airbag Status	Ambientlighting	Auxiliary Socket
Cruise control	Digital Radio	Front fog lamps	Head up Display
Remote central locking	Satellite navigation	Stability control	Electrically folding wing mirrors
Keyless Entry	LED Headlamps	Rear parking sensors	USB Socket
Alloys wheels	Anti-lock braking	Bluetooth telephone interface	Diesel particulate filter
Enhanced speaker system	Front parking sensors	Remote adjusting wing mirrors	Roof rails
Split folding rear seats	Central locking	Electrictailgate	Leather steering wheel

Radio

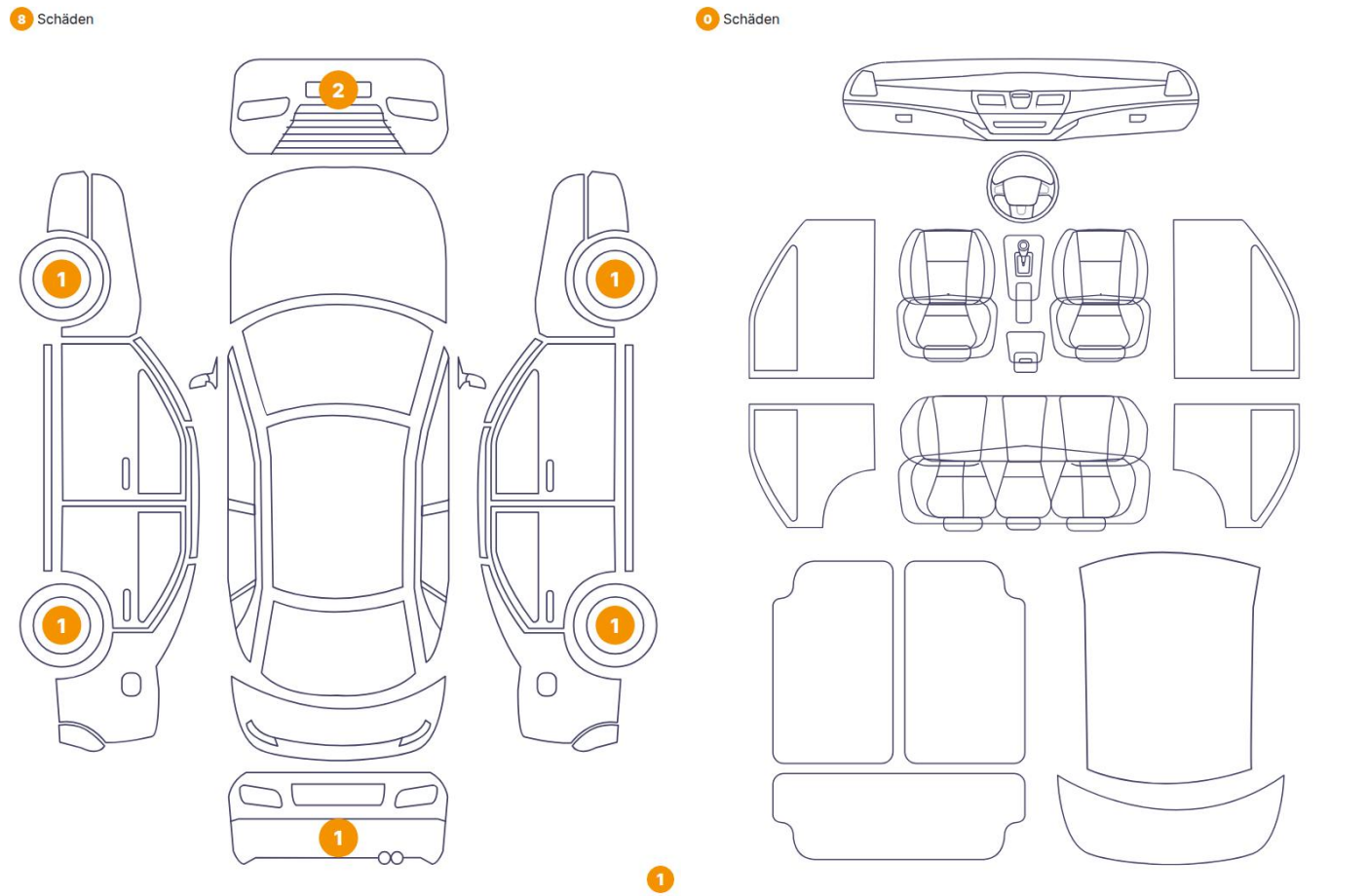
Equipment Details

Tow Ball Type	Detachable	Air Conditioning	Dual Zone Climate Control
Alloy Wheel Size	18	Enhanced Speaker System	Harman/kardon
Seat Heating	Front		

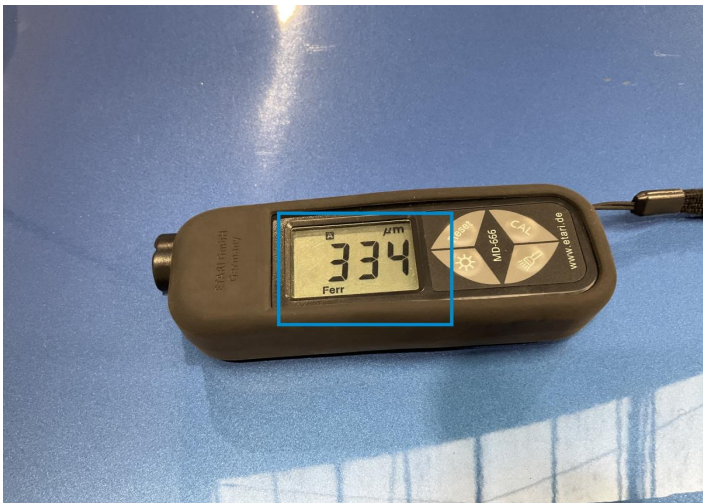
Wheels & Tyres

Right Front Tyre Depth	6	Left Front Tyre Depth	6
Right Rear Tyre Depth	6	Left Rear Tyre Depth	6

Cosmetic Damage



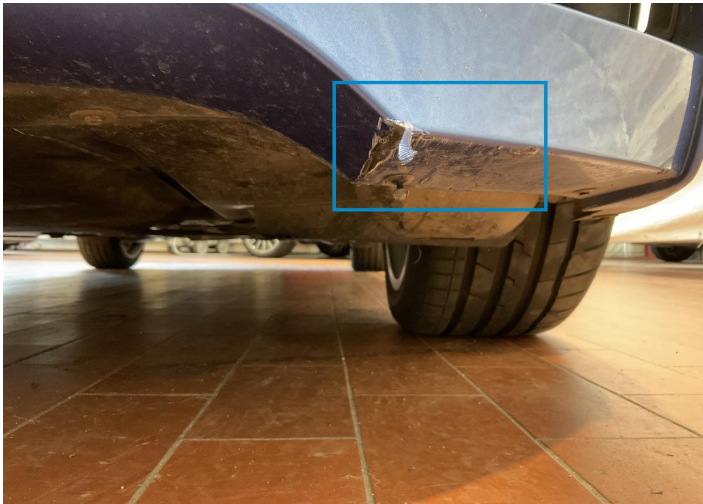
Component		Damage	Comments
1	Other	Anomalyon Element	
2	Bumper / Front	Paint / Scratch / Scuff	
3	Bumper / Front	Paint / Scratch / Scuff	
4	Rim / Front Left	Out of Bodywork / Scratch	
5	Rim / Back Left	Out of Bodywork / Scratch	
6	Bumper / Back	Paint / Stone Chip	
7	Rim / Back Right	Out of Bodywork / Scratch	
8	Rim / Front Right	Out of Bodywork / Scratch	



1.
Anomaly Element -



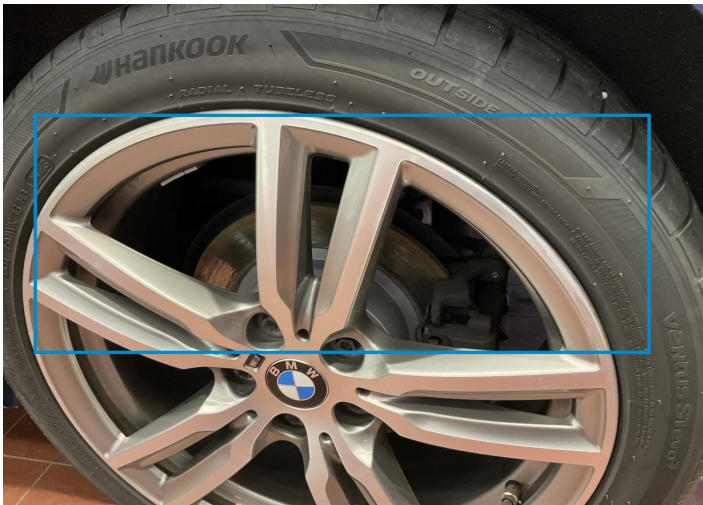
2. Bumper / Front
Paint / Scratch / Scuff -



3. Bumper / Front
Paint / Scratch / Scuff -



4. Rim / Front Left
Out of Bodywork / Scratch -



5. Rim / Back Left
Out of Bodywork / Scratch -



6. Bumper / Back
Paint / Stone Chip -



7. Rim / Back Right
Out of Bodywork / Scratch -



8. Rim / Front Right
Out of Bodywork / Scratch -

Mechanical Condition

Control Lights

Display Defect	✓	Service Light	✓
ABS Warning Light	✓	ESP Fault/Traction Control Malfunction Light	✓
Diesel Particulate Filter Light	✓	Airbag Warning Light	✓
Oil Pressure Warning Light	✓	Brake Warning Light	✓
Power Steering Warning Light	✓	Alternator / Battery	✓
All - wheel Drive	✓	No Dashboard Lights	✓
Tire Pressure Monitoring System	✓		

Equipments Test

Central Locking	✓	Main & Spare Keys Functioning	✓
Electric Windows	✓	Navigation System	✓
Audio Equipment	✓	Parking Sensors / Cameras Functioning	✓
AC / Heating System	✓	Other Equipments	✓

Engine

Engine Status / EML	✓	Engine Leak Visible	✓
Engine Starts	✓		

Gearbox

Gear Box	✓
----------	---

Levels

Brakes Fluid	✓	Coolant Fluid	✓
--------------	---	---------------	---

Test Drive Inspection

Steering Wheel			
Steering Noise / Anomaly		✓	
Engine			
Engine Noise	✓	The Gears Scratch / Skip / Abnormal Operation	✓
Fume Quantity	✓	Power Loss	✓
Brake			
Brake System Anomaly		✓	
General			
Test Driven Status		Not Performed	
✓ <i>No troubles detected, good condition or correct tests, according to vehicle age and mileage</i>			
! <i>Damages or malfunction detected that requires repairs by the buyer</i>			
NA <i>Not applicable</i>			
= <i>Not tested</i>			

Disclaimer

Please also note the "UserGuide condition report", which shows the scope of the vehicle description.

[User Guide](#)