



## BMW 2er Active Tourer 218d Active Tourer Aut.

VIN NO WBA2C11050V337641

Registration Number 050V337641



MOT Date



Last Service



Number of Owners



Last Service Mileage



Number of Keys



First Registration Date



2014-11-20

Odometer Reading



181831 km

Country First Registered



Germany

### Inspection Report Summary

Customer	BCA Online	Report Number	P20250903085150
Inspection Date / Place	2025-09-03 / BCA Oberndorf	Cosmetic Grade	2

### Vehicle Summary

Vehicle Condition	Runner	VAT Type	Margin
Fuel Type	Diesel	Road Worthy	Yes
Colour	Silver	Engine Size (cc)	1995
Engine Size	2.0	No of Doors	5
Body Type	Stationwagon / Estate	Drive Train	Front
Seat Colour		No of Seats	5
Seat Covering Name	Schwarz/grau	Seat Covering	Cloth
Charging Cables		NEDC CO2 Rating (q/km)	109
Gearbox Type	Automatic		

### Vehicle History & Documents

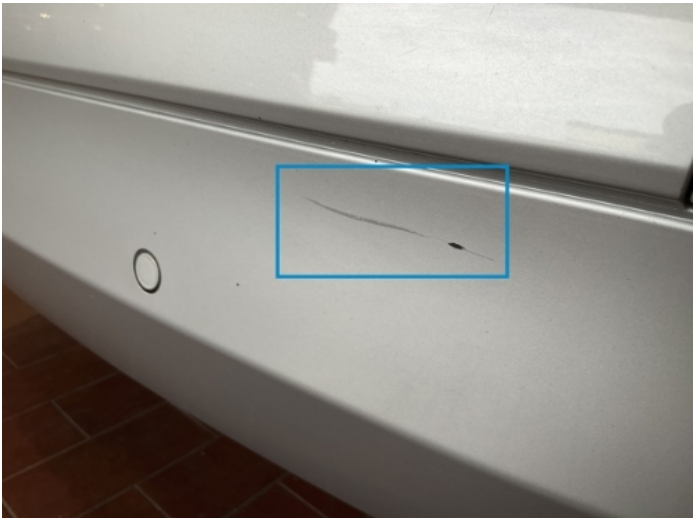
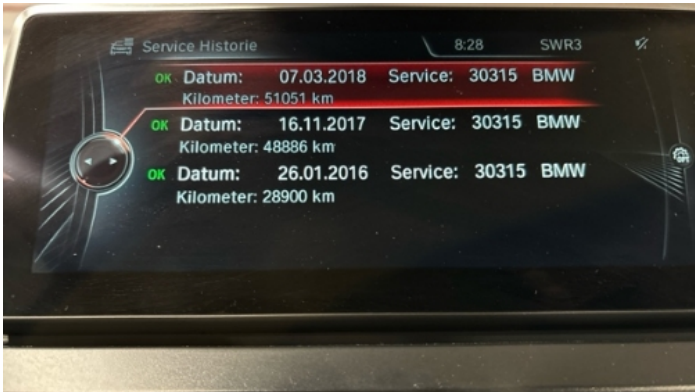
Service Book Available	Incomplete	Next Service Mileage	km
Previous Usage		Imported	No
Manufacturer Warrenty			











Equipment

Tinted Glass	USB Socket	Alloys wheels	Anti-lock braking
Bluetooth telephone interface	Diesel particulate filter	Front parking sensors	Remote adjusting wing mirrors
Roof rails	Split folding rear seats	CD Player	Electrically folding wing mirrors
Leather steering wheel	Radio	Tow ball	Airbag Status
Ambientlighting	Auxiliary Socket	Cruise control	Front fog lamps
Head up Display	Remote central locking	Satellite navigation	Stability control
Central locking	Electrictailgate	LED Headlamps	Rear parking sensors

Equipment Details

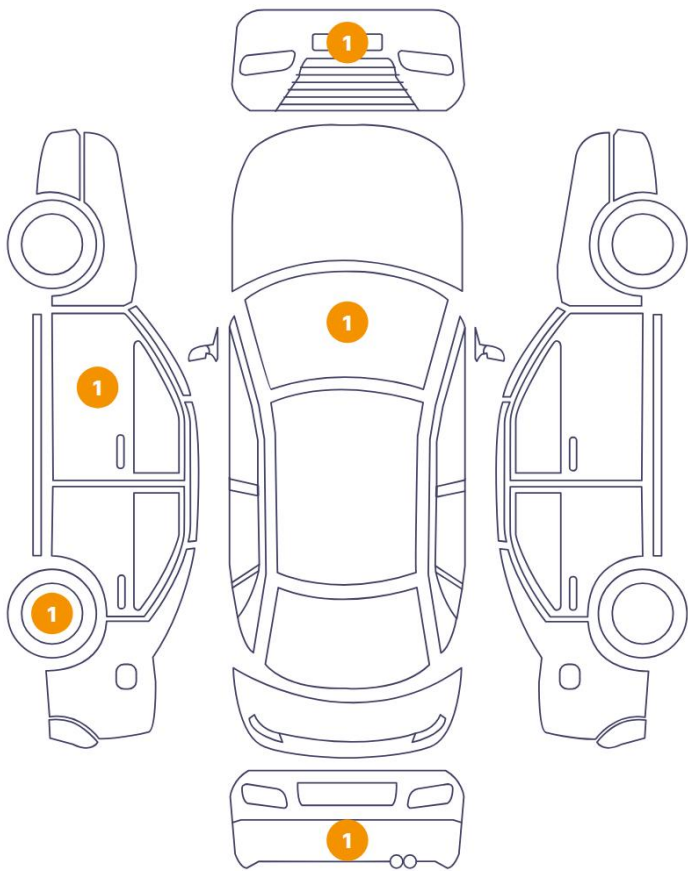
Tow Ball Type	Detachable	Air Conditioning	Dual Zone Climate Control
Alloy Wheel Size	16	Seat Heating	No

Wheels & Tyres

Left Front Tyre Depth	4	Right Rear Tyre Depth	4
Left Rear Tyre Depth	4	Right Front Tyre Depth	4

Cosmetic Damage

5 Schäden

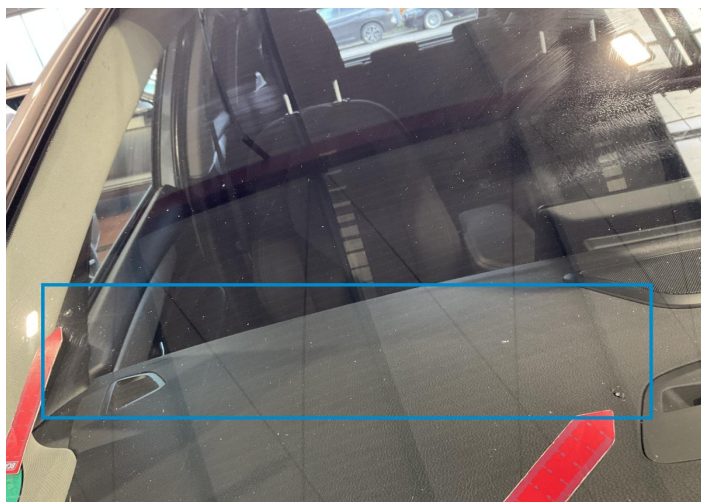


0 Schäden



Component		Damage	Comments
1	Windshield / Front	Glass Break / Impact	
2	Bumper / Front	Paint / Scratch / Scuff	
3	Mirror / Front Left	Paint / Scratch / Scuff	
4	Rim / Back Left	Out of Bodywork / Scratch	
5	Bumper / Back	Paint / Scratch / Scuff	





1. Windshield / Front  
Glass Break / Impact -



2. Bumper / Front  
Paint / Scratch / Scuff -



3. Mirror / Front Left  
Paint / Scratch / Scuff -



4. Rim / Back Left  
Out of Bodywork / Scratch -



5. Bumper / Back  
Paint / Scratch / Scuff -

## Mechanical Condition

### Equipments Test

Central Locking	✓	Electric Windows	✓
Audio Equipment	✓	AC / Heating System	✓
Main & Spare Keys Functioning	✓	Parking Sensors / Cameras Functioning	✓
Other Equipments	✓		

### Control Lights

ABS Warning Light	✓	ESP Fault/Traction Control Malfunction Light	✓
Diesel Particulate Filter Light	✓	Airbag Warning Light	✓
Oil Pressure Warning Light	✓	Brake Warning Light	✓
Power Steering Warning Light	✓	Alternator / Battery	✓
No Dashboard Lights	✓	Display Defect	✓
Service Light	✓	Tire Pressure Monitoring System	✓

### Engine

Engine Status / EML	✓	Engine Leak Visible	✓
Engine Starts	✓		

### Gearbox

Gear Box	✓
----------	---

### Levels

Brakes Fluid	✓	Coolant Fluid	✓
--------------	---	---------------	---




Test Drive Inspection

Steering Wheel


Steering | Noise / Anomaly 

Engine

Engine Noise  The Gears Scratch / Skip / Abnormal Operation 

Fume Quantity  Power Loss 

Brake

Brake System Anomaly 

General

Test Driven Status Not Performed

 *No troubles detected, good condition or correct tests, according to vehicle age and mileage*

 *Damages or malfunction detected that requires repairs by the buyer*

 *Not applicable*

 *Not tested*

Disclaimer

Please also note the "UserGuide condition report", which shows the scope of the vehicle description. [User Guide](#)