



BMW 2er Active Tourer 218i Active Tourer

VIN NO WBA2A31040V855936
Registration Number 040V855936



MOT Date

2026-09-01

Last Service

2025-06-10

Number of Owners

1

Last Service Mileage

71255

Number of Keys

2

First Registration Date

2017-09-28

Odometer Reading

72832 km

Country First Registered

Germany

Inspection Report Summary

Customer	BCA Online	Report Number	P20251007153601
Inspection Date / Place	2025-10-07 / BCA Oberndorf	Cosmetic Grade	2

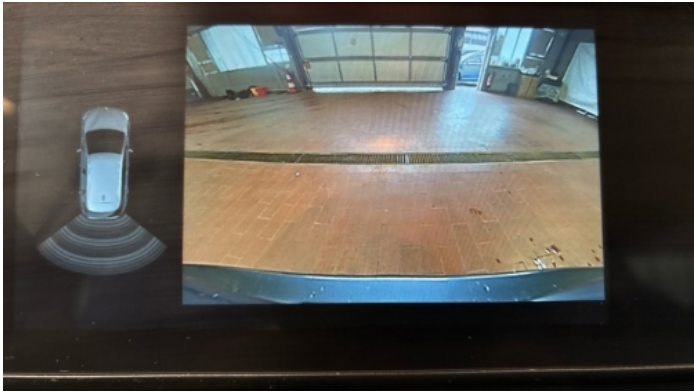
Vehicle Summary

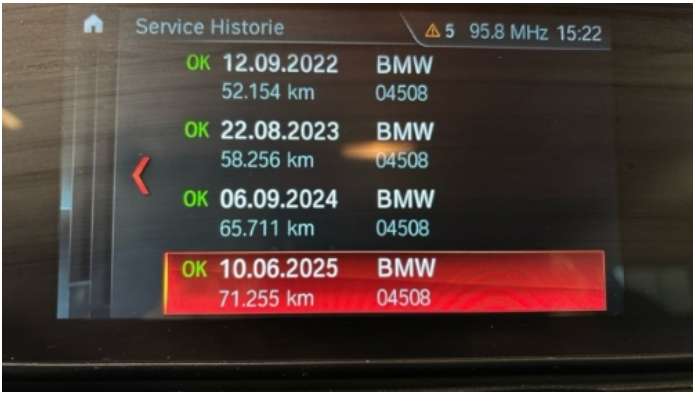
Vehicle Condition	Runner	VAT Type	Margin
Fuel Type	Petrol	Road Worthy	Yes
Colour	Grey	Engine Size (cc)	1499
Engine Size	1.5	No of Doors	5
Body Type	Stationwagon / Estate	Drive Train	Front
Seat Colour		No of Seats	5
Seat Covering Name	Schwarz	Seat Covering	Cloth
Charging Cables		NEDC CO2 Rating (q/km)	115
Gearbox Type	Manual		

Vehicle History & Documents

Service Book Available	Present	Next Service Mileage	km
Previous Usage		Imported	No
Manufacturer Warrenty			







Equipment

Tinted Glass	USB Socket	Alloys wheels	Bluetooth telephone interface
Remote adjusting wing mirrors	Reversing Camera	Satellite navigation	Stability control
Central locking	LED Headlamps	Rear parking sensors	Tow ball
Airbag Status	Anti-lock braking	Front fog lamps	Remote central locking
Roof rails	Split folding rear seats	CD Player	Leather steering wheel

Radio

Equipment Details

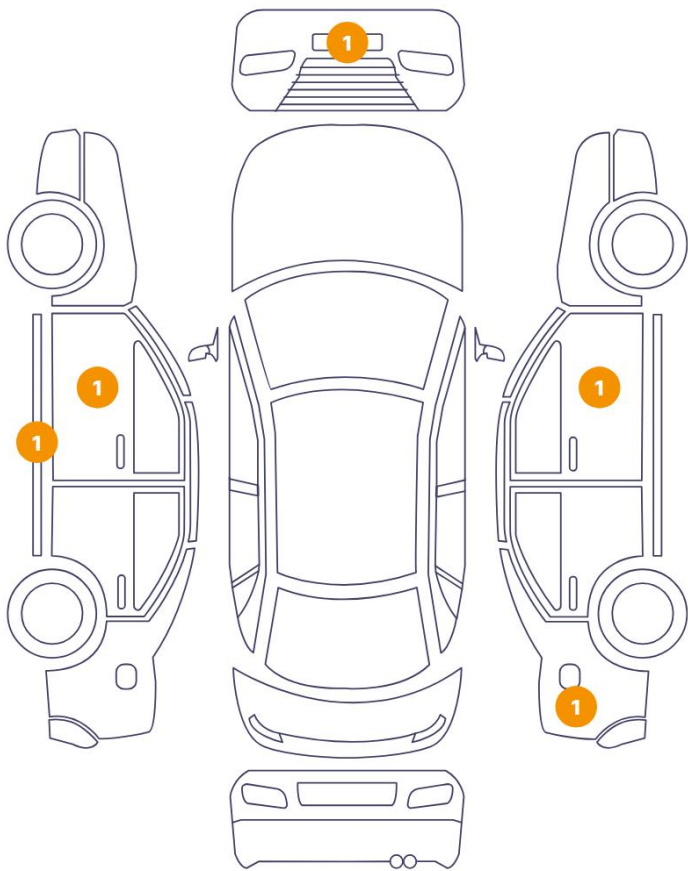
Tow Ball Type	Detachable	Air Conditioning	Dual Zone Climate Control
Alloy Wheel Size	16	Seat Heating	Front

Wheels & Tyres

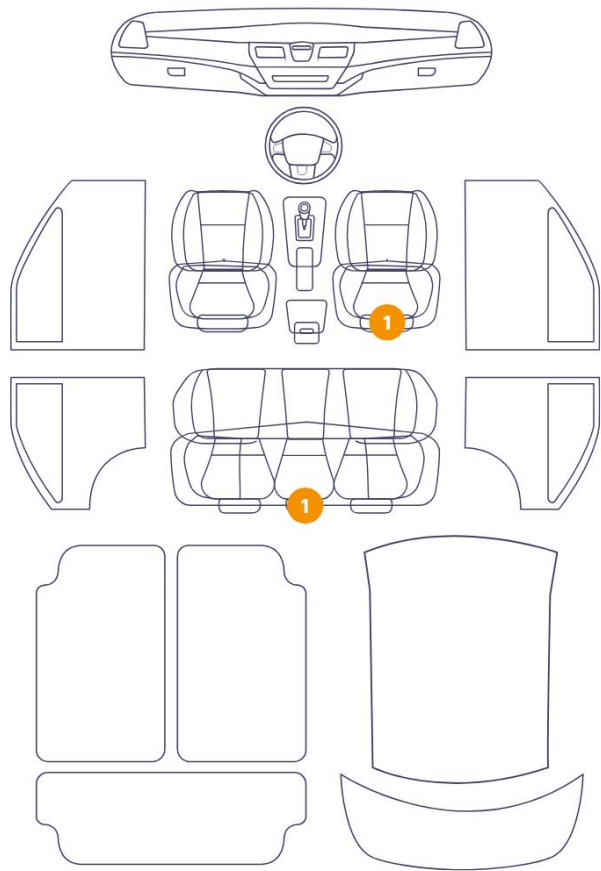
Right Rear Tyre Depth	7	Left Rear Tyre Depth	7
Right Front Tyre Depth	6	Left Front Tyre Depth	6

Cosmetic Damage

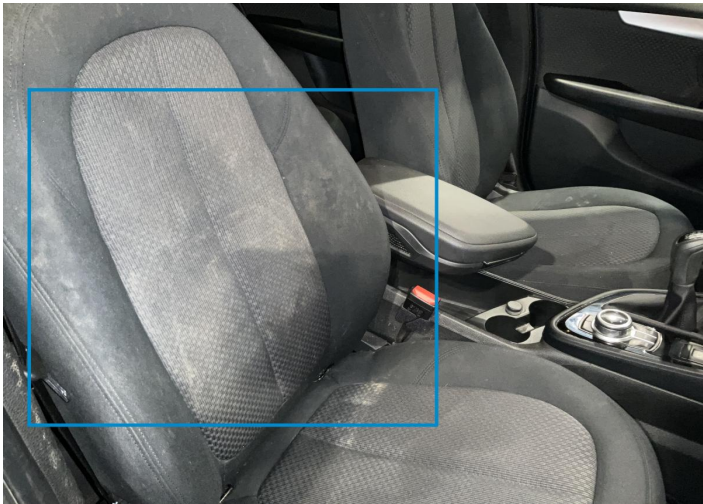
5 Schäden



2 Schäden



Component	Damage	Comments
1 Seat / Front Right	Interior / Dirty	
2 Seat / Back Center	Interior / Dirty	
3 Bumper / Front	Paint / Scratch / Scuff	
4 Fender / Back Right	Paint / Scratch / Line	
5 Door / Front Right	Bodywork / Dent / Dent	
6 Rocker Panel / Center Left	Paint / Stone Chip	
7 Door / Front Left	Paint / Stone Chip	



1. Seat / Front Right
Interior / Dirty -



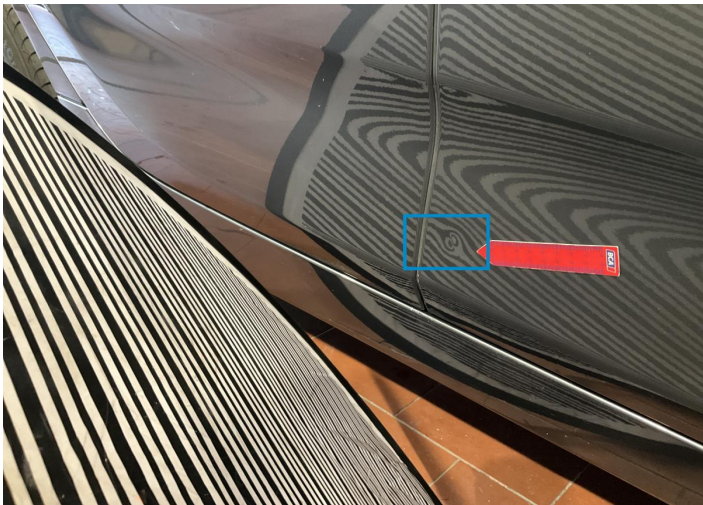
2. Seat / Back Center
Interior / Dirty -



3. Bumper / Front
Paint / Scratch / Scuff -



4. Fender / Back Right
Paint / Scratch / Line -



5. Door / Front Right
Bodywork / Dent / Dent -



6. Rocker Panel / Center Left
Paint / Stone Chip -



7. Door / Front Left
Paint / Stone Chip -

Mechanical Condition

Equipments Test

Central Locking	✓	Electric Windows	✓
Navigation System	✓	Audio Equipment	✓
AC / Heating System	✓	Main & Spare Keys Functioning	✓
Parking Sensors / Cameras Functioning	✓	Other Equipments	✓

Control Lights

ABS Warning Light	✓	ESP Fault/Traction Control Malfunction Light	✓
Airbag Warning Light	✓	Oil Pressure Warning Light	✓
Brake Warning Light	✓	Power Steering Warning Light	✓
Alternator / Battery	✓	No Dashboard Lights	✓
Display Defect	✓	Service Light	!

Engine

Engine Status / EML	✓	Engine Leak Visible	✓
Engine Starts	✓		

Gearbox

Gear Box	!
----------	---

Levels

Brakes Fluid	✓	Coolant Fluid	✓
--------------	---	---------------	---

Test Drive Inspection

Steering Wheel

Steering | Noise / Anomaly

Engine

Engine Noise The Gears Scratch / Skip / Abnormal Operation

Fume Quantity Power Loss

Brake

Brake System Anomaly

Clutch

Clutch Functioning

General

Test Driven Status Not Performed

- No troubles detected, good condition or correct tests, according to vehicle age and mileage
- Damages or malfunction detected that requires repairs by the buyer
- Not applicable
- Not tested

Disclaimer

Please also note the "UserGuide condition report", which shows the scope of the vehicle description. [User Guide](#)