



BMW 2er Active Tourer 218i Active Tourer Aut.

VIN NO WBA2A31010V404317
Registration Number 010V404317



MOT Date

2026-02-01

Last Service

2025-03-27

Number of Owners

1

Last Service Mileage

20272

Number of Keys

2

First Registration Date

2015-03-04

Odometer Reading

21222 km

Country First Registered

Germany

Inspection Report Summary

Customer	BCA Online	Report Number	P20250916124245
Inspection Date / Place	2025-09-16 / BCA Oberndorf	Cosmetic Grade	3

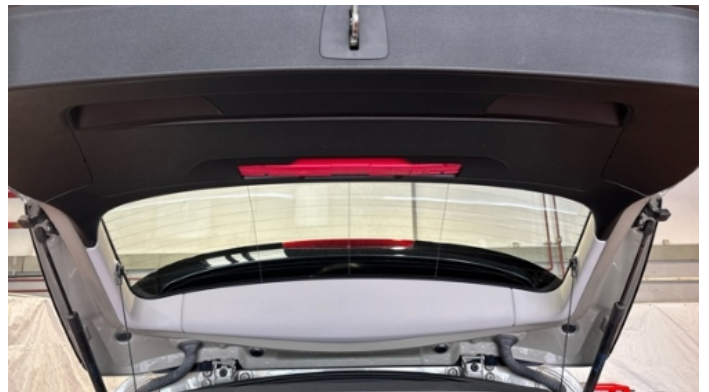
Vehicle Summary

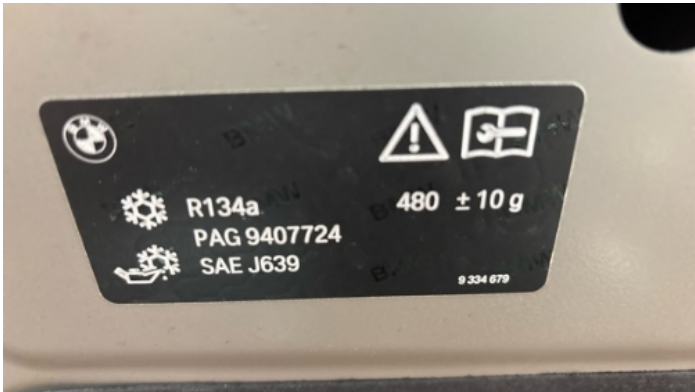
Vehicle Condition	Runner	VAT Type	Margin
Fuel Type	Petrol	Road Worthy	Yes
Colour	Beige	Engine Size (cc)	1499
Engine Size	1.5	No of Doors	5
Body Type	Stationwagon / Estate	Drive Train	Front
Seat Colour		No of Seats	5
Seat Covering Name		Seat Covering	Cloth
Charging Cables		NEDC CO2 Rating (q/km)	119
Gearbox Type	Automatic		

Vehicle History & Documents

Service Book Available	Present	Next Service Mileage	km
Previous Usage		Imported	No
Manufacturer Warrenty			







Equipment

USB Socket	Alloys wheels	Auxiliary Socket	Front fog lamps
Remote central locking	Stability control	Leather steering wheel	Rear parking sensors
Airbag Status	Anti-lock braking	Bluetooth telephone interface	Remote adjusting wing mirrors
Split folding rear seats	Electrically folding wing mirrors	Radio	

Equipment Details

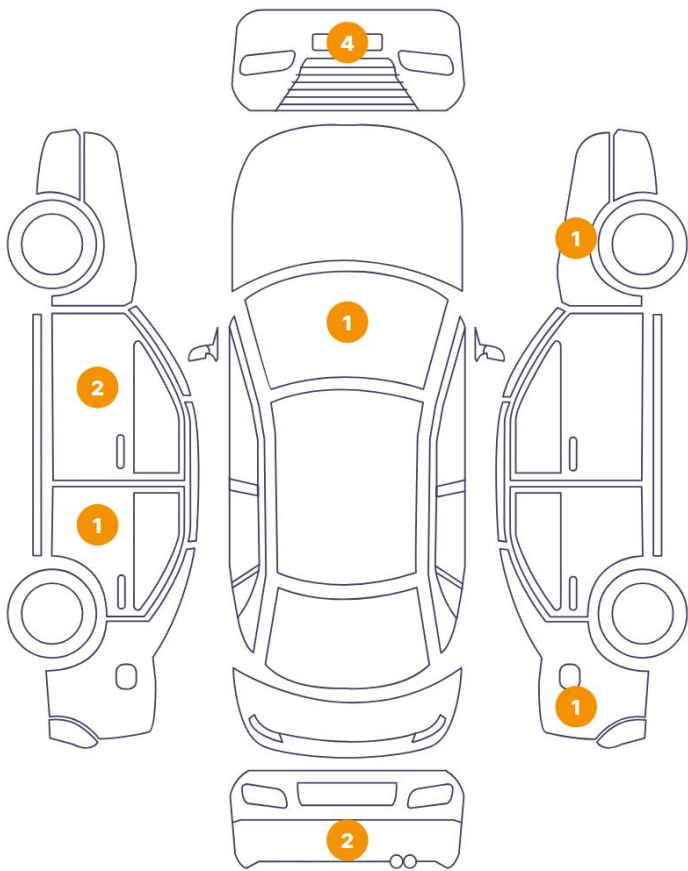
Air Conditioning	Yes	Alloy Wheel Size	16
Seat Heating	Front		

Wheels & Tyres

Right Front Tyre Depth	5	Left Front Tyre Depth	5
Right Rear Tyre Depth	5	Left Rear Tyre Depth	5

Cosmetic Damage

12 Schäden



0 Schäden



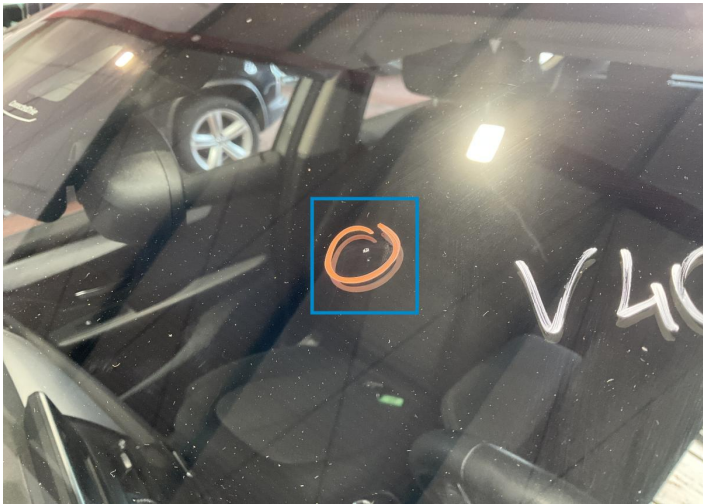
Component		Damage	Comments
1	Door / Back Left	Paint / Poor Previous Repair	
2	Door / Front Left	Paint / Poor Previous Repair	
3	Windshield / Front	Glass Break / Impact	
4	Fender / Front Right	Paint / Poor Previous Repair	
5	Side Panel / Back Right	Paint / Poor Previous Repair	
6	Bumper / Back	Paint / Scratch / Scuff	
7	Door / Front Left	Bodywork / Dent / Dent	
8	Bumper / Front	Paint / Scratch / Scuff	
9	Bumper / Front	Paint / Scratch / Scuff	
10	Bumper / Front	Paint / Scratch / Scuff	
11	Bumper / Front	Paint / Scratch / Scuff	
12	Bumper / Back	Paint / Scratch / Scuff	



1. Door / Back Left
Paint / Poor Previous Repair -



2. Door / Front Left
Paint / Poor Previous Repair -



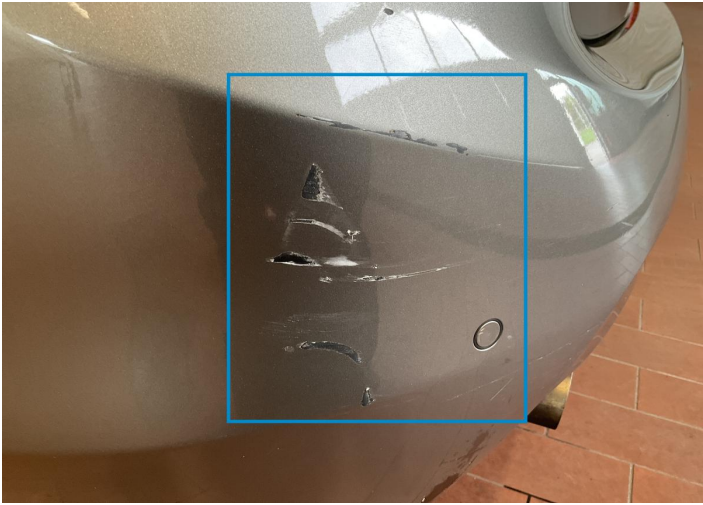
3. Windshield / Front
Glass Break / Impact -



4. Fender / Front Right
Paint / Poor Previous Repair -



5. Side Panel / Back Right
Paint / Poor Previous Repair -



6. Bumper / Back
Paint / Scratch / Scuff -



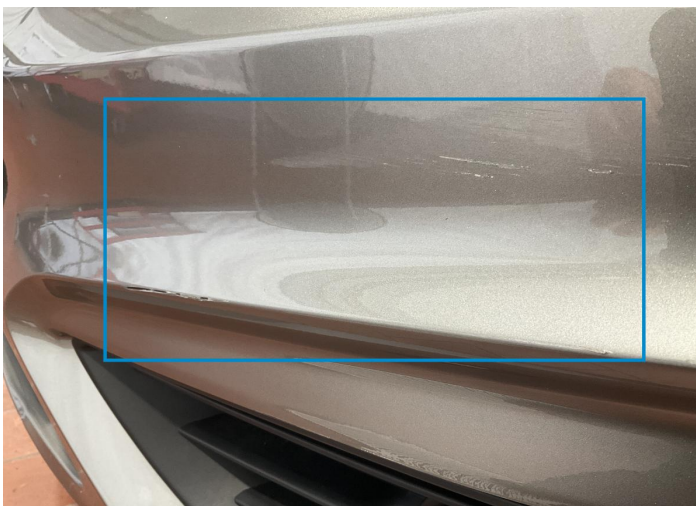
7. Door / Front Left
Bodywork / Dent / Dent -



8. Bumper / Front
Paint / Scratch / Scuff -



9. Bumper / Front
Paint / Scratch / Scuff -



10. Bumper / Front
Paint / Scratch / Scuff -



11. Bumper / Front
Paint / Scratch / Scuff -



12. Bumper / Back
Paint / Scratch / Scuff -

Mechanical Condition

Control Lights			
Display Defect	✓	Service Light	✓
ABS Warning Light	✓	ESP Fault/Traction Control Malfunction Light	✓
Airbag Warning Light	✓	Oil Pressure Warning Light	✓
Brake Warning Light	✓	Power Steering Warning Light	✓
Alternator / Battery	✓	No Dashboard Lights	✓
Equipments Test			
Central Locking	✓	Electric Windows	✓
Audio Equipment	✓	Parking Sensors / Cameras Functioning	✓
AC / Heating System	✓		
Engine			
Engine Status / EML	✓	Engine Leak Visible	✓
Engine Starts	✓		
Gearbox			
Gear Box	✓		
Levels			
Coolant Fluid	✓		

Test Drive Inspection

Steering Wheel			
Steering Noise / Anomaly	✓		
Engine			
Engine Noise	✓	Fume Quantity	✓
Power Loss	✓		
General			
Test Driven Status	Not Performed		

- ✔ *No troubles detected, good condition or correct tests, according to vehicle age and mileage*
- ❗ *Damages or malfunction detected that requires repairs by the buyer*
- NA *Not applicable*
- ☐ *Not tested*

Disclaimer

Please also note the "UserGuide condition report", which shows the scope of the vehicle description.

[User Guide](#)