



# BMW 1er 118d

VIN NO WBA1S510X05A85040  
Registration Number 0X05A85040



MOT Date	Number of Owners	Number of Keys	Odometer Reading
2026-11-01	3	1	108947 km
Last Service	Last Service Mileage	First Registration Date	Country First Registered
-	-	2015-11-24	Germany

## Inspection Report Summary

Customer	BCA Online	Report Number	P20251010082423
Inspection Date / Place	2025-10-10 / SULOJA Brackel	Cosmetic Grade	4

## Vehicle Summary

Vehicle Condition	Runner	VAT Type	Margin
Fuel Type	Diesel	Road Worthy	Yes
Colour	Grey	Engine Size (cc)	1995
Engine Size	2.0	No of Doors	5
Body Type	Sedan	Drive Train	Rear
Seat Colour		No of Seats	5
Seat Covering Name		Seat Covering	Cloth
Charging Cables		NEDC CO2 Rating (q/km)	109
Gearbox Type	Manual		

## Vehicle History & Documents

Service Book Available	-	Next Service Mileage	km
Previous Usage		Imported	No
Manufacturer Warrenty			









Equipment

Trip Computer	Airbag Status	Anti-lock braking	Bluetooth telephone interface
Diesel particulate filter	Front parking sensors	Remote central locking	Split folding rear seats
CD Player	LED Headlamps	Rain sensitive windscreen wipers	USB Socket
Alloys wheels	Auxiliary Socket	Cruise control	Front fog lamps
Remote adjusting wing mirrors	Satellite navigation	Stability control	Leather steering wheel
Radio	Rear parking sensors		

Equipment Details

Air Conditioning	Dual Zone Climate Control	Alloy Wheel Size	16
Seat Heating	Front		

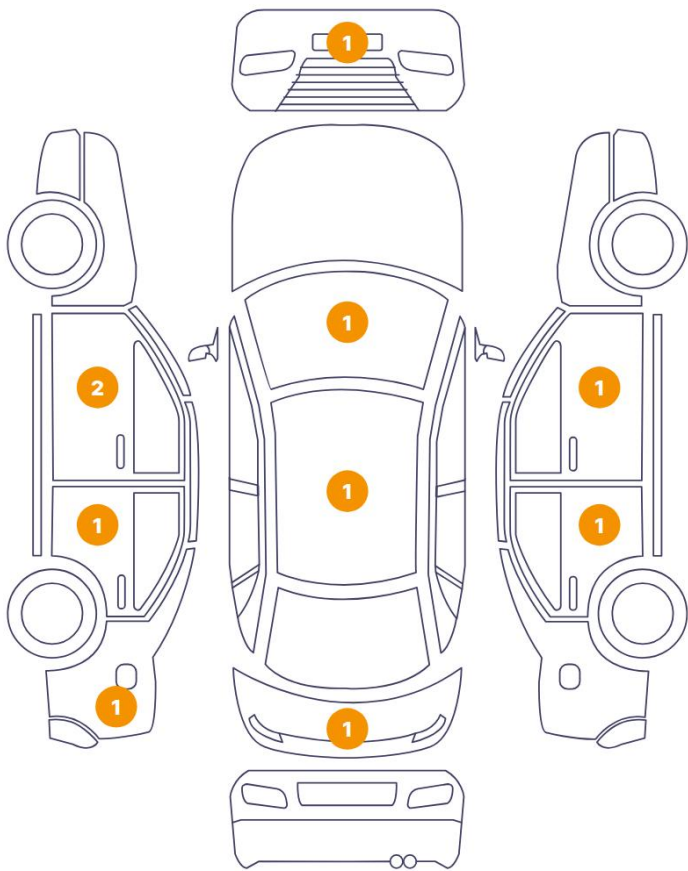
Wheels & Tyres

Left Rear Tyre Depth	5	Right Front Tyre Depth	5
Left Front Tyre Depth	5	Right Rear Tyre Depth	5

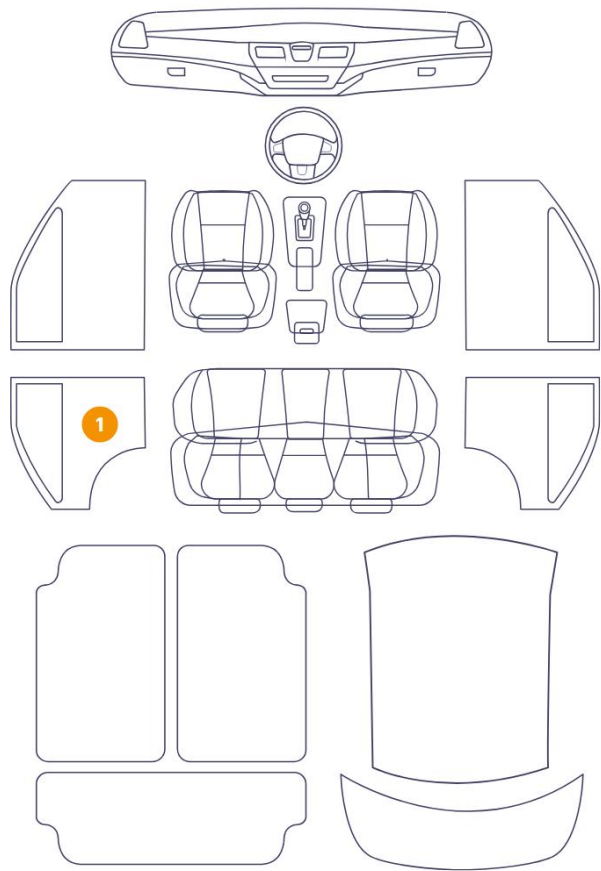


Cosmetic Damage

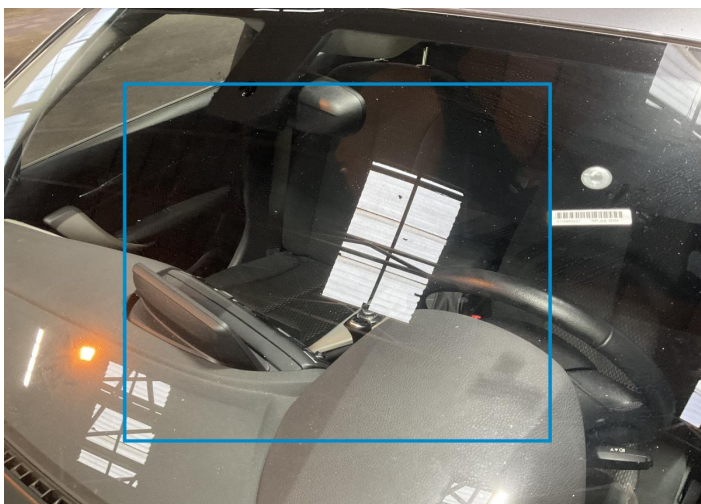
10 Schäden



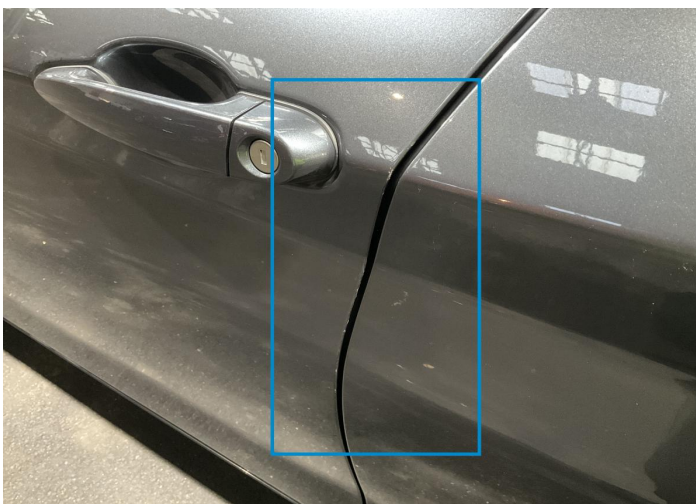
1 Schäden



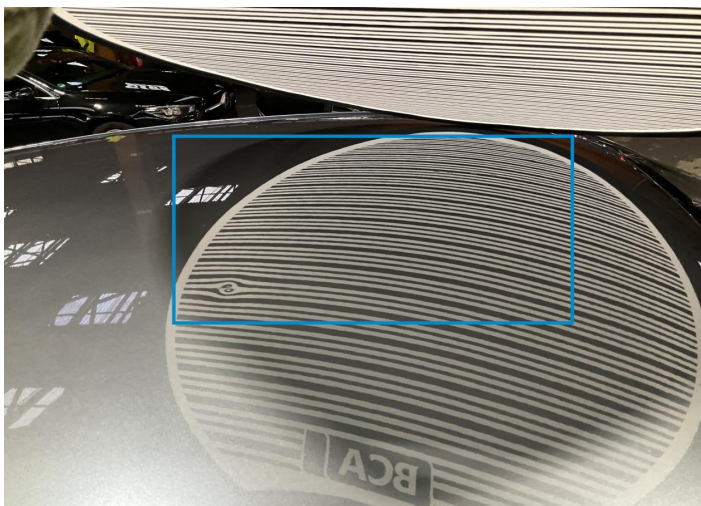
Component		Damage	Comments
1	Windshield / Front	Glass Break / Scratch / Scratch	
2	Door / Front Left	Paint / Scratch / Scuff	
3	Roof	Bodywork / Dent / Dent	
4	Tailgate	Paint / Scratch / Scuff	
5	Mirror / Front Left	Paint / Scratch / Scuff	
6	Door / Back Left	Paint / Scratch / Scuff	
7	Panel Filling / Back Left	Interior / Scratched	
8	Door / Back Right	Paint / Scratch / Scuff	
9	Door / Front Right	Paint / Scratch / Scuff	
10	Bumper / Front	Paint / Scratch / Scuff	
11	Side Panel / Back Left	Paint / Scratch / Scuff	



1. Windshield / Front  
Glass Break / Scratch / Scratch -



2. Door / Front Left  
Paint / Scratch / Scuff -



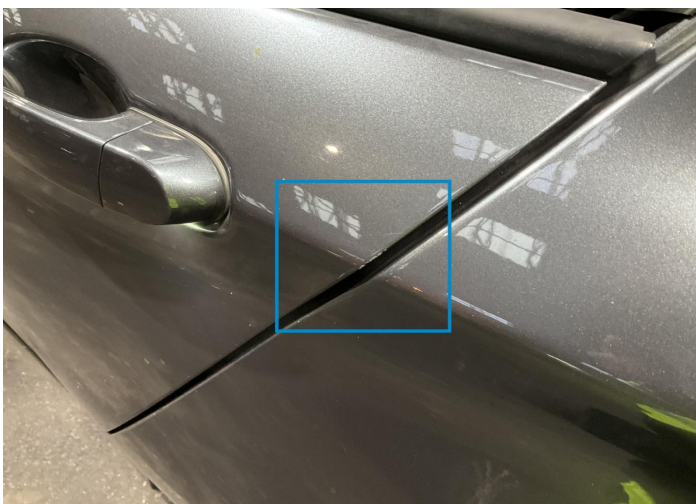
3. Roof  
Bodywork / Dent / Dent -



4. Tailgate  
Paint / Scratch / Scuff -



5. Mirror / Front Left  
Paint / Scratch / Scuff -



6. Door / Back Left  
Paint / Scratch / Scuff -





7. Panel Filling / Back Left  
Interior / Scratched -



8. Door / Back Right  
Paint / Scratch / Scuff -



9. Door / Front Right  
Paint / Scratch / Scuff -



10. Bumper / Front  
Paint / Scratch / Scuff -



11. Side Panel / Back Left  
Paint / Scratch / Scuff -



## Mechanical Condition

### Control Lights

ABS Warning Light	✓	ESP Fault/Traction Control Malfunction Light	✓
Diesel Particulate Filter Light	✓	Airbag Warning Light	✓
Oil Pressure Warning Light	✓	Brake Warning Light	✓
Power Steering Warning Light	✓	Alternator / Battery	✓
No Dashboard Lights	✓	Display Defect	✓
Tire Pressure Monitoring System	✓		

### Engine

Engine Status / EML	✓	Engine Leak Visible	✓
Engine Starts	✓		

### Gearbox

Gear Box	✓
----------	---

### Equipments Test

Electric Windows	✓	Navigation System	✓
Audio Equipment	✓	AC / Heating System	✓
Main & Spare Keys Functioning	✓	Parking Sensors / Cameras Functioning	✓

### Levels

Brakes Fluid	✓	Coolant Fluid	✓
--------------	---	---------------	---

Test Drive Inspection

Steering Wheel

Steering | Noise / Anomaly

Engine

Engine Noise The Gears Scratch / Skip / Abnormal Operation

Fume Quantity Power Loss

Brake

Brake System Anomaly

Clutch

Clutch Functioning

General

Test Driven Status

- No troubles detected, good condition or correct tests, according to vehicle age and mileage
- Damages or malfunction detected that requires repairs by the buyer
- Not applicable
- Not tested

Disclaimer

Please also note the "UserGuide condition report", which shows the scope of the vehicle description. [User Guide](#)