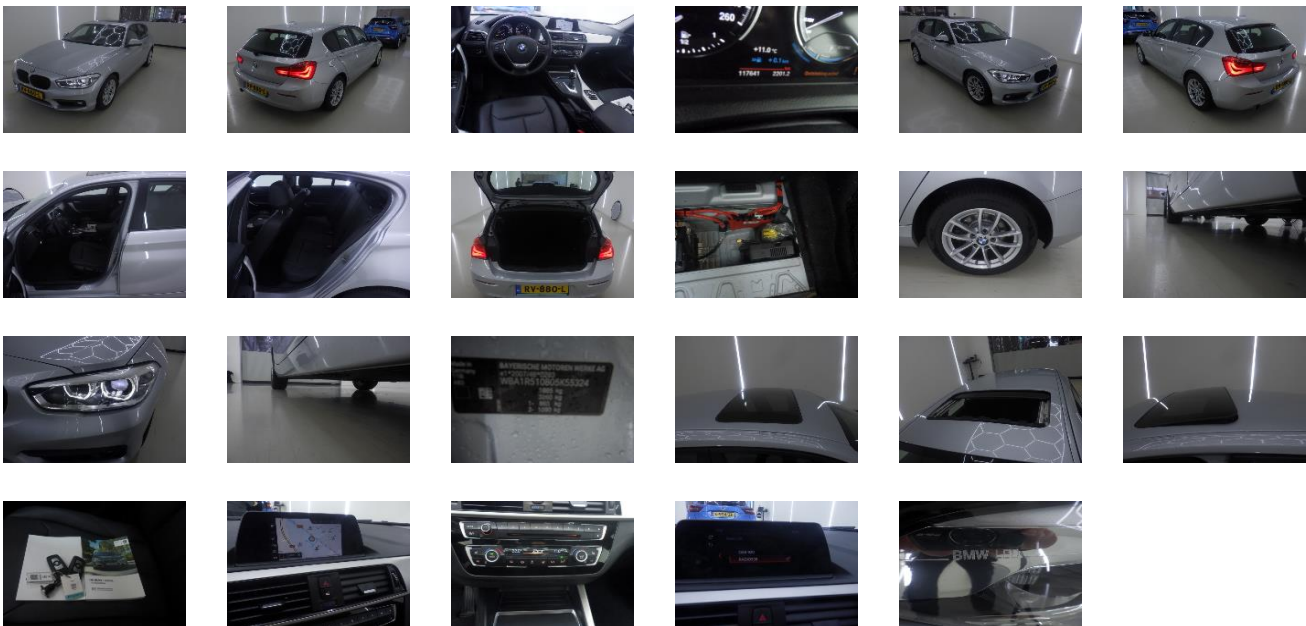


### Vehicle details

VIN	WBA1R5108 05K55324	Brand	BMW	Maintenance date	-
Licence Plate	RV-88-0L	Model	1-Serie 118i 136pk Aut Corporate Lease Steptronic	Maintenance mileage	-
Registration date	16/02/2018	Year	2018	Exterior Color	Grey Metallic
Odometer	117 461 km	Engine size	1499	interior Color	Black
Fuel	Petrol	Body Type	-	Next technical inspection	-
Seats	5	Transmission	Automatic	CO2	-
Doors	5	Gears	-		

### Inspection Details

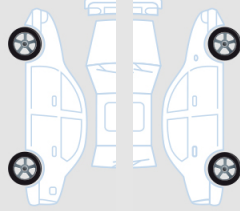
Inspection date	07/04/2026	Inspection loc.	Dekra Ayvens
-----------------	------------	-----------------	--------------



Generic equipment	Removable element	Technical Document
Automated air-conditioning ✓	Spare wheel kit ✓	User manual ✓
Cruise control ✓	Rear parcel shelf ✓	Spare key ✓
Leather ✓		Remote key ✓
GPS system ✓		
Sliding roof ✓		
Alloy wheel rims ✓		
Automatic Gearbox ✓		
Heating seats ✓		
Metallic paint ✓		
Central locking ✓		
Electric windows ✓		
Park Distance Control ✓		
Audio System ✓		
Led lighting ✓		

## Tyres

Continental 205/55/16 Summer 7.5 mm



Continental 205/55/16 Summer 7.5 mm



Pirelli 205/55/16 Summer 6.0 mm

Pirelli 205/55/16 Summer 6.0 mm

## Exterior

1



Part	Bonnet
Position	-
Damages	Stone impact
Severity	Diameter (mm) > 4
Repair mode	Lumpsum repair

2



Part	Grille
Position	-
Damages	Broken
Severity	-
Repair mode	Replace

3



Part	Door
Position	Back left
Damages	Dented
Severity	Diameter (mm) > 20
Repair mode	Smart Repair

4



Part	Bumper
Position	Back
Damages	Dent & Chips
Severity	Diameter (mm) > 20
Repair mode	Repair

5



Part	Wing
Position	Back right
Damages	Dented
Severity	Diameter (mm) > 20
Repair mode	Smart Repair

6



Part	Door
Position	Back right
Damages	Dented
Severity	Diameter (mm) > 20
Repair mode	Smart Repair

7



Part	Door
Position	Front right
Damages	Dented
Severity	Diameter (mm) > 20
Repair mode	Smart Repair