



## BMW 1er 118i Aut.

VIN NO WBA1R510407B10594  
Registration Number 0407B10594



### MOT Date

2027-02-01

### Last Service

2025-02-10

### Number of Owners

2

### Last Service Mileage

75455

### Number of Keys

2

### First Registration Date

2018-03-14

### Odometer Reading

81214 km

### Country First Registered

Germany

## Inspection Report Summary

Customer	BCA Online	Report Number	P20250912144033
Inspection Date / Place	2025-09-12 / BCA Heidenheim	Cosmetic Grade	4

## Vehicle Summary

Vehicle Condition	Runner	VAT Type	Margin
Fuel Type	Petrol	Road Worthy	Yes
Colour	Grey	Engine Size (cc)	1499
Engine Size	1.5	No of Doors	5
Body Type	Sedan	Drive Train	Rear
Seat Colour		No of Seats	5
Seat Covering Name	Schwarz	Seat Covering	Cloth
Charging Cables		NEDC CO2 Rating (q/km)	119
Gearbox Type	Automatic		

## Vehicle History & Documents

Service Book Available	Present	Next Service Mileage	km
Previous Usage	Rental Car	Imported	No
Manufacturer Warranty			







### Equipment

Trip Computer	Airbag Status	Anti-lock braking	Cruise control
Remote adjusting wing mirrors	Satellite navigation	Stability control	Leather steering wheel
Radio	USB Socket	Alloys wheels	Bluetooth telephone interface
Front parking sensors	Remote central locking	Split folding rear seats	CD Player
LED Headlamps	Rear parking sensors		

### Equipment Details

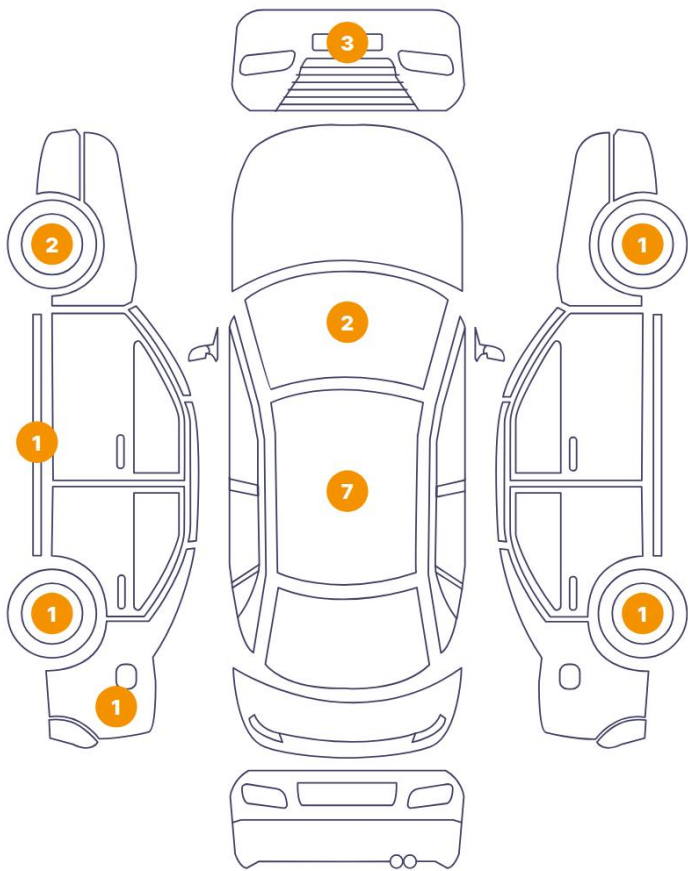
Air Conditioning	Dual Zone Climate Control	Alloy Wheel Size	17
Extra Wheel / Tyre Set	Winter Tyres - Steel	Seat Heating	Front

### Wheels & Tyres

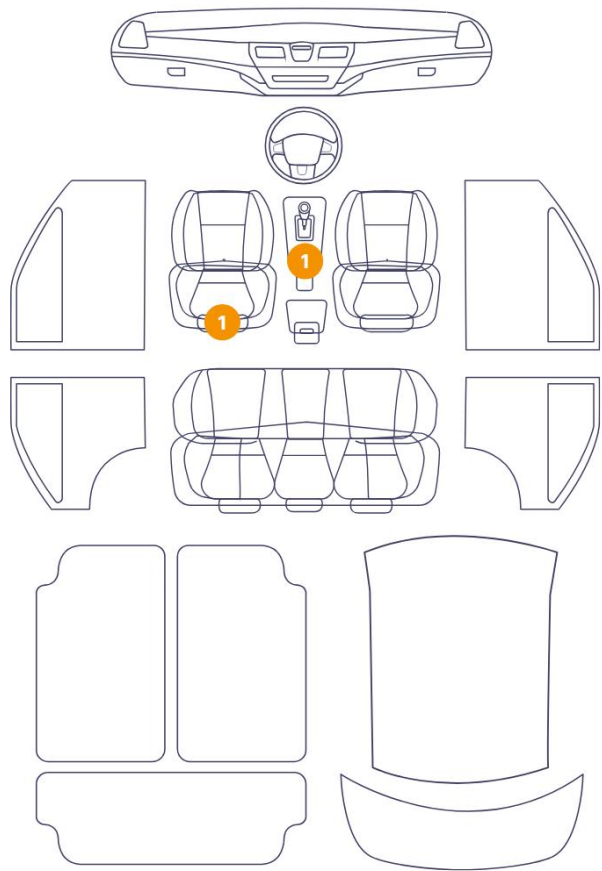
Left Front Tyre Depth	6	Right Front Tyre Depth	5
Right Rear Tyre Depth	5	Left Rear Tyre Depth	5
Extra Wheel - 1 Tyre Depth	6	Extra Wheel - 2 Tyre Depth	7
Extra Wheel - 3 Tyre Depth	6	Extra Wheel - 4 Tyre Depth	7

Cosmetic Damage

19 Schäden



2 Schäden



Component		Damage	Comments
1	Seat / Front Left	Interior / Dirty	
2	Rocker Panel / Center Left	Bodywork / Dent / Dent	
3	Rim / Front Left	Out of Bodywork / Scratch	
4	Rim / Front Left	Out of Bodywork / Scratch	
5	Bumper / Front	Paint / Scratch / Scuff	
6	Bumper / Front	Paint / Scratch / Scuff	
7	Bumper / Front	Bodywork / Breakage	
8	Rim / Front Right	Out of Bodywork / Scratch	
9	Rim / Back Right	Out of Bodywork / Scratch	
10	Roof	Bodywork / Dent / Dent	
11	Roof	Bodywork / Dent / Dent	
12	Side Panel / Back Left	Bodywork / Dent / Dent	

13	Rim / Back Left	Out of Bodywork / Scratch
14	Roof	Bodywork / Dent / Dent
15	Roof	Bodywork / Dent / Dent
16	Roof	Bodywork / Dent / Dent
17	Roof	Bodywork / Dent / Dent
18	Roof	Bodywork / Dent / Dent
19	Windshield / Front	Glass Break / Impact
20	Windshield / Front	Glass Break / Impact
21	Gear Knob	Interior / Worn - out



1. Seat / Front Left  
Interior / Dirty -



2. Rocker Panel / Center Left  
Bodywork / Dent / Dent -



3. Rim / Front Left  
Out of Bodywork / Scratch -



4. Rim / Front Left  
Out of Bodywork / Scratch -



5. Bumper / Front  
Paint / Scratch / Scuff -



6. Bumper / Front  
Paint / Scratch / Scuff -



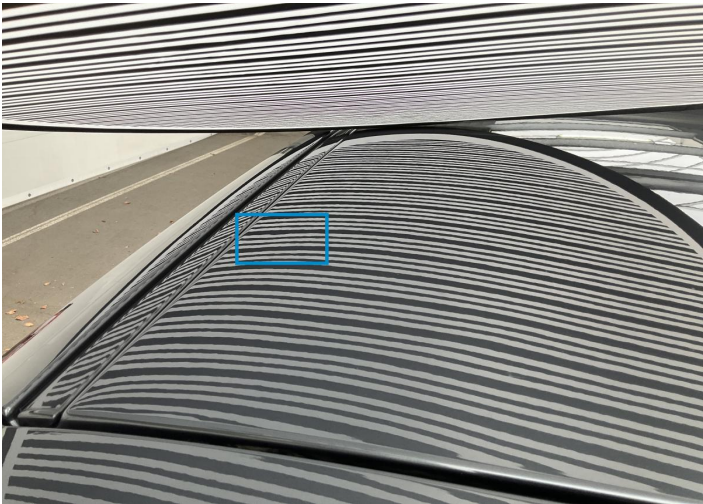
7. Bumper / Front  
Bodywork / Breakage -



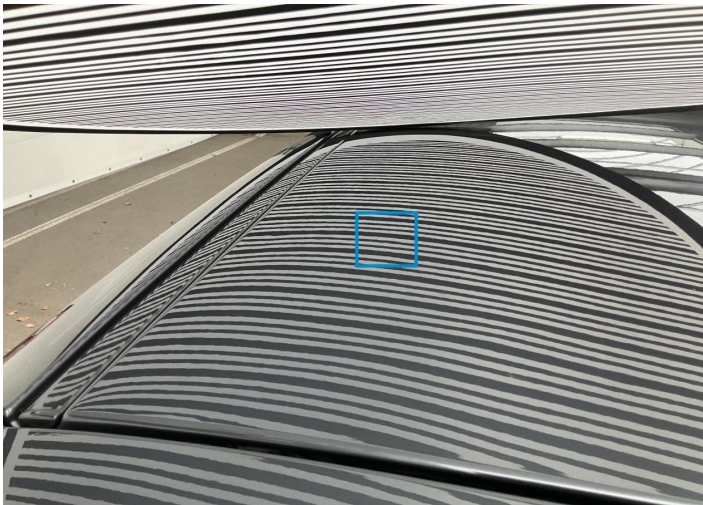
8. Rim / Front Right  
Out of Bodywork / Scratch -



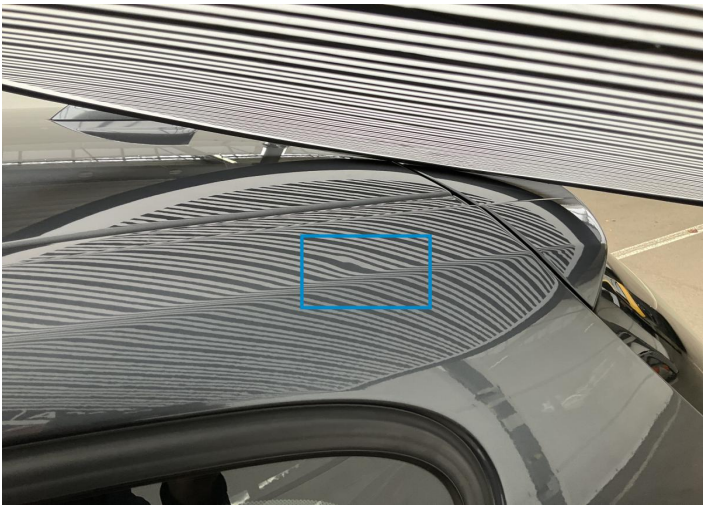
9. Rim / Back Right  
Out of Bodywork / Scratch -



10. Roof  
Bodywork / Dent / Dent -



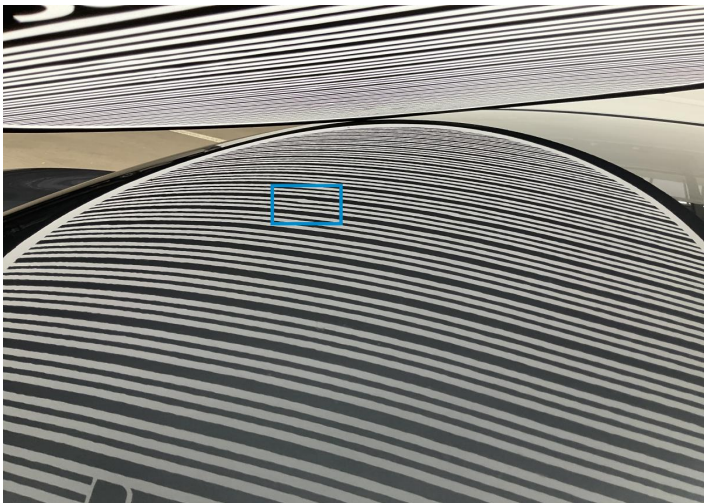
11. Roof  
Bodywork / Dent / Dent -



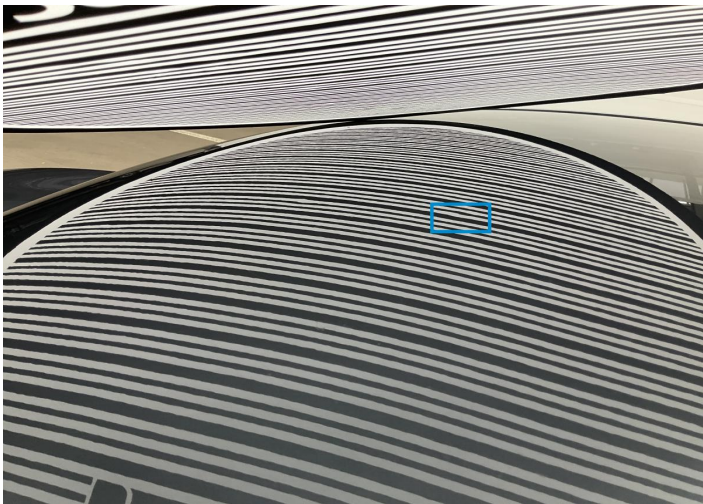
12. Side Panel / Back Left  
Bodywork / Dent / Dent -



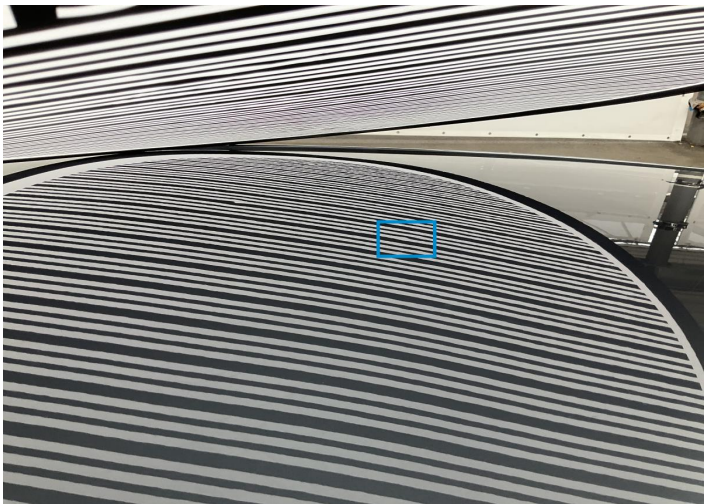
13. Rim / Back Left  
Out of Bodywork / Scratch -



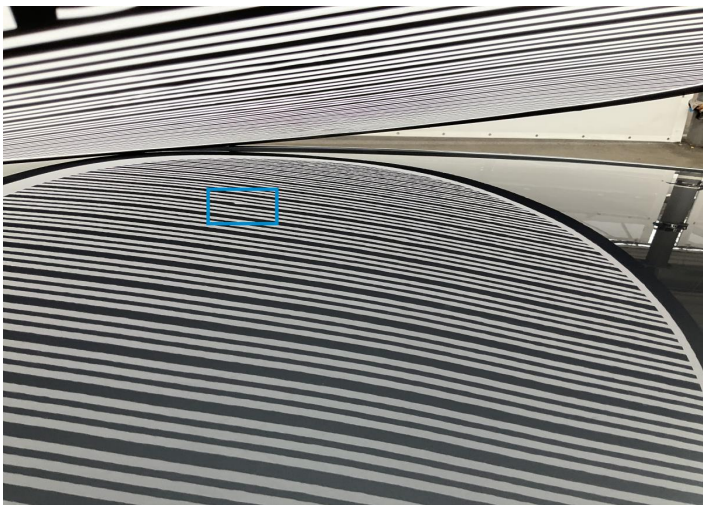
14. Roof  
Bodywork / Dent / Dent -



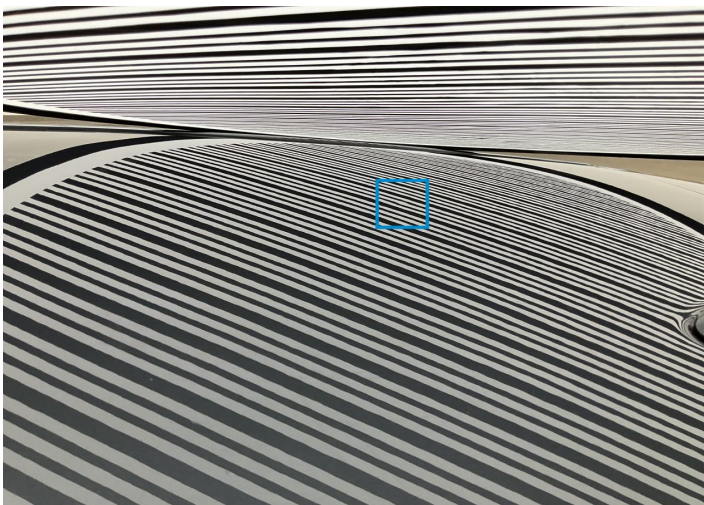
15. Roof  
Bodywork / Dent / Dent -



16. Roof  
Bodywork / Dent / Dent -



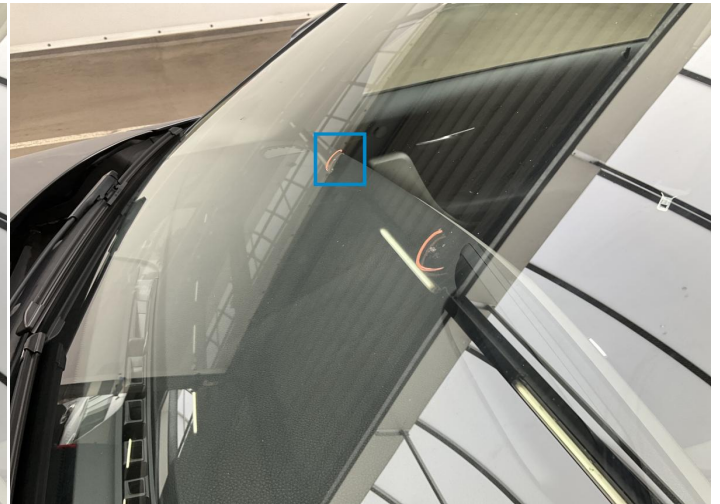
17. Roof  
Bodywork / Dent / Dent -



18. Roof  
Bodywork / Dent / Dent -



19. Windshield / Front  
Glass Break / Impact -



20. Windshield / Front  
Glass Break / Impact -



21. Gear Knob  
Interior / Worn - out -

## Mechanical Condition

### Control Lights

Display Defect	✓	ABS Warning Light	✓
ESP Fault/Traction Control Malfunction Light	✓	Airbag Warning Light	✓
Oil Pressure Warning Light	✓	Brake Warning Light	✓
Power Steering Warning Light	✓	Alternator / Battery	✓
No Dashboard Lights	✓	Tire Pressure Monitoring System	✓

### Equipments Test

Main & Spare Keys Functioning	✓	Electric Windows	✓
Navigation System	✓	Audio Equipment	✓
Parking Sensors / Cameras Functioning	✓	AC / Heating System	✓

### Engine

Engine Status / EML	✓	Engine Leak Visible	✓
Engine Starts	✓		

### Gearbox

Gear Box	✓
----------	---

### Levels

Coolant Fluid	✓	Brakes Fluid	✓
---------------	---	--------------	---

Test Drive Inspection

Steering Wheel

Steering | Noise / Anomaly

Engine

Engine Noise The Gears Scratch / Skip / Abnormal Operation

Fume Quantity Power Loss

Brake

Brake System Anomaly

General

Test Driven Status

- No troubles detected, good condition or correct tests, according to vehicle age and mileage
- Damages or malfunction detected that requires repairs by the buyer
- Not applicable
- Not tested

Disclaimer

Please also note the "UserGuide condition report", which shows the scope of the vehicle description. [User Guide](#)