



BMW 1er 118d Aut.

VIN NO WBA1C11010VV07442
Registration Number 010VV07442



MOT Date

2026-09-01

Last Service



Number of Owners

3

Last Service Mileage



Number of Keys

1

First Registration Date

2013-10-08

Odometer Reading

112321 km

Country First Registered

Germany

Inspection Report Summary

Customer	BCA Online	Report Number	P20250904135255
Inspection Date / Place	2025-09-04 / BCA Oberndorf	Cosmetic Grade	3

Vehicle Summary

Vehicle Condition	Runner	VAT Type	Margin
Fuel Type	Diesel	Road Worthy	Yes
Colour	Grey	Engine Size (cc)	1995
Engine Size	2.0	No of Doors	5
Body Type	Sedan	Drive Train	Rear
Seat Colour		No of Seats	5
Seat Covering Name	Schwarz	Seat Covering	Cloth
Charging Cables		NEDC CO2 Rating (q/km)	110
Gearbox Type	Automatic		

Vehicle History & Documents

Service Book Available	Incomplete	Next Service Mileage	km
Previous Usage		Imported	No
Manufacturer Warrenty			







Equipment

Tow ball	Airbag Status	Anti-lock braking	Bluetooth telephone interface
Front fog lamps	Remote adjusting wing mirrors	Satellite navigation	Stability control
Central locking	Leather steering wheel	Rear parking sensors	USB Socket
Alloys wheels	Auxiliary Socket	Diesel particulate filter	Front parking sensors
Remote central locking	Split folding rear seats	CD Player	Electrically folding wing mirrors

Radio

Equipment Details

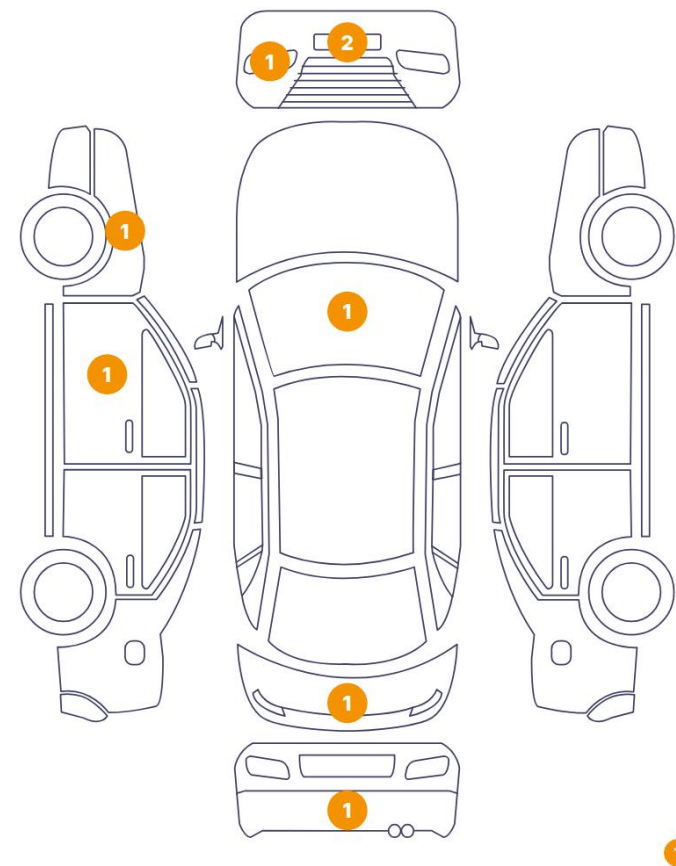
Tow Ball Type	Detachable	Air Conditioning	Three Zone Climate Control
Alloy Wheel Size	18	Seat Heating	Front

Wheels & Tyres

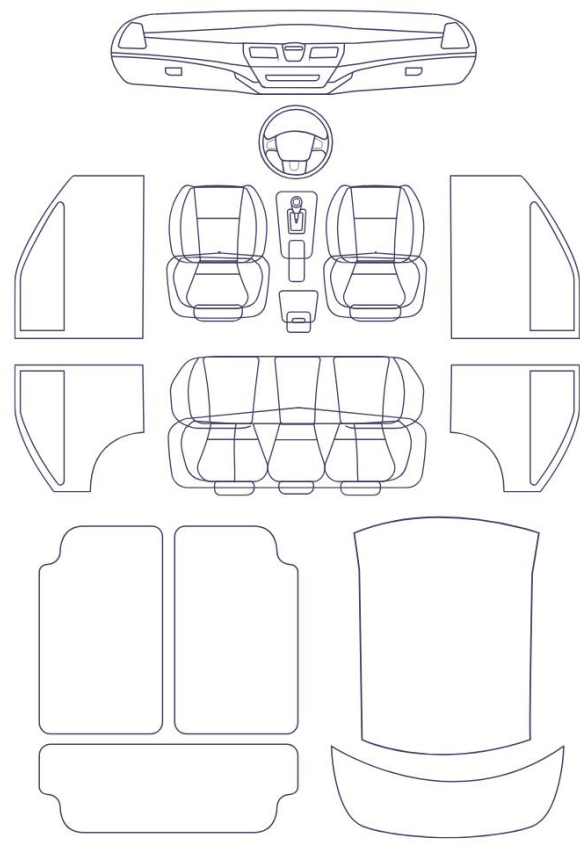
Right Front Tyre Depth	6	Left Front Tyre Depth	6
Right Rear Tyre Depth	6	Left Rear Tyre Depth	6

Cosmetic Damage

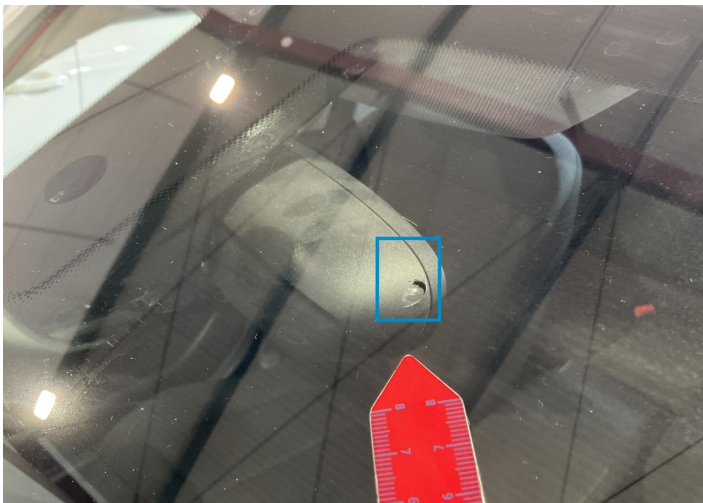
9 Schäden



0 Schäden



Component	Damage	Comments
1 Windshield / Front	Glass Break / Impact	
2 Bumper / Front	Paint / Scratch / Scuff	
3 Halogen Headlight / Front - Left	Paint / Scratch / Scuff	
4 Bumper / Front	Paint / Scratch / Scuff	
5 Other	Anomalyon Element	
6 Fender / Front Left	Paint / Scratch / Scuff	
7 Door Joint / Front Left Middle	Bodywork / Breakage / Crack	
8 Bumper / Back	Paint / Scratch / Line	
9 Tailgate	Paint / Scratch / Line	



1. Windshield / Front
Glass Break / Impact -



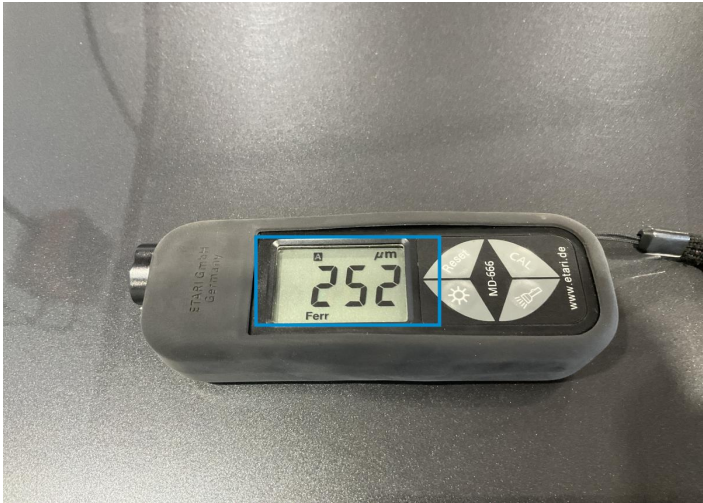
2. Bumper / Front
Paint / Scratch / Scuff -



3. Halogen Headlight / Front - Left
Paint / Scratch / Scuff -



4. Bumper / Front
Paint / Scratch / Scuff -



5.
Anomalyon Element -



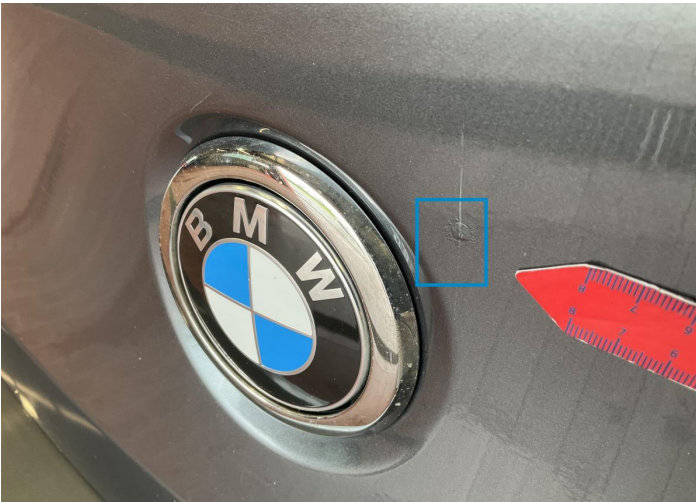
6. Fender / Front Left
Paint / Scratch / Scuff -



7. Door Joint / Front Left Middle
Bodywork / Breakage / Crack -



8. Bumper / Back
Paint / Scratch / Line -



9. Tailgate
Paint / Scratch / Line -

Mechanical Condition

Control Lights

Display Defect	✓	Service Light	✓
ABS Warning Light	✓	ESP Fault/Traction Control Malfunction Light	✓
Diesel Particulate Filter Light	✓	Airbag Warning Light	✓
Oil Pressure Warning Light	✓	Brake Warning Light	✓
Power Steering Warning Light	✓	Alternator / Battery	✓
No Dashboard Lights	✓		

Equipments Test

Central Locking	✓	Main & Spare Keys Functioning	✓
Electric Windows	✓	Navigation System	✓
Audio Equipment	✓	Parking Sensors / Cameras Functioning	✓
AC / Heating System	✓	Other Equipments	✓

Engine

Engine Status / EML	✓	Engine Leak Visible	✓
Engine Starts	✓		

Gearbox

Gear Box	✓
----------	---

Levels

Coolant Fluid	✓	Brakes Fluid	✓
---------------	---	--------------	---

Test Drive Inspection

Steering Wheel			
Steering Noise / Anomaly		✔	
Engine			
Engine Noise	✔	The Gears Scratch / Skip / Abnormal Operation	✔
Fume Quantity	✔	Power Loss	✔
Brake			
Brake System Anomaly		✔	
General			
Test Driven Status		Not Performed	
✔ No troubles detected, good condition or correct tests, according to vehicle age and mileage			
❗ Damages or malfunction detected that requires repairs by the buyer			
NA Not applicable			
☐ Not tested			

Disclaimer

Please also note the "UserGuide condition report", which shows the scope of the vehicle description.

[User Guide](#)