



BMW 3er 320d Touring Aut.

VIN NO WBA11DZ010FL64658
Registration Number 010FL64658



MOT Date



Last Service

2025-06-06

Number of Owners



Last Service Mileage

159583

Number of Keys



First Registration Date

2021-07-23

Odometer Reading



Country First Registered



168472 km

Inspection Report Summary

Customer	BCA Online	Report Number	P20250905111948
Inspection Date / Place	2025-09-05 / BCA Oberndorf	Cosmetic Grade	2

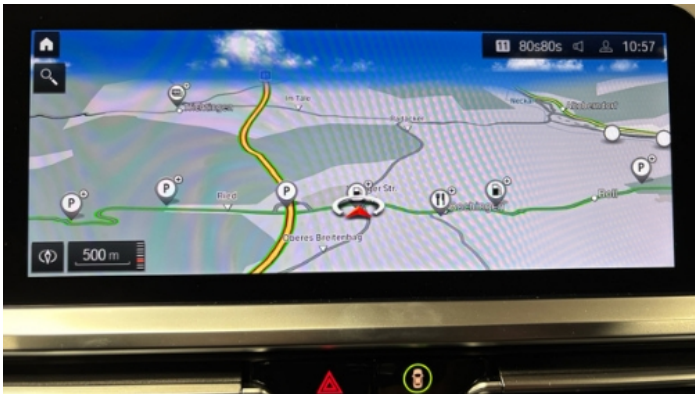
Vehicle Summary

Vehicle Condition	Runner	VAT Type	Qualifying
Fuel Type	Diesel	Road Worthy	Yes
Colour	Grey	Engine Size (cc)	1995
Engine Size	2.0	No of Doors	5
Body Type	Stationwagon / Estate	Drive Train	Rear
Seat Colour		No of Seats	5
Seat Covering Name	Schwarz	Seat Covering	Cloth/Leather
Charging Cables		WLTP CO2 Emissions	
Gearbox Type	Automatic		

Vehicle History & Documents

Service Book Available	Present	Next Service Mileage	km
Previous Usage		Imported	No
Manufacturer Warrenty			







Equipment

Tinted Glass	Trafficsignrecognition	USB Socket	Alloys wheels
AndroidAuto	AppleCarPlay	Cruise control	Digital Radio
Front fog lamps	Heated wing mirrors	Remote central locking	Satellite navigation
Stability control	Electrically folding wing mirrors	Emergencybrakeassist	Laneassist
LED Headlamps	Rear parking sensors	Tow ball	Trip Computer
Airbag Status	Ambientlighting	Anti-lock braking	Bluetooth telephone interface
Diesel particulate filter	Digitaldashboard	Front parking sensors	Remote adjusting wing mirrors
Roof rails	Split folding rear seats	Central locking	Electrictailgate
Keyless Entry	Leather steering wheel	Radio	Rear sunblind

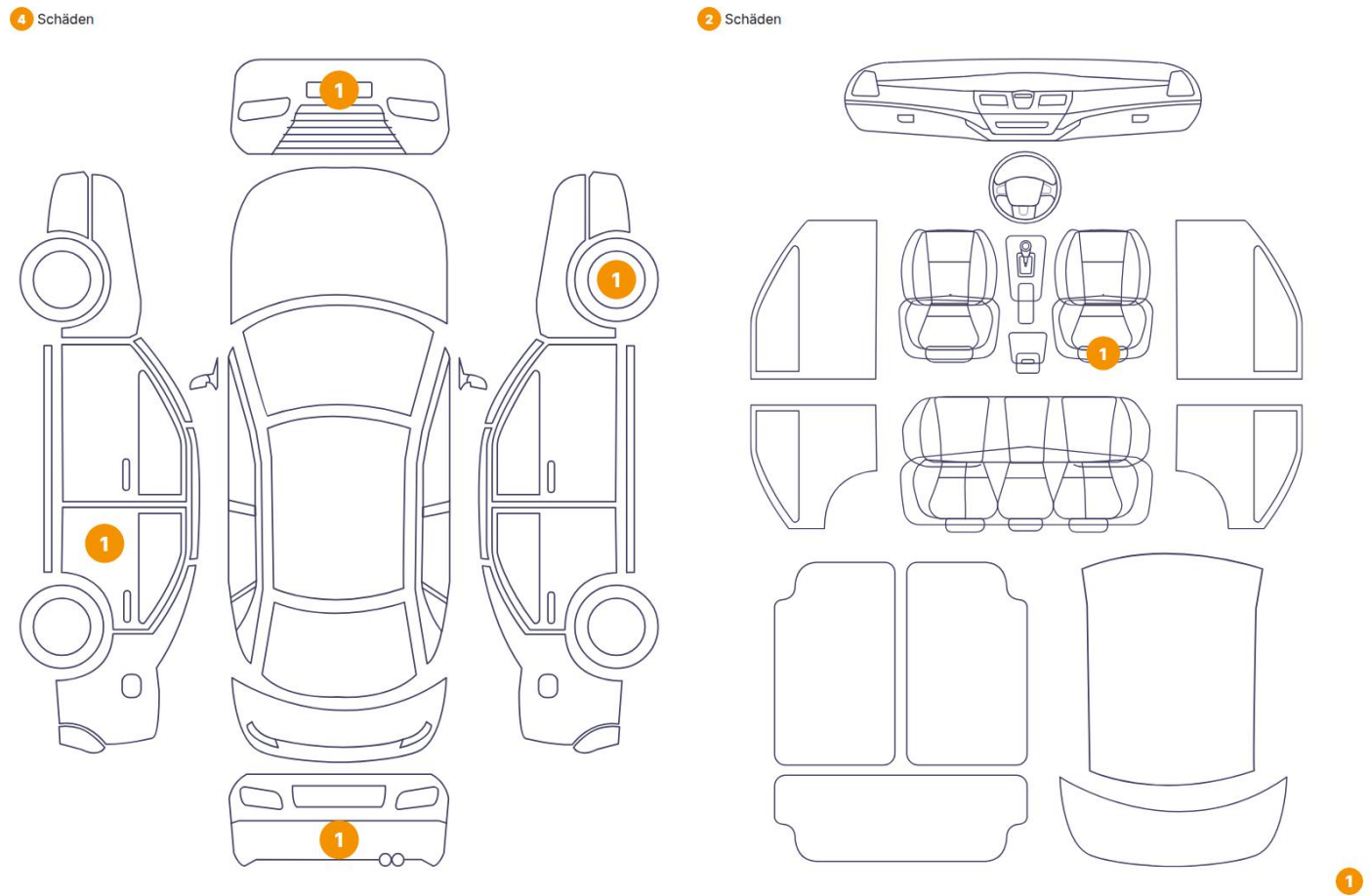
Equipment Details

Tow Ball Type	Electronic	Air Conditioning	Three Zone Climate Control
Alloy Wheel Size	19	Extra Wheel / Tyre Set	Winter Tyres - Alloy
Seat Heating	Front		

Wheels & Tyres

Right Front Tyre Depth	6	Left Front Tyre Depth	6
Right Rear Tyre Depth	5	Left Rear Tyre Depth	5
Extra Wheel - 1 Tyre Depth	5	Extra Wheel - 2 Tyre Depth	5
Extra Wheel - 3 Tyre Depth	6	Extra Wheel - 4 Tyre Depth	6

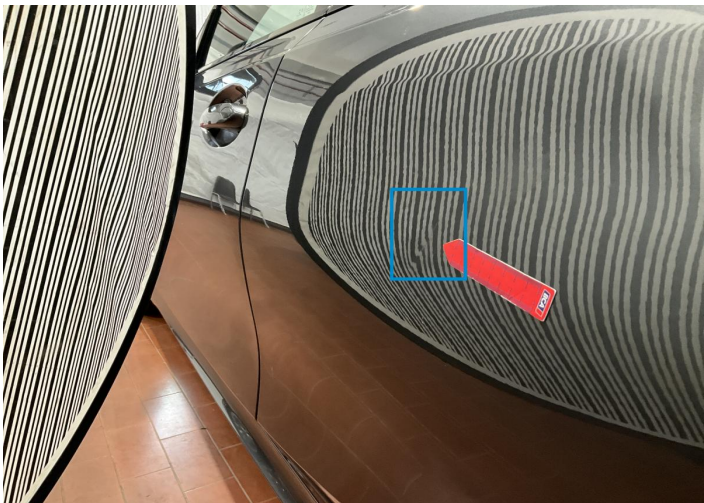
Cosmetic Damage



Component		Damage	Comments
1	Bumper / Front	Bodywork / Dent / Dent	
2	Door / Back Left	Bodywork / Dent / Dent	
3	Other	Interior / Broken	
4	Bumper / Back	Paint / Scratch / Scuff	
5	Seat / Front Right	Interior / Ripped	
6	Rim / Front Right	Out of Bodywork / Scratch	



1. Bumper / Front
Bodywork / Dent / Dent -



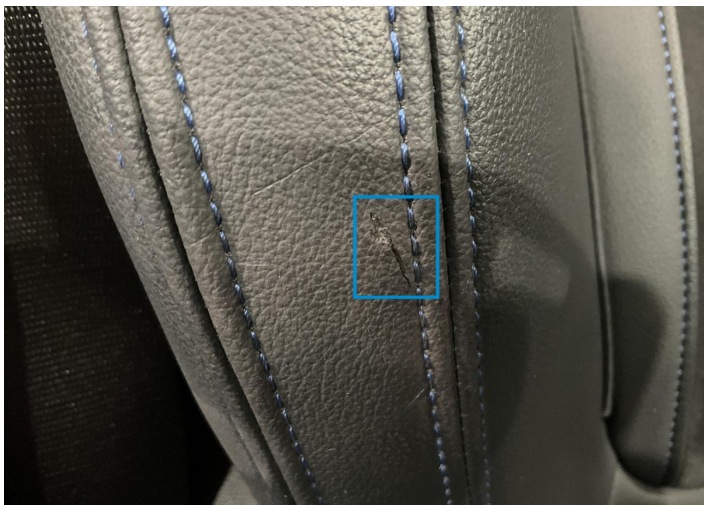
2. Door / Back Left
Bodywork / Dent / Dent -



3.
Interior / Broken -



4. Bumper / Back
Paint / Scratch / Scuff -



5. Seat / Front Right
Interior / Ripped -



6. Rim / Front Right
Out of Bodywork / Scratch -

Mechanical Condition

Control Lights

Display Defect	✓	Service Light	✓
ABS Warning Light	✓	ESP Fault/Traction Control Malfunction Light	✓
Diesel Particulate Filter Light	✓	Airbag Warning Light	✓
Oil Pressure Warning Light	✓	Brake Warning Light	✓
Power Steering Warning Light	✓	Alternator / Battery	✓
No Dashboard Lights	✓	Tire Pressure Monitoring System	✓

Equipments Test

Central Locking	✓	Main & Spare Keys Functioning	✓
Electric Windows	✓	Navigation System	✓
Audio Equipment	✓	Parking Sensors / Cameras Functioning	✓
AC / Heating System	✓	Other Equipments	✓

Engine

Engine Status / EML	✓	Engine Leak Visible	✓
Engine Starts	✓		

Gearbox

Gear Box	✓
----------	---

Levels

Brakes Fluid	✓	Coolant Fluid	✓
--------------	---	---------------	---

Test Drive Inspection

Steering Wheel			
Steering Noise / Anomaly		✔	
Engine			
Engine Noise	✔	The Gears Scratch / Skip / Abnormal Operation	✔
Fume Quantity	✔	Power Loss	✔
Brake			
Brake System Anomaly		✔	
General			
Test Driven Status		Not Performed	
✔ No troubles detected, good condition or correct tests, according to vehicle age and mileage			
❗ Damages or malfunction detected that requires repairs by the buyer			
NA Not applicable			
= Not tested			

Disclaimer

Please also note the "UserGuide condition report", which shows the scope of the vehicle description.

[User Guide](#)