



Expertise

Protocol number: 41603896  
Order No. / Reference: 25191197  
Inspection date: 15 Sept 2025

Manufacturer: Audi

Model: A3 45 TFSIe Sportback S tronic S line

VIN: WAUZZZGY9MA128375



Vehicle details	
Manufacturer / Type / Model / Equipment	
Audi A3 45 TFSIe Sportback S tronic S line	
Vehicle Identification number	WAUZZZGY9MA128375
Mileage (Read)	160,568 km
First registration	5 Jul 2021
Number of holders	1
Next periodical technical inspection	06/2026
(Report not on hand)	
Power / Engine displacement	110 kw / 1,395 ccm
Fuel type / Cylinder	Hybr.B/E ext. edition / 4
Gearbox / Number of gears	Automatic / 6
Type of drive	Front drive
Type of vehicle	Saloon car
Colour / colour code	Ibisweiß
Doors / Seats	5 / 5
Upholstery type	Cloth / leather combination
Colour of upholstery	Black



## Vehicle details

<b>Maintenance booklet / proof</b>	digital proof / complete	<b>Next maintenance in</b>	18,100 km
<b>Last maintenance on / at</b>	07/2025 at 155,936 km		
<b>Key is / should be</b>	2 / 2	<b>FZG documents</b>	ZB#2 (B) was available (copy), ZB#1 (S) was not available
		<b>Letter No.</b>	GC348260
<b>Previous damage / Accident</b>	Detectable	<b>Repainting</b>	Detectable
<b>Inspection conditions</b>	sufficient	<b>Lifting equipment / pit</b>	yes
<b>Test drive</b>	Not performed	<b>Engine function test</b>	Performed
<b>Manufacturer key number/ type code number</b>	0588 / BWZ 00018		
<b>Emission standard</b>	EURO6;WLTP;AP;PI/CI; M, N1 I	<b>Fine dust sticker</b>	
<b>Permitted total weight</b>	2,075 kg	<b>Empty weight</b>	

## Tyres

### Mounted tyres

#	Tyre size	Type of tyre	Manufacturer	Tread depth
1)	225/40 R18 92Y	Summer tyres on Light alloy	Goodyear	5mm / 5mm
2)	225/40 R18 92Y	Summer tyres on Light alloy	Goodyear	5mm / 5mm

### Additional tyres

#	Tyre size	Type of tyre	Manufacturer	Tread depth
1)	225/40 R18 92V	Winter tyres on Light alloy	Pirelli	5mm / 5mm
2)	225/40 R18 92V	Winter tyres on Light alloy	Pirelli	5mm / 5mm

### Replacement

Typ	Tyre size	Type of tyre	Manufacturer	Tread depth
	Tirefit	Expiration date 04/2025		

**Legend:** Tread depth information for tires on the left is in the first place, for tires on the right is in the second place on the axle in the direction of travel



## Equipment

### Standard equipment

- Airbag for driver and front passenger
- Anti-lock braking system (ABS)
- Traction control ASR
- Audi drive select
- Audi pre sense front
- Brake light, third
- Headlining in steel grey fabric
- tachometer
- e-tron charging system compact
- Door sills with aluminum inserts at the front, illuminated, with S lettering
- Electronic Stabilization Control (ESC)
- Chassis: Standard chassis
- Radio key (without Safe-Lock)
- Removable luggage compartment cover
- Transmission: S tronic 6-speed
- Hybrid drive system PHEV
- Child safety lock electrically operated
- 2-zone comfort automatic climate control
- Comfort key without Safelock
- Front headrests
- AC Type 2 charging socket
- Charging cable: Mode 3 charging cable for public charging 11 kW
- Light and rain sensor
- Illuminated makeup mirror
- Gasoline particulate filter
- Radio: MMI Radio plus
- Tire repair kit
- Power steering, electromechanical
- Seat covers in fabric "Dynamik"
- Seats: Sports seats front
- Parking air conditioning
- 12 volt socket in the rear
- Daytime running light
- Glazing: Heat-insulating glazing tinted green
- Airbag: Front side airbags, with head airbag and front interaction airbag
- Audi connect emergency call & service with Audi connect Remote & Control
- Exterior mirror housing in black
- Brake calipers, painted red
- Digital instrument cluster - fully digital instrument cluster in 10.25 inches
- Rear parking aid
- Electromechanical parking brake
- Electronic differential lock (EDS)
- EV button
- Electric windows front and rear
- Floor mats front and rear
- Cruise control system
- Rear window wiper
- Interior lighting
- Child seat attachment i-Size and Top Tether for the outer rear seats
- Headrests (3) rear
- Paint finish: Uni
- Charging cable: Industrial plug CEE 16 A, 400 V, long and straight
- Steering wheel: Leather steering wheel in 3-spoke design with multifunction and shift paddles
- Non-smoking version
- Package Optics Package Black
- Tire pressure monitoring display
- Headlight
- 3-point automatic seat belts
- Seats: Folding rear seat backrest
- Lane Departure Warning
- Start-stop system
- 12V socket
- Glazing: Privacy glazing (tinted windows)
- Electronic immobilizer

### Extra equipment

- Adaptive Cruise Control (S tronic) (Uses a radar sensor to detect vehicles ahead within the system limits and maintains the speed or distance as constant as possible within the control range. The speed range is between 0 and 210 km/h. The control range is between 30 and 210 km/h. In stop-and-go traffic, vehicles can brake to a standstill and, under certain conditions, move off automatically again. The distance can be set to five levels via Audi drive select or the ACC menu.)
- Audi pre sense basic (initiates preventive protective measures for the occupants within the system's limits by networking and synchronizing various vehicle systems. In unstable driving conditions, the front seat belts are electrically tensioned. The windows close as needed. The hazard warning lights are activated to warn following traffic.)



- Business package (USB ports with charging function in the rear - Audi connect navigation & infotainment plus - Audi phone box - Audi virtual cockpit plus - Audi smartphone interface - MMI navigation plus with MMI touch - cruise control)
- Camera-based traffic sign recognition (Supports the driver by displaying traffic signs detected within the system's limits, such as speed limits, no-overtaking zones, and temporary speed limits that are within the detection range of the front camera. The traffic sign recognition is displayed automatically on the digital instrument cluster display or in the optional Audi virtual cockpit.)
- Hold assist (holds the vehicle indefinitely after stopping on normal uphill and downhill gradients.)
- Interior mirror, automatically dimming, frameless
- LED headlights and LED taillights with dynamic rear indicators (daytime running lights, dipped beam, high beam, position light, indicator, cornering light, all-weather light (to reduce glare in poor visibility conditions), motorway light, static cornering light, maneuvering light (illumination of the maneuvering area at the front and sides when reversing), automatic dynamic headlight range control, intersection light (in conjunction with MMI Nav. plus), dynamic rear indicators, brake lights, tail lights, rear license plate lights, reversing lights)
- Parking assistant with parking aid plus (Using ultrasonic sensors, the system searches for suitable parallel or parallel parking spaces. The parking path (forward and backward) is calculated for parallel parking spaces, and the parking path (in and out) is calculated for parallel parking spaces. The driver must accelerate, shift gears, and brake, as well as monitor the parking maneuver. The system handles the steering. The surroundings display warns of obstacles around the vehicle, depending on the path, within the system limits. Parking maneuvers in multiple moves are supported.)
- Roof rails black
- Seat upholstery in Puls fabric/mono.pur 550 synthetic leather combination with S-embossing (seat center panel of the front and both outer rear seats in Puls fabric - seat side bolsters, headrests, middle rear seat, and front center armrest (if ordered) in mono.pur 550 synthetic leather - with rock gray contrast stitching and S-embossing on the front seat backrests)
- Wheel: Light alloy wheels - 18 inches - 5-Y-spoke, graphite grey, high-sheen (8.0 J x 18, tires 225/40 R 18)
- Winter wheels LM 5-arm Dyn.225/40R18
- Convenience opening of the luggage compartment lid (The luggage compartment lid opens electrically after unlocking and can be closed again at the touch of a button. Closing the luggage compartment lid is just as easy and convenient as opening it using the button on the inside of the luggage compartment lid, the vehicle key button, or the button in the driver's door. The closing aid makes manual closing easier when necessary. In low ceilings, the opening angle of the luggage compartment lid can be limited.)
- Exterior mirrors electrically adjustable, heated and foldable, with automatic dimming on both sides (with integrated LED indicators and automatic curb detection for the passenger side mirror - mirror glass aspherical on the left, convex on the right - including heated windscreen washer nozzles)
- Front seat heating (heats the seat and backrest center panel (standard fabric seats), otherwise the seat and backrest center panel and seat side bolsters - individually adjustable in 3 stages for the driver and front passenger side via the direct selection button on the climate control panel)
- Radio accessories: Audi sound system (10 speakers, including center speaker and subwoofer, total power 180 watts, 6-channel amplifier.)
- S line (S tronic) interior package (front sports seats with manual adjustment of seat height, fore/aft position, seat angle, backrest angle, and belt height, as well as headrests in Puls fabric/mono.pur 550-K synthetic leather. 3-spoke leather steering wheel with multifunction plus and shift paddles including steering wheel grips in perfect leather. Armrests in the front and rear doors in synthetic leather. Decorative inlay in aluminum spectrum dark. Door sills with aluminum inserts (front, illuminated, with S lettering). Roof lining in black fabric. Center armrest (front), floor mats, pedals and footrest in stainless steel.)
- Seats: 4-way lumbar support (electrically adjustable, horizontally and vertically)
- Seats: Folding rear seat backrest (three-piece), with center armrest (split 40 : 20 : 40 or fully foldable; with center armrest and cup holders)
- Steering wheel: Sport contour leather steering wheel in 3-seater design, flattened at the bottom, with multifunction plus and shift paddles. (The height and reach of the steering wheel are manually adjustable. For convenient operation of the extensive standard and optional infotainment features, the steering wheel is equipped with twelve multifunction buttons. Shift paddles allow manual gear changes.)

## Retrofitted equipment

- retrofitted tow bar including installation



## Brief expert findings

Documents submitted	At the time of the inspection, the registration certificate Part 2 (letter) was available, but the registration certificate Part 1 (certificate) was not. (Copy)
VIN comparison	The vehicle identification number (VIN) was read from the vehicle and its conformity with the submitted documents was verified during the inspection by the undersigned.
Inspection	The inspection conditions were sufficient for the assessment of the vehicle. Lifting equipment and a pit were available for examining the vehicle.
Test drive	No test drive/maneuvering was carried out during the inspection of the vehicle.
Engine function test	An engine test run was performed.

## Value reducing factors

No.	Component group	Description
1	Equipment	Tirefit filler - Expired - Replace
2	Door - front left side	Door handle - outside - Scratch(es) - Smart repair
3	Door - rear right side	Door - Scratch(es) - Smart repair
4	Seat - front	Backrest cover - left side - Scratch(es) - Smart repair
5	Front bumper	Front bumper - Scratch(es) - Smart repair
6	Wheel / tyres	Alloy rim - rear right side - Scratch(es) - Loss in value
7	Wheel / tyres	Alloy rim - front left side - Scratch(es) - Loss in value
8	Wheel / tyres	Alloy rim - front right side - Scratch(es) - Loss in value
9	Rear bumper	Rear bumper - Scratch(es) - Paint
10	2nd wheel set	Alloy rim set - complete - Scratch(es) - Loss in value
11	Side panel - rear left side	Side panel - Scratch(es) - Paint
12	Side panel - rear right side	Side panel - Scratch(es) - Paint
13	Bonnet	Bonnet - Dent / paintcoat damage - Repair and paint
14	Vehicle glazing	Windscreen - Broken / torn - Replace

## Previous damages

No.	Previous damage	Extent of damage (Net)
1	Front, Provided by user / customer, from 19 Apr 2025	1.936,64 €
2	Side right, Provided by user / customer, from 12 Oct 2023	2.750,00 €
3	Side - left, Provided by user / customer, from 1 Mar 2025	3.583,50 €

## Repainting

No.	Repainting
1	Mudguard - left side, Door - front left side, Professionally carried out, Invoice of repair done Non-existent

## Paint coat thickness measurement

Mudguard - left side	179 µm	Door - front left side	196 µm
----------------------	--------	------------------------	--------



## Order/Scope of order

The order was placed to prepare a sales report for the vehicle described. This includes the following:

- Description of core relevant information about the vehicle
- Documentation of equipment features  
(*Delivery by third-party service providers*)
- Documentation of damage, defects, missing parts
- Documentation of previous damage, unrepaired previous damage, repainting
- a brief visual or functional inspection of the equipment details if possible.  
(*Functional tests of driver assistance systems are not included in the scope of services!*)
- a photo documentation of the vehicle

## Basis for the order

This product is based on the Alphabet Fuhrpark GmbH guidelines for vehicle returns and valuations. The expert makes the explicit findings in each individual case objectively within the framework of the specified standards based on his or her own expertise.

The vehicle inspection takes place in a disassembled state.

Damage or defects that can only be detected during disassembly/diagnosis work or through advanced knowledge remain within the scope of the prognosis risk. An extended risk exists for concealed defects caused by fraudulent deception and not identifiable by the expert.

Damage or defects resulting from normal use or wear and tear of the vehicle will be accepted according to the applicable standard.

There was no explicit identification or monetary consideration of the expected features within the product.

Features which in their nature and severity slightly exceed normal use but do not constitute unacceptable damage will be documented and identified under signs of use if necessary.

Damage or defects which, according to the underlying standard, can no longer be attributed to normal use or wear and tear are listed in the product under "Depreciating Factors".

Depending on the product specification, a monetary ID can be provided. If this takes place, the costs can be 100% d or pro rata depending on the vehicle's age and mileage.

## Previous damages

According to available information previous damages were repaired at the vehicle. Traces of repairs, which allow conclusions about the area of repair, were not recognizable during the inspection.

## Comments

Wartungshistorie gemäß Auftraggeber Informationen.





Figure 1: Diagonal front (left)



Figure 2: Diagonal front (right)



Figure 3: Diagonal rear (left)



Figure 4: Diagonal rear (right)



Figure 5: Interior - front



Figure 6: Interior - rear





Figure 7: Instrument cluster



Figure 8: Instrument panel



Figure 9: Interior 360° view



Figure 10: Cargo area

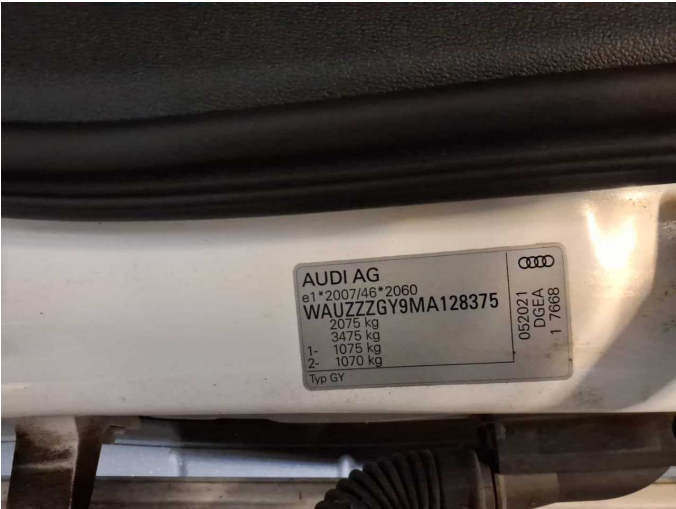


Figure 11: VIN



Figure 12: Mounted tyres



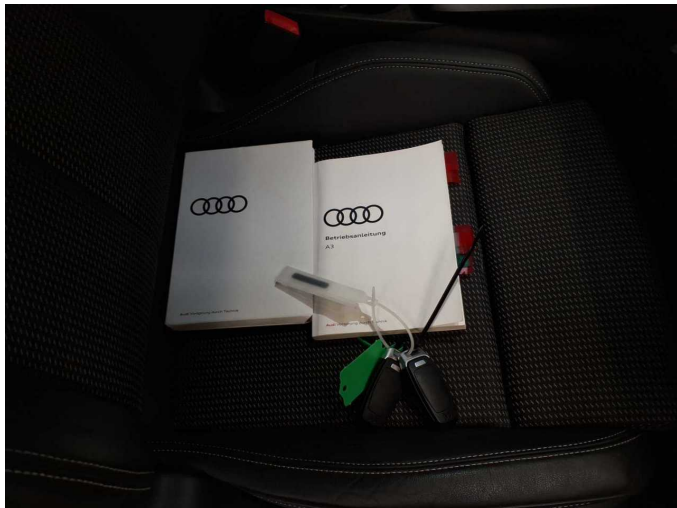


Figure 13: Documents

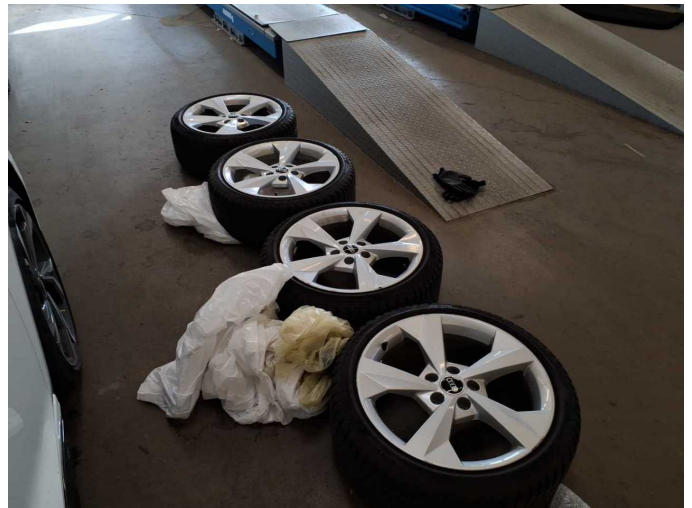


Figure 14: Additional tyres



Figure 15: Navigation

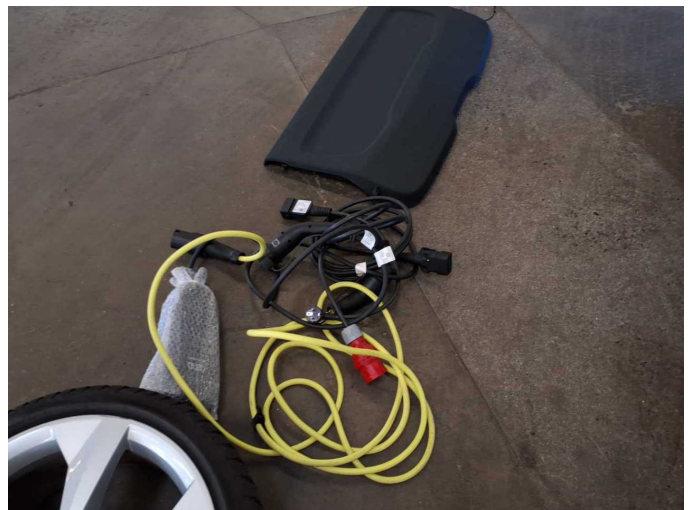


Figure 16: Misc.



Figure 17: Misc.



Figure 18: Misc.





Figure 19: Misc.

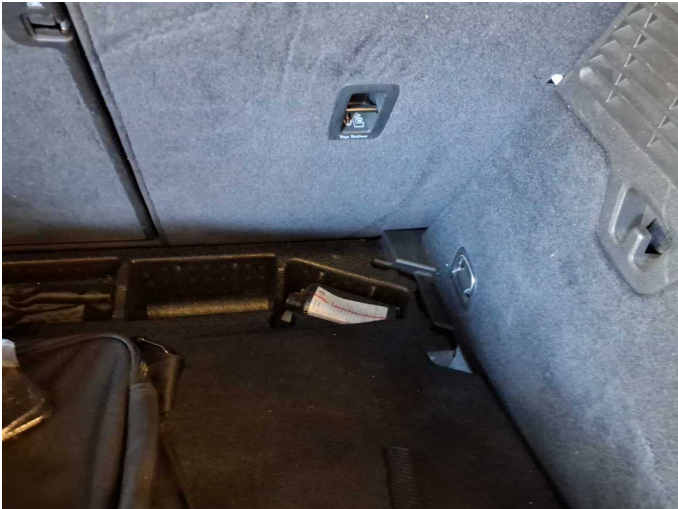


Figure 20: Misc.

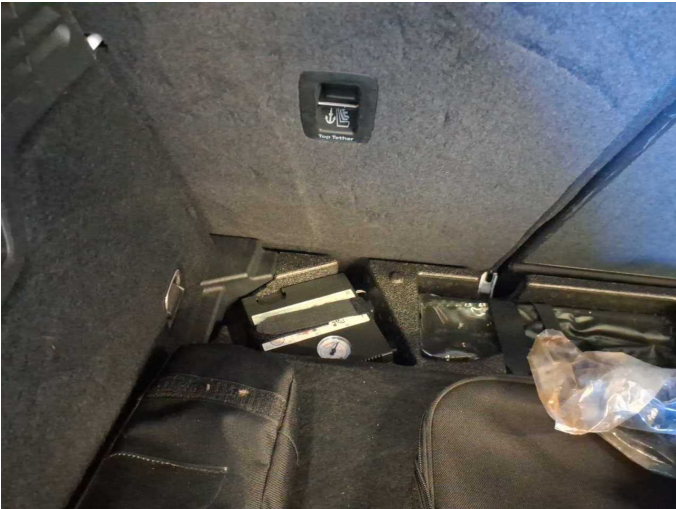


Figure 21: Misc.



Figure 22: Misc.

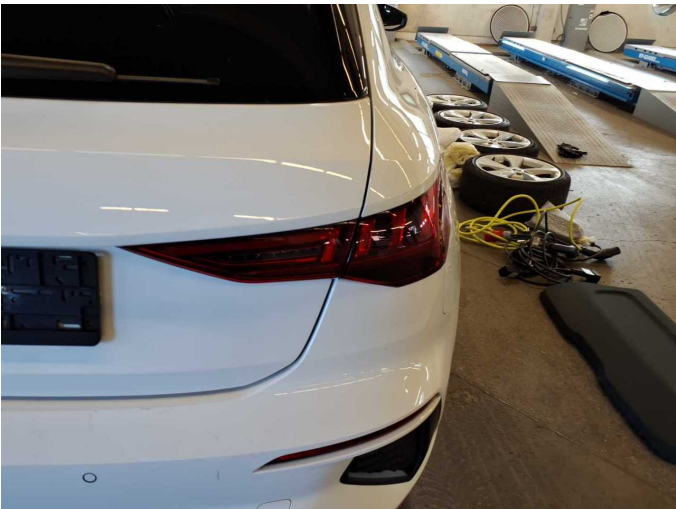


Figure 23: Misc.



Figure 24: Misc.



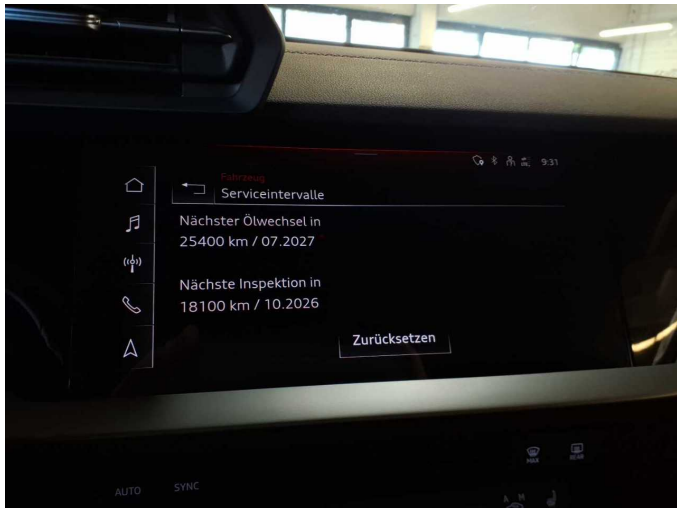


Figure 25: Misc.



Figure 26: Misc.



Figure 27: Misc.

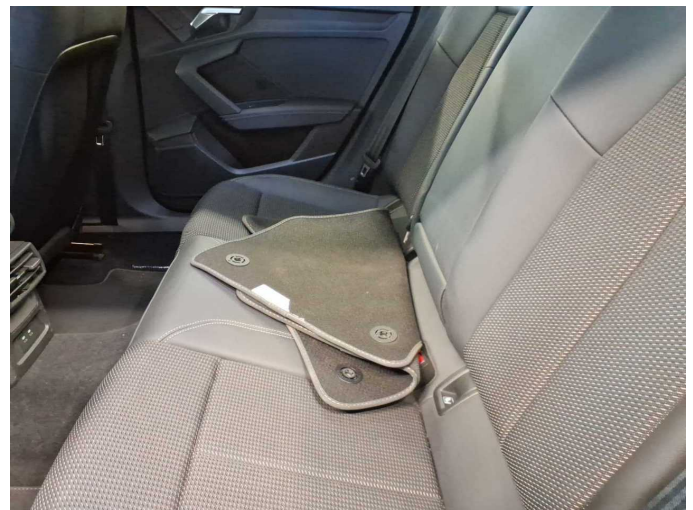


Figure 28: Misc.



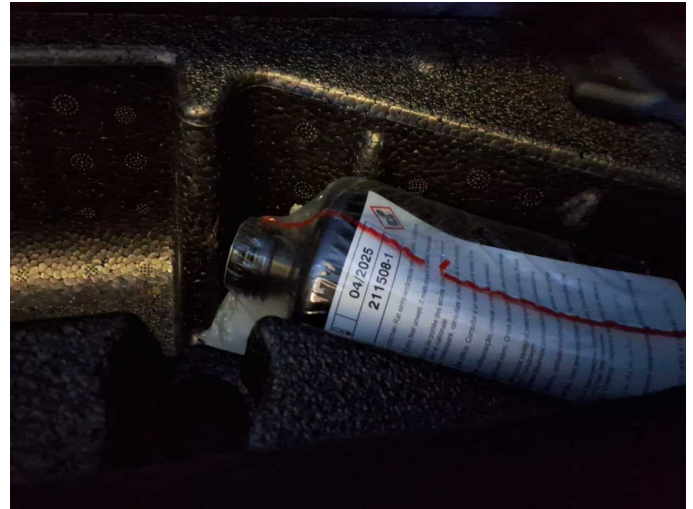
Figure 29: Misc.



Figure 30: Misc.



**Figure 31:** Misc.



**Damage 1:** Equipment: Tirefit filler - Expired - Replace



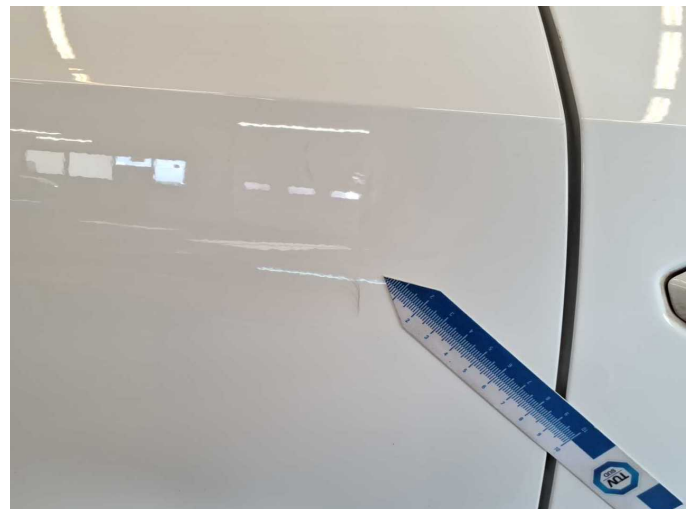
**Damage 2:** Door - front left side: Door handle - outside - Scratch(es) - Smart repair



**Damage 2:** Door - front left side: Door handle - outside - Scratch(es) - Smart repair



**Damage 3:** Door - rear right side: Door - Scratch(es) - Smart repair



**Damage 3:** Door - rear right side: Door - Scratch(es) - Smart repair





**Damage 4:** Seat - front: Backrest cover - left side - Scratch(es) - Smart repair



**Damage 4:** Seat - front: Backrest cover - left side - Scratch(es) - Smart repair



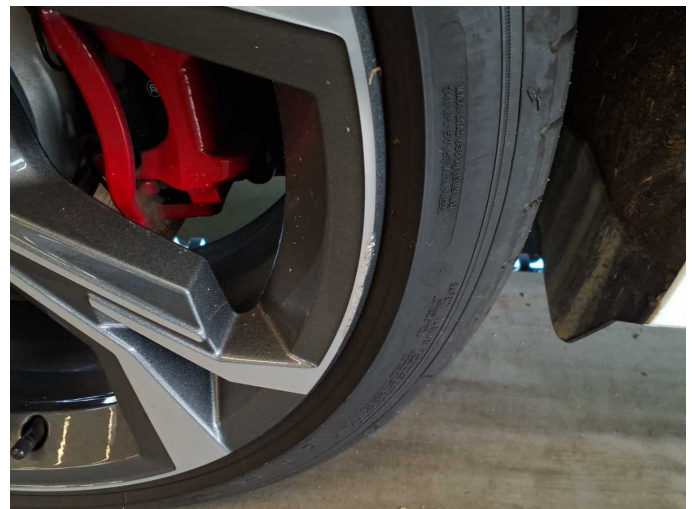
**Damage 5:** Front bumper: Front bumper - Scratch(es) - Smart repair



**Damage 5:** Front bumper: Front bumper - Scratch(es) - Smart repair



**Damage 6:** Wheel / tyres: Alloy rim - rear right side - Scratch(es) - Loss in value



**Damage 6:** Wheel / tyres: Alloy rim - rear right side - Scratch(es) - Loss in value

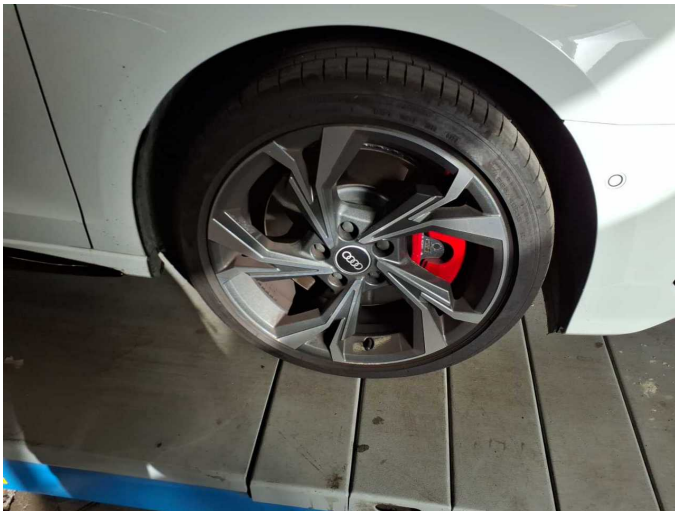




**Damage 7:** Wheel / tyres: Alloy rim - front left side - Scratch(es) - Loss in value



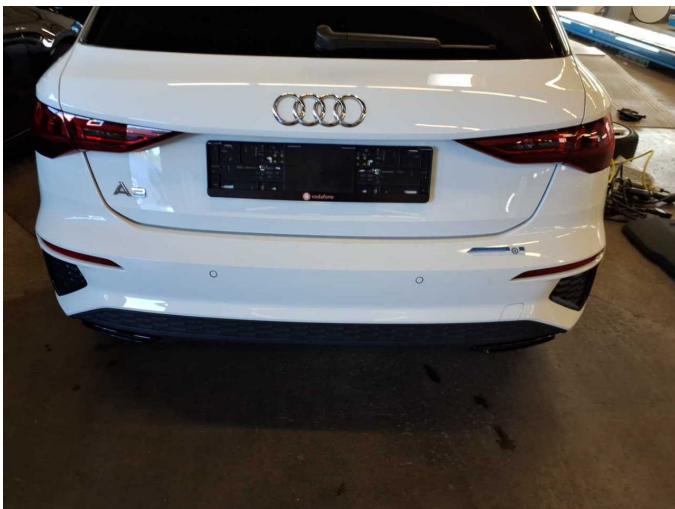
**Damage 7:** Wheel / tyres: Alloy rim - front left side - Scratch(es) - Loss in value



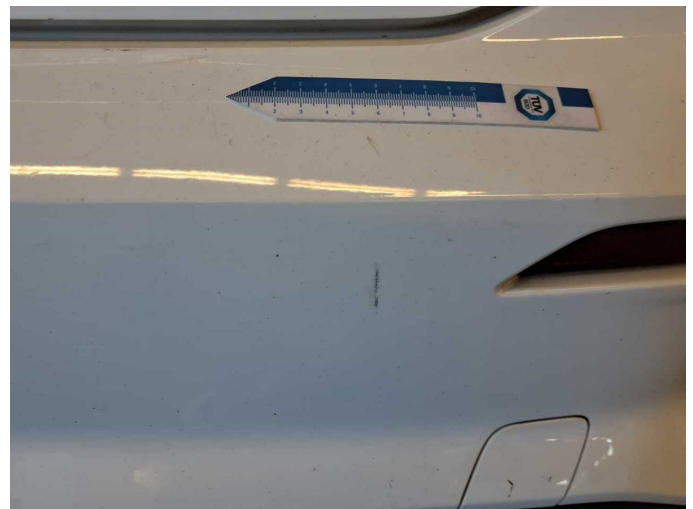
**Damage 8:** Wheel / tyres: Alloy rim - front right side - Scratch(es) - Loss in value



**Damage 8:** Wheel / tyres: Alloy rim - front right side - Scratch(es) - Loss in value



**Damage 9:** Rear bumper: Rear bumper - Scratch(es) - Paint



**Damage 9:** Rear bumper: Rear bumper - Scratch(es) - Paint



**Damage 9:** Rear bumper: Rear bumper - Scratch(es) - Paint



**Damage 9:** Rear bumper: Rear bumper - Scratch(es) - Paint



**Damage 10:** 2nd wheel set: Alloy rim set - complete - Scratch(es) - Loss in value



**Damage 10:** 2nd wheel set: Alloy rim set - complete - Scratch(es) - Loss in value



**Damage 10:** 2nd wheel set: Alloy rim set - complete - Scratch(es) - Loss in value



**Damage 10:** 2nd wheel set: Alloy rim set - complete - Scratch(es) - Loss in value





**Damage 10:** 2nd wheel set: Alloy rim set - complete - Scratch(es) - Loss in value



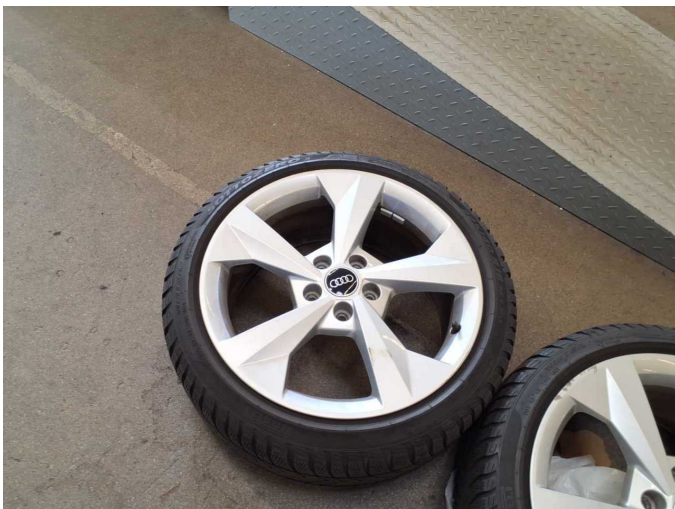
**Damage 10:** 2nd wheel set: Alloy rim set - complete - Scratch(es) - Loss in value



**Damage 10:** 2nd wheel set: Alloy rim set - complete - Scratch(es) - Loss in value



**Damage 10:** 2nd wheel set: Alloy rim set - complete - Scratch(es) - Loss in value



**Damage 10:** 2nd wheel set: Alloy rim set - complete - Scratch(es) - Loss in value



**Damage 10:** 2nd wheel set: Alloy rim set - complete - Scratch(es) - Loss in value





**Damage 11:** Side panel - rear left side: Side panel - Scratch(es) - Paint



**Damage 11:** Side panel - rear left side: Side panel - Scratch(es) - Paint



**Damage 12:** Side panel - rear right side: Side panel - Scratch(es) - Paint



**Damage 12:** Side panel - rear right side: Side panel - Scratch(es) - Paint



**Damage 12:** Side panel - rear right side: Side panel - Scratch(es) - Paint



**Damage 12:** Side panel - rear right side: Side panel - Scratch(es) - Paint



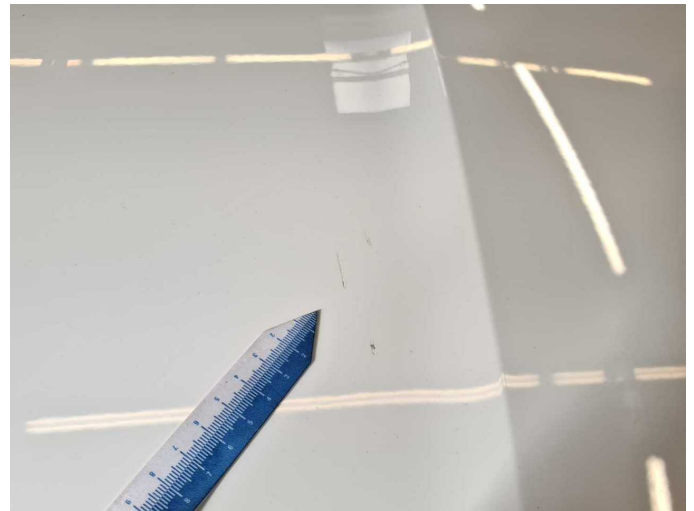
**Damage 13:** Bonnet: Bonnet - Dent / paintcoat damage - Repair and paint



**Damage 13:** Bonnet: Bonnet - Dent / paintcoat damage - Repair and paint



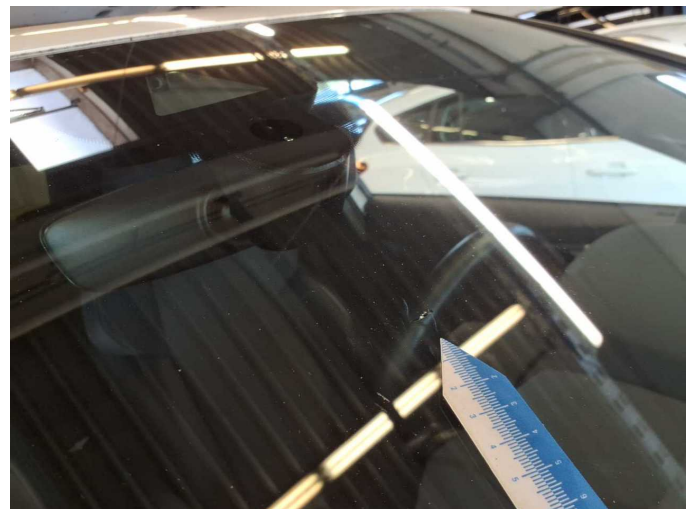
**Damage 13:** Bonnet: Bonnet - Dent / paintcoat damage - Repair and paint



**Damage 13:** Bonnet: Bonnet - Dent / paintcoat damage - Repair and paint



**Damage 14:** Vehicle glazing: Windscreen - Broken / torn - Replace



**Damage 14:** Vehicle glazing: Windscreen - Broken / torn - Replace



**Repainting 1:** Mudguard - left side, Door - front left side



**Repainting 1:** Mudguard - left side, Door - front left side



**Repainting 1:** Mudguard - left side, Door - front left side



**Repainting 1:** Mudguard - left side, Door - front left side





# Wartungshistorie

(gemäß Auftraggeber Informationen)

Fahrgestellnummer: WAUZZZGY9MA128375  
Hersteller / Modell: AUDI AUDI A3 45 TFSIe Sportback S tronic S line

Datum	KM-Stand	Beschreibung
21.07.2025	155.936	Klimaanlage inst.; Motoröl b. Wartung; Ölfilter ern; Ölwechsel; Systemtest/ Eigendiagnose; Wartung Sonstiges
04.07.2025	155.261	Bremse Sonstiges; Bremsflüssigkeit; Bremsflüssigkeit ern; Bremsklötze hinten; Bremsklötze vorne; Bremsscheiben + Klötze h; Bremsscheiben + Klötze v; Bremsscheiben hinten; Bremsscheiben vorne; Regelwartungsdienst; Wartung Sonstiges
13.03.2025	140.352	Motoröl b. Wartung; Ölfilter ern; Ölwechsel; Wartung Sonstiges
07.11.2024	125.457	Getriebeöl ern/prüfen; Motoröl b. Wartung; Ölfilter ern; Regelwartungsdienst; Wartung Sonstiges; Zündkerzen ern
25.06.2024	104.565	HU + AU
31.05.2024	102.603	Motoröl b. Wartung; Ölfilter ern; Ölwechsel; Wartung Sonstiges
28.02.2024	88.624	Luftfiltereinsatz ern; Regelwartungsdienst; Wartung Sonstiges
15.01.2024	85.913	Bremse Sonstiges; Bremsklötze hinten; Bremsscheiben hinten; Motoröl b. Wartung; Ölfilter ern; Ölwechsel; Wartung Sonstiges
15.08.2023	70.488	Bremse Sonstiges; Bremsklötze vorne; Bremsscheiben vorne; Motoröl b. Wartung; Ölfilter ern; Ölwechsel; Wartung Sonstiges
06.06.2023	61.057	Bremsflüssigkeit; Bremsflüssigkeit ern; Getriebeöl ern/prüfen; Regelwartungsdienst; Wartung Sonstiges; Zündkerzen ern
18.04.2023	54.566	Motoröl b. Wartung; Ölfilter ern; Ölwechsel; Wartung Sonstiges
10.01.2023	42.552	Motoröl b. Wartung; Ölfilter ern; Ölwechsel; Wartung Sonstiges
24.08.2022	28.747	Motoröl b. Wartung; Ölfilter ern; Regelwartungsdienst; Wartung Sonstiges
31.03.2022	17.465	Motoröl b. Wartung; Ölwechsel