



Expertise

Protocol number: 41689068  
Order No. / Reference: 25252548  
Inspection date: 22 Sept 2025

Manufacturer: Audi

Model: A3 35 TDI Sportback S tronic S line

VIN: WAUZZZGY8MA034469



Vehicle details	
Manufacturer / Type / Model / Equipment	
Audi A3 35 TDI Sportback S tronic S line	
Vehicle Identification number	WAUZZZGY8MA034469
Mileage (Read)	195,579 km
First registration	16 Nov 2020
Number of holders	1
Power / Engine displacement	110 kw / 1,968 ccm
Fuel type / Cylinder	Diesel / 4
Gearbox / Number of gears	Automatic / 7
Type of drive	Front drive
Type of vehicle	Saloon car
Colour / colour code	Ibisweiss (Y9C)
Doors / Seats	5 / 5
Upholstery type	Cloth
Colour of upholstery	Black-Anthracite



## Vehicle details

<b>Maintenance booklet / proof</b>	Non-existent	<b>Next maintenance in</b>	1,200 km
<b>Key is / should be</b>	2 / 2	<b>FZG documents</b>	ZB#2 (B) was available (copy), ZB#1 (S) was not available
		<b>Letter No.</b>	FX270435
<b>Previous damage / Accident</b>	Detectable	<b>Repainting</b>	None detectable
<b>Inspection conditions</b>	sufficient	<b>Lifting equipment / pit</b>	yes
<b>Test drive</b>	Not performed	<b>Engine function test</b>	Performed
<b>Manufacturer key number/ type code number</b>	0588 / BUG 00150		
<b>Emission standard</b>	EURO6;WLTP;DG;PI/CI; M, N1 I	<b>Fine dust sticker</b>	
<b>Permitted total weight</b>	1,965 kg	<b>Empty weight</b>	

## Tyres

### Mounted tyres

#	Tyre size	Type of tyre	Manufacturer	Tread depth
1)	225/45 R17 94W	Summer tyres on Light alloy	Goodyear	7mm / 7mm
2)	225/45 R17 94W	Summer tyres on Light alloy	Semperit	7mm / 7mm

### Additional tyres

#	Tyre size	Type of tyre	Manufacturer	Tread depth
1)	205/55 R16 91H	Winter tyres on Light alloy	Dunlop	4mm / 4mm
2)	205/55 R16 91H	Winter tyres on Light alloy	Dunlop	6mm / 6mm

### Replacement

Typ	Tyre size	Type of tyre	Manufacturer	Tread depth
Tirefit		Expiration date 09/2024		

**Legend:** Tread depth information for tires on the left is in the first place, for tires on the right is in the second place on the axle in the direction of travel



## Equipment

### Standard equipment

- Airbag for driver and front passenger
- Anti-lock braking system (ABS)
- Traction control ASR
- Audi pre sense front
- Exterior mirrors electrically adjustable and heated
- Brake light, third
- Roof edge spoiler S
- Digital instrument cluster - fully digital instrument cluster in 10.25 inches
- Door sills with aluminum inserts at the front, illuminated, with S lettering
- Electronic differential lock (EDS)
- Chassis: Sports suspension
- Radio key (without Safe-Lock)
- Removable luggage compartment cover
- Transmission: S tronic 7-speed
- Interior lighting
- Child seat attachment i-Size and Top Tether for the outer rear seats
- Front headrests
- Steering wheel: Leather steering wheel in 3-spoke design with multifunction and shift paddles
- Wheel: Light alloy wheels - 17 inches - 5-arm
- Tire pressure monitoring display
- Headlight
- 3-point automatic seat belts
- Seats: Standard seats in the front
- Lane Departure Warning
- 12 volt socket in the rear
- Daytime running light
- Electronic immobilizer
- Airbag: Front side airbags, with head airbag and front interaction airbag
- Audi connect emergency call & service with Audi connect Remote & Control
- Exterior mirror housings in body color
- Headlining in steel grey fabric
- Diesel particulate filter additive-free (DPF)
- tachometer
- Rear parking aid
- Electric auxiliary air heater
- Electromechanical parking brake
- Electronic Stabilization Control (ESC)
- Electric windows front and rear
- Floor mats front and rear
- Speed limitation system
- Rear window wiper
- Child safety lock electrically operated
- Manual air conditioning
- Headrests (3) rear
- Paint finish: Uni
- Light and rain sensor
- Non-smoking version
- Radio: MMI Radio plus
- Tire repair kit
- Power steering, electromechanical
- Seat covers in fabric
- Seats: Folding rear seat backrest
- Start-stop system
- 12V socket
- Glazing: Heat-insulating glazing tinted green

### Extra equipment

- Adaptive Cruise Control (supports the driver in controlling the set speed and distance to the vehicle in front. If a vehicle in front is detected using the radar sensor, the adaptive cruise control can decelerate or accelerate the vehicle. The control range for vehicles with S tronic is 0 to 210 km/h - stop-and-go traffic. The distance to the vehicle in front can be adjusted in 5 stages; the system's dynamics can be adjusted via Audi drive select or the menu.)
- Camera-based traffic sign recognition (Supports the driver by displaying traffic signs detected within the system's limits, such as speed limits, no-overtaking zones, and temporary speed limits that are within the detection range of the front camera. The traffic sign recognition is displayed automatically on the digital instrument cluster display or in the optional Audi virtual cockpit.)
- 2-zone comfort automatic climate control (electronically regulates air temperature, air flow, and distribution - separate temperature distribution for driver and passenger side - with sun position-dependent control - automatic air recirculation control - dust and odor-separating allergen filter - air vents in the rear center console - separate defroster button for faster defrosting of the windshield and side windows)
- Business package (USB ports with charging function in the rear - Audi connect navigation & infotainment plus - Audi phone box - Audi virtual cockpit plus - Audi smartphone interface - MMI navigation plus with MMI touch - cruise control)



- Convenience key without Safelock (The vehicle can be unlocked via wireless communication on all doors and the trunk lid. The convenience key simply needs to be carried with you and not actively operated. The vehicle can be relocked using the sensors on the door handles. The engine is started and stopped using the engine start/stop button.)
- Front seat heating (heats the seat and backrest center panel (standard fabric seats), otherwise the seat and backrest center panel and seat side bolsters - individually adjustable in 3 stages for the driver and front passenger side via the direct selection button on the climate control panel)
- Illuminated vanity mirror (LED lighting of the roof module front/rear including reading lights - LED lighting of the driver and front passenger vanity mirrors - glove box lighting (bulb) - LED trunk lighting on the right)
- Interior mirror, automatically dimming, frameless
- Panoramic glass roof (The glass element is opened and lowered electrically. The sun blinds are also conveniently operated. The panoramic glass roof can be operated from the outside using the remote key via the comfort opening and closing function. When opened, the panoramic glass roof improves the interior climate through efficient ventilation. An integrated wind deflector reduces wind noise.)
- Phone: LTE support for Audi phone box
- Radio accessories: Bang & Olufsen Premium Sound System with 3D sound (surround sound reproduction via 15 high-performance speakers including subwoofer; 16-channel amplifier with a total output of 680 watts. The new, virtual 3D sound effect creates an immersive sound experience. This is generated by four speakers in the instrument panel, two speakers in the C-pillar, and the Fraunhofer Symphoria technology. The 3D sound can be generated with a variety of sources.)
- Seat covers in fabric "Dynamik"
- Exterior mirrors electrically adjustable, heated and foldable, with automatic dimming on both sides (with integrated LED indicators and automatic curb detection for the passenger side mirror - mirror glass aspherical on the left, convex on the right - including heated windscreen washer nozzles)
- High Beam Assistant (within the system's limits, it automatically detects the headlights of oncoming traffic, the taillights of other road users, and light sources in built-up areas. Depending on the traffic situation, the high beam is automatically switched on or off. The system thus improves the driver's visibility and increases comfort.)
- Parking assistant with parking aid plus (Using ultrasonic sensors, the system searches for suitable parallel or parallel parking spaces. The parking path (forward and backward) is calculated for parallel parking spaces, and the parking path (in and out) is calculated for parallel parking spaces. The driver must accelerate, shift gears, and brake, as well as monitor the parking maneuver. The system handles the steering. The surroundings display warns of obstacles around the vehicle, depending on the path, within the system limits. Parking maneuvers in multiple moves are supported.)
- Seats: Front sports seats (with manual adjustment of seat height, seat fore/aft position, seat angle, backrest angle, and belt height - with visually integrated headrests on the front seats and with pronounced seat side bolsters for better lateral support when cornering)
- Steering wheel: 3-spoke leather steering wheel with multifunction plus and shift paddles (The height and reach of the steering wheel are manually adjustable. For convenient operation of the extensive standard and optional infotainment features, the steering wheel is equipped with twelve multifunction buttons. Shift paddles allow manual gear changes.)
- Telephone: Audi smartphone interface in conjunction with MMI navigation plus with MMI touch (The Audi smartphone interface (Android Auto and Apple CarPlay) connects your smartphone to your Audi and seamlessly displays your smartphone content directly on the MMI display via USB. Navigation, telephony, music, and selected third-party apps can be conveniently controlled via the MMI touch display and via voice control on your smartphone.)

## Brief expert findings

Documents submitted	At the time of the inspection, the registration certificate Part 2 (letter) was available, but the registration certificate Part 1 (certificate) was not. (Copy)
VIN comparison	The vehicle identification number (VIN) was read from the vehicle and its conformity with the submitted documents was verified during the inspection by the undersigned.
Inspection	The inspection conditions were sufficient for the assessment of the vehicle. Lifting equipment and a pit were available for examining the vehicle.
Test drive	No test drive/maneuvering was carried out during the inspection of the vehicle.
Engine function test	An engine test run was performed.

## Value reducing factors



No.	Component group	Description
1	Misc.	Main inspection - No evidence - No deduction
2	Equipment	Vehicle key (Batterie) - Empty - Replace
3	Equipment	Tirefit filler - Expired - Replace
4	Roof	Roof rail - left side - dent(s) - Smooth repair work
5	Side panel - rear right side	Side panel - dent(s) - Smooth repair work
6	Bonnet	Insulation lining - Broken / torn - Replace
7	Side panel - rear right side	Sill - Scratched - Smart repair
8	Sill - right side	Trim - Scratch(es) - Smart repair
9	Door - front right side	Door - Scratch(es) - Smart repair
10	Wheel / tyres	Alloy rim - front left side (Materialabtrag) - Scratched - Loss in value
11	Wheel / tyres	Alloy rim - front right side (Materialabtrag) - Scratched - Replace
12	Vehicle glazing	Windscreen (Rissbildung) - Stone chips - Replace
13	Front bumper	Front bumper (Verkratzt) - Broken / torn - repair according to calculation

## Wear and tear

No.	Component group	Description
1	Roof	Roof rail - right side - dent(s) - Smooth repair work
2	Bonnet	Bonnet - Dent / paintcoat damage - No deduction
3	Door - rear right side	Door - dent(s) - Smooth repair work
4	Door - front left side	Door - dent(s) - Smooth repair work

The vehicle shows signs of wear commensurate with its age and use.

## Accident damages

### No. Accident

1 Rear

## Order/Scope of order

The order was placed to prepare a sales report for the vehicle described. This includes the following:

- Description of core relevant information about the vehicle
- Documentation of equipment features  
(Delivery by third-party service providers)
- Documentation of damage, defects, missing parts
- Documentation of previous damage, unrepaired previous damage, repainting
- a brief visual or functional inspection of the equipment details if possible.  
(Functional tests of driver assistance systems are not included in the scope of services!)
- a photo documentation of the vehicle



## Basis for the order

This product is based on the Alphabet Fuhrpark GmbH guidelines for vehicle returns and valuations. The expert makes the explicit findings in each individual case objectively within the framework of the specified standards based on his or her own expertise.

The vehicle inspection takes place in a disassembled state.

Damage or defects that can only be detected during disassembly/diagnosis work or through advanced knowledge remain within the scope of the prognosis risk. An extended risk exists for concealed defects caused by fraudulent deception and not identifiable by the expert.

Damage or defects resulting from normal use or wear and tear of the vehicle will be accepted according to the applicable standard.

There was no explicit identification or monetary consideration of the expected features within the product.

Features which in their nature and severity slightly exceed normal use but do not constitute unacceptable damage will be documented and identified under signs of use if necessary.

Damage or defects which, according to the underlying standard, can no longer be attributed to normal use or wear and tear are listed in the product under "Depreciating Factors".

Depending on the product specification, a monetary ID can be provided. If this takes place, the costs can be 100% d or pro rata depending on the vehicle's age and mileage.

## Previous damages

Non-repaired previous damages were found at the vehicle. The necessary repair costs are listed in the expert report or if necessary, are listed in detail in a separately enclosed repair cost calculation.

## Comments

Der beiliegende Winterradsatz ist nicht Bestandteil der vorliegenden Fahrzeugausstattung.

Die beigefügte Reparaturkostenkalkulation wurde nach bestem Wissen und Gewissen unter eingeschränkten Besichtigungsbedingung im demontagefreien Zustand erstellt. Es können aufgrund verdeckter Beschädigung erhebliche Mehrkosten und somit Abweichung der für den Unfall ausgewiesenen Reparaturkosten nicht ausgeschlossen werden.



**Figure 1:** Diagonal front (left)



**Figure 2:** Diagonal front (right)



**Figure 3:** Diagonal rear (left)



**Figure 4:** Diagonal rear (right)



**Figure 5:** Interior - front



**Figure 6:** Interior - rear



Figure 7: Instrument cluster



Figure 8: Instrument panel



Figure 9: Interior 360° view ([Online link](#))



Figure 10: Cargo area



Figure 11: VIN



Figure 12: Mounted tyres



Figure 13: Documents



Figure 14: Additional tyres

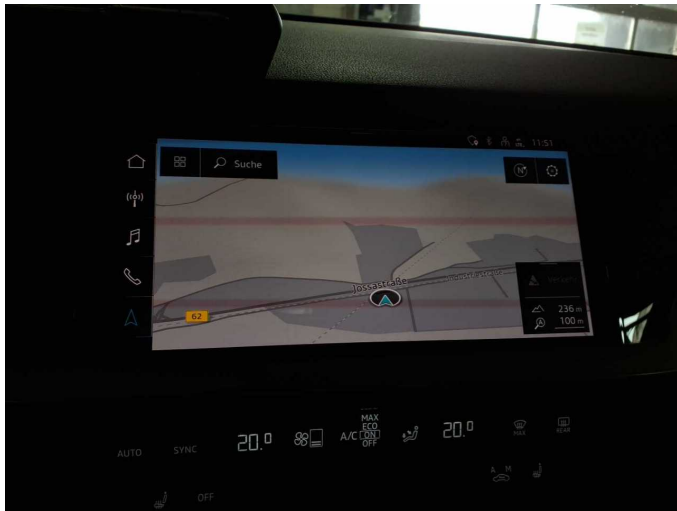


Figure 15: Navigation

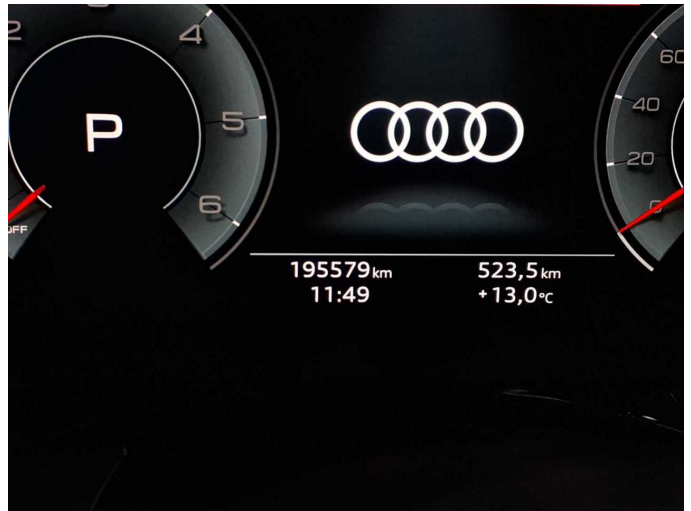


Figure 16: Misc.



Figure 17: Misc.



Figure 18: Misc.

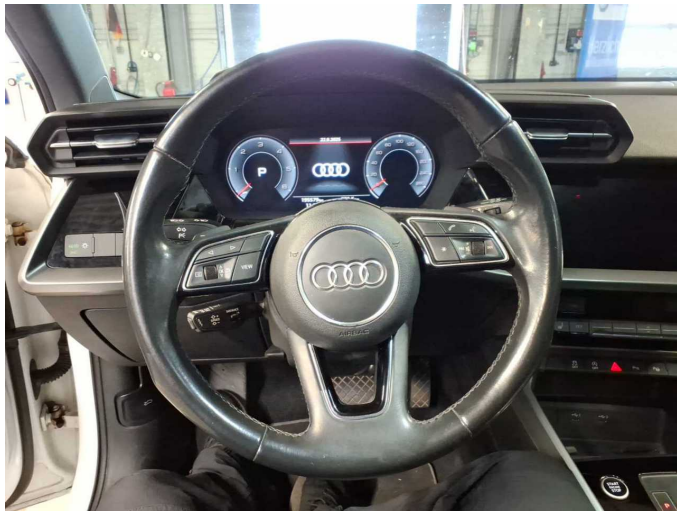


Figure 19: Misc.



Figure 20: Misc.



Figure 21: Misc.



Figure 22: Misc.



Figure 23: Misc.



Figure 24: Misc.



Figure 25: Misc.



Figure 26: Misc.

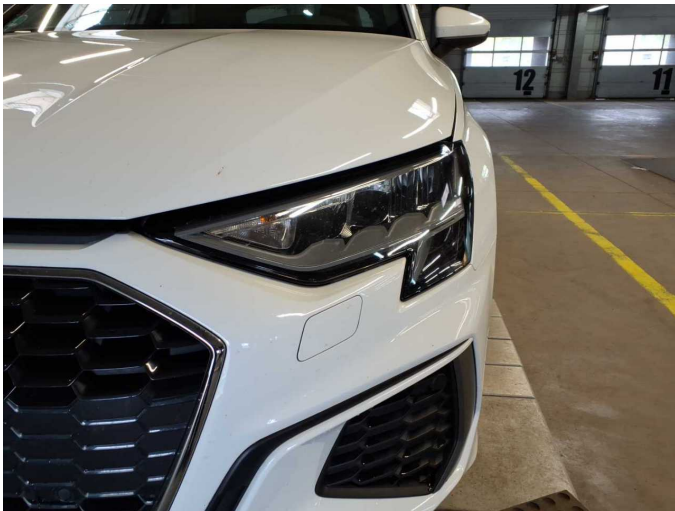


Figure 27: Misc.



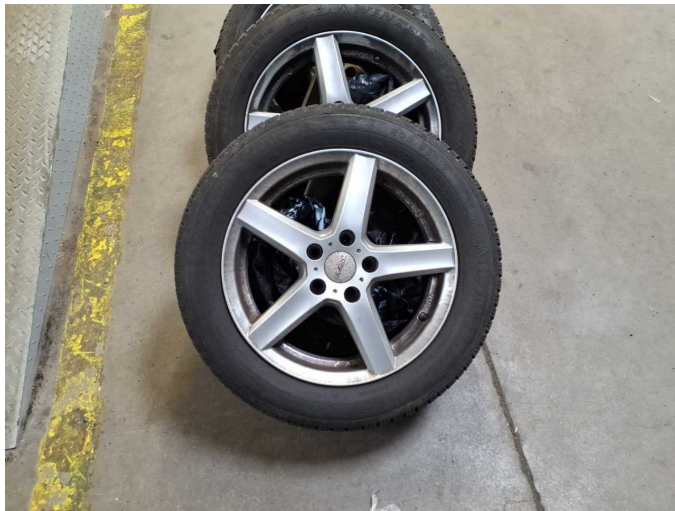
Figure 28: Misc.



Figure 29: Misc.



Figure 30: Misc.



**Figure 31:** Misc.



**Damage 2:** Equipment: Vehicle key (Batterie) - Empty - Replace



**Damage 3:** Equipment: Tirefit filler - Expired - Replace



**Damage 4:** Roof: Roof rail - left side - dent(s) - Smooth repair work



**Damage 4:** Roof: Roof rail - left side - dent(s) - Smooth repair work



**Damage 5:** Side panel - rear right side: Side panel - dent(s) - Smooth repair work



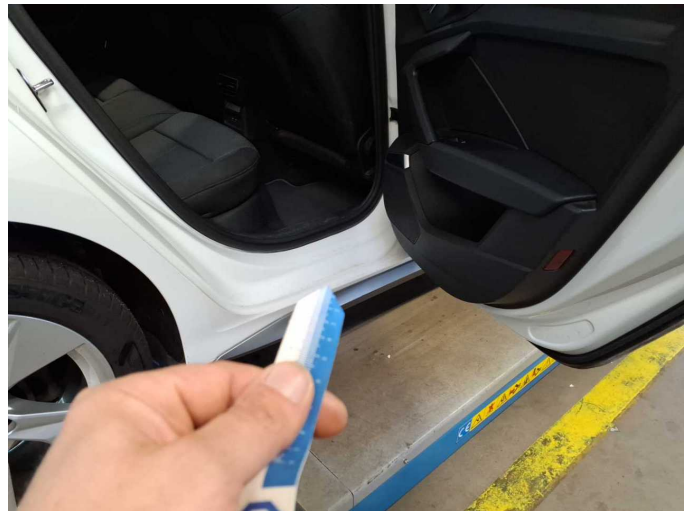
**Damage 5:** Side panel - rear right side: Side panel - dent(s) - Smooth repair work



**Damage 6:** Bonnet: Insulation lining - Broken / torn - Replace



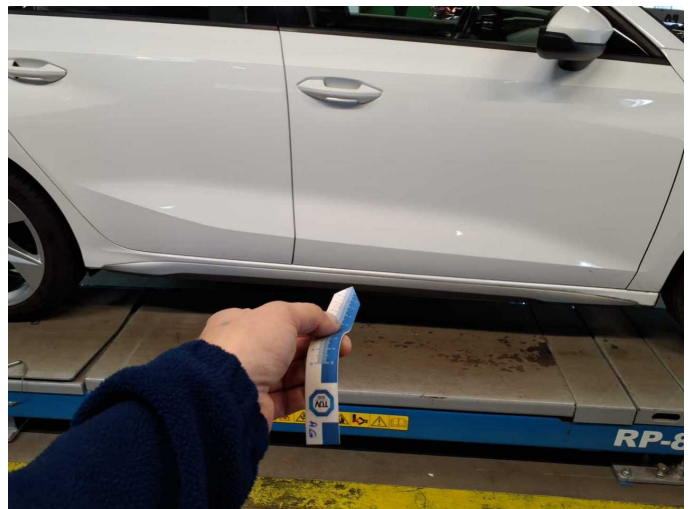
**Damage 6:** Bonnet: Insulation lining - Broken / torn - Replace



**Damage 7:** Side panel - rear right side: Sill - Scratched - Smart repair



**Damage 7:** Side panel - rear right side: Sill - Scratched - Smart repair



**Damage 8:** Sill - right side: Trim - Scratch(es) - Smart repair



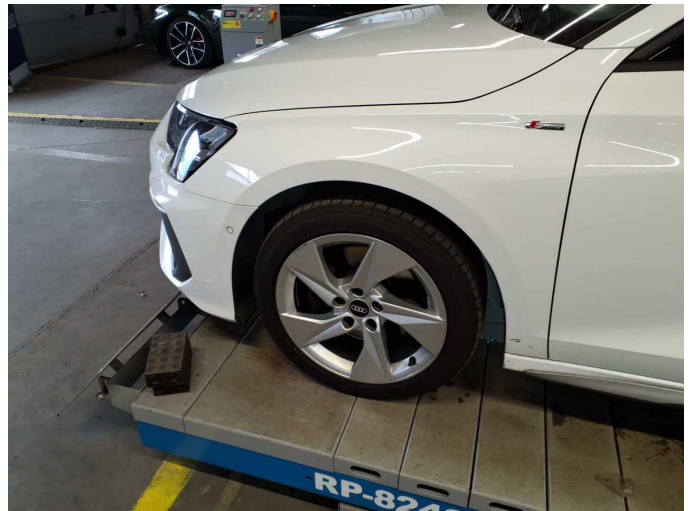
**Damage 8:** Sill - right side: Trim - Scratch(es) - Smart repair



**Damage 9:** Door - front right side: Door - Scratch(es) - Smart repair



**Damage 9:** Door - front right side: Door - Scratch(es) - Smart repair



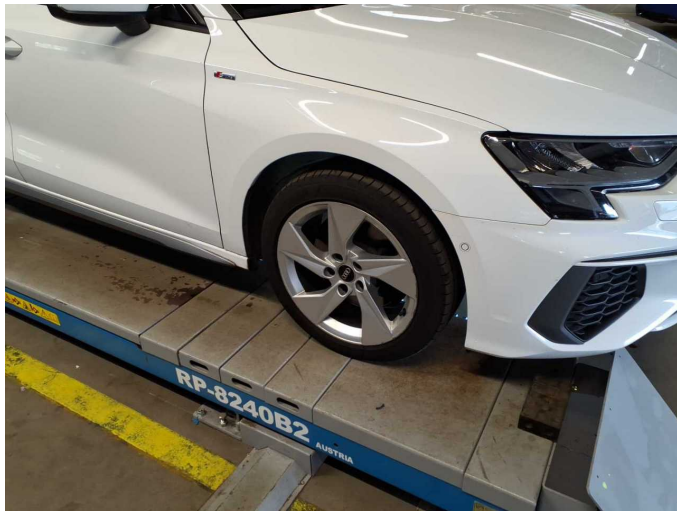
**Damage 10:** Wheel / tyres: Alloy rim - front left side (Materialabtrag) - Scratched - Loss in value



**Damage 10:** Wheel / tyres: Alloy rim - front left side (Materialabtrag) - Scratched - Loss in value



**Damage 10:** Wheel / tyres: Alloy rim - front left side (Materialabtrag) - Scratched - Loss in value



**Damage 11:** Wheel / tyres: Alloy rim - front right side (Materialabtrag) - Scratched - Replace



**Damage 11:** Wheel / tyres: Alloy rim - front right side (Materialabtrag) - Scratched - Replace



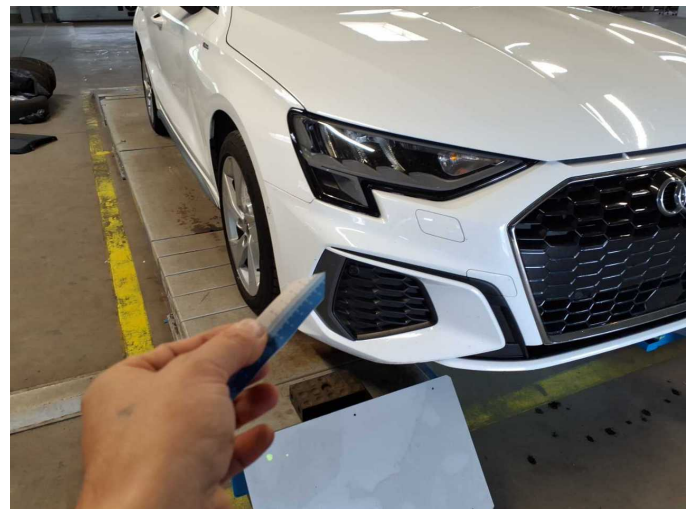
**Damage 12:** Vehicle glazing: Windscreen (Rissbildung) - Stone chips - Replace



**Damage 12:** Vehicle glazing: Windscreen (Rissbildung) - Stone chips - Replace



**Damage 13:** Front bumper: Front bumper (Verkratzt) - Broken / torn - repair according to calculation



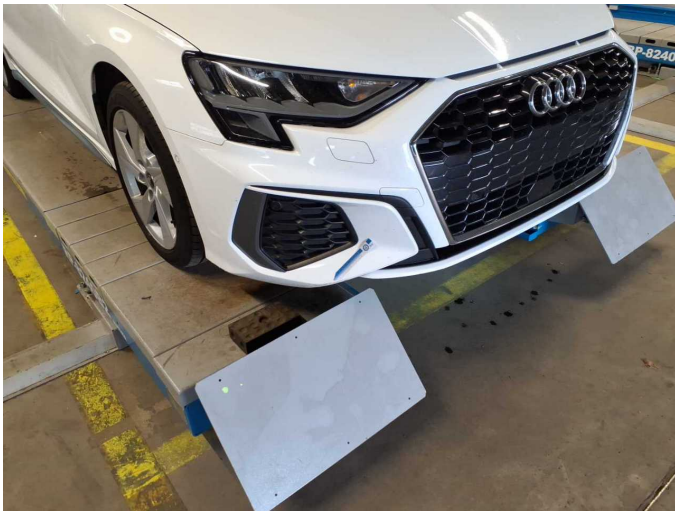
**Damage 13:** Front bumper: Front bumper (Verkratzt) - Broken / torn - repair according to calculation



**Damage 13:** Front bumper: Front bumper (Verkratzt) - Broken / torn - repair according to calculation



**Damage 13:** Front bumper: Front bumper (Verkratzt) - Broken / torn - repair according to calculation



**Damage 13:** Front bumper: Front bumper (Verkratzt) - Broken / torn - repair according to calculation



**Damage 13:** Front bumper: Front bumper (Verkratzt) - Broken / torn - repair according to calculation



**Damage 13:** Front bumper: Front bumper (Verkratzt) - Broken / torn - repair according to calculation



**Damage 13:** Front bumper: Front bumper (Verkratzt) - Broken / torn - repair according to calculation



**Damage 13:** Front bumper: Front bumper (Verkratzt) - Broken / torn - repair according to calculation



**Damage 13:** Front bumper: Front bumper (Verkratzt) - Broken / torn - repair according to calculation



**Wear and tear 1:** Roof: Roof rail - right side - dent(s) - Smooth repair work



**Wear and tear 1:** Roof: Roof rail - right side - dent(s) - Smooth repair work



**Wear and tear 2:** Bonnet: Bonnet - Dent / paintcoat damage - No deduction



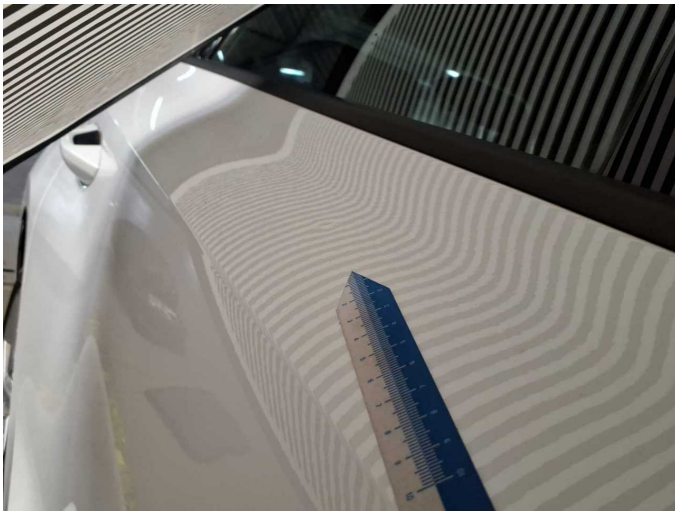
**Wear and tear 2:** Bonnet: Bonnet - Dent / paintcoat damage - No deduction



**Wear and tear 2:** Bonnet: Bonnet - Dent / paintcoat damage - No deduction



**Wear and tear 3:** Door - rear right side: Door - dent(s) - Smooth repair work



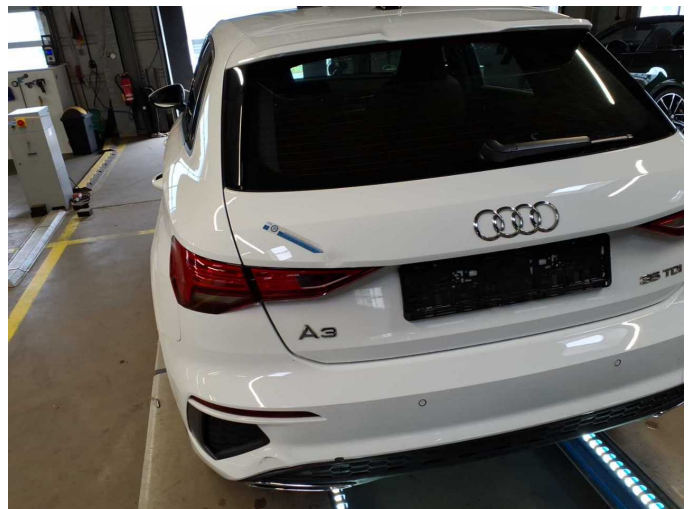
**Wear and tear 3:** Door - rear right side: Door - dent(s) - Smooth repair work



**Wear and tear 4:** Door - front left side: Door - dent(s) - Smooth repair work



**Wear and tear 4:** Door - front left side: Door - dent(s) - Smooth repair work



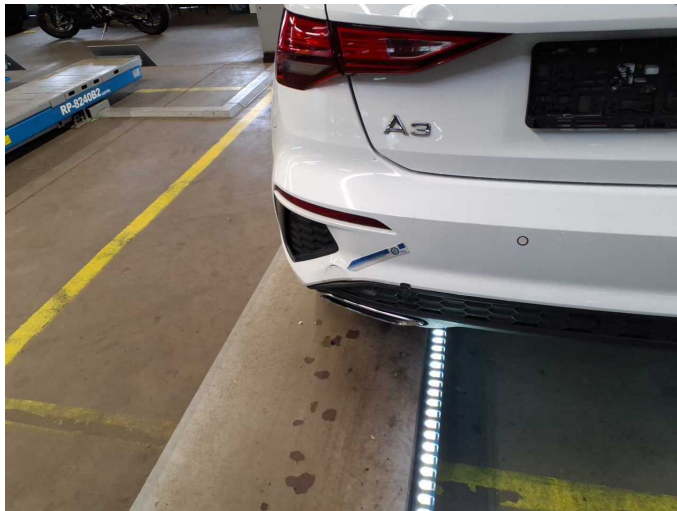
**Accident 1:** Rear



**Accident 1: Rear**



**Accident 1: Rear**



**Accident 1: Rear**



**Accident 1: Rear**



**Accident 1: Rear**



**Accident 1: Rear**



**Accident 1: Rear**



**Accident 1: Rear**