



Expertise

Protocol number: 41379729
Order No. / Reference: 25140030
Inspection date: 4 Sept 2025

Manufacturer: Audi

Model: A3 35 TDI Sportback S tronic

VIN: WAUZZZGY7MA112420



Vehicle details	
Manufacturer / Type / Model / Equipment	
Audi A3 35 TDI Sportback S tronic	
Vehicle Identification number	WAUZZZGY7MA112420
Mileage (Read)	102,867 km
First registration	21 Jun 2021
Number of holders	1
Power / Engine displacement	110 kw / 1,968 ccm
Fuel type / Cylinder	Diesel / 4
Gearbox / Number of gears	Automatic / 7
Type of drive	Front drive
Type of vehicle	Saloon car
Colour / colour code	Gletscherweiss Metallic
Doors / Seats	5 / 5
Upholstery type	Cloth
Colour of upholstery	Black-Anthracite



Vehicle details

Maintenance booklet / proof	digital proof / complete	Next maintenance in	17,200 km
Last maintenance on / at	06/2025 at 95,327 km		
Key is / should be	2 / 2	FZG documents	ZB#2 (B) was available (copy), ZB#1 (S) was not available
		Letter No.	GC269046
Previous damage / Accident	Detectable	Repainting	None detectable
Inspection conditions	sufficient	Lifting equipment / pit	yes
Test drive	Not performed	Engine function test	Performed
Manufacturer key number/ type code number	0588 / BZQ 00244		
Emission standard	EURO6;WLTP;AP;PI/CI; M, N1 I	Fine dust sticker	
Permitted total weight	1,965 kg	Empty weight	

Tyres

Mounted tyres

#	Tyre size	Type of tyre	Manufacturer	Tread depth
1)	205/55 R16 91V	Summer tyres on Light alloy	Nexen	5mm / 5mm
2)	205/55 R16 91V	Summer tyres on Light alloy	Nexen	5mm / 5mm

Additional tyres

#	Tyre size	Type of tyre	Manufacturer	Tread depth
1)	205/50 R17 93H	Winter tyres on Light alloy	Pirelli	5mm / 5mm
2)	205/50 R17 93H	Winter tyres on Light alloy	Pirelli	5mm / 5mm

Replacement

Typ	Tyre size	Type of tyre	Manufacturer	Tread depth
	Tirefit	Expiration date 03/2025		

Legend: Tread depth information for tires on the left is in the first place, for tires on the right is in the second place on the axle in the direction of travel

Equipment

Standard equipment

- Airbag for driver and front passenger
- Anti-lock braking system (ABS)
- Traction control ASR
- Audi pre sense front
- Exterior mirrors electrically adjustable and heated
- Brake light, third
- roof edge spoiler
- Digital instrument cluster - fully digital instrument cluster in 10.25 inches
- Electromechanical parking brake
- Electronic Stabilization Control (ESC)
- Electric windows front and rear
- Floor mats front and rear
- Speed limitation system
- Rear window wiper
- Child safety lock electrically operated
- Manual air conditioning
- Headrests (3) rear
- Paint finish: Uni
- Light and rain sensor
- Non-smoking version
- Radio: MMI Radio plus
- Tire repair kit
- Power steering, electromechanical
- Seat covers in fabric
- Seats: Folding rear seat backrest
- Start-stop system
- 12V socket
- Glazing: Heat-insulating glazing tinted green
- Airbag: Side airbags at the front, with head airbag and interaction airbag at the front
- Audi connect emergency call & service with Audi connect Remote & Control
- Exterior mirror housings in body color
- Headlining in steel grey fabric
- Diesel particulate filter additive-free (DPF)
- tachometer
- Electric auxiliary air heater
- Electronic differential lock (EDS)
- Chassis: Standard chassis
- Radio key (without Safe-Lock)
- Removable luggage compartment cover
- Transmission: S tronic 7-speed
- Interior lighting
- Child seat attachment i-Size and Top Tether for the outer rear seats
- Front headrests
- Steering wheel: Leather steering wheel in 3-spoke design with multifunction and shift paddles
- Wheel: Light alloy wheels - 16 inches - 5-double arm
- Tire pressure monitoring display
- Headlight
- 3-point automatic seat belts
- Seats: Standard seats in the front
- Lane Departure Warning
- 12 volt socket in the rear
- Daytime running light
- Electronic immobilizer

Extra equipment

- 2-zone comfort automatic climate control (electronically regulates air temperature, air flow, and distribution - separate temperature distribution for driver and passenger side - with sun position-dependent control - automatic air recirculation control - dust and odor-separating allergen filter - air vents in the rear center console - separate defroster button for faster defrosting of the windshield and side windows)
- Adaptive Cruise Assist (The adaptive cruise assist supports the driver with acceleration, braking, maintaining speed and distance, and lane guidance. This can increase driving comfort, especially on long journeys. The system maintains speed and distance from the vehicle in front and comfortably assists with lane keeping through corrective steering interventions.)
- Adaptive Cruise Control (S tronic) (Uses a radar sensor to detect vehicles ahead within the system limits and maintains the speed or distance as constant as possible within the control range. The speed range is between 0 and 210 km/h. The control range is between 30 and 210 km/h. In stop-and-go traffic, vehicles can brake to a standstill and, under certain conditions, move off automatically again. The distance can be set to five levels via Audi drive select or the ACC menu.)
- Audi pre sense basic (initiates preventive protective measures for the occupants within the system's limits by networking and synchronizing various vehicle systems. In unstable driving conditions, the front seat belts are electrically tensioned. The windows close as needed. The hazard warning lights are activated to warn following traffic.)



- Airbags: Front and rear side airbags, curtain airbag system, and front interaction airbag (front side airbags integrated into the seat backrests and rear side cushions. With curtain airbag system: deploys in front of the side window area to protect front and rear passengers in the event of a side impact.)
- Anti-theft alarm system (monitoring of doors, hood, and trunk lid. The Safelock, linked to the door locks, prevents the doors from being opened from the inside once the vehicle has been locked with the key. The anti-theft alarm system includes: - switchable ultrasonic interior monitoring - warning via tilt angle sensor in the event of theft - battery-powered horn to prevent wiring tampering)
- Business package (USB ports with charging function in the rear - Audi connect navigation & infotainment plus - Audi phone box - Audi virtual cockpit plus - Audi smartphone interface - MMI navigation plus with MMI touch - cruise control)
- Front center armrest (adjustable in inclination, longitudinally movable)
- Paint finish: metallic
- Phone: LTE support for Audi phone box
- Telephone: Audi smartphone interface in conjunction with MMI Navigation plus with MMI touch
- Wheel: Winter wheels with 4 light alloy wheels, 5-parallel spokes (6.5 J x 17, winter tires 205/50 R17)
- Camera-based traffic sign recognition (Supports the driver by displaying traffic signs detected within the system's limits, such as speed limits, no-overtaking zones, and temporary speed limits that are within the detection range of the front camera. The traffic sign recognition is displayed automatically on the digital instrument cluster display or in the optional Audi virtual cockpit.)
- Elimination of model name and performance/technology lettering
- Parking assistant with parking aid plus (Using ultrasonic sensors, the system searches for suitable parallel or parallel parking spaces. The parking path (forward and backward) is calculated for parallel parking spaces, and the parking path (in and out) is calculated for parallel parking spaces. The driver must accelerate, shift gears, and brake, as well as monitor the parking maneuver. The system handles the steering. The surroundings display warns of obstacles around the vehicle, depending on the path, within the system limits. Parking maneuvers in multiple moves are supported.)
- Steering wheel: 3-spoke leather steering wheel with multifunction plus and shift paddles (The height and reach of the steering wheel are manually adjustable. For convenient operation of the extensive standard and optional infotainment features, the steering wheel is equipped with twelve multifunction buttons. Shift paddles allow manual gear changes.)

Brief expert findings

Documents submitted	At the time of the inspection, the registration certificate Part 2 (letter) was available, but the registration certificate Part 1 (certificate) was not. (Copy)
VIN comparison	The vehicle identification number (VIN) was read from the vehicle and its conformity with the submitted documents was verified during the inspection by the undersigned.
Inspection	The inspection conditions were sufficient for the assessment of the vehicle. Lifting equipment and a pit were available for examining the vehicle.
Test drive	No test drive/maneuvering was carried out during the inspection of the vehicle.
Engine function test	An engine test run was performed.

Value reducing factors

No.	Component group	Description
1	Equipment	Tirefit filler - Expired - Replace
2	Roof	Roof - Damage by hail - Smooth repair work

Wear and tear

No.	Component group	Description
1	2nd wheel set	1 alloy rim - Scratch(es) - No deduction
2	Door - front right side	Door edge - Scratch(es) - No deduction

The vehicle shows signs of wear commensurate with its age and use.

Missing parts

Description

Documents - Log book



Description

Interior - Rear shelf

Accident damages

No. Accident

1 Front, Side - left

Order/Scope of order

The order was placed to prepare a sales report for the vehicle described. This includes the following:

- Description of core relevant information about the vehicle
- Documentation of equipment features
(*Delivery by third-party service providers*)
- Documentation of damage, defects, missing parts
- Documentation of previous damage, unrepaired previous damage, repainting
- a brief visual or functional inspection of the equipment details if possible.
(*Functional tests of driver assistance systems are not included in the scope of services!*)
- a photo documentation of the vehicle

Basis for the order

This product is based on the Alphabet Fuhrpark GmbH guidelines for vehicle returns and valuations. The expert makes the explicit findings in each individual case objectively within the framework of the specified standards based on his or her own expertise.

The vehicle inspection takes place in a disassembled state.

Damage or defects that can only be detected during disassembly/diagnosis work or through advanced knowledge remain within the scope of the prognosis risk. An extended risk exists for concealed defects caused by fraudulent deception and not identifiable by the expert.

Damage or defects resulting from normal use or wear and tear of the vehicle will be accepted according to the applicable standard.

There was no explicit identification or monetary consideration of the expected features within the product.

Features which in their nature and severity slightly exceed normal use but do not constitute unacceptable damage will be documented and identified under signs of use if necessary.

Damage or defects which, according to the underlying standard, can no longer be attributed to normal use or wear and tear are listed in the product under "Depreciating Factors".

Depending on the product specification, a monetary ID can be provided. If this takes place, the costs can be 100% d or pro rata depending on the vehicle's age and mileage.

Previous damages

Non-repaired previous damages were found at the vehicle. The necessary repair costs are listed in the expert report or if necessary, are listed in detail in a separately enclosed repair cost calculation.

Comments

- Die beigefügte Reparaturkostenkalkulation wurde nach bestem Wissen und Gewissen unter eingeschränkten Besichtigungsbedingung im demontagefreien Zustand erstellt. Es können aufgrund verdeckter Beschädigung erhebliche Mehrkosten und somit Abweichung der für den Unfall ausgewiesenen Reparaturkosten nicht ausgeschlossen werden



Figure 1: Diagonal front (left)



Figure 2: Diagonal front (right)



Figure 3: Diagonal rear (left)



Figure 4: Diagonal rear (right)



Figure 5: Interior - front



Figure 6: Interior - rear



Figure 7: Instrument cluster



Figure 8: Instrument panel



Figure 9: interior 360° view



Figure 10: Cargo area



Figure 11: VIN



Figure 12: Mounted tyres

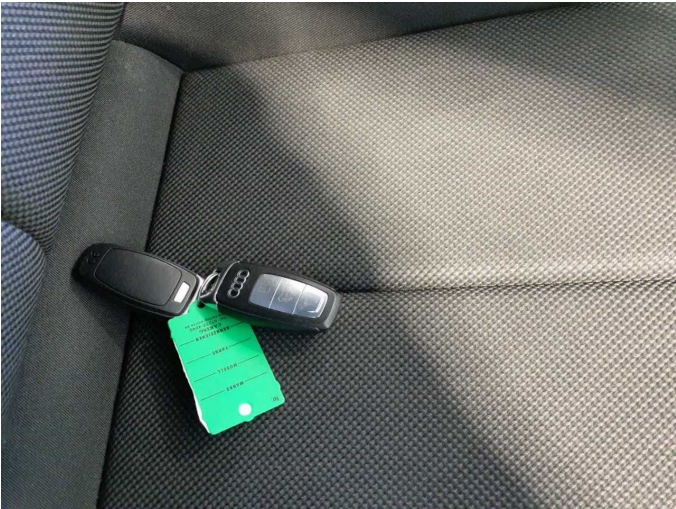


Figure 13: Documents



Figure 14: Documents



Figure 15: Additional tyres



Figure 16: Navigation



Figure 17: Misc.



Figure 18: Misc.



Figure 19: Misc.

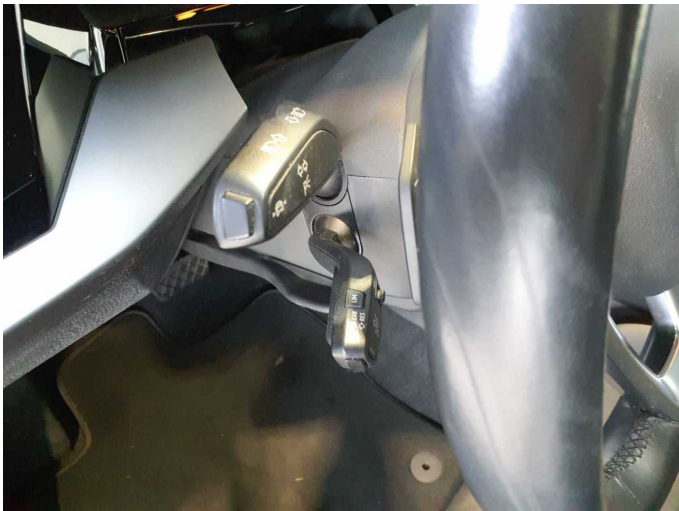


Figure 20: Misc.



Figure 21: Misc.

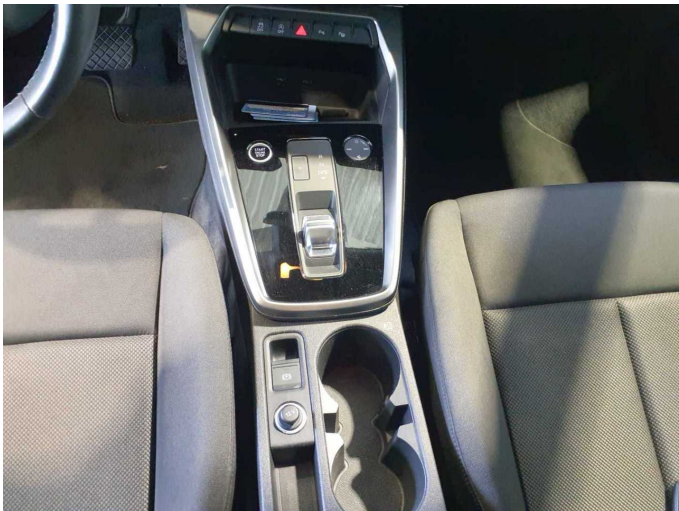


Figure 22: Misc.



Figure 23: Misc.

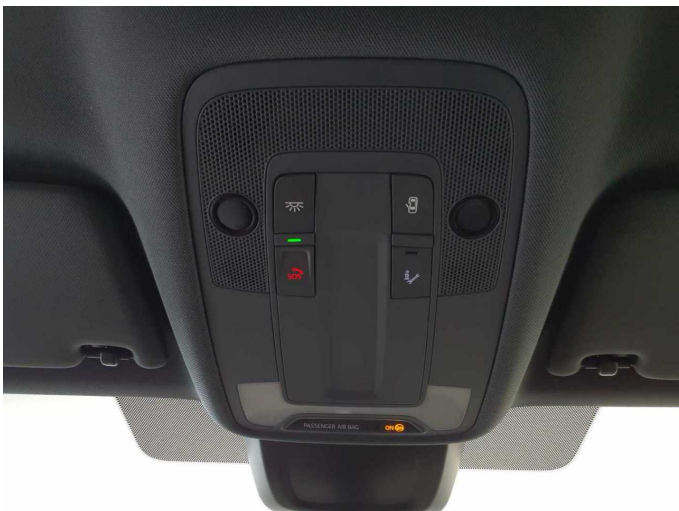


Figure 24: Misc.

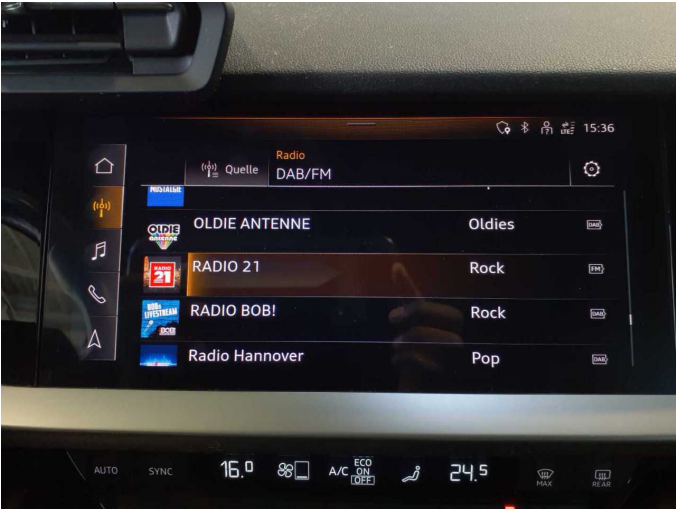


Figure 25: Misc.



Figure 26: Misc.



Figure 27: Misc.



Figure 28: Misc.

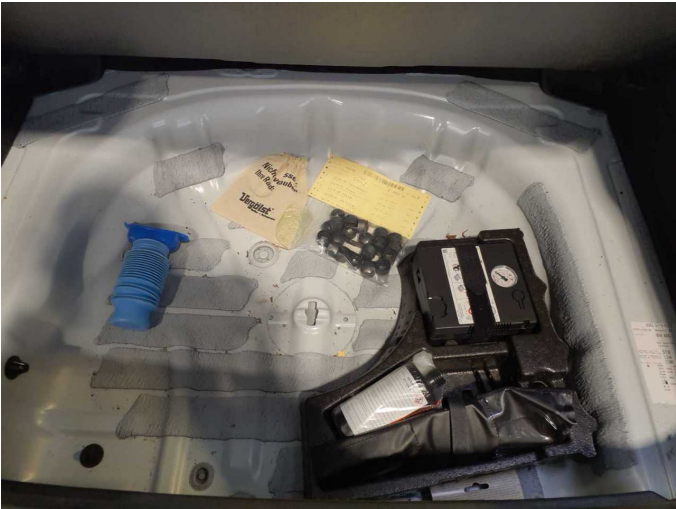


Figure 29: Misc.



Figure 30: Misc.



Damage 1: Equipment: Tirefit filler - Expired - Replace



Damage 2: Roof: Roof - Damage by hail - Smooth repair work



Damage 2: Roof: Roof - Damage by hail - Smooth repair work



Damage 2: Roof: Roof - Damage by hail - Smooth repair work



Damage 2: Roof: Roof - Damage by hail - Smooth repair work



Damage 2: Roof: Roof - Damage by hail - Smooth repair work



Damage 2: Roof: Roof - Damage by hail - Smooth repair work



Damage 2: Roof: Roof - Damage by hail - Smooth repair work



Damage 2: Roof: Roof - Damage by hail - Smooth repair work



Wear and tear 1: 2nd wheel set: 1 alloy rim - Scratch(es) - No deduction



Wear and tear 1: 2nd wheel set: 1 alloy rim - Scratch(es) - No deduction



Wear and tear 2: Door - front right side: Door edge - Scratch(es) - No deduction



Wear and tear 2: Door - front right side: Door edge - Scratch(es) - No deduction



Wear and tear 2: Door - front right side: Door edge - Scratch(es) - No deduction



Missing part 2: Interior: Rear shelf - Missing - Replace



Missing part 2: Interior: Rear shelf - Missing - Replace



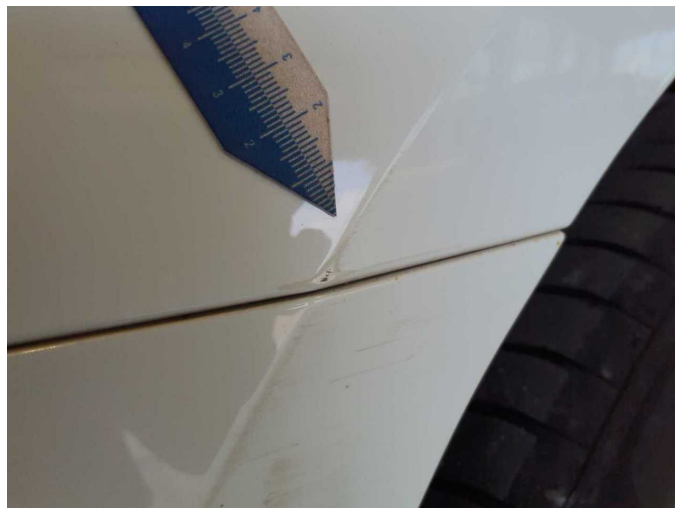
Accident 1: Front, Side - left



Accident 1: Front, Side - left



Accident 1: Front, Side - left



Accident 1: Front, Side - left



Wartungshistorie

(gemäß Auftraggeber Informationen)

Fahrgestellnummer: WAUZZZGY7MA112420
Hersteller / Modell: AUDI AUDI A3 35 TDI Sportback S tronic

Datum	KM-Stand	Beschreibung
18.07.2025	99.368	Systemtest/Eigendiagnose
06.06.2025	95.327	Bremsflüssigkeit; Bremsflüssigkeit ern; Kraftstofffilter ern; Luftfiltereinsatz ern; Motoröl b. Wartung; Ölfilter ern; Regelwartungsdienst; Wartung Sonstiges
17.12.2024	84.694	HU + AU
20.11.2023	61.267	Regelwartungsdienst
20.06.2023	49.231	Bremsflüssigkeit; Bremsflüssigkeit ern; Motoröl b. Wartung; Ölfilter ern; Ölwechsel; Wartung Sonstiges
04.10.2022	28.823	Motoröl b. Wartung; Ölfilter ern; Regelwartungsdienst; Wartung Sonstiges