



Expertise

Protocol number: 41342399
Order No. / Reference: 24977438
Inspection date: 2 Sept 2025

Manufacturer: Audi	Model: A3 40 TDI Limousine quattro S tronic S line
VIN: WAUZZZGY5NA103636	



Vehicle details	
Manufacturer / Type / Model / Equipment	
Audi A3 40 TDI Limousine quattro S tronic S line	
Vehicle Identification number	WAUZZZGY5NA103636
Mileage (Read)	101,332 km
First registration	19 Aug 2022
Number of holders	1
Power / Engine displacement	147 kw / 1,968 ccm
Fuel type / Cylinder	Diesel / 4
Gearbox / Number of gears	Automatic / 7
Type of drive	All-wheel drive
Type of vehicle	Saloon car
Colour / colour code	daytonagrau perleffekt (Z7S)
Doors / Seats	4 / 5
Upholstery type	Leather
Colour of upholstery	Black-Anthracite
Vehicle with smoke odor	no



Vehicle details

Maintenance booklet / proof	digital proof / complete	Next maintenance in	16,600 km
Last maintenance on / at	03/2025 at 92,592 km		
Key is / should be	2 / 2	FZG documents	ZB#2 (B) was available (copy), ZB#1 (S) was not available
		Letter No.	GJ272862
Previous damage / Accident	None detectable	Repainting	None detectable
Inspection conditions	sufficient	Lifting equipment / pit	yes
Test drive	short drive on the company premises	Engine function test	Performed
Manufacturer key number/ type code number	0588 / BMW 00359		
Emission standard	EURO6;WLTP;AP;PI/CI; M, N1 I	Fine dust sticker	
Permitted total weight	2,015 kg	Empty weight	

Tyres

Mounted tyres

#	Tyre size	Type of tyre	Manufacturer	Tread depth
1)	235/35 R19 91Y	Summer tyres on Light alloy	Continental	5mm / 5mm
2)	235/35 R19 91Y	Summer tyres on Light alloy	Continental	6mm / 6mm

Additional tyres

#	Tyre size	Type of tyre	Manufacturer	Tread depth
1)	205/50 R17 93H	Winter tyres on Light alloy	Bridgestone	2mm / 1mm
2)	205/50 R17 93H	Winter tyres on Light alloy	Continental	8mm / 8mm

Replacement

Typ	Tyre size	Type of tyre	Manufacturer	Tread depth
	Tirefit	Expiration date 05/2026		

Legend: Tread depth information for tires on the left is in the first place, for tires on the right is in the second place on the axle in the direction of travel

Equipment

Standard equipment

- Airbag for driver and front passenger (with passenger airbag deactivation)
- All-wheel drive "quattro" (driving situation-dependent all-wheel drive of all 4 wheels)
- Anti-lock braking system (ABS) (with electronic brake force distribution (EBD), hydraulic brake assist)
- Audi connect Emergency Call & Service m.connect Remote & Control (The Audi connect Emergency Call & Service services ensure a feeling of security on every journey. - Emergency call - Online breakdown call - Audi damage service - Audi service appointment online Audi connect Remote & Control: - Vehicle status - Remote locking/unlocking - Parking position - Remote control auxiliary heating - Push notification for the anti-theft alarm system)
- Electrically adjustable and heated exterior mirrors (with integrated LED indicators - mirror glass left aspherical, right convex - including heated windscreen washer nozzles)
- Diesel particulate filter additive-free (DPF)
- tachometer
- Rear parking aid (supports reverse parking and maneuvering within system limits by acoustically indicating the distance to a detected object behind the vehicle. Measurement is performed by ultrasonic sensors discreetly integrated into the bumper, which are activated when reverse gear is engaged.)
- Door sills with aluminum inserts at the front, illuminated, with S lettering
- Electric auxiliary air heater
- Electronic differential lock (EDS)
- Electronic Stabilization Control (ESC)
- Chassis: Sports suspension (sports suspension with more dynamic spring-damper tuning and lowered by 15 mm, for more direct road contact and sportier handling.)
- Floor mats front and rear (velour in black)
- Speed limit system (supports you in maintaining a constant driving style and adhering to speed limits through adjustable maximum speed)
- Child seat attachment i-Size and Top Tether for the outer rear seats
- Headrests (3) rear
- Steering wheel: 3-spoke leather steering wheel with multifunction controls and shift paddles (The height and reach of the steering wheel are manually adjustable. For convenient operation of the extensive standard and optional infotainment features, the steering wheel is equipped with six multifunction buttons. Shift paddles allow manual gear changes.)
- Tire pressure monitoring indicator (visual and acoustic warning in case of pressure loss on one or more wheels)
- Tire repair kit (with tire sealant and compressor)
- Airbag: Front side airbags with head airbag system and front interaction airbag (In addition to the front side airbags and the head airbags, an interaction airbag is installed at the front, which deploys when necessary within the system limits between the driver and front passenger seats)
- Traction Control (ASR) (prevents wheel spin by reducing engine power and provides more stability and improved traction on the road)
- Audi pre sense front (within the system limits, uses front radar to detect the area in front of the vehicle and warns the driver with visual and acoustic signals to indicate a potentially dangerous situation caused by vehicles ahead or stationary vehicles. Pedestrian and cyclist detection registers, within the system limits, when a pedestrian or cyclist is moving on or crossing the roadway. The system then warns the driver with an acoustic and visual signal.)
- Exterior mirror housings in body color
- Brake light, third
- Headlining in steel grey fabric
- Digital instrument cluster - fully digital instrument cluster in 10.25 inches (speed, time, mileage, outside temperature, fuel warning with remaining range, gear shift recommendation (for manual transmission and automatic transmission in manual mode), current radio station or music track, radio and media lists, display in classic style, if available: telephone menu (in conjunction with multifunction steering wheel), on-board computer with short- and long-term memory, fuel-saving tips for more economical driving including break recommendation)
- Electromechanical parking brake (includes parking brake function when stationary, starting aid through automatic release when starting off and emergency braking function while driving across all four wheels)
- Electric windows front and rear
- Remote key (without Safe-Lock) (unlocks and locks doors, luggage compartment and fuel tank flap - including convenient closing/opening of windows)
- Transmission: S tronic 7-speed
- Interior lighting (roof module front and rear, including reading lights (bulbs) - glove box lighting (bulb) - LED trunk lighting right)
- Front headrests
- Light and rain sensor
- Non-smoking version (with 12 volt socket and storage compartment)



- Power steering, electromechanical (with speed-dependent steering assistance)
- 3-point automatic seat belts (3-point automatic seat belts for all seats, pyrotechnic belt tensioners, belt height adjustment in the front, belt force limiters on all outer seats)
- Seats: Rear seat backrest foldable (split, 40 : 60 or fully foldable)
- Start-stop system
- 12 volt socket in the rear
- 12V socket
- Daytime running light
- Glazing: Heat-insulating glazing tinted green (for rear window, door and side windows - rear window heated, with timer)

Extra equipment

- Exterior mirrors electrically adjustable, heated and foldable, with automatic dimming on both sides (with integrated LED indicators and automatic curb detection for the passenger side mirror - mirror glass aspherical on the left, convex on the right - including heated windscreen washer nozzles)
- Cruise control (maintains the individually set speed between 20 and 250 km/h, engine power permitting. It is operated via a separate steering column stalk. The set speed is displayed in the digital instrument cluster. The system does not react to vehicles ahead with distance control. Includes an adjustable speed limiter.)
- Paint: Daytona Grey Pearl Effect
- LED headlights and LED taillights with dynamic rear indicators (daytime running lights, dipped beam, high beam, position light, indicator, cornering light, all-weather light (to reduce glare in poor visibility conditions), motorway light, static cornering light, maneuvering light (illumination of the maneuvering area at the front and sides when reversing), automatic dynamic headlight range control, intersection light (in conjunction with MMI Nav. plus), dynamic rear indicators, brake lights, tail lights, rear license plate lights, reversing lights)
- Ambient lighting package plus (glove box lighting (bulb), LED trunk lighting right, roof module front/rear, including reading lights (LED), illuminated vanity mirror (LED), entry lights on the underside of the front doors (LED), footwell lighting front (LED), entry lights on the underside of the rear doors (white), dashboard contour lighting (multi-colored), ambient door lighting front/rear (multi-colored), contour lighting front/rear doors (multi-colored), center console storage compartment (multi-colored))

- Radio: MMI Radio plus (10.1-inch color display (1,540 x 720) including MMI touch operation, digital instrument cluster with 10.25-inch color display, Audi music interface with two USB-C ports, each with data and charging function, Bluetooth interface (hands-free calling and audio streaming), passive speakers with 4 speakers at the front and 2 at the rear (80 watts), AM/FM phase diversity, DAB+, speed-dependent volume adjustment, voice dialogue system for controlling infotainment and vehicle functions, Wi-Fi hardware)
- Seats: Standard front seats (with manual adjustment of seat height, seat fore/aft position, backrest angle, headrest and belt height)
- Lane Departure Warning (helps prevent unintentional lane departure within system limits. If the system is activated and ready, and the driver has not activated the turn signal, the Lane Departure Warning helps prevent crossing detected lane markings by correcting the steering. An additional steering wheel vibration can be adjusted upon driver request. Functional range from approximately 60 to a maximum of 250 km/h.)
- Electronic immobilizer

- Elimination of model name and performance/technology lettering
- High Beam Assistant (within the system's limits, it automatically detects the headlights of oncoming traffic, the taillights of other road users, and light sources in built-up areas. Depending on the traffic situation, the high beam is automatically switched on or off. The system thus improves the driver's visibility and increases comfort.)
- Interior mirror, automatically dimming, frameless
- 2-zone comfort automatic climate control (electronically regulates air temperature, air flow, and distribution - separate temperature distribution for driver and passenger side - with sun position-dependent control - automatic air recirculation control - dust and odor-separating allergen filter - air vents in the rear center console - separate defroster button for faster defrosting of the windshield and side windows)
- Steering wheel: 3-spoke leather steering wheel with multifunction plus and shift paddles (The height and reach of the steering wheel are manually adjustable. For convenient operation of the extensive standard and optional infotainment features, the steering wheel is equipped with twelve multifunction buttons. Shift paddles allow manual gear changes.)
- Business package (USB ports with charging function in the rear - Audi connect navigation & infotainment plus - Audi phone box - Audi virtual cockpit plus - smartphone interface (Android Auto and Apple CarPlay) - MMI navigation plus with MMI touch - cruise control)
- Dynamic package (S tronic) (sports suspension - brake calipers painted red - Audi drive select - progressive steering - sound actuator, for an enhanced engine sound experience in the vehicle interior)



- S line (S tronic) interior package (front sports seats with manual adjustment of seat height, fore/aft position, seat angle, backrest angle, and belt height, as well as headrests in Puls fabric/mono.pur 550-K synthetic leather. 3-spoke leather steering wheel with multifunction plus and shift paddles including steering wheel grips in perfect leather. Armrests in the front and rear doors in synthetic leather. Decorative inlay in aluminum spectrum dark. Door sills with aluminum inserts (front, illuminated, with S lettering). Roof lining in black fabric. Center armrest (front), floor mats, pedals and footrest in stainless steel.)
- Wheel: Audi Sport light alloy wheels, 5-twin-spoke Edge, anthracite black, high-sheen (8.0 J x 19, tires 235/35 R 19)
- Wheel: Winter wheels with 4 light alloy wheels, 5-parallel spokes (6.5 J x 17, winter tires 205/50 R17)
- Radio accessories: Audi sound system (10 speakers, including center speaker and subwoofer, total power 180 watts, 6-channel amplifier.)
- Seats: Folding rear seat backrest (three-piece), with center armrest (split 40 : 20 : 40 or fully foldable; with center armrest and cup holders)
- Front seat heating (heats the seat and backrest center panel (standard fabric seats), otherwise the seat and backrest center panel and seat side bolsters - individually adjustable in 3 stages for the driver and front passenger side via the direct selection button on the climate control panel)
- Phone: LTE support for Audi phone box
- Telephone: Smartphone interface in conjunction with MMI Navigation plus with MMI touch (The smartphone interface (Android Auto and Apple CarPlay) connects your smartphone to your Audi and brings your smartphone content seamlessly directly to the MMI display. Navigation, telephony, music and selected third-party apps can be conveniently controlled via the MMI touch display and via voice control. The connection can be made either using a suitable USB cable or wirelessly)
- Package: Black plus styling package (Black styling package with Audi rings at the front and rear and model lettering at the rear in black. On the S model, the model name in the radiator grille is also black)
- Parking assistant with parking aid plus (Using ultrasonic sensors, the system searches for suitable parallel or parallel parking spaces. The parking path (forward and backward) is calculated for parallel parking spaces, and the parking path (in and out) is calculated for parallel parking spaces. The driver must accelerate, shift gears, and brake, as well as monitor the parking maneuver. The system handles the steering. The surroundings display warns of obstacles around the vehicle, depending on the path, within the system limits. Parking maneuvers in multiple moves are supported.)
- Seat upholstery in leather/synthetic leather mono.pur 550 combination with S-embossing (seat center panel of the front and both outer rear seats in leather - seat side bolsters, headrests, middle seat in the rear and front center armrest (if ordered) in synthetic leather mono.pur 550)
- Telephone: Audi Phone Box (universal Bluetooth interface - convenient, integrated hands-free system - coupling antenna for connecting the mobile phone to the external antenna for improved reception quality - lower radiation in the vehicle interior - LTE support - charging option via USB port or wireless charging (Qi standard) - forget-it warning - charging status display in the MMI touch display - connection of a second mobile phone)
- Glazing: Windscreen in acoustic glazing (heat-insulating glazing with improved acoustic insulation value of the windscreen)
- Glazing: Sun protection glazing tinted (rear window, rear door and side windows tinted)

Brief expert findings

Documents submitted	At the time of the inspection, the registration certificate Part 2 (letter) was available, but the registration certificate Part 1 (certificate) was not. (Copy)
VIN comparison	The vehicle identification number (VIN) was read from the vehicle and its conformity with the submitted documents was verified during the inspection by the undersigned.
Inspection	The inspection conditions were sufficient for the assessment of the vehicle. Lifting equipment and a pit were available for examining the vehicle.
Test drive	A short maneuvering and shunting trip was carried out on the company premises.
Engine function test	An engine test run was performed.

Value reducing factors

No.	Component group	Description
1	Side panel - rear left side	Sill - dent(s) - Smart repair
2	Rear bumper	Rear bumper - Scratch(es) - Smart repair



No.	Component group	Description
3	Trim / covers	Sill - front left side - dent(s) - Replace
4	2nd wheel set	2 tyres - Worn - Replace
5	2nd wheel set	1 alloy rim - Scratched - Replace
6	Wheel / tyres	Alloy rim - front right side - Scratched - Replace

Wear and tear

No.	Component group	Description
1	Bonnet	Bonnet - Stone chips - No deduction
2	Wing mirror - right side	Cap - Scratch(es) - No deduction
3	Front bumper	Front bumper (unterhalb nicht im Sichtfeld) - Scratch(es) - No deduction

The vehicle shows signs of wear commensurate with its age and use.

Missing parts

Description

Equipment - Tirefit compressor

Order/Scope of order

The order was placed to prepare a sales report for the vehicle described. This includes the following:

- Description of core relevant information about the vehicle
- Documentation of equipment features
(*Delivery by third-party service providers*)
- Documentation of damage, defects, missing parts
- Documentation of previous damage, unrepaired previous damage, repainting
- a brief visual or functional inspection of the equipment details if possible.
(*Functional tests of driver assistance systems are not included in the scope of services!*)
- a photo documentation of the vehicle

Basis for the order

This product is based on the Alphabet Fuhrpark GmbH guidelines for vehicle returns and valuations. The expert makes the explicit findings in each individual case objectively within the framework of the specified standards based on his or her own expertise.

The vehicle inspection takes place in a disassembled state.

Damage or defects that can only be detected during disassembly/diagnosis work or through advanced knowledge remain within the scope of the prognosis risk. An extended risk exists for concealed defects caused by fraudulent deception and not identifiable by the expert.

Damage or defects resulting from normal use or wear and tear of the vehicle will be accepted according to the applicable standard.

There was no explicit identification or monetary consideration of the expected features within the product.

Features which in their nature and severity slightly exceed normal use but do not constitute unacceptable damage will be documented and identified under signs of use if necessary.

Damage or defects which, according to the underlying standard, can no longer be attributed to normal use or wear and tear are listed in the product under "Depreciating Factors".

Depending on the product specification, a monetary ID can be provided. If this takes place, the costs can be 100% d or pro rata depending on the vehicle's age and mileage.

Previous damages

Apparently, no repaired previous damage could be found on the vehicle.



Comments

Das Fahrzeug befand sich zum Besichtigungszeitpunkt in beschädigten, nicht demontierten Zustand. Schadenausweitung möglich, Zusatzkosten können entstehen.



Figure 1: Diagonal front (left)



Figure 2: Diagonal front (right)



Figure 3: Diagonal rear (left)



Figure 4: Diagonal rear (right)



Figure 5: Interior - front



Figure 6: Interior - rear



Figure 7: Instrument cluster



Figure 8: Instrument panel



Figure 9: interior 360° view



Figure 10: Cargo area

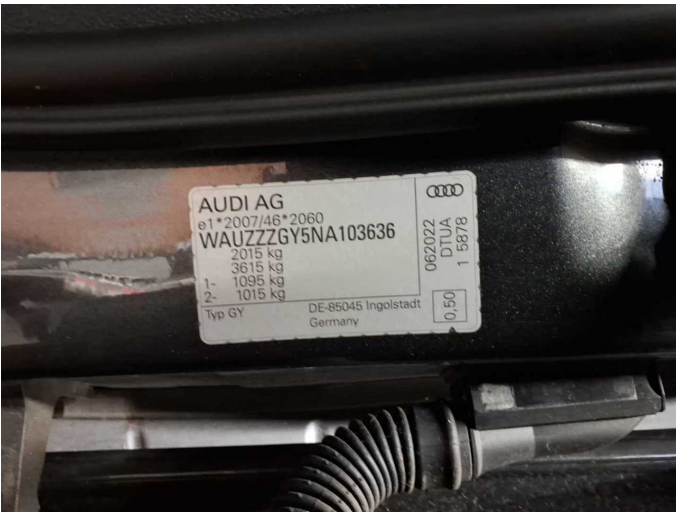


Figure 11: VIN



Figure 12: Mounted tyres



Figure 13: Documents



Figure 14: Documents



Figure 15: Documents



Figure 16: Additional tyres



Figure 17: Navigation



Figure 18: Misc.



Figure 19: Misc.



Figure 20: Misc.



Figure 21: Misc.



Figure 22: Misc.



Figure 23: Misc.

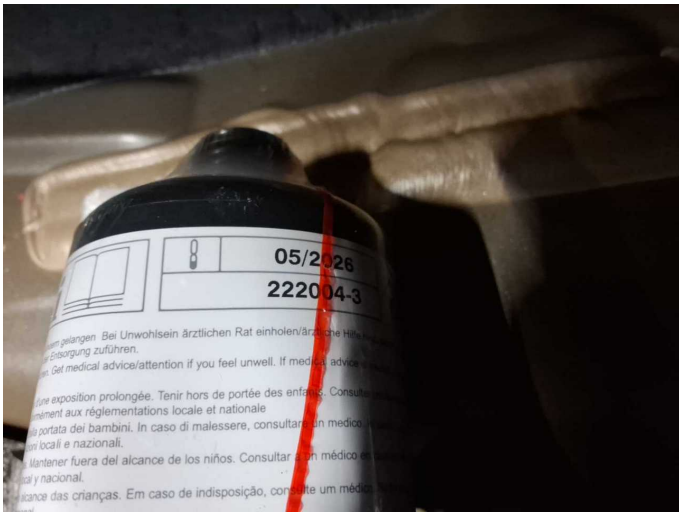


Figure 24: Misc.



Figure 25: Misc.



Figure 26: Misc.



Figure 27: Misc.



Figure 28: Misc.



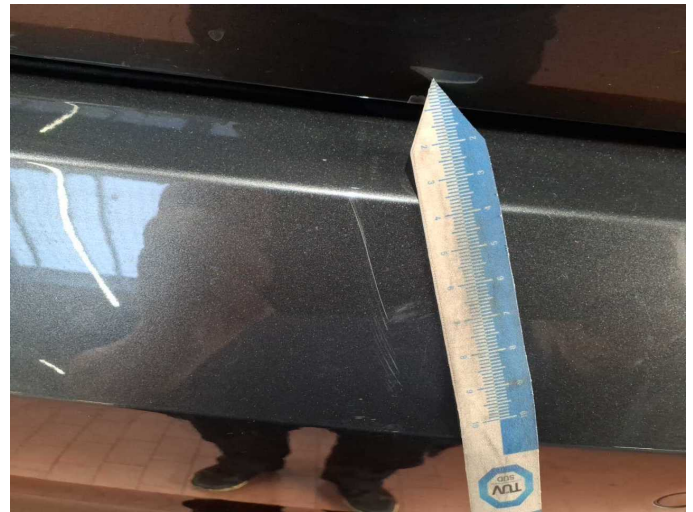
Damage 1: Side panel - rear left side: Sill - dent(s) - Smart repair



Damage 1: Side panel - rear left side: Sill - dent(s) - Smart repair



Damage 2: Rear bumper: Rear bumper - Scratch(es) - Smart repair



Damage 2: Rear bumper: Rear bumper - Scratch(es) - Smart repair



Damage 3: Trim / covers: Sill - front left side - dent(s) - Replace



Damage 3: Trim / covers: Sill - front left side - dent(s) - Replace



Damage 3: Trim / covers: Sill - front left side - dent(s) - Replace



Damage 4: 2nd wheel set: 2 tyres - Worn - Replace



Damage 4: 2nd wheel set: 2 tyres - Worn - Replace



Damage 4: 2nd wheel set: 2 tyres - Worn - Replace



Damage 4: 2nd wheel set: 2 tyres - Worn - Replace



Damage 5: 2nd wheel set: 1 alloy rim - Scratched - Replace



Damage 5: 2nd wheel set: 1 alloy rim - Scratched - Replace



Damage 6: Wheel / tyres: Alloy rim - front right side - Scratched - Replace



Damage 6: Wheel / tyres: Alloy rim - front right side - Scratched - Replace



Wear and tear 2: Wing mirror - right side: Cap - Scratch(es) - No deduction



Wear and tear 2: Wing mirror - right side: Cap - Scratch(es) - No deduction



Wear and tear 3: Front bumper: Front bumper (unterhalb nicht im Sichtfeld) - Scratch(es) - No deduction



Wear and tear 3: Front bumper: Front bumper (unterhalb nicht im Sichtfeld) - Scratch(es) - No deduction



Wartungshistorie

(gemäß Auftraggeber Informationen)

Fahrgestellnummer: WAUZZZGY5NA103636

Hersteller / Modell: AUDI AUDI A3 40 TDI Limousine quattro S tronic S line

Datum	KM-Stand	Beschreibung
31.03.2025	92.592	Getriebeöl ern/prüfen; Kraftstofffilter ern; Luftfiltereinsatz ern; Motoröl b. Wartung; Ölfilter ern; Ölwechsel - Hinterachse; Regelwartungsdienst; Reparatur Sonstiges; Wartung Sonstiges
11.10.2024	78.981	Bremsflüssigkeit; Bremsflüssigkeit ern
12.03.2024	57.959	Bremse Sonstiges; Bremsklötze hinten; Bremsklötze vorne; Bremsscheiben hinten; Bremsscheiben vorne; Motoröl b. Wartung; Ölfilter ern; Regelwartungsdienst; Wartung Sonstiges
06.06.2023	29.065	Motoröl b. Wartung; Regelwartungsdienst