



# AUDI A3

## A3 35 TFSI Sportback S tronic

VIN NO WAUZZZGY5NA003357  
Registration Number Y5NA003357



MOT Date

2026-12-01

Last Service



Number of Owners

1

Last Service Mileage



Number of Keys

2

First Registration Date

2021-09-06

Odometer Reading

37848 km

Country First Registered

Germany

### Inspection Report Summary

Customer	BCA Online	Report Number	P20250821093147
Inspection Date / Place	2025-08-21 / BCA Oberndorf	Cosmetic Grade	4

### Vehicle Summary

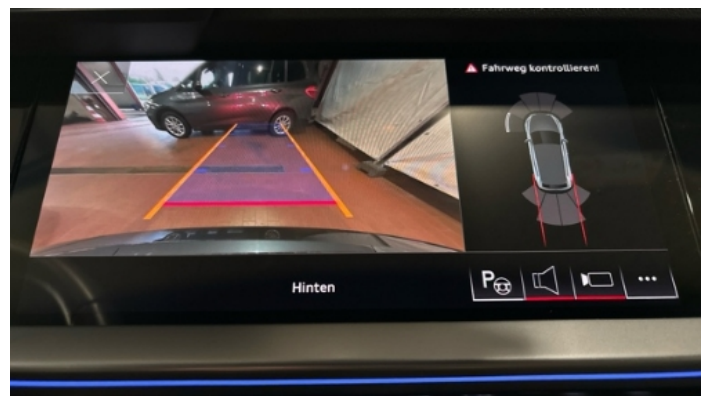
Vehicle Condition	Runner	VAT Type	Qualifying
Fuel Type	Petrol	Road Worthy	Yes
Colour	Grey	Engine Size (cc)	1498
Engine Size	1.5	No of Doors	5
Body Type	Stationwagon / Estate	Drive Train	Front
Seat Colour		No of Seats	5
Seat Covering Name	Schwarz/grau	Seat Covering	Cloth
Charging Cables		WLTP CO2 Emissions	
Gearbox Type	Automatic		

### Vehicle History & Documents

Service Book Available	Present	Next Service Mileage	km
Previous Usage		Imported	No
Manufacturer Warranty			











## Equipment

Tinted Glass	Airbag Status	Ambientlighting	Anti-lock braking
Bluetooth telephone interface	Digital Radio	Fatiguewarningsystem	Heated wing mirrors
Remote central locking	Satellite navigation	Stability control	Distancewarningsystem
Electrictailgate	Laneassist	LED Headlamps	Rear parking sensors
USB Socket	Alloys wheels	AndroidAuto	AppleCarPlay
Cruise control	Digitaldashboard	Front parking sensors	Remote adjusting wing mirrors
Reversing Camera	Split folding rear seats	Central locking	Electrically folding wing mirrors
Emergencybrakeassist	Leather steering wheel	Radio	

## Equipment Details

Air Conditioning	Dual Zone Climate Control	Alloy Wheel Size	17
Extra Wheel / Tyre Set	Winter Tyres - Steel	Seat Heating	Front

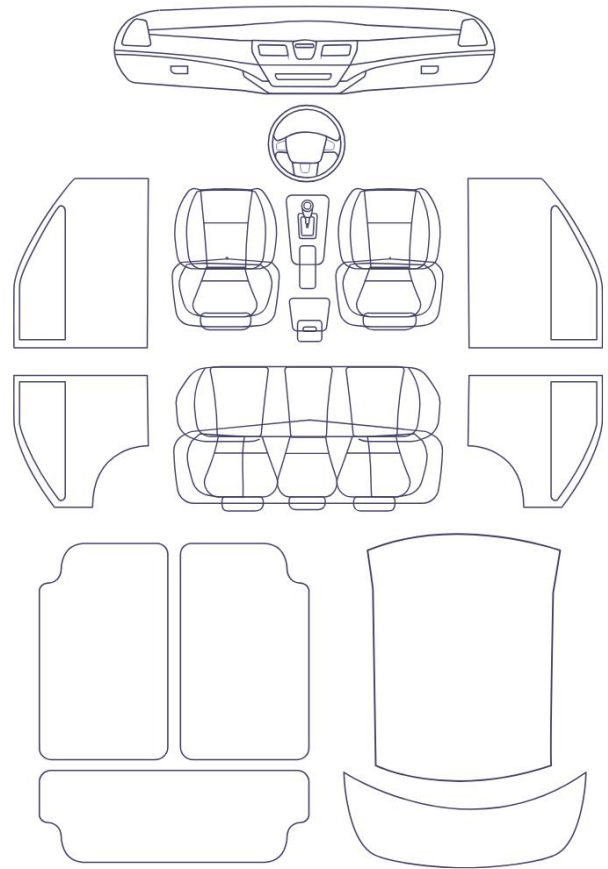
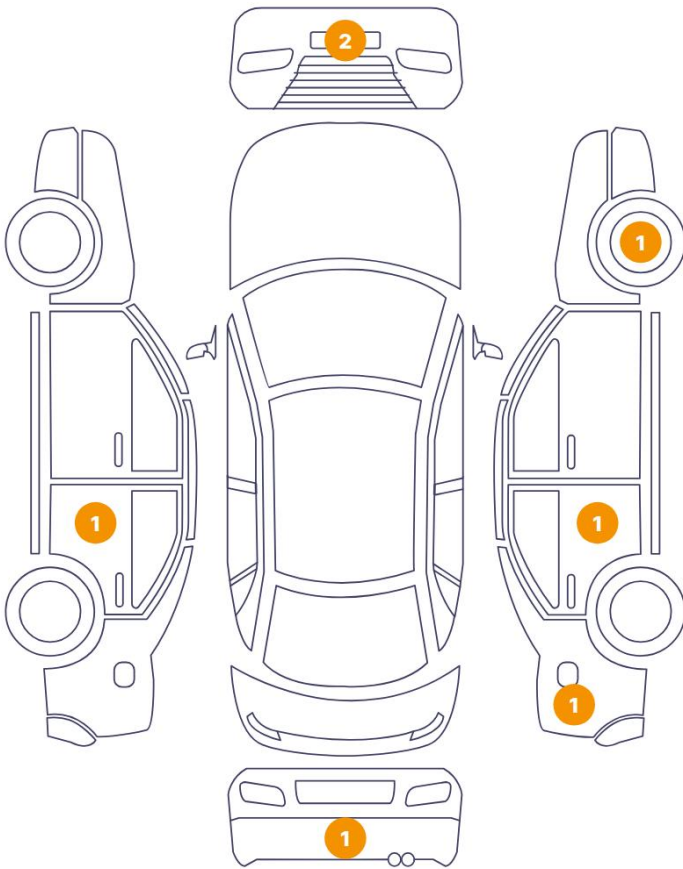
## Wheels & Tyres

Right Front Tyre Depth	6	Left Front Tyre Depth	6
Right Rear Tyre Depth	5	Left Rear Tyre Depth	5
Extra Wheel - 1 Tyre Depth	6	Extra Wheel - 2 Tyre Depth	6
Extra Wheel - 3 Tyre Depth	7	Extra Wheel - 4 Tyre Depth	7

## Cosmetic Damage

7 Schäden

0 Schäden

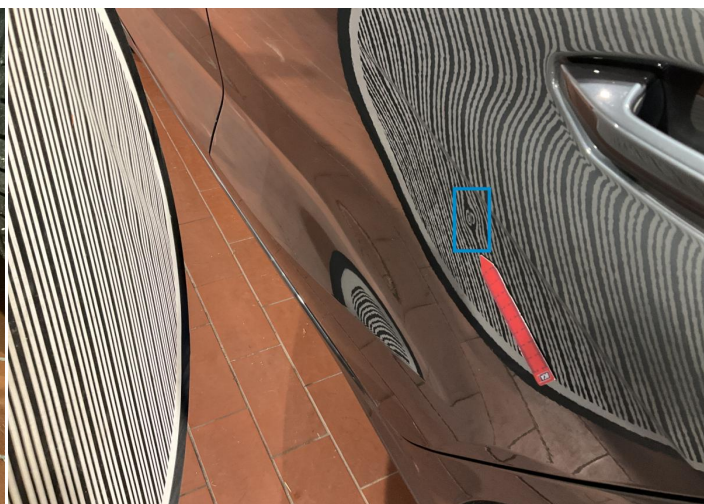


Component	Damage	Comments
1 Corner Bumper / Front Left	Paint / Scratch / Scuff	
2 Door / Back Left	Bodywork / Dent / Dent	
3 Bumper / Front	Bodywork / Dent / Dent	
4 Bumper / Back	Bodywork / Dent / Dent	
5 Side Panel / Back Right	Bodywork / Dent / Dent	
6 Door / Back Right	Bodywork / Dent / Dent	
7 Rim / Front Right	Paint / Stone Chip	





1. Corner Bumper / Front Left  
Paint / Scratch / Scuff -



2. Door / Back Left  
Bodywork / Dent / Dent -



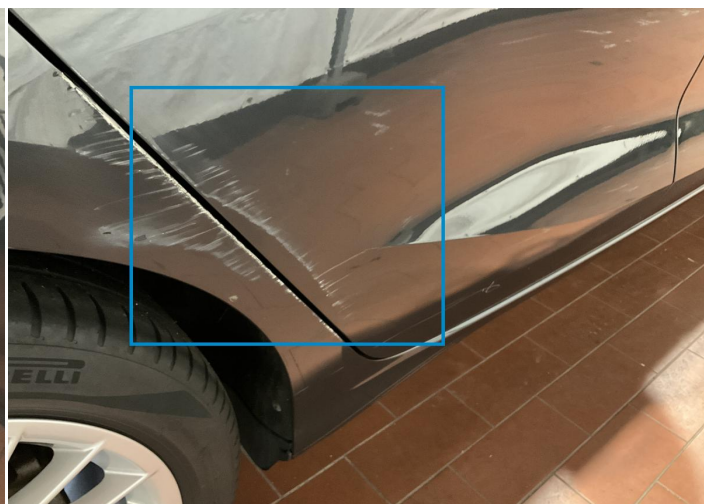
3. Bumper / Front  
Bodywork / Dent / Dent -



4. Bumper / Back  
Bodywork / Dent / Dent -



5. Side Panel / Back Right  
Bodywork / Dent / Dent -



6. Door / Back Right  
Bodywork / Dent / Dent -



7. Rim / Front Right  
Paint / Stone Chip -



## Mechanical Condition

### Control Lights

Display Defect	✓	Service Light	✓
ABS Warning Light	✓	ESP Fault/Traction Control Malfunction Light	✓
Airbag Warning Light	✓	Oil Pressure Warning Light	✓
Brake Warning Light	✓	Power Steering Warning Light	✓
Alternator / Battery	✓	No Dashboard Lights	✓
Tire Pressure Monitoring System	✓		

### Equipments Test

Central Locking	✓	Main & Spare Keys Functioning	✓
Electric Windows	✓	Navigation System	✓
Audio Equipment	✓	Parking Sensors / Cameras Functioning	✓
AC / Heating System	✓	Other Equipments	✓

### Engine

Engine Status / EML	✓	Engine Leak Visible	✓
Engine Starts	✓		

### Gearbox

Gear Box	✓
----------	---

### Levels

Brakes Fluid	✓	Coolant Fluid	✓
--------------	---	---------------	---

## Test Drive Inspection

---

### Steering Wheel

Steering | Noise / Anomaly ✓

### Engine

Engine Noise ✓ The Gears Scratch / Skip / Abnormal Operation ✓

Fume Quantity ✓ Power Loss ✓

### Brake

Brake System Anomaly ✓

### General

Test Driven Status Not Performed

✓ *No troubles detected, good condition or correct tests, according to vehicle age and mileage*

! *Damages or malfunction detected that requires repairs by the buyer*

NA *Not applicable*

☐ *Not tested*

### Disclaimer

---

*Please also note the "UserGuide condition report", which shows the scope of the vehicle description.*

[User Guide](#)