



Expertise

Protocol number: 41680379  
Order No. / Reference: 25223377  
Inspection date: 24 Sept 2025

Manufacturer: Audi  
VIN: WAUZZZGY4RA026179

Model: A3 35 TFSI Limousine S tronic



Vehicle details	
Manufacturer / Type / Model / Equipment	
Audi A3 35 TFSI Limousine S tronic	
Vehicle Identification number	WAUZZZGY4RA026179
Mileage (Read)	48,320 km
First registration	8 Sept 2023
Number of holders	1
Power / Engine displacement	110 kw / 1,498 ccm
Fuel type / Cylinder	Hybrid Petrol / E / 4
Gearbox / Number of gears	Automatic / 7
Type of drive	Front drive
Type of vehicle	Saloon car
Colour / colour code	Brillantschwarz Uni(Y9B)
Doors / Seats	4 / 5
Upholstery type	Cloth
Colour of upholstery	Grey



## Vehicle details

<b>Maintenance booklet / proof</b>	digital proof / complete	<b>Next maintenance in</b>	8,700 km
<b>Last maintenance on / at</b>	11/2024 at 28,392 km		
<b>Key is / should be</b>	2 / 2	<b>FZG documents</b>	ZB#2 (B) was available (copy), ZB#1 (S) was not available
		<b>Letter No.</b>	GY217227
<b>Previous damage / Accident</b>	Detectable	<b>Repainting</b>	Detectable
<b>Inspection conditions</b>	sufficient	<b>Lifting equipment / pit</b>	yes
<b>Test drive</b>	Performed	<b>Engine function test</b>	With complaint
<b>Manufacturer key number/ type code number</b>	0588 / BYD 00342		
<b>Emission standard</b>	EURO6;WLTP;AP;PI/CI; M, N1 I	<b>Fine dust sticker</b>	
<b>Permitted total weight</b>	1,880 kg	<b>Empty weight</b>	

## Tyres

### Mounted tyres

#	Tyre size	Type of tyre	Manufacturer	Tread depth
1)	205/55 R16 91V	Summer tyres on Light alloy	Nexen	5mm / 5mm
2)	205/55 R16 91V	Summer tyres on Light alloy	Nexen	6mm / 6mm

### Additional tyres

#	Tyre size	Type of tyre	Manufacturer	Tread depth
1)	205/55 R16 91H	Winter tyres on Light alloy	Pirelli	7mm / 6mm
2)	205/55 R16 91H	Winter tyres on Light alloy	Pirelli	7mm / 7mm

### Replacement

Typ	Tyre size	Type of tyre	Manufacturer	Tread depth
	Tirefit	Expiration date 07/2027		

**Legend:** Tread depth information for tires on the left is in the first place, for tires on the right is in the second place on the axle in the direction of travel



## Equipment

### Standard equipment

- Airbag for driver and front passenger
- Anti-lock braking system (ABS)
- Traction control ASR
- Audi pre sense front
- Evasion assistant and turning assistant
- Brake light, third
- Digital instrument cluster - fully digital instrument cluster in 10.25 inches
- Electronic differential lock (EDS)
- Chassis: Standard chassis
- Radio key (without Safe-Lock)
- Speed limitation system
- Heated rear window
- Child safety lock electrically operated
- Manual air conditioning
- Headrests (3) rear
- Paint finish: Uni
- Mild hybrid
- Gasoline particulate filter
- Wheel: Light alloy wheels - 16 inches - 5-double arm
- Tire pressure monitoring display
- Power steering, electromechanical
- Seat covers in fabric
- Lane Departure Warning
- 12 volt socket in the rear
- Glazing: Heat-insulating glazing tinted green
- Central locking with radio remote control
- Airbag: Front side airbags with head airbag system and front interaction airbag
- Audi connect emergency call & service m.connect remote & control
- Exterior mirror housings in body color
- Decorative strips in black glass look
- Electric auxiliary air heater
- Electromechanical parking brake
- Electronic Stabilization Control (ESC)
- Electric windows front and rear
- Floor mats front and rear
- Transmission: S tronic 7-speed
- Interior lighting
- Child seat attachment i-Size and Top Tether for the outer rear seats
- Front headrests
- Light and rain sensor
- Non-smoking version
- Parking assistant
- Radio: MMI Radio plus
- Tire repair kit
- 3-point automatic seat belts
- Seats: Folding rear seat backrest
- Start-stop system
- 12V socket
- Electronic immobilizer

### Extra equipment

- Adaptive Cruise Control (assists with acceleration, braking, and maintaining speed and distance. The adjustable speed limiter helps keep the driver from exceeding a preset maximum speed at speeds of approximately 30 km/h, e.g., within built-up areas. Audi pre sense front uses front radar to monitor the area in front of the vehicle within system limits and warns with visual and active signals to indicate a potentially dangerous situation.)
- Assistance package with MMI navigation
- Business package (USB ports with charging function in the rear - Audi connect navigation & infotainment plus - Audi phone box - Audi virtual cockpit plus - Smartphone interface (Android Auto and Apple CarPlay) - MMI navigation plus with MMI touch - Cruise control)
- Exterior mirrors electrically adjustable, heated and foldable, with automatic dimming on both sides (with integrated LED indicators and automatic curb detection for the passenger side mirror - mirror glass aspherical on the left, convex on the right - including heated windscreen washer nozzles)
- Airbags: Front and rear side airbags with head airbag system and front interaction airbag (The so-called interaction airbag deploys between the front seats. Within the system's limits, it offers protection for the driver and front passenger seat occupants in the event of a side impact. In the event of a side collision, this greatly mitigates the impact of the two front occupants on each other or, if driving alone, on the front passenger seat, and reduces the risk of injury.)
- Ambient lighting package plus (glove box lighting (bulb), LED trunk lighting right, roof module front/rear, including reading lights (LED), illuminated vanity mirror (LED), entry lights on the underside of the front doors (LED), footwell lighting front (LED), entry lights on the underside of the rear doors (white), dashboard contour lighting (multi-colored), ambient door lighting front/rear (multi-colored), contour lighting front/rear doors (multi-colored), center console storage compartment (multi-colored))



- Front seat heating (heats the seat and backrest center panel (standard fabric seats), otherwise the seat and backrest center panel and seat side bolsters - individually adjustable in 3 stages for the driver and front passenger side via the direct selection button on the climate control panel)
- Glazing: Sun protection glazing tinted (rear window, rear door and side windows tinted)
- Head-up display (On request, the speed and other driver-relevant information from optional equipment such as assistance systems and navigation, as well as warnings, are projected into the driver's direct field of vision. The multi-color display enables high-contrast imaging. The projection surface of the head-up display, which is discreetly integrated into the instrument panel, is adjustable in height and brightness.)
- Headliner in black fabric (including attachments in black)
- Interior mirror, automatically dimming, frameless
- ISOFIX child seat attachment points in the front, Top Tether, and i-Size for the outer rear seats (Holder for the practical attachment of i-Size and ISOFIX child seats on the front passenger seat and on the outer rear seats.)
- Matrix LED headlights, LED rear lights and headlight cleaning system (The Matrix LED headlights include: dynamic indicators, daytime running lights, low beam, high beam, position lights, cornering lights, all-weather lights (to reduce glare in poor visibility conditions), maneuvering lights (illumination of the front and side maneuvering area when reversing), motorway lights, automatic dynamic headlight range control, static cornering lights (supplements the side illumination in tight bends), dynamic lighting effects, the coming-home/leaving-home function.)
- Phone: Audi Phone Box (universal Bluetooth interface – convenient, integrated hands-free system – coupling antenna for connecting the mobile phone to the exterior antenna for improved reception quality – lower radiation in the vehicle interior – LTE support – charging via USB port or wireless charging (Qi standard) – forget-phone warning – charging status indicator in the MMI touch display – connection of a second mobile phone)
- Radio accessories: Bang & Olufsen Premium Sound System with 3D sound (surround sound reproduction via 15 high-performance speakers including subwoofer; 16-channel amplifier with a total output of 680 watts. The new, virtual 3D sound effect creates an immersive sound experience. This is generated by four speakers in the instrument panel, two speakers in the C-pillar, and the Fraunhofer Symphoria technology. The 3D sound can be generated with a variety of sources.)
- Radio accessories: USB Type-C charging cable for Type-C devices (USB adapter cable with Type-C connector for use with the Audi music interface, Audi smartphone interface, or the USB charging function. The USB Type-C socket in the vehicle supports 15 W. The Power Delivery function up to 60 watts is supported.)
- Anti-theft alarm system (monitoring of doors, hood, and trunk lid. The Safelock, linked to the door locks, prevents the doors from being opened from the inside once the vehicle has been locked with the key. The anti-theft alarm system includes: - switchable ultrasonic interior monitoring - warning via tilt angle sensor in the event of theft - battery-powered horn to prevent wiring tampering)
- Camera-based traffic sign recognition (Supports the driver by displaying traffic signs detected within the system's limits, such as speed limits, no-overtaking zones, and temporary speed limits that are within the detection range of the front camera. The traffic sign recognition is displayed automatically on the digital instrument cluster display or in the optional Audi virtual cockpit.)
- Decorative insert in aluminum spectrum dark (for inserts in the dashboard; accent surfaces in the instrument panel and center console in silk-effect paint platinum gray)
- Front center armrest (adjustable in inclination, longitudinally movable)
- Lane Change Warning (supports the driver, for example, in city traffic and when driving on multi-lane roads, by monitoring traffic behind the vehicle. Two radar sensors installed in the rear detect vehicles approaching from the side. The distance and speed difference can be measured and analyzed. If a situation is deemed critical for a lane change, a warning is issued via LED displays on the respective exterior mirror.)
- Panoramic glass roof (The glass element is opened and lowered electrically. The sun blinds are also conveniently operated. The panoramic glass roof can be operated from the outside using the remote key via the comfort opening and closing function. When opened, the panoramic glass roof improves the interior climate through efficient ventilation. An integrated wind deflector reduces wind noise.)
- Phone: LTE support for Audi phone box
- Phone: Smartphone interface in conjunction with MMI Navigation Plus with MMI touch (The smartphone interface (Android Auto and Apple CarPlay) connects your smartphone to your Audi and seamlessly displays your smartphone content directly on the MMI display. Navigation, telephony, music, and selected third-party apps can be conveniently controlled via the MMI touch display and voice control. The connection can be established either via a suitable USB cable or wirelessly.)
- Radio accessories: USB Type-C charging cable for Lightning devices (USB adapter cable with Type-C connector for use with the Audi music interface, Audi smartphone interface, or the USB charging function. The USB Type-C socket in the vehicle supports 15 W. The USB charging cable with Type-C connector for mobile devices with a Lightning socket supports the fast charging function from Apple iPhone 8 onwards.)
- Seat covers in Routine fabric (seat center panel in Routine fabric in black-silver or black-blue - seat side bolsters, headrests, front center armrest (if ordered) in plain black fabric)



- Seats: Folding rear seat backrest (three-piece), with center armrest (split 40 : 20 : 40 or fully foldable; with center armrest and cup holders)
- Storage and luggage compartment package (lockable glove compartment - driver's side storage compartment - storage net on the back of the front seat backrests - comfort cup holder - 12-volt socket in the trunk - luggage compartment net - second luggage compartment light on the left in LED (only for A3 Sportback))
- Seats: Front sports seats (with manual adjustment of seat height, seat fore/aft position, seat angle, backrest angle, and belt height - with visually integrated headrests on the front seats and with pronounced seat side bolsters for better lateral support when cornering)
- Steering wheel: 3-spoke leather steering wheel with multifunction plus and shift paddles (The height and reach of the steering wheel are manually adjustable. For convenient operation of the extensive standard and optional infotainment features, the steering wheel is equipped with twelve multifunction buttons. Shift paddles allow manual gear changes.)

### Brief expert findings

Documents submitted	At the time of the inspection, the registration certificate Part 2 (letter) was available, but the registration certificate Part 1 (certificate) was not. (Copy)
VIN comparison	The vehicle identification number (VIN) was read from the vehicle and its conformity with the submitted documents was verified during the inspection by the undersigned.
Inspection	The inspection conditions were sufficient for the assessment of the vehicle. Lifting equipment and a pit were available for examining the vehicle.
Test drive	A test drive was performed with the described vehicle.
Engine function test	An engine test run was performed, problem has been detected

### Value reducing factors

No.	Component group	Description
1	Front bumper	Front bumper - Stone chips - Paint
2	Mudguard - left side	Mudguard - left side (Schleifspuren) - Unprofessionally repaired - Paint
3	Bonnet	Bonnet - Stone chips - Paint

### Wear and tear

No.	Component group	Description
1	Door - front left side	Door - dent(s) - No deduction
2	Vehicle glazing	Windscreen - Stone chips - No deduction
3	Mudguard - right side	Mudguard - right side - Stone chips - No deduction
4	Headlight	Headlight - left side (außerhalb Streubereich) - Stone chips - No deduction

The vehicle shows signs of wear commensurate with its age and use.

### Previous damages

No.	Previous damage	Extent of damage (Net)
1	Front, Side - left, Provided by user / customer, from 21 Oct 2024	1.593,93 €

### Repainting

No.	Repainting
1	Mudguard - left side, Unprofessionally carried out, Invoice of repair done Non-existent

### Paint coat thickness measurement

Mudguard - left side	527 µm
----------------------	--------



## Order/Scope of order

The order was placed to prepare a sales report for the vehicle described. This includes the following:

- Description of core relevant information about the vehicle
- Documentation of equipment features  
(*Delivery by third-party service providers*)
- Documentation of damage, defects, missing parts
- Documentation of previous damage, unrepaired previous damage, repainting
- a brief visual or functional inspection of the equipment details if possible.  
(*Functional tests of driver assistance systems are not included in the scope of services!*)
- a photo documentation of the vehicle

## Basis for the order

This product is based on the Alphabet Fuhrpark GmbH guidelines for vehicle returns and valuations. The expert makes the explicit findings in each individual case objectively within the framework of the specified standards based on his or her own expertise.

The vehicle inspection takes place in a disassembled state.

Damage or defects that can only be detected during disassembly/diagnosis work or through advanced knowledge remain within the scope of the prognosis risk. An extended risk exists for concealed defects caused by fraudulent deception and not identifiable by the expert.

Damage or defects resulting from normal use or wear and tear of the vehicle will be accepted according to the applicable standard.

There was no explicit identification or monetary consideration of the expected features within the product.

Features which in their nature and severity slightly exceed normal use but do not constitute unacceptable damage will be documented and identified under signs of use if necessary.

Damage or defects which, according to the underlying standard, can no longer be attributed to normal use or wear and tear are listed in the product under "Depreciating Factors".

Depending on the product specification, a monetary ID can be provided. If this takes place, the costs can be 100% d or pro rata depending on the vehicle's age and mileage.

## Previous damages

According to available information previous damages were repaired at the vehicle. Traces of repairs, which allow conclusions about the area of repair, were not recognizable during the inspection.

## Comments

- Winterradsatz ist kein Bestandteil des Auslieferumfangs





Figure 1: Diagonal front (left)



Figure 2: Diagonal front (right)



Figure 3: Diagonal rear (left)



Figure 4: Diagonal rear (right)



Figure 5: Interior - front



Figure 6: Interior - rear





Figure 7: Instrument cluster



Figure 8: Instrument panel



Figure 9: Interior 360° view



Figure 10: Cargo area

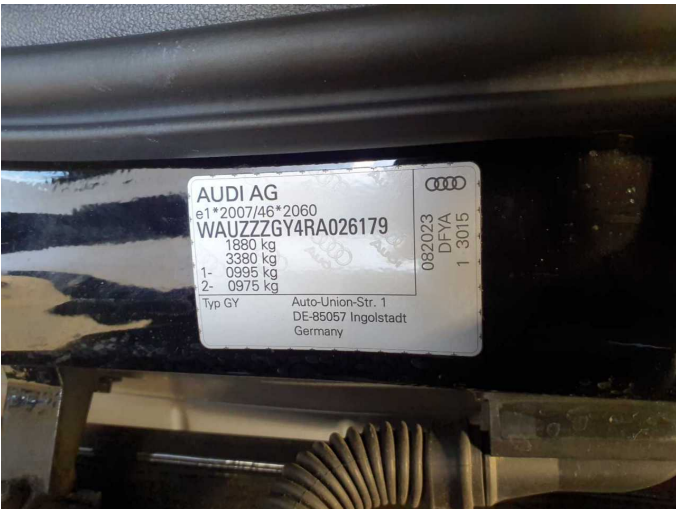


Figure 11: VIN



Figure 12: Mounted tyres



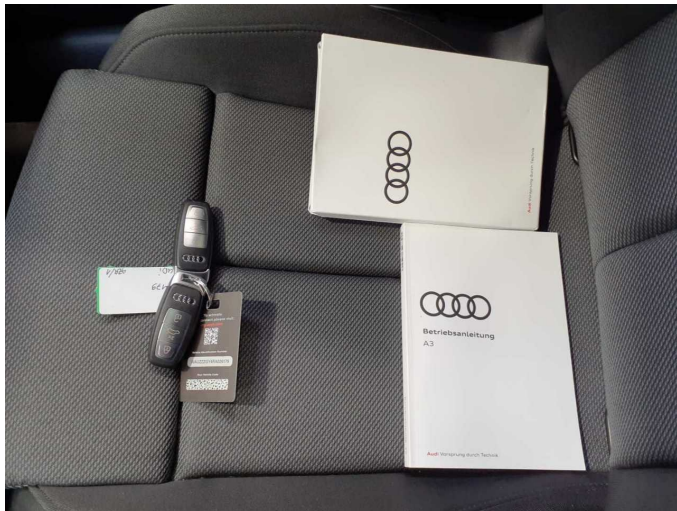


Figure 13: Documents



Figure 14: Documents



Figure 15: Additional tyres



Figure 16: Navigation

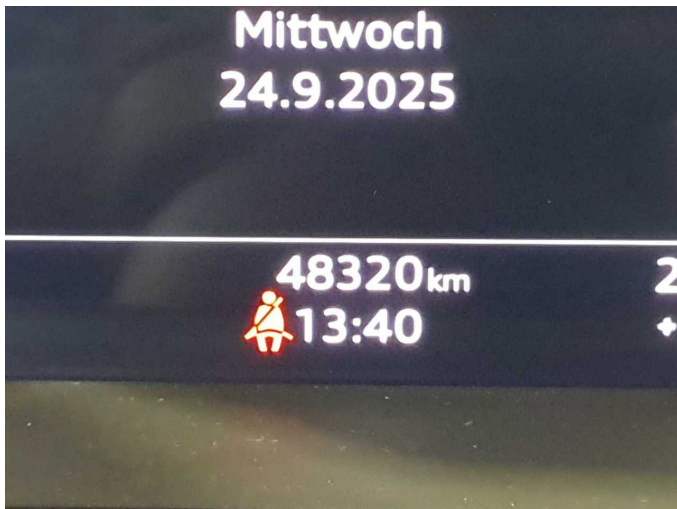


Figure 17: Misc.



Figure 18: Misc.





Figure 19: Misc.



Figure 20: Misc.



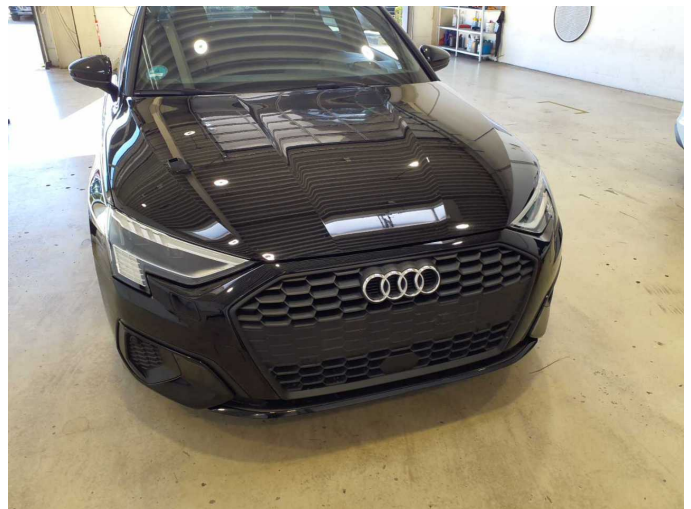
Figure 21: Misc.



Figure 22: Misc.



Figure 23: Misc.



Damage 1: Front bumper: Front bumper - Stone chips - Paint





**Damage 1:** Front bumper: Front bumper - Stone chips - Paint



**Damage 1:** Front bumper: Front bumper - Stone chips - Paint



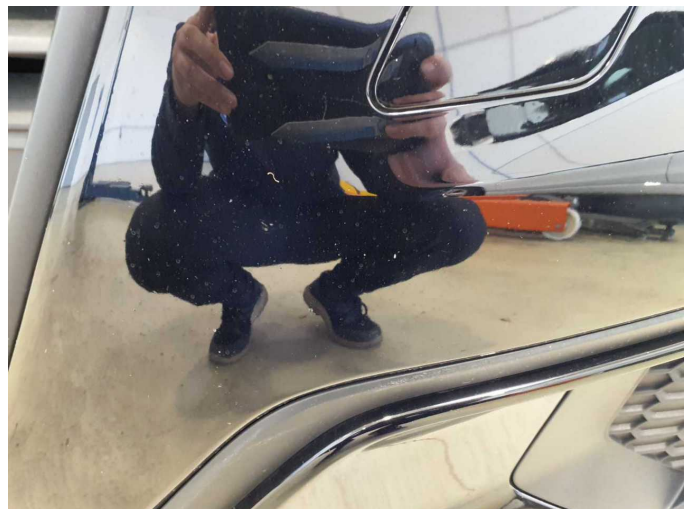
**Damage 1:** Front bumper: Front bumper - Stone chips - Paint



**Damage 1:** Front bumper: Front bumper - Stone chips - Paint



**Damage 1:** Front bumper: Front bumper - Stone chips - Paint



**Damage 1:** Front bumper: Front bumper - Stone chips - Paint





**Damage 2:** Mudguard - left side: Mudguard - left side (Schleifspuren) - Unprofessionally repaired - Paint



**Damage 2:** Mudguard - left side: Mudguard - left side (Schleifspuren) - Unprofessionally repaired - Paint



**Damage 2:** Mudguard - left side: Mudguard - left side (Schleifspuren) - Unprofessionally repaired - Paint



**Damage 2:** Mudguard - left side: Mudguard - left side (Schleifspuren) - Unprofessionally repaired - Paint



**Damage 2:** Mudguard - left side: Mudguard - left side (Schleifspuren) - Unprofessionally repaired - Paint



**Damage 3:** Bonnet: Bonnet - Stone chips - Paint

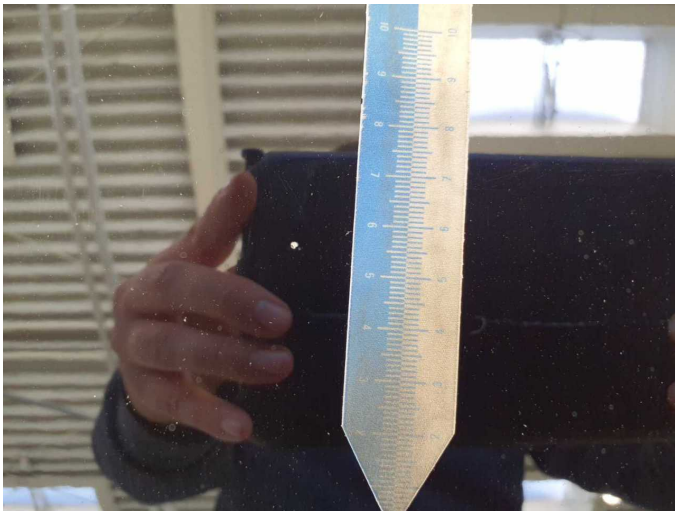




**Damage 3:** Bonnet: Bonnet - Stone chips - Paint



**Damage 3:** Bonnet: Bonnet - Stone chips - Paint



**Damage 3:** Bonnet: Bonnet - Stone chips - Paint



**Damage 3:** Bonnet: Bonnet - Stone chips - Paint



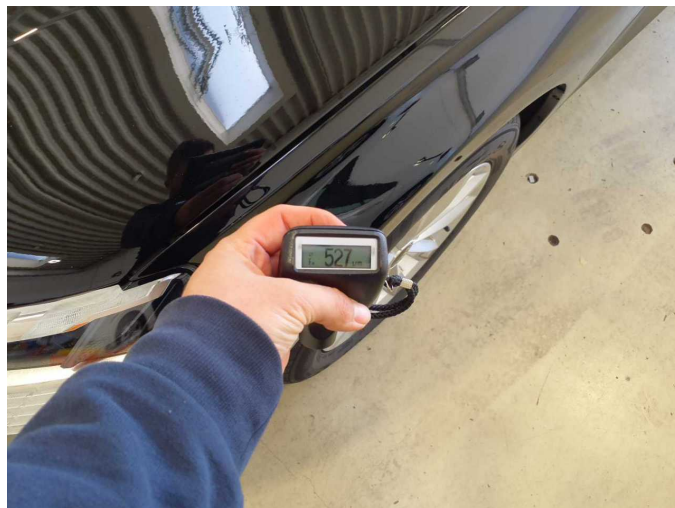
**Damage 3:** Bonnet: Bonnet - Stone chips - Paint



**Wear and tear 4:** Headlight: Headlight - left side (außerhalb Streubereich) - Stone chips - No deduction



**Wear and tear 4:** Headlight: Headlight - left side (außerhalb Streubereich) - Stone chips - No deduction



**Repainting 1:** Mudguard - left side



**Repainting 1:** Mudguard - left side





# Wartungshistorie

(gemäß Auftraggeber Informationen)

Fahrgestellnummer: WAUZZZGY4RA026179  
Hersteller / Modell: AUDI AUDI A3 35 TFSI Limousine S tronic

Datum	KM-Stand	Beschreibung
22.08.2025	47.271	Bremsflüssigkeit; Bremsflüssigkeit ern
13.11.2024	28.392	Motoröl b. Wartung; Ölfilter ern; Regelwartungsdienst; Wartung Sonstiges