



AUDI A3

A3 45 TFSIe Sportback S tronic

VIN NO WAUZZZGY1MA119945
Registration Number Y1MA119945



MOT Date



Last Service



Number of Owners



Last Service Mileage



Number of Keys



First Registration Date



Odometer Reading



Country First Registered



Inspection Report Summary

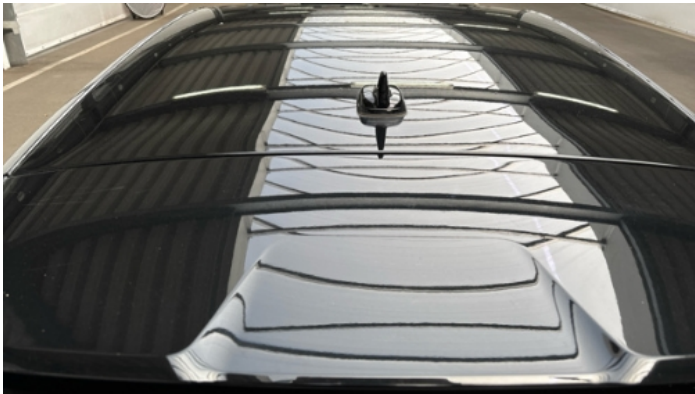
Customer	BCA Online	Report Number	P20250808091124
Inspection Date / Place	2025-08-08 / BCA Heidenheim	Cosmetic Grade	3

Vehicle Summary

Vehicle Condition	Runner	VAT Type	Qualifying
Fuel Type	Plug - in Hybrid Electric Vehicle Petrol	Road Worthy	Yes
Colour	Black	Engine Size (cc)	1395
Engine Size	1.4	No of Doors	5
Body Type	Stationwagon / Estate	Drive Train	Front
Seat Colour		No of Seats	5
Seat Covering Name		Seat Covering	Cloth
Charging Cables	OUC + Type 2	NEDC CO2 Rating (q/km)	29
Gearbox Type	Automatic		

Vehicle History & Documents

Service Book Available	Missing	Next Service Mileage	km
Previous Usage		Imported	No
Manufacturer Warrenty			







Equipment

Tinted Glass	Airbag Status	AndroidAuto	AppleCarPlay
Cruise control	Digitaldashboard	Heated wing mirrors	Remote central locking
Split folding rear seats	Electrically folding wing mirrors	LED Headlamps	Rear parking sensors
USB Socket	Alloys wheels	Anti-lock braking	Bluetooth telephone interface
Digital Radio	Front parking sensors	Remote adjusting wing mirrors	Satellite navigation
Stability control	Leather steering wheel	Radio	

Equipment Details

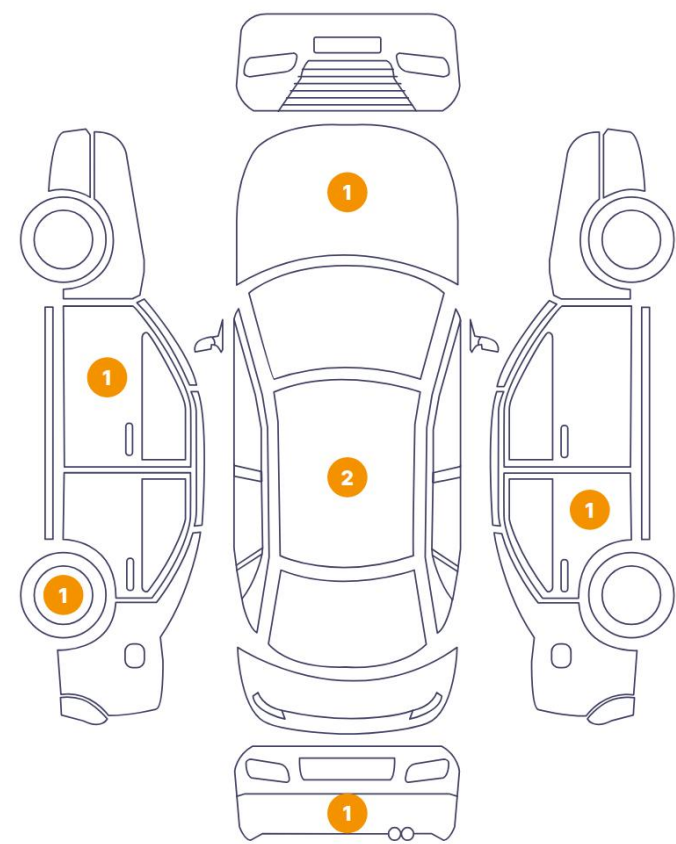
Air Conditioning	Dual Zone Climate Control	Alloy Wheel Size	17
Extra Wheel / Tyre Set	Winter Tyres - Alloy	Seat Heating	Front

Wheels & Tyres

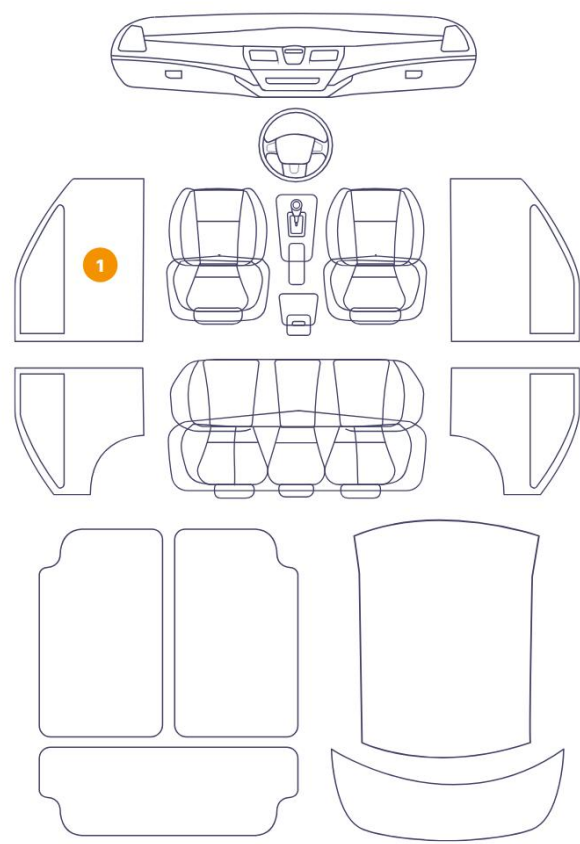
Right Front Tyre Depth	5	Left Front Tyre Depth	5
Right Rear Tyre Depth	6	Left Rear Tyre Depth	6
Extra Wheel - 1 Tyre Depth	7	Extra Wheel - 2 Tyre Depth	7
Extra Wheel - 3 Tyre Depth	7	Extra Wheel - 4 Tyre Depth	7

Cosmetic Damage

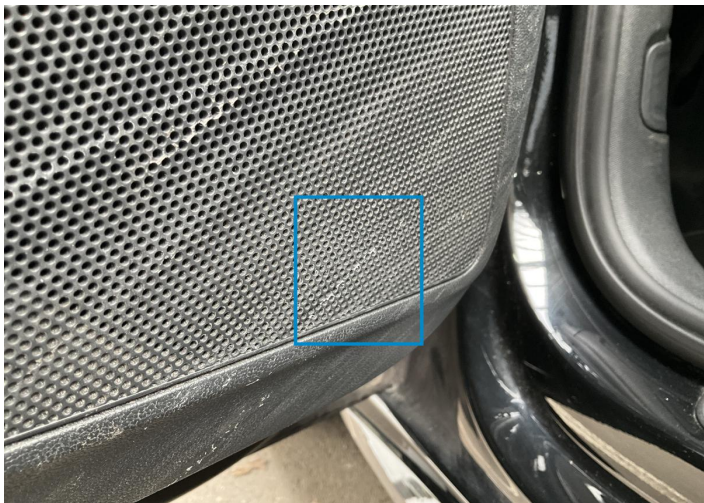
7 Schäden



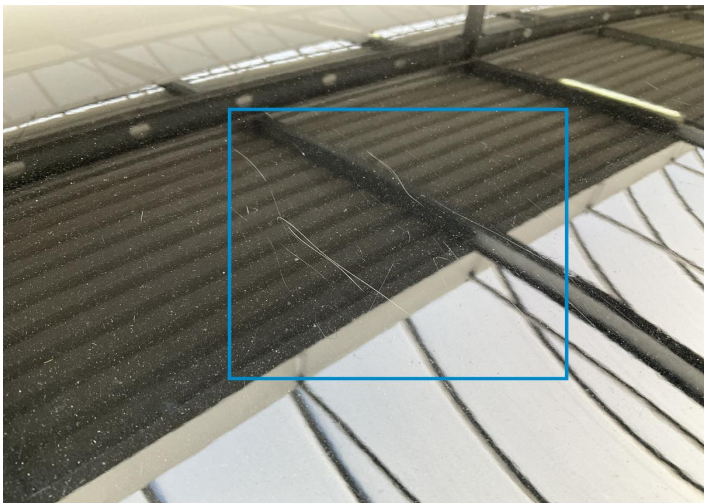
1 Schäden



Component		Damage	Comments
1	Panel Filling / Front Left	Interior / Scraped	
2	Roof	Paint / Scratch / Scuff	
3	Roof	Paint / Scratch / Scuff	
4	Rim / Back Left	Out of Bodywork / Scratch	
5	Hood	Paint / Stone Chip	
6	Door / Back Right	Paint / Scratch / Line	
7	Bumper / Back	Paint / Scratch / Scuff	
8	Door Joint / Front Left Top	Bodywork / Assembly	



1. Panel Filling / Front Left
Interior / Scraped -



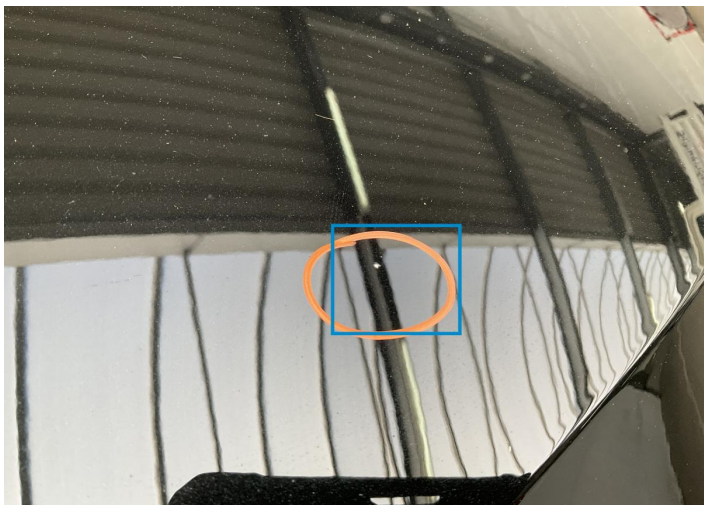
2. Roof
Paint / Scratch / Scuff -



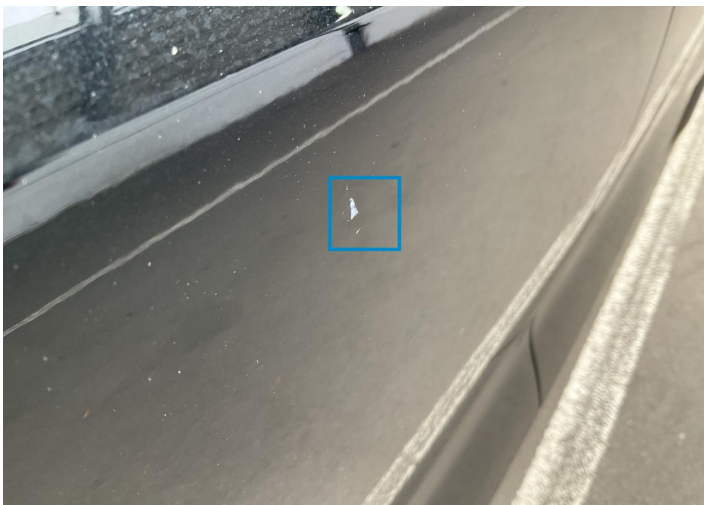
3. Roof
Paint / Scratch / Scuff -



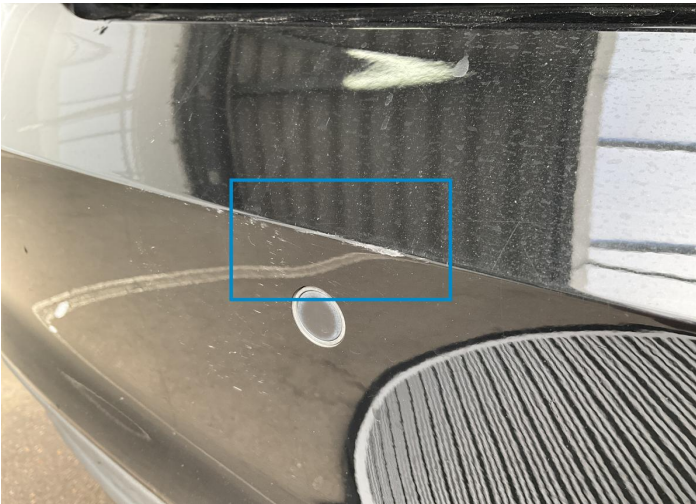
4. Rim / Back Left
Out of Bodywork / Scratch -



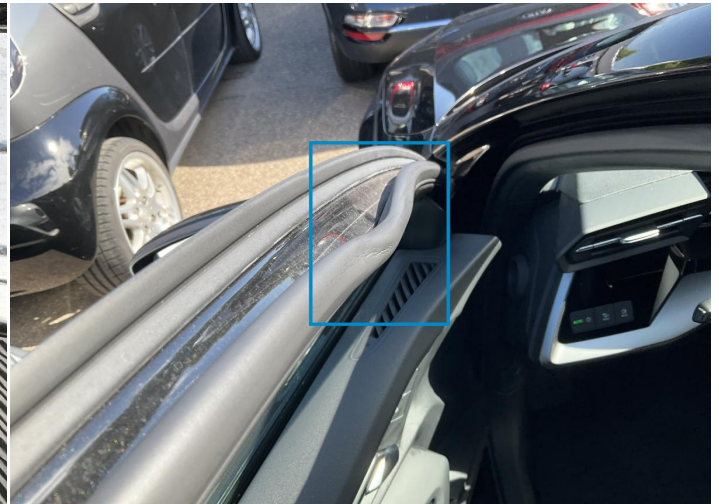
5. Hood
Paint / Stone Chip -



6. Door / Back Right
Paint / Scratch / Line -



7. Bumper / Back
Paint / Scratch / Scuff -



8. Door Joint / Front Left Top
Bodywork / Assembly -

Mechanical Condition

Control Lights

Service Light	✓	ABS Warning Light	✓
ESP Fault/Traction Control Malfunction Light	✓	Airbag Warning Light	✓
Oil Pressure Warning Light	✓	Brake Warning Light	✓
Power Steering Warning Light	✓	Alternator / Battery	✓
No Dashboard Lights	✓	Display Defect	✓

Equipments Test

Central Locking	✓	Electric Windows	✓
Navigation System	✓	Audio Equipment	✓
Parking Sensors / Cameras Functioning	✓	AC / Heating System	✓

Engine

Engine Status / EML	✓	Engine Leak Visible	✓
Engine Starts	✓		

Gearbox

Gear Box	✓
----------	---

Hybrid/EV

Charge Lead Condition	✓	Charge Port Condition	✓
Hybrid System Fault	✓		

Levels

Brakes Fluid	✓	Coolant Fluid	✓
--------------	---	---------------	---

Test Drive Inspection

Steering Wheel


Steering | Noise / Anomaly 





Engine

Engine Noise  The Gears Scratch / Skip / Abnormal Operation 

Fume Quantity  Power Loss 

General

Test Driven Status 

-  No troubles detected, good condition or correct tests, according to vehicle age and mileage
-  Damages or malfunction detected that requires repairs by the buyer
-  Not applicable
-  Not tested

Disclaimer

Please also note the "UserGuide condition report", which shows the scope of the vehicle description. [User Guide](#)