



# AUDI Q5

## Q5 50 TFSIe quattro S tronic

VIN NO WAUZZZFY9N2024210  
Registration Number Y9N2024210



MOT Date

2027-05-01

Last Service



Number of Owners

1

Last Service Mileage



Number of Keys

2

First Registration Date

2022-02-01

Odometer Reading

91451 km

Country First Registered

Germany

### Inspection Report Summary

Customer	BCA Online	Report Number	P20250922160649
Inspection Date / Place	2025-09-22 / BCA Neuss	Cosmetic Grade	4

### Vehicle Summary

Vehicle Condition	Runner	VAT Type	Qualifying
Fuel Type	Plug - in Hybrid Electric Vehicle Petrol	Road Worthy	Yes
Colour	Green	Engine Size (cc)	1984
Engine Size	2.0	No of Doors	5
Body Type	SUV	Drive Train	All-Wheel-Drive permanent
Seat Colour		No of Seats	5
Seat Covering Name	Schwarz	Seat Covering	Cloth/Leather
Charging Cables	OUC + Type 2	NEDC CO2 Rating (q/km)	41
Gearbox Type	Automatic		

### Vehicle History & Documents

Service Book Available	Missing	Next Service Mileage	km
Previous Usage		Imported	No
Manufacturer Warranty			













## Equipment

Tinted Glass	Airbag Status	Ambient lighting	Bluetooth telephone interface
Digital Radio	Front parking sensors	Remote adjusting wing mirrors	Reversing Camera
Satellite navigation	Sunroof	Electrically folding wing mirrors	Leather steering wheel
Radio	Tow ball	Alloys wheels	Anti-lock braking
Cruise control	Digital dashboard	Heated wing mirrors	Remote central locking
Roof rails	Stability control	Electrically adjustable seats	Electric tailgate
LED Headlamps	Rear parking sensors		

## Equipment Details

Tow Ball Type	Pivoted	Air Conditioning	Three Zone Climate Control
Alloy Wheel Size	20	Seat Heating	Front
Sunroof Type	Opening Panoramic		

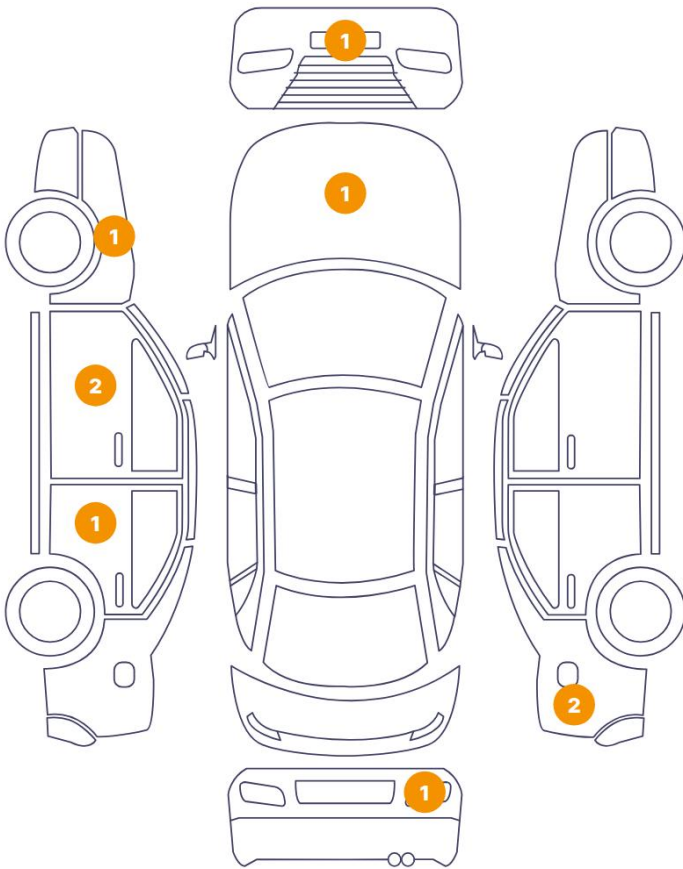
## Wheels & Tyres

Right Front Tyre Depth	5	Left Front Tyre Depth	5
Right Rear Tyre Depth	5	Left Rear Tyre Depth	5
Extra Wheel - 1 Tyre Depth	7	Extra Wheel - 2 Tyre Depth	7
Extra Wheel - 3 Tyre Depth	6	Extra Wheel - 4 Tyre Depth	6

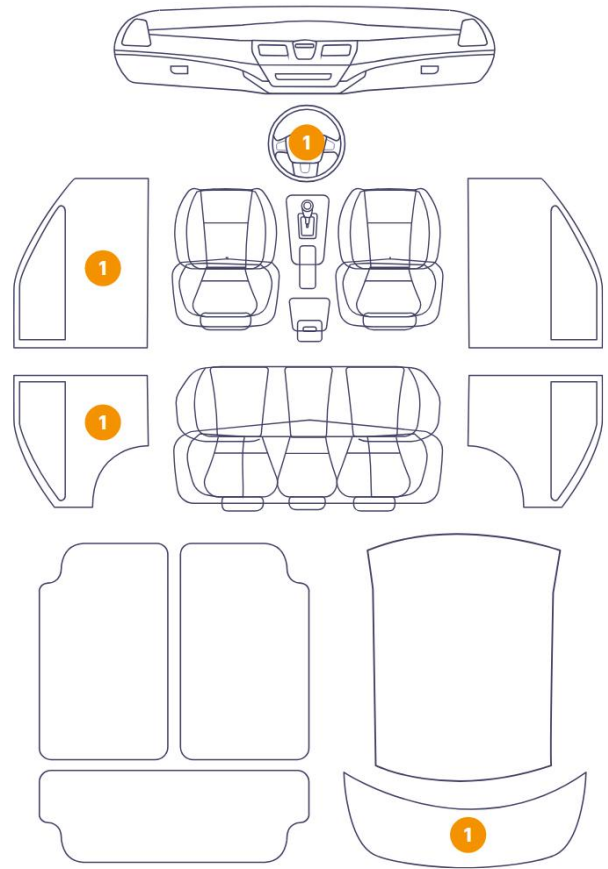


## Cosmetic Damage

9 Schäden



4 Schäden

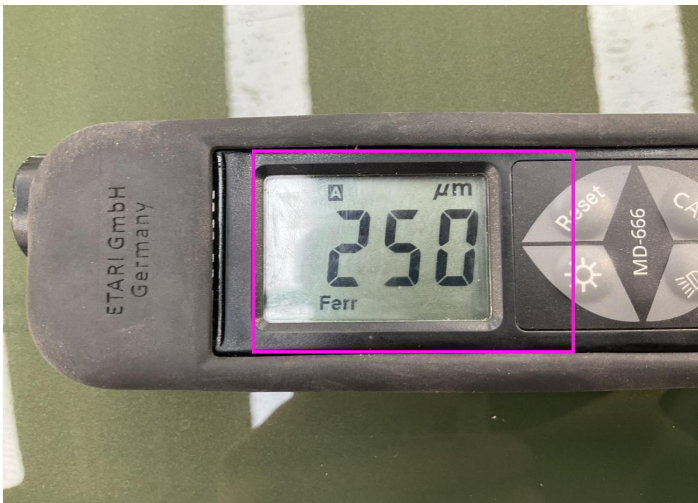


Component	Damage	Comments
1 Wing Expander / Front Left	Paint / Poor Previous Repair	
2 Door / Front Left	Paint / Poor Previous Repair	
3 Hood	Bodywork / Dent / Dent	
4 Bumper / Front	Paint / Scratch / Scuff	
5 Door / Front Left	Paint / Scratch / Scuff	
6 Panel Filling / Front Left	Interior / Scratched	
7 Door / Back Left	Paint / Scratch / Scuff	
8 Panel Filling / Back Left	Interior / Scratched	
9 Back Light / Right	Glass Break	
10 Tailgate Upholstery / Back	Interior / Scratched	
11 Side Panel / Back Right	Paint / Scratch / Scuff	
12 Side Panel / Back Right	Bodywork / Dent / Deformation	

13 Steering Wheel / Front

Interior / Scratched

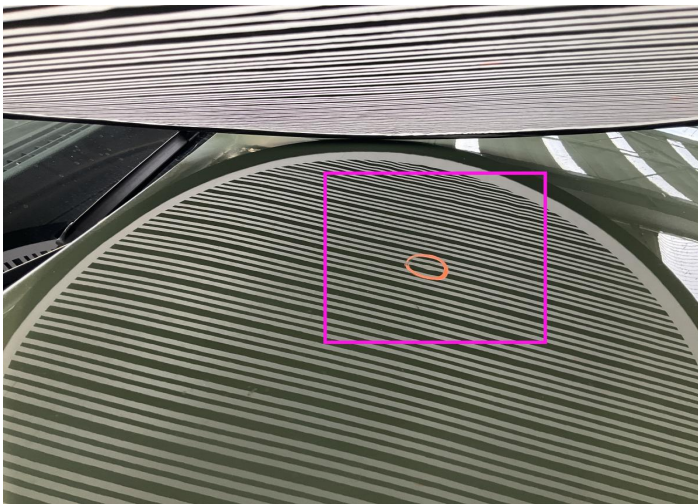




1. Wing Expander / Front Left  
Paint / Poor Previous Repair -



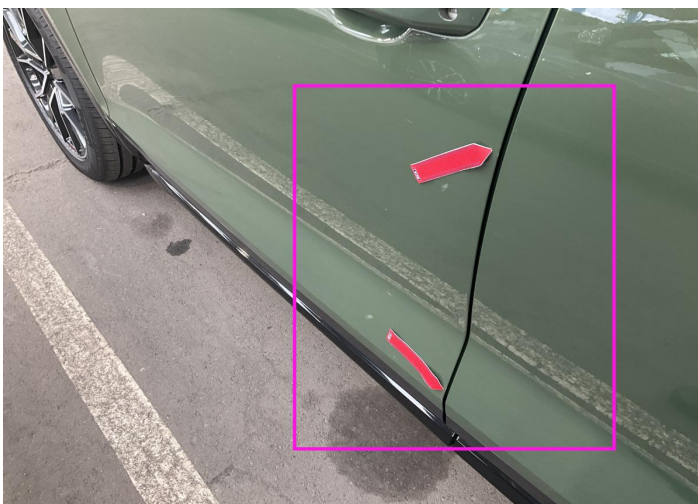
2. Door / Front Left  
Paint / Poor Previous Repair -



3. Hood  
Bodywork / Dent / Dent -



4. Bumper / Front  
Paint / Scratch / Scuff -



5. Door / Front Left  
Paint / Scratch / Scuff -



6. Panel Filling / Front Left  
Interior / Scratched -





7. Door / Back Left  
Paint / Scratch / Scuff -



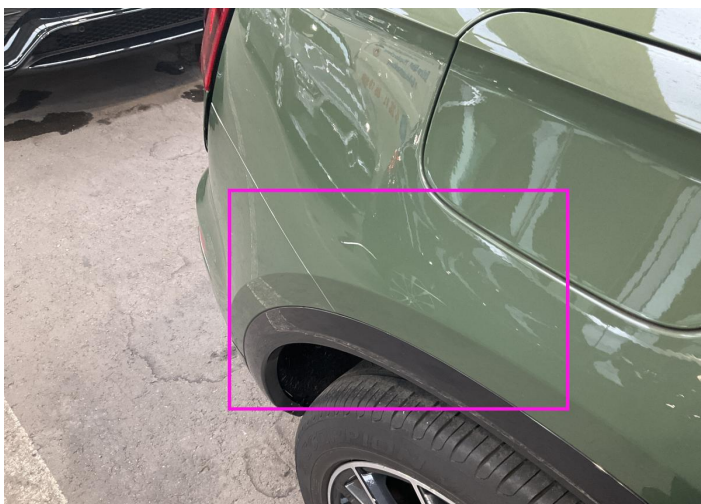
8. Panel Filling / Back Left  
Interior / Scratched -



9. Back Light / Right  
Glass Break -



10. Tailgate Upholstery / Back  
Interior / Scratched -



11. Side Panel / Back Right  
Paint / Scratch / Scuff -



12. Side Panel / Back Right  
Bodywork / Dent / Deformation -



13. Steering Wheel / Front Interior / Scratched -



## Mechanical Condition

### Control Lights

Display Defect	✓	Service Light	✓
ABS Warning Light	✓	ESP Fault/Traction Control Malfunction Light	✓
Airbag Warning Light	✓	Oil Pressure Warning Light	✓
Brake Warning Light	✓	Power Steering Warning Light	✓
Alternator / Battery	✓	All - wheel Drive	✓
No Dashboard Lights	✓	Tire Pressure Monitoring System	✓

### Equipments Test

Central Locking	✓	Main & Spare Keys Functioning	✓
Electric Windows	✓	Navigation System	✓
Audio Equipment	✓	Parking Sensors / Cameras Functioning	✓
AC / Heating System	✓	Other Equipments	✓

### Engine

Engine Status / EML	✓	Engine Leak Visible	✓
Engine Starts	✓		

### Gearbox

Gear Box	✓
----------	---

### Hybrid/EV

Charge Lead Condition	✓	Charge Port Condition	✓
Hybrid System Fault	✓		

### Levels

Brakes Fluid	✓	Coolant Fluid	✓
--------------	---	---------------	---

## Test Drive Inspection

---

### Steering Wheel

Steering | Noise / Anomaly ✓

### Engine

Engine Noise ✓ The Gears Scratch / Skip / Abnormal Operation ✓

Fume Quantity ✓ Power Loss ✓

### Brake

Brake System Anomaly ✓

### General

Test Driven Status ✓

✓ *No troubles detected, good condition or correct tests, according to vehicle age and mileage*

! *Damages or malfunction detected that requires repairs by the buyer*

NA *Not applicable*

☐ *Not tested*

### Disclaimer

---

*Please also note the "UserGuide condition report", which shows the scope of the vehicle description.*

[User Guide](#)