



AUDI Q5
Q5 45 TFSI quattro S tronic

VIN NO WAUZZZFY7N2089766
Registration Number Y7N2089766



MOT Date	Number of Owners	Number of Keys	Odometer Reading
-	1	2	64897 km
Last Service	Last Service Mileage	First Registration Date	Country First Registered
-	-	2022-07-06	-

Inspection Report Summary

Customer	BCA Online	Report Number	P20250919112500
Inspection Date / Place	2025-09-19 / Extern	Cosmetic Grade	3

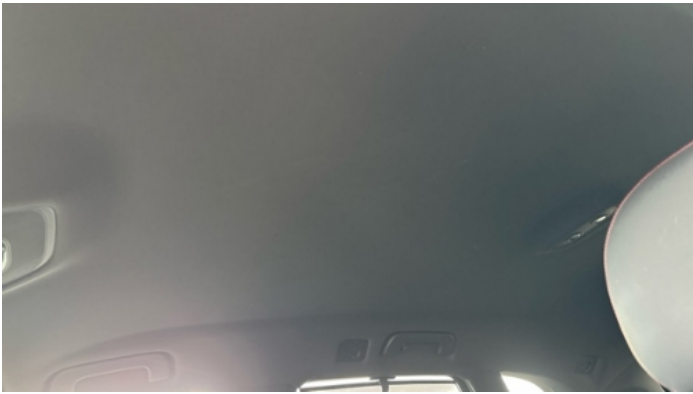
Vehicle Summary

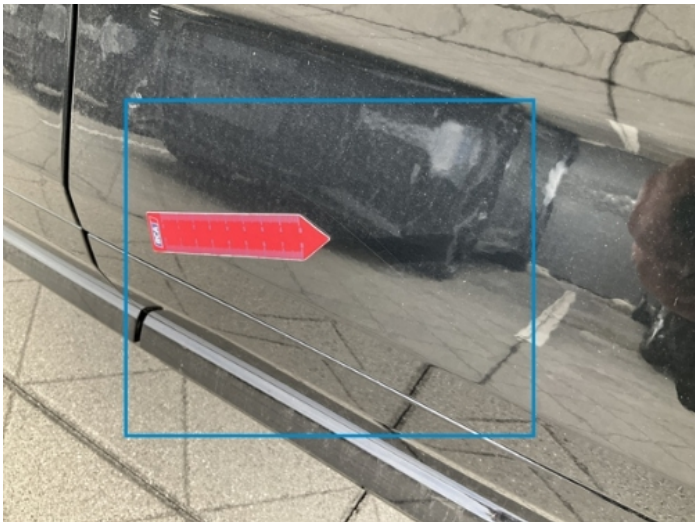
Vehicle Condition	Runner	VAT Type	Margin
Fuel Type	Petrol	Road Worthy	Yes
Colour	Black	Engine Size (cc)	1984
Engine Size	2.0	No of Doors	5
Body Type	SUV	Drive Train	All-Wheel-Drive permanent
Seat Colour		No of Seats	5
Seat Covering Name	Schwarz	Seat Covering	Cloth/Synthetic Leather
Charging Cables		WLTP CO2 Emissions	
Gearbox Type	Automatic		

Vehicle History & Documents

Service Book Available	Missing	Next Service Mileage	km
Previous Usage		Imported	No
Manufacturer Warrenty			







Equipment

Tinted Glass	Trafficsignrecognition	USB Socket	Adaptive Headlamps
Airbag Status	Ambientlighting	Bluetooth telephone interface	Digitaldashboard
Front parking sensors	Heated wing mirrors	Parking Assistance	Remote central locking
Satellite navigation	Stability control	Electrically folding wing mirrors	Emergencybrakeassist
Laneassist	LED Headlamps	Rain sensitive windscreen wipers	Rear sunblind
Tow ball	Trip Computer	360°camera	Adaptivecruisecontrol
Alloys wheels	Anti-lock braking	Digital Radio	Enhanced speaker system
Headlamp wash/wipe	Highbeamassist	Remote adjusting wing mirrors	Roof rails
Split folding rear seats	Distancewarningsystem	Electrictailgate	Keyless Entry
Leather steering wheel	Radio	Rear parking sensors	Driver Seat Electrically adjustable

Equipment Details

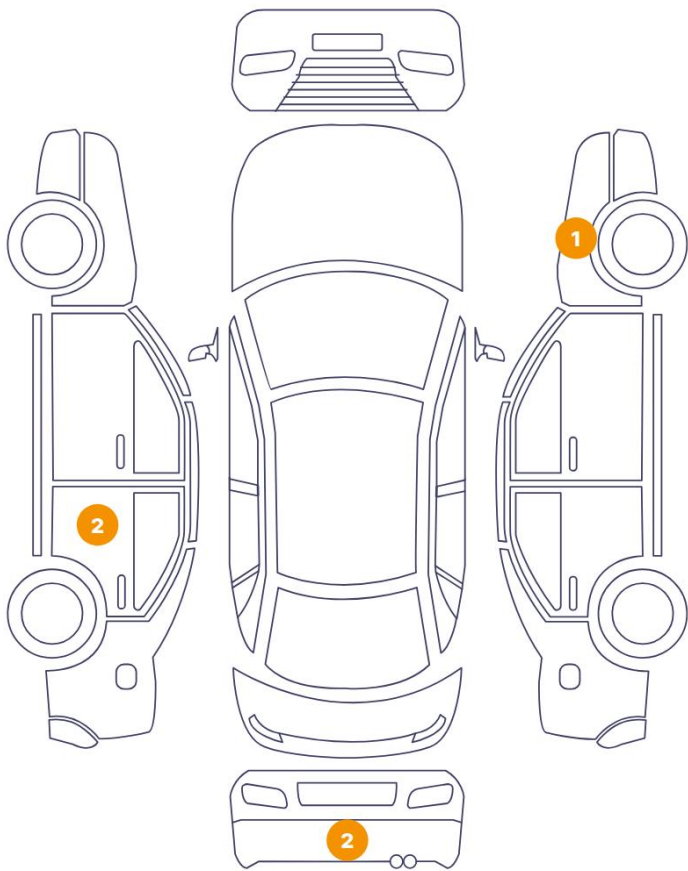
Tow Ball Type	Pivoted	Air Conditioning	Three Zone Climate Control
Alloy Wheel Size	21	Enhanced Speaker System	Bang & Olufsen
Seat Heating	Front		

Wheels & Tyres

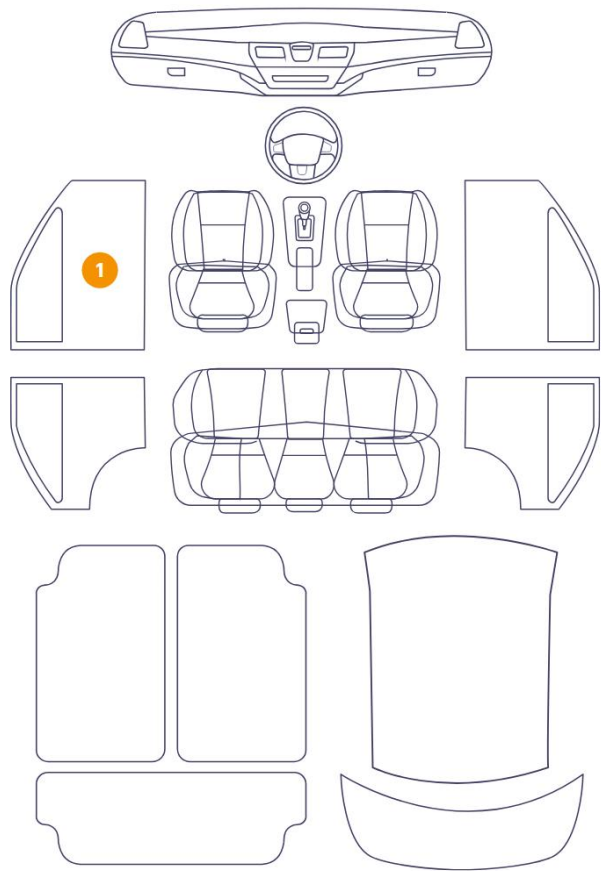
Right Front Tyre Depth	2	Left Front Tyre Depth	2
Right Rear Tyre Depth	3	Left Rear Tyre Depth	3

Cosmetic Damage

5 Schäden



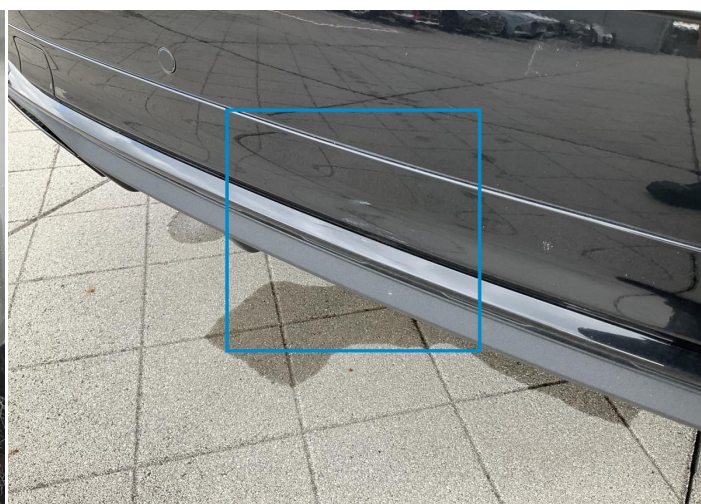
1 Schäden



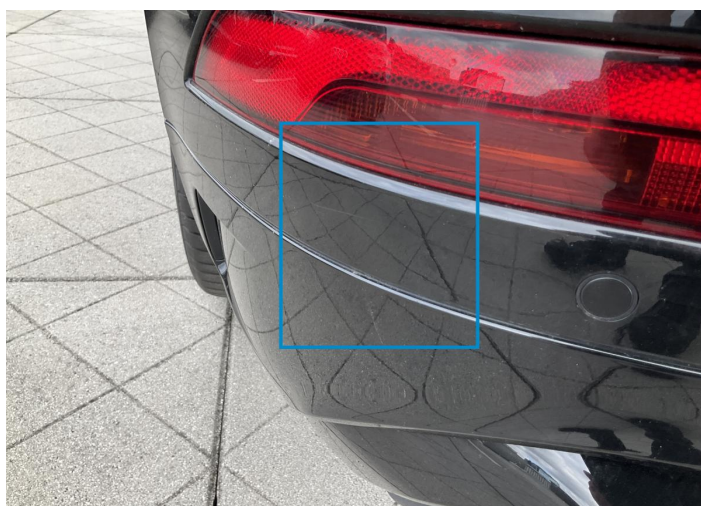
Component	Damage	Comments
1 Fender / Front Right	Paint / Poor Previous Repair	
2 Bumper / Back	Paint / Scratch / Scuff	
3 Bumper / Back	Paint / Scratch / Scuff	
4 Door / Back Left	Paint / Scratch / Scuff	
5 Door / Back Left	Paint / Scratch / Scuff	
6 Panel Filling / Front Left	Interior / Scratched	



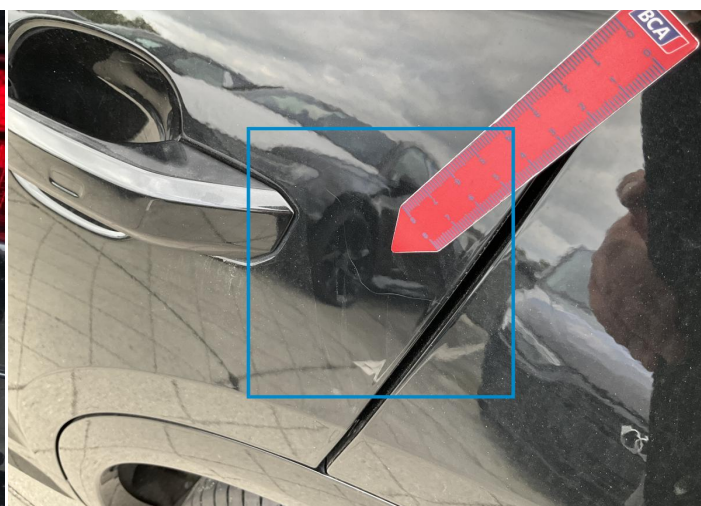
1. Fender / Front Right
Paint / Poor Previous Repair -



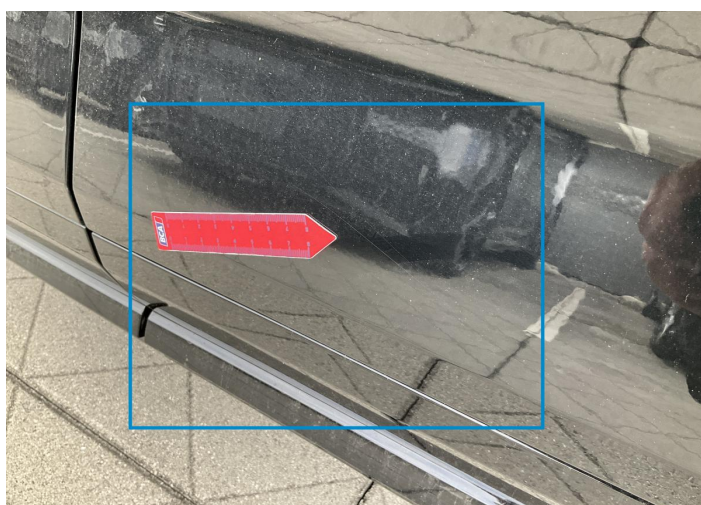
2. Bumper / Back
Paint / Scratch / Scuff -



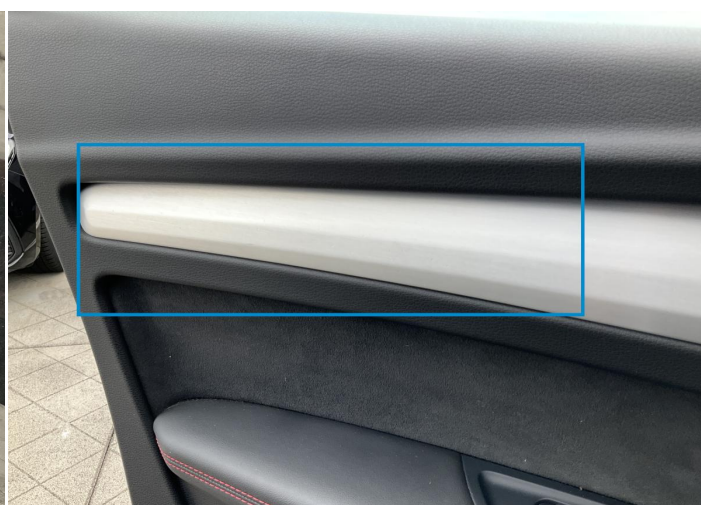
3. Bumper / Back
Paint / Scratch / Scuff -



4. Door / Back Left
Paint / Scratch / Scuff -



5. Door / Back Left
Paint / Scratch / Scuff -



6. Panel Filling / Front Left
Interior / Scratched -

Mechanical Condition

Control Lights

Service Light	✓	ABS Warning Light	✓
ESP Fault/Traction Control Malfunction Light	✓	Airbag Warning Light	✓
Oil Pressure Warning Light	✓	Brake Warning Light	✓
Power Steering Warning Light	✓	Alternator / Battery	✓
All - wheel Drive	✓	No Dashboard Lights	✓
Tire Pressure Monitoring System	✓	Display Defect	✓

Equipments Test

Central Locking	✓	Main & Spare Keys Functioning	✓
Electric Windows	✓	Navigation System	✓
Audio Equipment	✓	Parking Sensors / Cameras Functioning	✓
AC / Heating System	✓	Other Equipments	✓

Engine

Engine Status / EML	✓	Engine Leak Visible	✓
Engine Starts	✓		

Gearbox

Gear Box	✓
----------	---

Levels

Brakes Fluid	✓	Coolant Fluid	✓
--------------	---	---------------	---

Test Drive Inspection

Steering Wheel			
Steering Noise / Anomaly		✓	
Engine			
Engine Noise	✓	The Gears Scratch / Skip / Abnormal Operation	✓
Fume Quantity	✓	Power Loss	✓
Brake			
Brake System Anomaly		✓	
General			
Test Driven Status		✓	
✓ <i>No troubles detected, good condition or correct tests, according to vehicle age and mileage</i>			
! <i>Damages or malfunction detected that requires repairs by the buyer</i>			
NA <i>Not applicable</i>			
= <i>Not tested</i>			

Disclaimer

Please also note the "UserGuide condition report", which shows the scope of the vehicle description.

[User Guide](#)