



# AUDI Q5

## Q5 40 TDI quattro S tronic

VIN NO WAUZZZF7M2110727  
Registration Number Y7M2110727



MOT Date	Number of Owners	Number of Keys	Odometer Reading
2026-07-01	1	2	115678 km
Last Service	Last Service Mileage	First Registration Date	Country First Registered
2025-07-02	112263	2021-07-30	Germany

### Inspection Report Summary

Customer	BCA Online	Report Number	P20250908084904
Inspection Date / Place	2025-09-08 / BCA Neuss	Cosmetic Grade	4

### Vehicle Summary

Vehicle Condition	Runner	VAT Type	Qualifying
Fuel Type	Diesel	Road Worthy	Yes
Colour	Black	Engine Size (cc)	1968
Engine Size	2.0	No of Doors	5
Body Type	SUV	Drive Train	All-Wheel-Drive permanent
Seat Colour		No of Seats	5
Seat Covering Name	anthrazit	Seat Covering	Cloth/Leather
Charging Cables		NEDC CO2 Rating (q/km)	142
Gearbox Type	Automatic		

### Vehicle History & Documents

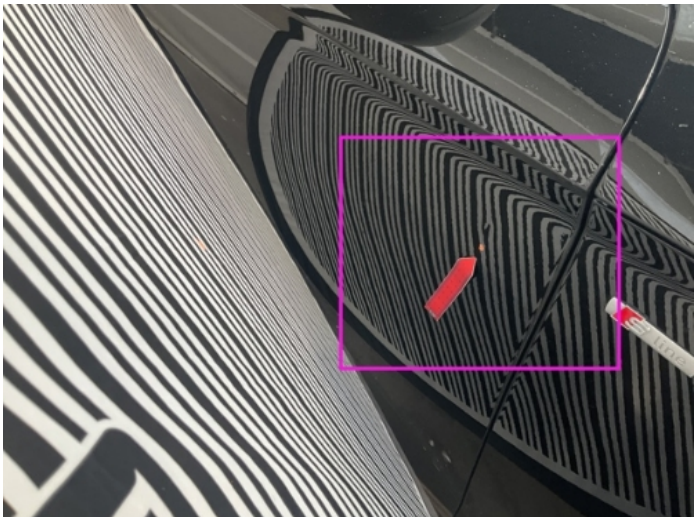
Service Book Available	Present	Next Service Mileage	km
Previous Usage		Imported	No
Manufacturer Warrenty			











Equipment

Tinted Glass	Airbag Status	Ambientlighting	Bluetooth telephone interface
Diesel particulate filter	Digitaldashboard	Heated wing mirrors	Remote central locking
Roof rails	Stability control	Electrictailgate	LED Headlamps
Rear parking sensors	USB Socket	Alloys wheels	Anti-lock braking
Cruise control	Digital Radio	Front parking sensors	Remote adjusting wing mirrors
Reversing Camera	Satellite navigation	Electrically folding wing mirrors	Leather steering wheel
Radio			

Equipment Details

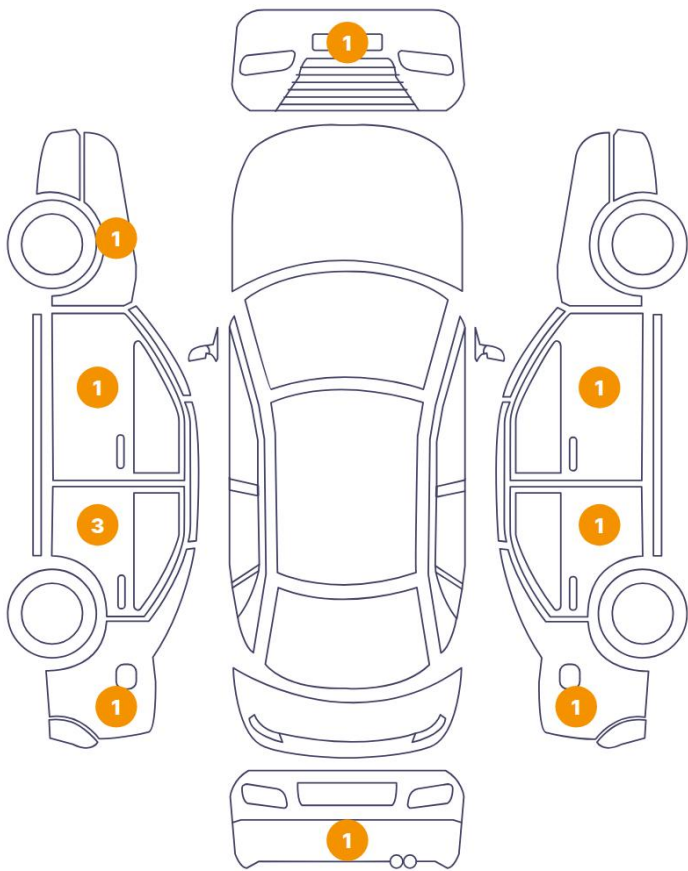
Air Conditioning	Three Zone Climate Control	Alloy Wheel Size	20
Seat Heating	Front		

Wheels & Tyres

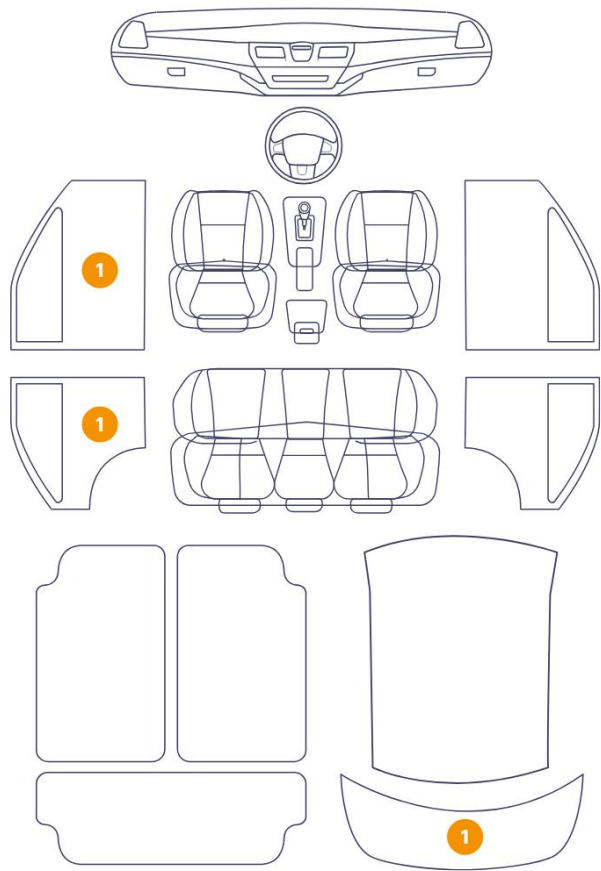
Extra Wheel - 1 Tyre Depth	6	Extra Wheel - 2 Tyre Depth	6
Extra Wheel - 3 Tyre Depth	6	Extra Wheel - 4 Tyre Depth	6
Right Front Tyre Depth	5	Left Front Tyre Depth	5
Right Rear Tyre Depth	5	Left Rear Tyre Depth	5

Cosmetic Damage

11 Schäden



3 Schäden



Component		Damage	Comments
1	Wing Expander / Front Left	Paint / Poor Previous Repair	
2	Door / Back Left	Paint / Poor Previous Repair	
3	Bumper / Front	Paint / Scratch / Scuff	
4	Door / Front Left	Paint / Scratch / Scuff	
5	Panel Filling / Front Left	Interior / Scratched	
6	Door / Back Left	Bodywork / Dent / Dent	
7	Door / Back Left	Paint / Scratch / Scuff	
8	Panel Filling / Back Left	Interior / Scratched	
9	Side Panel / Back Left	Bodywork / Dent / Dent	
10	Bumper / Back	Paint / Scratch / Scuff	
11	Tailgate Upholstery / Back	Interior / Scratched	
12	Side Panel / Back Right	Paint / Scratch / Scuff	

13	Door / Back Right	Paint / Stone Chip
14	Door / Front Right	Bodywork / Dent / Dent





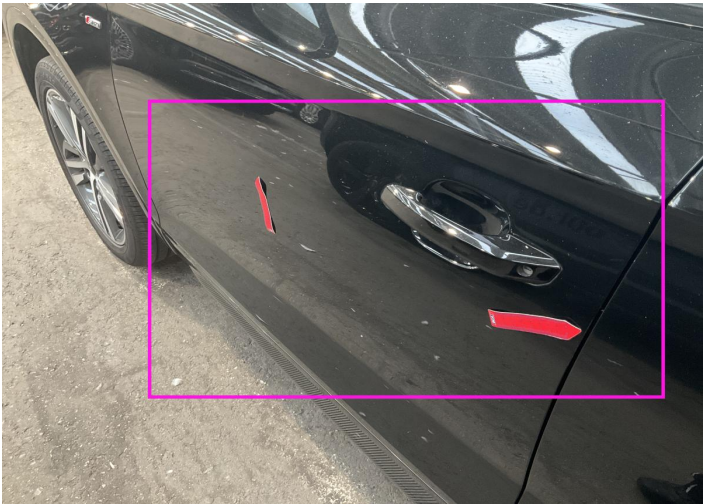
1. Wing Expander / Front Left  
Paint / Poor Previous Repair -



2. Door / Back Left  
Paint / Poor Previous Repair -



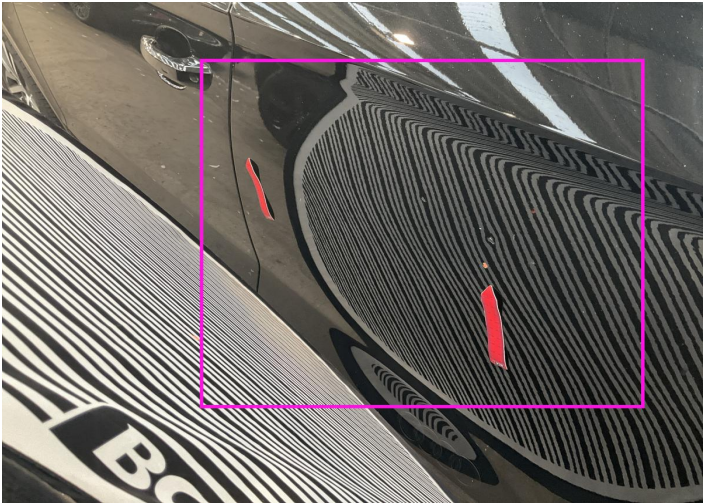
3. Bumper / Front  
Paint / Scratch / Scuff -



4. Door / Front Left  
Paint / Scratch / Scuff -



5. Panel Filling / Front Left  
Interior / Scratched -



6. Door / Back Left  
Bodywork / Dent / Dent -

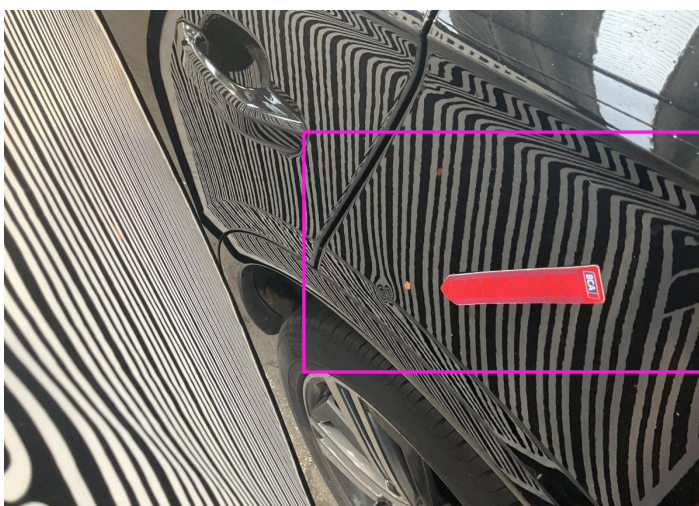




7. Door / Back Left  
Paint / Scratch / Scuff -



8. Panel Filling / Back Left  
Interior / Scratched -



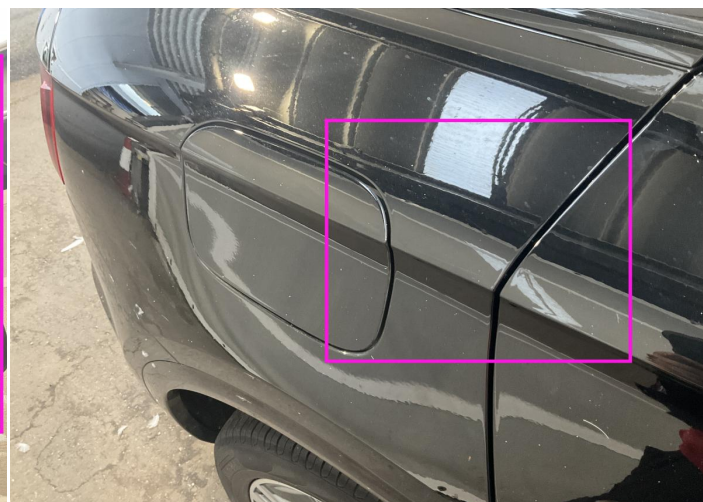
9. Side Panel / Back Left  
Bodywork / Dent / Dent -



10. Bumper / Back  
Paint / Scratch / Scuff -



11. Tailgate Upholstery / Back  
Interior / Scratched -

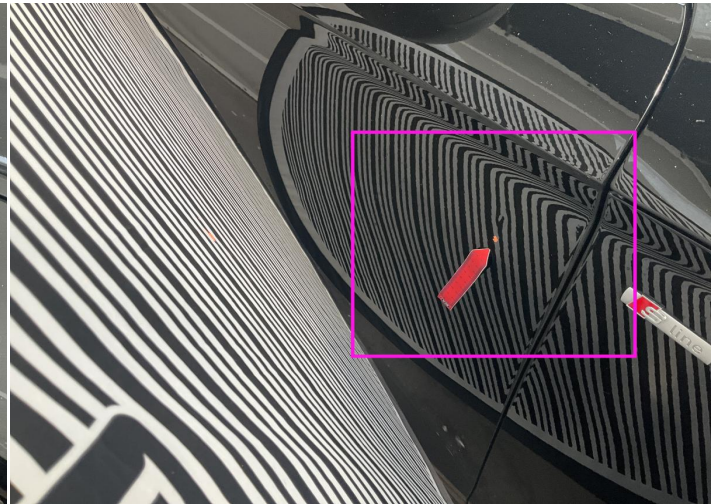


12. Side Panel / Back Right  
Paint / Scratch / Scuff -





13. Door / Back Right  
Paint / Stone Chip -



14. Door / Front Right  
Bodywork / Dent / Dent -



## Mechanical Condition

### Control Lights

ABS Warning Light	✓	ESP Fault/Traction Control Malfunction Light	✓
Diesel Particulate Filter Light	✓	Airbag Warning Light	✓
Oil Pressure Warning Light	✓	Brake Warning Light	✓
Power Steering Warning Light	✓	Alternator / Battery	✓
All - wheel Drive	✓	No Dashboard Lights	✓
Display Defect	✓	Service Light	✓

### Engine

Engine Status / EML	✓	Engine Leak Visible	✓
Engine Starts	✓		

### Gearbox

Gear Box	✓
----------	---

### Equipments Test

Central Locking	✓	Main & Spare Keys Functioning	✓
Electric Windows	✓	Navigation System	✓
Audio Equipment	✓	Parking Sensors / Cameras Functioning	✓
AC / Heating System	✓	Other Equipments	✓

### Levels

Brakes Fluid	✓	Coolant Fluid	✓
--------------	---	---------------	---

Test Drive Inspection

Engine			
Engine Noise	✓	Fume Quantity	✓
Power Loss	✓	The Gears Scratch / Skip / Abnormal Operation	✓
Brake			
Brake System Anomaly	✓		
Steering Wheel			
Steering   Noise / Anomaly	✓		
General			
Test Driven Status	✓		
✓ No troubles detected, good condition or correct tests, according to vehicle age and mileage			
! Damages or malfunction detected that requires repairs by the buyer			
NA Not applicable			
☐ Not tested			

Disclaimer

Please also note the "UserGuide condition report", which shows the scope of the vehicle description.

[User Guide](#)