



Expertise

Protocol number: 41182827  
Order No. / Reference: 25065159  
Inspection date: 22 Aug 2025

Manufacturer: Audi	Model: Q5 40 TDI quattro S tronic
VIN: WAUZZZFY6N2088320	



Vehicle details	
Manufacturer / Type / Model / Equipment	
Audi Q5 40 TDI quattro S tronic	
Vehicle Identification number	WAUZZZFY6N2088320
Mileage (Read)	66,658 km
First registration	4 Jul 2022
Number of holders	1
Power / Engine displacement	150 kw / 1,968 ccm
Fuel type / Cylinder	Hybrid Diesel / E / 4
Gearbox / Number of gears	Automatic / 7
Type of drive	All-wheel drive
Type of vehicle	SUV
Colour / colour code	Mythossschwarz Metallic (Y9T)
Doors / Seats	5 / 5
Upholstery type	Cloth
Colour of upholstery	Black-Anthracite



Vehicle details			
<b>Maintenance booklet / proof</b>	digital proof / complete	<b>Next maintenance in</b>	13,200 km
<b>Last maintenance on / at</b>	07/2025 at 66,480 km		
<b>Key is / should be</b>	2 / 2	<b>FZG documents</b>	ZB#2 (B) was available (copy), ZB#1 (S) was not available
		<b>Letter No.</b>	GJ094272
<b>Previous damage / Accident</b>	Detectable	<b>Repainting</b>	None detectable
<b>Inspection conditions</b>	sufficient	<b>Lifting equipment / pit</b>	yes
<b>Test drive</b>	Not performed	<b>Engine function test</b>	Performed
<b>Manufacturer key number/ type code number</b>	0588 / BQW 00369		
<b>Emission standard</b>	EURO6;WLTP;AP;PI/CI; M, N1 I	<b>Fine dust sticker</b>	
<b>Permitted total weight</b>	2,510 kg	<b>Empty weight</b>	

Tyres				
Mounted tyres				
#	Tyre size	Type of tyre	Manufacturer	Tread depth
1)	235/65 R17 104W	Summer tires (with run-flat tires) on Light alloy	Hankook	5mm / 5mm
2)	235/65 R17 104W	Summer tires (with run-flat tires) on Light alloy	Hankook	6mm / 6mm

Replacement				
Typ	Tyre size	Type of tyre	Manufacturer	Tread depth
	Tirefit	Expiration date 03/2027		

**Legend:** Tread depth information for tires on the left is in the first place, for tires on the right is in the second place on the axle in the direction of travel



## Equipment

### Standard equipment

- AdBlue tank (12 liters)
- Airbag: Front side airbags and head airbag system
- All-wheel drive "quattro" with ultra technology
- Traction control (ASR)
- Audi drive select
- Audi pre sense city
- Exterior mirror housings in body color
- Brake light, third
- roof edge spoiler
- Micrometallic silver decorative inlays
- tachometer
- Door sills with aluminum inserts at the front
- Electronic differential lock (EDS)
- Driver Information System
- Electric windows front and rear
- Floor mats front and rear
- Cruise control including speed limiter
- Heated rear window
- Interior lighting
- Manual parental control
- Automatic air conditioning
- trunk floor mat
- Front headrests
- LED rear lights
- Steering wheel: Leather steering wheel in 3-spoke design with multifunction
- Front center armrest
- Non-smoking version
- Wheel: Light alloy wheels, 17" 10-spoke
- Wheel: Tire repair kit
- Radio accessories: Data module Europe
- Seat belts
- Seats: Standard seats in the front
- Seats: Front seats manually adjustable
- Start-stop system
- Separation net
- Glazing: Windscreen with thermal insulation and acoustic glazing
- Electronic immobilizer
- Thermal insulation glazing
- Black trim strips
- Airbag for driver and front passenger
- Accent surfaces matt black
- Anti-lock braking system (ABS)
- Audi connect emergency call & service with Audi connect Remote & Control
- Exterior mirrors electrically adjustable and heated
- Hill descent assistant
- Fabric headliner
- Black roof rails with roof rack detection
- Diesel particulate filter (DPF)
- Rear parking aid
- Electromechanical parking brake
- Electronic Stabilization Control (ESC)
- Chassis: Standard chassis
- Radio key (without Safe-Lock)
- Luggage compartment lid, electrically opening and closing
- Transmission: S tronic 7-speed
- Rear window wiper
- Dimmable interior mirror
- ISOFIX and Top Tether child seat attachment for the outer rear seats
- Headrests (3) rear
- Loading sill protection in plastic
- LED headlights
- Light/rain sensor
- Mild hybrid
- Model designation according to new performance labeling
- Wheel: On-board tool kit (without jack)
- Wheel: Tire pressure monitoring indicator
- Radio: MMI Radio plus
- Power steering, electromechanical
- Seat covers in fabric synonym
- Seats: Rear seat backrest, split folding
- front sun visor
- Phone: Bluetooth interface
- Bandage material with warning triangle
- Glazing: Clear glass
- Glazing: Side and rear windows in thermal insulation glazing
- Central locking with radio remote control

### Extra equipment



- Exterior mirrors electrically adjustable, heated and foldable, with automatic dimming on both sides (including automatic curbside function for the passenger side - with integrated LED indicator - mirror glass aspherical on the left, convex on the right - including heated windshield washer nozzles - The automatic curbside function folds the passenger exterior mirror down when reverse gear is engaged, giving the driver a better view of the curb.)
- Business package (Audi phone box - MMI navigation plus (including driver information system with color display) - Audi virtual cockpit - heated front seats - automatically dimming interior mirror - electrically adjustable, heated, and folding exterior mirrors, automatically dimming on both sides including automatic curbside assistance for the passenger mirror - high beam assist - manual sunblind for the rear door windows)
- Telephone: Audi Phone Box (same features as Audi phone box light; additional functions: The Audi phone box includes: -Bluetooth interface -Hands-free system -Coupling antenna for connecting the mobile phone to the external antenna for improved reception quality and lower cell phone radiation in the vehicle interior -LTE support - Charging option via USB port or wireless charging (Qi standard) - Forget-the-phone warning -Charging status display in the MMI touch display)
- High Beam Assistant (within the system's limits, it automatically detects the headlights of oncoming traffic, the taillights of other road users, and light sources in built-up areas. Depending on the traffic situation, the high beam is automatically switched on or off. The system thus improves the driver's visibility and increases comfort.)
- Paint finish: metallic
- Steering wheel: 3-spoke leather steering wheel with multifunction plus (with 14 multifunction buttons for convenient operation of the existing infotainment features such as audio skip, telephony, NAV button, or the freely programmable button - adjustable in height and distance - with full-size airbag - shift paddles for manual gear changes)
- Front seat heating (for driver and passenger side, individually adjustable in 3 stages via direct selection button on the climate control panel)

## Brief expert findings

Documents submitted	At the time of the inspection, the registration certificate Part 2 (letter) was available, but the registration certificate Part 1 (certificate) was not. (Copy)
VIN comparison	The vehicle identification number (VIN) was read from the vehicle and its conformity with the submitted documents was verified during the inspection by the undersigned.
Inspection	The inspection conditions were sufficient for the assessment of the vehicle. Lifting equipment and a pit were available for examining the vehicle.
Test drive	No test drive/maneuvering was carried out during the inspection of the vehicle.
Engine function test	An engine test run was performed.

## Value reducing factors

No.	Component group	Description
1	Front bumper	Front bumper - Stone chips - Paint

## Wear and tear

No.	Component group	Description
1	Side panel - rear left side	Wheel arch - Scratch(es) - No deduction

The vehicle shows signs of wear commensurate with its age and use.

## Accident damages

No.	Accident
1	Rear



## Order/Scope of order

The order was placed to prepare a sales report for the vehicle described. This includes the following:

- Description of core relevant information about the vehicle
- Documentation of equipment features  
*(Delivery by third-party service providers)*
- Documentation of damage, defects, missing parts
- Documentation of previous damage, unrepaired previous damage, repainting
- a brief visual or functional inspection of the equipment details if possible.  
*(Functional tests of driver assistance systems are not included in the scope of services!)*
- a photo documentation of the vehicle

## Basis for the order

This product is based on the Alphabet Fuhrpark GmbH guidelines for vehicle returns and valuations. The expert makes the explicit findings in each individual case objectively within the framework of the specified standards based on his or her own expertise.

The vehicle inspection takes place in a disassembled state.

Damage or defects that can only be detected during disassembly/diagnosis work or through advanced knowledge remain within the scope of the prognosis risk. An extended risk exists for concealed defects caused by fraudulent deception and not identifiable by the expert.

Damage or defects resulting from normal use or wear and tear of the vehicle will be accepted according to the applicable standard.

There was no explicit identification or monetary consideration of the expected features within the product.

Features which in their nature and severity slightly exceed normal use but do not constitute unacceptable damage will be documented and identified under signs of use if necessary.

Damage or defects which, according to the underlying standard, can no longer be attributed to normal use or wear and tear are listed in the product under "Depreciating Factors".

Depending on the product specification, a monetary ID can be provided. If this takes place, the costs can be 100% d or pro rata depending on the vehicle's age and mileage.

## Previous damages

Non-repaired previous damages were found at the vehicle. The necessary repair costs are listed in the expert report or if necessary, are listed in detail in a separately enclosed repair cost calculation.

## Comments

Das Fahrzeug befand sich zum Besichtigungszeitpunkt in beschädigtem, nicht demontiertem Zustand. Schadenausweitung möglich, Zusatzkosten können entstehen





**Figure 1:** Diagonal front (left)



**Figure 2:** Diagonal front (right)



**Figure 3:** Diagonal rear (left)



**Figure 4:** Diagonal rear (right)



**Figure 5:** Interior - front



**Figure 6:** Interior - rear





Figure 7: Instrument cluster



Figure 8: Instrument panel



Figure 9: interior 360° view ([Online link](#))



Figure 10: Cargo area



Figure 11: VIN



Figure 12: Mounted tyres



Figure 13: Documents



Figure 14: Navigation



Figure 15: Misc.



Figure 16: Misc.



Figure 17: Misc.



Figure 18: Misc.





Figure 19: Misc.



Figure 20: Misc.

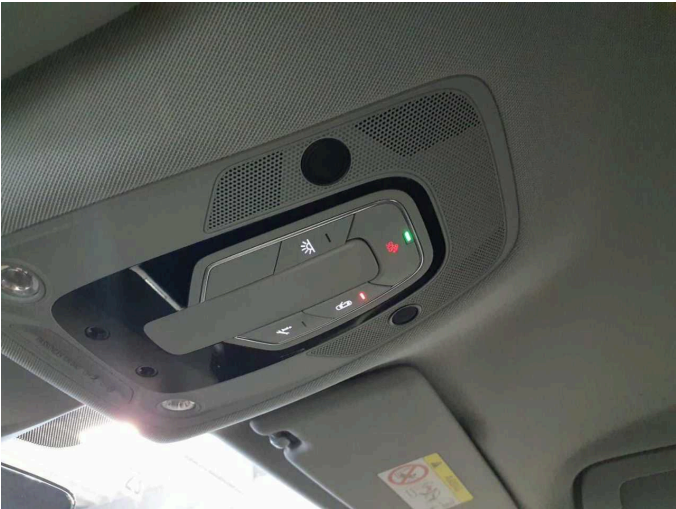


Figure 21: Misc.



Figure 22: Misc.



Figure 23: Misc.

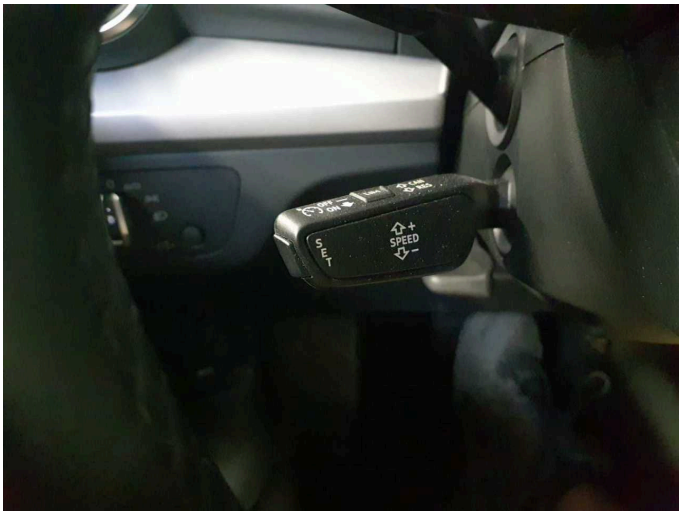


Figure 24: Misc.





Figure 25: Misc.



Figure 26: Misc.

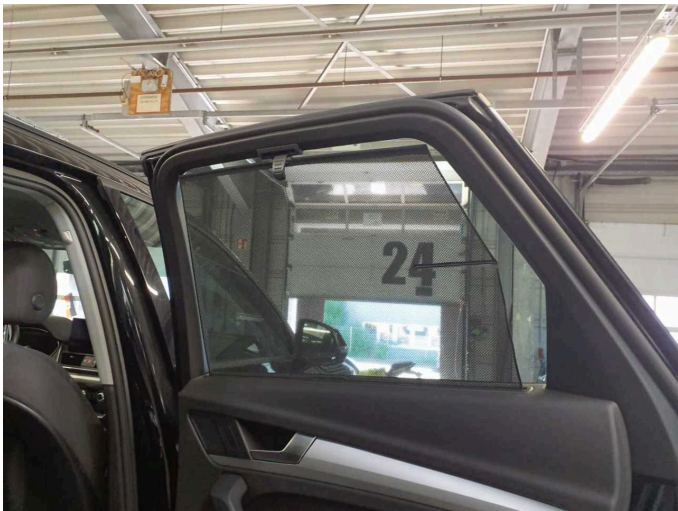


Figure 27: Misc.

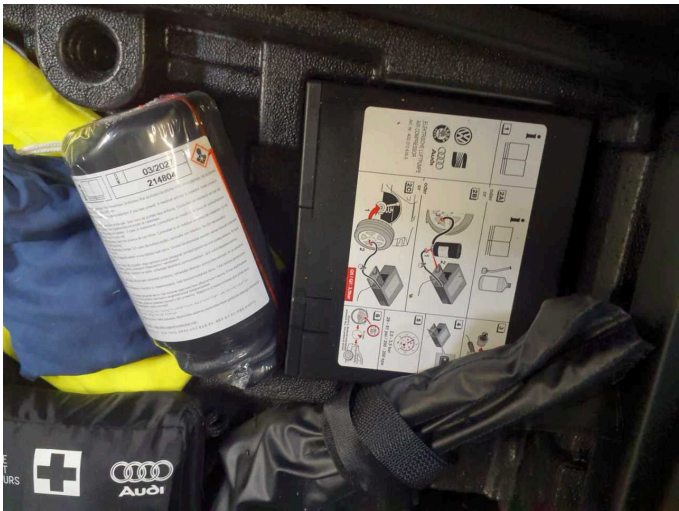


Figure 28: Misc.

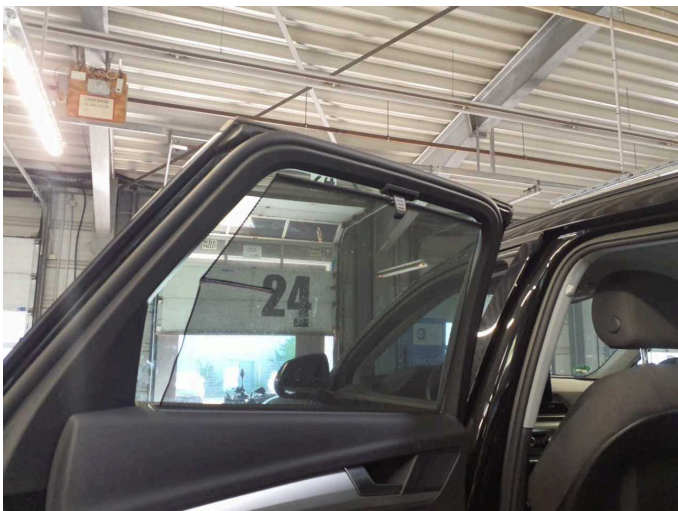
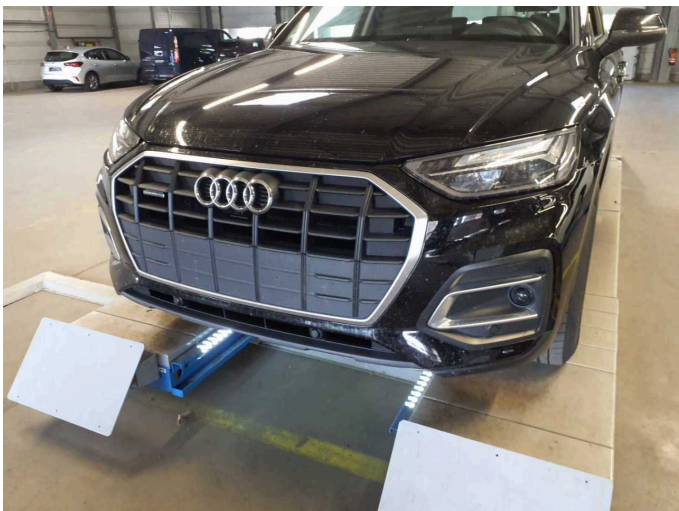


Figure 29: Misc.



Damage 1: Front bumper: Front bumper - Stone chips - Paint





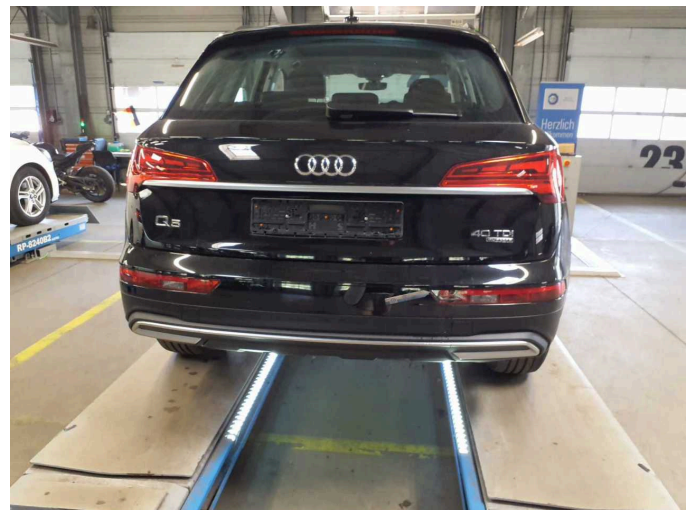
**Damage 1:** Front bumper: Front bumper - Stone chips - Paint



**Damage 1:** Front bumper: Front bumper - Stone chips - Paint



**Damage 1:** Front bumper: Front bumper - Stone chips - Paint



**Accident 1:** Rear

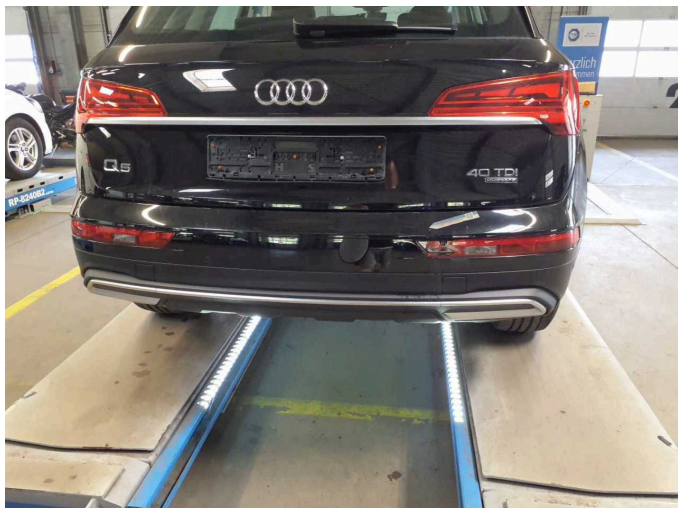


**Accident 1:** Rear



**Accident 1:** Rear

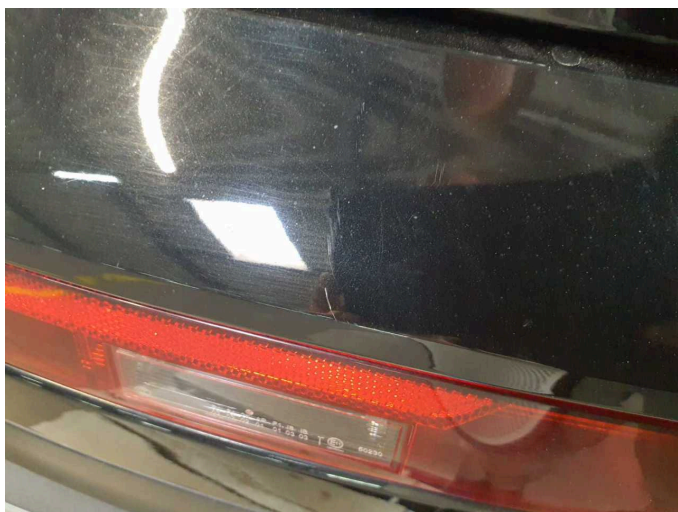




**Accident 1: Rear**



**Accident 1: Rear**



**Accident 1: Rear**



# Wartungshistorie

(gemäß Auftraggeber Informationen)

Fahrgestellnummer: WAUZZZFY6N2088320  
Hersteller / Modell: AUDI AUDI Q5 40 TDI quattro S tronic

Datum	KM-Stand	Beschreibung
30.07.2025	66.480	AU; Bremsbelagfühler ern; Bremse Sonstiges; Bremsklötze vorne; Bremsscheiben vorne
24.02.2025	58.303	Getriebeöl ern/prüfen; Kraftstofffilter ern; Motoröl b. Wartung; Ölfilter ern; Regelwartungsdienst; Reparatur Sonstiges; Wartung Sonstiges
29.11.2024	51.888	Reparatur Sonstiges; Systemtest/Eigendiagnose
23.07.2024	38.221	Bremsflüssigkeit; Bremsflüssigkeit ern
29.02.2024	29.882	Motoröl b. Wartung; Ölfilter ern; Regelwartungsdienst; Wartung Sonstiges
21.07.2023	18.822	Motoröl b. Wartung; Ölfilter ern; Ölwechsel; Wartung Sonstiges