



Expertise

Protocol number: 39541073
Order No. / Reference: 24708178
Inspection date: 29 Apr 2025

Manufacturer: Audi
VIN: WAUZZZFY6L2116386

Model: Q5 40 TDI quattro S tronic design



Vehicle details	
Manufacturer / Type / Model / Equipment	
Audi Q5 40 TDI quattro S tronic design	
Vehicle Identification number	WAUZZZFY6L2116386
Mileage (Read)	163,352 km
First registration	9 Nov 2020
Number of holders	1
Power / Engine displacement	150 kw / 1,968 ccm
Fuel type / Cylinder	Hybrid Diesel / E / 4
Gearbox / Number of gears	Automatic / 7
Type of drive	All-wheel drive
Type of vehicle	SUV
Colour / colour code	Ibisweiss (Y9C)
Doors / Seats	5 / 5
Upholstery type	Leather
Colour of upholstery	Black-Anthracite



Vehicle details

Maintenance booklet / proof	digital proof / incomplete	Next maintenance in	23 Tag(e)
Last maintenance on / at	08/2024 at 151,031 km		
Key is / should be	2 / 2	FZG documents	ZB#2 (B) was available (copy), ZB#1 (S) was not available
		Letter No.	FU654457
Previous damage / Accident	Detectable	Repainting	Detectable
Inspection conditions	Sufficient	Lifting equipment / pit	yes
Test drive	Not performed	Engine function test	Performed
Manufacturer key number/ type code number	0588 / BQW 00129		
Emission standard	EURO6;WLTP;DG;PI/CI; M, N1 I	Fine dust sticker	
Permitted total weight	2,475 kg	Empty weight	

Tyres

Mounted tyres

#	Tyre size	Type of tyre	Manufacturer	Tread depth
1)	255/45 R20 101W	Summer tyres on Light alloy	Michelin	5mm / 5mm
2)	255/45 R20 101W	Summer tyres on Light alloy	Michelin	6mm / 6mm

Additional tyres

#	Tyre size	Type of tyre	Manufacturer	Tread depth
1)	235/65 R17 104H	Winter tyres on Light alloy	Pirelli	3mm / 3mm
2)	235/65 R17 104H	Winter tyres on Light alloy	Pirelli	4mm / 4mm

Replacement

Typ	Tyre size	Type of tyre	Manufacturer	Tread depth
	Tirefit	Expiration date 08/2025		

Legend: Tread depth information for tires on the left is in the first place, for tires on the right is in the second place on the axle in the direction of travel



Equipment

Standard equipment

- AdBlue tank (12 liters)
- Airbag: Front side airbags and head airbag system
- Anti-lock braking system (ABS)
- Audi connect emergency call & service including vehicle control
- Exterior mirrors electrically adjustable and heated
- Hill descent assistant
- roof edge spoiler
- Roof rails with roof rack detection, anodized
- Diesel particulate filter (DPF)
- Door sills with aluminum insert
- Electronic differential lock (EDS)
- Driver Information System
- Electric windows front and rear
- Velour floor mats front and rear
- Transmission: S tronic (7-speed)
- Rear window wiper
- ISOFIX and Top Tether child seat attachment for the outer rear seats
- Front headrests
- LED rear lights
- Steering column mechanically adjustable in height and distance
- Mild hybrid
- Front center armrest
- Gloss Package
- Wheel: Tire pressure monitoring indicator
- Wheel: Tire repair kit
- Radio accessories: 8 speakers (passive) front and rear
- Radio accessories: Electrical interface for external use, AUX-IN and USB
- Seat belts
- Seats (normal seats) front
- Start-stop system
- Phone: Bluetooth interface
- Bandage material with warning triangle
- Electronic immobilizer
- xenon light
- Airbag for driver and front passenger
- all-wheel drive "quattro" with ultra technology
- Traction control (ASR)
- Audi drive select
- Audi pre sense city
- Exterior mirror housings in body color
- Fabric headliner
- roof crossbars
- Decorative inlays aluminum rhombus
- tachometer
- Electromechanical parking brake
- Electronic Stabilization Control (ESC)
- Chassis: Dynamic chassis
- radio key (without Safe-Lock)
- speed limiter, adjustable
- Heated rear window
- Manual parental control
- Automatic air conditioning
- Headrests (3) rear
- Paint finish: Uni
- Steering wheel: Leather steering wheel in 3-spoke design with multifunction
- Light/rain sensor
- Armrest - centre, rear
- package Ambient lighting package
- Wheel: 18" cast aluminum wheels (4 pieces) in 5-twin-spoke dynamic design
- Radio: MMI Radio plus
- Radio accessories: Digital radio reception (DAB)
- Windscreen wiper interval control with light sensor
- Power steering, electromechanical
- Seat covers in fabric reference
- Seats: Folding rear seat backrest
- Daytime running light
- Separation net
- Glazing: Clear glass
- Thermal insulation glazing

Extra equipment

- Airbag (side airbags) rear (Side airbags in the rear offer additional protection for rear seat passengers.)
- Audi connect Navigation & Infotainment (myRoute: Navigation with Google Earth, online traffic information, point-of-interest (POI) search with voice control, travel information, parking information, myAudi Navigation, predictive route guidance, enhanced point-of-interest (POI) display, enhanced 3D city display, hazard information, traffic sign information -myNetwork: Wi-Fi hotspot, notifications, email, calendar, access to Twitter -myInfo: online news, fuel prices, weather -myRoadmusic: online media stream)



- Audi virtual cockpit with 12.3" color display (Innovative, fully digital instrument cluster for flexible and needs-based display of information according to driver needs: speed/rpm, map display, radio/media information, etc.; the VIEW button on the multifunction steering wheel allows switching between two different sized displays of the round instruments. The display with small instruments enables large, clear graphics of the onboard computer and MMI content)
- Elimination of model name and performance/technology lettering
- Chassis Sports suspension (with tighter suspension and damping for more direct road contact and sportier handling; stabilizer, rear axle support elastically mounted)
- Cruise control system including speed limiter (cruise control system maintains the desired speed from around 20 to 250 km/h, provided the engine power or braking effect allows it, operated via a separate steering column lever, display of the set speed in the driver information system. The LIM button can be used to switch between cruise control system and speed limiter. In limiter mode, the accelerator pedal is used to drive normally. The speed is limited to the set limiter speed.)
- Headrests: variable headrests for front seats (with manual adjustment of headrest height and distance)
- 70 liter fuel tank with additional 24-liter AdBlue tank (larger tank for AdBlue solution)
- Steering wheel: Sport contour leather steering wheel in 3-spoke design, flattened at the bottom with multifunction plus (with more contoured steering wheel rim; with full-size airbag, adjustable in height and distance; with 14 multifunction buttons for convenient operation of the existing infotainment features, such as audio skip, telephony, the NAV or the freely programmable button)
- MMI Navigation plus with MMI touch (Navigation system with 8.3-inch color display, 3D map display, MMI search, MMI touch, online traffic information, online map updates, driver information system with 7" display, use of AUDI connect services, country information, my Audi special destinations, Wi-Fi hotspot, myAudi special destinations, voice control, MMI radio, flash memory for music (10 GB), AUX-IN, DVD drive (MP3, WMA, ...), 2 SDXC card readers, email display, USB interface, Bluetooth interface (hands-free calling and streaming))
- Package Ambient lighting package (multi-color adjustable) (3 predefined color profiles additional interactive and individual color profile. (controlled by the Audi Drive select modes) -30 colors to choose from The color adjustments for contour or ambient lighting scopes: Inside door operation front/rear (white) multi-colored: Footwell lighting front/rear Ambient door lighting front/rear Ambient lighting center console front Door pockets front/rear Illuminated application I-panel Illuminated application doors)
- Electrically adjustable, heated and foldable exterior mirrors with memory function (including automatic curb function for passenger exterior mirror, with integrated LED indicator, convex, flat or aspherical mirror glass, including heated windscreen washer nozzles; the automatic curb function folds the passenger mirror down when reverse gear is engaged, giving the driver a better view of the curb)
- Interior mirror, automatically dimming, frameless
- 3-zone comfort automatic climate control (electronically regulates the air temperature and distribution for the driver and front passenger, sun position-dependent control - the air distribution can be adjusted using 5 main positions - climate control panel for adjusting the rear compartment temperature in the rear center console - buttons for defrosting the front and rear windows - automatic recirculation control with activated carbon and particle filter - with key recognition and humidity sensor - ventilated glove compartment - residual heat utilization)
- Audi Matrix LED headlights with dynamic indicators front and rear (daytime running lights, dipped beam, position lights, indicators, cornering lights (supplementing side illumination on tight bends and when turning), all-weather lights (to reduce glare in poor visibility conditions), maneuvering lights (illuminating the swivel area when reversing), motorway lights (extended light range from a speed of 110 km/h), automatic dynamic headlight range control, dynamic cornering lights, headlight cleaning system)
- Package Storage and luggage compartment package (flexible transport of objects and comfort when travelling, consisting of: - storage net on the back of the front seat backrests - cup holder in the rear centre armrest - storage compartment on the driver's side - lockable glove compartment in the luggage compartment: - luggage compartment net - left recess net - tensioning strap on the left - tensioning strap on the right)
- City Assistance Package with Parking Assistance Package (Parking Assistant - with front and rear view camera system and two side cameras - Audi pre sense rear - Audi side assist)
- Panorama glass roof (two-part, electrical operation for extending and opening the front glass element, tinted glass insert - including an electrically operated sun blind for the front and rear passengers - convenient closing from the outside via the remote key - ensures a pleasant, light-flooded interior; improved interior climate through efficient ventilation - integrated wind deflector reduces wind noise when the roof is open)
- Wheels: 20" Audi Sport cast aluminum wheels (4 pieces) in 5-spoke off-road design, matte titanium look, high-gloss (size 8 J x 20 with 255/45 R 20 tires)



- Parking assistant including parking aid plus (automatic steering when parking. Ultrasonic sensors are used to search for suitable parallel or parallel parking spaces. The ideal parking path is calculated for perpendicular parking spaces, and the ideal entry and exit paths for parallel parking spaces. The driver must accelerate, shift gears, and brake, as well as monitor the parking process. The system handles the steering process itself. The surroundings display warns of obstacles in front of and behind the vehicle, and, depending on the steering angle, also of obstacles to the side.)
- Seat covers in leather/synthetic leather combination (seat centre panel of the front seats and both outer seats in the rear as well as the seat side bolsters on the driver's side in the entry area in leather - seat side bolsters, headrests, door trim panel, centre armrest and middle seat in the rear in synthetic leather)
- Seats: Front seats electrically adjustable with memory function for driver's seat (with electrical adjustment of seat height, seat longitudinal position, seat inclination, backrest inclination - 2 memory positions for the electrically adjustable driver's seat and the exterior mirrors)
- Seat heating front and rear (heats seat and backrest centre panel, with leather upholstery and sports seats; also seat side bolsters - individually adjustable in several stages for driver and passenger side - additionally for the outer rear seats, separately adjustable)
- Telephone: Audi Phone Box (same features as Bluetooth interface; additional functions: - inductive charging function (Qi standard) with 5 watts including forget-it warning and charging status display in the MMI - telephone holder with 170 x 87 mm in the front center armrest - hands-free calling with up to 2 connected mobile phones possible including vehicle-internal coupling antenna for connecting the mobile phone to the external antenna, thus low radiation in the vehicle interior and significantly improved reception quality; with LTE support)
- Radio accessories: Bang & Olufsen Sound System with 3D sound (19 speakers (including center speaker/subwoofer and additional 3D sound tweeters and midrange speakers) - 755-watt 16-channel amplifier - lighting of the front speaker panels - spatial sound reproduction through the new 3D sound sound feature. This is generated by additional speakers in the A-pillar, by the midrange speakers and by the Fraunhofer Symphoria technology.)
- Seats: Rear seat bench plus (including longitudinal adjustment and backrest inclination - fold-out center armrest with 2 cup holders - rear seat backrest can be divided in a ratio of 40:20:40 or folded down completely - including through-loading facility - remote backrest release in the luggage compartment for the two outer backrest sections (no separate remote release for the smaller center section) - L-shaped rear headrests, manually adjustable)
- Sun visor, extendable (for driver and front passenger - foldable and swiveling - can also be moved backwards on the side - including make-up mirror)
- Stainless steel running boards (e.g., facilitate the storage of items in the ski and luggage box on the roof; rubber pads reduce the risk of slipping; load capacity 150 kg each)
- Glazing: Acoustic glazing for front door windows (Front door windows with acoustic glazing provide improved exterior noise insulation.)
- Glazing: Glass in the rear dark tinted (front heat-insulating glazing (tinted green))

Brief expert findings

Documents submitted	At the time of the inspection, the registration certificate part 2 (letter) was available, but the registration certificate part 1 (certificate) was not available. (Copy)
VIN comparison	The vehicle identification number (VIN) was read and the undersigned verified that it matched the documents submitted during the inspection.
Inspection	The inspection conditions were sufficient to assess the vehicle. The inspection was carried out using the lighting conditions provided by the photo system included in the report. Lifting equipment and a pit were available for examining the vehicle.
Test drive	No test drive/maneuvering was carried out during the inspection of the vehicle.
Engine function test	An engine test run was performed.

Value reducing factors

No.	Component group	Description
1	Equipment	Vehicle key - Non-operational - Perform diagnosis
2	Engine cooling	Coolant - Missing - Perform diagnosis
3	Bonnet	Insulation lining - Broken / torn - Replace



No.	Component group	Description
4	Vehicle glazing	Rear window - Scratched - Loss in value
5	Equipment	Vehicle key - Broken / torn - Replace

Wear and tear

No.	Component group	Description
1	Seat - front	Seat cover - left side - Worn - No deduction
2	Front bumper	Front bumper (Steinschlag) - Scratched - No deduction
3	Headlight	Headlight - right side - Stone chips - No deduction
4	Headlight	Headlight - left side - Stone chips - No deduction
5	Bonnet	Bonnet - Stone chips - No deduction
6	Vehicle glazing	Rear window - Scratched - No deduction
7	Body	Body (oberflächlich) - Scratch(es) - No deduction
8	Rear bumper	Rear bumper - Scratched - No deduction
9	Wheel / tyres	Alloy rim - front right side - Scratched - No deduction
10	Steering system	Steering wheel - Scratched - No deduction

The vehicle shows signs of wear commensurate with its age and use.

Previous damages

No.	Previous damage	Extent of damage (Net)
1	Rear, Side right, Provided by user / customer, from 23 Oct 2024	6.885,68 €

Repainting

No.	Repainting
1	Bonnet, Professionally carried out, Invoice of repair done Non-existent
2	Side panel - rear right side, Professionally carried out, Invoice of repair done Non-existent
3	Door - rear right side, Professionally carried out, Invoice of repair done Non-existent
4	Door - front right side, Professionally carried out, Invoice of repair done Non-existent

Paint coat thickness measurement

Bonnet	363 µm	Side panel - rear right side	448 µm
Door - rear right side	150 µm	Door - front right side	225 µm

Order/Scope of order

The order was placed to prepare a sales report for the vehicle described. This includes the following:

- Description of core relevant information about the vehicle
- Documentation of equipment features
(Delivery by third-party service providers)
- Documentation of damage, defects, missing parts
- Documentation of previous damage, unrepaired previous damage, repainting
- a brief visual or functional inspection of the equipment details if possible.
(Functional tests of driver assistance systems are not included in the scope of services!)
- a photo documentation of the vehicle



Basis for the order

This product is based on the Alphabet Fuhrpark GmbH guidelines for vehicle returns and valuations. The expert makes the explicit findings in each individual case objectively within the framework of the specified standards based on his or her own expertise.

The vehicle inspection takes place in a disassembled state.

Damage or defects that can only be detected during disassembly/diagnosis work or through advanced knowledge remain within the scope of the prognosis risk. An extended risk exists for concealed defects caused by fraudulent deception and not identifiable by the expert.

Damage or defects resulting from normal use or wear and tear of the vehicle will be accepted according to the applicable standard.

There was no explicit identification or monetary consideration of the expected features within the product.

Features which in their nature and severity slightly exceed normal use but do not constitute unacceptable damage will be documented and identified under signs of use if necessary.

Damage or defects which, according to the underlying standard, can no longer be attributed to normal use or wear and tear are listed in the product under "Depreciating Factors".

Depending on the product specification, a monetary ID can be provided. If this takes place, the costs can be 100% d or pro rata depending on the vehicle's age and mileage.

Previous damages

According to available information previous damages were repaired at the vehicle. Traces of repairs, which allow conclusions about the area of repair, were not recognizable during the inspection.

Comments

Der beiliegende Winterradsatz ist nicht Bestandteil der vorliegenden Fahrzeugausstattung.



Figure 1: Diagonal front (left)



Figure 2: Diagonal front (right)



Figure 3: Diagonal rear (left)



Figure 4: Diagonal rear (right)



Figure 5: Interior - front



Figure 6: Interior - rear



Figure 7: Instrument cluster



Figure 8: Instrument panel



Figure 9: interior 360° view ([Online link](#))



Figure 10: Cargo area

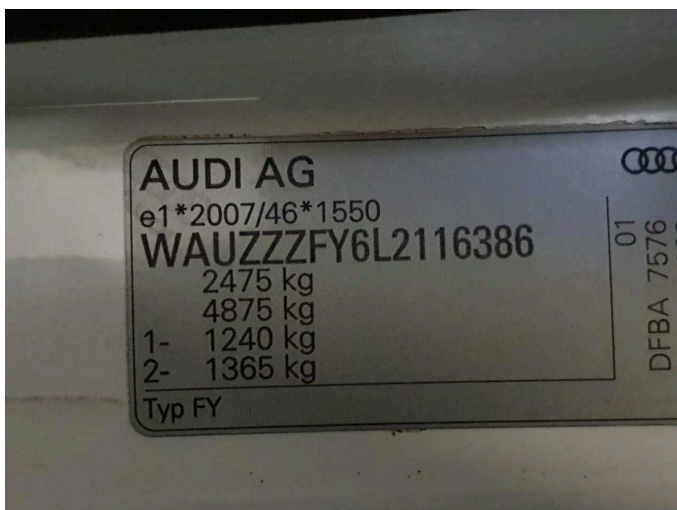


Figure 11: VIN



Figure 12: Mounted tyres



Figure 13: Documents



Figure 14: Additional tyres



Figure 15: Navigation



Figure 16: Misc.



Figure 17: Misc.



Figure 18: Misc.



Figure 19: Misc.



Figure 20: Misc.



Figure 21: Misc.



Figure 22: Misc.



Figure 23: Misc.



Figure 24: Misc.

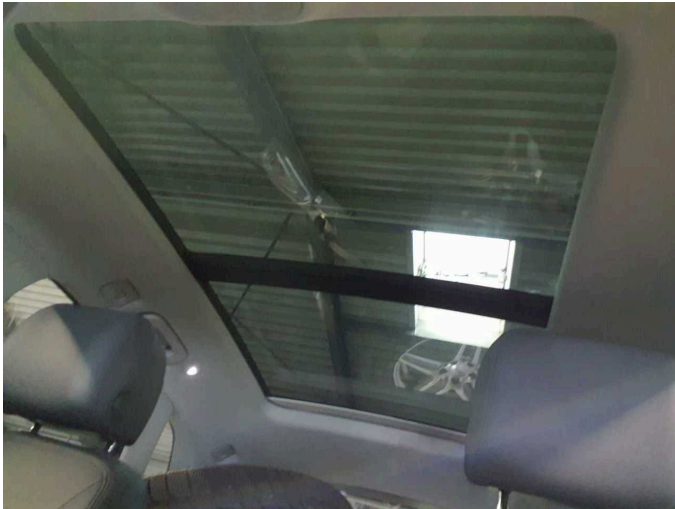


Figure 25: Misc.



Figure 26: Misc.

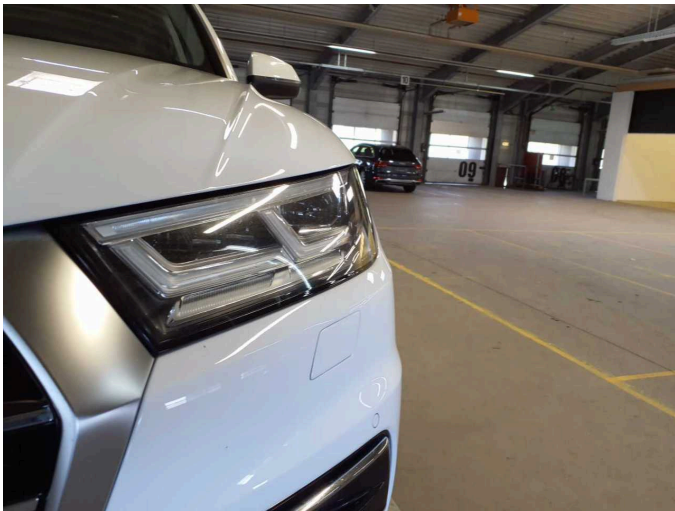


Figure 27: Misc.



Figure 28: Misc.

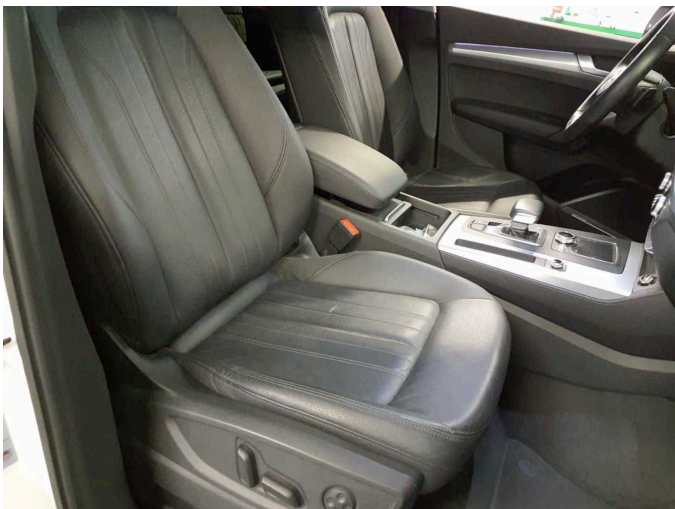


Figure 29: Misc.



Figure 30: Misc.



Figure 31: Misc.



Figure 32: Misc.

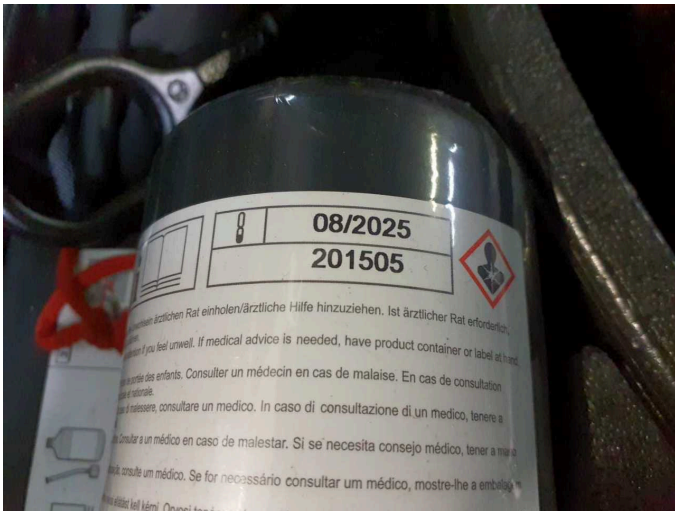
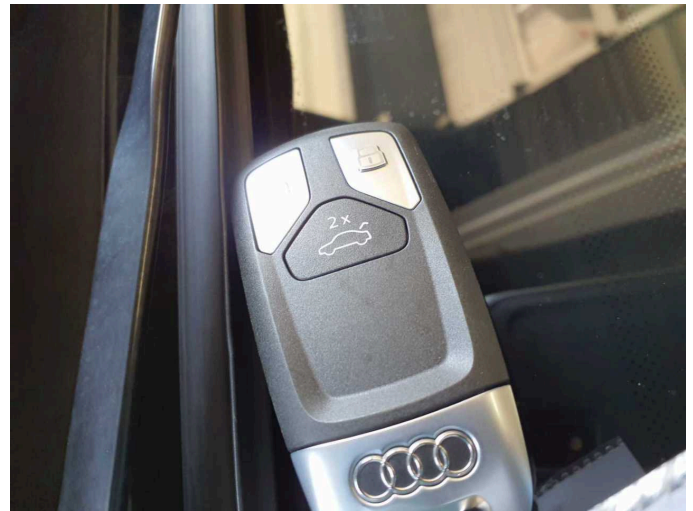


Figure 33: Misc.



Damage 1: Equipment: Vehicle key - Non-operational - Perform diagnosis



Damage 2: Engine cooling: Coolant - Missing - Perform diagnosis



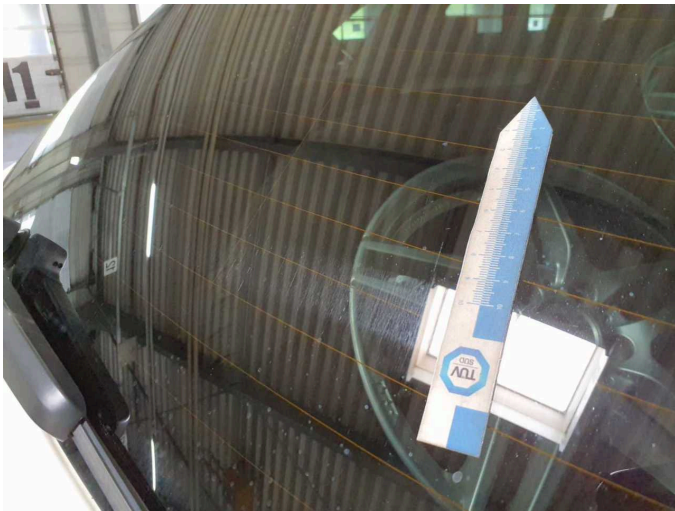
Damage 3: Bonnet: Insulation lining - Broken / torn - Replace



Damage 3: Bonnet: Insulation lining - Broken / torn - Replace



Damage 4: Vehicle glazing: Rear window - Scratched - Loss in value



Damage 4: Vehicle glazing: Rear window - Scratched - Loss in value



Damage 4: Vehicle glazing: Rear window - Scratched - Loss in value



Damage 4: Vehicle glazing: Rear window - Scratched - Loss in value



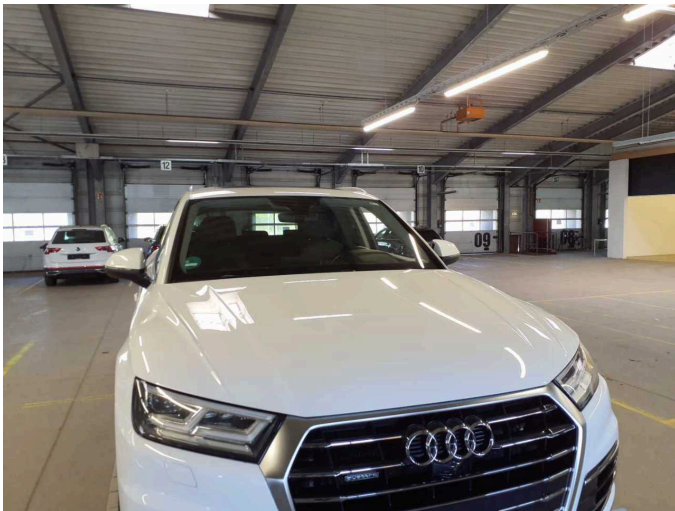
Damage 5: Equipment: Vehicle key - Broken / torn - Replace



Damage 5: Equipment: Vehicle key - Broken / torn - Replace



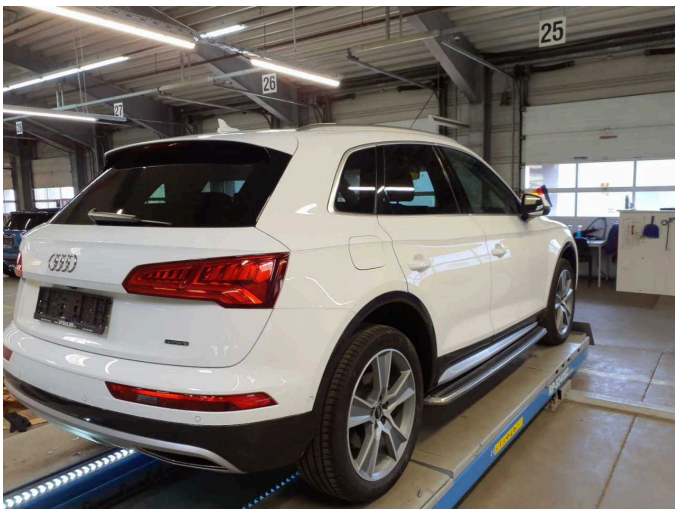
Damage 5: Equipment: Vehicle key - Broken / torn - Replace



Repainting 1: Bonnet



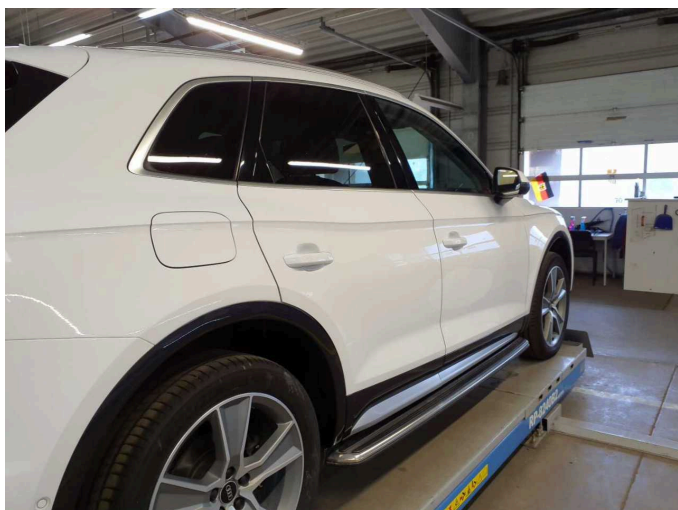
Repainting 1: Bonnet



Repainting 2: Side panel - rear right side



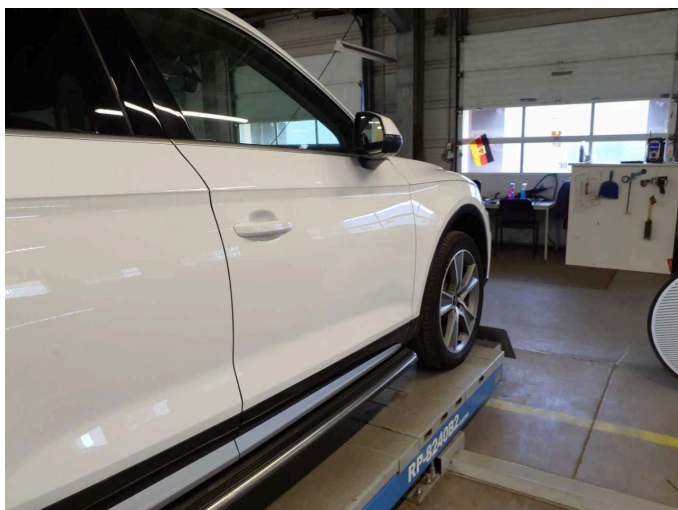
Repainting 2: Side panel - rear right side



Repainting 3: Door - rear right side



Repainting 3: Door - rear right side



Repainting 4: Door - front right side



Repainting 4: Door - front right side