

## Expertise

Protocol number: 39509825  
Order No. / Reference: 24626831  
Inspection date: 28 Apr 2025

Manufacturer: Audi

Model: Q5 40 TDI quattro S tronic

VIN: WAUZZZFY6L2110815



### Vehicle details

#### Manufacturer / Type / Model / Equipment

Audi Q5 40 TDI quattro S tronic

**Vehicle Identification number** WAUZZZFY6L2110815

**Mileage (Read)** 93,471 km

**First registration** 16 Oct 2020

**Number of holders** 1

**Next periodical technical inspection** 10/2025  
(Report not on hand)

**Power / Engine displacement** 150 kw / 1,968 ccm

**Fuel type / Cylinder** Hybrid Diesel / E / 4

**Gearbox / Number of gears** Automatic / 7

**Type of drive** All-wheel drive

**Type of vehicle** SUV

**Colour / colour code** Manhattangrau Metallic (X7L)

**Doors / Seats** 5 / 5

**Upholstery type** Leather

**Colour of upholstery** Black-Anthracite

**Re/Import** no

**driving readiness** Roadworthy



**Vehicle details**

<b>Maintenance booklet / proof</b>	digital proof / complete	<b>Next maintenance in</b>	21,600 km
<b>Last maintenance on / at</b>	01/2025 at 87,106 km		
<b>Key is / should be</b>	2 / 2	<b>FZG documents</b>	ZB#2 (B) was available (copy), ZB#1 (S) was not available
		<b>Letter No.</b>	FU648333
<b>Previous damage / Accident</b>	Detectable	<b>Repainting</b>	None detectable
<b>Inspection conditions</b>	Sufficient	<b>Lifting equipment / pit</b>	yes
<b>Test drive</b>	Not performed	<b>Engine function test</b>	Performed
<b>driving readiness</b>	Roadworthy		
<b>Manufacturer key number/ type code number</b>	0588 / BQW 00110		
<b>Emission standard</b>	EURO6;WLTP;DG;PI/CI; M, N1 I	<b>Fine dust sticker</b>	
<b>Permitted total weight</b>	2,510 kg	<b>Empty weight</b>	

**Tyres**

**Mounted tyres**

#	Tyre size	Type of tyre	Manufacturer	Tread depth
1)	235/65 R17 108H	Winter tyres on Light alloy	Bridgestone	2mm / 2mm
2)	235/65 R17 108H	Winter tyres on Light alloy	Bridgestone	4mm / 4mm

**Additional tyres**

#	Tyre size	Type of tyre	Manufacturer	Tread depth
1)	235/65 R17 104W	Summer tyres on Light alloy	Michelin	5mm / 5mm
2)	235/65 R17 104W	Summer tyres on Light alloy	Michelin	5mm / 5mm

**Replacement**

Typ	Tyre size	Type of tyre	Manufacturer	Tread depth
	Tirefit	Expiration date 05/2025		

**Legend: Tread depth information for tires on the left is in the first place, for tires on the right is in the second place on the axle in the direction of travel**



## Equipment

### Standard equipment

- AdBlue tank (12 liters)
- Airbag: Front side airbags and head airbag system
- all-wheel drive "quattro" with ultra technology
- Traction control (ASR)
- Audi drive select
- Audi pre sense city
- Exterior mirror housings in body color
- Fabric headliner
- roof rails black with roof rack detection
- Diesel particulate filter (DPF)
- Rear parking aid
- Electric auxiliary air heater
- Electronic differential lock (EDS)
- Driver Information System
- Electric windows front and rear
- radio key (without Safe-Lock)
- Luggage compartment lid, electrically opening and closing
- Transmission: S tronic 7-speed
- Rear window wiper
- Dimmable interior mirror
- ISOFIX and Top Tether child seat attachment for the outer rear seats
- Automatic air conditioning
- Headrests (3) rear
- Loading sill protection in plastic
- LED headlights
- Light/rain sensor
- Mild hybrid
- Model designation according to new performance labeling
- Wheel: Onboard tool (without jack)
- Wheel: Tire pressure monitoring indicator
- Radio: MMI Radio plus
- Power steering, electromechanical
- Seat covers in fabric synonym
- Seats: Rear seat backrest, split folding
- sun visor on the driver and passenger side
- Phone: Bluetooth interface
- bandages with warning triangle
- Electronic immobilizer
- Black trim strips
- Airbag for driver and front passenger
- Accent surfaces matt black
- Anti-lock braking system (ABS)
- Audi connect emergency call & service with Audi connect Remote & Control
- Exterior mirrors electrically adjustable and heated
- Hill descent assistant
- roof edge spoiler
- Micrometallic silver decorative inlays
- tachometer
- door sills with aluminum inserts at the front
- Electromechanical parking brake
- Electronic Stabilization Control (ESC)
- Chassis: Standard chassis
- Windscreen with acoustic glazing
- Floor mats front and rear
- Cruise control including speed limiter
- Heated rear window
- Interior lighting
- Manual parental control
- ISOFIX and Top Tether child seat anchorage for the outer rear seats
- trunk floor mat
- Front headrests
- LED rear lights
- Steering wheel: Leather steering wheel in 3-spoke design with multifunction
- Front center armrest
- Non-smoking version
- Wheel: Light alloy wheels, 17" 10-spoke
- Wheel: Tire repair kit
- Radio accessories: Data module Europe
- Seat belts
- Seats: Standard seats in the front
- Seats: Front seats manually adjustable
- Start-stop system
- Separation net
- Glazing: Clear glass
- Thermal insulation glazing

### Extra equipment



- Ambient lighting package (in addition to the standard interior lighting (LED): - Courtesy lighting in the exterior door handles - Entry lights on the underside of the front doors - Footwell lighting in the front - Illuminated interior door handles at the front and rear - Ambient lighting in the front and rear doors - Illuminated storage compartment below the instrument panel - Ambient lighting on the front center console)
- Camera-based traffic sign recognition (Supports the driver by displaying traffic signs recognized within the system limits, such as speed limits, no-overtaking signs and temporary speed limits that are in the detection range of the front camera. The traffic sign recognition is displayed automatically in the display of the digital instrument cluster or in the optional Audi virtual cockpit.)
- Chassis Sports suspension (with tighter suspension and damping for more direct road contact and sportier handling; stabilizer, rear axle support elastically mounted)
- Elimination of model name and performance/technology lettering
- Front seat heating (for driver and passenger side, individually adjustable in 3 stages via direct selection button on the climate control panel)
- Glazing: Windscreen with climate comfort/acoustic glazing, wirelessly heated (facilitates quick de-icing and prevents fogging by heating the entire windscreen without heating wires that impair visibility. With heated wiper blade storage, controlled via the comfort automatic climate control. In addition, the reflective coating on the windscreen prevents the interior from heating up in strong sunlight, thus reducing the energy consumption of the air conditioning system)
- High beam assistant (within the system limits, automatically detects headlights of oncoming traffic, tail lights of other road users and light sources in towns and cities. Depending on the traffic situation, the high beam is automatically switched on or off. The system thus improves the driver's visibility and increases comfort.)
- Parking Aid Plus (assists the driver with acoustic signals and a display when parking and maneuvering. The parking aid is activated by engaging reverse gear or via a button on the center console, or automatically when the distance to a detected object is less than 90 cm. Automatic activation can be switched on and off.)
- Radio accessories: Audi sound system (10 speakers including center speaker and subwoofer - 6-channel amplifier - total output of 180 watts)
- Radio accessories: USB charging interfaces for rear passengers (two USB-A charging interfaces for rear passengers in the rear center console)
- Steering wheel: Leather steering wheel in 3-spoke design with multifunction plus including steering wheel heating (with 14 multifunction buttons for convenient operation of the existing infotainment features such as audio skip, telephony, NAV button or steering wheel heating - adjustable in height and distance - with full-size airbag - paddle shifters for manual gear changes)
- 70 liter fuel tank with additional 24-liter AdBlue tank (larger tank for AdBlue solution)
- Airbag: Rear side airbags
- City Assistance Package (includes a selection of assistance systems specifically for city traffic - parking aid plus - rear view camera - lane change warning - Audi Pre sense basic - Audi Pre sense rear - exit warning and rear cross traffic assistant)
- Driver information system with color display (with high-resolution 7" color display - display contents: speed, time, mileage, outside temperature, fuel warning with remaining range, gear change recommendation, current radio station or music track, radio and media lists, telephone menu (in conjunction with multifunction steering wheel), information from navigation (if available). On-board computer with short and long-term memory - including break recommendation)
- Glazing: Acoustic glazing for front door windows (Front door windows with acoustic glazing provide improved exterior noise insulation.)
- Headrests: variable headrests for front seats (with manual adjustment of headrest height and distance)
- LED headlights: Matrix LED headlights with dynamic light staging and dynamic flashing light (multifunctional camera, headlight cleaning system, LED headlights front and rear with the following functionalities: - optically enhanced daytime running lights - dipped beam - high beam - position light - flashing light - cornering light - all-weather light - maneuvering light - motorway light - automatic dynamic headlight range control - dynamic cornering light)
- Loading sill protection in stainless steel
- Package Tour assistance package (adaptive cruise control - traffic jam assistant - predictive efficiency assistant - Audi pre sense city (series) - Audi pre sense front - evasive action assistant - turning assistant - camera-based traffic sign recognition - high beam assistant - Audi active lane assist)
- Paint finish: metallic
- Seats: Lumbar support pneumatically adjustable with massage function (The lumbar support provides support in the lumbar region through targeted ventilation and de-ventilation of three lumbar bladders and can be adjusted using the lumbar support button on the seat. The massage function in three different programs (wave, stretch, kneading) and three intensities can be switched on or off using the lumbar support button with integrated direct massage button. Programs and intensities can be adjusted via MMI. Massage duration approximately 10 minutes.)
- Stop assist (holds the vehicle for an unlimited period of time after stopping on inclines and declines common in road traffic.)



- Telephone: Audi Phone Box (same features as Audi phone box light; additional functions: including in-vehicle coupling antenna for connecting the mobile phone to the external antenna, thus low radiation in the vehicle interior and significantly improved reception quality; with LTE support)
- Trailer coupling (ball head mechanically pivoting with electrical release - ball rod and head made of forged steel - operated via button in the luggage compartment - trailer stabilization via the electronic stability control (ESC). The integrated pivoting system socket enables the continuous operation of electrical devices in the trailer or caravan while driving and can be pivoted invisibly behind the bumper apron when not in use)

### Brief expert findings

Documents submitted	At the time of the inspection, the registration certificate part 2 (letter) was available, but the registration certificate part 1 (certificate) was not available. (Copy)
VIN comparison	The vehicle identification number (VIN) was read and the undersigned verified that it matched the documents submitted during the inspection.
Inspection	The inspection conditions were sufficient to assess the vehicle. The inspection was carried out using the lighting conditions provided by the photo system included in the report. Lifting equipment and a pit were available for examining the vehicle.
Test drive	No test drive/maneuvering was carried out during the inspection of the vehicle.
Engine function test	An engine test run was performed.
driving readiness	At the time of the inspection, the vehicle was capable of driving and moving under its own power.

### Value reducing factors

No.	Component group	Description
1	Body	A-pillar - right side - Stone chips - Smart repair
2	Door - rear right side	Door - Dent / paintcoat damage - Smart repair
3	Wing mirror - right side	Mirror housing - Scratched - Replace
4	Side panel - rear right side	Side panel (Kratzer) - Dent / paintcoat damage - Repair and paint

### Wear and tear

No.	Component group	Description
1	Seat - front	Seat cover - left side - Worn - No deduction
2	Front bumper	Front bumper - Stone chips - No deduction
3	Door - front left side	Door edge - Scratched - No deduction
4	Trim / covers	Boot lid - interior trim - Scratched - No deduction
5	Vehicle glazing	Windscreen - Stone chips - No deduction
6	Rear bumper	Rear bumper - Scratched - No deduction
7	Boot lid / rear door	Boot lid - Scratch(es) - No deduction

The vehicle shows signs of wear commensurate with its age and use.

### Previous damages

No.	Previous damage	Extent of damage (Net)
1	Rear, Provided by user / customer, from 2 Oct 2024	1.074,89 €



## Order/Scope of order

The order was placed to prepare a sales report for the vehicle described. This includes the following:

- Description of core relevant information about the vehicle
- Documentation of equipment features  
*(Delivery by third-party service providers)*
- Documentation of damage, defects, missing parts
- Documentation of previous damage, unrepaired previous damage, repainting
- a brief visual or functional inspection of the equipment details if possible.  
*(Functional tests of driver assistance systems are not included in the scope of services!)*
- a photo documentation of the vehicle

## Basis for the order

This product is based on the Alphabet Fuhrpark GmbH guidelines for vehicle returns and valuations. The expert makes the explicit findings in each individual case objectively within the framework of the specified standards based on his or her own expertise.

The vehicle inspection takes place in a disassembled state.

Damage or defects that can only be detected during disassembly/diagnosis work or through advanced knowledge remain within the scope of the prognosis risk. An extended risk exists for concealed defects caused by fraudulent deception and not identifiable by the expert.

Damage or defects resulting from normal use or wear and tear of the vehicle will be accepted according to the applicable standard.

There was no explicit identification or monetary consideration of the expected features within the product.

Features which in their nature and severity slightly exceed normal use but do not constitute unacceptable damage will be documented and identified under signs of use if necessary.

Damage or defects which, according to the underlying standard, can no longer be attributed to normal use or wear and tear are listed in the product under "Depreciating Factors".

Depending on the product specification, a monetary ID can be provided. If this takes place, the costs can be 100% d or pro rata depending on the vehicle's age and mileage.

## Previous damages

According to available information previous damages were repaired at the vehicle. Traces of repairs, which allow conclusions about the area of repair, were not recognizable during the inspection.

## Comments

- Für den montierten Radsatz wurde kein Nachweiß erbracht.
- Winterradsatz ist kein Bestandteil des Auslieferungsumfangs.



Figure 1: Diagonal front (left)



Figure 2: Diagonal front (right)



Figure 3: Diagonal rear (left)



Figure 4: Diagonal rear (right)



Figure 5: Interior - front



Figure 6: Interior - rear



Figure 7: Instrument cluster



Figure 8: Instrument panel



Figure 9: interior 360° view ([Online link](#))



Figure 10: Cargo area

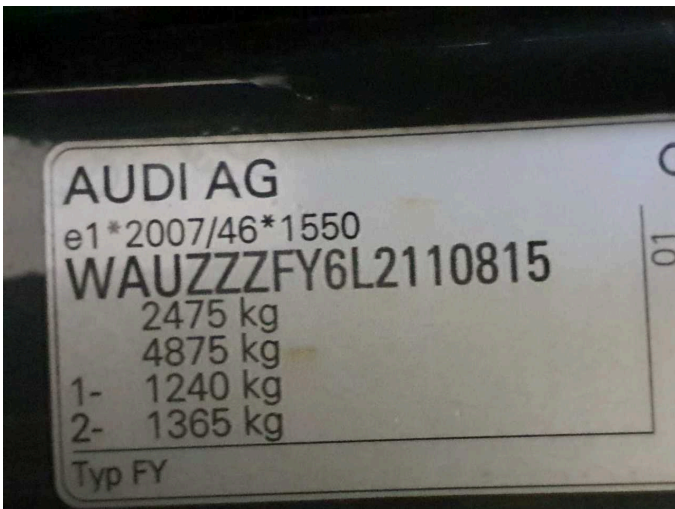


Figure 11: VIN



Figure 12: Mounted tyres





Figure 13: Documents



Figure 14: Additional tyres

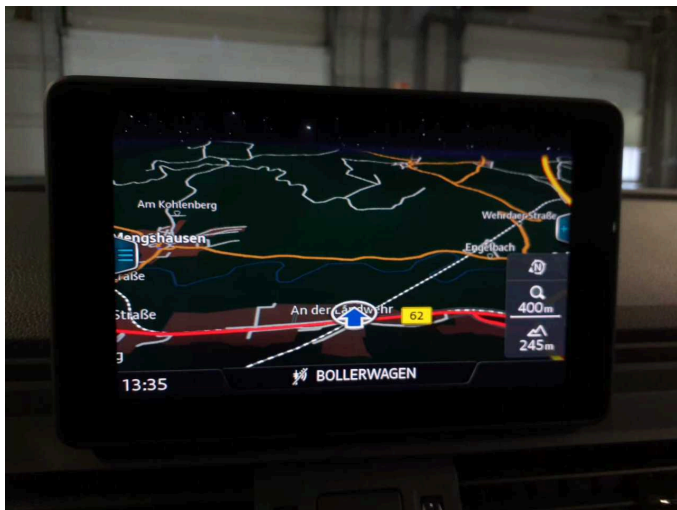


Figure 15: Navigation



Figure 16: Misc.



Figure 17: Misc.

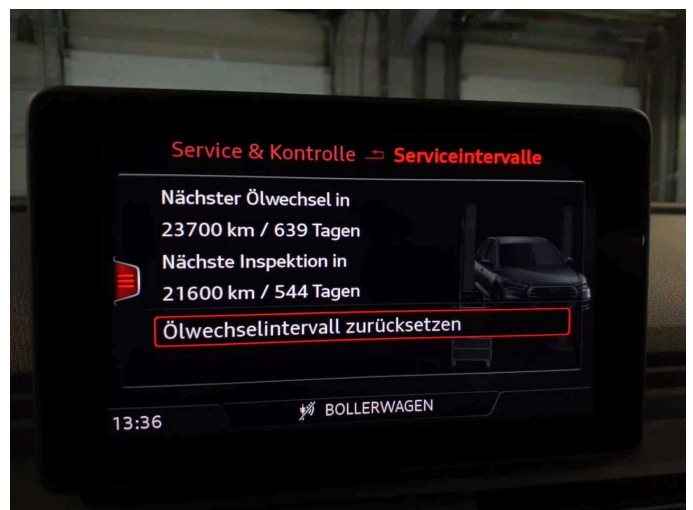


Figure 18: Misc.



Figure 19: Misc.



Figure 20: Misc.



Figure 21: Misc.



Figure 22: Misc.



Figure 23: Misc.



Figure 24: Misc.



Figure 25: Misc.

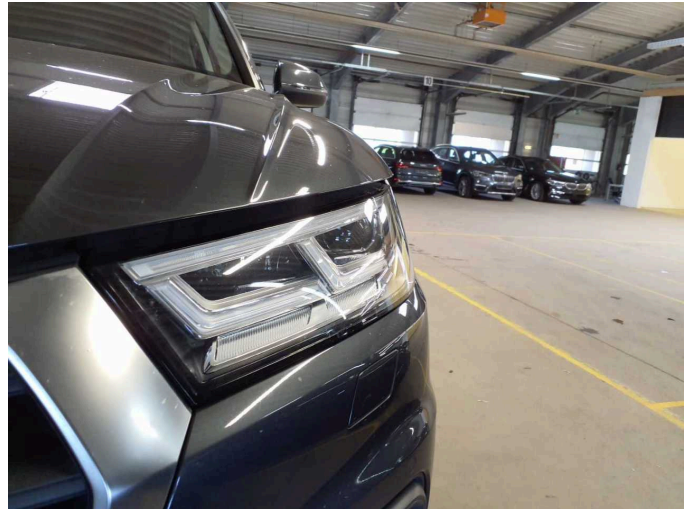


Figure 26: Misc.

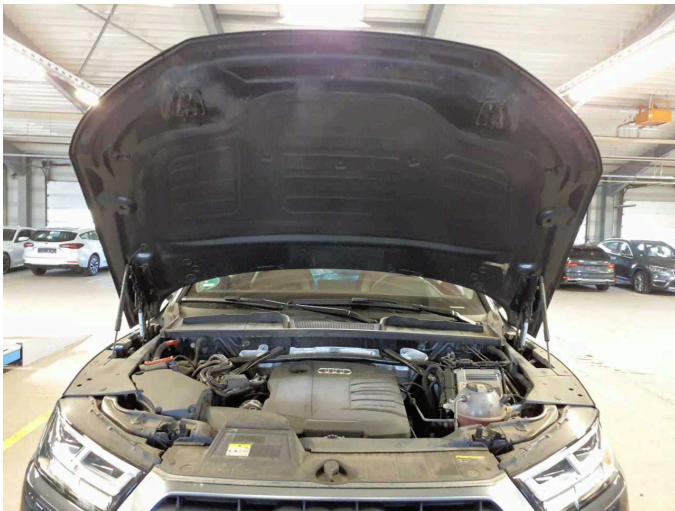


Figure 27: Misc.

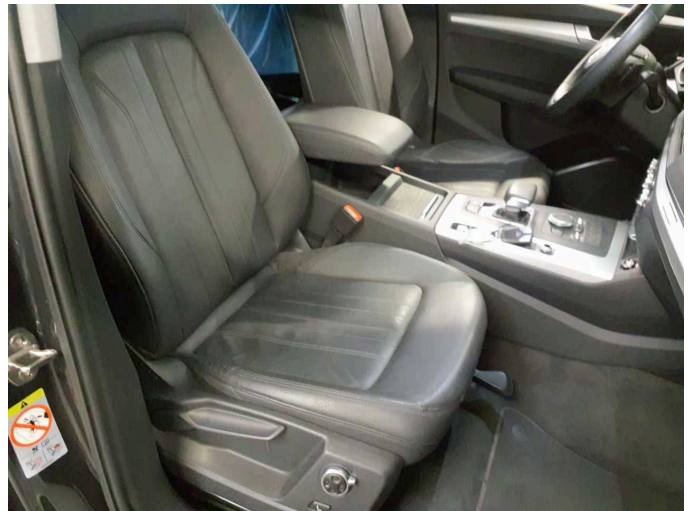


Figure 28: Misc.



Figure 29: Misc.



Figure 30: Misc.

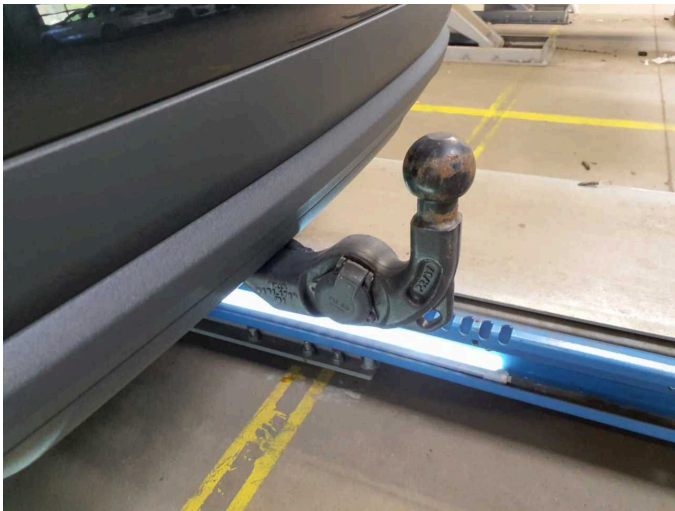


Figure 31: Misc.



Figure 32: Misc.

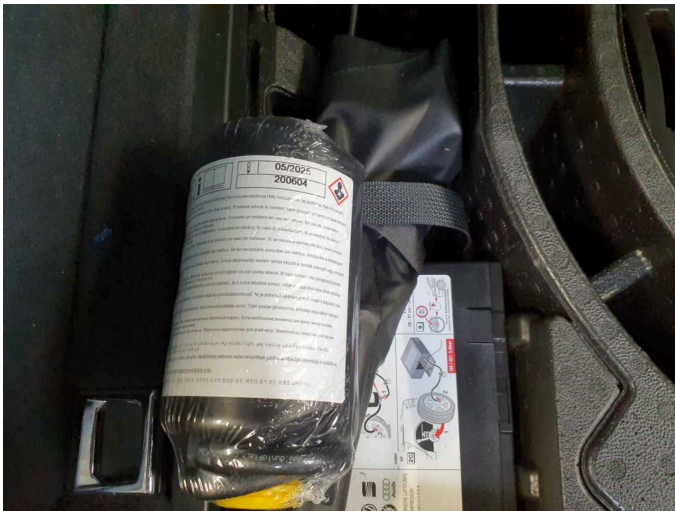
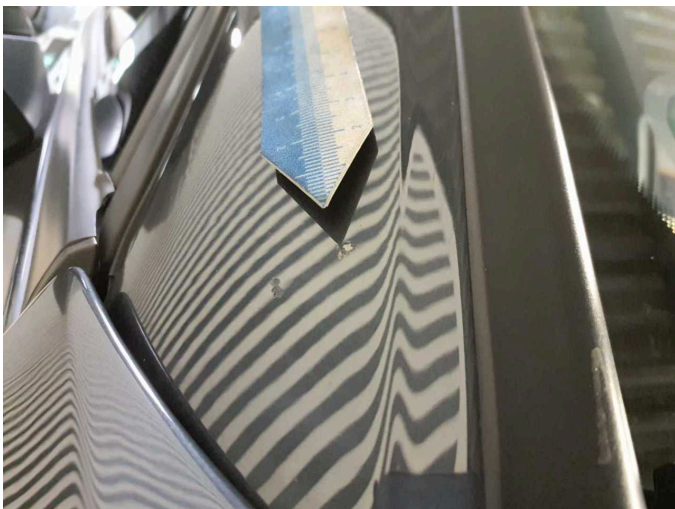


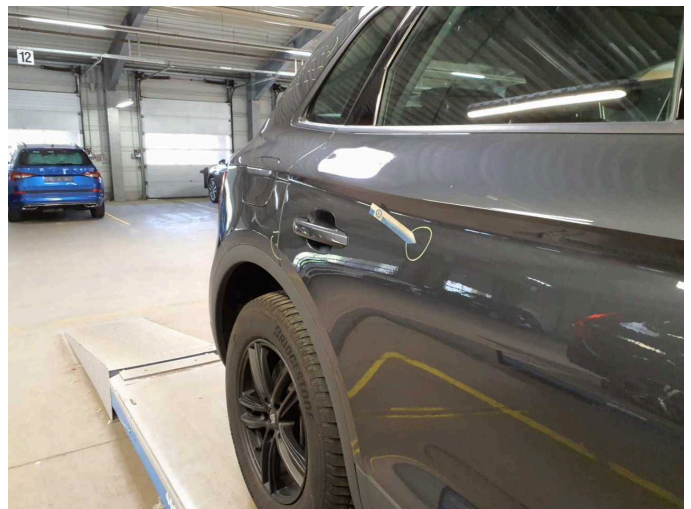
Figure 33: Misc.



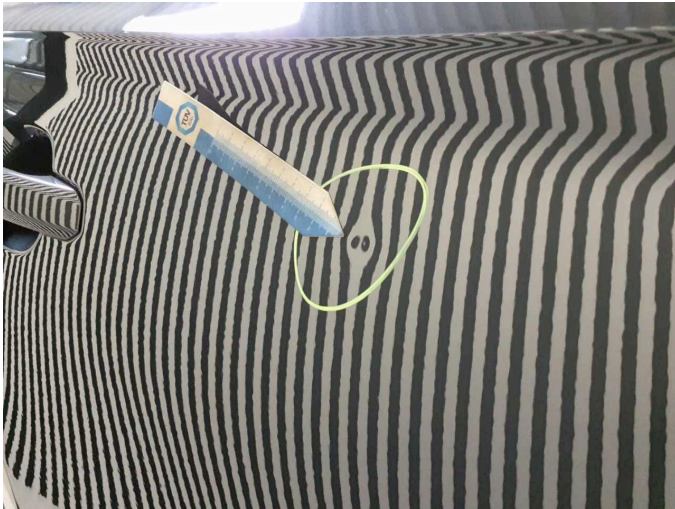
Damage 1: Body: A-pillar - right side - Stone chips - Smart repair



Damage 1: Body: A-pillar - right side - Stone chips - Smart repair



Damage 2: Door - rear right side: Door - Dent / paintcoat damage - Smart repair



**Damage 2:** Door - rear right side: Door - Dent / paintcoat damage - Smart repair



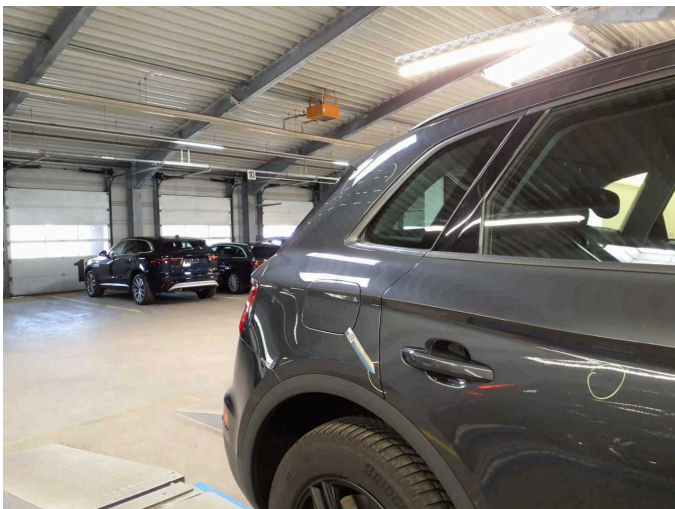
**Damage 3:** Wing mirror - right side: Mirror housing - Scratched - Replace



**Damage 3:** Wing mirror - right side: Mirror housing - Scratched - Replace



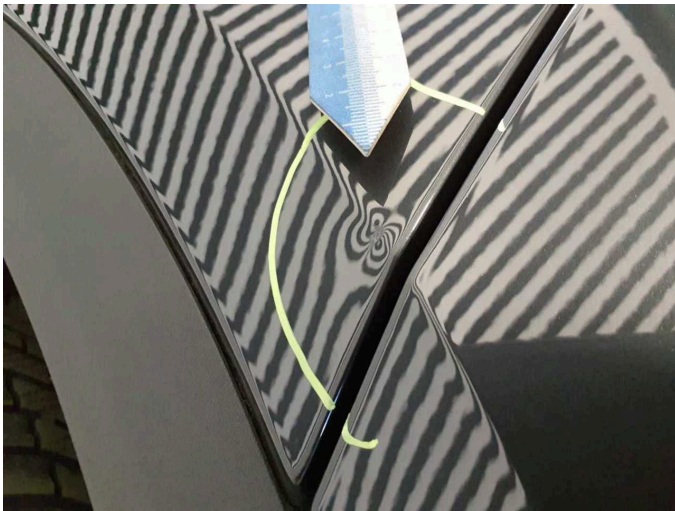
**Damage 3:** Wing mirror - right side: Mirror housing - Scratched - Replace



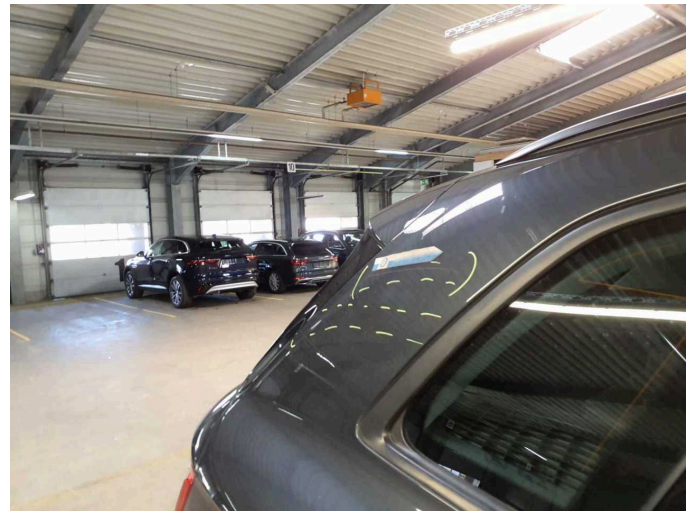
**Damage 4:** Side panel - rear right side: Side panel (Kratzer) - Dent / paintcoat damage - Repair and paint



**Damage 4:** Side panel - rear right side: Side panel (Kratzer) - Dent / paintcoat damage - Repair and paint



**Damage 4:** Side panel - rear right side: Side panel (Kratzer) - Dent / paintcoat damage - Repair and paint



**Damage 4:** Side panel - rear right side: Side panel (Kratzer) - Dent / paintcoat damage - Repair and paint



**Damage 4:** Side panel - rear right side: Side panel (Kratzer) - Dent / paintcoat damage - Repair and paint



**Damage 4:** Side panel - rear right side: Side panel (Kratzer) - Dent / paintcoat damage - Repair and paint