



Expertise

Protocol number: 41165252
Order No. / Reference: 25069405
Inspection date: 20 Aug 2025

Manufacturer: Audi	Model: Q5 50 TDI Sportback quattro tiptronic S line
VIN: WAUZZZFY4N2091927	



ALPHABET



ALPHABET

Vehicle details	
Manufacturer / Type / Model / Equipment	
Audi Q5 50 TDI Sportback quattro tiptronic S line	
Vehicle Identification number	WAUZZZFY4N2091927
Mileage (Read)	127,536 km
First registration	2 Jun 2022
Number of holders	1
Power / Engine displacement	210 kw / 2,967 ccm
Fuel type / Cylinder	Hybrid Diesel / E / 6
Gearbox / Number of gears	Automatic / 8
Type of drive	All-wheel drive
Type of vehicle	SUV
Colour / colour code	navarrablau metallic (X5H)
Doors / Seats	5 / 5
Upholstery type	Cloth / leather combination
Colour of upholstery	Black-Anthracite
Vehicle with smoke odor	no



Vehicle details

Maintenance booklet / proof	digital proof / complete	Next maintenance in	22,800 km
Last maintenance on / at	05/2025 at 120,276 km		
Key is / should be	2 / 2	FZG documents	ZB#2 (B) was available (copy), ZB#1 (S) was not available
		Letter No.	GJ096793
Previous damage / Accident	None detectable	Repainting	None detectable
Inspection conditions	sufficient	Lifting equipment / pit	yes
Test drive	short drive on the company premises	Engine function test	Performed
Manufacturer key number/ type code number	0588 / BYQ 00068		
Emission standard	EURO6;WLTP;AP;PI/CI; M, N1 I	Fine dust sticker	
Permitted total weight	2,645 kg	Empty weight	

Tyres

Mounted tyres

#	Tyre size	Type of tyre	Manufacturer	Tread depth
1)	235/55 R19 101W	Summer tyres on Light alloy	Continental	3mm / 3mm
2)	235/55 R19 101W	Summer tyres on Light alloy	Continental	4mm / 4mm

Additional tyres

#	Tyre size	Type of tyre	Manufacturer	Tread depth
1)	235/65 R17 104H	Winter tyres on Light alloy	Continental	8mm / 8mm
2)	235/65 R17 104H	Winter tyres on Light alloy	Continental	8mm / 8mm

Replacement

Typ	Tyre size	Type of tyre	Manufacturer	Tread depth
	Tirefit	Expiration date 03/2027		

Legend: Tread depth information for tires on the left is in the first place, for tires on the right is in the second place on the axle in the direction of travel

Equipment

Standard equipment

- AdBlue tank (12 liters) (tank for AdBlue solution to reduce nitrogen oxides in the exhaust gas using the SCR system)
- Airbags: Front side airbags and head airbag system (front side airbags integrated into the seat backrests. With head airbag system: unfolds in front of the side window area and thus protects front and outboard rear passengers in the event of a side impact.)
- Anti-lock braking system (ABS) (with electronic brake force distribution (EBD))
- Traction control (ASR)
- Audi drive select (adjustment of the vehicle characteristics in the available modes auto, comfort, dynamic, efficiency, allroad, offroad, and individual by adjusting the steering assistance, engine characteristics and gearshift characteristics, dynamic all-wheel steering, damper control, adaptive air suspension, sport differential, ultra technology, adaptive cruise control, matrix LED headlights, and setting of other optional equipment.)
- Audi pre sense city (An impending collision with vehicles and pedestrians can be detected within system limits at speeds up to approximately 85 km/h. In this case, the system warns the driver visually, acoustically, and, if necessary, with a sudden braking action. If necessary, it can initiate full deceleration to reduce the collision speed or, under certain circumstances, avoid the collision.)
- Third brake light (LED technology)
- Fabric headliner (in titanium grey or atlas beige, colour-coordinated with the respective interior colour)
- Diesel particulate filter (DPF)
- Rear parking aid (supports reverse parking within system limits by acoustically indicating the distance behind the vehicle to a detected object - measured by ultrasonic sensors, discreetly integrated into the bumper - activated by engaging reverse gear or via a separate button)
- Electronic differential lock (EDS)
- Electronic Stabilization Control (ESC)
- Suspension Sports Suspension (The sports suspension offers more direct road contact and sportier handling thanks to its tighter suspension and damping. The front axle is designed as a 5-link lightweight axle with shock absorbers, coil springs, a stabilizer bar, and an axle carrier firmly bolted to the body. The rear axle features a 5-link lightweight axle with independent wheel suspension, shock absorbers, coil springs, a stabilizer bar, and an elastically mounted axle carrier.)
- Electric windows front and rear
- Floor mats front and rear (velour in black)
- Airbag for driver and front passenger (with passenger airbag deactivation)
- Accent surfaces matt black (for air vents and center console insert)
- "quattro" all-wheel drive (permanent all-wheel drive with asymmetric dynamic torque distribution, self-locking center differential with wheel-selective torque control, driving situation-dependent distribution of drive power to each individual wheel for more controllable handling)
- Audi connect Emergency Call & Service with Audi connect Remote & Control (The Audi connect Emergency Call & Service services ensure a feeling of security on every journey. For example, in the event of a serious accident, an automatic emergency call is triggered to the Audi emergency call center. - Emergency Call & Service: Emergency call Online breakdown call Audi damage service Audi service appointment online - Remote & Control: Parking position Vehicle status Remote control Locking/unlocking Remote control Auxiliary heating Push notification Anti-theft alarm system)
- Electrically adjustable and heated exterior mirrors (with integrated LED indicators - mirror glass convex, flat or aspherical - including heated windscreen washer nozzles)
- Exterior mirror housings in body color
- Hill Descent Assist (enables controlled descent on steep slopes up to 30 km/h)
- Micrometallic silver decorative inlays (for dashboard, door panels and center console)
- tachometer
- Door sills with aluminum inserts at the front, illuminated, with S lettering
- Electromechanical parking brake (includes parking brake function when stationary, starting aid through automatic release when starting off and full deceleration while driving across all 4 wheels)
- Driver Information System (with high-resolution 5" monochrome display - display contents: speed, time, mileage, outside temperature, fuel warning with remaining range, gearshift recommendation for automatic transmission in manual mode, current radio station or music track, radio and media lists, phone menu, navigation information (if available), fuel consumption data, fuel-saving tips for economical driving, break recommendation - on-board computer with short- and long-term memory)
- Remote control key (without Safe-Lock) (unlocks and locks doors, luggage compartment and fuel tank flap - engine is started and stopped using the engine start/stop button - including convenient window opening/closing)



- Luggage compartment lid, electrically opening and closing (The luggage compartment lid can be opened electrically by pressing the button on the vehicle key, in the driver's door, or the soft-touch button on the luggage compartment lid handle. Closing the luggage compartment lid is just as easy and convenient as opening it: simply press the button on the inside of the luggage compartment lid, the button in the driver's door, or the button on the vehicle key. A closing aid makes manual closing easier when necessary.)
- Rear window wiper
- Dimmable interior mirror
- Manual parental control
- ISOFIX and Top Tether child seat attachment for the outer rear seats (holding device for the practical attachment of ISOFIX child seats with an additional upper attachment point (Top Tether) on the outer rear seats)
- Trunk floor mat
- Headrests (3) rear
- Front headrests
- Loading sill protection in stainless steel
- LED rear lights (indicator, brake, tail, reversing, and rear license plate lights in LED technology. - Brake lights in LED technology enable earlier detection by following traffic through faster activation. - Rear fog and reversing lights are housed in an additional light in the bumper; when the tailgate is open, the indicator, brake, and tail lights are also displayed there.)
- Steering wheel: 3-spoke leather steering wheel with multifunction plus (with 14 multifunction buttons for convenient operation of the existing infotainment features such as audio skip, telephony, NAV button, or the freely programmable button - adjustable in height and distance - with full-size airbag - shift paddles for manual gear changes)
- Front center armrest
- Model designation according to new performance labeling
- Non-smoking version (one 12-volt socket each at the front and rear - storage compartment at the front)
- Gloss package (roof frame and window channel strips in anodized aluminum)
- Wheel: Tire pressure monitoring indicator (visual and acoustic warning in case of pressure loss on one or more wheels - display in the driver information system)
- Radio: MMI Radio Plus (10.1" color display (1,540 × 720) including MMI touch operation - Driver information system with 5" mono display - Bluetooth interface (hands-free calling and audio streaming) - Audi music interface with 1 USB-A and 1 USB-C port, each with data and charging functions - 8 passive speakers, 4 front - 4 rear - AM/FM phase diversity - speed-dependent volume adjustment - Voice dialogue system with natural language for controlling infotainment and vehicle functions - Wi-Fi hardware - DAB+)
- Seats: Standard seats in the front
- Cruise control system including speed limiter (maintains the desired speed from approximately 20 km/h, provided the engine power or engine braking effect allows it. Adjustable speed limiter allows individual limitation of the maximum speed, e.g., within built-up areas)
- Transmission: tiptronic (8-speed)
- Heated rear window
- Interior lighting (roof module including reading lights for driver and front passenger - capacitive operation - reading lights in the rear - illuminated center console - illuminated vanity mirror at the front - glove compartment light - passive door warning lights - trunk light on the left and right - approach lighting on the right in the tailgate)
- Automatic climate control (1-zone - electronically regulates air temperature, air flow, and distribution, sun position-dependent control - air distribution can be adjusted using 5 main settings - 3 LEDs integrated into the seat heating or seat ventilation button provide feedback on the selected setting (optional) - buttons for defrosting the front and rear windows - manual air recirculation control - with key recognition and humidity sensor - dust and odor-separating interior filter)
- LED headlights (visually enhanced daytime running lights - low beam - high beam - position light - indicator light - cornering light (supplements side illumination when turning) - all-weather light (to reduce glare in poor visibility conditions) - automatic dynamic headlight range control)
- Light/rain sensor (to control the automatic headlights, windshield wipers, and the coming-home/leaving-home function)
- Mild hybrid (Mild hybrid features an enhanced start-stop function, enhanced energy recovery during braking (recuperation) to charge the starter battery, and additional lithium-ion storage. This allows the system to recover more energy and shuts off the engine more frequently. A supplementary belt starter generator (BSG) is provided for mild hybrid. Purely electric driving is not possible.)
- Wheel: On-board tool kit (without jack)
- Wheel: Tire repair kit (with 12-volt compressor and tire sealant in the luggage compartment, maximum permissible speed 80 km/h)
- Radio accessories: Data module Europe
- Electromechanical power steering (maintenance-free rack-and-pinion steering with speed-sensitive steering assistance; precise steering feel at high speeds, excellent parking assistance.)
- Seat belts (with belt height adjustment and seat belt reminder for all seats. Audible and visual warning signals remind passengers to fasten their seat belts in the front. A visual warning signal alerts passengers to unfasten the seat belts in the rear.)
- Seats: Rear seat backrest, split-folding (split, 40:20:40 or fully foldable, with center armrest - including four lashing eyes in the luggage compartment for securing luggage and objects, attachment points for the luggage compartment net)



- Seats: Front seats manually adjustable (with manual adjustment of seat height, seat length, backrest angle, headrest and belt height)
- front sun visor
- Start-stop system
- Partition net (to be attached to the body or to the folded-down rear seat backrest, useful when the rear seat backrest is raised or folded down on one side, or completely folded down; removable)
- First aid kit with warning triangle (warning triangle in the trunk - first aid kit in the trunk - 2 safety vests in the door pockets)
- Glazing: Clear glass
- Electronic immobilizer (integrated into the engine control unit, automatic activation via vehicle key)
- Heat-insulating glazing (green tinted - for rear window, door and side windows - rear window heated, with timer)

Extra equipment

- Trailer coupling (mechanically pivoting ball head with electric release - ball bar and ball head made of forged steel - operated via button in the luggage compartment - trailer stabilization via the Electronic Stability Control (ESC). The integrated pivoting system socket allows continuous operation of electrical devices in the trailer or caravan while driving and can be pivoted invisibly behind the bumper apron when not in use.)
- Driver information system with color display (with high-resolution 7" color display - display contents: speed, time, mileage, outside temperature, fuel warning with remaining range, gear shift recommendation, current radio station or music track, radio and media lists, phone menu, information from navigation (if available), driver assistance system notifications, break recommendation, fuel consumption data, fuel-saving tips for economical driving - on-board computer with short- and long-term memory)
- Stop assist (holds the vehicle for an unlimited period of time after stopping on normal road gradients and inclines).
- Camera-based traffic sign recognition (Supports the driver by displaying traffic signs detected within the system's limits, such as speed limits, no-overtaking zones, and temporary speed limits that are within the detection range of the front camera. The traffic sign recognition is displayed automatically on the digital instrument cluster display or in the optional Audi virtual cockpit.)
- Comfort center armrest in the front (adjustable in inclination and longitudinally movable or completely foldable)
- Paint finish: metallic
- Storage and luggage compartment package (flexible transport of items and comfort while traveling; consisting of: - storage net on the back of the front seat backrests - cup holder in the rear center armrest - storage compartment on the driver's side - lockable glove compartment in the luggage compartment - luggage compartment net - net in the left-hand recess - tensioning strap on the luggage compartment side (not for SQ5 Sportback))

- Phone: Bluetooth interface (The smartphone can be connected to the vehicle via Bluetooth to play music or make phone calls. Depending on the smartphone model, emails and text messages can also be displayed in the MMI via Bluetooth.)
- Glazing: Windscreen with thermal and acoustic glazing (windscreen with thermal glazing, green tinted - improved exterior noise insulation)
- Glazing: Side and rear windows with heat-insulating glazing (for rear window, door and side windows - green tinted - rear window heated, with timer)
- Central locking with radio remote control

- Headlining in black fabric
- Roof rails in aluminum with roof rack detection
- Matt brushed aluminum decorative inlays (for dashboard, door panels and center console)
- Parking Aid Plus (assists the driver with acoustic signals and a display when parking and maneuvering. The parking aid is activated by engaging reverse gear or via a button on the center console, or automatically when the distance to a detected object is less than 90 cm. Automatic activation can be switched on and off.)
- High Beam Assistant (within the system's limits, it automatically detects the headlights of oncoming traffic, the taillights of other road users, and light sources in built-up areas. Depending on the traffic situation, the high beam is automatically switched on or off. The system thus improves the driver's visibility and increases comfort.)
- Garage door opener (A control/transmitter unit integrated into the new operating concept is used for remote control of garage and outdoor doors, as well as for radio-controlled security systems and lighting systems. This radio remote control is freely programmable. Touchscreen fields for operation can be individually named. A total of up to eight different garage and outdoor doors or radio-controlled security systems and lighting systems can be saved. In conjunction with MMI navigation plus)
- Convenience key (without Safelock) (provides control for access and engine start authorization without the need to actively operate the vehicle key. With the electronic access and drive-away authorization system, you can open your vehicle's doors and trunk lid via wireless communication between the key and the vehicle, and lock it using the sensors on the door handles. The convenience key must be carried for this. The engine is started and stopped using the engine start/stop button.)
- City Assistance Package (includes a selection of assistance systems specifically for city traffic - parking aid plus - rear view camera - lane change warning - Audi Pre sense basic - Audi Pre sense rear - exit warning and rear cross traffic assistant)



- Tour assistance package (adaptive cruise control - traffic jam assistant - Audi active lane assist - predictive efficiency assistant - Audi pre sense front - evasive maneuver assistant - left turn assistant - high beam assistant - camera-based traffic sign recognition)
- S line interior package (front sports seats - black fabric/leather combination with S embossing on the front seat backrests - 3-spoke leather steering wheel with black multifunction plus (perforated leather steering wheel grips) with S emblem; with contrasting stitching, color-coordinated with the respective interior color; with shift paddles - matt brushed aluminum trim inserts - glossy black accent panels - door sills with illuminated aluminum inserts at the front - stainless steel pedals and footrest (not for plug-in hybrid) - floor mats at the front and rear - black fabric headliner)
- Seat covers in Dinamica Frequenz microfiber/leather with S-embossing (seat center panel in Frequenz microfiber - seat side bolsters, headrest center panel and center armrest in black or rotor gray leather with contrasting stitching - S-embossing in the front seat backrests - rear center armrest support surface in synthetic leather)
- Seats: Electrically adjustable front seats with memory function for the driver's seat and exterior mirrors (4-way lumbar support for the front seats - exterior mirrors electrically adjustable, heated, and folding, with automatic dimming on both sides, with memory function - electrically adjustable front seats with memory function for the driver's seat)
- Telephone: Smartphone Interface in conjunction with the Business Package or MMI Navigation (The smartphone interface (Android Auto and Apple CarPlay) connects your smartphone to your Audi and seamlessly displays your smartphone content directly on the MMI display via USB. Navigation, telephony, music, and selected third-party apps can be conveniently controlled via the MMI touch display and via voice control on your smartphone. The connection can be established either via a suitable USB cable or wirelessly.)
- Business package (Audi phone box - MMI navigation plus (including driver information system with color display) - Audi virtual cockpit - heated front seats - automatically dimming interior mirror - electrically adjustable, heated, and folding exterior mirrors, automatically dimming on both sides including automatic curbside assistance for the passenger mirror - high beam assist - manual sunblind for the rear door windows)
- Wheel: Light alloy wheels, 19" 5-twin-spoke star (S-Design), high-sheen (8.0 J x 19, tires 235/55 R 19)
- Radio accessories: Audi sound system (10 speakers including center speaker and subwoofer - 6-channel amplifier - total output of 180 watts)
- Radio accessories: USB charging interfaces for rear passengers (two USB-A charging interfaces for rear passengers in the rear center console)
- Seats: Rear seat bench plus (including longitudinal adjustment and backrest angle - fold-out center armrest with 2 cup holders - rear seat backrest can be split 40:20:40 or folded down completely - includes through-loading facility - remote backrest release in the luggage compartment for the two outer backrest sections (no separate remote release for the smaller center section) - rear L-shaped headrests, manually adjustable)
- Front seat heating (for driver and passenger side, individually adjustable in 3 stages via direct selection button on the climate control panel)
- Telephone: Audi Phone Box (same features as Audi phone box light; additional functions: The Audi phone box includes: -Bluetooth interface -Hands-free system -Coupling antenna for connecting the mobile phone to the external antenna for improved reception quality and lower cell phone radiation in the vehicle interior -LTE support - Charging option via USB port or wireless charging (Qi standard) - Forget-the-phone warning -Charging status display in the MMI touch display)
- Glazing: Sun protection glazing tinted (rear window, rear door and side windows tinted)

Brief expert findings

Documents submitted	At the time of the inspection, the registration certificate Part 2 (letter) was available, but the registration certificate Part 1 (certificate) was not. (Copy)
VIN comparison	The vehicle identification number (VIN) was read from the vehicle and its conformity with the submitted documents was verified during the inspection by the undersigned.
Inspection	The inspection conditions were sufficient for the assessment of the vehicle. Lifting equipment and a pit were available for examining the vehicle.
Test drive	A short maneuvering and shunting trip was carried out on the company premises.
Engine function test	An engine test run was performed.

Value reducing factors

No.	Component group	Description
1	Misc.	Main inspection - No evidence - No deduction



No.	Component group	Description
2	Wing mirror - right side	Cap - Scratch(es) - Paint
3	Mudguard - right side	Wheel well extension - Scratched - Smart repair
4	Side panel - rear right side	Wheel well extension - Scratch(es) - Smart repair
5	Rear bumper	Bumper - rear right side - Scratch(es) - Smart repair
6	Side panel - rear left side	Wheel well extension - Scratch(es) - Smart repair
7	Door - rear left side	Door - Scratch(es) - Smart repair
8	Trim / covers	Door trim - rear right side (Zierleiste) - Scratch(es) - Replace
9	Trim / covers	Boot lid - interior trim - Scratch(es) - Replace
10	Rear bumper	Rear bumper - Scratched - Paint
11	Rear bumper	Spoiler - Scratch(es) - Replace
12	Front bumper	Front bumper - Scratched - Paint
13	Mudguard - right side	Mudguard - right side - Scratched - Paint

Wear and tear

No.	Component group	Description
1	Door - front right side	Door (Polieren) - Scratch(es) - No deduction
2	Door - front left side	Brightware - lower - Scratch(es) - No deduction
3	Body	Body - Scratch(es)
4	Bonnet	Bonnet - Stone chips - No deduction
5	Door - rear left side	Door - dent(s) - Smooth repair work

The vehicle shows signs of wear commensurate with its age and use.

Order/Scope of order

The order was placed to prepare a sales report for the vehicle described. This includes the following:

- Description of core relevant information about the vehicle
- Documentation of equipment features
(*Delivery by third-party service providers*)
- Documentation of damage, defects, missing parts
- Documentation of previous damage, unrepaired previous damage, repainting
- a brief visual or functional inspection of the equipment details if possible.
(*Functional tests of driver assistance systems are not included in the scope of services!*)
- a photo documentation of the vehicle



Basis for the order

This product is based on the Alphabet Fuhrpark GmbH guidelines for vehicle returns and valuations. The expert makes the explicit findings in each individual case objectively within the framework of the specified standards based on his or her own expertise.

The vehicle inspection takes place in a disassembled state.

Damage or defects that can only be detected during disassembly/diagnosis work or through advanced knowledge remain within the scope of the prognosis risk. An extended risk exists for concealed defects caused by fraudulent deception and not identifiable by the expert.

Damage or defects resulting from normal use or wear and tear of the vehicle will be accepted according to the applicable standard.

There was no explicit identification or monetary consideration of the expected features within the product.

Features which in their nature and severity slightly exceed normal use but do not constitute unacceptable damage will be documented and identified under signs of use if necessary.

Damage or defects which, according to the underlying standard, can no longer be attributed to normal use or wear and tear are listed in the product under "Depreciating Factors".

Depending on the product specification, a monetary ID can be provided. If this takes place, the costs can be 100% d or pro rata depending on the vehicle's age and mileage.

Previous damages

Apparently, no repaired previous damage could be found on the vehicle.



Figure 1: Diagonal front (left)



Figure 2: Diagonal front (right)



Figure 3: Diagonal rear (left)



Figure 4: Diagonal rear (right)



Figure 5: Interior - front



Figure 6: Interior - rear



Figure 7: Instrument cluster



Figure 8: Instrument panel



Figure 9: interior 360° view



Figure 10: Cargo area

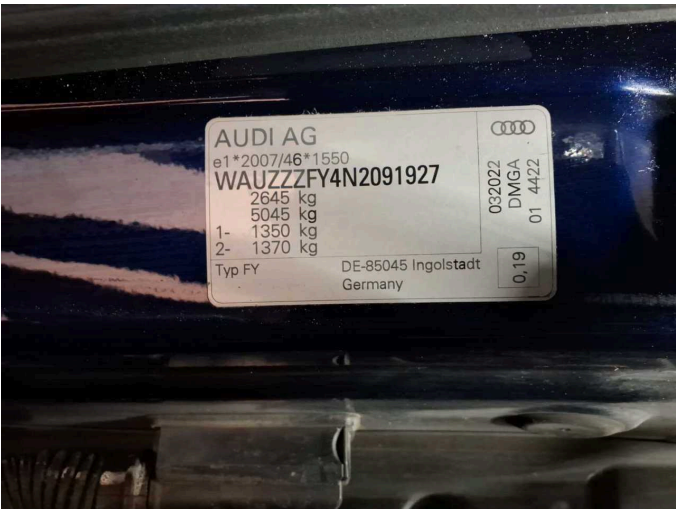


Figure 11: VIN



Figure 12: Mounted tyres

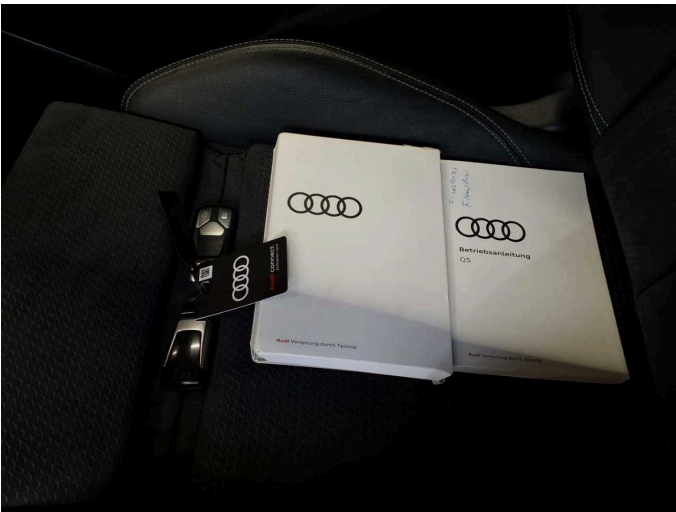


Figure 13: Documents



Figure 14: Documents

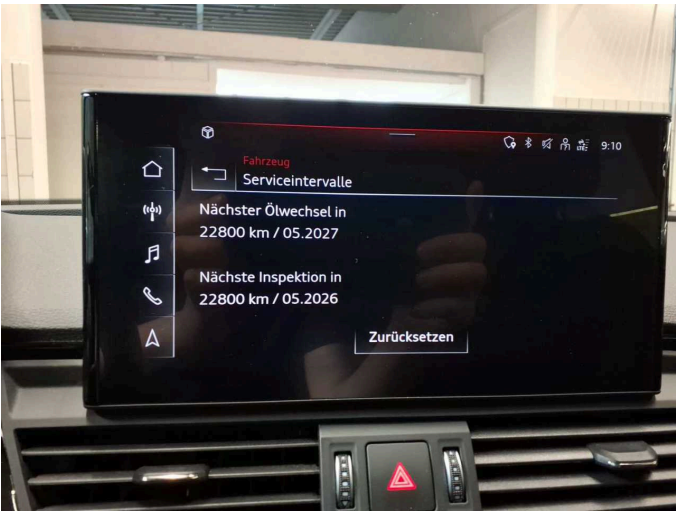


Figure 15: Documents



Figure 16: Additional tyres



Figure 17: Navigation

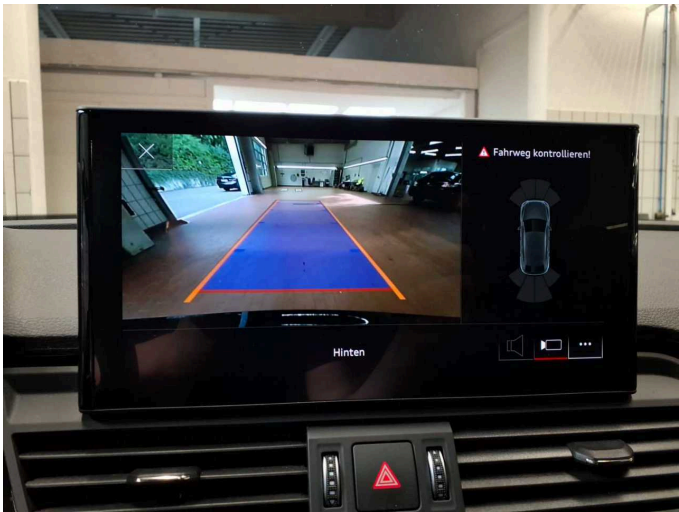


Figure 18: Misc.



Figure 19: Misc.



Figure 20: Misc.

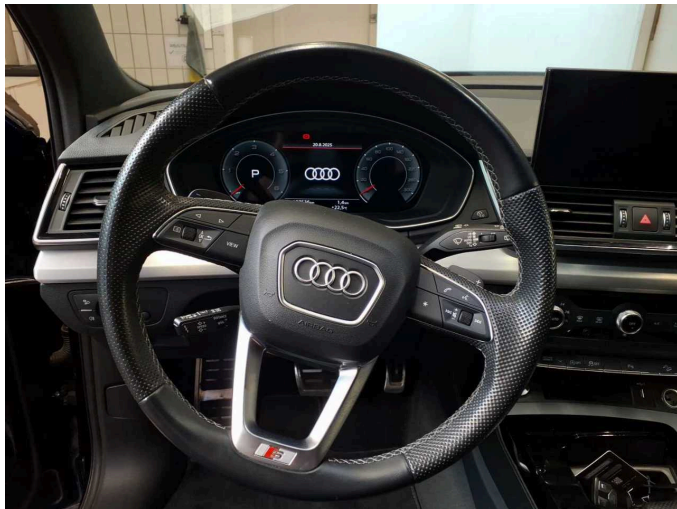


Figure 21: Misc.



Figure 22: Misc.



Figure 23: Misc.



Figure 24: Misc.



Figure 25: Misc.



Figure 26: Misc.

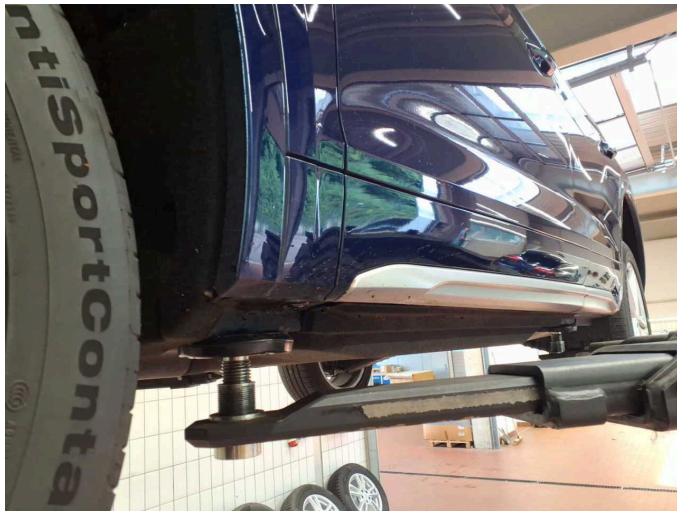


Figure 27: Misc.



Figure 28: Misc.



Figure 29: Misc.



Figure 30: Misc.



Figure 31: Misc.



Figure 32: Misc.

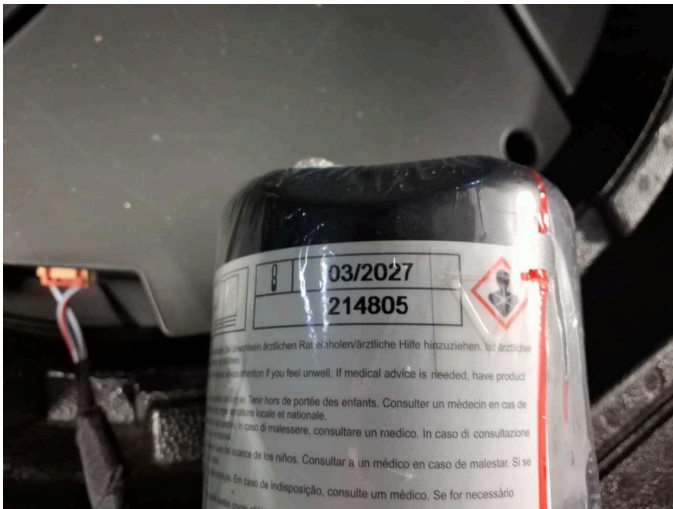
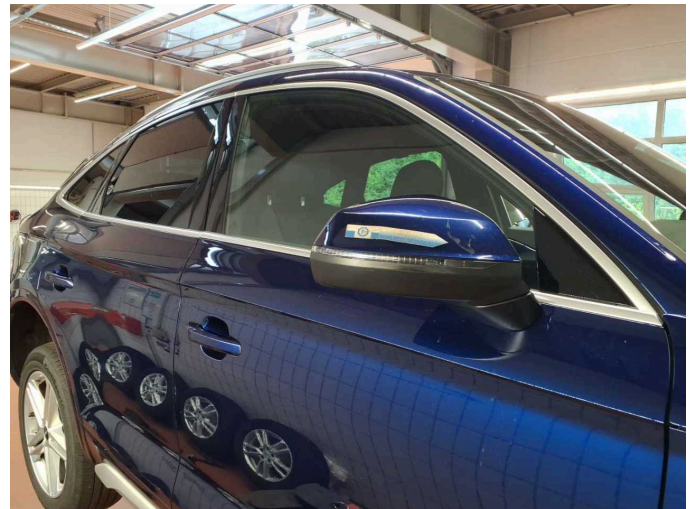


Figure 33: Misc.



Damage 2: Wing mirror - right side: Cap - Scratch(es) - Paint



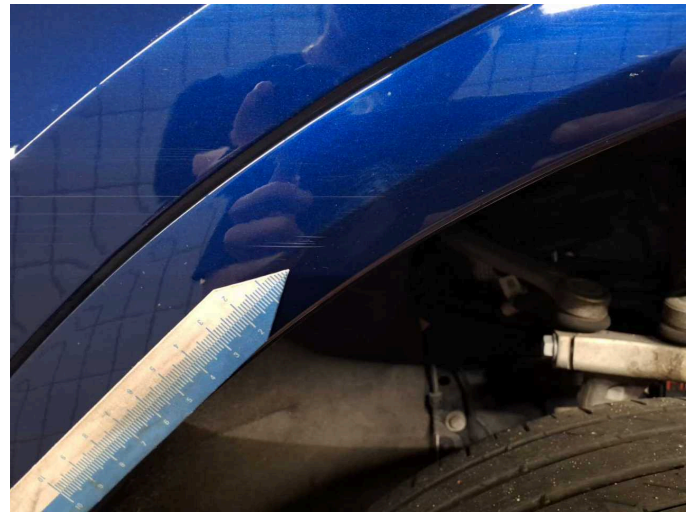
Damage 2: Wing mirror - right side: Cap - Scratch(es) - Paint



Damage 2: Wing mirror - right side: Cap - Scratch(es) - Paint



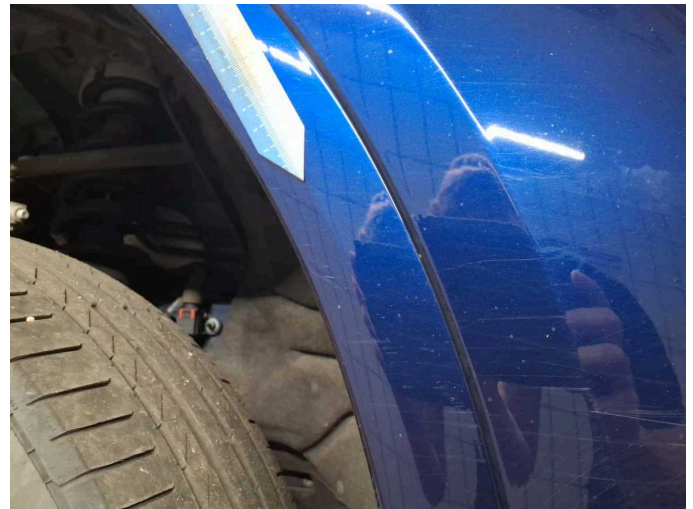
Damage 3: Mudguard - right side: Wheel well extension - Scratched - Smart repair



Damage 3: Mudguard - right side: Wheel well extension - Scratched - Smart repair



Damage 3: Mudguard - right side: Wheel well extension - Scratched - Smart repair



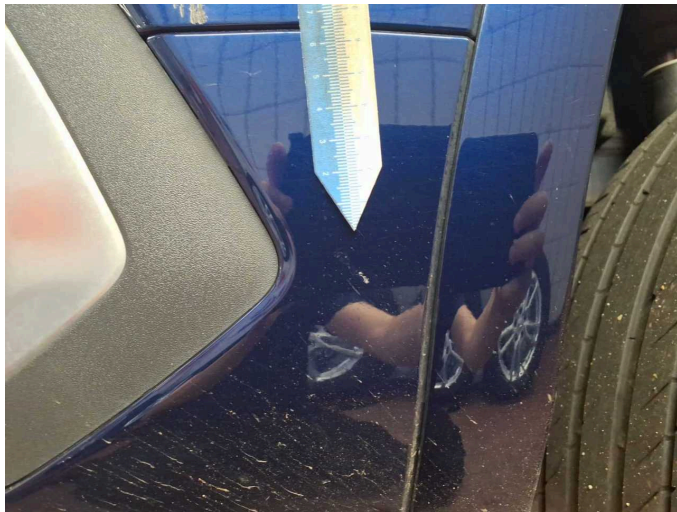
Damage 3: Mudguard - right side: Wheel well extension - Scratched - Smart repair



Damage 4: Side panel - rear right side: Wheel well extension - Scratch(es) - Smart repair



Damage 4: Side panel - rear right side: Wheel well extension - Scratch(es) - Smart repair



Damage 5: Rear bumper: Bumper - rear right side - Scratch(es) - Smart repair



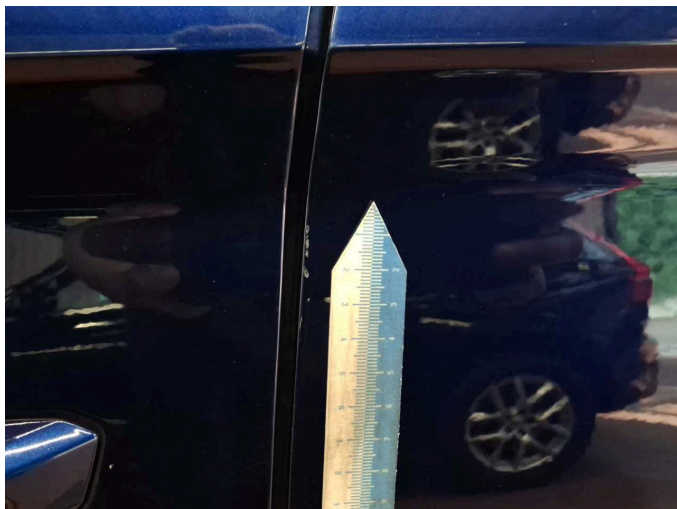
Damage 5: Rear bumper: Bumper - rear right side - Scratch(es) - Smart repair



Damage 6: Side panel - rear left side: Wheel well extension - Scratch(es) - Smart repair



Damage 6: Side panel - rear left side: Wheel well extension - Scratch(es) - Smart repair



Damage 7: Door - rear left side: Door - Scratch(es) - Smart repair



Damage 7: Door - rear left side: Door - Scratch(es) - Smart repair



Damage 8: Trim / covers: Door trim - rear right side (Zierleiste) - Scratch(es) - Replace



Damage 8: Trim / covers: Door trim - rear right side (Zierleiste) - Scratch(es) - Replace



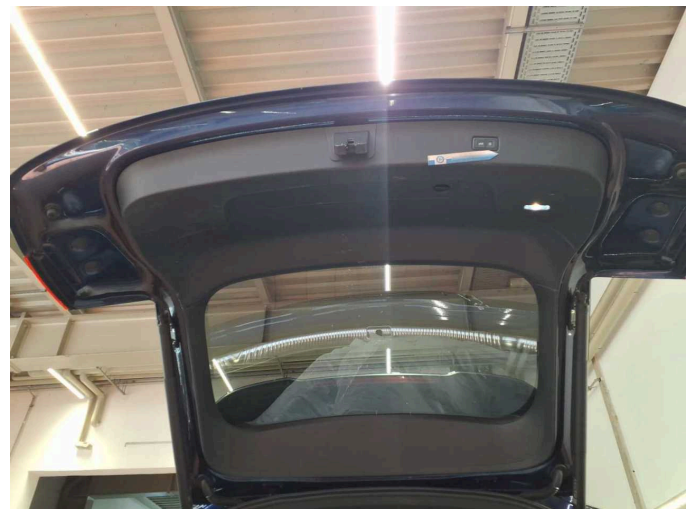
Damage 9: Trim / covers: Boot lid - interior trim - Scratch(es) - Replace



Damage 9: Trim / covers: Boot lid - interior trim - Scratch(es) - Replace



Damage 9: Trim / covers: Boot lid - interior trim - Scratch(es) - Replace



Damage 9: Trim / covers: Boot lid - interior trim - Scratch(es) - Replace



Damage 10: Rear bumper: Rear bumper - Scratched - Paint



Damage 10: Rear bumper: Rear bumper - Scratched - Paint



Damage 10: Rear bumper: Rear bumper - Scratched - Paint



Damage 10: Rear bumper: Rear bumper - Scratched - Paint



Damage 10: Rear bumper: Rear bumper - Scratched - Paint



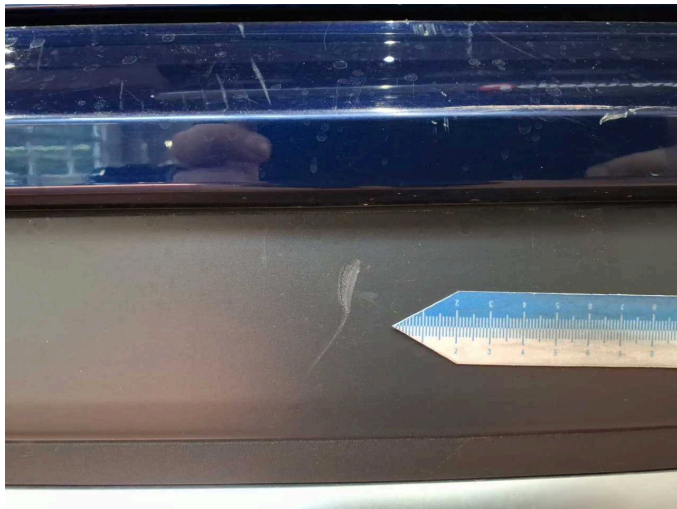
Damage 10: Rear bumper: Rear bumper - Scratched - Paint



Damage 10: Rear bumper: Rear bumper - Scratched - Paint



Damage 11: Rear bumper: Spoiler - Scratch(es) - Replace



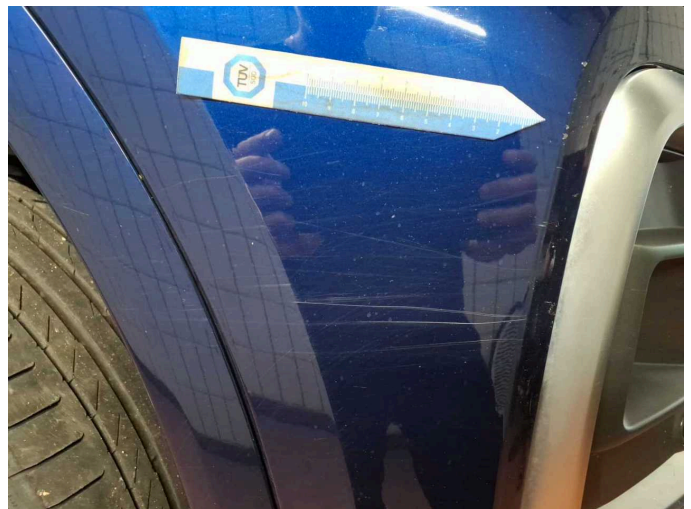
Damage 11: Rear bumper: Spoiler - Scratch(es) - Replace



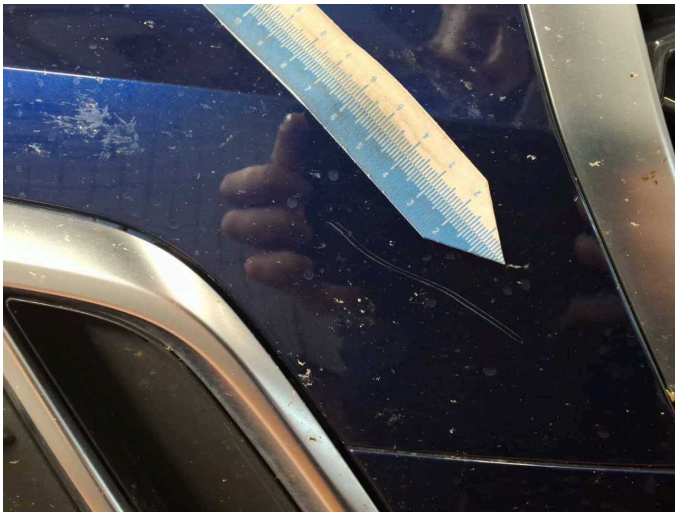
Damage 12: Front bumper: Front bumper - Scratched - Paint



Damage 12: Front bumper: Front bumper - Scratched - Paint



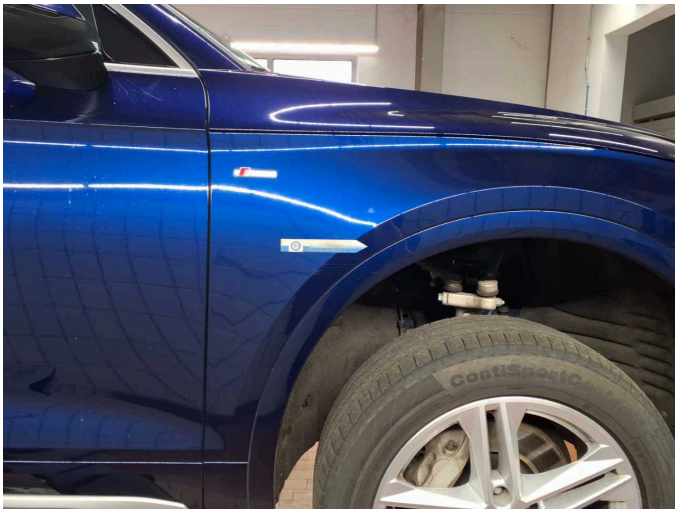
Damage 12: Front bumper: Front bumper - Scratched - Paint



Damage 12: Front bumper: Front bumper - Scratched - Paint



Damage 12: Front bumper: Front bumper - Scratched - Paint



Damage 13: Mudguard - right side: Mudguard - right side - Scratched - Paint



Damage 13: Mudguard - right side: Mudguard - right side - Scratched - Paint



Wear and tear 5: Door - rear left side: Door - dent(s) - Smooth repair work



Wear and tear 5: Door - rear left side: Door - dent(s) - Smooth repair work



Wartungshistorie

(gemäß Auftraggeber Informationen)

Fahrgestellnummer: WAUZZZFY4N2091927

Hersteller / Modell: AUDI AUDI Q5 50 TDI Sportback quattro tiptronic S line

Datum	KM-Stand	Beschreibung
13.05.2025	120.276	Kraftstofffilter ern; Luftfiltereinsatz ern; Motoröl b. Wartung; Ölfilter ern; Regelwartungsdienst; Reparatur Sonstiges; Wartung Sonstiges
23.07.2024	90.606	Motoröl b. Wartung; Ölfilter ern; Regelwartungsdienst; Wartung Sonstiges
15.05.2024	81.396	Bremsflüssigkeit; Bremsflüssigkeit ern
03.11.2023	59.115	Bremsbelagfühler ern; Bremsscheiben + Klötze h; Bremsscheiben + Klötze v; Kraftstofffilter ern; Luftfiltereinsatz ern; Motoröl b. Wartung; Regelwartungsdienst
21.02.2023	29.958	Motoröl b. Wartung; Regelwartungsdienst