



AUDI Q5 Sportback

Q5 50 TDI Sportback quattro tiptronic

VIN NO WAUZZZFY1N2073997
Registration Number Y1N2073997



| | | | |
|--------------|----------------------|-------------------------|--------------------------|
| MOT Date | Number of Owners | Number of Keys | Odometer Reading |
| 2025-06-01 | 1 | 2 | 92433 km |
| Last Service | Last Service Mileage | First Registration Date | Country First Registered |
| - | - | 2022-06-14 | Germany |

Inspection Report Summary

| | | | |
|-------------------------|------------------------|----------------|-----------------|
| Customer | BCA Online | Report Number | P20250926114544 |
| Inspection Date / Place | 2025-09-26 / BCA Neuss | Cosmetic Grade | 1 |

Vehicle Summary

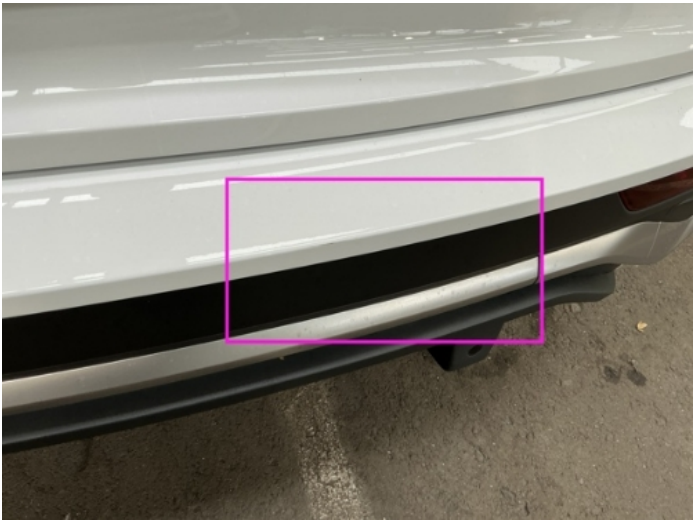
| | | | |
|--------------------|-----------|--------------------|---------------------------|
| Vehicle Condition | Runner | VAT Type | Qualifying |
| Fuel Type | Diesel | Road Worthy | Yes |
| Colour | White | Engine Size (cc) | 2967 |
| Engine Size | 3.0 | No of Doors | 5 |
| Body Type | SUV | Drive Train | All-Wheel-Drive permanent |
| Seat Colour | | No of Seats | 5 |
| Seat Covering Name | schwarz | Seat Covering | Cloth |
| Charging Cables | | WLTP CO2 Emissions | |
| Gearbox Type | Automatic | | |

Vehicle History & Documents

| | | | |
|------------------------|---------|----------------------|----|
| Service Book Available | Missing | Next Service Mileage | km |
| Previous Usage | | Imported | No |
| Manufacturer Warrenty | | | |







Equipment

| | | | |
|-------------------------------|---------------------------|----------------------|-----------------------------------|
| Tinted Glass | Adaptivecruisecontrol | Alloys wheels | Anti-lock braking |
| Bluetooth telephone interface | Diesel particulate filter | Digitaldashboard | Front parking sensors |
| Heated wing mirrors | Remote central locking | Satellite navigation | Distancewarningsystem |
| Electrictailgate | Leather steering wheel | Radio | Rear sunblind |
| USB Socket | Airbag Status | AndroidAuto | AppleCarPlay |
| Cruise control | Digital Radio | Fatiguewarningsystem | Head up Display |
| Remote adjusting wing mirrors | Reversing Camera | Stability control | Electrically folding wing mirrors |
| Laneassist | LED Headlamps | Rear parking sensors | |

Equipment Details

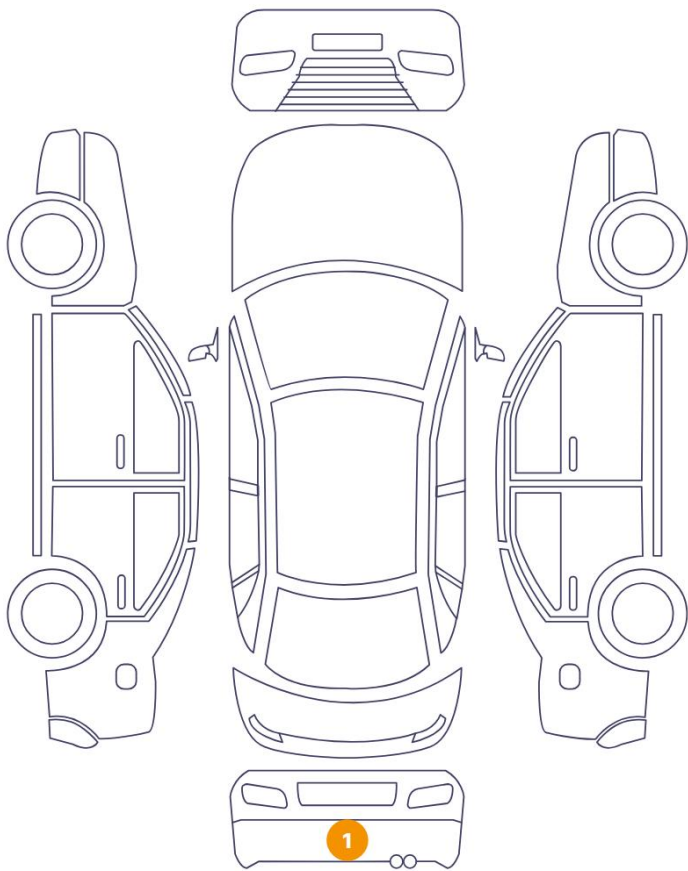
| | | | |
|------------------|---------------------------|------------------|----|
| Air Conditioning | Dual Zone Climate Control | Alloy Wheel Size | 19 |
| Seat Heating | Front | | |

Wheels & Tyres

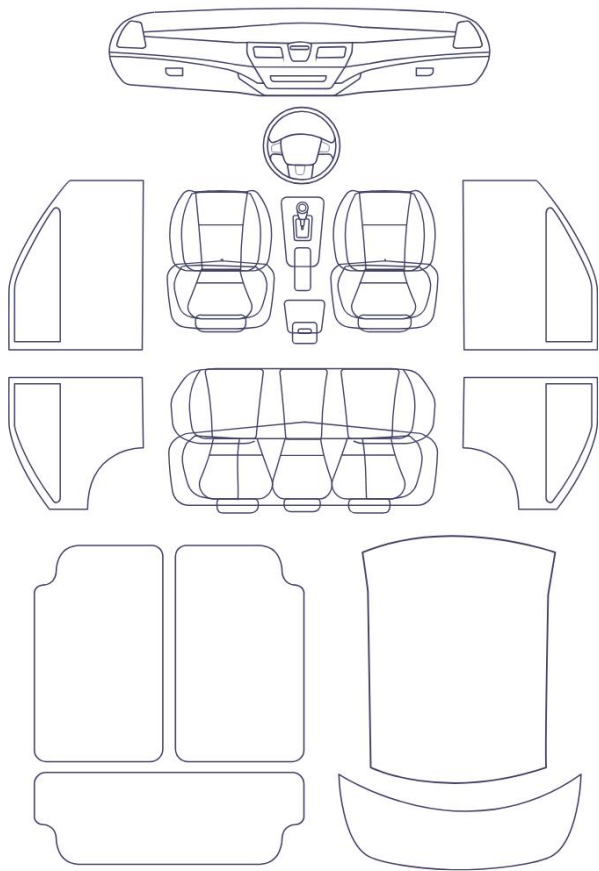
| | | | |
|------------------------|---|-----------------------|---|
| Right Front Tyre Depth | 5 | Left Front Tyre Depth | 5 |
| Right Rear Tyre Depth | 5 | Left Rear Tyre Depth | 5 |

Cosmetic Damage

1 Schäden



0 Schäden



| Component | | Damage | Comments |
|-----------|---------------|-------------------------|----------|
| 1 | Bumper / Back | Paint / Scratch / Scuff | |



1. Bumper / Back
Paint / Scratch / Scuff -

Mechanical Condition

Control Lights

| | | | |
|---------------------------------|---|--|---|
| ABS Warning Light | ✓ | ESP Fault/Traction Control Malfunction Light | ✓ |
| Diesel Particulate Filter Light | ✓ | Airbag Warning Light | ✓ |
| Oil Pressure Warning Light | ✓ | Brake Warning Light | ✓ |
| Power Steering Warning Light | ✓ | Alternator / Battery | ✓ |
| All - wheel Drive | ✓ | No Dashboard Lights | ✓ |
| Display Defect | ✓ | Service Light | ✓ |
| Tire Pressure Monitoring System | ✓ | | |

Engine

| | | | |
|---------------------|---|---------------------|---|
| Engine Status / EML | ✓ | Engine Leak Visible | ✓ |
| Engine Starts | ✓ | | |

Gearbox

| | |
|----------|---|
| Gear Box | ✓ |
|----------|---|

Equipments Test

| | | | |
|---------------------------------------|---|---------------------|---|
| Electric Windows | ✓ | AC / Heating System | ✓ |
| Main & Spare Keys Functioning | ⚠ | Navigation System | ✓ |
| Parking Sensors / Cameras Functioning | ✓ | | |

Levels

| | | | |
|--------------|----|---------------|---|
| Brakes Fluid | NA | Coolant Fluid | ✓ |
|--------------|----|---------------|---|

Test Drive Inspection

Steering Wheel

Steering | Noise / Anomaly

Engine

Engine Noise The Gears Scratch / Skip / Abnormal Operation

Fume Quantity Power Loss

Brake

Brake System Anomaly

General

Test Driven Status

- No troubles detected, good condition or correct tests, according to vehicle age and mileage
- Damages or malfunction detected that requires repairs by the buyer
- Not applicable
- Not tested

Disclaimer

Please also note the "UserGuide condition report", which shows the scope of the vehicle description. [User Guide](#)