



Expertise

Protocol number: 41328986
Order No. / Reference: 25080919
Inspection date: 1 Sept 2025

Manufacturer: Audi
VIN: WAUZZZFY1M2098722

Model: Q5 50 TFSIe quattro S tronic



Vehicle details	
Manufacturer / Type / Model / Equipment	
Audi Q5 50 TFSIe quattro S tronic	
Vehicle Identification number	WAUZZZFY1M2098722
Mileage (Read)	104,274 km
First registration	26 Aug 2021
Number of holders	1
Next periodical technical inspection	05/2026
(Report not on hand)	
Power / Engine displacement	195 kw / 1,984 ccm
Fuel type / Cylinder	Hybr.B/E ext. edition / 4
Gearbox / Number of gears	Automatic / 7
Type of drive	All-wheel drive
Type of vehicle	SUV
Colour / colour code	Brillantschwarz
Doors / Seats	5 / 5
Upholstery type	Cloth
Colour of upholstery	Black-Anthracite



Vehicle details

Maintenance booklet / proof	digital proof / complete	Next maintenance in	9,300 km
Last maintenance on / at	11/2024 at 86,861 km		
Key is / should be	2 / 2	FZG documents	ZB#2 (B) was available (copy), ZB#1 (S) was not available
		Letter No.	GF274659
Previous damage / Accident	None detectable	Repainting	None detectable
Inspection conditions	sufficient	Lifting equipment / pit	yes
Test drive	Not performed	Engine function test	Performed
Manufacturer key number/ type code number	0588 / BYI 00009		
Emission standard	EURO6;WLTP;AP;PI/CI; M, N1 I	Fine dust sticker	
Permitted total weight	2,660 kg	Empty weight	

Tyres

Mounted tyres

#	Tyre size	Type of tyre	Manufacturer	Tread depth
1)	235/60 R18 103W	Summer tyres on Light alloy	Goodyear	5mm / 5mm
2)	235/60 R18 103W	Summer tyres on Light alloy	Goodyear	5mm / 5mm

Additional tyres

#	Tyre size	Type of tyre	Manufacturer	Tread depth
1)	235/60 R18 107V	Winter tyres on Light alloy	Dunlop	6mm / 6mm
2)	235/60 R18 107V	Winter tyres on Light alloy	Dunlop	6mm / 6mm

Replacement

Typ	Tyre size	Type of tyre	Manufacturer	Tread depth
	Tirefit	Expiration date 05/2026		

Legend: Tread depth information for tires on the left is in the first place, for tires on the right is in the second place on the axle in the direction of travel



Equipment

Standard equipment

- | | |
|--|--|
| <ul style="list-style-type: none"> • Airbag for driver and front passenger • Acoustic vehicle warning system • All-wheel drive "quattro" with ultra technology • Traction control (ASR) • Audi drive select • Audi pre sense city • Exterior mirror housings in body color • Fabric headliner • Black roof rails with roof rack detection • tachometer • Rear parking aid • Electromechanical parking brake • Electronic Stabilization Control (ESC) • Chassis: Standard chassis • Radio key (without Safe-Lock) • Luggage compartment lid, electrically opening and closing • Transmission: S tronic 7-speed • Heated rear window • Hybrid drive system PHEV • Interior lighting • Manual parental control • Automatic air conditioning • 3-zone comfort automatic climate control • Front headrests • Charging cable Mode 3 • LED rear lights • Steering wheel: Leather steering wheel in 3-spoke design with multifunction • Model designation according to new performance labeling • Gasoline particulate filter • Wheel: Light alloy wheels, 18" 5-arm turbine • Wheel: Tire repair kit • Radio accessories: Data module Europe • Seat belts • Seats: Standard seats in the front • Seats: Front seats manually adjustable • Parking air conditioning • Phone: Bluetooth interface • Bandage material with warning triangle • Glazing: Clear glass • Electronic immobilizer • Black trim strips | <ul style="list-style-type: none"> • Airbag: Front side airbags and head airbag system • Accent surfaces matt black • Anti-lock braking system (ABS) • Audi connect emergency call & service with Audi connect Remote & Control • Exterior mirrors electrically adjustable and heated • Hill descent assistant • roof edge spoiler • Micrometallic silver decorative inlays • e-tron charging system compact • Door sills with aluminum inserts at the front • Electronic differential lock (EDS) • Driver information system with color display • Electric windows front and rear • Floor mats front and rear • Cruise control including speed limiter • household plug type E/F • Rear window wiper • Industrial plug CEE 16A / 400V / long+straight • Dimmable interior mirror • ISOFIX and Top Tether child seat attachment for the outer rear seats • Headrests (3) rear • Paint finish: Uni • Loading sill protection in plastic • LED headlights • Light/rain sensor • Front center armrest • Non-smoking version • Wheel: On-board tool kit (without jack) • Wheel: Tire pressure monitoring indicator • Radio: MMI Radio plus • Power steering, electromechanical • Seat covers in fabric synonym • Seats: Rear seat bench plus • Sun visor on driver and passenger side • Start-stop system • Separation net • Glazing: Windscreen with thermal insulation and acoustic glazing • Thermal insulation glazing |
|--|--|

Extra equipment



- Audi virtual cockpit (12.3-inch display with Full HD resolution; displays speed, engine speed, map display, Audi connect services, radio and media information, and much more; specific displays for plug-in hybrid models; operation via the multifunction steering wheel; configuration of onboard computer values; display of the navigation map as a 3D terrain model; permanent display of navigation information; break recommendation)
- Child Safety Package (ISOFIX child seat attachment for the front passenger seat with passenger airbag deactivation switch and electric rear child safety lock. The recommended child seats from Audi Genuine Accessories are available from your Audi partner.)
- Convenience key (without Safelock) (provides control for access and engine start authorization without the need to actively operate the vehicle key. With the electronic access and drive-away authorization system, you can open your vehicle's doors and trunk lid via wireless communication between the key and the vehicle, and lock it using the sensors on the door handles. The convenience key must be carried for this. The engine is started and stopped using the engine start/stop button.)
- Elimination of model name and performance/technology lettering
- Gloss package (roof frame and window channel strips in anodized aluminum)
- High Beam Assistant (within the system's limits, it automatically detects the headlights of oncoming traffic, the taillights of other road users, and light sources in built-up areas. Depending on the traffic situation, the high beam is automatically switched on or off. The system thus improves the driver's visibility and increases comfort.)
- Rear view camera (The rear view camera detects the area behind the vehicle within system limits and displays it on the MMI screen using dynamic display elements. It is possible to choose between perpendicular parking and trailer mode in conjunction with a factory-installed trailer hitch. Depending on the selected mode, the calculated lane or a guide line for coupling a trailer is displayed. The rear view camera is discreetly integrated into the handle bar of the trunk lid.)
- Roof rails in aluminum with roof rack detection
- Seats: Front sports seats
- Stop assist (holds the vehicle for an unlimited period of time after stopping on normal road gradients and inclines).
- Storage and luggage compartment package (flexible transport of items and comfort while traveling; consisting of: - storage net on the back of the front seat backrests - cup holder in the rear center armrest - storage compartment on the driver's side - lockable glove compartment in the luggage compartment - luggage compartment net - net in the left-hand recess - tensioning strap on the luggage compartment side (not for SQ5 Sportback))
- Wheel: Light alloy wheels, 18" 5-arm star (8.0 J x 18, tires 235/60 R 18)
- Ambient lighting package (in addition to the standard interior lighting (LED): - Courtesy lighting in the exterior door handles - Entry lights on the underside of the front doors - Footwell lighting in the front - Illuminated interior door handles at the front and rear - Ambient lighting in the front and rear doors - Illuminated storage compartment below the instrument panel - Ambient lighting on the front center console)
- Auxiliary climate control (comfort) (it cools or warms the interior to a desired temperature before starting a journey, providing a very high level of climate comfort as soon as you enter the vehicle. In addition, seat heating and ventilation, as well as glass surface heating, can also be activated before starting a journey if the optional equipment has been selected. The comfort auxiliary climate control, including the desired temperature, can be programmed or activated in the MMI and can also be conveniently switched on via the smartphone app.)
- Business package (Audi phone box - MMI navigation plus (including driver information system with color display) - Audi virtual cockpit - heated front seats - automatically dimming interior mirror - electrically adjustable, heated, and folding exterior mirrors, automatically dimming on both sides including automatic curbside assistance for the passenger mirror - high beam assist - manual sunblind for the rear door windows)
- Comfort center armrest in the front (adjustable in inclination and longitudinally movable or completely foldable)
- Electrically adjustable, heated, and folding exterior mirrors with automatic dimming on both sides (including automatic curb-check function for the passenger exterior mirror with integrated LED indicators, including heated windshield washer nozzles, convex, flat, or aspherical mirror glass. The automatic curb-check function allows the passenger exterior mirror to fold down when reverse gear is engaged, giving the driver a better view of the curb.)
- Front seat heating (for driver and passenger side, individually adjustable in 3 stages via direct selection button on the climate control panel)
- Parking Aid Plus (assists the driver with acoustic signals and a display when parking and maneuvering. The parking aid is activated by engaging reverse gear or via a button on the center console, or automatically when the distance to a detected object is less than 90 cm. Automatic activation can be switched on and off.)
- Radio accessories: Audi sound system (10 speakers including center speaker and subwoofer - 6-channel amplifier - total output of 180 watts)
- Seat covers in fabric Imprint (seat center panel in fabric Imprint black - seat side bolsters, headrest center panel, front center armrest in fabric plain black)



- Steering wheel: 3-spoke leather steering wheel with multifunction plus (with 14 multifunction buttons for convenient operation of the existing infotainment features such as audio skip, telephony, NAV button, or the freely programmable button - adjustable in height and distance - with full-size airbag - shift paddles for manual gear changes)

Brief expert findings

Documents submitted	At the time of the inspection, the registration certificate Part 2 (letter) was available, but the registration certificate Part 1 (certificate) was not. (Copy)
VIN comparison	The vehicle identification number (VIN) was read from the vehicle and its conformity with the submitted documents was verified during the inspection by the undersigned.
Inspection	The inspection conditions were sufficient for the assessment of the vehicle. Lifting equipment and a pit were available for examining the vehicle.
Test drive	No test drive/maneuvering was carried out during the inspection of the vehicle.
Engine function test	An engine test run was performed.

Value reducing factors

No.	Component group	Description
1	Door - rear left side	Door - Scratched - Smart repair
2	Door - rear left side	Door - dent(s) - Smooth repair work
3	Wheel / tyres	Alloy rim - rear left side - Scratched - Smart repair
4	Wheel / tyres	Alloy rim - front right side - Scratched - Smart repair
5	Wing mirror - left side	Cap - Scratched - Replace
6	Rear bumper	Rear bumper - Scratched - Paint
7	Bonnet	Bonnet (Steinschlag) - Scratched - Paint
8	Vehicle glazing	Windscreen - Stone chips - Replace

Wear and tear

No.	Component group	Description
1	Body	Body (oberflächlich) - Scratched - No deduction
2	Front bumper	Front bumper (Kratzer) - Stone chips - No deduction

The vehicle shows signs of wear commensurate with its age and use.

Order/Scope of order

The order was placed to prepare a sales report for the vehicle described. This includes the following:

- Description of core relevant information about the vehicle
- Documentation of equipment features
(Delivery by third-party service providers)
- Documentation of damage, defects, missing parts
- Documentation of previous damage, unrepaired previous damage, repainting
- a brief visual or functional inspection of the equipment details if possible.
(Functional tests of driver assistance systems are not included in the scope of services!)
- a photo documentation of the vehicle



Basis for the order

This product is based on the Alphabet Fuhrpark GmbH guidelines for vehicle returns and valuations. The expert makes the explicit findings in each individual case objectively within the framework of the specified standards based on his or her own expertise.

The vehicle inspection takes place in a disassembled state.

Damage or defects that can only be detected during disassembly/diagnosis work or through advanced knowledge remain within the scope of the prognosis risk. An extended risk exists for concealed defects caused by fraudulent deception and not identifiable by the expert.

Damage or defects resulting from normal use or wear and tear of the vehicle will be accepted according to the applicable standard.

There was no explicit identification or monetary consideration of the expected features within the product.

Features which in their nature and severity slightly exceed normal use but do not constitute unacceptable damage will be documented and identified under signs of use if necessary.

Damage or defects which, according to the underlying standard, can no longer be attributed to normal use or wear and tear are listed in the product under "Depreciating Factors".

Depending on the product specification, a monetary ID can be provided. If this takes place, the costs can be 100% d or pro rata depending on the vehicle's age and mileage.

Previous damages

Apparently, no repaired previous damage could be found on the vehicle.



Figure 1: Diagonal front (left)



Figure 2: Diagonal front (right)



Figure 3: Diagonal rear (left)



Figure 4: Diagonal rear (right)



Figure 5: Interior - front



Figure 6: Interior - rear



Figure 7: Instrument cluster



Figure 8: Instrument panel



Figure 9: interior 360° view ([Online link](#))



Figure 10: Cargo area

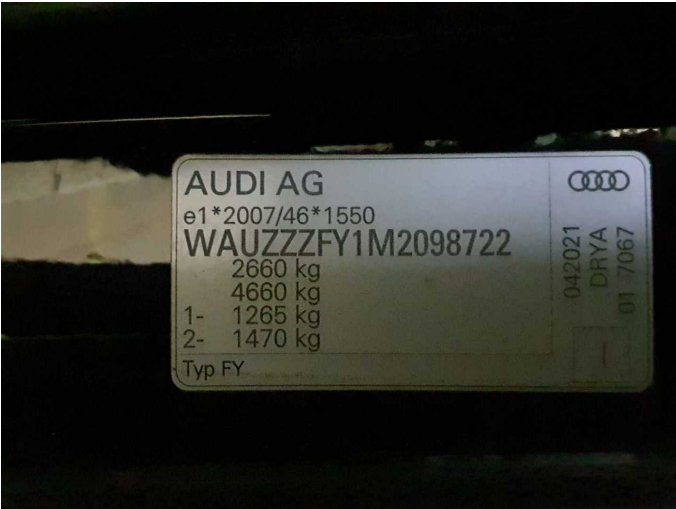


Figure 11: VIN



Figure 12: Mounted tyres

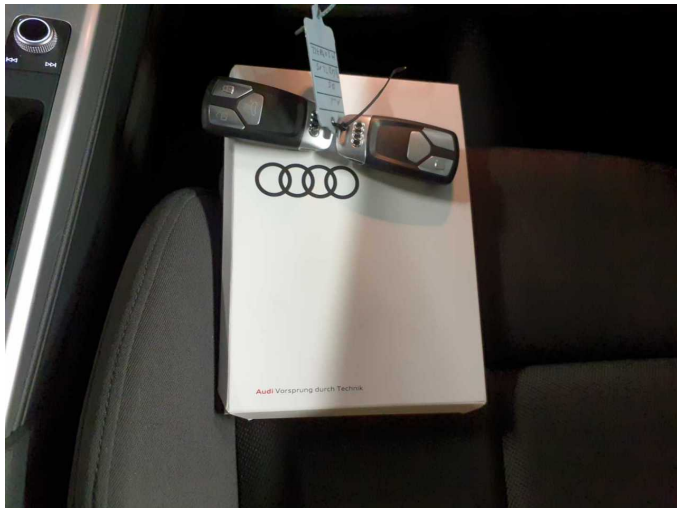


Figure 13: Documents



Figure 14: Additional tyres



Figure 15: Navigation



Figure 16: Misc.



Figure 17: Misc.



Figure 18: Misc.



Figure 19: Misc.



Figure 20: Misc.

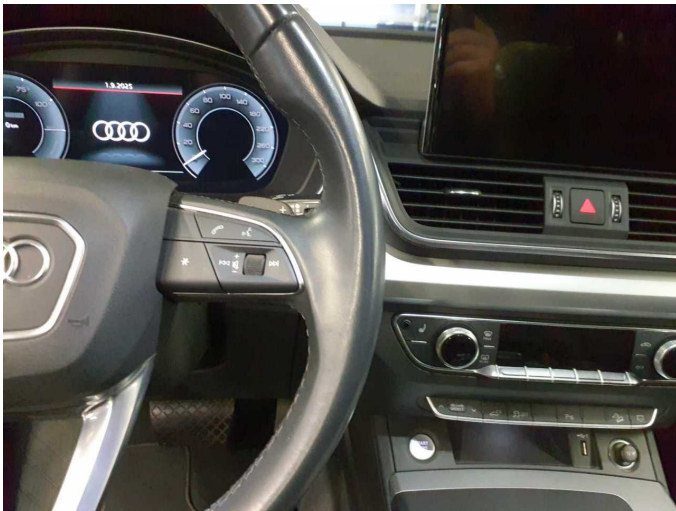


Figure 21: Misc.



Figure 22: Misc.



Figure 23: Misc.



Figure 24: Misc.



Figure 25: Misc.

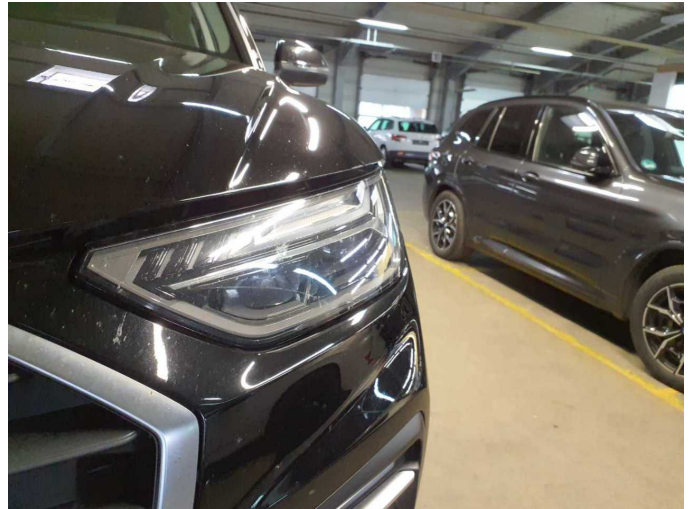


Figure 26: Misc.

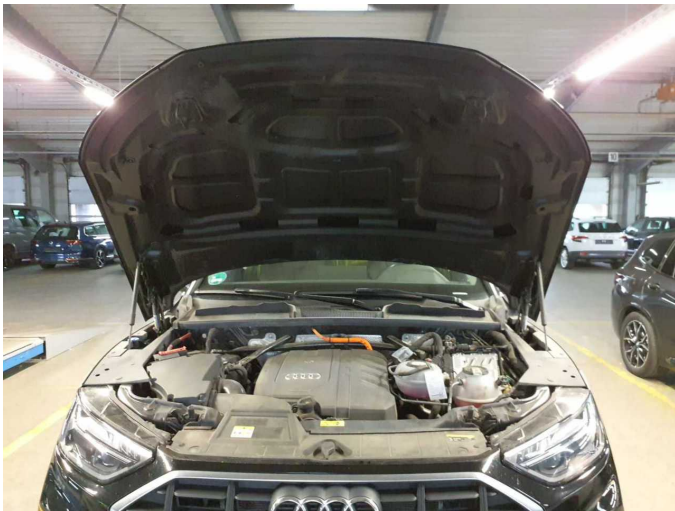


Figure 27: Misc.



Figure 28: Misc.



Figure 29: Misc.



Figure 30: Misc.

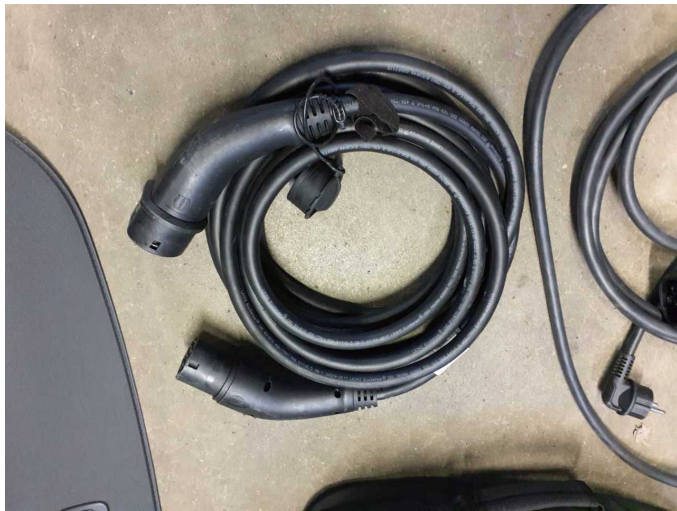


Figure 31: Misc.

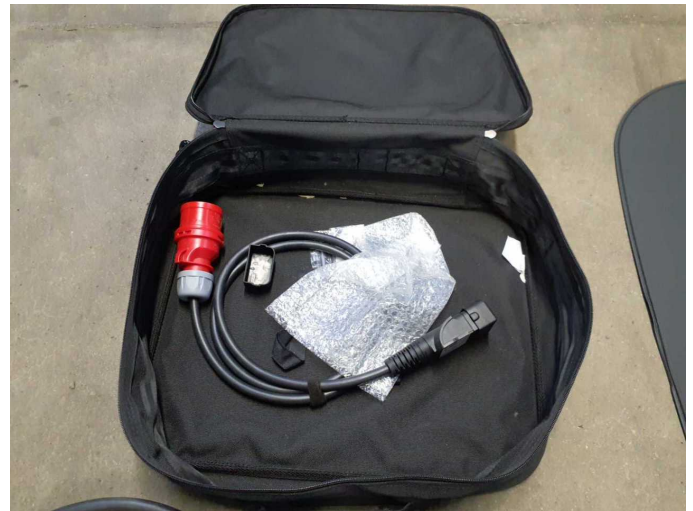


Figure 32: Misc.



Figure 33: Misc.



Figure 34: Misc.

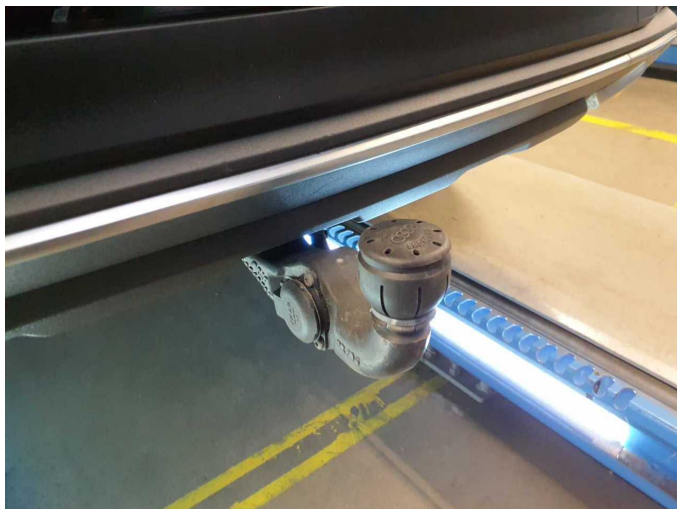


Figure 35: Misc.

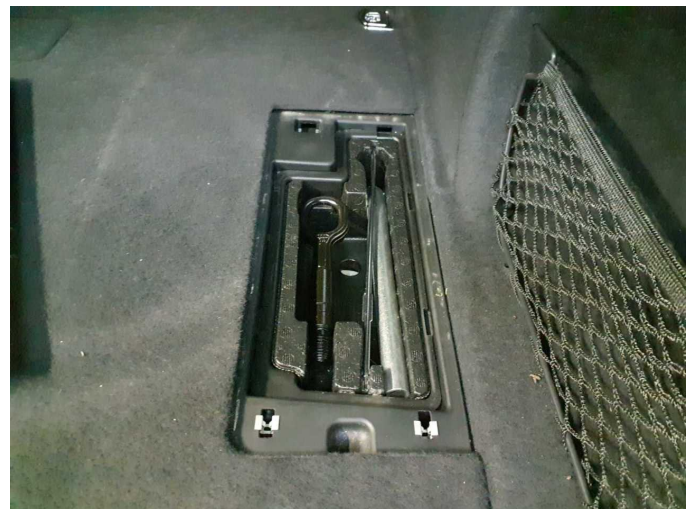


Figure 36: Misc.

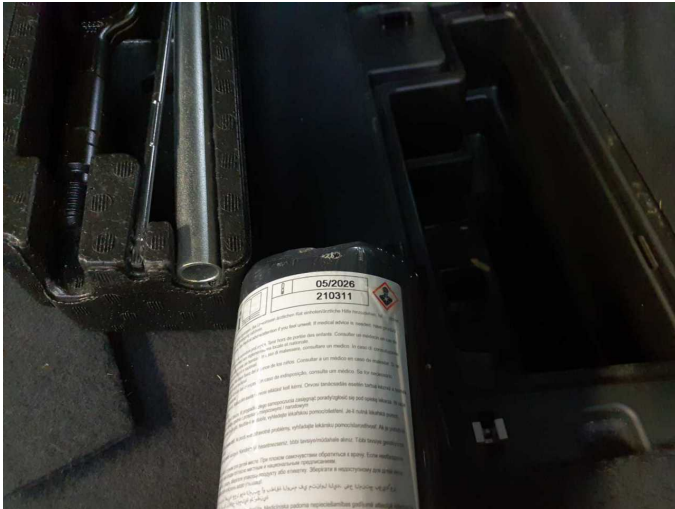
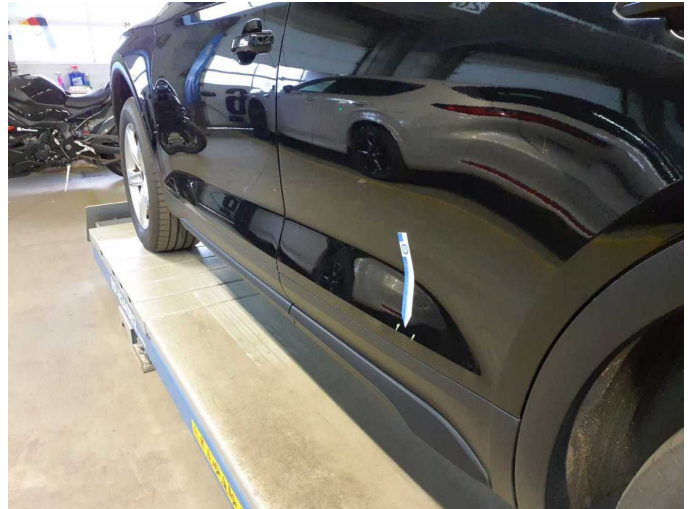
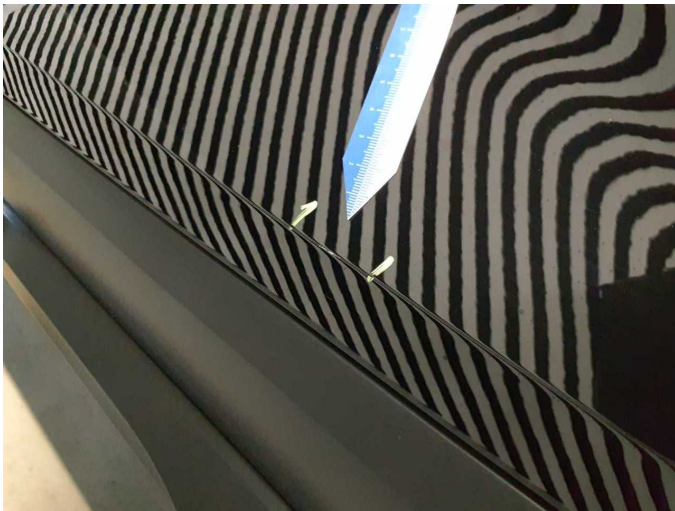


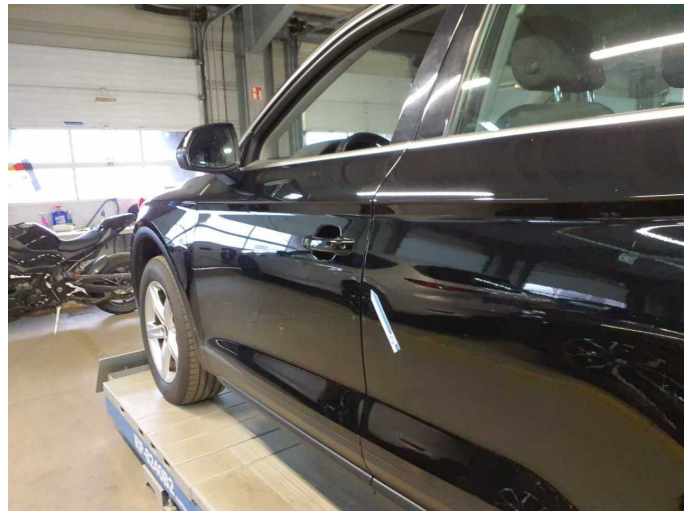
Figure 37: Misc.



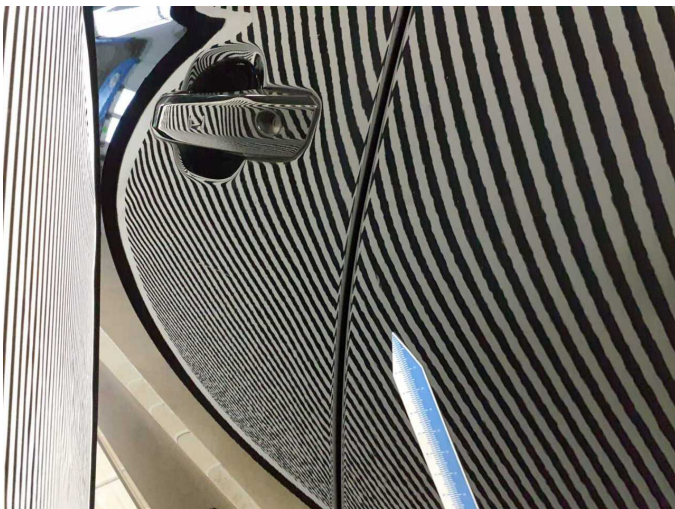
Damage 1: Door - rear left side: Door - Scratched - Smart repair



Damage 1: Door - rear left side: Door - Scratched - Smart repair



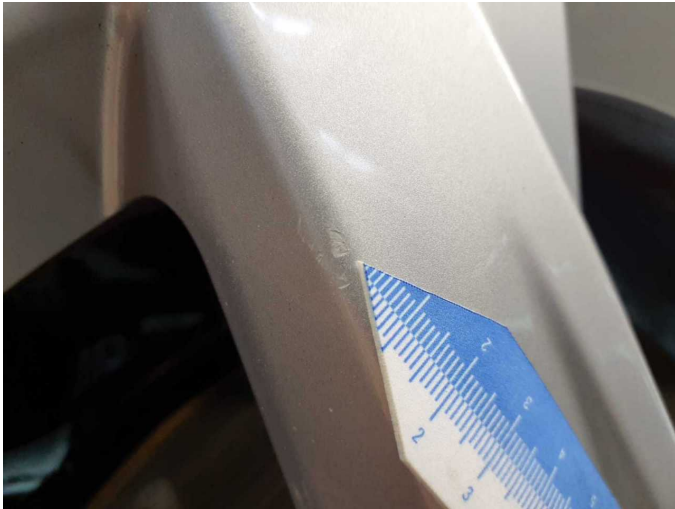
Damage 2: Door - rear left side: Door - dent(s) - Smooth repair work



Damage 2: Door - rear left side: Door - dent(s) - Smooth repair work



Damage 3: Wheel / tyres: Alloy rim - rear left side - Scratched - Smart repair



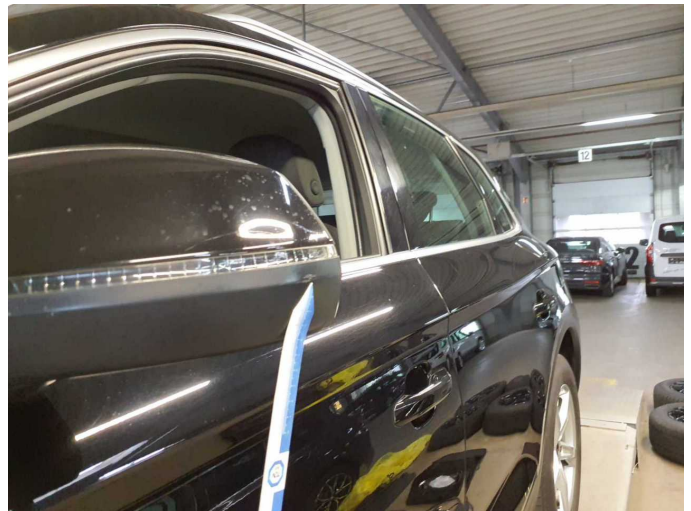
Damage 3: Wheel / tyres: Alloy rim - rear left side - Scratched - Smart repair



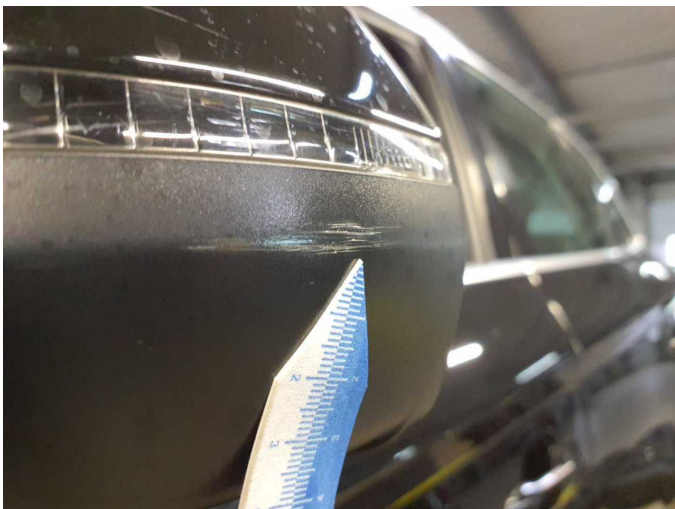
Damage 4: Wheel / tyres: Alloy rim - front right side - Scratched - Smart repair



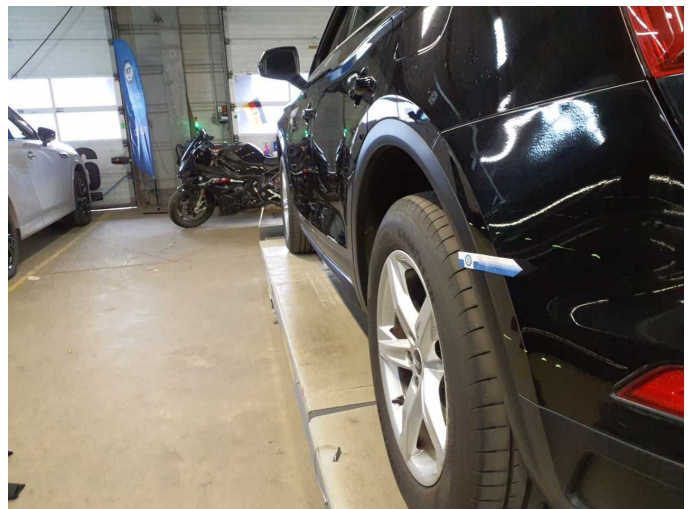
Damage 4: Wheel / tyres: Alloy rim - front right side - Scratched - Smart repair



Damage 5: Wing mirror - left side: Cap - Scratched - Replace



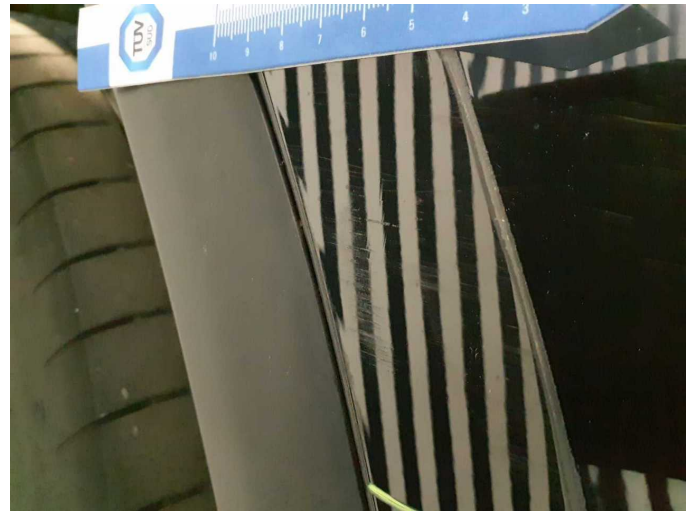
Damage 5: Wing mirror - left side: Cap - Scratched - Replace



Damage 6: Rear bumper: Rear bumper - Scratched - Paint



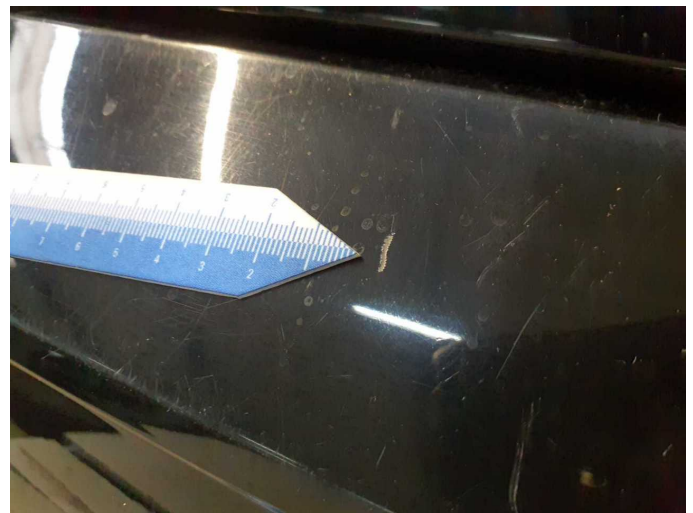
Damage 6: Rear bumper: Rear bumper - Scratched - Paint



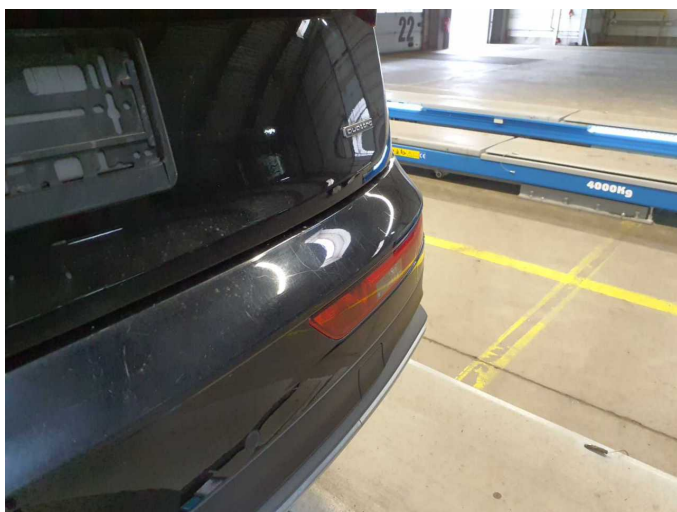
Damage 6: Rear bumper: Rear bumper - Scratched - Paint



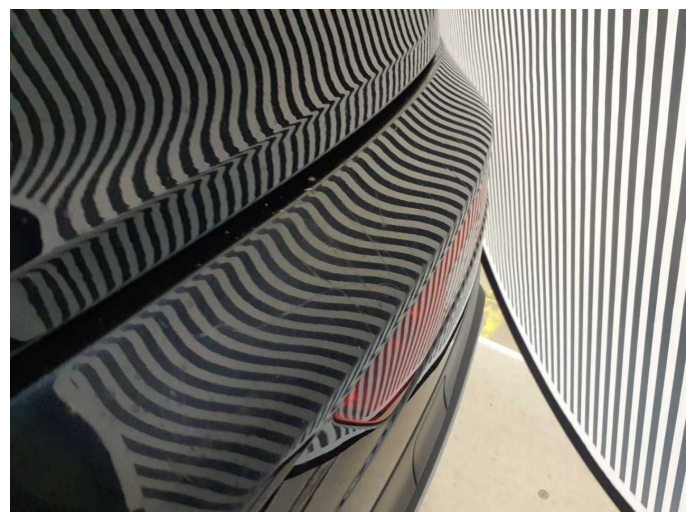
Damage 6: Rear bumper: Rear bumper - Scratched - Paint



Damage 6: Rear bumper: Rear bumper - Scratched - Paint



Damage 6: Rear bumper: Rear bumper - Scratched - Paint



Damage 6: Rear bumper: Rear bumper - Scratched - Paint



Damage 6: Rear bumper: Rear bumper - Scratched - Paint



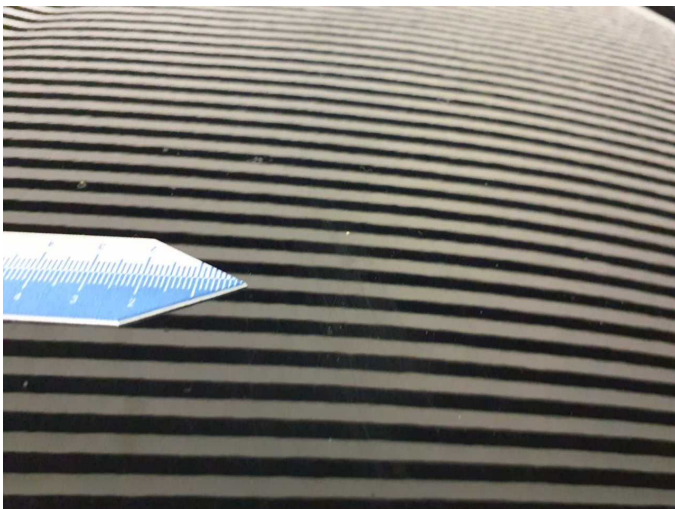
Damage 6: Rear bumper: Rear bumper - Scratched - Paint



Damage 7: Bonnet: Bonnet (Steinschlag) - Scratched - Paint



Damage 7: Bonnet: Bonnet (Steinschlag) - Scratched - Paint



Damage 7: Bonnet: Bonnet (Steinschlag) - Scratched - Paint



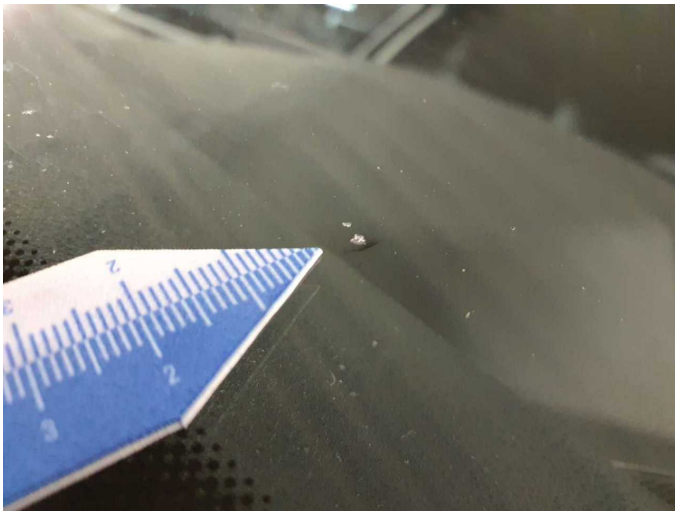
Damage 7: Bonnet: Bonnet (Steinschlag) - Scratched - Paint



Damage 7: Bonnet: Bonnet (Steinschlag) - Scratched - Paint



Damage 8: Vehicle glazing: Windscreen - Stone chips - Replace



Damage 8: Vehicle glazing: Windscreen - Stone chips - Replace



Damage 8: Vehicle glazing: Windscreen - Stone chips - Replace



Damage 8: Vehicle glazing: Windscreen - Stone chips - Replace



Wartungshistorie

(gemäß Auftraggeber Informationen)

Fahrgestellnummer: WAUZZZFY1M2098722
Hersteller / Modell: AUDI AUDI Q5 50 TFSle quattro S tronic

Datum	KM-Stand	Beschreibung
25.11.2024	86.861	Luftfiltereinsatz ern; Motoröl b. Wartung; Ölfilter ern; Regelwartungsdienst; Wartung Sonstiges; Zündkerzen ern
10.09.2024	80.496	AU; Wartung Sonstiges
18.09.2023	60.000	Bremsflüssigkeit; Bremsflüssigkeit ern; Getriebeöl ern/prüfen; Motoröl b. Wartung; Ölfilter ern; Regelwartungsdienst; Wartung Sonstiges
11.11.2022	33.788	Motoröl b. Wartung; Ölfilter ern; Regelwartungsdienst; Wartung Sonstiges