



AUDI Q5

Q5 50 TFSIe quattro S tronic

VIN NO WAUZZZFY0N2097952
Registration Number Y0N2097952



MOT Date	Number of Owners	Number of Keys	Odometer Reading
2027-07-01	1	2	121083 km
Last Service	Last Service Mileage	First Registration Date	Country First Registered
-	-	2022-07-07	Germany

Inspection Report Summary

Customer	BCA Online	Report Number	P20250908073915
Inspection Date / Place	2025-09-08 / BCA Neuss	Cosmetic Grade	3

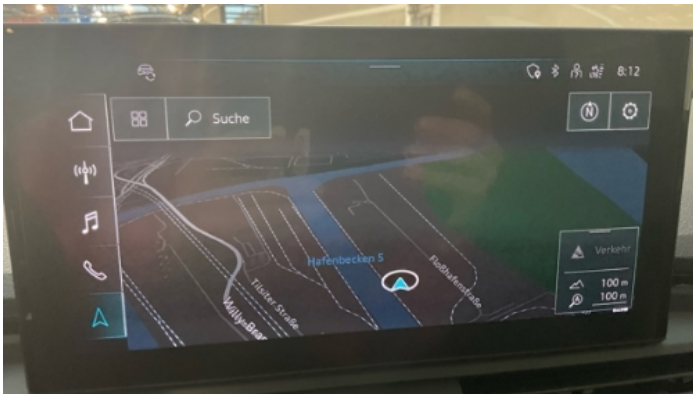
Vehicle Summary

Vehicle Condition	Runner	VAT Type	Qualifying
Fuel Type	Plug - in Hybrid Electric Vehicle Petrol	Road Worthy	Yes
Colour	Grey	Engine Size (cc)	1984
Engine Size	2.0	No of Doors	5
Body Type	SUV	Drive Train	All-Wheel-Drive permanent
Seat Colour		No of Seats	5
Seat Covering Name	Schwarz	Seat Covering	Leather
Charging Cables	OUC + Type 2	NEDC CO2 Rating (q/km)	41
Gearbox Type	Automatic		

Vehicle History & Documents

Service Book Available	Missing	Next Service Mileage	km
Previous Usage		Imported	No
Manufacturer Warrenty			









Equipment

Tinted Glass	USB Socket	Airbag Status	Anti-lock braking
Cruise control	Digitaldashboard	Heated wing mirrors	Remote central locking
Roof rails	Stability control	Electrically folding wing mirrors	Leather steering wheel
Radio	Tow ball	360°camera	Alloys wheels
Bluetooth telephone interface	Digital Radio	Front parking sensors	Remote adjusting wing mirrors
Reversing Camera	Satellite navigation	Sunroof	Electrictailgate
LED Headlamps	Rear parking sensors		

Equipment Details

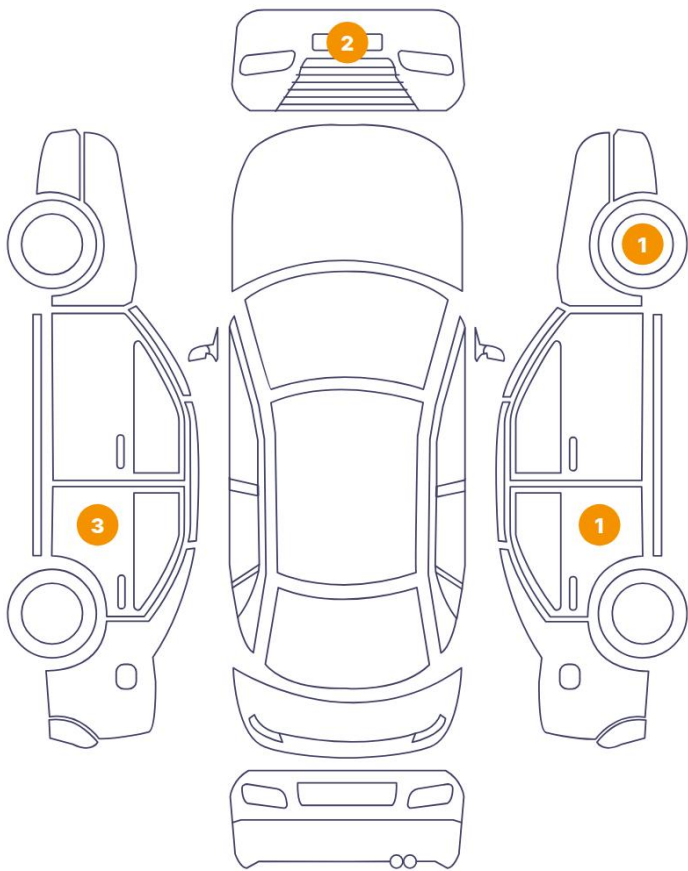
Tow Ball Type	Pivoted	Air Conditioning	Three Zone Climate Control
Alloy Wheel Size	20	Seat Heating	Front
Sunroof Type	Opening Panoramic		

Wheels & Tyres

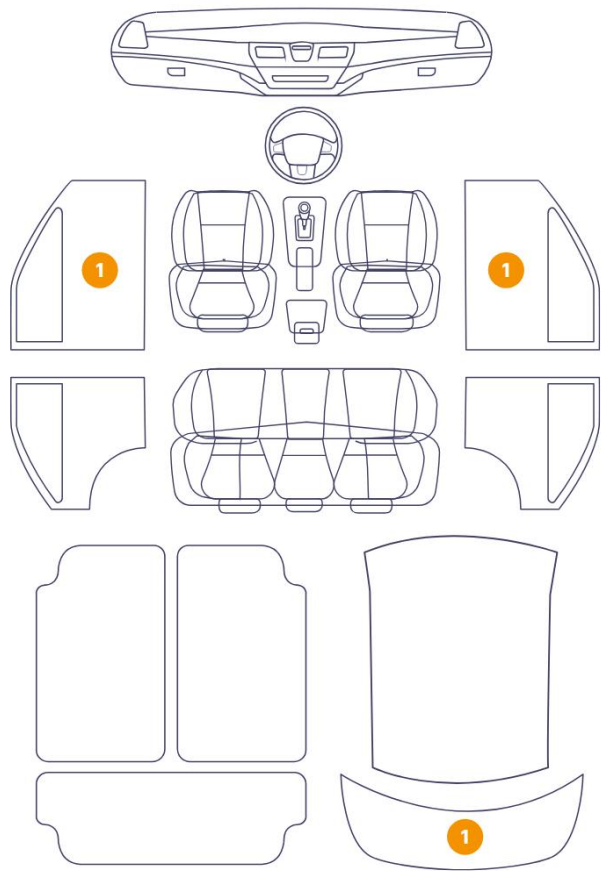
Right Front Tyre Depth	6	Left Front Tyre Depth	6
Right Rear Tyre Depth	6	Left Rear Tyre Depth	6

Cosmetic Damage

7 Schäden



3 Schäden



Component		Damage	Comments
1	Bumper / Front	Paint / Scratch / Scuff	
2	Bumper / Front	Paint / Scratch / Scuff	
3	Panel Filling / Front Left	Interior / Scratched	
4	Door / Back Left	Paint / Scratch / Scuff	
5	Door / Back Left	Paint / Scratch / Scuff	
6	Pillar / Back Left	Paint / Scratch / Scuff	
7	Tailgate Upholstery / Back	Interior / Scratched	
8	Door / Back Right	Paint / Scratch / Scuff	
9	Panel Filling / Front Right	Interior / Scratched	
10	Rim / Front Right	Out of Bodywork / Scratch	



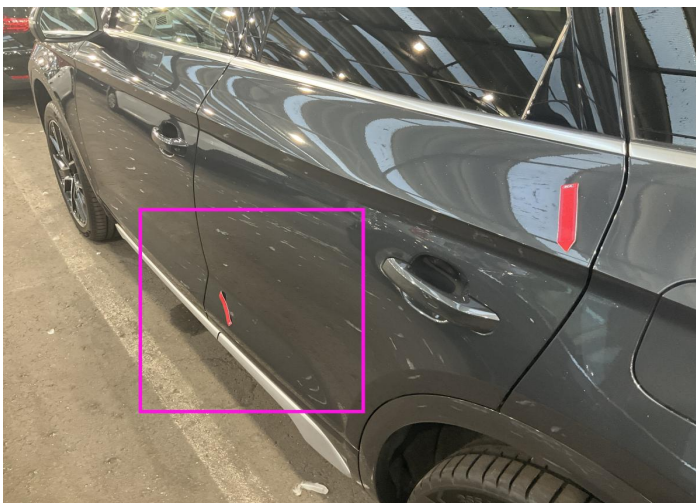
1. Bumper / Front
Paint / Scratch / Scuff -



2. Bumper / Front
Paint / Scratch / Scuff -



3. Panel Filling / Front Left
Interior / Scratched -



4. Door / Back Left
Paint / Scratch / Scuff -



5. Door / Back Left
Paint / Scratch / Scuff -



6. Pillar / Back Left
Paint / Scratch / Scuff -



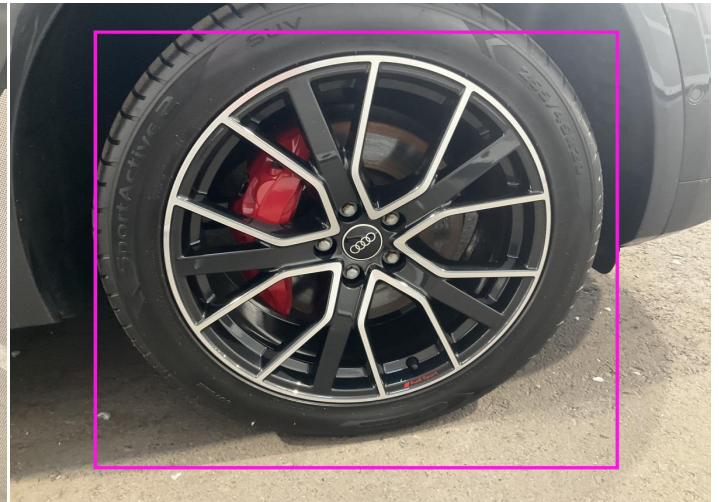
7. Tailgate Upholstery / Back
Interior / Scratched -



8. Door / Back Right
Paint / Scratch / Scuff -



9. Panel Filling / Front Right
Interior / Scratched -



10. Rim / Front Right
Out of Bodywork / Scratch -

Mechanical Condition

Control Lights

Display Defect	✓	Service Light	✓
ABS Warning Light	✓	ESP Fault/Traction Control Malfunction Light	✓
Airbag Warning Light	✓	Oil Pressure Warning Light	✓
Brake Warning Light	✓	Power Steering Warning Light	✓
Alternator / Battery	✓	All - wheel Drive	✓
No Dashboard Lights	✓		

Equipments Test

Central Locking	✓	Main & Spare Keys Functioning	✓
Electric Windows	✓	Navigation System	✓
Audio Equipment	✓	Parking Sensors / Cameras Functioning	✓
AC / Heating System	✓	Other Equipments	✓

Engine

Engine Status / EML	✓	Engine Leak Visible	✓
Engine Starts	✓		

Gearbox

Gear Box	✓
----------	---

Hybrid/EV

Charge Lead Condition	✓	Charge Port Condition	✓
Hybrid System Fault	✓		

Levels

Brakes Fluid	✓	Coolant Fluid	✓
--------------	---	---------------	---

Test Drive Inspection

Steering Wheel			
Steering Noise / Anomaly		✓	
Engine			
Engine Noise	✓	The Gears Scratch / Skip / Abnormal Operation	✓
Fume Quantity	✓	Power Loss	✓
Brake			
Brake System Anomaly		✓	
General			
Test Driven Status		✓	
✓ <i>No troubles detected, good condition or correct tests, according to vehicle age and mileage</i>			
! <i>Damages or malfunction detected that requires repairs by the buyer</i>			
NA <i>Not applicable</i>			
= <i>Not tested</i>			

Disclaimer

Please also note the "UserGuide condition report", which shows the scope of the vehicle description.

[User Guide](#)