



Expertise

Protocol number: 41706277
Order No. / Reference: 25203067
Inspection date: 24 Sept 2025

Manufacturer: Audi	Model: A5 Sportback 40 TDI S tronic S line
VIN: WAUZZZF59NA021156	



Vehicle details	
Manufacturer / Type / Model / Equipment	
Audi A5 Sportback 40 TDI S tronic S line	
Vehicle Identification number	WAUZZZF59NA021156
Mileage (Read)	161,546 km
First registration	11 Feb 2022
Number of holders	1
Power / Engine displacement	150 kw / 1,968 ccm
Fuel type / Cylinder	Hybrid Diesel / E / 4
Gearbox / Number of gears	Automatic / 7
Type of drive	Front drive
Type of vehicle	Coupe
Colour / colour code	Quantumgrau (X7B)
Doors / Seats	5 / 5
Upholstery type	Cloth
Colour of upholstery	Black-Anthracite
Vehicle with smoke odor	no



Vehicle details			
Maintenance booklet / proof	digital proof / complete	Next maintenance in	6,500 km
Last maintenance on / at	03/2025 at 138,500 km		
Key is / should be	2 / 2	FZG documents	ZB#2 (B) was available (copy), ZB#1 (S) was not available
		Letter No.	GF532785
Previous damage / Accident	Detectable	Repainting	Detectable
Inspection conditions	sufficient	Lifting equipment / pit	yes
Test drive	short drive on the company premises	Engine function test	Performed
Manufacturer key number/ type code number	0588 / BWN 00229		
Emission standard	EURO6;WLTP;AP;PI/CI; M, N1 I	Fine dust sticker	
Permitted total weight	2,125 kg	Empty weight	

Tyres				
Mounted tyres				
#	Tyre size	Type of tyre	Manufacturer	Tread depth
1)	245/40 R18 93H	Summer tyres on Light alloy	Michelin	4mm / 4mm
2)	245/40 R18 93H	Summer tyres on Light alloy	Michelin	6mm / 6mm
Additional tyres				
#	Tyre size	Type of tyre	Manufacturer	Tread depth
1)	225/50 R17 98H	Winter tyres on Light alloy	Dunlop	2mm / 2mm
2)	225/50 R17 98H	Winter tyres on Light alloy	Dunlop	3mm / 3mm
Replacement				
Typ	Tyre size	Type of tyre	Manufacturer	Tread depth
	Tirefit	Expiration date 11/2025		
Legend: Tread depth information for tires on the left is in the first place, for tires on the right is in the second place on the axle in the direction of travel				

Equipment

Standard equipment

- AdBlue tank (12 liters)
- Airbag: Front side airbags and head airbag system (front side airbags integrated into the seat backrests; with additional head airbag system; deploys in front of the side window area and thus helps to protect front and outer rear passengers in the event of a side impact)
- Traction control
- Audi drive select (adjusts the vehicle characteristics in the available modes auto, comfort, dynamic, and individual by adjusting the steering assistance, accelerator pedal and gearshift characteristics, and other optional equipment. The individual mode allows the combination of different settings for the respective systems.)
- Audi pre sense city (An impending collision with vehicles and pedestrians can be detected within system limits at speeds up to approximately 85 km/h. In this case, the system warns the driver visually, acoustically, and, if necessary, with a sudden braking action. If necessary, it can initiate full deceleration to reduce the collision speed or, under certain circumstances, avoid the collision.)
- Decorative inlays diamond lacquer silver grey (for dashboard, door panels and center console)
- tachometer
- Rear parking aid (supports reverse parking by acoustically indicating the distance to a detected object behind the vehicle. Measurement by ultrasonic sensors discreetly integrated into the bumper, active when reverse gear is engaged)
- Electronic Stability Control (ESC) (networks ABS, EBV, ASR, and EDL with its own sensors and compares driving data with reference data; ensures greater stability at any speed by selectively braking individual wheels and intervening in engine management)
- Chassis (sports chassis) (with tighter suspension and damping for more direct road contact and sporty handling)
- Electric front windows (with touch-open/close function (including excess force limiter) and comfort control)
- Remote key, without Safe-Lock (unlocks and locks doors, luggage compartment and fuel tank flap - including Keyless Go - including convenient closing/opening of windows)
- Luggage compartment lid, electrically opening and closing (opening via the button on the vehicle key, the button in the driver's door trim, the soft-touch button in the handle recess of the lid, or a foot gesture (kick motion) in conjunction with the convenience key including sensor-controlled luggage compartment release - closing via the button on the inside of the lid, the button in the driver's door, the convenience key (continuous pressure), or a foot gesture (kick motion) in conjunction with the convenience key including sensor-controlled luggage compartment release)
- Dimmable interior mirror
- Airbag for driver and front passenger (full-size airbag, with passenger airbag deactivation)
- Matt black accent surfaces (for dashboard, door sill trim and center console insert)
- Anti-lock braking system (ABS) (with electronic brake force distribution (EBD) and brake assist)
- Audi connect Emergency Call & Service including vehicle control (Emergency Call & Service: - Emergency call - Online breakdown call - Audi damage service - Audi service appointment online Vehicle control: - Vehicle status report - Remote locking/unlocking - Parking position - Remote control auxiliary heating - Anti-theft alarm notification)
- Electrically adjustable/heated exterior mirrors (with integrated LED indicators, convex, flat or aspherical mirror glass, including heated windscreen washer nozzles)
- Exterior mirror housings in body color
- Outside temperature display
- Brake light, third
- Fabric headliner (atlas beige or titanium grey, colour-coordinated with the respective interior colour)
- Diesel particulate filter (DPF) with DeNox catalyst and AdBlue tank
- Door sills with aluminum inserts at the front, illuminated, with S lettering
- Electromechanical parking brake (includes parking brake function when stationary - starting aid through automatic release when starting off and emergency braking function while driving on all four wheels)
- Driver information system (with high-resolution 5-inch monochrome display, display contents: speed (digital speedometer), time, mileage, outside temperature, fuel warning with remaining range, gear shift recommendation, current radio station or music track, radio and media lists, phone menu, navigation information (if available). The integrated efficiency program supports the driver with consumption data overviews and tips for more economical driving; including break recommendation.)
- Floor mats front and rear (made of black velour; in conjunction with interior design selection, interior S line or in the S model with contrasting stitching color-coordinated to the respective interior trim color)
- Cruise control with adjustable speed limiter (The cruise control maintains the individually set speed from 20 km/h, provided the engine power permits. The adjustable speed limiter helps to avoid exceeding a preset maximum speed from approximately 30 km/h, e.g., within built-up areas)
- Transmission: S tronic (7-speed)



- ISOFIX and Top Tether child seat anchorage for the outer rear seats (standard bracket for the practical attachment of ISOFIX child seats - including additional attachment point (Top Tether) - the recommended child seats are available from your Audi partner)
- trunk floor mat
- Headrests (4) (height adjustable front and rear)
- LED rear lights (indicator, brake, tail, reversing, and rear license plate lights in LED technology. LED brake lights enable earlier detection by following traffic due to their faster activation.)
- Steering wheel: Leather steering wheel in 3-spoke design with multifunction (with 6 multifunction buttons for operating the basic functions of the existing infotainment system; adjustable in height and reach, with full-size airbag; leather steering wheel rim)
- Front center armrest
- Non-smoking version (one 12-volt socket in the center console in front of the gearshift lever and one in the rear for the 2nd row of seats - no cigarette lighter)
- Upholstery: Index fabric (for standard seats: - seat center panels in Index fabric, rock grey or black - seat side bolsters, headrests and center armrest in plain rock grey or black fabric)
- Wheel: Tire repair kit (12 V compressor and tire sealant, maximum speed 80 km/h)
- Radio: MMI Radio Plus (10.1" color display (1,540 × 720) including MMI touch operation - Driver information system with 5" mono display - Audi music interface with 1 USB-A and 1 USB-C port, each with data and charging functions - Bluetooth interface (hands-free calling and audio streaming) - 8 passive speakers - AM/FM phase diversity - speed-dependent volume adjustment - Voice dialogue system with natural language for controlling infotainment and vehicle functions - Wi-Fi hardware - DAB+ digital radio)
- Seats (standard seats) in the front (with manual adjustment of seat height, seat length, backrest angle, headrest and belt height)
- Phone: Bluetooth interface (The smartphone can be connected to the vehicle via Bluetooth to play music or make phone calls. Two mobile phones can be connected simultaneously for hands-free calling. Complete contact information is only displayed on the first main phone—stored in the MMI. Depending on the smartphone model, emails and text messages can also be displayed in the MMI via Bluetooth.)
- Electronic immobilizer (integrated in engine control unit, activated by vehicle key)
- Interior lighting (roof module front and rear including reading lights in front with capacitive operation, illuminated vanity mirror, top light on center console, glove compartment light)
- Manual parental control
- Automatic climate control (1-zone - electronically regulates air temperature, air flow, and distribution, sun position-dependent control - air distribution can be adjusted using 5 main settings - 3 LEDs integrated into the seat heating or seat ventilation button provide feedback on the selected setting (optional) - buttons for defrosting the front and rear windows - manual air recirculation control - with key recognition and humidity sensor - dust and odor-separating interior filter)
- LED headlights (LED technology; low beam, high beam, daytime running light and position light in LED; indicator light in bulb technology, with all-weather light)
- Mild hybrid (Mild hybrid features an enhanced start-stop function, enhanced energy recovery during braking (recuperation) to charge the starter battery, and additional lithium-ion storage. This allows the system to recover more energy and shuts off the engine more frequently. A supplementary belt starter generator (BGA) is provided for mild hybrid. Purely electric driving is not possible.)
- Gloss package (roof frame and window channel strips in anodized aluminum)
- Wheel: Tire pressure monitoring indicator (visual and acoustic warning in case of pressure loss on one or more wheels)
- Wheel: Rolling resistance-optimized tires, speed-limited (size 245/40 R18, maximum permissible speed 210 km/h)
- Radio accessories: 8 speakers
- Radio accessories: Data module Europe
- Folding rear seat backrest (40:20:40 split or fully foldable, with center armrest)
- Electromechanical power steering (maintenance-free rack-and-pinion steering with speed-sensitive steering assistance; precise steering feel at high speeds, excellent parking assistance.)
- Seat belts Three-point automatic belts for all seats (belt wear detection in front, color-coordinated with the interior, belt force limiter in front, belt tensioner in front)
- Start-Stop System (helps reduce fuel consumption and CO2 emissions by shutting off the engine when stationary, e.g., at traffic lights. For a restart, the starting process is initiated as soon as the foot brake is released. Can be deactivated at any time using a button.)
- First aid kit with warning triangle (warning triangle - first aid kit - 2 safety vests)
- Glazing: Windscreen with thermal and acoustic glazing (windscreen with thermal glazing, green tinted - improved exterior noise insulation)
- Green heat-insulating glazing (green tinted - for rear window, door and side windows - rear window heated, with timer)



Extra equipment

- AdBlue tank (24 liters)
- Audi virtual cockpit with 12.3" color display (Innovative, fully digital instrument cluster for flexible and needs-based display of information according to the driver's needs: speed/rpm, map display, Audi connect services, radio/media information, etc.; the VIEW button on the multifunction steering wheel allows switching between two different sized displays of the round instruments. The display with small instruments enables large, clear graphics of the onboard computer and MMI content.)
- Fuel tank (54 liters)
- Paintwork: Solid special paintwork
- Steering wheel: Leather steering wheel in 3-spoke design with multifunction plus
- Parking assistance package (parking aid plus - hold assist - rear view camera)
- Business package (heated front seats - comfort mirror package - infotainment package smartphone - navigation package - leather steering wheel in 3-spoke design with multifunction plus)
- Package: Black plus styling package (black styling package with Audi rings at the front and rear and model lettering at the rear in black. On the S model, the model name in the radiator grille is also black/red)
- Radio accessories: Audi sound system (10 speakers including center speaker and subwoofer - 6-channel amplifier - total output of 180 watts)
- Glazing: Privacy glazing (tinted windows) (rear window, rear door and side windows tinted)
- Audi active lane assist
- Black fabric headliner
- Elimination of model name and performance/technology lettering
- High beam assistant
- Camera-based traffic sign recognition
- 3-zone comfort automatic climate control (in addition to the automatic climate control: - climate control panel with large TFT display and capacitive rocker switches - electronically regulates the air temperature and distribution individually for the driver and front passenger - additional climate control panel for adjusting the rear compartment temperature in the rear center console - automatic air recirculation control via air quality sensor, with dust and odor-separating allergen filter - ventilated glove compartment - dust and odor-separating interior filter - residual heat utilization)
- Seat Comfort Package (variable headrests for the front seats - 4-way lumbar support for the front seats, electrically adjustable horizontally and vertically - comfort center armrest in the front, longitudinally adjustable and tilt adjustable; additional storage space in the integrated storage compartment)
- Wheel: Light alloy wheels, 15-spoke design (7.5 J x 17 with winter tires 225/50 R 17 - snow chain compatible, maximum permissible speed 210 km/h)
- Telephone: Smartphone interface with USB rear in V. with navigation package (Audi Smartphone Interface - Bluetooth interface)

Brief expert findings

Documents submitted	At the time of the inspection, the registration certificate Part 2 (letter) was available, but the registration certificate Part 1 (certificate) was not. (Copy)
VIN comparison	The vehicle identification number (VIN) was read from the vehicle and its conformity with the submitted documents was verified during the inspection by the undersigned.
Inspection	The inspection conditions were sufficient for the assessment of the vehicle. Lifting equipment and a pit were available for examining the vehicle.
Test drive	A short movement and shunting trip was carried out on the company premises.
Engine function test	An engine test run was performed.

Value reducing factors

No.	Component group	Description
1	Door - front right side	Door (Klebereste) - Soiled - Clean
2	Rear of vehicle	Boot floor - Soiled - Clean
3	Side panel - rear left side	Side panel - dent(s) - Smooth repair work
4	Side panel - rear left side	Sill - Scratch(es) - Smart repair
5	Door - front left side	Door edge - Scratch(es) - Smart repair
6	Rear bumper	Rear bumper - Scratch(es) - Smart repair
7	Engine	Engine (Öldeckel draufgelgt nicht fest/ Folgekosten möglich) - Leaking - Clean



No.	Component group	Description
8	Front bumper	Cover bumper - front - Scratch(es) - Replace
9	Wheel / tyres	Alloy rim - front left side - Scratch(es) - Loss in value
10	Wheel / tyres	Alloy rim - front right side - Scratch(es) - Loss in value
11	Wheel / tyres	Alloy rim - rear right side - Scratch(es) - Paint
12	2nd wheel set	2nd wheel set (Unter 4mm) - Does not meet the leasing specifications - Replace
13	Bonnet	Bonnet - Stone chips - Paint
14	Vehicle glazing	Windscreen - Stone chips - Replace

Wear and tear

No.	Component group	Description
1	Front bumper	Front bumper - Stone chips - No deduction
2	Rear bumper	Spoiler - Scratch(es) - No deduction
3	Wheel / tyres	Alloy rim - rear left side - Scratch(es) - No deduction

The vehicle shows signs of wear commensurate with its age and use.

Previous damages

No.	Previous damage	Extent of damage (Net)
1	Side - left, Provided by user / customer, from 28 Dec 2022	3.581,84 €
2	Front, Provided by user / customer, from 7 May 2024	5.286,86 €

Repainting

No.	Repainting
1	Bonnet, Professionally carried out, Invoice of repair done Non-existent
2	Side panel - rear left side, Professionally carried out, Invoice of repair done Non-existent
3	Door - rear left side, Professionally carried out, Invoice of repair done Non-existent
4	Door - front left side, Professionally carried out, Invoice of repair done Non-existent

Paint coat thickness measurement

Bonnet	205 µm	Side panel - rear left side	177 µm
Door - rear left side	197 µm	Door - front left side	187 µm

Order/Scope of order

The order was placed to prepare a sales report for the vehicle described. This includes the following:

- Description of core relevant information about the vehicle
- Documentation of equipment features
(Delivery by third-party service providers)
- Documentation of damage, defects, missing parts
- Documentation of previous damage, unrepaired previous damage, repainting
- a brief visual or functional inspection of the equipment details if possible.
(Functional tests of driver assistance systems are not included in the scope of services!)
- a photo documentation of the vehicle



Basis for the order

This product is based on the Alphabet Fuhrpark GmbH guidelines for vehicle returns and valuations. The expert makes the explicit findings in each individual case objectively within the framework of the specified standards based on his or her own expertise.

The vehicle inspection takes place in a disassembled state.

Damage or defects that can only be detected during disassembly/diagnosis work or through advanced knowledge remain within the scope of the prognosis risk. An extended risk exists for concealed defects caused by fraudulent deception and not identifiable by the expert.

Damage or defects resulting from normal use or wear and tear of the vehicle will be accepted according to the applicable standard.

There was no explicit identification or monetary consideration of the expected features within the product.

Features which in their nature and severity slightly exceed normal use but do not constitute unacceptable damage will be documented and identified under signs of use if necessary.

Damage or defects which, according to the underlying standard, can no longer be attributed to normal use or wear and tear are listed in the product under "Depreciating Factors".

Depending on the product specification, a monetary ID can be provided. If this takes place, the costs can be 100% d or pro rata depending on the vehicle's age and mileage.

Previous damages

According to available information previous damages were repaired at the vehicle. Traces of repairs, which allow conclusions about the area of repair, were not recognizable during the inspection.



Figure 1: Diagonal front (left)



Figure 2: Diagonal front (right)



Figure 3: Diagonal rear (left)



Figure 4: Diagonal rear (right)



Figure 5: Interior - front



Figure 6: Interior - rear



Figure 7: Instrument cluster



Figure 8: Instrument panel



Figure 9: Interior 360° view



Figure 10: Cargo area

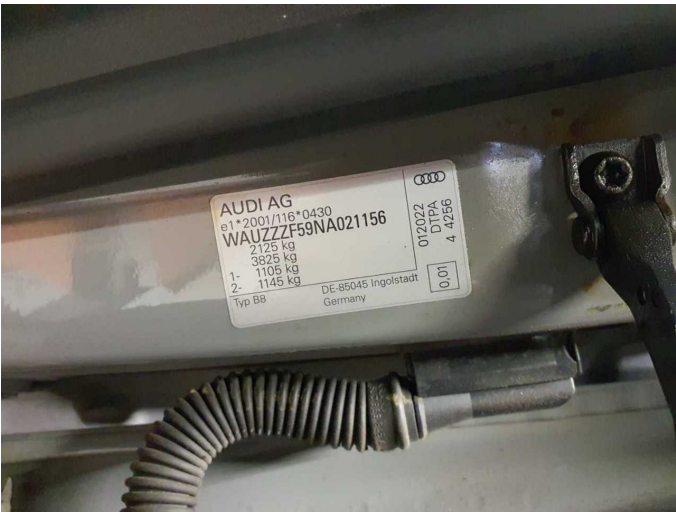


Figure 11: VIN



Figure 12: Mounted tyres



Figure 13: Documents



Figure 14: Documents

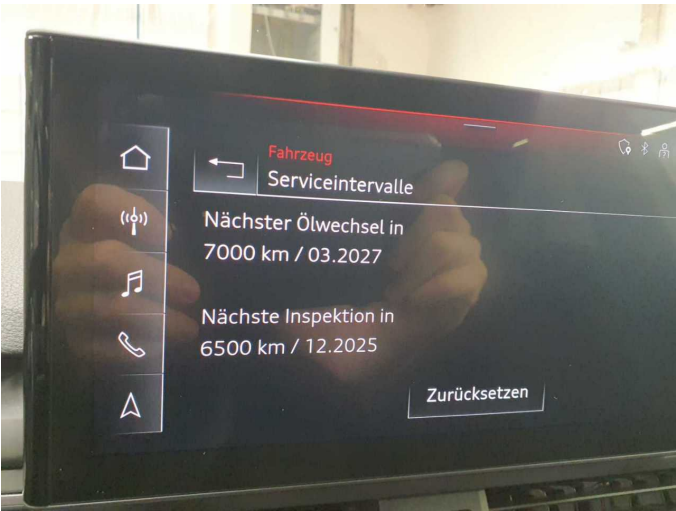


Figure 15: Documents



Figure 16: Additional tyres

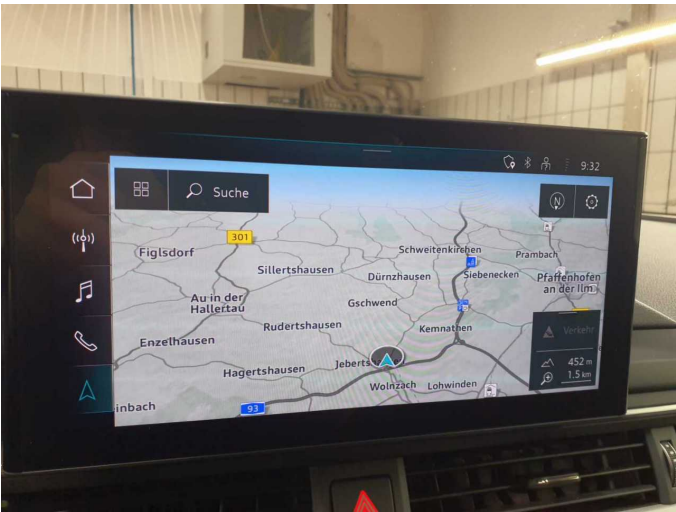


Figure 17: Navigation



Figure 18: Misc.



Figure 19: Misc.



Figure 20: Misc.



Figure 21: Misc.



Figure 22: Misc.

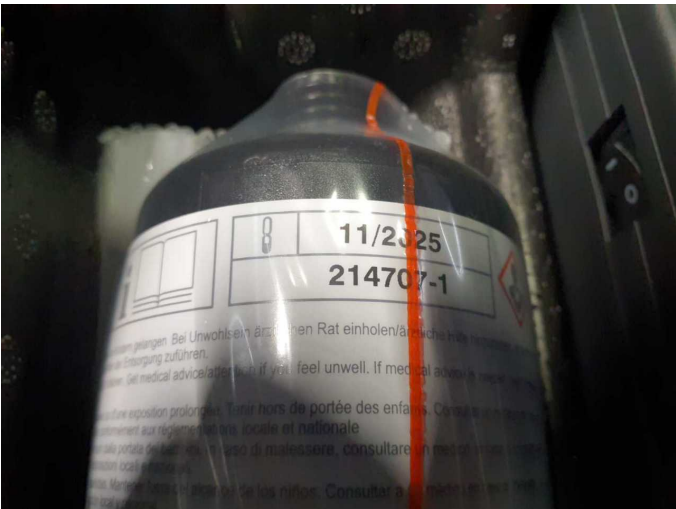


Figure 23: Misc.



Figure 24: Misc.



Figure 25: Misc.



Figure 26: Misc.

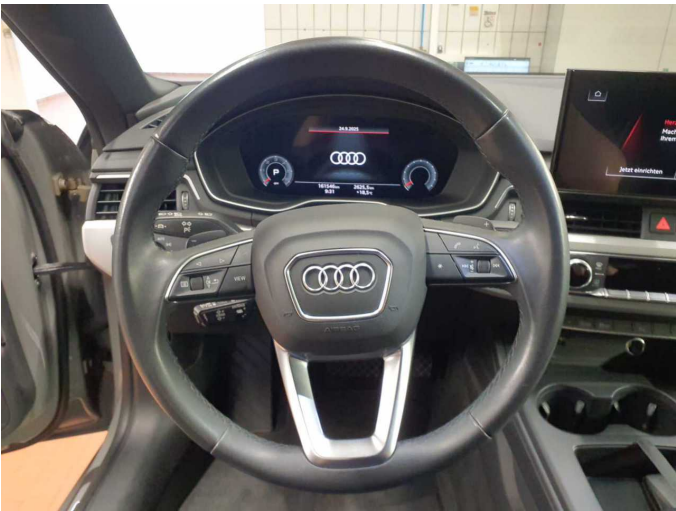


Figure 27: Misc.

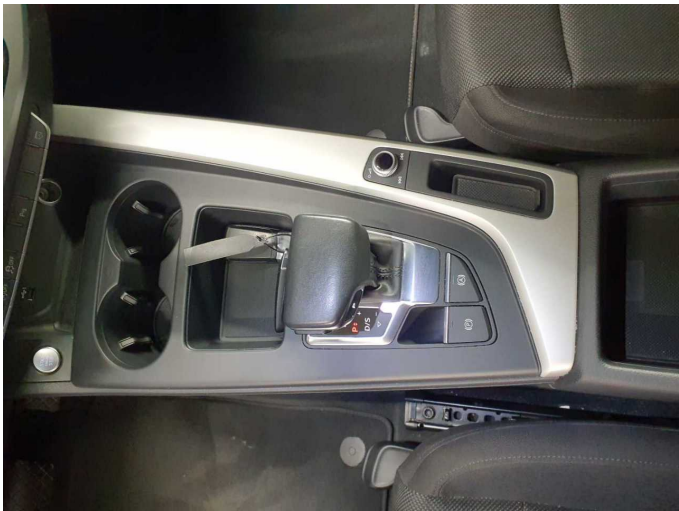


Figure 28: Misc.

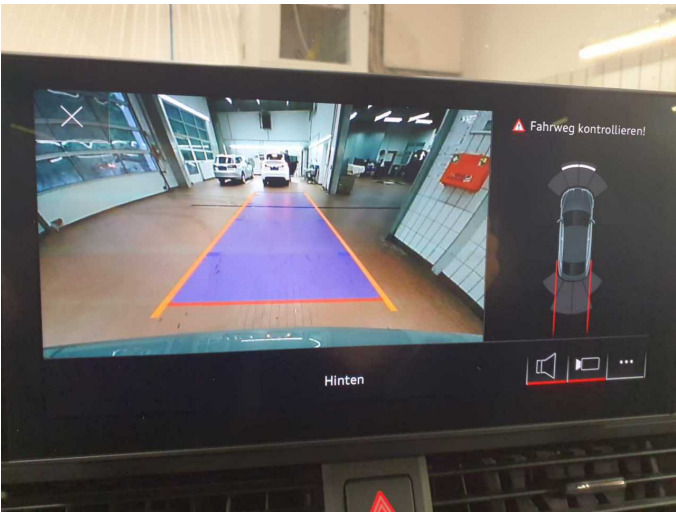


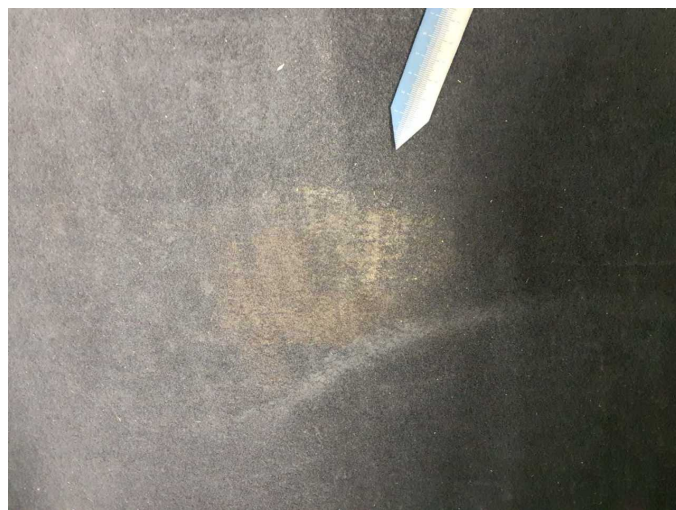
Figure 29: Misc.



Damage 1: Door - front right side: Door (Klebereste) - Soiled - Clean



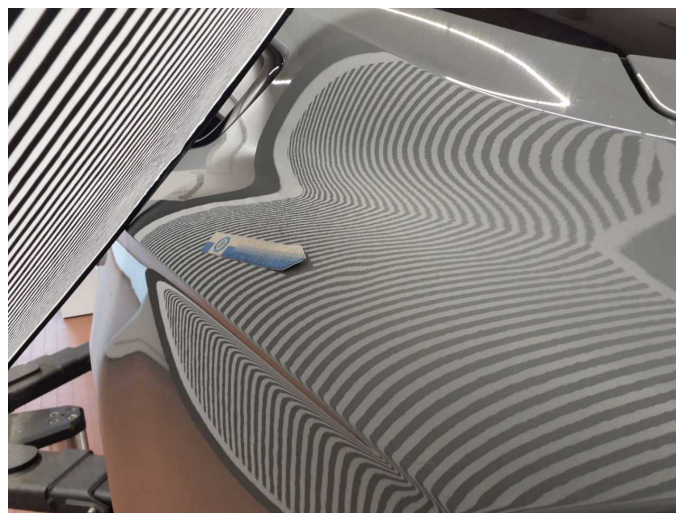
Damage 1: Door - front right side: Door (Klebereste) - Soiled - Clean



Damage 2: Rear of vehicle: Boot floor - Soiled - Clean



Damage 2: Rear of vehicle: Boot floor - Soiled - Clean



Damage 3: Side panel - rear left side: Side panel - dent(s) - Smooth repair work



Damage 3: Side panel - rear left side: Side panel - dent(s) - Smooth repair work



Damage 4: Side panel - rear left side: Sill - Scratch(es) - Smart repair



Damage 4: Side panel - rear left side: Sill - Scratch(es) - Smart repair



Damage 5: Door - front left side: Door edge - Scratch(es) - Smart repair



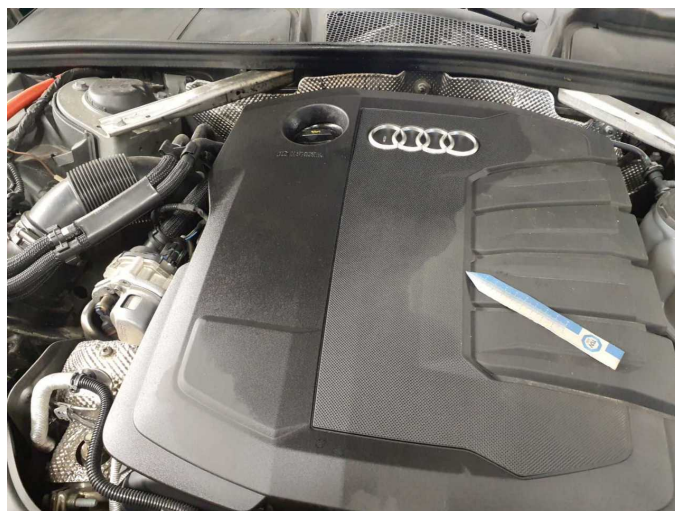
Damage 5: Door - front left side: Door edge - Scratch(es) - Smart repair



Damage 6: Rear bumper: Rear bumper - Scratch(es) - Smart repair



Damage 6: Rear bumper: Rear bumper - Scratch(es) - Smart repair



Damage 7: Engine: Engine (Öldeckel draufgelgt nicht fest/ Folgekosten möglich) - Leaking - Clean



Damage 7: Engine: Engine (Öldeckel draufgelgt nicht fest/ Folgekosten möglich) - Leaking - Clean



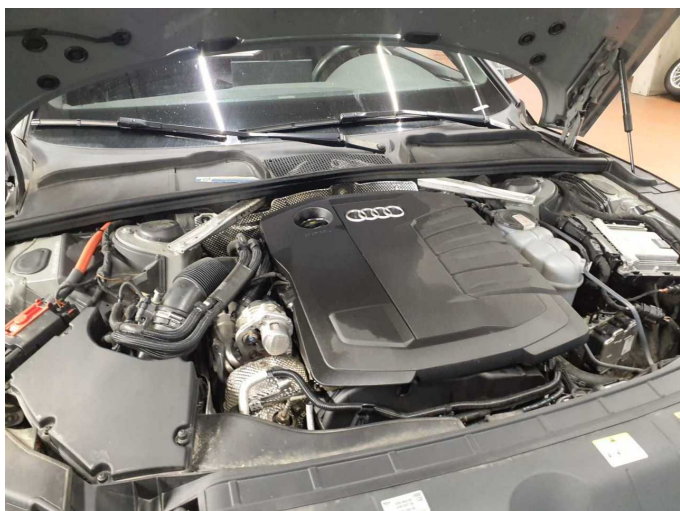
Damage 7: Engine: Engine (Öldeckel draufgelgt nicht fest/ Folgekosten möglich) - Leaking - Clean



Damage 7: Engine: Engine (Öldeckel draufgelgt nicht fest/ Folgekosten möglich) - Leaking - Clean



Damage 7: Engine: Engine (Öldeckel draufgelgt nicht fest/ Folgekosten möglich) - Leaking - Clean



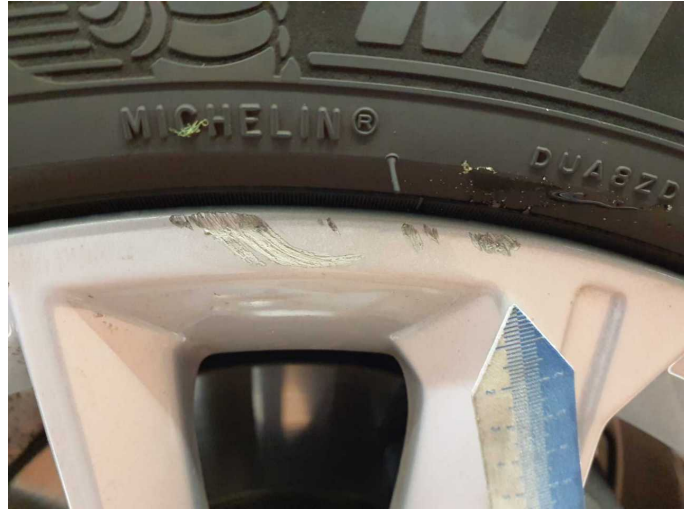
Damage 7: Engine: Engine (Öldeckel draufgelgt nicht fest/ Folgekosten möglich) - Leaking - Clean



Damage 8: Front bumper: Cover bumper - front - Scratch(es) - Replace



Damage 8: Front bumper: Cover bumper - front - Scratch(es) - Replace



Damage 9: Wheel / tyres: Alloy rim - front left side - Scratch(es) - Loss in value



Damage 9: Wheel / tyres: Alloy rim - front left side - Scratch(es) - Loss in value



Damage 10: Wheel / tyres: Alloy rim - front right side - Scratch(es) - Loss in value



Damage 10: Wheel / tyres: Alloy rim - front right side - Scratch(es) - Loss in value



Damage 10: Wheel / tyres: Alloy rim - front right side - Scratch(es) - Loss in value



Damage 11: Wheel / tyres: Alloy rim - rear right side - Scratch(es) - Paint



Damage 11: Wheel / tyres: Alloy rim - rear right side - Scratch(es) - Paint



Damage 12: 2nd wheel set: 2nd wheel set (Under 4mm) - Does not meet the leasing specifications - Replace



Damage 12: 2nd wheel set: 2nd wheel set (Under 4mm) - Does not meet the leasing specifications - Replace



Damage 12: 2nd wheel set: 2nd wheel set (Under 4mm) - Does not meet the leasing specifications - Replace



Damage 12: 2nd wheel set: 2nd wheel set (Under 4mm) - Does not meet the leasing specifications - Replace



Damage 12: 2nd wheel set: 2nd wheel set (Unter 4mm) - Does not meet the leasing specifications - Replace



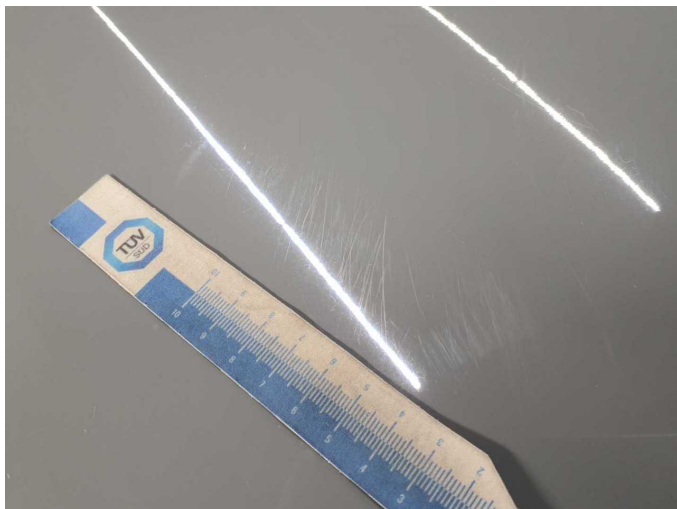
Damage 12: 2nd wheel set: 2nd wheel set (Unter 4mm) - Does not meet the leasing specifications - Replace



Damage 12: 2nd wheel set: 2nd wheel set (Unter 4mm) - Does not meet the leasing specifications - Replace



Damage 12: 2nd wheel set: 2nd wheel set (Unter 4mm) - Does not meet the leasing specifications - Replace



Damage 13: Bonnet: Bonnet - Stone chips - Paint



Damage 13: Bonnet: Bonnet - Stone chips - Paint



Damage 13: Bonnet: Bonnet - Stone chips - Paint



Damage 14: Vehicle glazing: Windscreen - Stone chips - Replace



Damage 14: Vehicle glazing: Windscreen - Stone chips - Replace



Repainting 1: Bonnet



Repainting 2: Side panel - rear left side



Repainting 3: Door - rear left side



Repainting 4: Door - front left side



Wartungshistorie

(gemäß Auftraggeber Informationen)

Fahrgestellnummer: WAUZZZF59NA021156
Hersteller / Modell: AUDI AUDI A5 Sportback 40 TDI S tronic S line

Datum	KM-Stand	Beschreibung
10.07.2025	153.876	Systemtest/Eigendiagnose
24.03.2025	138.500	AU; Bremsbelagfühler ern; Bremse Sonstiges; Bremsklötze hinten; Bremsklötze vorne; Bremsscheiben + Klötze h; Bremsscheiben + Klötze v; Bremsscheiben hinten; Bremsscheiben vorne; Motoröl b. Wartung; Ölfilter ern; Regelwartungsdienst; Wartung Sonstiges
12.08.2024	111.672	Getriebeöl ern/prüfen; Kraftstofffilter ern; Motoröl b. Wartung; Ölfilter ern; Regelwartungsdienst; Wartung Sonstiges
24.04.2024	100.312	Systemtest/Eigendiagnose
10.04.2024	98.845	Systemtest/Eigendiagnose
08.03.2024	93.614	Systemtest/Eigendiagnose
21.12.2023	85.176	Bremsbelagfühler ern; Bremse Sonstiges; Bremsflüssigkeit; Bremsflüssigkeit ern; Bremsklötze hinten; Bremsklötze vorne; Bremsscheiben hinten; Bremsscheiben vorne; Luftfiltereinsatz ern; Motoröl b. Wartung; Ölfilter ern; Regelwartungsdienst; Wartung Sonstiges
25.05.2023	56.348	Getriebeöl ern/prüfen; Kraftstofffilter ern; Motoröl b. Wartung; Ölfilter ern; Regelwartungsdienst; Reparatur Sonstiges; Wartung Sonstiges
06.10.2022	30.184	Motoröl b. Wartung; Ölfilter ern; Regelwartungsdienst; Wartung Sonstiges