



Expertise

Protocol number: 41596504  
Order No. / Reference: 25218460  
Inspection date: 17 Sept 2025

Manufacturer: Audi	Model: A5 Sportback 35 TDI S tronic advanced
VIN: WAUZZZF57MA060357	



Vehicle details	
Manufacturer / Type / Model / Equipment	
Audi A5 Sportback 35 TDI S tronic advanced	
Vehicle Identification number	WAUZZZF57MA060357
Mileage (Read)	76,399 km
First registration	17 Aug 2021
Number of holders	1
Power / Engine displacement	120 kw / 1,968 ccm
Fuel type / Cylinder	Hybrid Diesel / E / 4
Gearbox / Number of gears	Automatic / 7
Type of drive	Front drive
Type of vehicle	Coupe
Colour / colour code	Brillantschwarz (Y9B)
Doors / Seats	5 / 5
Upholstery type	Cloth
Colour of upholstery	Grey-Anthracite
Vehicle with smoke odor	no



Vehicle details			
Maintenance booklet / proof	digital proof / complete	Next maintenance in	-1 Monat(e)
Last maintenance on / at	01/2025 at 73,839 km		
Key is / should be	2 / 2	FZG documents	ZB#2 (B) was available (copy), ZB#1 (S) was not available
		Letter No.	GC398833
Previous damage / Accident	None detectable	Repainting	None detectable
Inspection conditions	sufficient	Lifting equipment / pit	yes
Test drive	short drive on the company premises	Engine function test	Performed
Manufacturer key number/ type code number	0588 / BPN 00553		
Emission standard	EURO6;WLTP;AP;PI/CI; M, N1 I	Fine dust sticker	
Permitted total weight	2,120 kg	Empty weight	

Tyres				
Mounted tyres				
#	Tyre size	Type of tyre	Manufacturer	Tread depth
1)	245/40 R18 97V	Winter tyres on Light alloy	Michelin	5mm / 6mm
2)	245/40 R18 97V	Winter tyres on Light alloy	Michelin	6mm / 6mm
Additional tyres				
#	Tyre size	Type of tyre	Manufacturer	Tread depth
1)	245/40 R18 93H	Summer tyres on Light alloy	Michelin	4mm / 4mm
2)	245/40 R18 93H	Summer tyres on Light alloy	Michelin	5mm / 5mm
Replacement				
Typ	Tyre size	Type of tyre	Manufacturer	Tread depth
	Tirefit	Expiration date 05/2025		
Legend: Tread depth information for tires on the left is in the first place, for tires on the right is in the second place on the axle in the direction of travel				

## Equipment

### Standard equipment

- Airbag: Front side airbags and head airbag system (front side airbags integrated into the seat backrests; with additional head airbag system; deploys in front of the side window area and thus helps to protect front and outer rear passengers in the event of a side impact)
- Audi drive select (adjusts the vehicle characteristics in the available modes auto, comfort, dynamic, and individual by adjusting the steering assistance, accelerator pedal and gearshift characteristics, and other optional equipment. The individual mode allows the combination of different settings for the respective systems.)
- Audi pre sense city (An impending collision with vehicles and pedestrians can be detected within system limits at speeds up to approximately 85 km/h. In this case, the system warns the driver visually, acoustically, and, if necessary, with a sudden braking action. If necessary, it can initiate full deceleration to reduce the collision speed or, under certain circumstances, avoid the collision.)
- Chassis: Standard chassis (The standard chassis combines excellent ride comfort with good driving dynamics. Shock absorbers and coil springs on the front and rear axles - with 5-link lightweight front axle, stabilizer bar; front axle carrier firmly bolted to the body - with 5-link lightweight rear axle with independent wheel suspension, stabilizer bar; rear axle carrier elastically mounted)
- Cruise control with adjustable speed limiter (The cruise control maintains the individually set speed from 20 km/h, provided the engine power permits. The adjustable speed limiter helps to avoid exceeding a preset maximum speed from approximately 30 km/h, e.g., within built-up areas)
- Decorative inlays diamond lacquer silver grey (for dashboard, door panels and center console)
- Dimmable interior mirror
- Electromechanical power steering (maintenance-free rack-and-pinion steering with speed-sensitive steering assistance; precise steering feel at high speeds, excellent parking assistance.)
- Electronic Stability Control (ESC) (networks ABS, EBV, ASR, and EDL with its own sensors and compares driving data with reference data; ensures greater stability at any speed by selectively braking individual wheels and intervening in engine management)
- Floor mats front and rear (made of black velour; in conjunction with interior design selection, interior S line or in the S model with contrasting stitching color-coordinated to the respective interior trim color)
- Folding rear seat backrest (40:20:40 split or fully foldable, with center armrest)
- Front center armrest
- AdBlue tank (12 liters)
- Airbag for driver and front passenger (full-size airbag, with passenger airbag deactivation)
- Anti-lock braking system (ABS) (with electronic brake force distribution (EBD) and brake assist)
- Audi connect Emergency Call & Service including vehicle control (Emergency Call & Service: - Emergency call - Online breakdown call - Audi damage service - Audi service appointment online Vehicle control: - Vehicle status report - Remote locking/unlocking - Parking position - Remote control auxiliary heating - Anti-theft alarm notification)
- Automatic climate control (1-zone - electronically regulates air temperature, air flow, and distribution, sun position-dependent control - air distribution can be adjusted using 5 main settings - 3 LEDs integrated into the seat heating or seat ventilation button provide feedback on the selected setting (optional) - buttons for defrosting the front and rear windows - manual air recirculation control - with key recognition and humidity sensor - dust and odor-separating interior filter)
- Brake light, third
- Diesel particulate filter (DPF) with DeNox catalyst and AdBlue tank
- Door sills with aluminum insert (on the door sills)
- Driver information system (with high-resolution 5-inch monochrome display, display contents: speed (digital speedometer), time, mileage, outside temperature, fuel warning with remaining range, gear shift recommendation, current radio station or music track, radio and media lists, phone menu, navigation information (if available). The integrated efficiency program supports the driver with consumption data overviews and tips for more economical driving; including break recommendation.)
- Electric front windows (with touch-open/close function (including excess force limiter) and comfort control)
- Electrically adjustable/heated exterior mirrors (with integrated LED indicators, convex, flat or aspherical mirror glass, including heated windscreen washer nozzles)
- Electromechanical parking brake (includes parking brake function when stationary - starting aid through automatic release when starting off and emergency braking function while driving on all four wheels)
- Electronic immobilizer (integrated in engine control unit, activated by vehicle key)
- Exterior mirror housings in body color
- Fabric headliner (atlas beige or titanium grey, colour-coordinated with the respective interior colour)
- First aid kit with warning triangle (warning triangle - first aid kit - 2 safety vests)



- Glazing: Windscreen with thermal and acoustic glazing (windscreen with thermal glazing, green tinted - improved exterior noise insulation)
- Green heat-insulating glazing (green tinted - for rear window, door and side windows - rear window heated, with timer)
- Headrests (4) (height adjustable front and rear)
- Interior lighting (roof module front and rear including reading lights in front with capacitive operation, illuminated vanity mirror, top light on center console, glove compartment light)
- ISOFIX and Top Tether child seat anchorage for the outer rear seats (standard bracket for the practical attachment of ISOFIX child seats - including additional attachment point (Top Tether) - the recommended child seats are available from your Audi partner)
- LED rear lights (indicator, brake, tail, reversing, and rear license plate lights in LED technology. LED brake lights enable earlier detection by following traffic due to their faster activation.)
- Non-smoking version (one 12-volt socket in the center console in front of the gearshift lever and one in the rear for the 2nd row of seats - no cigarette lighter)
- Phone: Bluetooth interface (The smartphone can be connected to the vehicle via Bluetooth to play music or make phone calls. Depending on the smartphone model, emails and text messages can also be displayed in the MMI via Bluetooth.)
- Radio accessories: 8 speakers
- Radio accessories: Data module Europe
- Rear parking aid (supports reverse parking by acoustically indicating the distance to a detected object behind the vehicle. Measurement by ultrasonic sensors discreetly integrated into the bumper, active when reverse gear is engaged)
- Seats (standard seats) in the front (with manual adjustment of seat height, seat length, backrest angle, headrest and belt height)
- Steering wheel: Leather steering wheel in 3-spoke design with multifunction (with 6 multifunction buttons for operating the basic functions of the existing infotainment system; adjustable in height and reach, with full-size airbag; leather steering wheel rim)
- tachometer
- Traction control
- Transmission: S tronic (7-speed)
- trunk floor mat
- Upholstery: Index fabric (for standard seats: - seat center panels in Index fabric, rock grey or black - seat side bolsters, headrests and center armrest in plain rock grey or black fabric)
- Wheel: Rolling resistance-optimized tires, speed-limited (size 245/40 R18, maximum permissible speed 210 km/h)
- Wheel: Tire repair kit (12 V compressor and tire sealant, maximum speed 80 km/h)
- Gloss package (roof frame and window channel strips in anodized aluminum)
- LED headlights (LED technology; low beam, high beam, daytime running light and position light in LED; indicator light in bulb technology, with all-weather light)
- Luggage compartment lid, electrically opening and closing (opening via the button on the vehicle key, the button in the driver's door trim, the soft-touch button in the handle recess of the lid, or a foot gesture (kick motion) in conjunction with the convenience key including sensor-controlled luggage compartment release - closing via the button on the inside of the lid, the button in the driver's door, the convenience key (continuous pressure), or a foot gesture (kick motion) in conjunction with the convenience key including sensor-controlled luggage compartment release)
- Manual parental control
- Matt black accent surfaces (for dashboard, door sill trim and center console insert)
- Mild hybrid (Mild hybrid features an enhanced start-stop function, enhanced energy recovery during braking (recuperation) to charge the starter battery, and additional lithium-ion storage. This allows the system to recover more energy and shuts off the engine more frequently. A supplementary belt starter generator (BGA) is provided for mild hybrid. Purely electric driving is not possible.)
- Outside temperature display
- Radio: MMI Radio Plus (10.1" color display (1,540 × 720) including MMI touch operation - Driver information system with 5" mono display - Audi music interface with 1 USB-A and 1 USB-C port, each with data and charging functions - Bluetooth interface (hands-free calling and audio streaming) - 8 passive speakers - AM/FM phase diversity - speed-dependent volume adjustment - Voice dialogue system with natural language for controlling infotainment and vehicle functions - Wi-Fi hardware - DAB+ digital radio)
- Remote key, without Safe-Lock (unlocks and locks doors, luggage compartment and fuel tank flap - including Keyless Go - including convenient closing/opening of windows)
- Seat belts Three-point automatic belts for all seats (belt wear detection in front, color-coordinated with the interior, belt force limiter in front, belt tensioner in front)
- Start-Stop System (helps reduce fuel consumption and CO2 emissions by shutting off the engine when stationary, e.g., at traffic lights. For a restart, the starting process is initiated as soon as the foot brake is released. Can be deactivated at any time using a button.)
- Wheel: Light alloy wheels "5-V-spoke Y-design" (8.5 J x 18 with tires 245/40 R 18)
- Wheel: Tire pressure monitoring indicator (visual and acoustic warning in case of pressure loss on one or more wheels)

## Extra equipment



- Panoramic glass roof (electric operation for extending and opening the glass element, automatic opening and closing, tinted glass insert with continuously adjustable electric sunshade. Convenient opening and closing from the outside via the remote key; the extra-large glass surface provides a pleasant, light-filled interior ambience, with good acoustics when the roof is extended or fully open. Integrated wind deflector reduces wind noise when the roof is open.)
- Steering wheel: 3-spoke leather steering wheel with multifunction plus (The height and reach of the leather steering wheel are manually adjustable. The steering wheel is equipped with 12 multifunction buttons for convenient operation of the extensive standard and optional infotainment features. The steering wheel also features a leather gearshift/selector knob and a leatherette handbrake grip.)
- AdBlue tank (24 liters)
- Business package (heated front seats - comfort mirror package - infotainment package smartphone - navigation package - leather steering wheel in 3-spoke design with multifunction plus)
- Elimination of model name and performance/technology lettering
- Fuel tank (54 liters)
- Radio accessories: Audi sound system (10 speakers including center speaker and subwoofer - 6-channel amplifier - total output of 180 watts)
- Smartphone infotainment package (Audi phone box light - Audi smartphone interface - USB charging interface for rear passengers (additional 2 USB-A charging interfaces for rear passengers in the rear center console))

## Brief expert findings

Documents submitted	At the time of the inspection, the registration certificate Part 2 (letter) was available, but the registration certificate Part 1 (certificate) was not. (Copy)
VIN comparison	The vehicle identification number (VIN) was read from the vehicle and its conformity with the submitted documents was verified during the inspection by the undersigned.
Inspection	The inspection conditions were sufficient for the assessment of the vehicle. Lifting equipment and a pit were available for examining the vehicle.
Test drive	A short movement and shunting trip was carried out on the company premises.
Engine function test	An engine test run was performed.

## Value reducing factors

No.	Component group	Description
1	Equipment	Tirefit filler - Expired - Replace
2	Bonnet	Insulation lining - Damage caused by marten / rodent - Replace
3	Door - front right side	Door - Scratch(es) - Smart repair
4	Misc.	Inspection / maintenance - Due - Perform
5	Front bumper	Front bumper - Scratched - Paint
6	Bonnet	Bonnet - Stone chips - Paint
7	Vehicle glazing	Windscreen (Sichtbereich) - Stone chips - Replace

## Wear and tear

No.	Component group	Description
1	2nd wheel set	1 alloy rim - Scratch(es) - No deduction
2	Wheel / tyres	Alloy rim - front right side (Kein Teil der Ausstattung) - Scratched - No deduction
3	Door - rear left side	Door - Stone chips - Cover / polish
4	Mudguard - right side	Mudguard - right side - Stone chips - Cover / polish
5	Seat - rear	Seat cover - 3 seater bench - Soiled - No deduction
6	Body	Body - Scratch(es)

The vehicle shows signs of wear commensurate with its age and use.



## Order/Scope of order

The order was placed to prepare a sales report for the vehicle described. This includes the following:

- Description of core relevant information about the vehicle
- Documentation of equipment features  
*(Delivery by third-party service providers)*
- Documentation of damage, defects, missing parts
- Documentation of previous damage, unrepaired previous damage, repainting
- a brief visual or functional inspection of the equipment details if possible.  
*(Functional tests of driver assistance systems are not included in the scope of services!)*
- a photo documentation of the vehicle

## Basis for the order

This product is based on the Alphabet Fuhrpark GmbH guidelines for vehicle returns and valuations. The expert makes the explicit findings in each individual case objectively within the framework of the specified standards based on his or her own expertise.

The vehicle inspection takes place in a disassembled state.

Damage or defects that can only be detected during disassembly/diagnosis work or through advanced knowledge remain within the scope of the prognosis risk. An extended risk exists for concealed defects caused by fraudulent deception and not identifiable by the expert.

Damage or defects resulting from normal use or wear and tear of the vehicle will be accepted according to the applicable standard.

There was no explicit identification or monetary consideration of the expected features within the product.

Features which in their nature and severity slightly exceed normal use but do not constitute unacceptable damage will be documented and identified under signs of use if necessary.

Damage or defects which, according to the underlying standard, can no longer be attributed to normal use or wear and tear are listed in the product under "Depreciating Factors".

Depending on the product specification, a monetary ID can be provided. If this takes place, the costs can be 100% d or pro rata depending on the vehicle's age and mileage.

## Previous damages

Apparently, no repaired previous damage could be found on the vehicle.

## Comments

- Winterradsatz ist kein Bestandteil des Auslieferumfangs.





Figure 1: Diagonal front (left)



Figure 2: Diagonal front (right)



Figure 3: Diagonal rear (left)



Figure 4: Diagonal rear (right)



Figure 5: Interior - front



Figure 6: Interior - rear





Figure 7: Instrument cluster



Figure 8: Instrument panel



Figure 9: Interior 360° view



Figure 10: Cargo area

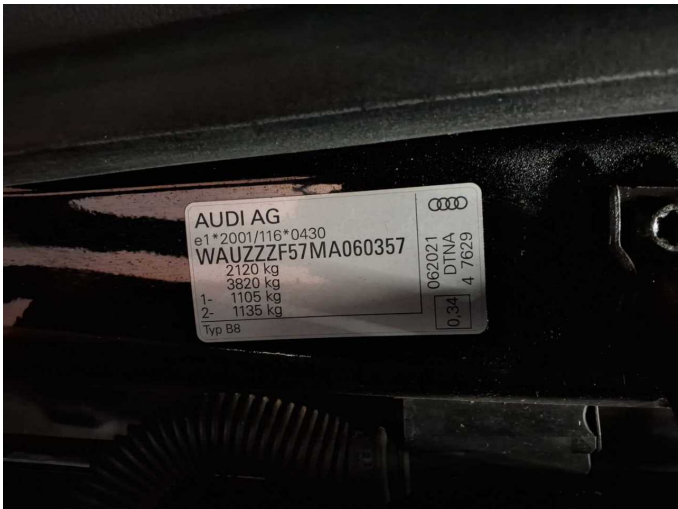


Figure 11: VIN



Figure 12: Mounted tyres





Figure 13: Documents



Figure 14: Documents



Figure 15: Documents



Figure 16: Additional tyres



Figure 17: Navigation



Figure 18: Misc.





Figure 19: Misc.



Figure 20: Misc.



Figure 21: Misc.

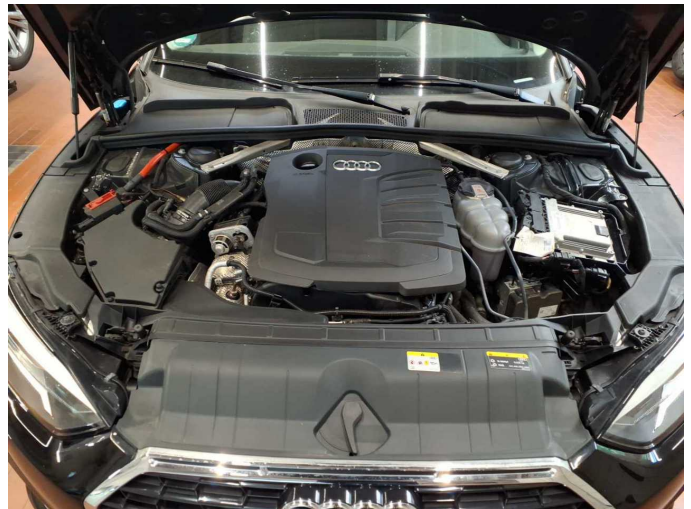


Figure 22: Misc.



Figure 23: Misc.



Figure 24: Misc.





Figure 25: Misc.



Figure 26: Misc.



Figure 27: Misc.



Figure 28: Misc.

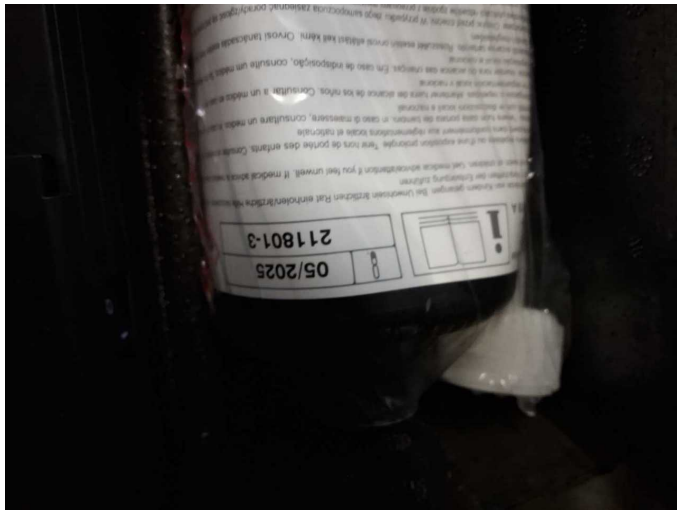


Figure 29: Misc.



Figure 30: Misc.





**Damage 1:** Equipment: Tirefit filler - Expired - Replace



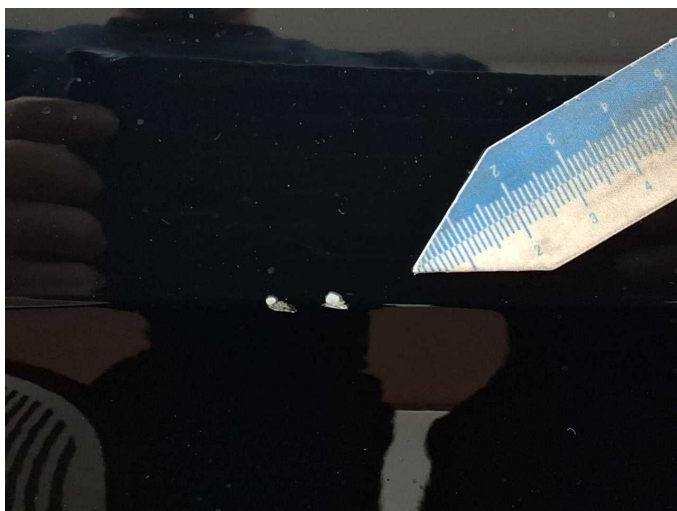
**Damage 2:** Bonnet: Insulation lining - Damage caused by marten / rodent - Replace



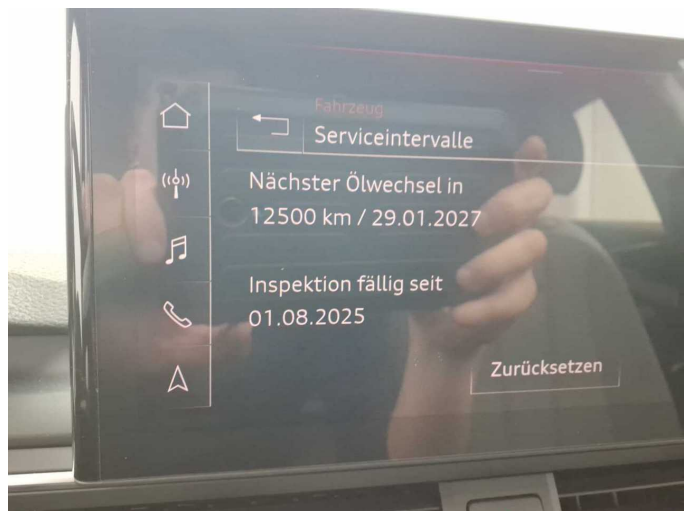
**Damage 2:** Bonnet: Insulation lining - Damage caused by marten / rodent - Replace



**Damage 3:** Door - front right side: Door - Scratch(es) - Smart repair



**Damage 3:** Door - front right side: Door - Scratch(es) - Smart repair



**Damage 4:** Misc.: Inspection / maintenance - Due - Perform



**Damage 5:** Front bumper: Front bumper - Scratched - Paint



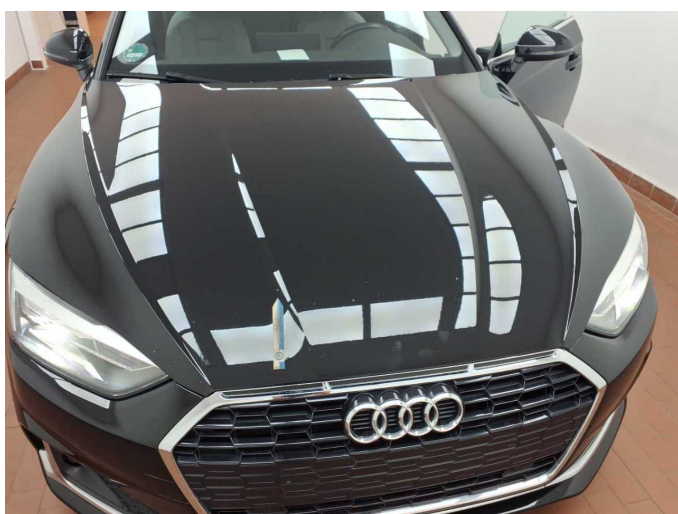
**Damage 5:** Front bumper: Front bumper - Scratched - Paint



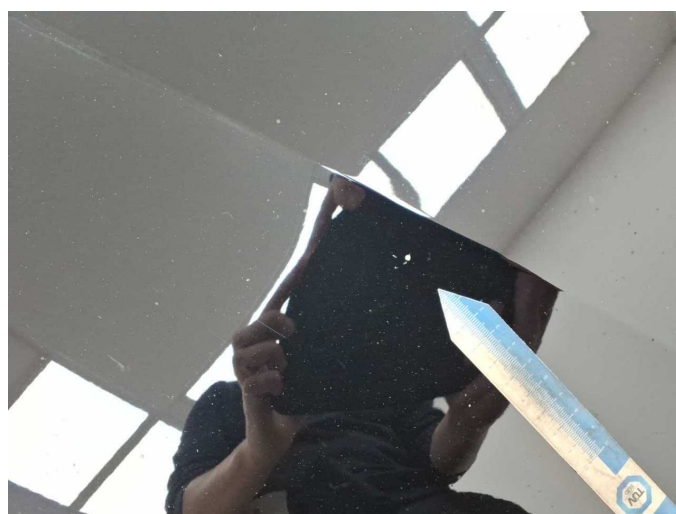
**Damage 5:** Front bumper: Front bumper - Scratched - Paint



**Damage 5:** Front bumper: Front bumper - Scratched - Paint

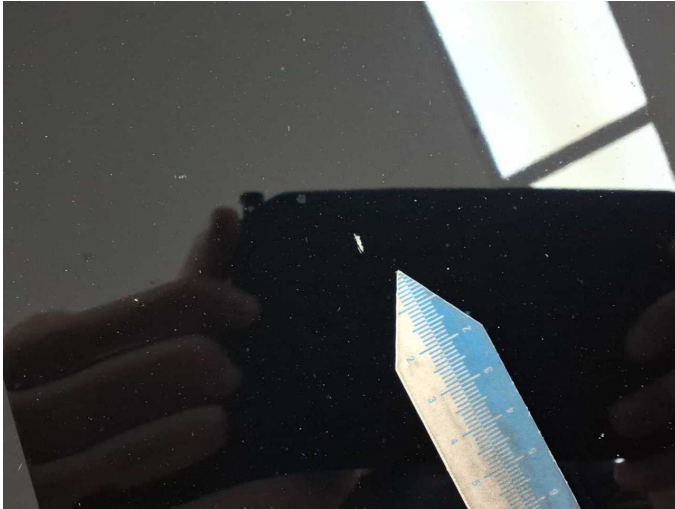


**Damage 6:** Bonnet: Bonnet - Stone chips - Paint



**Damage 6:** Bonnet: Bonnet - Stone chips - Paint





**Damage 6:** Bonnet: Bonnet - Stone chips - Paint



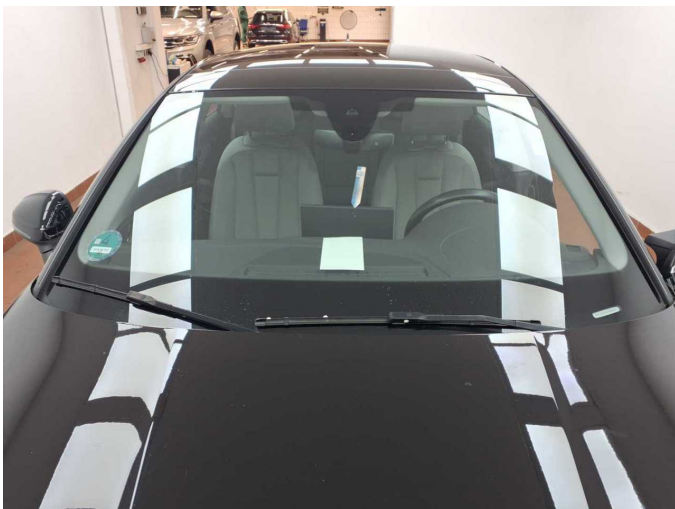
**Damage 6:** Bonnet: Bonnet - Stone chips - Paint



**Damage 6:** Bonnet: Bonnet - Stone chips - Paint



**Damage 6:** Bonnet: Bonnet - Stone chips - Paint



**Damage 7:** Vehicle glazing: Windscreen (Sichtbereich) - Stone chips - Replace



**Damage 7:** Vehicle glazing: Windscreen (Sichtbereich) - Stone chips - Replace





# Wartungshistorie

(gemäß Auftraggeber Informationen)

Fahrgestellnummer: WAUZZZF57MA060357  
Hersteller / Modell: AUDI AUDI A5 Sportback 35 TDI S tronic advanced

Datum	KM-Stand	Beschreibung
29.01.2025	73.839	Motoröl b. Wartung; Ölfilter ern; Ölwechsel; Wartung Sonstiges; Wartung Sonstiges
02.07.2024	59.461	AU; Getriebeöl ern/prüfen; Kraftstofffilter ern; Motoröl b. Wartung; Ölfilter ern; Regelwartungsdienst; Systemtest/Eigendiagnose; Wartung Sonstiges
02.02.2024	50.716	Wartung Sonstiges
16.10.2023	45.044	Motoröl b. Wartung; Ölfilter ern; Ölwechsel; Wartung Sonstiges
10.08.2023	40.670	Bremsflüssigkeit ern
23.01.2023	29.965	Motoröl b. Wartung; Regelwartungsdienst
03.03.2022	14.828	Motoröl b. Wartung; Ölwechsel