



AUDI A5

A5 Sportback 40 TDI S tronic

VIN NO WAUZZZF57KA068424
Registration Number 57KA068424



MOT Date	Number of Owners	Number of Keys	Odometer Reading
2027-01-01	2	2	154316 km
Last Service	Last Service Mileage	First Registration Date	Country First Registered
-	-	2019-08-02	Germany

Inspection Report Summary

Customer	BCA Online	Report Number	P20250912124017
Inspection Date / Place	2025-09-12 / BCA Neuss	Cosmetic Grade	4

Vehicle Summary

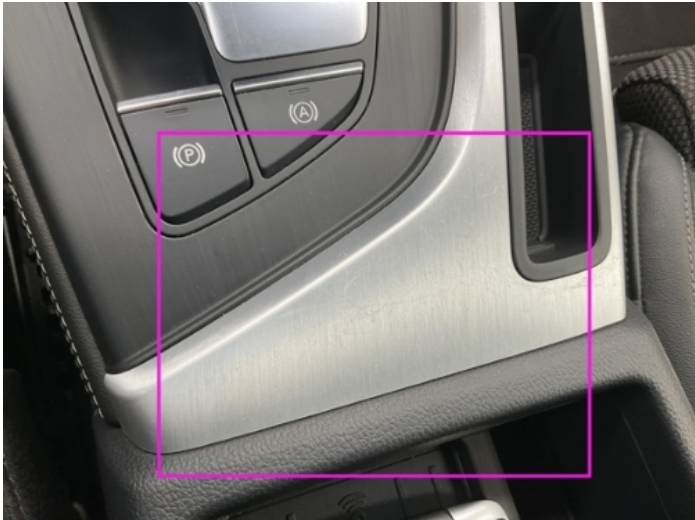
Vehicle Condition	Runner	VAT Type	Margin
Fuel Type	Diesel	Road Worthy	Yes
Colour	Grey	Engine Size (cc)	1968
Engine Size	2.0	No of Doors	5
Body Type	Coupe	Drive Train	Front
Seat Colour		No of Seats	4
Seat Covering Name	Schwarz	Seat Covering	Cloth/Leather
Charging Cables		NEDC CO2 Rating (q/km)	114
Gearbox Type	Automatic		

Vehicle History & Documents

Service Book Available	-	Next Service Mileage	km
Previous Usage		Imported	No
Manufacturer Warrenty			







Equipment

Tinted Glass	Airbag Status	Anti-lock braking	Cruise control
Front parking sensors	Remote adjusting wing mirrors	Reversing Camera	Sports seats
Electrically folding wing mirrors	Leather steering wheel	Radio	Tow ball
Alloys wheels	Bluetooth telephone interface	Diesel particulate filter	Heated wing mirrors
Remote central locking	Satellite navigation	Stability control	Electric tailgate
LED Headlamps	Rear parking sensors		

Equipment Details

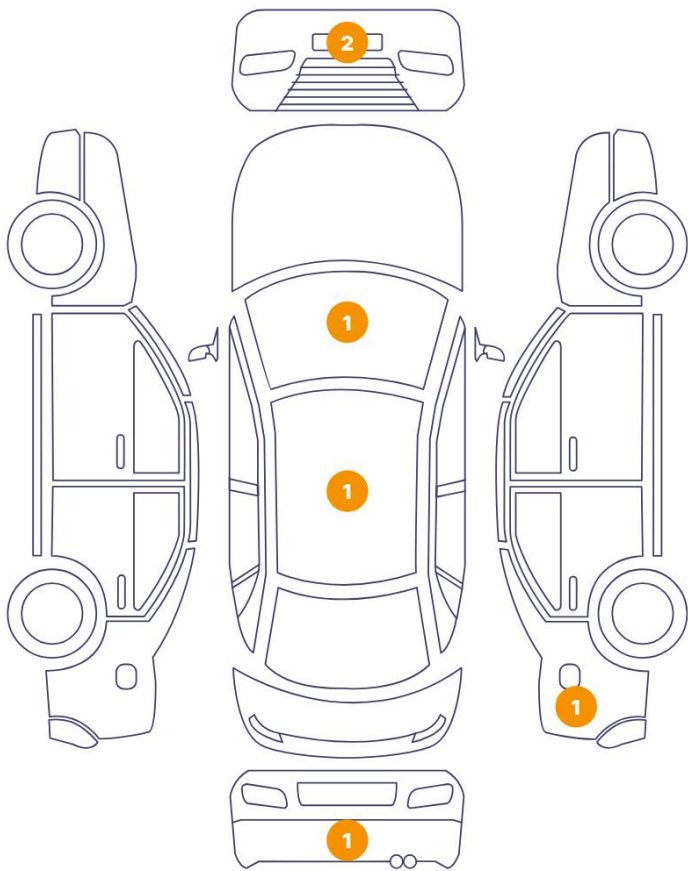
Tow Ball Type	Pivoted	Air Conditioning	Three Zone Climate Control
Alloy Wheel Size	17	Seat Heating	Front

Wheels & Tyres

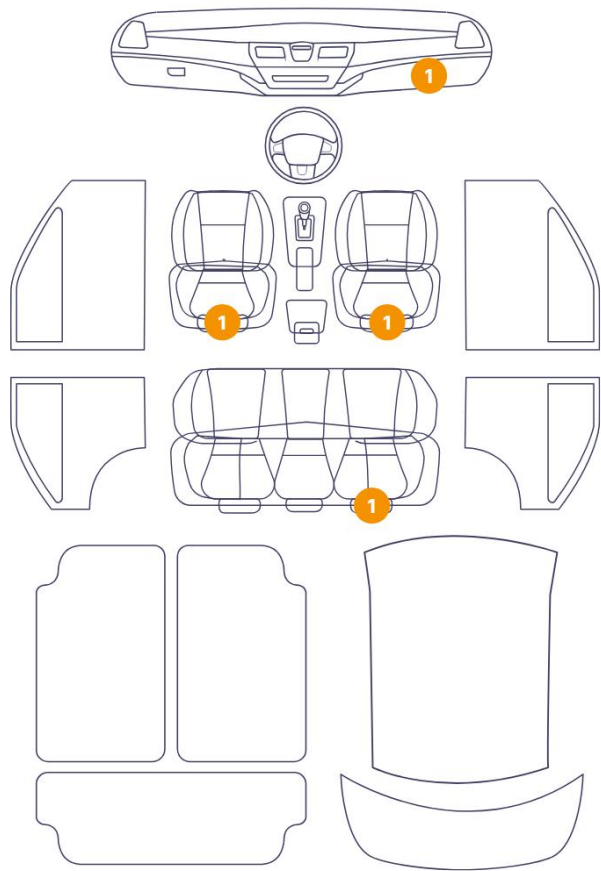
Right Front Tyre Depth	4	Left Front Tyre Depth	4
Right Rear Tyre Depth	5	Left Rear Tyre Depth	5

Cosmetic Damage

6 Schäden



4 Schäden



Component		Damage	Comments
1	Seat / Front Left	Interior / Worn - out	
2	Bumper / Back	Paint / Scratch / Scuff	
3	Fuel Door / Back Right	Bodywork / Breakage	
4	Seat / Back Right	Interior / Worn - out	
5	Seat / Front Right	Interior / Worn - out	
6	Roof	Paint / Scratch / Scuff	
7	Windshield / Front	Paint / Chipping	
8	Bumper / Front	Bodywork / Breakage / Hole	
9	Bumper / Front	Paint / Scratch / Scuff	
10	Center Console	Interior / Scratched	



1. Seat / Front Left
Interior / Worn - out -



2. Bumper / Back
Paint / Scratch / Scuff -



3. Fuel Door / Back Right
Bodywork / Breakage -



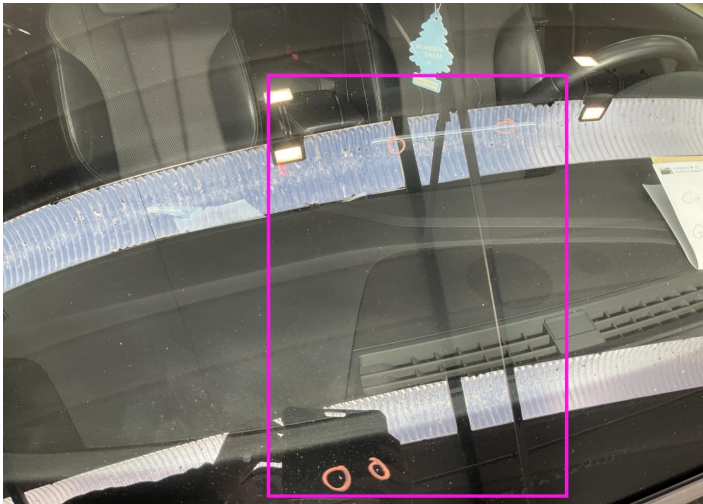
4. Seat / Back Right
Interior / Worn - out -



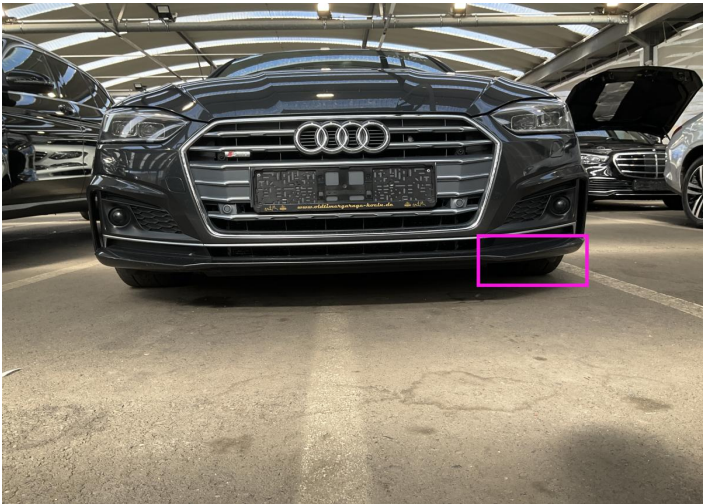
5. Seat / Front Right
Interior / Worn - out -



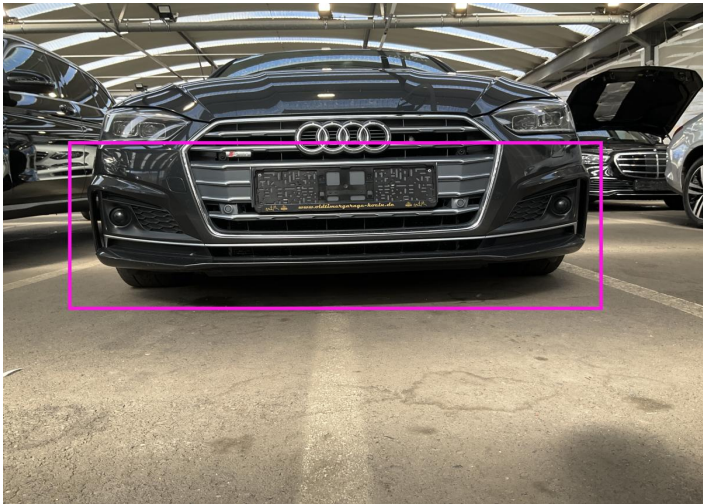
6. Roof
Paint / Scratch / Scuff -



7. Windshield / Front
Paint / Chipping -



8. Bumper / Front
Bodywork / Breakage / Hole -



9. Bumper / Front
Paint / Scratch / Scuff -



10. Center Console
Interior / Scratched -

Mechanical Condition

Control Lights

Display Defect	✓	ABS Warning Light	✓
ESP Fault/Traction Control Malfunction Light	✓	Diesel Particulate Filter Light	✓
Airbag Warning Light	✓	Oil Pressure Warning Light	✓
Brake Warning Light	✓	Power Steering Warning Light	✓
Alternator / Battery	✓	No Dashboard Lights	✓
Tire Pressure Monitoring System	✓		

Equipments Test

Main & Spare Keys Functioning	✓	Electric Windows	✓
Navigation System	✓	Parking Sensors / Cameras Functioning	✓
AC / Heating System	✓		

Engine

Engine Status / EML	✓	Engine Leak Visible	✓
Engine Starts	✓		

Gearbox

Gear Box	✓
----------	---

Levels

Coolant Fluid	✓
---------------	---

Test Drive Inspection

Steering Wheel			
Steering Noise / Anomaly		✓	
Engine			
Engine Noise	✓	The Gears Scratch / Skip / Abnormal Operation	✓
Fume Quantity	✓	Power Loss	✓
Brake			
Brake System Anomaly		✓	
General			
Test Driven Status		✓	
✓ <i>No troubles detected, good condition or correct tests, according to vehicle age and mileage</i>			
! <i>Damages or malfunction detected that requires repairs by the buyer</i>			
NA <i>Not applicable</i>			
= <i>Not tested</i>			

Disclaimer

Please also note the "UserGuide condition report", which shows the scope of the vehicle description.

[User Guide](#)