



Expertise

Protocol number: 39678751  
Order No. / Reference: 24754855  
Inspection date: 13 May 2025

Manufacturer: Audi	Model: A5 Sportback 40 TFSI S tronic
VIN: WAUZZZF53LA022302	



Vehicle details	
Manufacturer / Type / Model / Equipment	
Audi A5 Sportback 40 TFSI S tronic	
Vehicle Identification number	WAUZZZF53LA022302
Mileage (Read)	120,598 km
First registration	6 Aug 2020
Number of holders	1
Next periodical technical inspection	11/2025
(Report on hand)	
Power / Engine displacement	140 kw / 1,984 ccm
Fuel type / Cylinder	Hybrid Petrol / E / 4
Gearbox / Number of gears	Automatic / 7
Type of drive	Front drive
Type of vehicle	Saloon car
Colour / colour code	Manhattangrau Metallic (X7L)
Doors / Seats	5 / 4
Upholstery type	Cloth
Colour of upholstery	Black



## Vehicle details

<b>Maintenance booklet / proof</b>	digital proof / complete	<b>Next maintenance in</b>	28,900 km
<b>Last maintenance on / at</b>	03/2025 at 119,406 km		
<b>Key is / should be</b>	2 / 2	<b>FZG documents</b>	ZB#2 (B) was available (copy), ZB#1 (S) was not available
		<b>Letter No.</b>	FU586371
<b>Previous damage / Accident</b>	Detectable	<b>Repainting</b>	Detectable
<b>Inspection conditions</b>	Sufficient	<b>Lifting equipment / pit</b>	yes
<b>Test drive</b>	Not performed	<b>Engine function test</b>	Performed
<b>Manufacturer key number/ type code number</b>	0588 / BMR 00589		
<b>Emission standard</b>	EURO6;WLTP;DG;PI/CI; M, N1 I	<b>Fine dust sticker</b>	
<b>Permitted total weight</b>	2,070 kg	<b>Empty weight</b>	

## Tyres

### Mounted tyres

#	Tyre size	Type of tyre	Manufacturer	Tread depth
1)	225/50 R17 98H	Winter tyres on Light alloy	Goodyear	6mm / 6mm
2)	225/50 R17 98H	Winter tyres on Light alloy	Goodyear	7mm / 7mm

### Additional tyres

#	Tyre size	Type of tyre	Manufacturer	Tread depth
1)	225/50 R17 94H	Summer tyres on Light alloy	Continental	2mm / 2mm
2)	225/50 R17 94H	Summer tyres on Light alloy	Continental	3mm / 3mm

### Replacement

Typ	Tyre size	Type of tyre	Manufacturer	Tread depth
	Tirefit	Expiration date 06/2024		

**Legend:** Tread depth information for tires on the left is in the first place, for tires on the right is in the second place on the axle in the direction of travel



## Equipment

### Standard equipment

- Airbag for driver and front passenger
- Accent surfaces matt black
- Traction control
- Audi drive select
- Audi pre sense city
- Exterior mirror housings in body color
- Brake light, third
- decorative inlays diamond lacquer silver gray
- Door sills with aluminum insert
- Electronic Stability Control ESC
- Chassis: Standard chassis
- Windscreen with acoustic glazing
- Floor mats front and rear
- cruise control system with adjustable speed limiter
- Interior lighting
- Manual parental control
- trunk floor mat
- Headrests (4)
- LED headlights
- Front center armrest
- Gasoline particulate filter
- Wheel: Tire pressure monitoring indicator
- Wheel: Rolling resistance optimized tires, speed limited
- Radio accessories: Data module Europe
- Folding rear seat backrest
- Seat belts Three-point automatic belts for all seats
- Phone: Bluetooth interface
- Electronic immobilizer
- Airbag: Front side airbags and head airbag system
- Anti-lock braking system (ABS)
- Audi connect emergency call & service including vehicle control
- Exterior mirrors electrically adjustable/heated
- Outside temperature display
- Fabric headliner
- tachometer
- Electromechanical parking brake
- Driver information system
- Electric front windows
- radio key, without Safe-Lock
- Luggage compartment lid, electrically opening and closing
- Transmission: S tronic (7-speed)
- Dimmable interior mirror
- ISOFIX and Top Tether child seat anchorage for the outer rear seats
- LED rear lights
- Mild hybrid
- Non-smoking version
- Gloss Package
- Wheel: Tire repair kit
- Radio: MMI Radio Plus
- Radio accessories: Digital radio reception (DAB)
- Power steering, electromechanical
- Start-stop system
- Bandage material with warning triangle

### Extra equipment

- Audi connect key (Now your smartphone becomes a digital vehicle key. Your mobile phone performs functions that you know from your Audi key: opening and closing the vehicle and starting the engine to begin your journey.)
- Elimination of model name and technology lettering
- 3-zone comfort automatic climate control (in addition to the automatic climate control: - climate control unit with large TFT display and capacitive rocker buttons - electronically regulates the air temperature and distribution individually for the driver and front passenger - additional climate control unit for setting the rear compartment temperature in the rear center console - automatic air recirculation control via air quality sensor, with dust and odor-separating allergen filter - ventilated glove compartment - dust and odor-separating interior filter - residual heat utilization)
- Fuel tank (54 liters)
- Paint finish: metallic
- Audi virtual cockpit with 12.3" color display (Innovative, fully digital instrument cluster for flexible and needs-based display of the respective information according to the driver's needs: speed/rpm, map display, Audi connect services, radio/media information, etc.; the VIEW button on the multifunction steering wheel enables switching between two different sized displays of the round instruments. The display with small instruments enables large, clear graphics of the on-board computer and the MMI content)
- Convenience key with sensor-controlled luggage compartment release (wireless communication between the key and the vehicle to open the doors and the luggage compartment lid and close it again using the sensors on the door handles. The convenience key only needs to be carried with you. The engine is started and stopped using the engine start-stop button. The luggage compartment lid can also be conveniently unlocked with a foot gesture by kicking the rear, provided you don't have a free hand.)



- Steering wheel: Leather steering wheel in 3-spoke design with multifunction plus and shift paddles (with 14 multifunction buttons for convenient operation of the existing infotainment features, such as audio skip, telephony, NAV button or the freely programmable button; adjustable in height and distance, with full-size airbag)
- Parking assistance package (parking aid plus - hold assist - rear view camera)
- Business package (heated front seats - comfort mirror package - infotainment package smartphone - navigation package - leather steering wheel in 3-spoke design with multifunction plus)
- Package Comfort Seat Package (variable headrests for the front seats - 4-way lumbar support for the front seats, electrically adjustable horizontally and vertically - comfort center armrest at the front, longitudinally adjustable and adjustable in inclination; additional storage option in the integrated storage compartment)
- Parking Assistant including Parking Aid Plus (automatic steering when parking. Ultrasonic sensors are used to search for suitable parallel or parallel parking spaces. The parking path is calculated for perpendicular parking spaces, and the entry and exit paths for parallel parking spaces. The driver must accelerate, shift gears, and brake, as well as monitor the parking process. The system handles the steering process itself. Activated via a button on the center console.)
- Radio accessories: Audi sound system (10 speakers including center speaker and subwoofer - 6-channel amplifier - total output of 180 watts)
- Front sports seats (with manual adjustment of seat height, seat fore/aft position, seat angle, backrest angle, headrest and belt height; with pronounced seat side bolsters for better lateral support in curves, extendable thigh support)
- Glazing: Privacy glazing (tinted windows) (rear window, rear door and side windows tinted)
- Winter wheels with 4 aluminum wheels, 225/50R17 7FH
- Driving Assistance Package (Audi active lane assist - Audi adaptive cruise control - Audi pre sense rear and basic - Traffic jam assistant - Predictive efficiency assistant - Evasion assistant - Left turn assistant - High beam assistant - Driver information system with color display - Camera-based traffic sign recognition - Lane change warning)
- Package Infotainment package Smartphone in conjunction with navigation package (Audi phone box light - Audi smartphone interface - USB charging interface for the rear passengers (additional 2 USB-A charging interfaces for rear passengers in the rear center console))
- Package: Ambient lighting package (in addition to the interior lighting: - Courtesy lighting in the outside door handles - Entry lights on the underside of the front doors - Illuminated cup holders at the front - Footwell lighting at the front - Illuminated interior door controls - Ambient door lighting - Ambient lighting at the front center console)
- Upholstery: Fabric system (for front sports seats: - seat centre panels in fabric system black or black-red - seat side bolsters, thigh support, headrests and centre armrest in front in plain black fabric)
- Wheel: light alloy wheels, 15-spoke design (7.5 J x 17 with winter tires 225/50 R 17 - suitable for snow chains, maximum permissible speed 210 km/h)
- Electrically adjustable front seats (electric adjustment of seat height, seat length positioning, seat and backrest angle)
- Surround cameras (The four wide-angle surround cameras cover the entire area immediately surrounding the vehicle and enable a variety of different views for even more convenient maneuvering. The driver can select different views on the MMI display, making it easier to position the vehicle in the parking space. Virtual view from above, rear view camera view, panoramic view front and rear, curb view)

## Brief expert findings

Documents submitted	At the time of the inspection, the registration certificate part 2 (letter) was available, but the registration certificate part 1 (certificate) was not available. (Copy)
VIN comparison	The vehicle identification number (VIN) was read and the undersigned verified that it matched the documents submitted during the inspection.
Inspection	The inspection conditions were sufficient for the assessment of the vehicle. Lifting equipment and a pit were available for examining the vehicle.
Test drive	No test drive/maneuvering was carried out during the inspection of the vehicle.
Engine function test	An engine test run was performed.

## Value reducing factors

No.	Component group	Description
1	Equipment	Tirefit filler - Expired - Replace
2	Wing mirror - right side	Mirror housing (Blinker) - Scratched - Replace
3	Steering system	Steering wheel - Abrasion - Smart repair



No.	Component group	Description
4	Electronic systems	Front camera - Stone chips - Loss in value
5	Rear bumper	Rear bumper - Scratch(es) - Paint
6	Front bumper	Front bumper - Scratched - Repair and paint
7	Bonnet	Bonnet - Stone chips - Paint
8	Vehicle glazing	Windscreen (viele Steinschläge) - repair according to calculation

## Wear and tear

No.	Component group	Description
1	Roof	Roof rail - left side - Stone chips - No deduction

The vehicle shows signs of wear commensurate with its age and use.

## Previous damages

No.	Previous damage	Extent of damage (Net)
1	Side right, Provided by user / customer, from 16 Apr 2022	1.815,64 €

## Repainting

No.	Repainting
1	Side panel - rear right side, Door - rear right side, Professionally carried out, Invoice of repair done Non-existent

## Paint coat thickness measurement

Side panel - rear right side	178 µm	Door - rear right side	204 µm
------------------------------	--------	------------------------	--------

## Order/Scope of order

The order was placed to prepare a sales report for the vehicle described. This includes the following:

- Description of core relevant information about the vehicle
- Documentation of equipment features  
(Delivery by third-party service providers)
- Documentation of damage, defects, missing parts
- Documentation of previous damage, unrepaired previous damage, repainting
- a brief visual or functional inspection of the equipment details if possible.  
(Functional tests of driver assistance systems are not included in the scope of services!)
- a photo documentation of the vehicle



## Basis for the order

This product is based on the Alphabet Fuhrpark GmbH guidelines for vehicle returns and valuations. The expert makes the explicit findings in each individual case objectively within the framework of the specified standards based on his or her own expertise.

The vehicle inspection takes place in a disassembled state.

Damage or defects that can only be detected during disassembly/diagnosis work or through advanced knowledge remain within the scope of the prognosis risk. An extended risk exists for concealed defects caused by fraudulent deception and not identifiable by the expert.

Damage or defects resulting from normal use or wear and tear of the vehicle will be accepted according to the applicable standard.

There was no explicit identification or monetary consideration of the expected features within the product.

Features which in their nature and severity slightly exceed normal use but do not constitute unacceptable damage will be documented and identified under signs of use if necessary.

Damage or defects which, according to the underlying standard, can no longer be attributed to normal use or wear and tear are listed in the product under "Depreciating Factors".

Depending on the product specification, a monetary ID can be provided. If this takes place, the costs can be 100% d or pro rata depending on the vehicle's age and mileage.

## Previous damages

According to available information previous damages were repaired at the vehicle. Traces of repairs, which allow conclusions about the area of repair, were not recognizable during the inspection.





ALPHABET

Figure 1: Diagonal front (left)



ALPHABET

Figure 2: Diagonal front (right)



ALPHABET

Figure 3: Diagonal rear (left)



ALPHABET

Figure 4: Diagonal rear (right)



Figure 5: Interior - front



Figure 6: Interior - rear





Figure 7: Instrument cluster



Figure 8: Instrument panel



Figure 9: interior 360° view



Figure 10: Cargo area



Figure 11: VIN



Figure 12: Mounted tyres





Figure 13: Documents



Figure 14: Documents



Figure 15: Additional tyres



Figure 16: Navigation

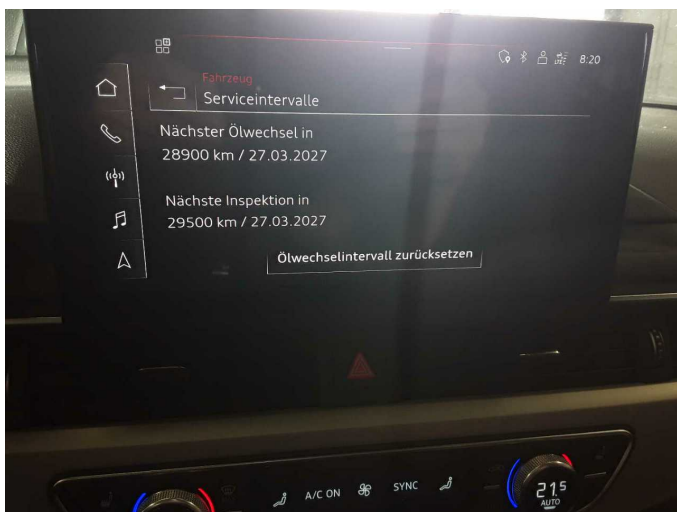


Figure 17: Misc.



Figure 18: Misc.



Figure 19: Misc.



Figure 20: Misc.



Figure 21: Misc.



Figure 22: Misc.



Figure 23: Misc.



Figure 24: Misc.





Figure 25: Misc.



Figure 26: Misc.



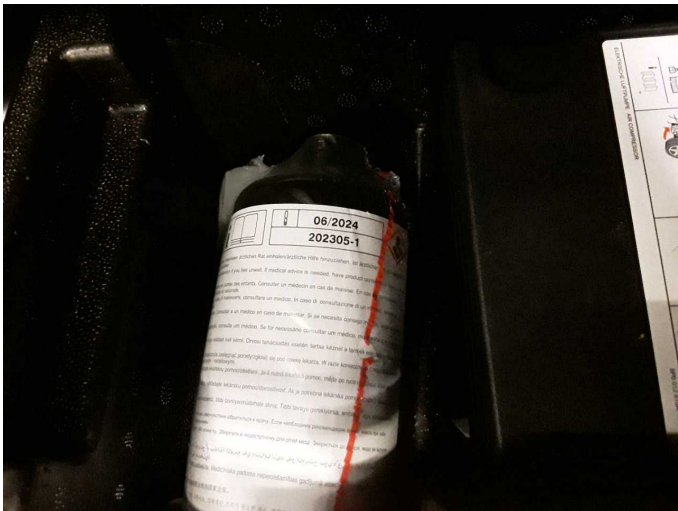
Figure 27: Misc.



Figure 28: Misc.



Figure 29: Misc.



Damage 1: Equipment: Tirefit filler - Expired - Replace

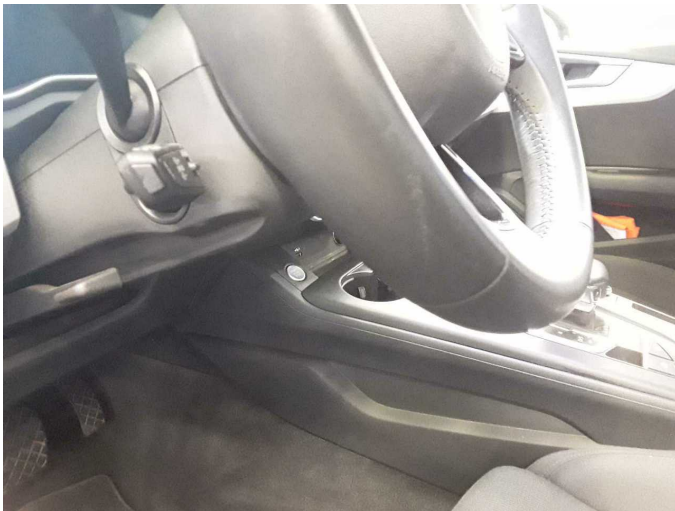




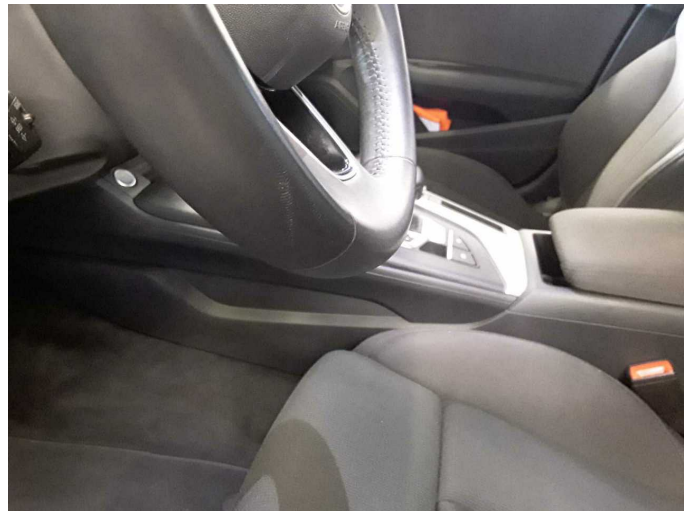
**Damage 2:** Wing mirror - right side: Mirror housing (Blinker) - Scratched - Replace



**Damage 2:** Wing mirror - right side: Mirror housing (Blinker) - Scratched - Replace



**Damage 3:** Steering system: Steering wheel - Abrasion - Smart repair



**Damage 3:** Steering system: Steering wheel - Abrasion - Smart repair

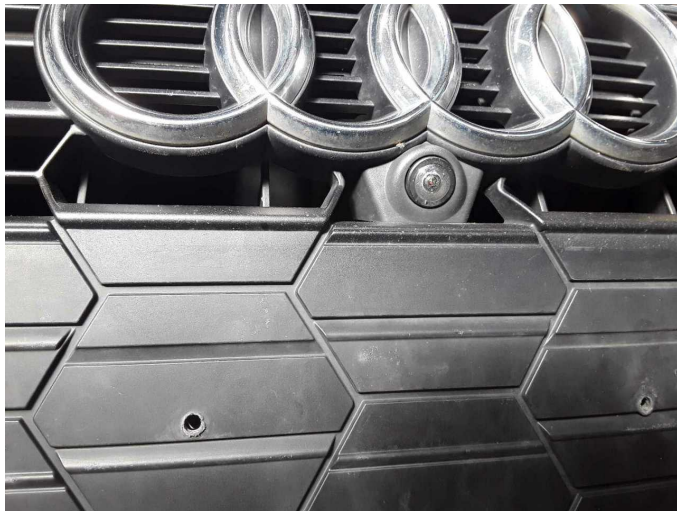


**Damage 4:** Electronic systems: Front camera - Stone chips - Loss in value



**Damage 4:** Electronic systems: Front camera - Stone chips - Loss in value





**Damage 4:** Electronic systems: Front camera - Stone chips - Loss in value



**Damage 5:** Rear bumper: Rear bumper - Scratch(es) - Paint



**Damage 5:** Rear bumper: Rear bumper - Scratch(es) - Paint



**Damage 5:** Rear bumper: Rear bumper - Scratch(es) - Paint



**Damage 5:** Rear bumper: Rear bumper - Scratch(es) - Paint



**Damage 6:** Front bumper: Front bumper - Scratched - Repair and paint





**Damage 6:** Front bumper: Front bumper - Scratched - Repair and paint



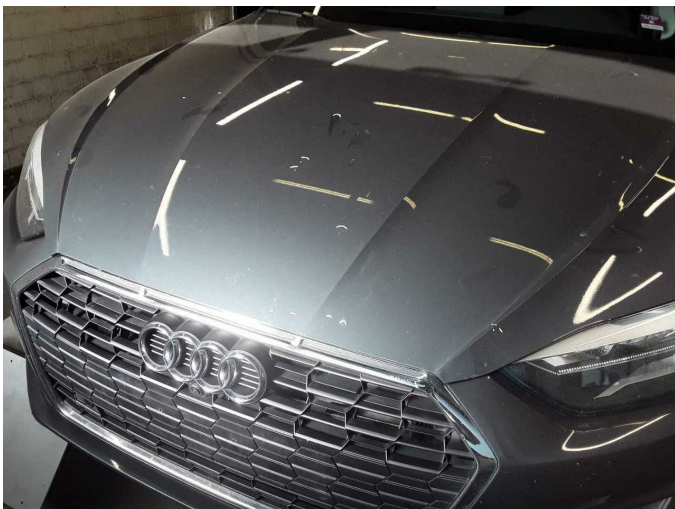
**Damage 6:** Front bumper: Front bumper - Scratched - Repair and paint



**Damage 6:** Front bumper: Front bumper - Scratched - Repair and paint



**Damage 6:** Front bumper: Front bumper - Scratched - Repair and paint



**Damage 7:** Bonnet: Bonnet - Stone chips - Paint



**Damage 7:** Bonnet: Bonnet - Stone chips - Paint

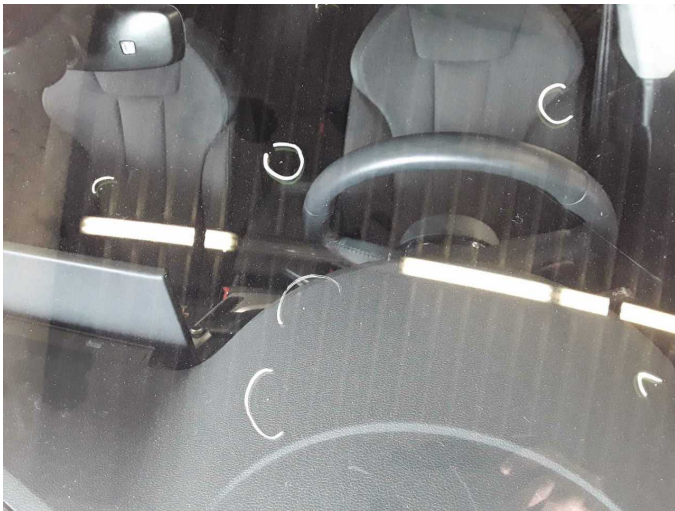




**Damage 7:** Bonnet: Bonnet - Stone chips - Paint



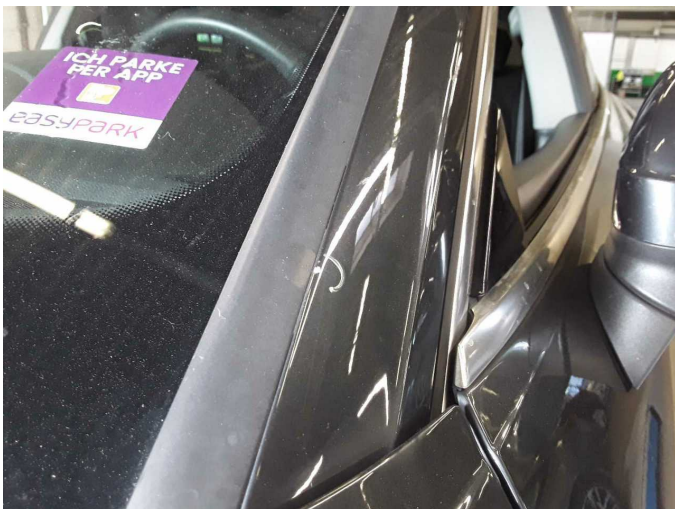
**Damage 8:** Vehicle glazing: Windscreen (viele Steinschläge) - repair according to calculation



**Damage 8:** Vehicle glazing: Windscreen (viele Steinschläge) - repair according to calculation



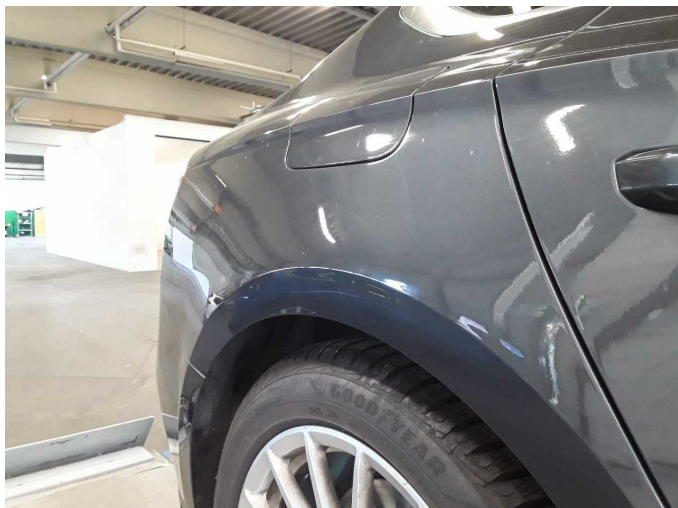
**Damage 8:** Vehicle glazing: Windscreen (viele Steinschläge) - repair according to calculation



**Wear and tear 1:** Roof: Roof rail - left side - Stone chips - No deduction



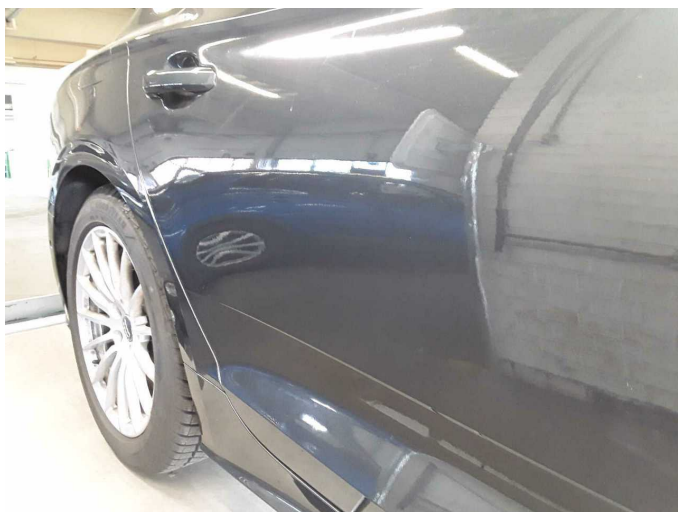
**Side panel - rear right side:** 178 µm



Side panel - rear right side: 178  $\mu\text{m}$



Door - rear right side: 204  $\mu\text{m}$



Door - rear right side: 204  $\mu\text{m}$