



Expertise

Protocol number: 39958758
Order No. / Reference: 24825519
Inspection date: 27 May 2025

Manufacturer: Audi	Model: A5 Sportback 40 TFSI S tronic S line
VIN: WAUZZZF50NA029663	



Vehicle details	
Manufacturer / Type / Model / Equipment	
Audi A5 Sportback 40 TFSI S tronic S line	
Vehicle Identification number	WAUZZZF50NA029663
Mileage (Read)	72,532 km
First registration	8 Apr 2022
Number of holders	1
Power / Engine displacement	150 kw / 1,984 ccm
Fuel type / Cylinder	Hybrid Petrol / E / 4
Gearbox / Number of gears	Automatic / 7
Type of drive	Front drive
Type of vehicle	Saloon car
Colour / colour code	Distriktgrün Metallic (X6M)
Doors / Seats	5 / 5
Upholstery type	Cloth / leather combination
Colour of upholstery	Anthracite-Black
Vehicle with smoke odor	no



Vehicle details

Maintenance booklet / proof	digital proof / complete	Next maintenance in	17,200 km
Last maintenance on / at	10/2024 at 59,728 km		
Key is / should be	2 / 2	FZG documents	ZB#2 (B) was available (copy), ZB#1 (S) was not available
		Letter No.	GJ049534
Previous damage / Accident	None detectable	Repainting	None detectable
Inspection conditions	Sufficient	Lifting equipment / pit	yes
Test drive	Short drive on the company premises	Engine function test	Performed
Manufacturer key number/ type code number	0588 / BUS 00315		
Emission standard	EURO6;WLTP;AP;PI/CI; M, N1 I	Fine dust sticker	
Permitted total weight	2,085 kg	Empty weight	

Tyres

Mounted tyres

#	Tyre size	Type of tyre	Manufacturer	Tread depth
1)	225/50 R17 98H	Winter tyres on Light alloy	Continental	4mm / 4mm
2)	225/50 R17 98H	Winter tyres on Light alloy	Continental	4mm / 4mm

Additional tyres

#	Tyre size	Type of tyre	Manufacturer	Tread depth
1)	245/40 R18 93Y	Summer tyres on Light alloy	Continental	6mm / 6mm
2)	245/40 R18 93Y	Summer tyres on Light alloy	Continental	5mm / 5mm

Replacement

Typ	Tyre size	Type of tyre	Manufacturer	Tread depth
	Tirefit	Expiration date 01/2026		

Legend: Tread depth information for tires on the left is in the first place, for tires on the right is in the second place on the axle in the direction of travel

Equipment

Equipment

- Klimaautomatik

Standard equipment

- Airbag for driver and front passenger (full-size airbag, with passenger airbag deactivation)
- Anti-lock braking system (ABS) (with electronic brake force distribution (EBD) and brake assist)
- Traction control
- Audi connect Emergency Call & Service including vehicle control (Emergency Call & Service: - Emergency call - Online breakdown call - Audi damage service - Audi service appointment online Vehicle control: - Vehicle status report - Remote locking/unlocking - Parking position - Remote control auxiliary heating - Anti-theft alarm notification)
- Electrically adjustable/heated exterior mirrors (with integrated LED indicators, convex, flat or aspherical mirror glass, including heated windscreen washer nozzles)
- Exterior mirror housings in body color
- Outside temperature display
- Brake light, third
- Fabric headliner (atlas beige or titanium grey, colour-coordinated with the respective interior colour)
- Door sills with aluminum inserts at the front, illuminated, with S lettering
- Electromechanical parking brake (includes parking brake function when stationary - starting aid through automatic release when starting off and emergency braking function while driving on all four wheels)
- Driver information system (with high-resolution 5-inch monochrome display, display contents: speed (digital speedometer), time, mileage, outside temperature, fuel warning with remaining range, gear shift recommendation, current radio station or music track, radio and media lists, phone menu, navigation information (if available). The integrated efficiency program supports the driver with consumption data overviews and tips for more economical driving; including break recommendation.)
- Floor mats front and rear (made of black velour; in conjunction with interior design selection, interior S line or in the S model with contrasting stitching color-coordinated with the respective interior color)
- Cruise control with adjustable speed limiter (The cruise control maintains the individually set speed from 20 km/h, provided the engine power permits. The adjustable speed limiter helps to avoid exceeding a preset maximum speed from approximately 30 km/h, e.g., within built-up areas)
- Transmission: S tronic (7-speed)
- Airbag: Front side airbags and head airbag system (front side airbags integrated into the seat backrests; with additional head airbag system; deploys in front of the side window area and thus helps to protect front and outer rear passengers in the event of a side impact)
- Audi drive select (setting the vehicle characteristics in the available modes auto, comfort, dynamic, individual by adjusting the steering assistance, accelerator or gearshift characteristics and other optional equipment. The individual mode enables the combination of different settings for the respective systems.)
- Audi pre sense city (An impending collision with vehicles and pedestrians can be detected within system limits at speeds up to approximately 85 km/h. In this case, the system warns the driver visually, acoustically, and, if necessary, with a sudden braking action. If necessary, it can initiate full deceleration to reduce the collision speed or, under certain circumstances, avoid the collision.)
- tachometer
- Rear parking aid (supports reverse parking by acoustically indicating the distance to a detected object behind the vehicle, measurement by ultrasonic sensors discreetly integrated into the bumper, active when reverse gear is engaged)
- Electronic Stability Control (ESC) (networks ABS, EBV, ASR, and EDL with its own sensors and compares driving data with reference data; ensures greater stability at any speed by selectively braking individual wheels and intervening in engine management)
- Chassis (sports chassis) (with tighter suspension and damping for more direct road contact and sporty handling)
- Electric front windows (with touch-open/close function (including excess force limiter) and comfort control)
- Radio key, without Safe-Lock (unlocks and locks doors, luggage compartment and fuel tank flap - including Keyless-Go - including convenient closing/opening of windows)
- Luggage compartment lid, electrically opening and closing (opening via the button on the vehicle key, the button in the driver's door trim, the soft-touch button in the handle recess of the lid, or a foot gesture (kick motion) in conjunction with the convenience key including sensor-controlled luggage compartment release - closing via the button on the inside of the lid, the button in the driver's door, the convenience key (continuous pressure), or a foot gesture (kick motion) in conjunction with the convenience key including sensor-controlled luggage compartment release)
- Dimmable interior mirror



- Interior lighting (roof module front and rear including reading lights at the front, capacitive operation, illuminated make-up mirror, top light on center console, glove compartment light)
- Manual parental control
- Automatic climate control (1 zone - electronically regulates the air temperature, quantity and distribution, sun position-dependent control - the air distribution can be adjusted using 5 main settings - 3 LEDs integrated into the seat heating or seat ventilation button provide feedback on the selected setting (optional) - buttons for defrosting the front and rear windows - manual recirculation control - with key recognition and humidity sensor - dust and odor-separating interior filter)
- LED headlights (LED technology; low beam, high beam, daytime running light and position light in LED; indicator light in bulb technology, with all-weather light)
- Mild hybrid (mild hybrid has an extended start-stop function, extended energy recovery when braking (recuperation) to charge the starter battery and additional lithium-ion storage. This allows the system to recover more energy and switches the engine off more often. A supplementary belt starter generator (RSG) is conceptually provided for mild hybrid. Purely electric driving is not possible.)
- Gasoline particulate filter
- Upholstery: Index fabric (for standard seats: - seat centre panels in Index fabric, rock grey or black - seat side bolsters, headrests and centre armrest in plain fabric, rock grey or black)
- Wheel: Tire repair kit (12 V compressor and tire sealant, maximum speed 80 km/h)
- Wheel: Rolling resistance optimized tires, speed limited (size 245/40 R18 maximum permissible speed 210 km/h)
- Radio accessories: 8 speakers
- Radio accessories: Data module Europe
- Folding rear seat backrest (split in 40:20:40 ratio or completely foldable, with center armrest)
- Electromechanical power steering (maintenance-free rack-and-pinion steering with speed-sensitive steering assistance; precise steering feel at high speeds, excellent parking assistance.)
- Seats (standard seats) in the front (with manual adjustment of seat height, seat length, backrest angle, headrest and belt height)
- Phone: Bluetooth interface (The smartphone can be connected to the vehicle via Bluetooth to play music or make phone calls. Two mobile phones can be connected simultaneously for hands-free calling. Complete contact information is only displayed on the first main phone—stored in the MMI. Depending on the smartphone model, emails and text messages can also be displayed in the MMI via Bluetooth.)
- Electronic immobilizer (integrated in engine control unit, activated by vehicle key)
- ISOFIX and Top Tether child seat anchorage for the outer rear seats (standard bracket for the practical attachment of ISOFIX child seats - including additional attachment point (Top Tether) - the recommended child seats are available from your Audi partner)
- Trunk floor mat
- Headrests (4) (height adjustable front and rear)
- LED rear lights (indicator, brake, tail, reversing and rear license plate lights in LED technology. Brake lights in LED technology enable earlier detection by following traffic due to faster activation.)
- Steering wheel: Leather steering wheel in 3-spoke design with multifunction (with 6 multifunction buttons for operating the basic functions of the existing infotainment system; adjustable in height and reach, with full-size airbag; leather steering wheel rim)
- Front center armrest
- Non-smoking version (one 12-volt socket in the center console at the front in front of the gearshift/selector lever and at the rear for the 2nd row of seats - no cigarette lighter)
- Gloss package (roof frame and window channel strips in anodized aluminum)
- Wheel: Light alloy wheels "5-double-spoke design" (S-Design) (8.5 J x 18 with tires 245/40 R 18)
- Wheel: Tire pressure monitoring indicator (visual and acoustic warning in case of pressure loss on one or more wheels)
- Radio: MMI Radio Plus (10.1" color display (1,540 × 720) including MMI touch operation - Driver information system with 5" mono display - Audi music interface with 1 USB-A and 1 USB-C port, each with data and charging functions - Bluetooth interface (hands-free calling and audio streaming) - 8 passive speakers - AM/FM phase diversity - speed-dependent volume adjustment - Voice dialogue system with natural language for controlling infotainment and vehicle functions - Wi-Fi hardware - DAB+ digital radio)
- Seat belts Three-point automatic belts for all seats (belt wear detection in front, color-coordinated with the interior, belt force limiter in front, belt tensioner in front)
- Start-Stop System (helps reduce fuel consumption and CO2 emissions by shutting off the engine when stationary, e.g., at traffic lights. For a restart, the starting process is initiated as soon as the foot brake is released. Can be deactivated at any time using a button.)
- First aid kit with warning triangle (warning triangle - first aid kit - 2 safety vests)
- Glazing: Windscreen with thermal and acoustic glazing (windscreen with thermal glazing, green tinted - improved exterior noise insulation)
- Green heat-insulating glazing (green tinted - for rear window, door and side windows - rear window heated, with timer)

Extra equipment



- Airbag: Rear side airbags
- Audi virtual cockpit with 12.3" color display (Innovative, fully digital instrument cluster for flexible and needs-based display of the respective information according to the driver's needs: speed/rpm, map display, Audi connect services, radio/media information, etc.; the VIEW button on the multifunction steering wheel enables switching between two different sized displays of the round instruments. The display with small instruments enables large, clear graphics of the on-board computer and the MMI content)
- Driving Assistance Package (Audi active lane assist - Audi adaptive cruise control - Audi pre sense rear and basic - Traffic jam assistant - Predictive efficiency assistant - Evasion assistant - Left turn assistant - High beam assistant - Driver information system with color display - Camera-based traffic sign recognition - Lane change warning)
- Glazing: Privacy glazing (tinted windows) (rear window, rear door and side windows tinted)
- Matt brushed aluminum decorative inlays
- Package Comfort Seat Package (variable headrests for the front seats - 4-way lumbar support for the front seats, electrically adjustable horizontally and vertically - comfort center armrest at the front, longitudinally adjustable and adjustable in inclination; additional storage option in the integrated storage compartment)
- Package: Ambient lighting package plus (in addition to the ambient lighting package: interactive and individual color profile. The interactive color profile is controlled by the Audi drive select modes. There are 30 colors to choose from for the individual color profile. The color adjustments are made for contour or ambient lighting scopes: - Rear footwell lighting - Front cup holder (multi-colored) - Ambient door lighting front/rear (multi-colored) - Contour lighting front/rear doors (multi-colored))
- Radio accessories: Audi sound system (10 speakers including center speaker and subwoofer - 6-channel amplifier - total output of 180 watts)
- Seats: Electrically adjustable front seats with memory function for the driver's seat (with electrical adjustment of seat height, seat fore/aft position, seat and backrest angle; with memory function for the driver's side: 2 memory locations for the electrically adjustable front seats and the exterior mirrors, can be saved and recalled via the memory buttons in the door trim)
- Telephone: Smartphone interface with USB rear in V. with navigation package (Audi Smartphone Interface - Bluetooth interface)
- Accent surfaces in black glass look (for dashboard, door sill panels and center console insert; in conjunction with automatic transmission including cover for storage compartment in the center console)
- Auxiliary heating/ventilation (The auxiliary heating heats the interior and removes ice from the windows without starting the engine. The auxiliary ventilation supplies fresh air and lowers the interior temperature. Both functions can be activated using a timer and a separate radio remote control. An intelligent control system with a timer and departure time programming calculates the heating duration in a time- and energy-efficient manner. 2 heating modes can be selected: -defrost Defrost mode for the windows only -warm Warm-up mode for additional preheating of the interior)
- Business package (heated front seats - comfort mirror package - infotainment package smartphone - navigation package - leather steering wheel in 3-spoke design with multifunction plus)
- Elimination of model name and performance/technology lettering
- Fuel tank (54 liters)
- Package: Black plus optics package
- Package: carbon style (includes the following elements: - Rear lid spoiler in carbon - Exterior mirror housings in carbon - Decorative film Audi rings in floret silver or brilliant black)
- Paint finish: metallic
- Parking assistance package (parking aid plus - hold assist - rear view camera)
- S line interior package (front sports seats - S line seat upholstery in black sequence fabric/leather combination with S embossing on the front seat backrests - 3-spoke leather steering wheel with multifunction plus including steering wheel grips in perforated leather and S emblem; steering wheel and gearshift gaiter with color-coordinated contrasting stitching - headliner in black fabric - matt brushed aluminum inlays with gloss black accents - stainless steel pedals and footrest - front and rear floor mats with contrasting stitching)
- Steering wheel: Leather steering wheel in 3-spoke design with multifunction plus
- Three-seater rear seat system (distinctive outer rear seats, optically matched to the front seats and an additional central seating option - 3 rear headrests in L-shape, manually adjustable in height, for a better view to the rear, rear seat backrest can be split in a ratio of 40:20:40 or folded down completely)
- Upholstery: Fabric sequence/leather with S line embossing in the front seat backrests



Brief expert findings

Documents submitted	At the time of the inspection, the registration certificate part 2 (letter) was available, but the registration certificate part 1 (certificate) was not available. (Copy)
VIN comparison	The vehicle identification number (VIN) was read and the undersigned verified that it matched the documents submitted during the inspection.
Inspection	The inspection conditions were sufficient for the assessment of the vehicle. Lifting equipment and a pit were available for examining the vehicle.
Test drive	A short maneuvering and shunting trip was carried out on the company premises.
Engine function test	An engine test run was performed.

Value reducing factors

No.	Component group	Description
1	Front bumper	Spoiler - Scratched - Smart repair
2	2nd wheel set	1 alloy rim (Optischer Mangel) - Scratched - Loss in value
3	Front bumper	Front bumper (Unterhalb) - Scratched - Smart repair
4	Rear bumper	Rear bumper (Zierleiste) - Broken / torn - Replace
5	2nd wheel set	1 alloy rim (Materialabtrag zu groß/tief, Sicherheitsrelevant) - Damaged - Replace

Wear and tear

No.	Component group	Description
1	Vehicle glazing	Windscreen - Stone chips - No deduction

The vehicle shows signs of wear commensurate with its age and use.

Missing parts

Description

Heating system - Remote control auxiliary heating

Order/Scope of order

The order was placed to prepare a sales report for the vehicle described. This includes the following:

- Description of core relevant information about the vehicle
- Documentation of equipment features
(*Delivery by third-party service providers*)
- Documentation of damage, defects, missing parts
- Documentation of previous damage, unrepaired previous damage, repainting
- a brief visual or functional inspection of the equipment details if possible.
(*Functional tests of driver assistance systems are not included in the scope of services!*)
- a photo documentation of the vehicle



Basis for the order

This product is based on the Alphabet Fuhrpark GmbH guidelines for vehicle returns and valuations. The expert makes the explicit findings in each individual case objectively within the framework of the specified standards based on his or her own expertise.

The vehicle inspection takes place in a disassembled state.

Damage or defects that can only be detected during disassembly/diagnosis work or through advanced knowledge remain within the scope of the prognosis risk. An extended risk exists for concealed defects caused by fraudulent deception and not identifiable by the expert.

Damage or defects resulting from normal use or wear and tear of the vehicle will be accepted according to the applicable standard.

There was no explicit identification or monetary consideration of the expected features within the product.

Features which in their nature and severity slightly exceed normal use but do not constitute unacceptable damage will be documented and identified under signs of use if necessary.

Damage or defects which, according to the underlying standard, can no longer be attributed to normal use or wear and tear are listed in the product under "Depreciating Factors".

Depending on the product specification, a monetary ID can be provided. If this takes place, the costs can be 100% d or pro rata depending on the vehicle's age and mileage.

Previous damages

Apparently, no repaired previous damage could be found on the vehicle.

Comments

- Der montierte Radsatz gehört nicht zur Ausstattung und wurde nicht in der Bewertung berücksichtigt.



Figure 1: Diagonal front (left)



Figure 2: Diagonal front (right)



Figure 3: Diagonal rear (left)



Figure 4: Diagonal rear (right)



Figure 5: Interior - front



Figure 6: Interior - rear



Figure 7: Instrument cluster



Figure 8: Instrument panel



Figure 9: interior 360° view



Figure 10: Cargo area

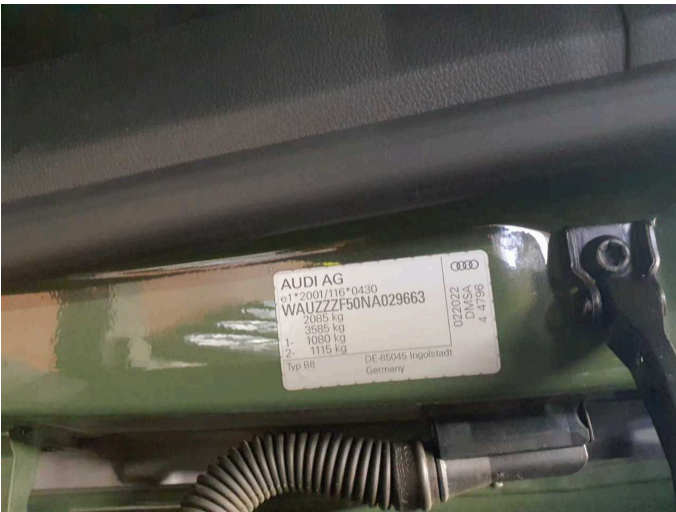


Figure 11: VIN



Figure 12: Mounted tyres



Figure 13: Documents



Figure 14: Documents



Figure 15: Documents



Figure 16: Additional tyres

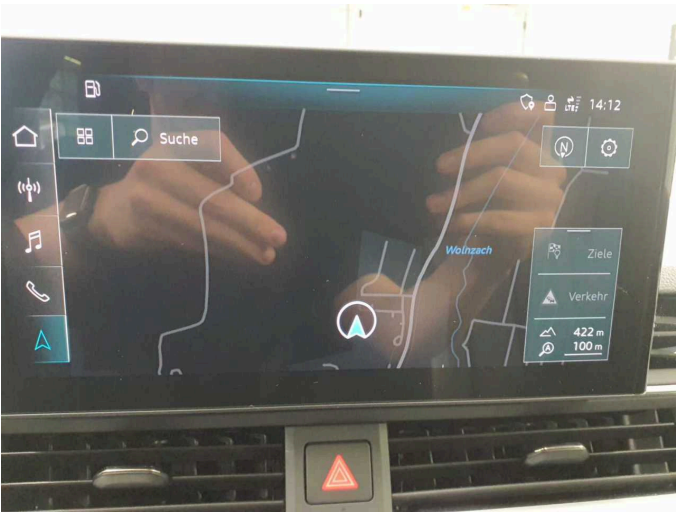


Figure 17: Navigation



Figure 18: Misc.



Figure 19: Misc.



Figure 20: Misc.

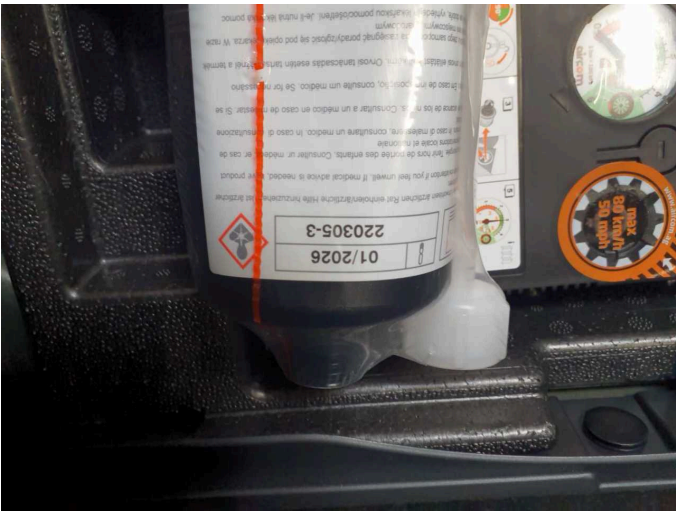


Figure 21: Misc.



Figure 22: Misc.



Figure 23: Misc.



Figure 24: Misc.



Figure 25: Misc.

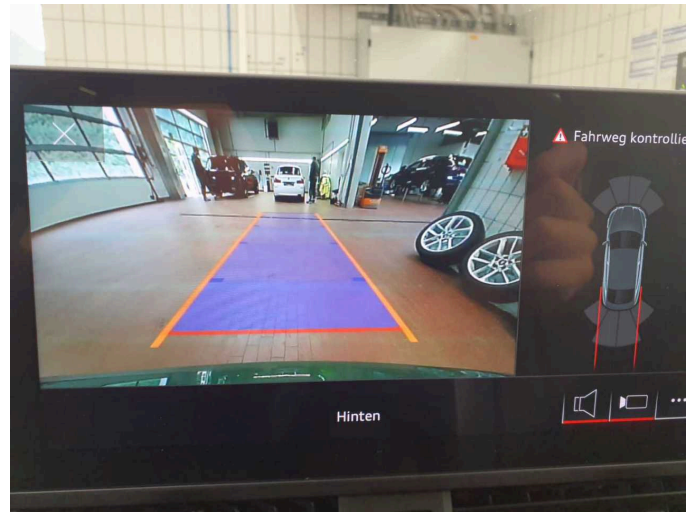


Figure 26: Misc.



Damage 1: Front bumper: Spoiler - Scratched - Smart repair



Damage 1: Front bumper: Spoiler - Scratched - Smart repair



Damage 1: Front bumper: Spoiler - Scratched - Smart repair



Damage 2: 2nd wheel set: 1 alloy rim (Optischer Mangel) - Scratched - Loss in value



Damage 2: 2nd wheel set: 1 alloy rim (Optischer Mangel) - Scratched - Loss in value



Damage 3: Front bumper: Front bumper (Unterhalb) - Scratched - Smart repair



Damage 3: Front bumper: Front bumper (Unterhalb) - Scratched - Smart repair



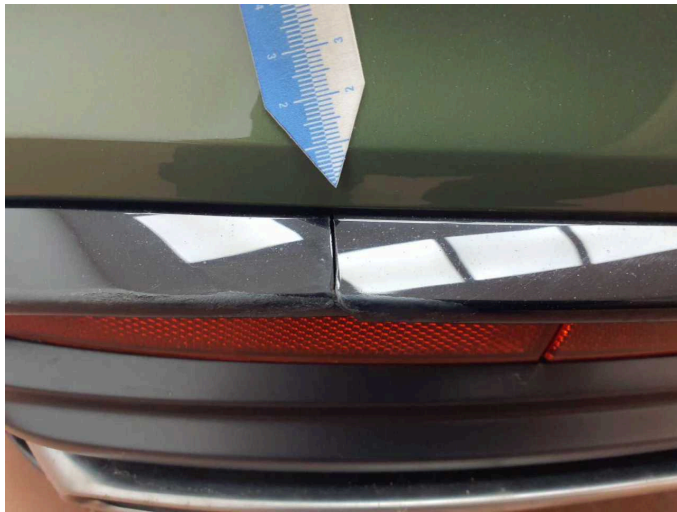
Damage 3: Front bumper: Front bumper (Unterhalb) - Scratched - Smart repair



Damage 3: Front bumper: Front bumper (Unterhalb) - Scratched - Smart repair



Damage 3: Front bumper: Front bumper (Unterhalb) - Scratched - Smart repair



Damage 4: Rear bumper: Rear bumper (Zierleiste) - Broken / torn - Replace



Damage 4: Rear bumper: Rear bumper (Zierleiste) - Broken / torn - Replace



Damage 4: Rear bumper: Rear bumper (Zierleiste) - Broken / torn - Replace



Damage 4: Rear bumper: Rear bumper (Zierleiste) - Broken / torn - Replace



Damage 5: 2nd wheel set: 1 alloy rim (Materialabtrag zu groß/tief, Sicherheitsrelevant) - Damaged - Replace



Damage 5: 2nd wheel set: 1 alloy rim (Materialabtrag zu groß/tief, Sicherheitsrelevant) - Damaged - Replace



Damage 5: 2nd wheel set: 1 alloy rim (Materialabtrag zu groß/tief, Sicherheitsrelevant) - Damaged - Replace