



Expertise

Protocol number: 41705901
Order No. / Reference: 25272340
Inspection date: 25 Sept 2025

Manufacturer: Audi	Model: A4 40 TDI S tronic S line
VIN: WAUZZZF4XMA018868	



Vehicle details	
Manufacturer / Type / Model / Equipment	
Audi A4 40 TDI S tronic S line	
Vehicle Identification number	WAUZZZF4XMA018868
Mileage (Read)	166,145 km
First registration	27 Nov 2020
Number of holders	1
Power / Engine displacement	150 kw / 1,968 ccm
Fuel type / Cylinder	Hybrid Diesel / E / 4
Gearbox / Number of gears	Automatic / 7
Type of drive	Front drive
Type of vehicle	Saloon car
Colour / colour code	ibisweiss (Y9C)
Doors / Seats	4 / 5
Upholstery type	Cloth
Colour of upholstery	Grey



Vehicle details

Maintenance booklet / proof	Non-existent	Next maintenance in	13,900 km
Key is / should be	2 / 2	FZG documents	ZB#2 (B) was available (copy), ZB#1 (S) was not available
		Letter No.	FX328161
Previous damage / Accident	None detectable	Repainting	None detectable
Inspection conditions	sufficient	Lifting equipment / pit	yes
Test drive	Not performed	Engine function test	Performed
Manufacturer key number/ type code number	0588 / BWI 00015		
Emission standard	EURO6;WLTP;AP;PI/CI; M, N1 I	Fine dust sticker	
Permitted total weight	2,100 kg	Empty weight	

Tyres

Mounted tyres

#	Tyre size	Type of tyre	Manufacturer	Tread depth
1)	245/40 R18 93H	Summer tyres on Light alloy	Michelin	4mm / 4mm
2)	245/40 R18 97H	All-season tyres on Light alloy	Pirelli	7mm / 7mm

Replacement

Typ	Tyre size	Type of tyre	Manufacturer	Tread depth
	Tirefit	Expiration date 09/2024		

Legend: Tread depth information for tires on the left is in the first place, for tires on the right is in the second place on the axle in the direction of travel

Equipment

Standard equipment

- AdBlue tank (12 liters)
- Airbag: Front side airbags and head airbag system
- Anti-lock braking system (ABS)
- Audi connect emergency call & service with Audi connect Remote & Control
- Exterior mirrors electrically adjustable and heated
- Vehicle tool kit
- Fabric headliner
- Diesel particulate filter (DPF)
- Door sills with aluminum inserts at the front, illuminated, with S lettering
- Electronic Stabilization Control (ESC)
- Chassis: Sports suspension
- Window sill strips in black (rubber)
- Floor mats front and rear
- Cruise control including speed limiter
- Top speed limited to 210 km/h
- Dimmable interior mirror
- ISOFIX and Top Tether child seat attachment for the outer rear seats
- Headrests (5)
- LED rear lights
- Steering wheel: Leather steering wheel in 3-spoke design with multifunction
- Mild hybrid
- Non-smoking version
- Wheel: Rolling resistance optimized tires, speed limited
- Radio accessories: 8 speakers (passive) front and rear
- Tire pressure monitoring display
- Power steering, electromechanical
- Seats: Standard seats in the front
- Start-stop system
- Glazing: Windscreen in acoustic glazing
- Electronic immobilizer
- Airbag for driver and front passenger
- Accent surfaces matt black
- Traction control (ASR)
- Audi drive select
- Audi pre sense city
- Exterior mirror housings in body color
- Brake light, third raised
- Decorative inlays diamond lacquer silver grey
- tachometer
- Electromechanical parking brake
- Electronic differential lock (EDS)
- Driver Information System
- Electric window lifter
- Radio key, without SafeLock
- Luggage compartment lid, automatically opening
- Transmission: S tronic 7-speed
- Interior lighting
- Parental controls
- Automatic air conditioning
- trunk floor mat
- Load compartment cover manually
- LED headlights
- Steering column, manually height and axially adjustable
- Light/rain sensor
- Front center armrest
- Wheel: Light alloy wheels, 5-Y-spokes (S-Design)
- Radio: MMI Radio plus
- Radio accessories: Digital radio reception (DAB)
- Tire repair kit
- Seat covers in fabric index
- Seats: Front seats manually adjustable
- Bandage material with warning triangle
- Glazing: Heat-insulating glazing tinted green
- Central locking "Keyless-Go" without safe security

Extra equipment

- Audi connect Navigation & Infotainment (Online Points of Interest - Online Traffic Information - Hazard Information - Online Traffic Sign Information - Weather Information - Calendar Access - Wi-Fi Hotspot - Online News - Navigation with Google Earth - Online Search for Navigation Destinations - Online Voice Input - Highly Detailed 3D City Map - On-Street Parking - Online Radio - Hybrid Radio - Traffic Light Information - Personal Profiles)
- Electrically adjustable, heated, and foldable exterior mirrors, automatically dimming on both sides (including automatic curbside mirror function for the passenger side mirror with integrated LED indicators, including heated windshield washer nozzles. The automatic curbside mirror folds down when reverse gear is engaged, giving the driver a better view of the curb)



- Driver information system with color display (with high-resolution 7" color display - display contents: speed, time, mileage, outside temperature, fuel warning with remaining range, gear shift recommendation, current radio station or music track, radio and media lists, phone menu (in conjunction with multifunction steering wheel), navigation information (if available). On-board computer with short- and long-term memory - including break recommendation)
- Paint finish: Uni
- Steering wheel: Leather-wrapped 3-spoke steering wheel with multifunction plus (The steering wheel impresses with its high-quality appearance and aluminum trim and fits comfortably in the hand. The height and reach of the steering wheel are manually adjustable. For convenient operation of the extensive standard and optional infotainment features, the steering wheel is equipped with 12 multifunction buttons. It also features shift paddles for manual gear changes with automatic transmissions.)
- Tour assistance package in conjunction with Business package (adaptive cruise control including Stop&Go function - traffic jam assistant - predictive efficiency assistant - Audi pre sense city (standard) - Audi pre sense front - evasive maneuver assistant - left turn assistant - camera-based traffic sign recognition - high beam assistant - Audi active lane assist)
- Front seat heating (heats seat and backrest center panels; with leather upholstery, sports seats, and S-sport seats, also seat side bolsters - individually adjustable in multiple stages for driver and passenger side using the climate control panel)
- Parking Aid Plus (Acoustic and visual parking aids at the front and rear assist with parking and maneuvering. With selective, visual display of the distance to detected objects on the MMI display, depending on the current steering angle and direction of travel. The virtual lane indicator also offers lateral guidance lines that are calculated in advance based on the currently selected steering angle. Measurement is performed by ultrasonic sensors discreetly integrated into the bumpers.)
- Fuel tank with increased filling volume (54 l)
- Matrix LED headlights, LED rear lights, and headlight cleaning system (Matrix LED technology combines a camera system with LED light sources and precise optics for highly adaptive light distribution. In addition to the Matrix LED function, the headlights feature the following functions: Daytime running lights, low beam, high beam, position light, dynamic indicator light, cornering light, all-weather light, maneuvering light, motorway light, dynamic cornering light, automatic dynamic headlight range control, coming-home/leaving-home function, headlight cleaning system, LED rear lights)
- Business package (MMI navigation plus with MMI touch (including driver information system with color display) - Audi phone box - 3-spoke leather steering wheel with multifunction plus - Heated front seats - Frameless, automatically dimming interior mirror - Electrically adjustable, heated, and folding exterior mirrors with automatic dimming on both sides - Rear parking aid - High beam assistant - Manual sunblind for the rear door windows)

Brief expert findings

Documents submitted	At the time of the inspection, the registration certificate Part 2 (letter) was available, but the registration certificate Part 1 (certificate) was not. (Copy)
VIN comparison	The vehicle identification number (VIN) was read from the vehicle and its conformity with the submitted documents was verified during the inspection by the undersigned.
Inspection	The inspection conditions were sufficient for the assessment of the vehicle. Lifting equipment and a pit were available for examining the vehicle.
Test drive	No test drive/maneuvering was carried out during the inspection of the vehicle.
Engine function test	An engine test run was performed.

Value reducing factors

No.	Component group	Description
1	Misc.	Main inspection - No evidence - No deduction
2	Misc.	Inspection / maintenance (Historie fehlt) - No evidence - No deduction
3	Equipment	Tirefit filler - Expired - Replace
4	Door - rear right side	Door - dent(s) - Smooth repair work
5	Door - front left side	Door - dent(s) - Smooth repair work
6	Wheel / tyres	Tyre - front right side (Flanke, nicht fahrbereit) - Damaged - Replace
7	Door - front right side	Door - Deformed - Repair and paint
8	Bonnet	Bonnet - Dent / paintcoat damage - Repair and paint
9	Sill - right side	Sill (und Leiste) - Dent / paintcoat damage - repair according to calculation



No.	Component group	Description
10	Front bumper	Front bumper - Scratched - Paint
11	Vehicle glazing	Windscreen (Rissbildung) - Stone chips - repair according to calculation
12	Rear bumper	Rear bumper (mit Spoiler, Verkratzt) - Broken / torn - repair according to calculation

Order/Scope of order

The order was placed to prepare a sales report for the vehicle described. This includes the following:

- Description of core relevant information about the vehicle
- Documentation of equipment features
(*Delivery by third-party service providers*)
- Documentation of damage, defects, missing parts
- Documentation of previous damage, unrepaired previous damage, repainting
- a brief visual or functional inspection of the equipment details if possible.
(*Functional tests of driver assistance systems are not included in the scope of services!*)
- a photo documentation of the vehicle

Basis for the order

This product is based on the Alphabet Fuhrpark GmbH guidelines for vehicle returns and valuations. The expert makes the explicit findings in each individual case objectively within the framework of the specified standards based on his or her own expertise.

The vehicle inspection takes place in a disassembled state.

Damage or defects that can only be detected during disassembly/diagnosis work or through advanced knowledge remain within the scope of the prognosis risk. An extended risk exists for concealed defects caused by fraudulent deception and not identifiable by the expert.

Damage or defects resulting from normal use or wear and tear of the vehicle will be accepted according to the applicable standard.

There was no explicit identification or monetary consideration of the expected features within the product.

Features which in their nature and severity slightly exceed normal use but do not constitute unacceptable damage will be documented and identified under signs of use if necessary.

Damage or defects which, according to the underlying standard, can no longer be attributed to normal use or wear and tear are listed in the product under "Depreciating Factors".

Depending on the product specification, a monetary ID can be provided. If this takes place, the costs can be 100% d or pro rata depending on the vehicle's age and mileage.

Previous damages

Apparently, no repaired previous damage could be found on the vehicle.

Comments

Die beigefügte Reparaturkostenkalkulation wurde nach bestem Wissen und Gewissen unter eingeschränkten Besichtigungsbedingung im demontagefreien Zustand erstellt. Es können aufgrund verdeckter Beschädigung, Mehrkosten und somit Abweichung der für die Stoßstange ausgewiesenen Reparaturkosten nicht ausgeschlossen werden.



Figure 1: Diagonal front (left)



Figure 2: Diagonal front (right)



Figure 3: Diagonal rear (left)



Figure 4: Diagonal rear (right)



Figure 5: Interior - front



Figure 6: Interior - rear



Figure 7: Instrument cluster



Figure 8: Instrument panel



Figure 9: Interior 360° view ([Online link](#))

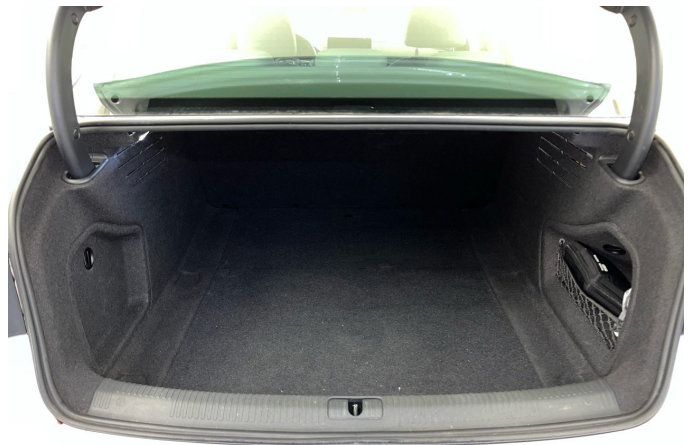


Figure 10: Cargo area



Figure 11: VIN



Figure 12: Mounted tyres

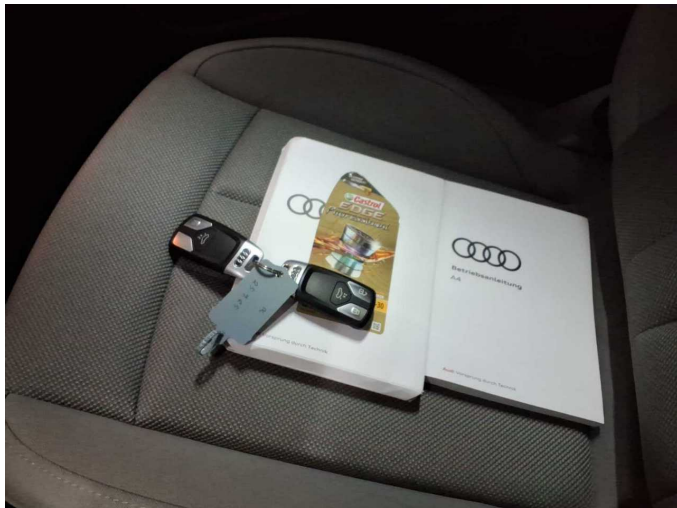


Figure 13: Documents



Figure 14: Navigation

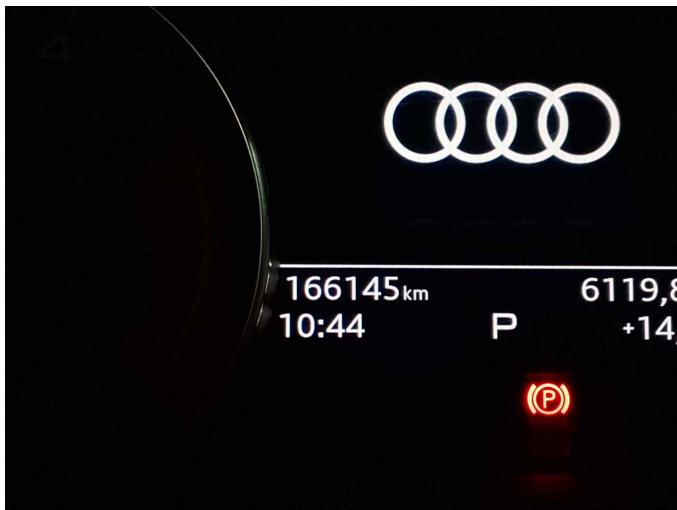


Figure 15: Misc.

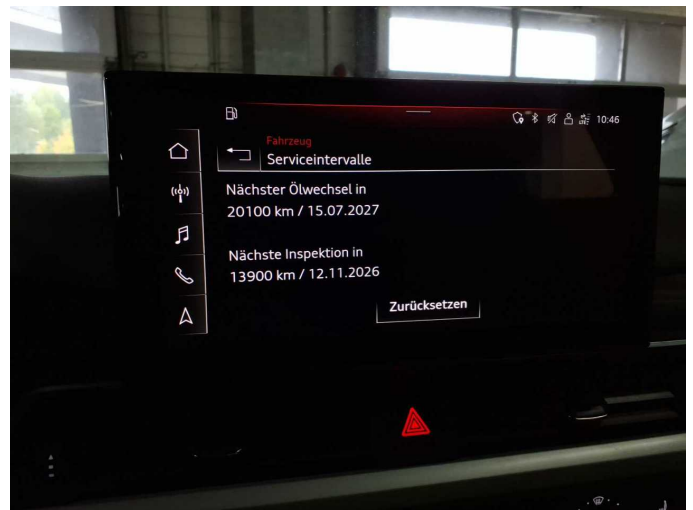


Figure 16: Misc.

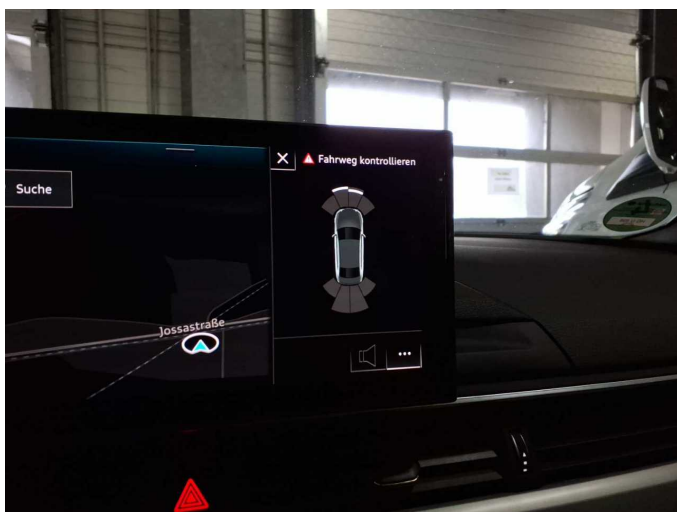


Figure 17: Misc.



Figure 18: Misc.



Figure 19: Misc.



Figure 20: Misc.



Figure 21: Misc.



Figure 22: Misc.



Figure 23: Misc.



Figure 24: Misc.



Figure 25: Misc.



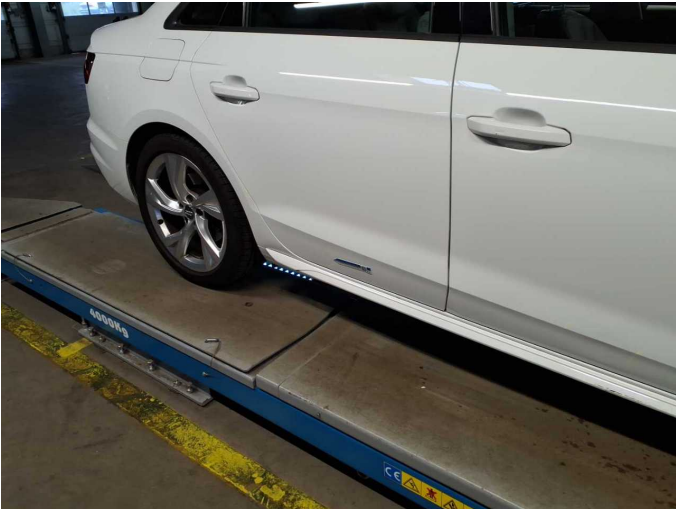
Figure 26: Misc.



Figure 27: Misc.



Damage 3: Equipment: Tirefit filler - Expired - Replace



Damage 4: Door - rear right side: Door - dent(s) - Smooth repair work



Damage 4: Door - rear right side: Door - dent(s) - Smooth repair work



Damage 5: Door - front left side: Door - dent(s) - Smooth repair work



Damage 5: Door - front left side: Door - dent(s) - Smooth repair work



Damage 6: Wheel / tyres: Tyre - front right side (Flanke, nicht fahrbereit) - Damaged - Replace



Damage 6: Wheel / tyres: Tyre - front right side (Flanke, nicht fahrbereit) - Damaged - Replace



Damage 7: Door - front right side: Door - Deformed - Repair and paint



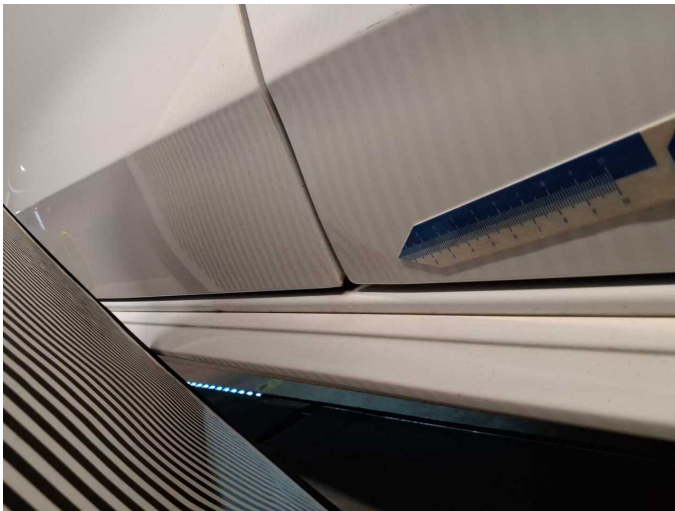
Damage 7: Door - front right side: Door - Deformed - Repair and paint



Damage 7: Door - front right side: Door - Deformed - Repair and paint



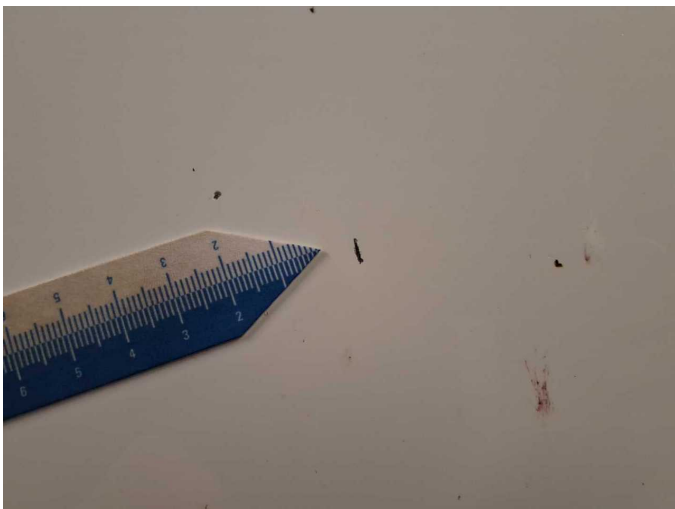
Damage 7: Door - front right side: Door - Deformed - Repair and paint



Damage 7: Door - front right side: Door - Deformed - Repair and paint



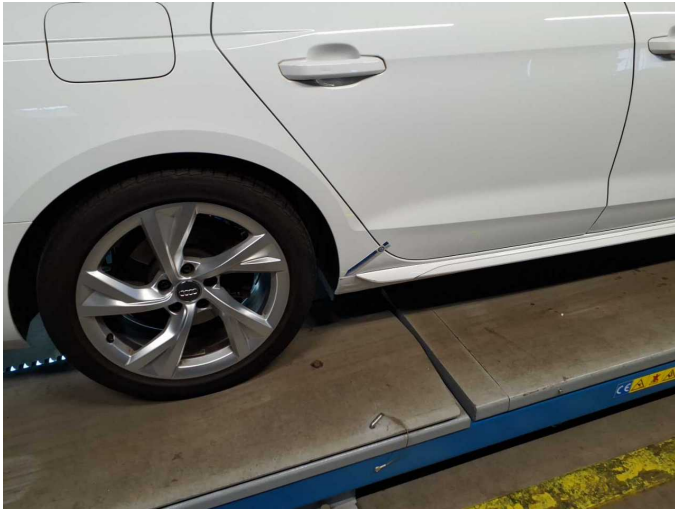
Damage 8: Bonnet: Bonnet - Dent / paintcoat damage - Repair and paint



Damage 8: Bonnet: Bonnet - Dent / paintcoat damage - Repair and paint



Damage 8: Bonnet: Bonnet - Dent / paintcoat damage - Repair and paint



Damage 9: Sill - right side: Sill (und Leiste) - Dent / paintcoat damage - repair according to calculation



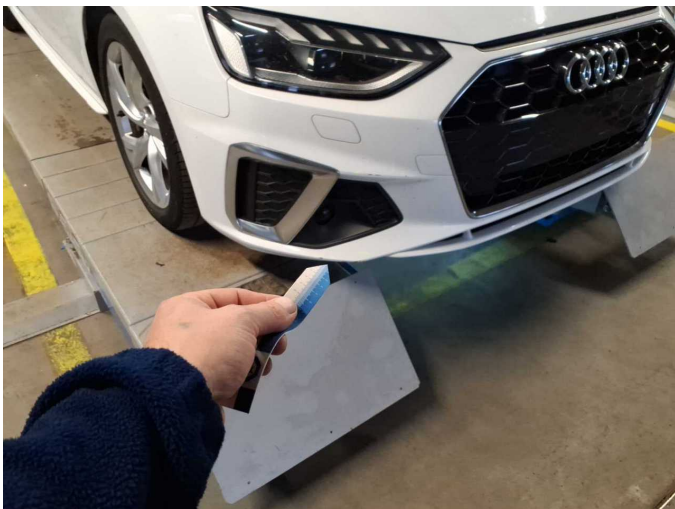
Damage 9: Sill - right side: Sill (und Leiste) - Dent / paintcoat damage - repair according to calculation



Damage 10: Front bumper: Front bumper - Scratched - Paint



Damage 10: Front bumper: Front bumper - Scratched - Paint



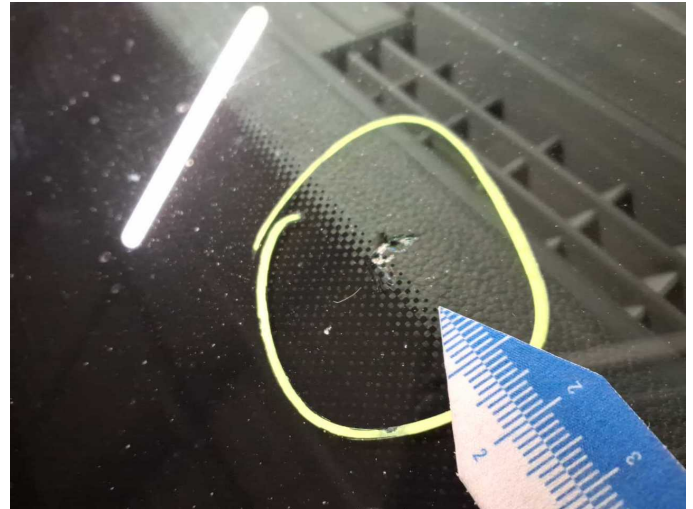
Damage 10: Front bumper: Front bumper - Scratched - Paint



Damage 10: Front bumper: Front bumper - Scratched - Paint



Damage 11: Vehicle glazing: Windscreen (Rissbildung) - Stone chips - repair according to calculation



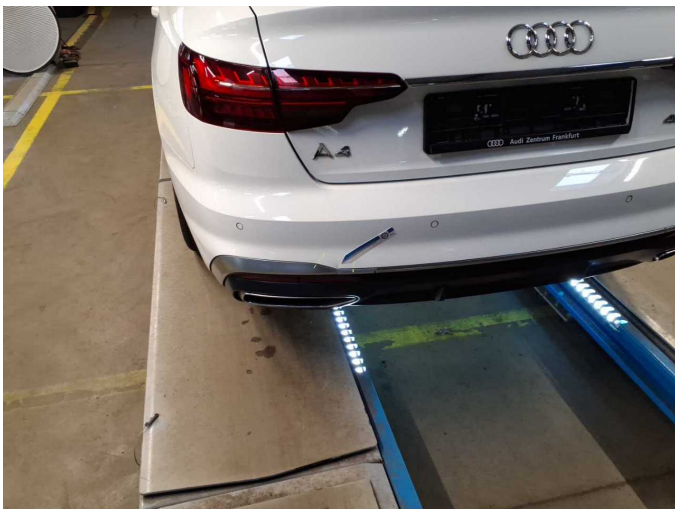
Damage 11: Vehicle glazing: Windscreen (Rissbildung) - Stone chips - repair according to calculation



Damage 12: Rear bumper: Rear bumper (mit Spoiler, Verkratzt) - Broken / torn - repair according to calculation



Damage 12: Rear bumper: Rear bumper (mit Spoiler, Verkratzt) - Broken / torn - repair according to calculation



Damage 12: Rear bumper: Rear bumper (mit Spoiler, Verkratzt) - Broken / torn - repair according to calculation



Damage 12: Rear bumper: Rear bumper (mit Spoiler, Verkratzt) - Broken / torn - repair according to calculation



Damage 12: Rear bumper: Rear bumper (mit Spoiler, Verkratzt) - Broken / torn - repair according to calculation



Damage 12: Rear bumper: Rear bumper (mit Spoiler, Verkratzt) - Broken / torn - repair according to calculation