



Expertise

Protocol number: 41346919
Order No. / Reference: 24992495
Inspection date: 28 Aug 2025

Manufacturer: Audi	Model: A4 Avant 35 TDI S tronic
VIN: WAUZZZF49NA050065	



Vehicle details	
Manufacturer / Type / Model / Equipment	
Audi A4 Avant 35 TDI S tronic	
Vehicle Identification number	WAUZZZF49NA050065
Mileage (Read)	116,040 km
First registration	15 Aug 2022
Number of holders	1
Power / Engine displacement	120 kw / 1,968 ccm
Fuel type / Cylinder	Hybrid Diesel / E / 4
Gearbox / Number of gears	Automatic / 7
Type of drive	Front drive
Type of vehicle	Station wagon
Colour / colour code	Gletscherweiss Metallic
Doors / Seats	5 / 5
Upholstery type	Cloth
Colour of upholstery	Anthracite-Black



Vehicle details

Maintenance booklet / proof	Non-existent	Next maintenance in	21,800 km
Key is / should be	2 / 2	FZG documents	ZB#2 (B) was available (copy), ZB#1 (S) was not available
		Letter No.	GJ272672
Previous damage / Accident	Detectable	Repainting	Detectable
Inspection conditions	sufficient	Lifting equipment / pit	yes
Test drive	Not performed	Engine function test	Performed
Manufacturer key number/ type code number	0588 / BPK 00847		
Emission standard	EURO6;WLTP;AP;PI/CI; M, N1 I	Fine dust sticker	
Permitted total weight	2,165 kg	Empty weight	

Tyres

Mounted tyres

#	Tyre size	Type of tyre	Manufacturer	Tread depth
1)	205/60 R16 92H	Winter tyres on Light alloy	Continental	3mm / 3mm
2)	205/60 R16 92H	Winter tyres on Light alloy	Continental	5mm / 5mm

Additional tyres

#	Tyre size	Type of tyre	Manufacturer	Tread depth
1)	205/55 R16 94V	Winter tyres (Without wheel rim)	Yokohama	4mm / 4mm
2)	205/55 R16 94V	Winter tyres (Without wheel rim)	Yokohama	5mm / 5mm

Replacement

Typ	Tyre size	Type of tyre	Manufacturer	Tread depth
Tirefit		Expiration date 05/2026		

Legend: Tread depth information for tires on the left is in the first place, for tires on the right is in the second place on the axle in the direction of travel

Equipment

Standard equipment

- | | |
|---|--|
| <ul style="list-style-type: none"> • AdBlue tank (12 liters) • Airbag: Front side airbags and head airbag system • Anti-lock braking system (ABS) • Audi connect emergency call & service with Audi connect Remote & Control • Exterior mirror housings in body color • Brake light, third raised • Roof rails black • Diesel particulate filter (DPF) • Door sills with aluminum inserts at the front • Electronic differential lock (EDS) • Driver Information System • Electric window lifter • Radio key, without SafeLock • Cruise control with speed limiter • Rear window wiper • Interior lighting • Parental controls • Automatic air conditioning • trunk floor mat • loading floor • LED rear lights • Steering column, manually height and axially adjustable • Light/rain sensor • Front center armrest • Wheel: light alloy wheels, 5-arm • Radio: MMI Radio plus • Radio accessories: Digital radio reception (DAB) • Tire repair kit • Power steering, electromechanical • Seats: Standard seats in the front • Seats: Front seats manually adjustable • Bandage material with warning triangle • Electronic immobilizer • Central locking "Keyless-Go" without safe security | <ul style="list-style-type: none"> • Airbag for driver and front passenger • Accent surfaces matt black • Traction control (ASR) • Audi pre sense city • Exterior mirrors electrically adjustable and heated • Vehicle tool kit • Fabric headliner • Decorative inlays diamond lacquer silver grey • tachometer • Electromechanical parking brake • Electronic Stabilization Control (ESC) • Chassis: Standard chassis • Window sill strips in black (rubber) • Floor mats front and rear • Transmission: S tronic 7-speed • Top speed limited to 210 km/h • Dimmable interior mirror • ISOFIX and Top Tether child seat attachment for the outer rear seats • Headrests (5) • Load compartment cover manually • Steering wheel: Leather steering wheel in 3-spoke design with multifunction • Mild hybrid • Non-smoking version • Wheel: Rolling resistance optimized tires, speed limited • Radio accessories: 8 speakers (passive) front and rear • Tire pressure monitoring display • Headlights with LED technology • Seat covers in fabric index • Seats: Folding rear seat backrest • Start-stop system • Glazing: Windscreen with thermal insulation and acoustic glazing |
|---|--|

Extra equipment

- | | |
|---|--|
| <ul style="list-style-type: none"> • AdBlue tank (24 liters) (larger tank for AdBlue solution to reduce nitrogen oxides in the exhaust gas using the SCR system) • Audi active lane assist including camera-based traffic sign recognition and high beam assist (lane keeping assist, conveniently supports the driver in keeping in lane within system limits (operating range from approximately 65 to a maximum of 250 km/h). If the system is activated and ready and the driver has not activated the turn signal, Audi active lane assist helps guide the vehicle within recognized lane markings by gently correcting the steering.) | <ul style="list-style-type: none"> • Mechanically pivoting trailer hitch (can be conveniently locked and unlocked using a release mechanism. - Mechanically pivoting ball head with electric release, controlled by a button in the luggage compartment - Ball bar and head made of forged steel - Trailer stabilization via the Electronic Stability Control (ESC) - Pivoting system socket allows continuous operation of electrical devices in the trailer or caravan, even while driving) |
|---|--|



- Audi pre sense basic (initiates preventive protective measures for the occupants within the system's limits by networking and synchronizing various vehicle systems. In unstable driving conditions, the front seat belts are electrically tensioned. The windows close as needed. The hazard warning lights are activated to warn following traffic.)
- Electrically adjustable, heated, and foldable exterior mirrors, automatically dimming on both sides (including automatic curbside mirror function for the passenger side mirror with integrated LED indicators, including heated windshield washer nozzles. The automatic curbside mirror folds down when reverse gear is engaged, giving the driver a better view of the curb)
- Headlining in black fabric
- High Beam Assistant (within the system's limits, it automatically detects the headlights of oncoming traffic, the taillights of other road users, and light sources in built-up areas. Depending on the traffic situation, the high beam is automatically switched on or off. The system thus improves the driver's visibility and increases comfort.)
- Luggage compartment lid, electrically opening and closing (The luggage compartment lid can be opened electrically by pressing the button on the vehicle key, in the driver's door, or the soft-touch button on the luggage compartment lid handle. Closing the luggage compartment lid is just as easy and convenient as opening it: simply press the button on the inside of the luggage compartment lid, the button in the driver's door, or the button on the vehicle key. A closing aid makes manual closing easier when necessary.)
- Storage and luggage compartment package (flexible transport of items and comfort while traveling consisting of: - storage net on the back of the front seat backrests - cup holder in the rear center armrest - storage compartment on the driver's side - lockable glove compartment in the luggage compartment: - luggage compartment net - net recess left and right - tensioning strap right)
- Business package (MMI navigation plus with MMI touch (including driver information system with color display) - Audi phone box - 3-spoke leather steering wheel with multifunction plus - Heated front seats - Frameless, automatically dimming interior mirror - Electrically adjustable, heated, and folding exterior mirrors with automatic dimming on both sides - Rear parking aid - High beam assistant - Manual sunblind for the rear door windows)
- Seat covers in fabric system (seat center panels in fabric system black or black-red - seat side bolsters, thigh support, headrests in plain black fabric)
- Front seat heating (heats seat and backrest center panels; with leather upholstery, sports seats, and S-sport seats, also seat side bolsters - individually adjustable in multiple stages for driver and passenger side using the climate control panel)
- Glazing: Acoustic glazing for front door windows (Front door windows with acoustic glazing provide improved exterior noise insulation.)
- Audi connect Navigation & Infotainment (Navigation with Google satellite maps - Online search for navigation destinations - Online voice input - Online traffic information - Online traffic information plus - Online points of interest - On-street parking - Hazard information - Online traffic sign information - myAudi Navigation - Highly detailed 3D city display - Amazon Alexa integration - Online media streaming - Online radio - Hybrid radio - Weather information - Online news - Wi-Fi hotspot - User profiles)
- Audi virtual cockpit plus (Innovative, fully digital instrument cluster with a 12.3-inch display, full HD resolution with additional graphic display options: Classic, Sport, and Dynamic design. For flexible and needs-based display of the respective information according to the driver's needs: speed/rpm, map display, Audi connect services, radio/media information, etc. - VIEW button on the multifunction steering wheel)
- Parking Aid Plus (Acoustic and visual parking aids at the front and rear assist with parking and maneuvering. With selective, visual display of the distance to detected objects on the MMI display, depending on the current steering angle and direction of travel. The virtual lane indicator also offers lateral guidance lines that are calculated in advance based on the currently selected steering angle. Measurement is performed by ultrasonic sensors discreetly integrated into the bumpers.)
- Hold Assist (holds the vehicle for an unlimited period of time after stopping on typical uphill and downhill gradients. The system is activated at the touch of a button and allows the driver to pull away comfortably.)
- Fuel tank with increased filling volume (54 l)
- Paint finish: metallic
- Steering wheel: Leather-wrapped 3-spoke steering wheel with multifunction plus (The steering wheel impresses with its high-quality appearance and aluminum trim and fits comfortably in the hand. The height and reach of the steering wheel are manually adjustable. For convenient operation of the extensive standard and optional infotainment features, the steering wheel is equipped with 12 multifunction buttons. It also features shift paddles for manual gear changes with automatic transmissions.)
- Child Safety Package (ISOFIX child seat attachment for the front passenger seat with passenger airbag deactivation switch and electric rear child safety lock. The recommended child seats from Audi Genuine Accessories are available from your Audi partner.)
- Wheel: Deselect rolling resistance-optimized tires, removal of speed limit (16 inches) (tires 205/60 R 16 92W)
- Wheel: Audi new car tire warranty (36 months from vehicle handover to the first customer)
- Seats: 4-way lumbar support (electrically adjustable, horizontally and vertically)



- Glazing: Wirelessly heated climate comfort/acoustic windshield (without wires that obstruct visibility – ensures fog-free operation – assists with defrosting the windshield – with heated wiper blade storage – selectable via the defrost button in the climate control panel – additional benefit: The infrared-reflective properties of the windshield prevent the interior from heating up in direct sunlight. This significantly reduces the energy consumption of the air conditioning system.)
- Front sports seats (with manual adjustment of seat height, seat fore/aft position, seat angle, backrest angle, headrest and belt height; with pronounced seat side bolsters for better lateral support in curves, extendable thigh support)
- Telephone: Audi smartphone interface in conjunction with MMI navigation plus with MMI touch (The Audi smartphone interface (Android Auto and Apple CarPlay) connects your smartphone to your Audi and seamlessly displays your smartphone content directly on the MMI display. Navigation, telephony, music, and selected third-party apps can be conveniently controlled via the MMI touch display and voice control. The connection can be established either via a suitable USB cable or wirelessly.)
- Glazing: Sun protection glazing tinted for acoustic glazing (rear window, rear door and side windows tinted)

Brief expert findings

Documents submitted	At the time of the inspection, the registration certificate Part 2 (letter) was available, but the registration certificate Part 1 (certificate) was not. (Copy)
VIN comparison	The vehicle identification number (VIN) was read from the vehicle and its conformity with the submitted documents was verified during the inspection by the undersigned.
Inspection	The inspection conditions were sufficient for the assessment of the vehicle. Lifting equipment and a pit were available for examining the vehicle.
Test drive	No test drive/maneuvering was carried out during the inspection of the vehicle.
Engine function test	An engine test run was performed.

Value reducing factors

No.	Component group	Description
1	Misc.	Inspection / maintenance (Nicht Vorhanden) - No evidence - No deduction
2	Door - rear right side	Door - dent(s) - Smooth repair work
3	Door - front right side	Door - dent(s) - Smart repair
4	Wheel / tyres	Tyre - front - Does not meet the leasing specifications - Replace
5	Rear bumper	Rear bumper - Scratch(es) - Paint
6	Sill - right side	Sill - Deformed - Repair and paint

Wear and tear

No.	Component group	Description
1	Bonnet	Bonnet - Stone chips - No deduction
2	2nd wheel set	2 tyres (Nicht Bestandteil der Ausstattung) - Does not meet the leasing specifications - No deduction

The vehicle shows signs of wear commensurate with its age and use.

Missing parts

Description

Documents - Service book (Digitaler Nachweis)



Previous damages

No. Previous damage

Extent of
damage (Net)

1 Side - left, Professionally repaired, Invoice of repair done Non-existent

Repainting

No. Repainting

1 Side panel - rear left side

Paint coat thickness measurement

Side panel - rear left side 534 μm |

Order/Scope of order

The order was placed to prepare a sales report for the vehicle described. This includes the following:

- Description of core relevant information about the vehicle
- Documentation of equipment features
(*Delivery by third-party service providers*)
- Documentation of damage, defects, missing parts
- Documentation of previous damage, unrepaired previous damage, repainting
- a brief visual or functional inspection of the equipment details if possible.
(*Functional tests of driver assistance systems are not included in the scope of services!*)
- a photo documentation of the vehicle

Basis for the order

This product is based on the Alphabet Fuhrpark GmbH guidelines for vehicle returns and valuations. The expert makes the explicit findings in each individual case objectively within the framework of the specified standards based on his or her own expertise.

The vehicle inspection takes place in a disassembled state.

Damage or defects that can only be detected during disassembly/diagnosis work or through advanced knowledge remain within the scope of the prognosis risk. An extended risk exists for concealed defects caused by fraudulent deception and not identifiable by the expert.

Damage or defects resulting from normal use or wear and tear of the vehicle will be accepted according to the applicable standard.

There was no explicit identification or monetary consideration of the expected features within the product.

Features which in their nature and severity slightly exceed normal use but do not constitute unacceptable damage will be documented and identified under signs of use if necessary.

Damage or defects which, according to the underlying standard, can no longer be attributed to normal use or wear and tear are listed in the product under "Depreciating Factors".

Depending on the product specification, a monetary ID can be provided. If this takes place, the costs can be 100% d or pro rata depending on the vehicle's age and mileage.

Previous damages

Professionally repaired previous damages were found at the vehicle.



Figure 1: Diagonal front (left)



Figure 2: Diagonal front (right)



Figure 3: Diagonal rear (left)



Figure 4: Diagonal rear (right)



Figure 5: Interior - front



Figure 6: Interior - rear



Figure 7: Instrument cluster



Figure 8: Instrument panel



Figure 9: interior 360° view



Figure 10: Cargo area

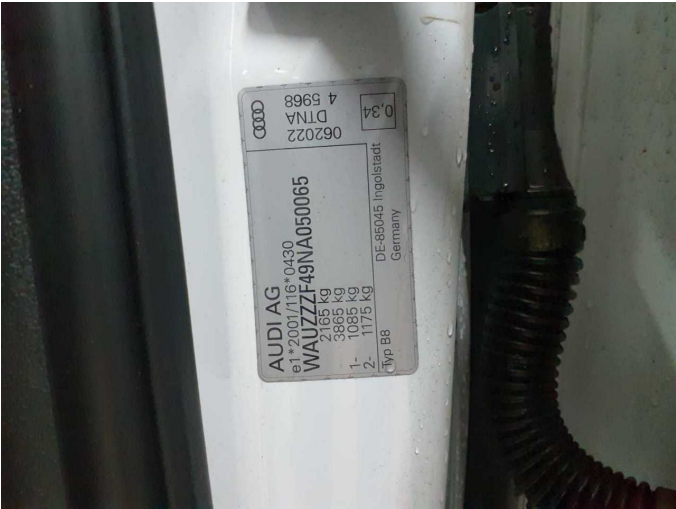


Figure 11: VIN



Figure 12: Mounted tyres



Figure 13: Documents



Figure 14: Documents



Figure 15: Additional tyres

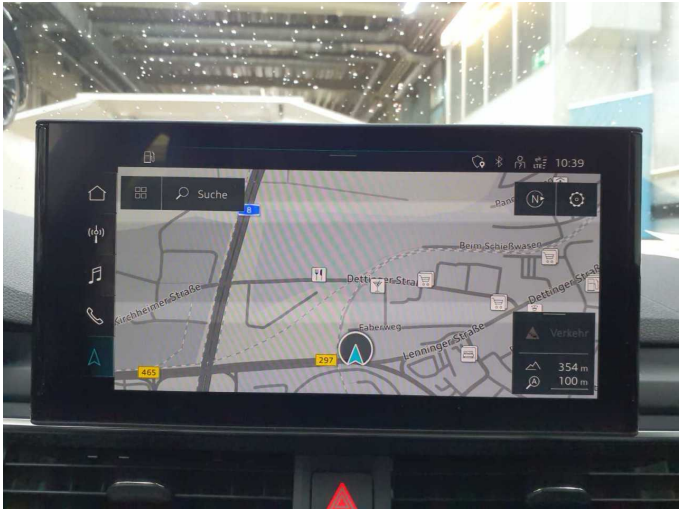


Figure 16: Navigation



Figure 17: Misc.



Figure 18: Misc.



Figure 19: Misc.



Figure 20: Misc.



Figure 21: Misc.



Figure 22: Misc.

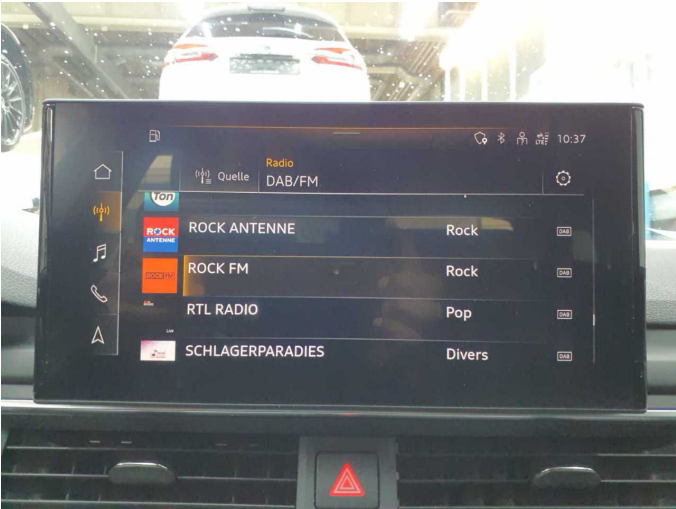


Figure 23: Misc.

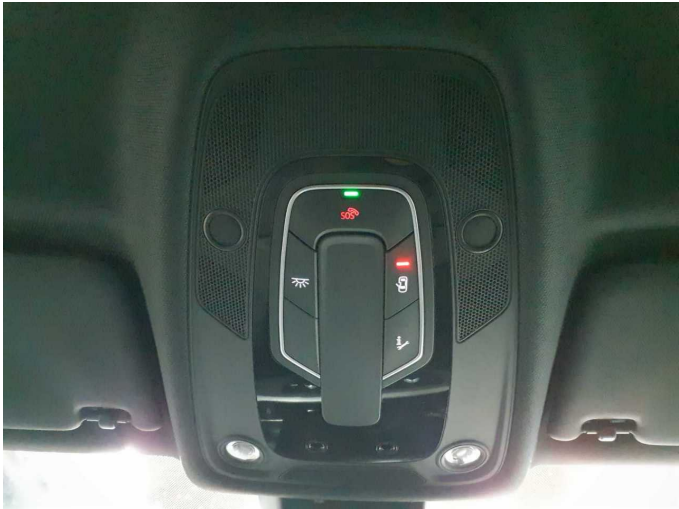


Figure 24: Misc.



Figure 25: Misc.



Figure 26: Misc.

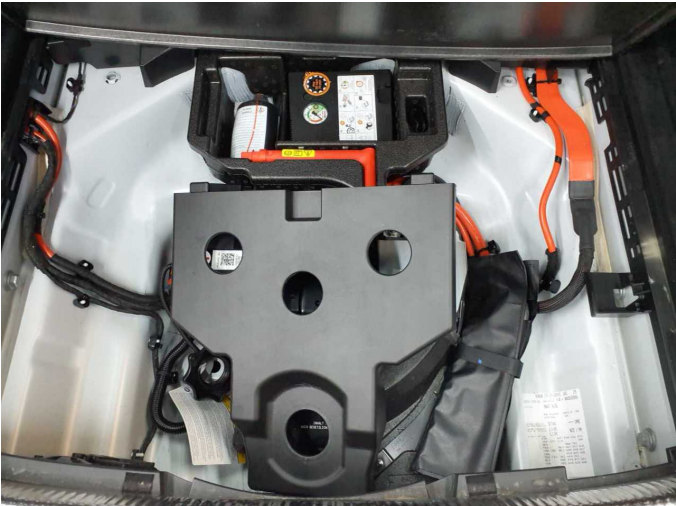


Figure 27: Misc.

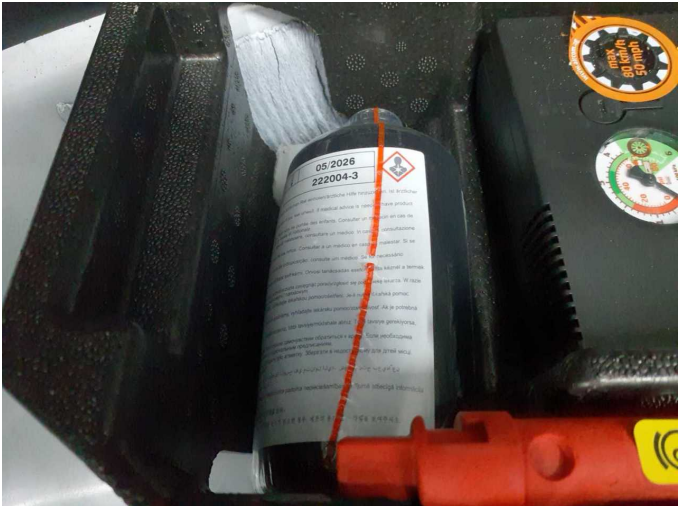


Figure 28: Misc.



Figure 29: Misc.



Figure 30: Misc.

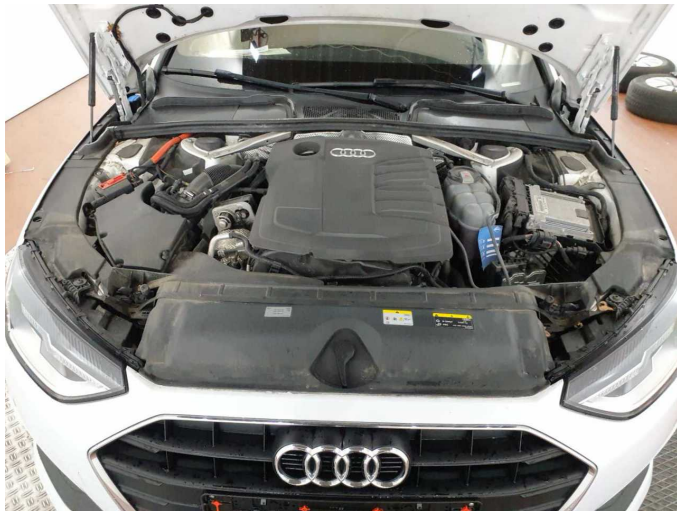


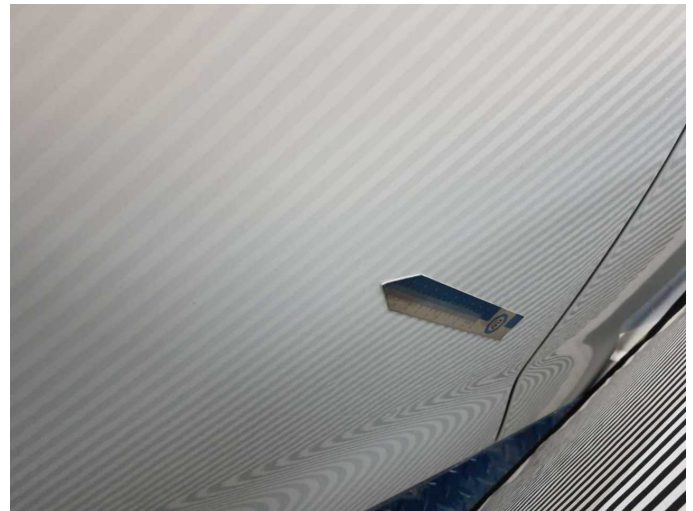
Figure 31: Misc.



Figure 32: Misc.



Damage 2: Door - rear right side: Door - dent(s) - Smooth repair work



Damage 2: Door - rear right side: Door - dent(s) - Smooth repair work



Damage 3: Door - front right side: Door - dent(s) - Smart repair



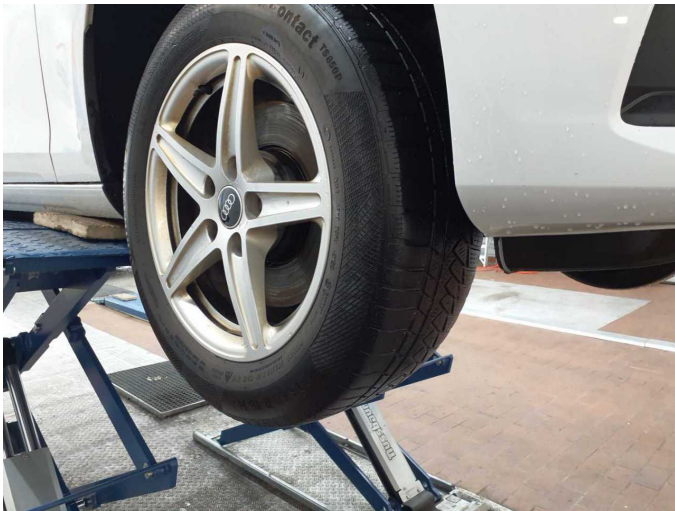
Damage 3: Door - front right side: Door - dent(s) - Smart repair



Damage 4: Wheel / tyres: Tyre - front - Does not meet the leasing specifications - Replace



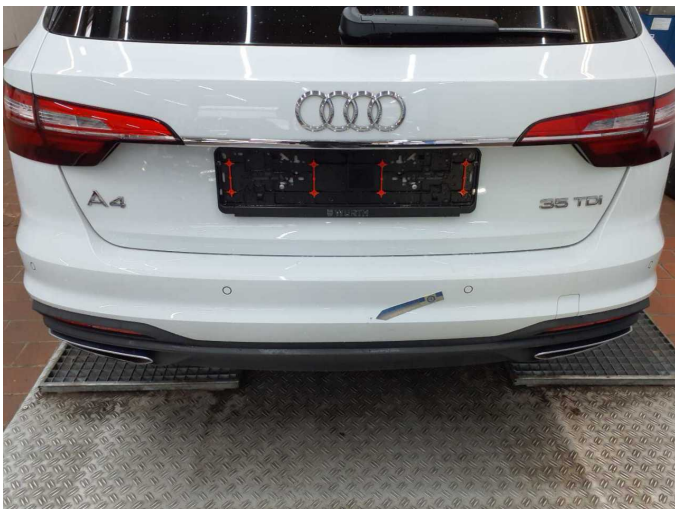
Damage 4: Wheel / tyres: Tyre - front - Does not meet the leasing specifications - Replace



Damage 4: Wheel / tyres: Tyre - front - Does not meet the leasing specifications - Replace



Damage 4: Wheel / tyres: Tyre - front - Does not meet the leasing specifications - Replace



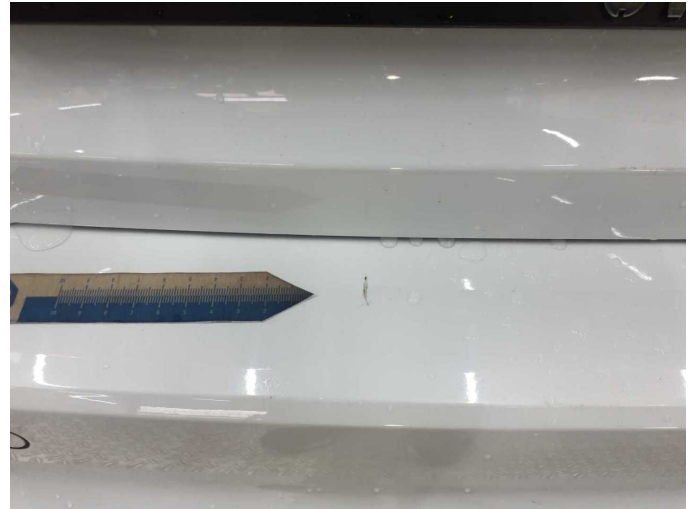
Damage 5: Rear bumper: Rear bumper - Scratch(es) - Paint



Damage 5: Rear bumper: Rear bumper - Scratch(es) - Paint



Damage 5: Rear bumper: Rear bumper - Scratch(es) - Paint



Damage 5: Rear bumper: Rear bumper - Scratch(es) - Paint



Damage 5: Rear bumper: Rear bumper - Scratch(es) - Paint



Damage 6: Sill - right side: Sill - Deformed - Repair and paint



Damage 6: Sill - right side: Sill - Deformed - Repair and paint



Damage 6: Sill - right side: Sill - Deformed - Repair and paint



Wear and tear 1: Bonnet: Bonnet - Stone chips - No deduction



Wear and tear 1: Bonnet: Bonnet - Stone chips - No deduction



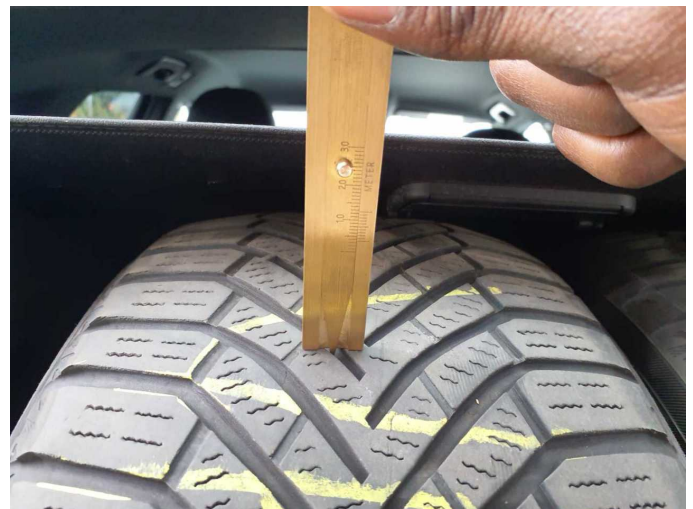
Wear and tear 1: Bonnet: Bonnet - Stone chips - No deduction



Wear and tear 2: 2nd wheel set: 2 tyres (Nicht Bestandteil der Ausstattung) - Does not meet the leasing specifications - No deduction



Wear and tear 2: 2nd wheel set: 2 tyres (Nicht Bestandteil der Ausstattung) - Does not meet the leasing specifications - No deduction



Wear and tear 2: 2nd wheel set: 2 tyres (Nicht Bestandteil der Ausstattung) - Does not meet the leasing specifications - No deduction



Repainting 1: Side panel - rear left side



Repainting 1: Side panel - rear left side