



# AUDI A4

## A4 Avant 40 TDI quattro S tronic

VIN NO WAUZZZF47NA047987  
Registration Number 47NA047987



MOT Date	Number of Owners	Number of Keys	Odometer Reading
2025-08-01	1	2	104608 km
Last Service	Last Service Mileage	First Registration Date	Country First Registered
2022-08-26	1	2022-08-25	Germany

### Inspection Report Summary

Customer	BCA Online	Report Number	P20250905112255
Inspection Date / Place	2025-09-05 / BCA Neuss	Cosmetic Grade	4

### Vehicle Summary

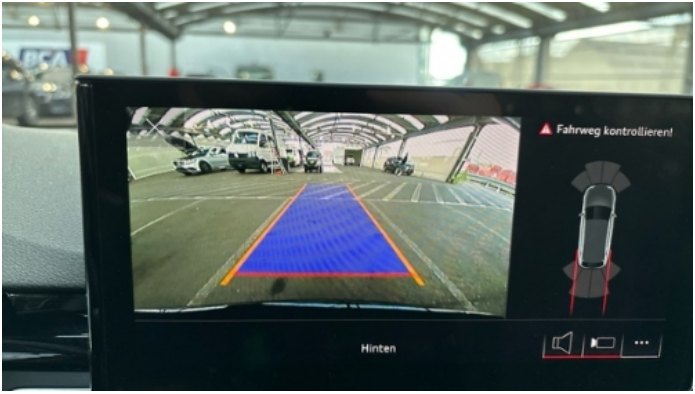
Vehicle Condition	Runner	VAT Type	Qualifying
Fuel Type	Diesel	Road Worthy	Yes
Colour	Black	Engine Size (cc)	1968
Engine Size	2.0	No of Doors	5
Body Type	Stationwagon / Estate	Drive Train	All-Wheel-Drive permanent
Seat Colour		No of Seats	5
Seat Covering Name	anthrazit	Seat Covering	Cloth/Synthetic Leather
Charging Cables		WLTP CO2 Emissions	
Gearbox Type	Automatic		

### Vehicle History & Documents

Service Book Available	Computer Print Out Available	Next Service Mileage	km
Previous Usage		Imported	No
Manufacturer Warrenty			











Equipment

Tinted Glass	Alloys wheels	Bluetooth telephone interface	Diesel particulate filter
Front parking sensors	Remote adjusting wing mirrors	Reversing Camera	Satellite navigation
Electrically folding wing mirrors	Leather steering wheel	Radio	Airbag Status
Anti-lock braking	Cruise control	Digital Radio	Heated wing mirrors
Remote central locking	Roof rails	Stability control	Electrictailgate
LED Headlamps	Rear parking sensors		

Equipment Details

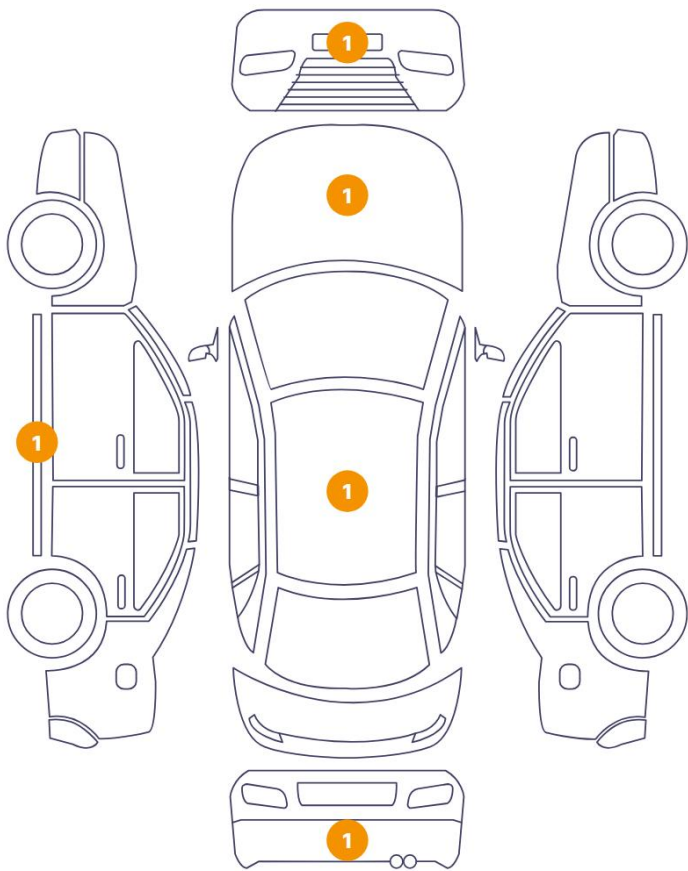
Air Conditioning	Three Zone Climate Control	Alloy Wheel Size	18
Seat Heating	Front		

Wheels & Tyres

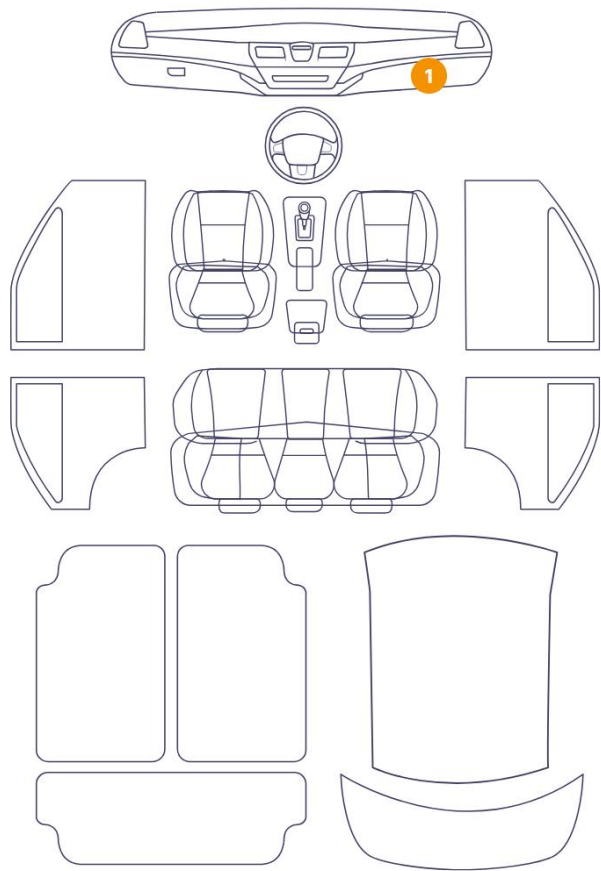
Right Front Tyre Depth	5	Left Front Tyre Depth	5
Right Rear Tyre Depth	5	Left Rear Tyre Depth	5

Cosmetic Damage

5 Schäden

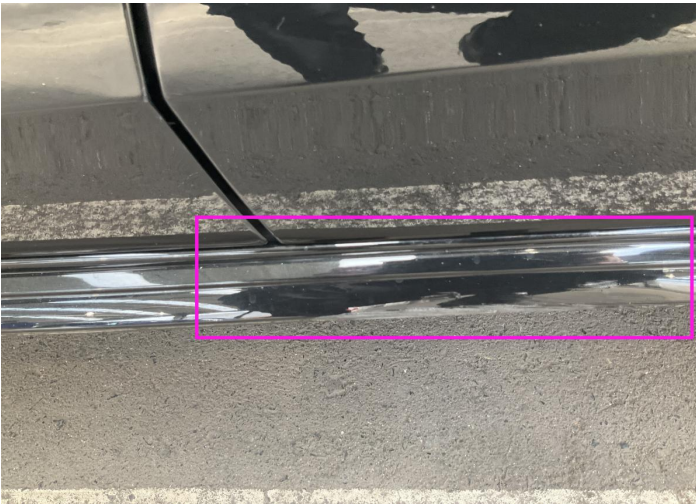


1 Schäden



Component		Damage	Comments
1	Rocker Panel / Center Left	Bodywork / Breakage	
2	Bumper / Back	Paint / Scratch / Scuff	
3	Roof	Paint / Scratch / Scuff	
4	Bumper / Front	Paint / Scratch / Scuff	
5	Hood	Paint / Scratch / Scuff	
6	Center Console	Interior / Scratched	





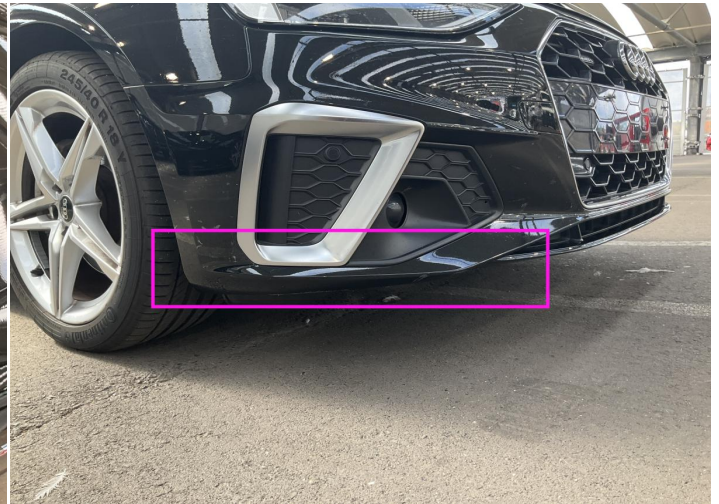
1. Rocker Panel / Center Left  
Bodywork / Breakage -



2. Bumper / Back  
Paint / Scratch / Scuff -



3. Roof  
Paint / Scratch / Scuff -



4. Bumper / Front  
Paint / Scratch / Scuff -



5. Hood  
Paint / Scratch / Scuff -

## Mechanical Condition

### Control Lights

Display Defect	✓	ABS Warning Light	✓
ESP Fault/Traction Control Malfunction Light	✓	Diesel Particulate Filter Light	✓
Airbag Warning Light	✓	Oil Pressure Warning Light	✓
Brake Warning Light	✓	Power Steering Warning Light	✓
Alternator / Battery	✓	All - wheel Drive	✓
No Dashboard Lights	✓	Tire Pressure Monitoring System	✓

### Equipments Test

Main & Spare Keys Functioning	!	Electric Windows	✓
Navigation System	✓	Parking Sensors / Cameras Functioning	✓
AC / Heating System	✓		

### Engine

Engine Status / EML	✓	Engine Leak Visible	✓
Engine Starts	✓		

### Gearbox

Gear Box	✓
----------	---

### Levels

Brakes Fluid	NA	Coolant Fluid	!
--------------	----	---------------	---



Test Drive Inspection

Steering Wheel

Steering | Noise / Anomaly

Engine

Engine Noise The Gears Scratch / Skip / Abnormal Operation

Fume Quantity Power Loss

Brake

Brake System Anomaly

General

Test Driven Status

- No troubles detected, good condition or correct tests, according to vehicle age and mileage
- Damages or malfunction detected that requires repairs by the buyer
- Not applicable
- Not tested

Disclaimer

Please also note the "UserGuide condition report", which shows the scope of the vehicle description. [User Guide](#)