



AUDI A4  
A4 Avant 35 TDI S tronic

VIN NO WAUZZZF47KA093542  
Registration Number 47KA093542



MOT Date	Number of Owners	Number of Keys	Odometer Reading
-	-	1	200893 km
Last Service	Last Service Mileage	First Registration Date	Country First Registered
2024-09-13	162159	2019-07-01	-

Inspection Report Summary

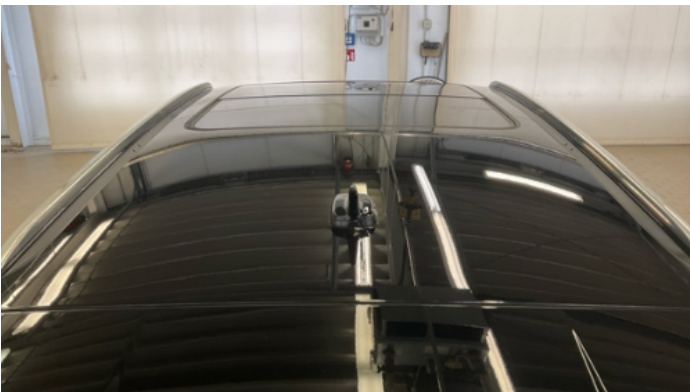
Customer	BCA Online	Report Number	P20251006125525
Inspection Date / Place	2025-10-06 / BCA Berlin	Cosmetic Grade	2

Vehicle Summary

Vehicle Condition	Runner	VAT Type	Margin
Fuel Type	Diesel	Road Worthy	Unknown
Colour	Black	Engine Size (cc)	1968
Engine Size	2.0	No of Doors	5
Body Type	Stationwagon / Estate	Drive Train	Front
Seat Colour		No of Seats	5
Seat Covering Name	Grau	Seat Covering	Cloth
Charging Cables		NEDC CO2 Rating (q/km)	114
Gearbox Type	Automatic		

Vehicle History & Documents

Service Book Available	Present	Next Service Mileage	km
Previous Usage		Imported	No
Manufacturer Warrenty			









## Equipment

Tinted Glass	Alloys wheels	Cruise control	Heated wing mirrors
Remote central locking	Satellite navigation	Sunroof	LED Headlamps
Rear parking sensors	Airbag Status	Anti-lock braking	Front parking sensors
Remote adjusting wing mirrors	Roof rails	Stability control	Electric tailgate
Radio			

## Equipment Details

Air Conditioning	Climate Control	Alloy Wheel Size	18
Extra Wheel / Tyre Set	Winter Tyres - Steel	Seat Heating	Front
Sunroof Type	Opening Panoramic		

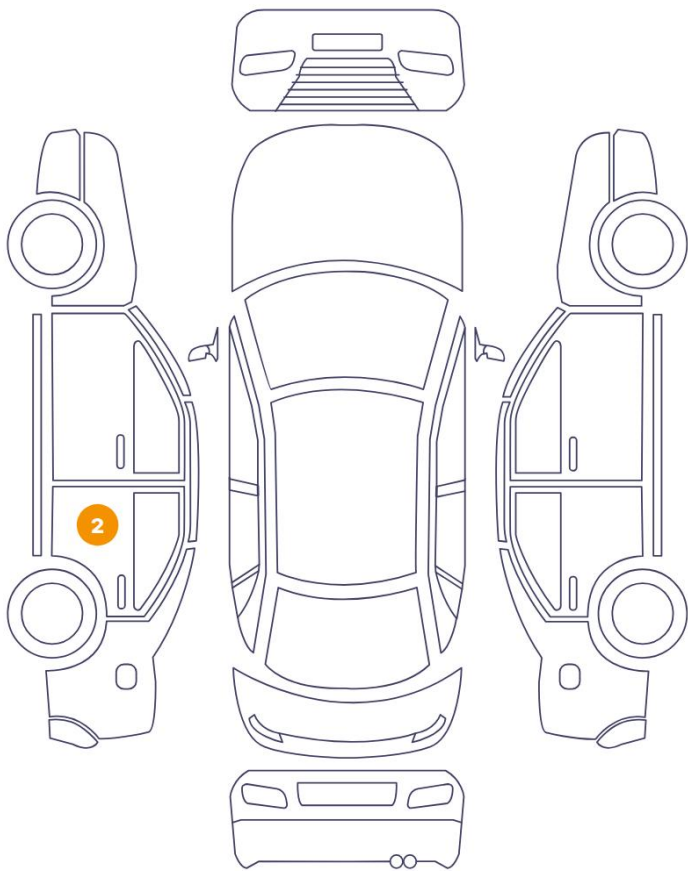
## Wheels & Tyres

Extra Wheel - 1 Tyre Depth	3	Extra Wheel - 2 Tyre Depth	3
Extra Wheel - 3 Tyre Depth	2	Extra Wheel - 4 Tyre Depth	2
Right Front Tyre Depth	4	Left Front Tyre Depth	4
Right Rear Tyre Depth	5	Left Rear Tyre Depth	5

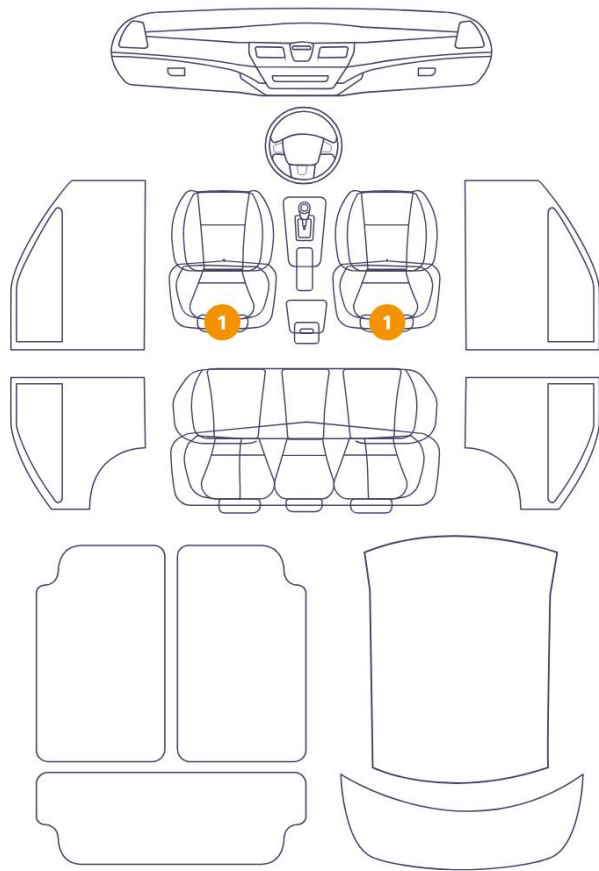


Cosmetic Damage

2 Schäden



2 Schäden



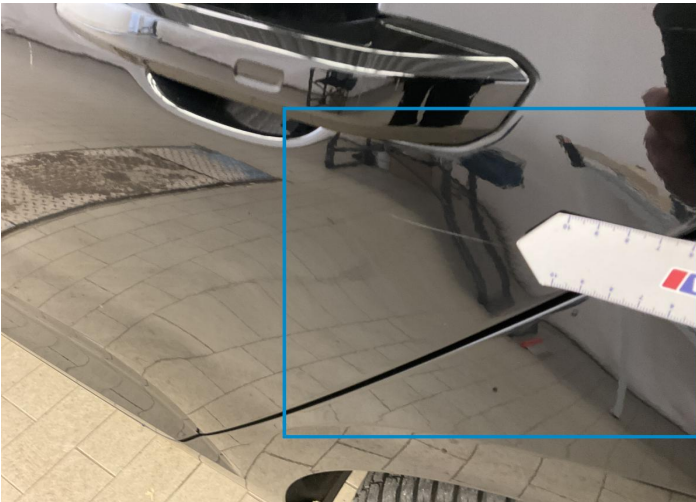
Component		Damage	Comments
1	Seat / Front Left	Interior / Dirty	
2	Seat / Front Right	Interior / Dirty	
3	Door / Back Left	Paint / Scratch / Scuff	
4	Door / Back Left	Paint / Poor Previous Repair	



1. Seat / Front Left  
Interior / Dirty -



2. Seat / Front Right  
Interior / Dirty -



3. Door / Back Left  
Paint / Scratch / Scuff -



4. Door / Back Left  
Paint / Poor Previous Repair -

## Mechanical Condition

### Control Lights

ABS Warning Light	✓	Airbag Warning Light	✓
Brake Warning Light	✓	Alternator / Battery	✓
No Dashboard Lights	✓	ESP Fault/Traction Control Malfunction Light	✓
Oil Pressure Warning Light	✓	Power Steering Warning Light	✓
Tire Pressure Monitoring System	✓		

### Equipments Test

Main & Spare Keys Functioning	✓	Electric Windows	✓
Navigation System	✓	Audio Equipment	✓
Parking Sensors / Cameras Functioning	✓	AC / Heating System	✓
Other Equipments	✓		

### Engine

Engine Status / EML	✓	Engine Leak Visible	✓
Engine Starts	✓		

### Levels

Brakes Fluid	✓	Coolant Fluid	✓
--------------	---	---------------	---



## Test Drive Inspection

Brake			
Brake System Anomaly	✓		
Steering Wheel			
Steering   Noise / Anomaly	✓		
Engine			
Engine Noise	✓	The Gears Scratch / Skip / Abnormal Operation	✓
Fume Quantity	✓	Power Loss	✓
General			
Test Driven Status	✓		
✓ <i>No troubles detected, good condition or correct tests, according to vehicle age and mileage</i>			
! <i>Damages or malfunction detected that requires repairs by the buyer</i>			
NA <i>Not applicable</i>			
☐ <i>Not tested</i>			

## Disclaimer

Please also note the "UserGuide condition report", which shows the scope of the vehicle description.

[User Guide](#)