



AUDI A4

A4 Avant 40 TDI quattro S tronic

VIN NO WAUZZZF46MA042939
Registration Number 46MA042939



| | | | |
|--------------|----------------------|-------------------------|--------------------------|
| MOT Date | Number of Owners | Number of Keys | Odometer Reading |
| 2026-02-01 | 1 | 2 | 123216 km |
| Last Service | Last Service Mileage | First Registration Date | Country First Registered |
| 2021-02-08 | 1 | 2021-02-04 | Germany |

Inspection Report Summary

| | | | |
|-------------------------|------------------------|----------------|-----------------|
| Customer | BCA Online | Report Number | P20250904131643 |
| Inspection Date / Place | 2025-09-04 / BCA Neuss | Cosmetic Grade | 1 |

Vehicle Summary

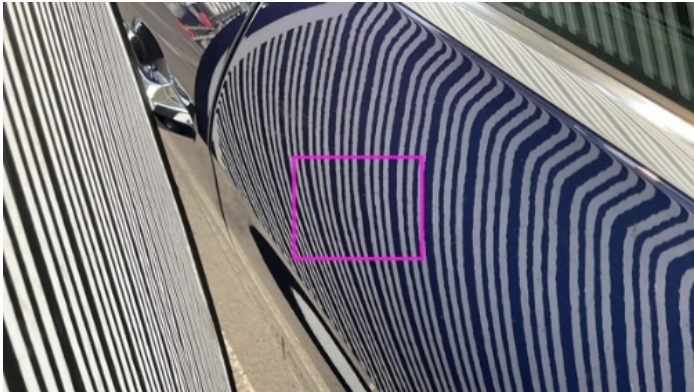
| | | | |
|--------------------|-----------------------|--------------------|---------------------------|
| Vehicle Condition | Runner | VAT Type | Qualifying |
| Fuel Type | Diesel | Road Worthy | Yes |
| Colour | Blue | Engine Size (cc) | 1968 |
| Engine Size | 2.0 | No of Doors | 5 |
| Body Type | Stationwagon / Estate | Drive Train | All-Wheel-Drive permanent |
| Seat Colour | | No of Seats | 5 |
| Seat Covering Name | schwarz | Seat Covering | Cloth |
| Charging Cables | | WLTP CO2 Emissions | |
| Gearbox Type | Automatic | | |

Vehicle History & Documents

| | | | |
|------------------------|------------------------------|----------------------|----|
| Service Book Available | Computer Print Out Available | Next Service Mileage | km |
| Previous Usage | | Imported | No |
| Manufacturer Warrenty | | | |







Equipment

| | | | |
|-----------------------------------|---------------------------|-----------------------|-------------------------------|
| Airbag Status | Anti-lock braking | Cruise control | Digital Radio |
| Heated wing mirrors | Remote central locking | Roof rails | Stability control |
| Electrically folding wing mirrors | LED Headlamps | Rear parking sensors | Alloys wheels |
| Bluetooth telephone interface | Diesel particulate filter | Front parking sensors | Remote adjusting wing mirrors |
| Reversing Camera | Satellite navigation | Sunroof | Leather steering wheel |

Radio

Equipment Details

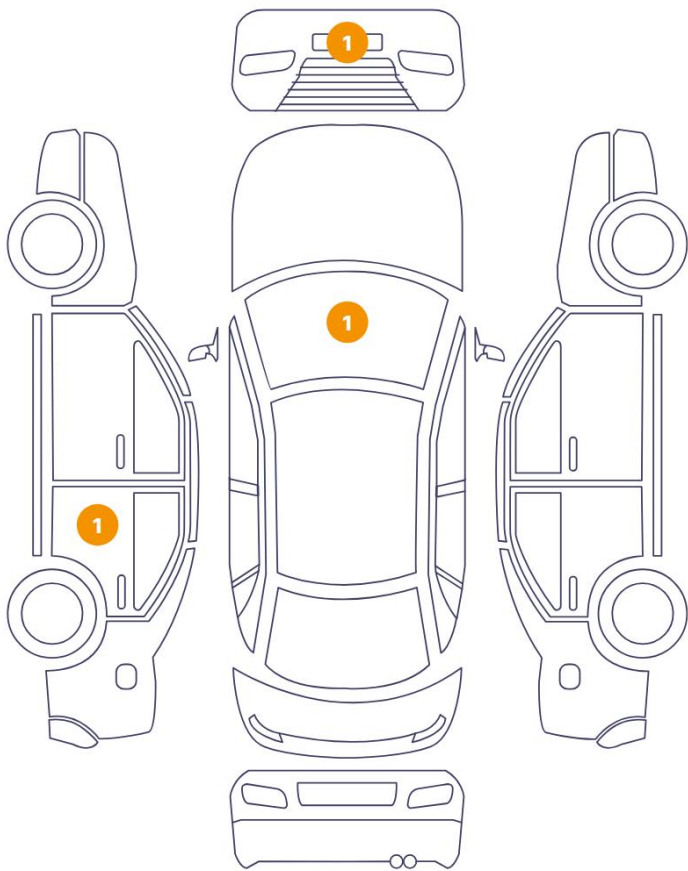
| | | | |
|------------------------|----------------------|------------------|-------|
| Air Conditioning | Climate Control | Alloy Wheel Size | 18 |
| Extra Wheel / Tyre Set | Winter Tyres - Alloy | Seat Heating | Front |
| Sunroof Type | Opening Panoramic | | |

Wheels & Tyres

| | | | |
|----------------------------|---|----------------------------|---|
| Right Front Tyre Depth | 4 | Left Front Tyre Depth | 4 |
| Right Rear Tyre Depth | 4 | Left Rear Tyre Depth | 4 |
| Extra Wheel - 1 Tyre Depth | 5 | Extra Wheel - 2 Tyre Depth | 5 |
| Extra Wheel - 3 Tyre Depth | 5 | Extra Wheel - 4 Tyre Depth | 5 |

Cosmetic Damage

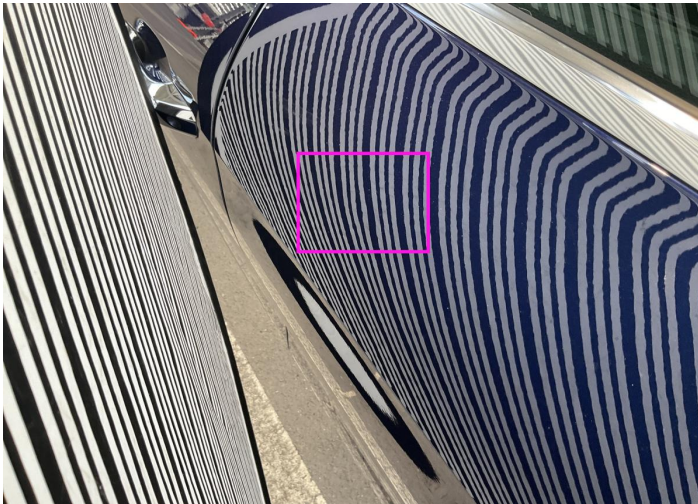
3 Schäden



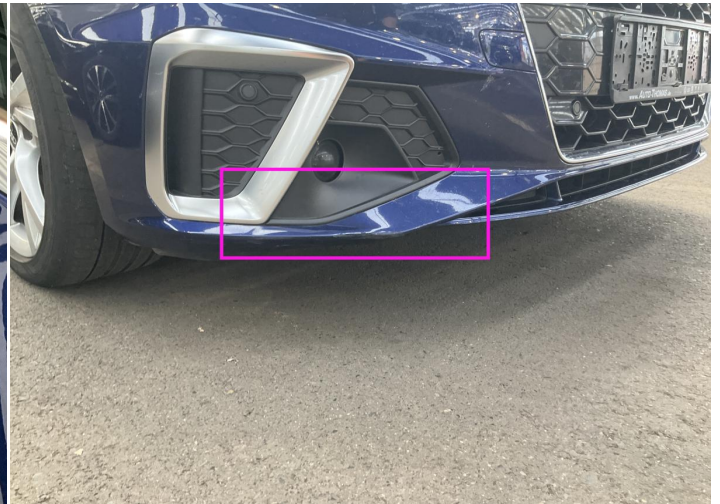
0 Schäden



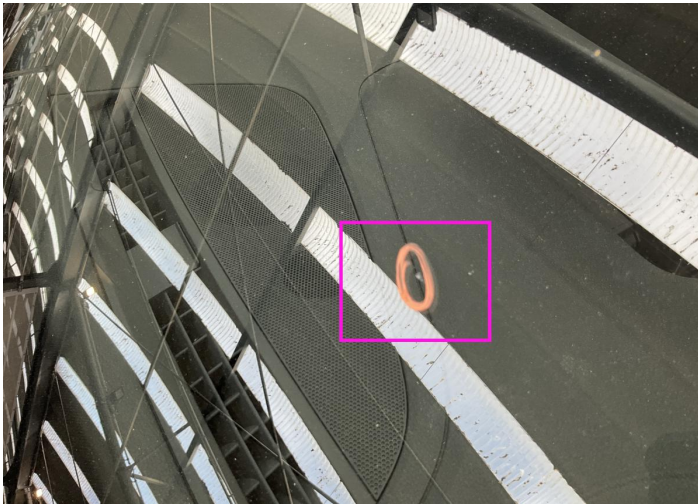
| Component | | Damage | Comments |
|-----------|--------------------|-------------------------|----------|
| 1 | Door / Back Left | Bodywork / Dent / Dent | |
| 2 | Bumper / Front | Paint / Scratch / Scuff | |
| 3 | Windshield / Front | Glass Break / Impact | |



1. Door / Back Left
Bodywork / Dent / Dent -



2. Bumper / Front
Paint / Scratch / Scuff -



3. Windshield / Front
Glass Break / Impact -

Mechanical Condition

Control Lights

| | | | |
|--|---|---------------------------------|---|
| Display Defect | ✓ | ABS Warning Light | ✓ |
| ESP Fault/Traction Control Malfunction Light | ✓ | Diesel Particulate Filter Light | ✓ |
| Airbag Warning Light | ✓ | Oil Pressure Warning Light | ✓ |
| Brake Warning Light | ✓ | Power Steering Warning Light | ✓ |
| Alternator / Battery | ✓ | All - wheel Drive | ✓ |
| No Dashboard Lights | ✓ | Tire Pressure Monitoring System | ✓ |

Equipments Test

| | | | |
|-------------------------------|---|---------------------------------------|---|
| Main & Spare Keys Functioning | ✓ | Electric Windows | ✓ |
| Navigation System | ✓ | Parking Sensors / Cameras Functioning | ✓ |
| AC / Heating System | ✓ | | |

Engine

| | | | |
|---------------------|---|---------------------|---|
| Engine Status / EML | ✓ | Engine Leak Visible | ✓ |
| Engine Starts | ✓ | | |

Gearbox

| | |
|----------|---|
| Gear Box | ✓ |
|----------|---|

Levels

| | | | |
|--------------|----|---------------|---|
| Brakes Fluid | NA | Coolant Fluid | ! |
|--------------|----|---------------|---|

Test Drive Inspection

| Steering Wheel | | | |
|--|---|---|---|
| Steering Noise / Anomaly | | ✓ | |
| Engine | | | |
| Engine Noise | ✓ | The Gears Scratch / Skip / Abnormal Operation | ✓ |
| Fume Quantity | ✓ | Power Loss | ✓ |
| Brake | | | |
| Brake System Anomaly | | ✓ | |
| General | | | |
| Test Driven Status | | ✓ | |
| ✓ <i>No troubles detected, good condition or correct tests, according to vehicle age and mileage</i> | | | |
| ! <i>Damages or malfunction detected that requires repairs by the buyer</i> | | | |
| NA <i>Not applicable</i> | | | |
| = <i>Not tested</i> | | | |

Disclaimer

Please also note the "UserGuide condition report", which shows the scope of the vehicle description.

[User Guide](#)