



Expertise

Protocol number: 41176907  
Order No. / Reference: 25114335  
Inspection date: 20 Aug 2025

Manufacturer: Audi	Model: A4 Avant 40 TDI quattro S tronic advanced
VIN: WAUZZZF45PA000458	



Vehicle details	
Manufacturer / Type / Model / Equipment	
Audi A4 Avant 40 TDI quattro S tronic advanced	
Vehicle Identification number	WAUZZZF45PA000458
Mileage (Read)	125,344 km
First registration	4 Aug 2022
Number of holders	1
Next periodical technical inspection	08/2025
(Report not on hand)	
Power / Engine displacement	150 kw / 1,968 ccm
Fuel type / Cylinder	Hybrid Diesel / E / 4
Gearbox / Number of gears	Automatic / 7
Type of drive	Front drive
Type of vehicle	Station wagon
Colour / colour code	Ibisweiss (Y9C)
Doors / Seats	5 / 5
Upholstery type	Leather
Colour of upholstery	Black-Anthracite
Vehicle with smoke odor	no



## Vehicle details

<b>Maintenance booklet / proof</b>	digital proof / complete	<b>Next maintenance in</b>	24,700 km
<b>Last maintenance on / at</b>	07/2025 at 124,762 km		
<b>Key is / should be</b>	2 / 2	<b>FZG documents</b>	ZB#2 (B) was available (copy), ZB#1 (S) was not available
		<b>Letter No.</b>	GM582959
<b>Previous damage / Accident</b>	Detectable	<b>Repainting</b>	Detectable
<b>Inspection conditions</b>	sufficient	<b>Lifting equipment / pit</b>	yes
<b>Test drive</b>	short drive on the company premises	<b>Engine function test</b>	Performed
<b>Manufacturer key number/ type code number</b>	0588 / BWH 00398		
<b>Emission standard</b>	EURO6;WLTP;AP;PI/CI; M, N1 I	<b>Fine dust sticker</b>	
<b>Permitted total weight</b>	2,230 kg	<b>Empty weight</b>	

## Tyres

### Mounted tyres

#	Tyre size	Type of tyre	Manufacturer	Tread depth
1)	245/40 R18 93Y	Summer tyres on Light alloy	Hankook	4mm / 4mm
2)	245/40 R18 93Y	Summer tyres on Light alloy	Hankook	7mm / 7mm

### Replacement

Typ	Tyre size	Type of tyre	Manufacturer	Tread depth
	Tirefit	Expiration date 05/2026		

**Legend:** Tread depth information for tires on the left is in the first place, for tires on the right is in the second place on the axle in the direction of travel

## Equipment

### Standard equipment

- AdBlue tank (12 liters) (tank for AdBlue solution to reduce nitrogen oxides in the exhaust gas using the SCR system)
- Airbag: Front side airbags and head airbag system
- "quattro" all-wheel drive with ultra technology (permanently available all-wheel drive with actively controlled torque distribution, ultra technology, and wheel-selective torque control. The system includes an electronically controlled all-wheel clutch, a traction clutch integrated into the rear axle differential, and an electronic differential lock (EDL) for all driven wheels. The ultra technology allows for a reduction in drag losses in the all-wheel drive train by opening both clutches.)
- Audi drive select (For individual vehicle tuning, with more dynamics or more comfort; enables the desired vehicle characteristics to be set in the available modes: - Auto - Comfort - Dynamic - Efficiency - Individual - Offroad (with Allroad quattro))
- Electrically adjustable and heated exterior mirrors (with integrated LED indicators, including heated windscreen washer nozzles)
- Exterior mirror housings in body color
- Onboard tools (in the luggage compartment)
- Roof rails black (for transport, stable and aerodynamically shaped, in aluminum)
- tachometer
- Electromechanical parking brake (includes parking brake function when stationary, starting aid through automatic release when starting off and full deceleration while driving across all 4 wheels)
- Chassis: Standard chassis (for good driving dynamics with very good ride comfort; shock absorbers and coil springs on the front and rear axles)
- Electric windows (front and rear)
- Window sill strips in black (rubber)
- Remote key, without SafeLock (unlocks and locks doors, luggage compartment and fuel tank flap - including Keyless Go - including convenient closing/opening of windows)
- Transmission: S tronic 7-speed
- Rear window wiper
- Top speed limited to 210 km/h
- Interior lighting (roof module front and rear including reading lights - capacitive operation at the front, illuminated center console, glove compartment light, passive door warning lights, trunk light on the left, in the A4 Avant/S4 Avant also on the right, and tailgate lighting)
- ISOFIX and Top Tether child seat attachment for the outer rear seats (holding device for the practical attachment of ISOFIX child seats with an additional upper attachment point (Top Tether) on the outer rear seats)
- trunk floor mat
- Headrests (5) (height adjustable front and rear)
- Airbag for driver and front passenger (with passenger airbag deactivation)
- Matt black accent surfaces (for dashboard, door sill trim and center console insert)
- Anti-lock braking system (ABS) (with electronic brake force distribution (EBD) and brake assist)
- Traction control (ASR)
- Audi connect Emergency Call & Service with Audi connect Remote & Control (Audi connect Emergency Call: - Online Breakdown Call - Audi Damage Service - Audi Service Appointment Online - Online Car Care Audi connect Remote & Control: - Parking Position - Vehicle Status - Remote Locking and Unlocking - Remote Control Auxiliary Heating - Anti-Theft Alarm Notification)
- Audi pre sense city (can detect vehicles and pedestrians within system limits at speeds up to approximately 85 km/h. If an impending collision is detected, the system warns the driver visually, acoustically, and, if necessary, with a sudden braking action. If necessary, it can initiate full deceleration to reduce speed or, under certain circumstances, avoid a collision.)
- Brake light, third raised
- Decorative inlays diamond lacquer silver grey
- Diesel particulate filter (DPF)
- Door sills with aluminum inserts at the front
- Electronic differential lock (EDS)
- Electronic Stabilization Control (ESC)
- Driver Information System (with high-resolution 5" monochrome display - display contents: speed, time, mileage, outside temperature, fuel warning with remaining range, gear shift recommendation, current radio station or music track, radio and media lists, phone menu (in conjunction with multifunction steering wheel), navigation information (if available). On-board computer with short- and long-term memory - including break recommendation)
- Floor mats front and rear (velour in black)
- Cruise control with speed limiter (helps maintain a speed of approximately 20 km/h or more, provided engine and braking performance permit. The speed limiter helps prevent speeds from exceeding approximately 30 km/h or more. The system limits the speed even when the accelerator pedal is depressed. It is operated via a separate steering column stalk. The set speed is displayed in the driver information system.)
- Dimmable interior mirror
- Parental controls



- Fuel tank with increased filling volume (58 l)
- Loading floor (one side in high-quality velour, the other as a waterproof, durable dirt tray)
- Load compartment cover manually
- Steering wheel: 3-spoke leather steering wheel with multifunction controls (The height and reach of the steering wheel are manually adjustable. The steering wheel is equipped with 6 multifunction buttons for convenient operation of the extensive standard and optional infotainment features.)
- Mild hybrid (Mild hybrid features an enhanced start-stop function, enhanced energy recovery during braking (recuperation) to charge the starter battery, and additional lithium-ion storage. This allows the system to recover more energy and shuts off the engine more frequently. A supplementary belt starter generator (BGA) is provided for mild hybrid. Purely electric driving is not possible.)
- Radio: MMI Radio Plus (10.1" color display (1,540 × 720) including MMI touch operation - Driver information system with 5" mono display - Bluetooth interface (hands-free calling and audio streaming) - Audi music interface with 1 USB-A and 1 USB-C port, each with data and charging functions - Passive speakers - AM/FM phase diversity - Speed-dependent volume adjustment - Voice dialogue system with natural language for controlling infotainment and vehicle functions - Wi-Fi hardware)
- Tire pressure monitoring display (visual and acoustic warning in case of pressure loss on one or more wheels, display in the driver information system)
- Headlights with LED technology (low beam, high beam, daytime running light and position light in LED, indicator light in incandescent lamp technology, with all-weather light - produce a daylight-like illumination of the road and impress with low energy consumption, a long service life and good perception by others)
- Seats: Standard front seats (with manual adjustment of seat height, seat fore/aft position, backrest angle, headrest height and belt height)
- Seats: Front seats manually adjustable
- Start-Stop System (helps reduce fuel consumption and CO2 emissions by shutting off the engine when stationary, e.g., at traffic lights. For a restart, the starting process is initiated as soon as the foot brake is released. Can be deactivated at any time using a button.)
- First aid kit with warning triangle (warning triangle in the trunk - first aid kit in the trunk - 2 safety vests in the door pockets)
- Electronic immobilizer
- Automatic climate control (single-zone automatic climate control - electronically regulates the air temperature, quantity and distribution, control dependent on the position of the sun - the air distribution can be adjusted using 5 main settings - the 3 LEDs integrated in the seat heating or seat ventilation buttons provide feedback on the selected setting (optional) - buttons for defrosting the front and rear windows - manual recirculation control and particle filter - with key identification and humidity sensor)
- LED rear lights (LED rear lights offer faster activation of the tail and brake lights, allowing for earlier detection by following traffic. The light signature is a visible recognition feature to the rear.)
- Steering column, manually height and axially adjustable
- Light/rain sensor (to control the automatic headlight switch, the coming home/leaving home function and the automatic windshield wiper function)
- Front center armrest
- Non-smoking version (one 12-volt socket each in front of the cup holders and in the rear for the 2nd row of seats - no cigarette lighter)
- Wheel: Rolling resistance-optimized tires, speed-limited (maximum permissible speed 210 km/h)
- Radio accessories: 8 speakers (passive) front and rear
- Radio accessories: Digital radio reception (DAB) (in addition to the analogue station selection, reception of digitally broadcast radio stations according to the DAB standard. Display of program information (e.g., artist and title) as well as additional information in the form of a slideshow (e.g., cover and weather). A second DAB tuner with a second DAB antenna continuously searches for alternative reception frequencies for the selected station. The station list is updated simultaneously.)
- Tire repair kit (compressor and tire sealant, maximum permissible speed 80 km/h)
- Electromechanical power steering (maintenance-free rack-and-pinion steering with speed-sensitive steering assistance; precise steering feel at high speeds, excellent parking assistance.)
- Seat covers in Index fabric (seat center panels in Index fabric black or rock gray - seat side bolsters, headrests, center armrest in plain black or rock gray fabric)
- Seats: Folding rear seat backrest (split 40:20:40 or fully foldable - center armrest - including lashing eyes, 4-way in the luggage compartment, for securing luggage and objects - attachment points for the luggage compartment net, with removable partition net; can be attached to the body or to the folded rear seat backrest; useful both when the rear seat backrest is raised or folded down on one side and when both sides are folded down)
- Glazing: Windscreen with thermal and acoustic glazing (windscreen with thermal glazing, green tinted - improved exterior noise insulation)
- Central locking "Keyless-Go" without safe security (keyless engine start)

## Extra equipment

- AdBlue tank (24 liters) (larger tank for AdBlue solution to reduce nitrogen oxides in the exhaust gas using the SCR system)
- Headlining in black fabric
- Door sills with aluminum inserts at the front, illuminated
- Driver information system with color display
- Chassis: Sports chassis (with tighter suspension and damping for more direct road contact and sportier handling with lowering by 23 mm compared to standard chassis, shock absorbers and coil springs on the front and rear axles)
- Luggage compartment mat, variably foldable (foldable and collapsible in several segments; can be used in its full length to cover the luggage compartment floor even when the rear seat backrest is folded down, used for variable division of the loading space; protective length sufficient also for the loading edge and the bumper.)
- 3-zone comfort automatic climate control (in addition to the automatic climate control: - climate control panel with large TFT display and capacitive rocker switches - electronically regulates the air temperature and distribution individually for the driver and front passenger - additional climate control panel for adjusting the rear compartment temperature in the rear center console - automatic air recirculation control with dust and odor-separating allergen filter - residual heat utilization)
- Package: Ambient lighting package plus (3 predefined color profiles; additional interactive and individual color profile. The interactive color profile is controlled by the Audi drive select modes. 30 colors are available for the individual color profile. The color adjustments are made for the contour and ambient lighting features: -Entry lights on the underside of the rear doors (white) -Rear footwell lighting -Front cup holders (multi-colored) -Ambient door lighting front/rear (multi-colored) -Contour lighting (multi-colored))
- Seat covers in microfiber Dinamica/leather combination (seat center panels of the front seats and the two outer rear seats in microfiber Dinamica black or rock gray - seat side bolsters and headrest center panels in the front in leather black or rock gray)
- Heated front seats
- Front sports seats (with manual adjustment of seat height, seat fore/aft position, seat angle, backrest angle, headrest and belt height; with pronounced seat side bolsters for better lateral support in curves, extendable thigh support)
- Glazing: Sun protection glazing tinted for acoustic glazing (rear window, rear door and side windows tinted)
- Audi connect navigation & infotainment
- Exterior mirrors electrically adjustable, heated and foldable, automatically dimming on both sides
- Rear parking aid
- Elimination of model name and performance/technology lettering
- High beam assistant
- Luggage compartment lid, electrically opening and closing (The luggage compartment lid can be opened electrically by pressing the button on the vehicle key, in the driver's door, or the soft-touch button on the luggage compartment lid handle. Closing the luggage compartment lid is just as easy and convenient as opening it: simply press the button on the inside of the luggage compartment lid, the button in the driver's door, or the button on the vehicle key. A closing aid makes manual closing easier when necessary.)
- Interior elements in artificial leather (lower center console and armrest in the doors in artificial leather)
- Paint finish: Uni
- Steering wheel: Leather steering wheel in 3-spoke design with multifunction plus
- Business package (MMI navigation plus with MMI touch (including driver information system with color display) - Audi phone box - 3-spoke leather steering wheel with multifunction plus - Heated front seats - Frameless, automatically dimming interior mirror - Electrically adjustable, heated, and folding exterior mirrors with automatic dimming on both sides - Rear parking aid - High beam assistant - Manual sunblind for the rear door windows)
- Wheel: Deselect rolling resistance-optimized tires, removal of speed limit (18 inches) (tires 245/40 R 18 93Y)
- Wheel: Audi new car tire guarantee
- Wheel: Light alloy wheels, 10-spoke dynamic, graphite grey, high-sheen (size 8 JX 18 with tires 245/40 R 18)
- Radio accessories: Bang & Olufsen Premium Sound System with 3D sound (19 speakers (including center speaker/subwoofer and additional 3D sound tweeters and midrange speakers) - 16-channel amplifier with 755 watts - illuminated front speaker grilles - speed-dependent volume adjustment - spatial sound reproduction with the new 3D sound feature. This is generated by additional speakers in the A-pillar, the midrange speakers, and the Fraunhofer Symphoria technology.)
- Glazing: Acoustic glazing for front door windows (Front door windows with acoustic glazing provide improved exterior noise insulation.)



## Brief expert findings

Documents submitted	At the time of the inspection, the registration certificate Part 2 (letter) was available, but the registration certificate Part 1 (certificate) was not. (Copy)
VIN comparison	The vehicle identification number (VIN) was read from the vehicle and its conformity with the submitted documents was verified during the inspection by the undersigned.
Inspection	The inspection conditions were sufficient for the assessment of the vehicle. Lifting equipment and a pit were available for examining the vehicle.
Test drive	A short maneuvering and shunting trip was carried out on the company premises.
Engine function test	An engine test run was performed.

## Value reducing factors

No.	Component group	Description
1	Mudguard - left side	Mudguard - left side - Stone chips - Smart repair
2	Wheel / tyres	Alloy rim - front right side - Scratched - Loss in value
3	Door - rear left side	Door - Scratch(es) - Paint
4	Rear bumper	Rear bumper - Scratch(es) - Paint
5	Roof	Roof rail - right side - Dent / paintcoat damage - Repair and paint
6	Roof	Roof - Stone chips - Paint
7	Front bumper	Front bumper - Scratch(es) - Paint
8	Bonnet	Bonnet (Rostunterwandert) - Stone chips - Paint
9	Vehicle glazing	Windscreen - Stone chips - Replace

## Previous damages

No.	Previous damage	Extent of damage (Net)
1	Rear, Side - left, Provided by user / customer, from 27 Mar 2024	15.866,86 €

## Repainting

No.	Repainting
1	Door - front left side, Professionally carried out, Invoice of repair done Non-existent
2	Door - front right side, Professionally carried out, Invoice of repair done Non-existent
3	Roof, Professionally carried out, Invoice of repair done Non-existent
4	Roof rail - left side, Professionally carried out, Invoice of repair done Non-existent
5	Roof rail - right side, Professionally carried out, Invoice of repair done Non-existent
6	Boot lid / rear door, Professionally carried out, Invoice of repair done Non-existent
7	Mudguard - left side, Professionally carried out, Invoice of repair done Non-existent
8	Mudguard - right side, Professionally carried out, Invoice of repair done Non-existent
9	Bonnet, Professionally carried out, Invoice of repair done Non-existent
10	Side panel - rear left side, Professionally carried out, Invoice of repair done Non-existent
11	Side panel - rear right side, Professionally carried out, Invoice of repair done Non-existent
12	Door - rear left side, Professionally carried out, Invoice of repair done Non-existent
13	Door - rear right side, Professionally carried out, Invoice of repair done Non-existent

## Paint coat thickness measurement

Roof	277 µm	Roof rail - left side	370 µm
------	--------	-----------------------	--------





Roof rail - right side	332 µm	Boot lid / rear door	191 µm
Mudguard - left side	254 µm	Mudguard - right side	275 µm
Bonnet	271 µm	Side panel - rear left side	598 µm
Side panel - rear right side	257 µm	Door - rear left side	262 µm
Door - rear right side	273 µm	Door - front left side	267 µm
Door - front right side	282 µm		

## Order/Scope of order

The order was placed to prepare a sales report for the vehicle described. This includes the following:

- Description of core relevant information about the vehicle
- Documentation of equipment features  
(*Delivery by third-party service providers*)
- Documentation of damage, defects, missing parts
- Documentation of previous damage, unrepaired previous damage, repainting
- a brief visual or functional inspection of the equipment details if possible.  
(*Functional tests of driver assistance systems are not included in the scope of services!*)
- a photo documentation of the vehicle

## Basis for the order

This product is based on the Alphabet Fuhrpark GmbH guidelines for vehicle returns and valuations. The expert makes the explicit findings in each individual case objectively within the framework of the specified standards based on his or her own expertise.

The vehicle inspection takes place in a disassembled state.

Damage or defects that can only be detected during disassembly/diagnosis work or through advanced knowledge remain within the scope of the prognosis risk. An extended risk exists for concealed defects caused by fraudulent deception and not identifiable by the expert.

Damage or defects resulting from normal use or wear and tear of the vehicle will be accepted according to the applicable standard.

There was no explicit identification or monetary consideration of the expected features within the product.

Features which in their nature and severity slightly exceed normal use but do not constitute unacceptable damage will be documented and identified under signs of use if necessary.

Damage or defects which, according to the underlying standard, can no longer be attributed to normal use or wear and tear are listed in the product under "Depreciating Factors".

Depending on the product specification, a monetary ID can be provided. If this takes place, the costs can be 100% d or pro rata depending on the vehicle's age and mileage.

## Previous damages

According to available information previous damages were repaired at the vehicle. Traces of repairs, which allow conclusions about the area of repair, were not recognizable during the inspection.



Figure 1: Diagonal front (left)



Figure 2: Diagonal front (right)



Figure 3: Diagonal rear (left)



Figure 4: Diagonal rear (right)



Figure 5: Interior - front



Figure 6: Interior - rear





Figure 7: Instrument cluster



Figure 8: Instrument panel



Figure 9: interior 360° view



Figure 10: Cargo area

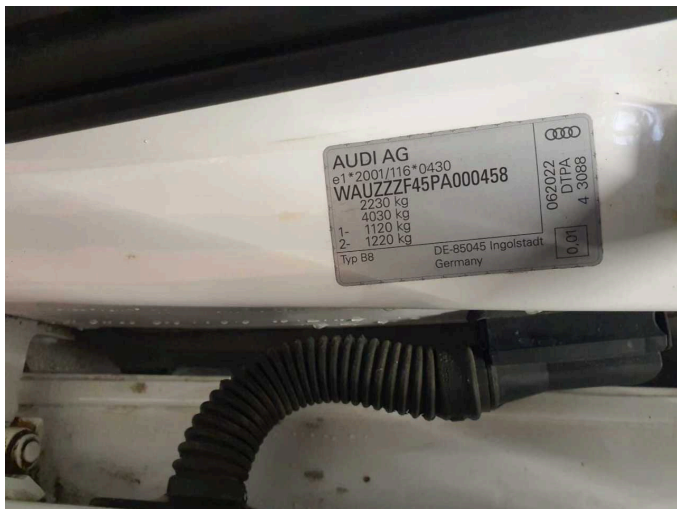


Figure 11: VIN



Figure 12: Mounted tyres





Figure 13: Documents



Figure 14: Documents

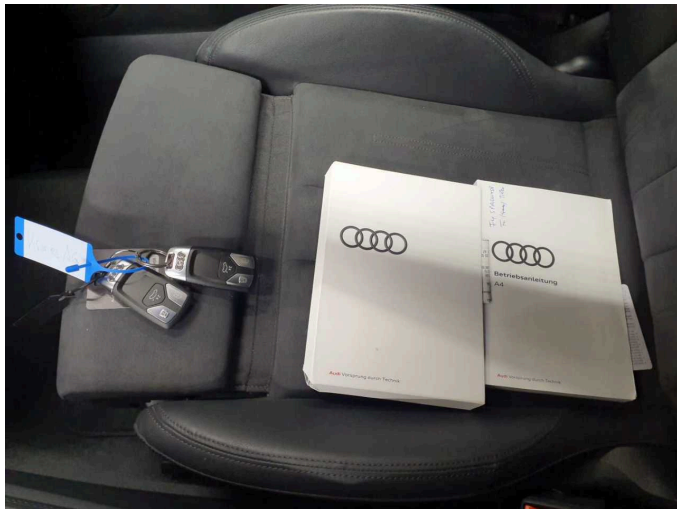


Figure 15: Documents

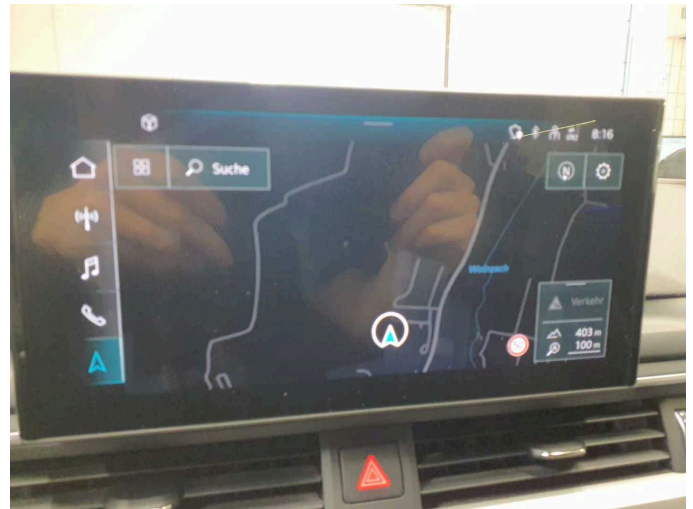


Figure 16: Navigation



Figure 17: Misc.



Figure 18: Misc.





Figure 19: Misc.



Figure 20: Misc.



Figure 21: Misc.



Figure 22: Misc.



Figure 23: Misc.



Figure 24: Misc.

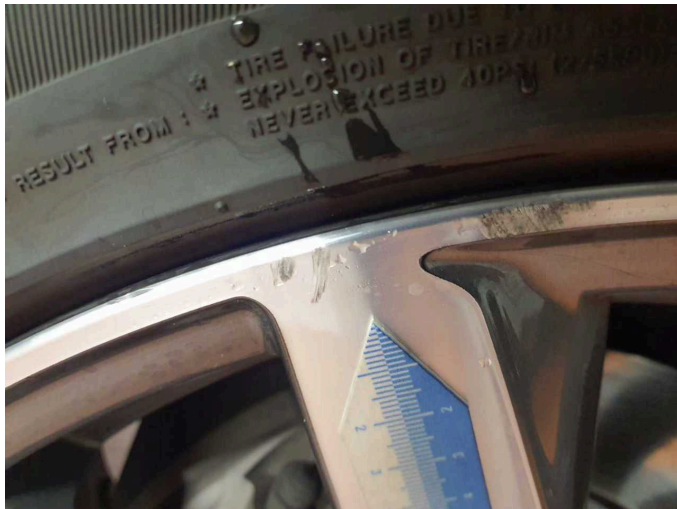




**Damage 1:** Mudguard - left side: Mudguard - left side - Stone chips - Smart repair



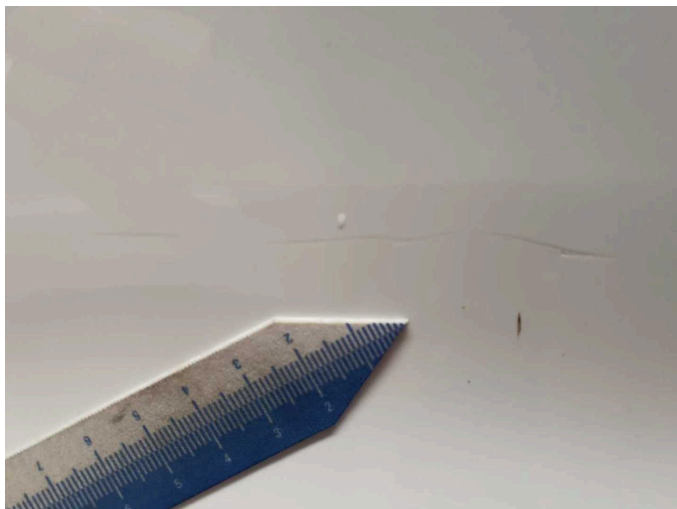
**Damage 1:** Mudguard - left side: Mudguard - left side - Stone chips - Smart repair



**Damage 2:** Wheel / tyres: Alloy rim - front right side - Scratched - Loss in value



**Damage 2:** Wheel / tyres: Alloy rim - front right side - Scratched - Loss in value



**Damage 3:** Door - rear left side: Door - Scratch(es) - Paint



**Damage 3:** Door - rear left side: Door - Scratch(es) - Paint



**Damage 3:** Door - rear left side: Door - Scratch(es) - Paint



**Damage 4:** Rear bumper: Rear bumper - Scratch(es) - Paint



**Damage 4:** Rear bumper: Rear bumper - Scratch(es) - Paint



**Damage 4:** Rear bumper: Rear bumper - Scratch(es) - Paint



**Damage 4:** Rear bumper: Rear bumper - Scratch(es) - Paint



**Damage 5:** Roof: Roof rail - right side - Dent / paintcoat damage - Repair and paint





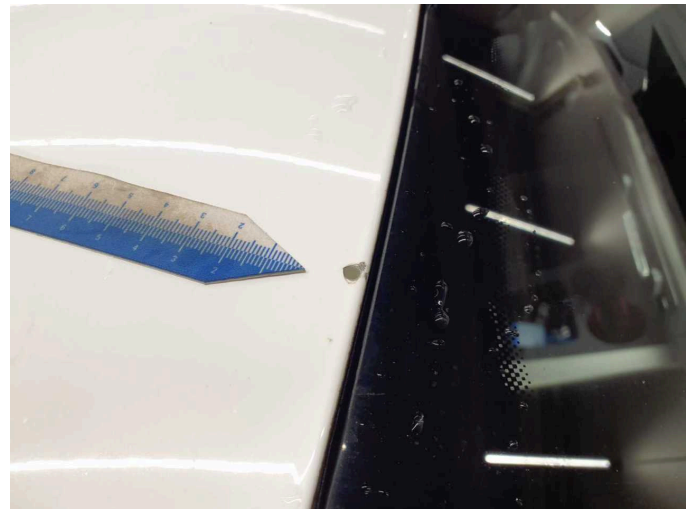
**Damage 5:** Roof: Roof rail - right side - Dent / paintcoat damage - Repair and paint



**Damage 5:** Roof: Roof rail - right side - Dent / paintcoat damage - Repair and paint



**Damage 5:** Roof: Roof rail - right side - Dent / paintcoat damage - Repair and paint



**Damage 6:** Roof: Roof - Stone chips - Paint



**Damage 6:** Roof: Roof - Stone chips - Paint



**Damage 7:** Front bumper: Front bumper - Scratch(es) - Paint



**Damage 7:** Front bumper: Front bumper - Scratch(es) - Paint



**Damage 7:** Front bumper: Front bumper - Scratch(es) - Paint



**Damage 7:** Front bumper: Front bumper - Scratch(es) - Paint



**Damage 8:** Bonnet: Bonnet (Rostunterwandert) - Stone chips - Paint

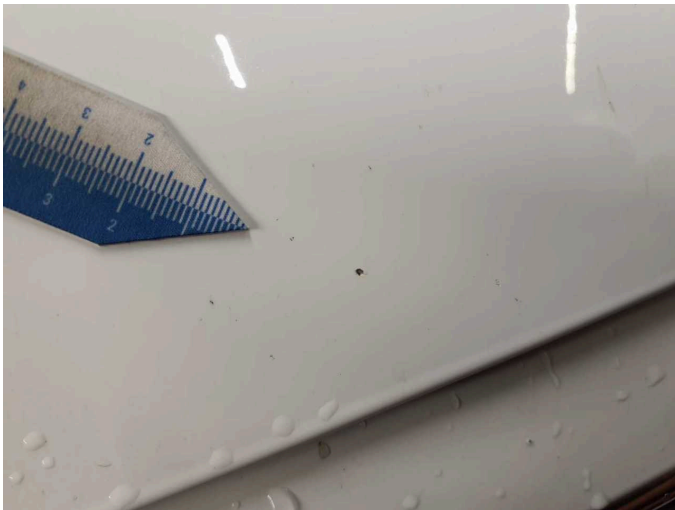


**Damage 8:** Bonnet: Bonnet (Rostunterwandert) - Stone chips - Paint



**Damage 8:** Bonnet: Bonnet (Rostunterwandert) - Stone chips - Paint





**Damage 8:** Bonnet: Bonnet (Rostunterwandert) - Stone chips - Paint



**Damage 9:** Vehicle glazing: Windscreen - Stone chips - Replace



**Damage 9:** Vehicle glazing: Windscreen - Stone chips - Replace



**Damage 9:** Vehicle glazing: Windscreen - Stone chips - Replace



**Repainting 1:** Door - front left side



**Repainting 2:** Door - front right side



**Repainting 3: Roof**



**Repainting 4: Roof rail - left side**



**Repainting 5: Roof rail - right side**



**Repainting 6: Boot lid / rear door**



**Repainting 7: Mudguard - left side**



**Repainting 8: Mudguard - right side**





**Repainting 9:** Bonnet



**Repainting 10:** Side panel - rear left side



**Repainting 11:** Side panel - rear right side



**Repainting 12:** Door - rear left side



**Repainting 13:** Door - rear right side





# Wartungshistorie

(gemäß Auftraggeber Informationen)

Fahrgestellnummer: WAUZZZF45PA000458  
Hersteller / Modell: AUDI AUDI A4 Avant 40 TDI quattro S tronic advanced

Datum	KM-Stand	Beschreibung
25.07.2025	124.762	Getriebeöl ern/prüfen; Kraftstofffilter ern; Motoröl b. Wartung; Ölfilter ern; Regelwartungsdienst; Reparatur Sonstiges; Wartung Sonstiges
26.10.2024	92.890	Bremsbelagfühler ern; Bremse Sonstiges; Bremsklötze vorne; Bremsscheiben + Klötze v; Bremsscheiben vorne; Luftfiltereinsatz ern; Motoröl b. Wartung; Ölfilter ern; Regelwartungsdienst; Wartung Sonstiges
30.07.2024	82.220	Bremsflüssigkeit; Bremsflüssigkeit ern
05.01.2024	59.173	Getriebeöl ern/prüfen; Kraftstofffilter ern; Motoröl b. Wartung; Ölfilter ern; Regelwartungsdienst; Reparatur Sonstiges; Wartung Sonstiges
12.06.2023	33.637	Motoröl b. Wartung; Regelwartungsdienst