



AUDI A4
A4 Avant 40 TDI quattro S tronic

VIN NO WAUZZZF45MA078203
Registration Number 45MA078203



MOT Date	Number of Owners	Number of Keys	Odometer Reading
2026-06-01	1	2	84391 km
Last Service	Last Service Mileage	First Registration Date	Country First Registered
2025-06-05	80072	2021-06-22	Germany

Inspection Report Summary

Customer	BCA Online	Report Number	P20250926121358
Inspection Date / Place	2025-09-26 / BCA Neuss	Cosmetic Grade	5

Vehicle Summary

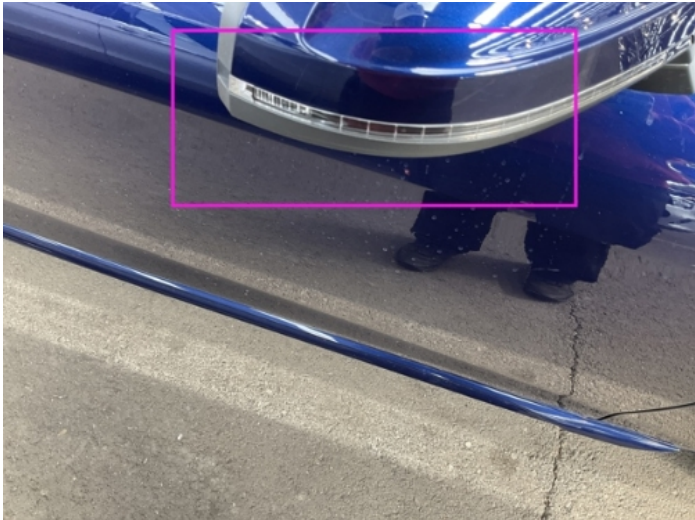
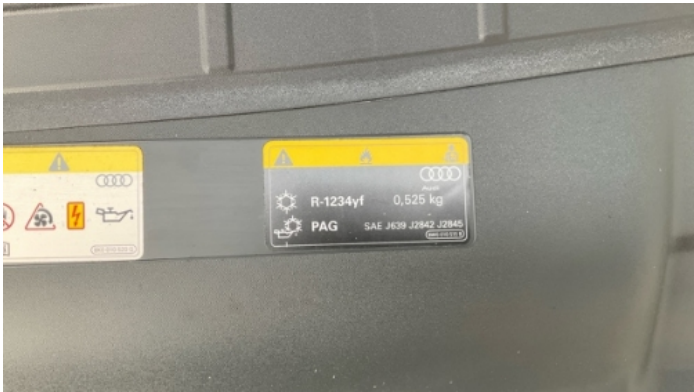
Vehicle Condition	Runner	VAT Type	Qualifying
Fuel Type	Diesel	Road Worthy	Yes
Colour	Blue	Engine Size (cc)	1968
Engine Size	2.0	No of Doors	5
Body Type	Stationwagon / Estate	Drive Train	All-Wheel-Drive permanent
Seat Colour		No of Seats	5
Seat Covering Name	Schwarz	Seat Covering	Cloth/Leather
Charging Cables		WLTP CO2 Emissions	
Gearbox Type	Automatic		

Vehicle History & Documents

Service Book Available	Present	Next Service Mileage	km
Previous Usage		Imported	No
Manufacturer Warrenty			







Equipment

Tow ball	360°camera	Alloys wheels	Bluetooth telephone interface
Diesel particulate filter	Digitaldashboard	Heated wing mirrors	Remote central locking
Roof rails	Stability control	Electrictailgate	LED Headlamps
Rear parking sensors	USB Socket	Airbag Status	Anti-lock braking
Cruise control	Digital Radio	Front parking sensors	Remote adjusting wing mirrors
Reversing Camera	Satellite navigation	Electrically folding wing mirrors	Leather steering wheel
Radio			

Equipment Details

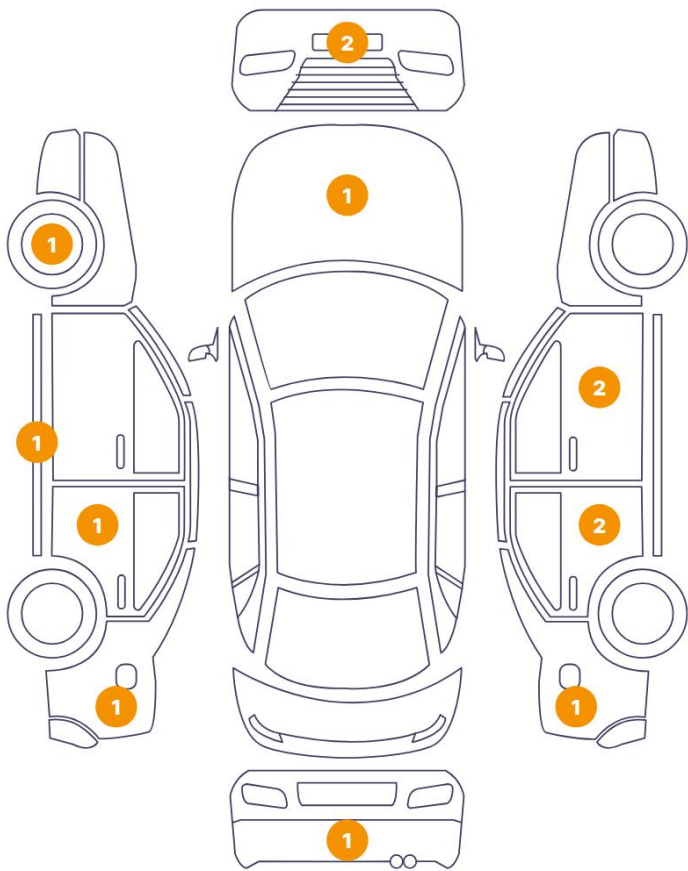
Tow Ball Type	Pivoted	Air Conditioning	Three Zone Climate Control
Alloy Wheel Size	18	Seat Heating	Front

Wheels & Tyres

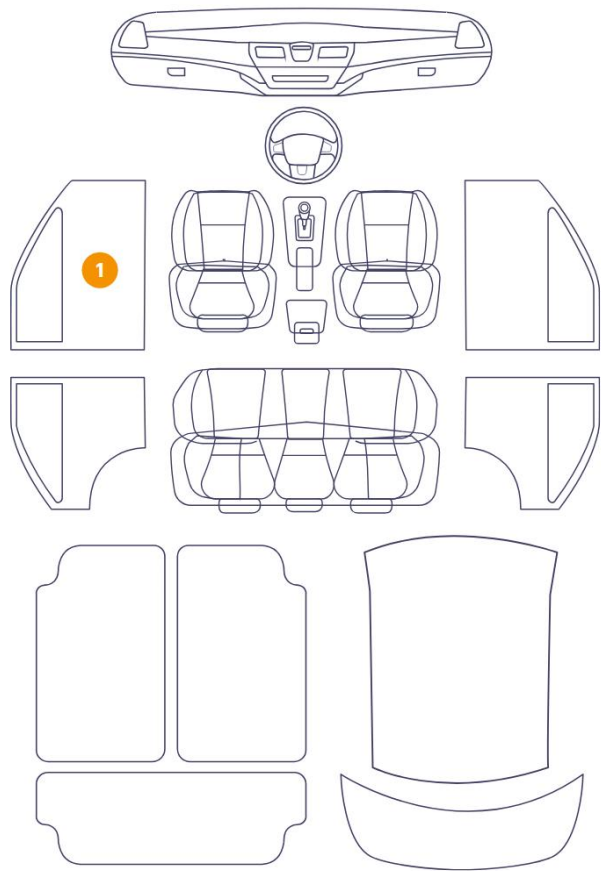
Right Front Tyre Depth	7	Left Front Tyre Depth	7
Right Rear Tyre Depth	7	Left Rear Tyre Depth	7

Cosmetic Damage

13 Schäden



1 Schäden



Component		Damage	Comments
1	Hood	Paint / Stone Chip	
2	Bumper / Front	Paint / Scratch / Scuff	
3	Bumper / Front	Paint / Scratch / Scuff	
4	Rim / Front Left	Out of Bodywork / Scratch	
5	Rocker Panel / Center Left	Paint / Scratch / Scuff	
6	Panel Filling / Front Left	Interior / Scratched	
7	Door / Back Left	Paint / Scratch / Scuff	
8	Side Panel / Back Left	Paint / Scratch / Scuff	
9	Bumper / Back	Paint / Scratch / Scuff	
10	Side Panel / Back Right	Paint / Scratch / Scuff	
11	Door / Back Right	Paint / Scratch / Scuff	
12	Pillar / Back Right	Paint / Scratch / Scuff	

13	Door / Front Right	Paint / Scratch / Scuff
----	--------------------	-------------------------

14	Mirror Shell / Front Right	Paint / Scratch / Scuff
----	----------------------------	-------------------------



1. Hood
Paint / Stone Chip -



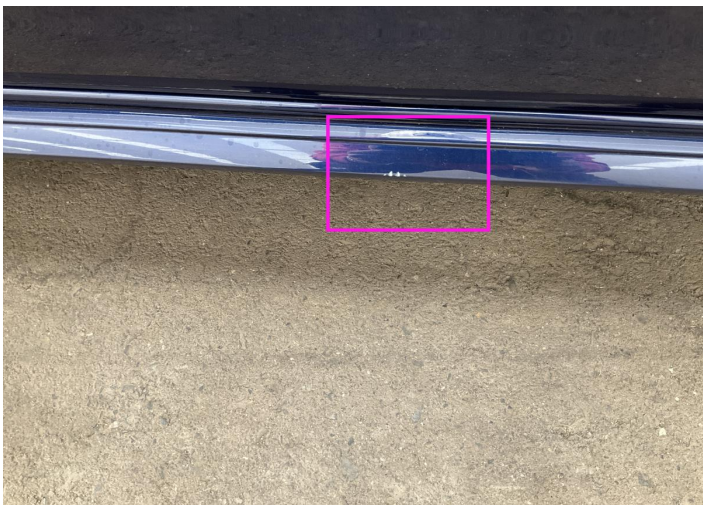
2. Bumper / Front
Paint / Scratch / Scuff -



3. Bumper / Front
Paint / Scratch / Scuff -



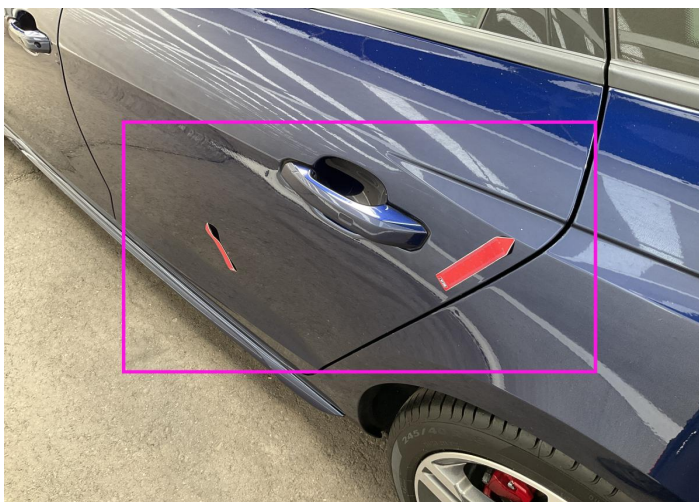
4. Rim / Front Left
Out of Bodywork / Scratch -



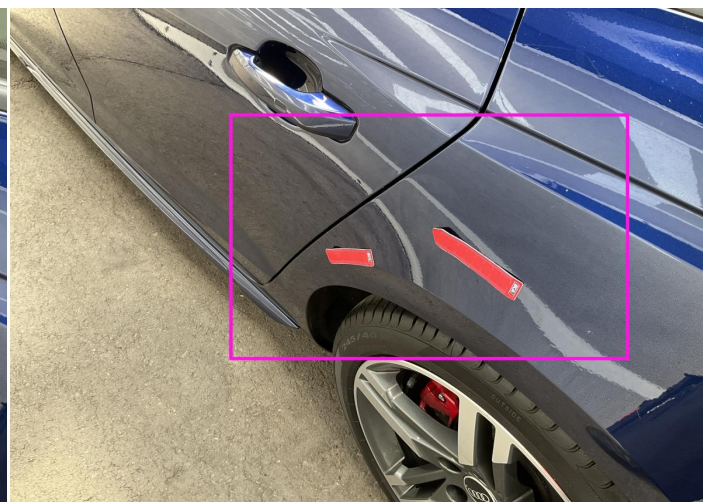
5. Rocker Panel / Center Left
Paint / Scratch / Scuff -



6. Panel Filling / Front Left
Interior / Scratched -



7. Door / Back Left
Paint / Scratch / Scuff -



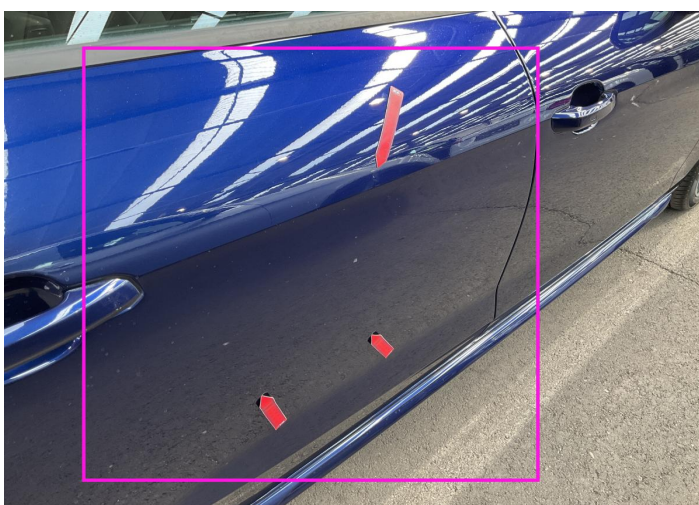
8. Side Panel / Back Left
Paint / Scratch / Scuff -



9. Bumper / Back
Paint / Scratch / Scuff -



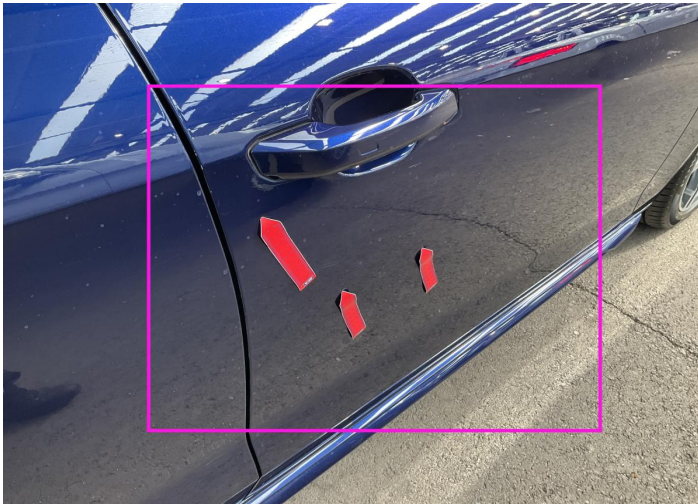
10. Side Panel / Back Right
Paint / Scratch / Scuff -



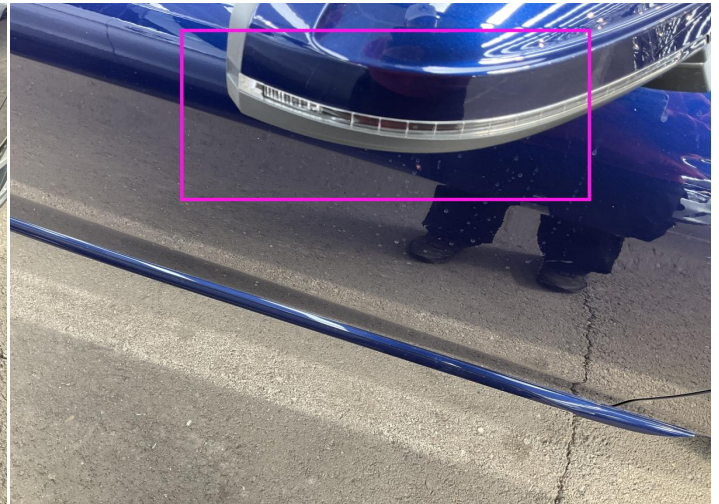
11. Door / Back Right
Paint / Scratch / Scuff -



12. Pillar / Back Right
Paint / Scratch / Scuff -



13. Door / Front Right
Paint / Scratch / Scuff -



14. Mirror Shell / Front Right
Paint / Scratch / Scuff -

Mechanical Condition

Equipments Test

Central Locking	✓	Electric Windows	✓
Navigation System	✓	Audio Equipment	✓
AC / Heating System	✓	Main & Spare Keys Functioning	✓
Parking Sensors / Cameras Functioning	✓	Other Equipments	✓

Control Lights

ABS Warning Light	✓	ESP Fault/Traction Control Malfunction Light	✓
Diesel Particulate Filter Light	✓	Airbag Warning Light	✓
Oil Pressure Warning Light	✓	Brake Warning Light	✓
Power Steering Warning Light	✓	Alternator / Battery	✓
All - wheel Drive	✓	No Dashboard Lights	✓
Display Defect	✓	Service Light	✓
Tire Pressure Monitoring System	✓		

Engine

Engine Status / EML	✓	Engine Leak Visible	✓
Engine Starts	✓		

Gearbox

Gear Box	✓
----------	---

Levels

Brakes Fluid	✓	Coolant Fluid	✓
--------------	---	---------------	---

Test Drive Inspection

Steering Wheel			
Steering Noise / Anomaly		✓	
Engine			
Engine Noise	✓	The Gears Scratch / Skip / Abnormal Operation	✓
Fume Quantity	✓	Power Loss	✓
Brake			
Brake System Anomaly		✓	
General			
Test Driven Status		✓	
✓ <i>No troubles detected, good condition or correct tests, according to vehicle age and mileage</i>			
! <i>Damages or malfunction detected that requires repairs by the buyer</i>			
NA <i>Not applicable</i>			
= <i>Not tested</i>			

Disclaimer

Please also note the "UserGuide condition report", which shows the scope of the vehicle description.

[User Guide](#)