



Expertise

Protocol number: 41180817
Order No. / Reference: 25134968
Inspection date: 22 Aug 2025

Manufacturer: Audi

Model: A4 Avant 40 TDI S tronic advanced

VIN: WAUZZZF44PA072896



Vehicle details	
Manufacturer / Type / Model / Equipment	
Audi A4 Avant 40 TDI S tronic advanced	
Vehicle Identification number	WAUZZZF44PA072896
Mileage (Read)	160,038 km
First registration	6 Jun 2023
Number of holders	1
Power / Engine displacement	150 kw / 1,968 ccm
Fuel type / Cylinder	Hybrid Diesel / E / 4
Gearbox / Number of gears	Automatic / 7
Type of drive	Front drive
Type of vehicle	Station wagon
Colour / colour code	Brillantschwarz Uni (Y9B)
Doors / Seats	5 / 5
Upholstery type	Cloth
Colour of upholstery	Grey-Black



Vehicle details

Maintenance booklet / proof	digital proof / complete	Next maintenance in	11,000 km
Last maintenance on / at	04/2025 at 141,022 km		
Key is / should be	2 / 2	FZG documents	ZB#2 (B) was available (copy), ZB#1 (S) was not available
		Letter No.	GV175250
Previous damage / Accident	None detectable	Repainting	None detectable
Inspection conditions	sufficient	Lifting equipment / pit	yes
Test drive	Not performed	Engine function test	Performed
Manufacturer key number/ type code number	0588 / BWG 00705		
Emission standard	EURO6;WLTP;AP;PI/CI; M, N1 I	Fine dust sticker	
Permitted total weight	2,175 kg	Empty weight	

Tyres

Mounted tyres

#	Tyre size	Type of tyre	Manufacturer	Tread depth
1)	245/40 R18 97Y	Summer tyres on Light alloy	Michelin	6mm / 6mm
2)	245/40 R18 97Y	Summer tyres on Light alloy	Michelin	7mm / 7mm

Replacement

Typ	Tyre size	Type of tyre	Manufacturer	Tread depth
	Tirefit	Expiration date 03/2027		

Legend: Tread depth information for tires on the left is in the first place, for tires on the right is in the second place on the axle in the direction of travel



Equipment

Standard equipment

- | | |
|---|--|
| <ul style="list-style-type: none"> • Airbag for driver and front passenger • Accent surfaces matt black • Traction control (ASR) • Audi drive select • Audi pre sense city • Vehicle tool kit • Fabric headliner • Diesel particulate filter (DPF) • Door sills with aluminum inserts at the front • Electronic differential lock (EDS) • Driver Information System • Electric window lifter • Radio key, without SafeLock • Cruise control with speed limiter • Rear window wiper • Interior lighting • ISOFIX and Top Tether child seat attachment for the outer rear seats • Headrests (5) • Load compartment cover manually • Steering column, manually height and axially adjustable • Mild hybrid • Non-smoking version • Radio: MMI Radio plus • Tire pressure monitoring display • Power steering, electromechanical • Seats: Front seats manually adjustable • Bandage material with warning triangle • Electronic immobilizer • Central locking "Keyless-Go" without safe security | <ul style="list-style-type: none"> • Airbag: Front side airbags and head airbag system • Anti-lock braking system (ABS) • Audi connect emergency call & service with Audi connect Remote & Control • Exterior mirror housings in body color • Brake light, third raised • Roof rails black • tachometer • Electromechanical parking brake • Electronic Stabilization Control (ESC) • Chassis: Standard chassis • Window sill strips in black (rubber) • Floor mats front and rear • Transmission: S tronic 7-speed • Top speed limited to 210 km/h • Parental controls • Automatic air conditioning • trunk floor mat • loading floor • LED rear lights • Light/rain sensor • Front center armrest • Wheel: Rolling resistance optimized tires, speed limited • Radio accessories: Digital radio reception (DAB) • Tire repair kit • Seats: Folding rear seat backrest • Start-stop system • Glazing: Windscreen with thermal insulation and acoustic glazing |
|---|--|

Extra equipment

- | | |
|---|---|
| <ul style="list-style-type: none"> • AdBlue tank (24 liters) (larger tank for AdBlue solution to reduce nitrogen oxides in the exhaust gas using the SCR system) • Audi connect Navigation & Infotainment (Online Points of Interest - Online Traffic Info.plus - Hazard Information - Weather Information - Wi-Fi Hotspot - Online News - Navigation with Google Satellite Map - Online Search for Navigation Destinations - Online Voice Input - Highly Detailed 3D City Map - On-Street Parking - Online Radio - Hybrid Radio - User Profiles - Amazon Alexa Integration - Online Media Streaming - myAudi Navigation - Online Traffic Sign Info - HoloRide Interface) • Decorative insert in aluminum ellipse silver (for dashboard, door panels and center console) | <ul style="list-style-type: none"> • Airbags: Front and rear side airbags and head airbag system (Rear side airbags provide additional protection for rear passengers. Side airbags are integrated into the front seat backrests and the rear side cushions. With head airbag system: deploys in front of the side window area (front and rear) and thus protects front and outer rear passengers in the event of a side impact.) • Electrically adjustable, heated, and foldable exterior mirrors, automatically dimming on both sides (including automatic curbside mirror function for the passenger side mirror with integrated LED indicators, including heated windshield washer nozzles. The automatic curbside mirror folds down when reverse gear is engaged, giving the driver a better view of the curb) • Elimination of model name and performance/technology lettering |
|---|---|



- Parking Aid Plus (Acoustic and visual parking aids at the front and rear assist with parking and maneuvering. With selective, visual display of the distance to detected objects on the MMI display, depending on the current steering angle and direction of travel. The virtual lane indicator also offers lateral guidance lines that are calculated in advance based on the currently selected steering angle. Measurement is performed by ultrasonic sensors discreetly integrated into the bumpers.)
- High Beam Assistant (within the system's limits, it automatically detects the headlights of oncoming traffic, the taillights of other road users, and light sources in built-up areas. Depending on the traffic situation, the high beam is automatically switched on or off. The system thus improves the driver's visibility and increases comfort.)
- Camera-based traffic sign recognition (Supports the driver by displaying traffic signs detected within the system's limits, such as speed limits, no-overtaking zones, and temporary speed limits that are within the detection range of the front camera. The traffic sign recognition is displayed automatically on the digital instrument cluster display or in the optional Audi virtual cockpit.)
- Headrests: variable headrests for front seats (with manual adjustment of headrest height and distance)
- Fuel tank with increased filling volume (54 l)
- Paint finish: Uni
- Matrix LED headlights, LED taillights, and headlight cleaning system (Matrix LED technology combines a camera system with LED light sources and precise optics for highly adaptive light distribution. In addition to the Matrix LED function, the headlights also feature the following functions: - visually enhanced daytime running lights - low beam - high beam - position light - dynamic indicator light - cornering light - all-weather light - static cornering light - motorway light - automatic dynamic headlight range control - coming-home/leaving-home function)
- City Assistance Package in conjunction with Business Package (includes a selection of assistance systems specifically for city traffic - parking aid plus - rear view camera - lane change warning - Audi Pre sense basic - Audi Pre sense rear - exit warning and rear cross traffic assistant)
- Business package (MMI navigation plus with MMI touch (including driver information system with color display) - Audi phone box - 3-spoke leather steering wheel with multifunction plus - Heated front seats - Frameless, automatically dimming interior mirror - Electrically adjustable, heated, and folding exterior mirrors with automatic dimming on both sides - Rear parking aid - High beam assistant - Manual sunblind for the rear door windows)
- Seat covers in fabric system (seat center panels in fabric system black or black-red - seat side bolsters, thigh support, headrests in plain black fabric)
- Driver information system with color display (with high-resolution 7" color display - display contents: speed, time, mileage, outside temperature, fuel warning with remaining range, gear shift recommendation, current radio station or music track, radio and media lists, phone menu (in conjunction with multifunction steering wheel), navigation information (if available). On-board computer with short- and long-term memory - including break recommendation)
- Hold Assist (holds the vehicle for an unlimited period of time after stopping on typical uphill and downhill gradients. The system is activated at the touch of a button and allows the driver to pull away comfortably.)
- Comfort center armrest in the front (adjustable in inclination and longitudinally movable or completely foldable)
- Convenience key with sensor-controlled trunk release including electrically operated trunk lid opening/closing (including visual differentiation on the top and bottom of the key; access authorization system. The vehicle key only needs to be carried with you; the vehicle can be locked and unlocked from the outside via sensors on all door handles. The trunk lid can also be opened when the vehicle is locked. Additionally, a foot gesture (kick motion) below the rear bumper unlocks the trunk lid and allows it to swing open automatically.)
- Steering wheel: Leather-wrapped 3-spoke steering wheel with multifunction plus (The steering wheel impresses with its high-quality appearance and aluminum trim and fits comfortably in the hand. The height and reach of the steering wheel are manually adjustable. For convenient operation of the extensive standard and optional infotainment features, the steering wheel is equipped with 12 multifunction buttons. It also features shift paddles for manual gear changes with automatic transmissions.)
- Tour assistance package in conjunction with Business (adaptive cruise control including Stop&Go function - traffic jam assistant - predictive efficiency assistant - Audi pre sense city (standard) - Audi pre sense front - evasive maneuver assistant - left turn assistant - camera-based traffic sign recognition - high beam assistant - Audi active lane assist)
- Wheel: Deselect rolling resistance-optimized tires, removal of speed limit (18 inches) (tires 245/40 R 18 93Y)
- Wheel: Audi new car tire warranty (36 months from vehicle handover to the first customer)
- Wheel: light alloy wheels, 10-spoke V (size 8 JX 18 with tires 245/40 R 18)
- Radio accessories: Audi sound system (10 speakers including center speaker and subwoofer - 6-channel amplifier - total output of 180 watts)
- Seats: 4-way lumbar support (electrically adjustable, horizontally and vertically)



- Front seat heating (heats seat and backrest center panels; with leather upholstery, sports seats, and S-sport seats, also seat side bolsters - individually adjustable in multiple stages for driver and passenger side using the climate control panel)
- Lane Departure Warning (helps prevent unintentional lane departure within system limits. If the system is activated and ready, and the driver has not activated the turn signal, the Lane Departure Warning helps prevent crossing detected lane markings by correcting the steering. An additional steering wheel vibration can be adjusted upon driver request. Functional range from approximately 60 to a maximum of 250 km/h.)
- Front sports seats (with manual adjustment of seat height, seat fore/aft position, seat angle, backrest angle, headrest and belt height; with pronounced seat side bolsters for better lateral support in curves, extendable thigh support)
- Telephone: Audi smartphone interface in conjunction with MMI navigation plus with MMI touch (The Audi smartphone interface (Android Auto and Apple CarPlay) connects your smartphone to your Audi and seamlessly displays your smartphone content directly on the MMI display. Navigation, telephony, music, and selected third-party apps can be conveniently controlled via the MMI touch display and voice control. The connection can be established either via a suitable USB cable or wirelessly.)

Brief expert findings

Documents submitted	At the time of the inspection, the registration certificate Part 2 (letter) was available, but the registration certificate Part 1 (certificate) was not. (Copy)
VIN comparison	The vehicle identification number (VIN) was read from the vehicle and its conformity with the submitted documents was verified during the inspection by the undersigned.
Inspection	The inspection conditions were sufficient for the assessment of the vehicle. Lifting equipment and a pit were available for examining the vehicle.
Test drive	No test drive/maneuvering was carried out during the inspection of the vehicle.
Engine function test	An engine test run was performed.

Value reducing factors

No.	Component group	Description
1	Trim / covers	Floor mats (VL) - Damaged - Replace
2	Wing mirror - right side	Mirror housing - Scratch(es) - Loss in value
3	Door - front left side	Door edge - Scratch(es) - Smart repair
4	Side panel - rear left side	Side panel - dent(s) - Smart repair
5	Door - front right side	Door - Scratch(es) - Smart repair
6	Wing mirror - left side	Wing mirror - Damaged - Replace
7	Roof	Roof (Anätzung) - Paint defect - Repair and paint
8	Bonnet	Bonnet - Dent / paintcoat damage - Repair and paint
9	Rear bumper	Rear bumper (mit Spoiler und Rückstrahler) - Damaged - repair according to calculation

Wear and tear

No.	Component group	Description
1	Instrument panel	Instrument panel - Scratch(es) - No deduction
2	Trim / covers	Boot lid - interior trim - Scratch(es) - No deduction
3	Vehicle glazing	Windscreen - Stone chips - No deduction
4	Headlight	Headlight - left side - Stone chips - No deduction
5	Headlight	Headlight - right side - Stone chips - No deduction
6	Front bumper	Front bumper - Stone chips - No deduction
7	Wheel / tyres	Alloy rim - front right side - Scratch(es) - No deduction

The vehicle shows signs of wear commensurate with its age and use.



Order/Scope of order

The order was placed to prepare a sales report for the vehicle described. This includes the following:

- Description of core relevant information about the vehicle
- Documentation of equipment features
(*Delivery by third-party service providers*)
- Documentation of damage, defects, missing parts
- Documentation of previous damage, unrepaired previous damage, repainting
- a brief visual or functional inspection of the equipment details if possible.
(*Functional tests of driver assistance systems are not included in the scope of services!*)
- a photo documentation of the vehicle

Basis for the order

This product is based on the Alphabet Fuhrpark GmbH guidelines for vehicle returns and valuations. The expert makes the explicit findings in each individual case objectively within the framework of the specified standards based on his or her own expertise.

The vehicle inspection takes place in a disassembled state.

Damage or defects that can only be detected during disassembly/diagnosis work or through advanced knowledge remain within the scope of the prognosis risk. An extended risk exists for concealed defects caused by fraudulent deception and not identifiable by the expert.

Damage or defects resulting from normal use or wear and tear of the vehicle will be accepted according to the applicable standard.

There was no explicit identification or monetary consideration of the expected features within the product.

Features which in their nature and severity slightly exceed normal use but do not constitute unacceptable damage will be documented and identified under signs of use if necessary.

Damage or defects which, according to the underlying standard, can no longer be attributed to normal use or wear and tear are listed in the product under "Depreciating Factors".

Depending on the product specification, a monetary ID can be provided. If this takes place, the costs can be 100% d or pro rata depending on the vehicle's age and mileage.

Previous damages

Apparently, no repaired previous damage could be found on the vehicle.

Comments

Die beigefügte Reparaturkostenkalkulation wurde nach bestem Wissen und Gewissen unter eingeschränkten Besichtigungsbedingung im demontagefreien Zustand erstellt. Es können aufgrund verdeckter Beschädigung, Mehrkosten und somit Abweichung der für die Stoßstange ausgewiesenen Reparaturkosten nicht ausgeschlossen werden.



Figure 1: Diagonal front (left)



Figure 2: Diagonal front (right)



Figure 3: Diagonal rear (left)



Figure 4: Diagonal rear (right)



Figure 5: Interior - front



Figure 6: Interior - rear



Figure 7: Instrument cluster



Figure 8: Instrument panel



Figure 9: interior 360° view



Figure 10: Cargo area

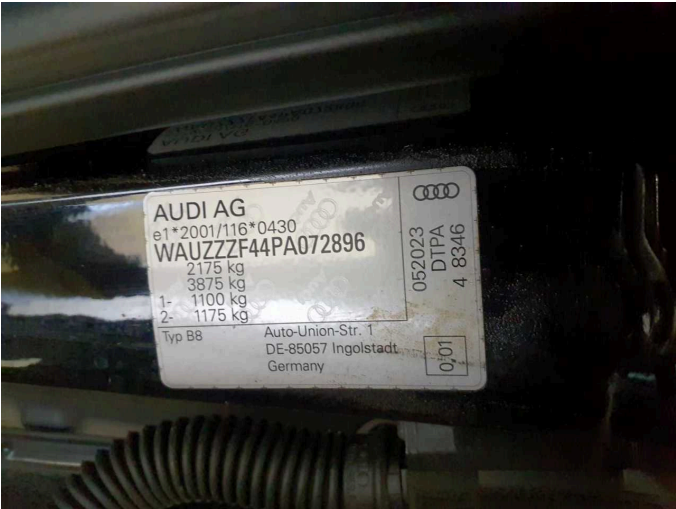


Figure 11: VIN



Figure 12: Mounted tyres

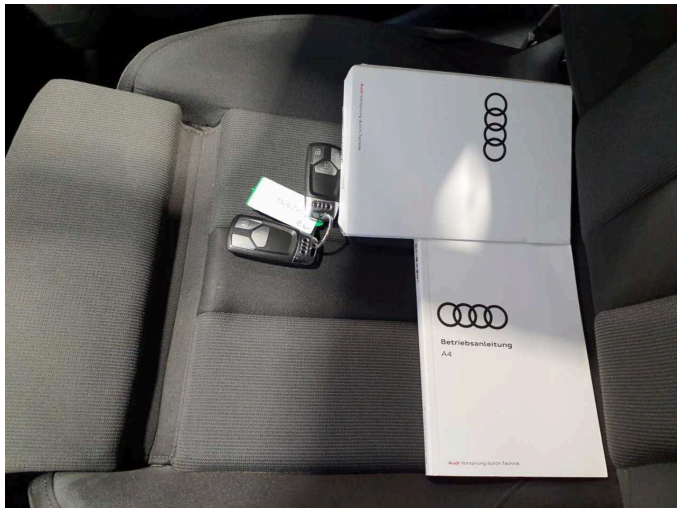


Figure 13: Documents



Figure 14: Navigation



Figure 15: Misc.

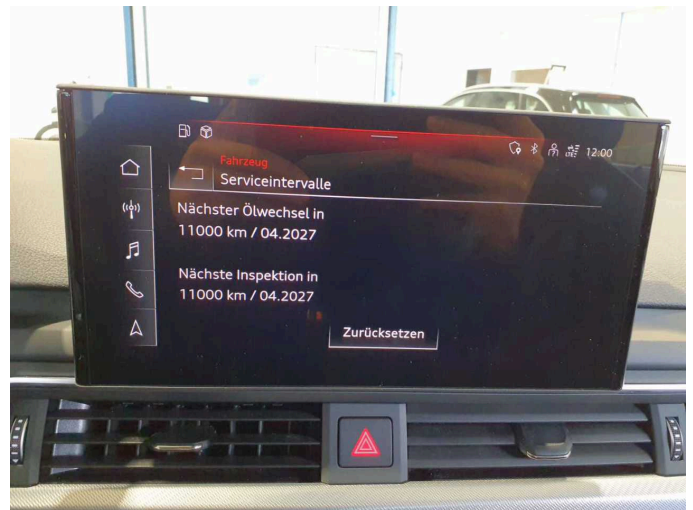


Figure 16: Misc.



Figure 17: Misc.



Figure 18: Misc.



Figure 19: Misc.



Figure 20: Misc.



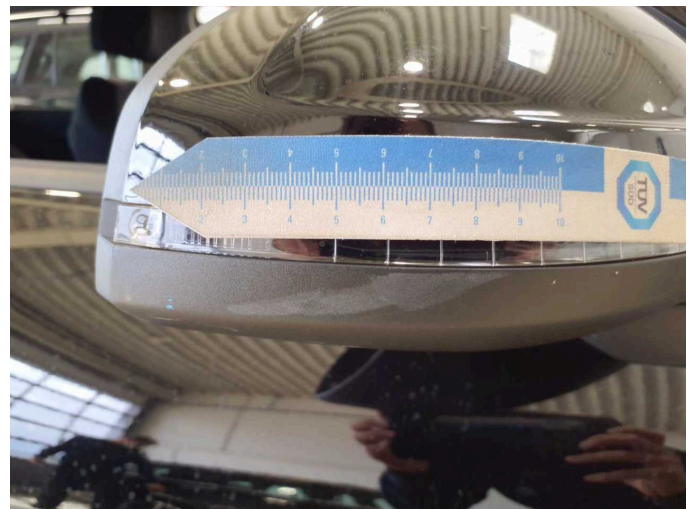
Damage 1: Trim / covers: Floor mats (VL) - Damaged - Replace



Damage 1: Trim / covers: Floor mats (VL) - Damaged - Replace



Damage 2: Wing mirror - right side: Mirror housing - Scratch(es) - Loss in value



Damage 2: Wing mirror - right side: Mirror housing - Scratch(es) - Loss in value



Damage 3: Door - front left side: Door edge - Scratch(es) - Smart repair



Damage 3: Door - front left side: Door edge - Scratch(es) - Smart repair



Damage 3: Door - front left side: Door edge - Scratch(es) - Smart repair



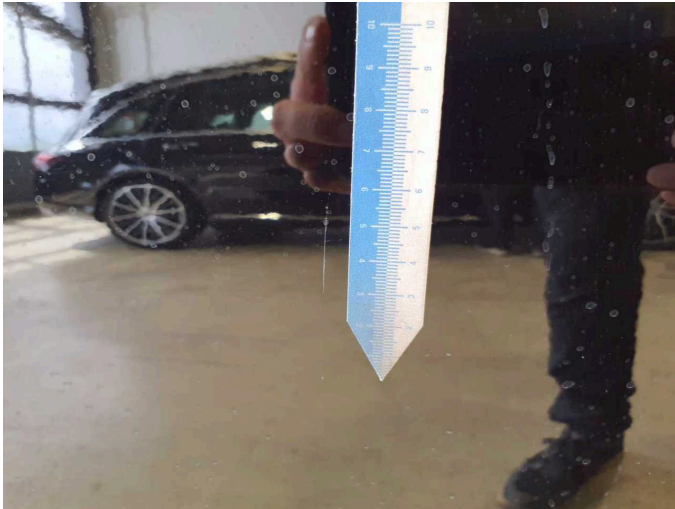
Damage 4: Side panel - rear left side: Side panel - dent(s) - Smart repair



Damage 4: Side panel - rear left side: Side panel - dent(s) - Smart repair



Damage 5: Door - front right side: Door - Scratch(es) - Smart repair



Damage 5: Door - front right side: Door - Scratch(es) - Smart repair



Damage 6: Wing mirror - left side: Wing mirror - Damaged - Replace



Damage 6: Wing mirror - left side: Wing mirror - Damaged - Replace



Damage 6: Wing mirror - left side: Wing mirror - Damaged - Replace



Damage 7: Roof: Roof (Anätzung) - Paint defect - Repair and paint



Damage 7: Roof: Roof (Anätzung) - Paint defect - Repair and paint



Damage 8: Bonnet: Bonnet - Dent / paintcoat damage - Repair and paint



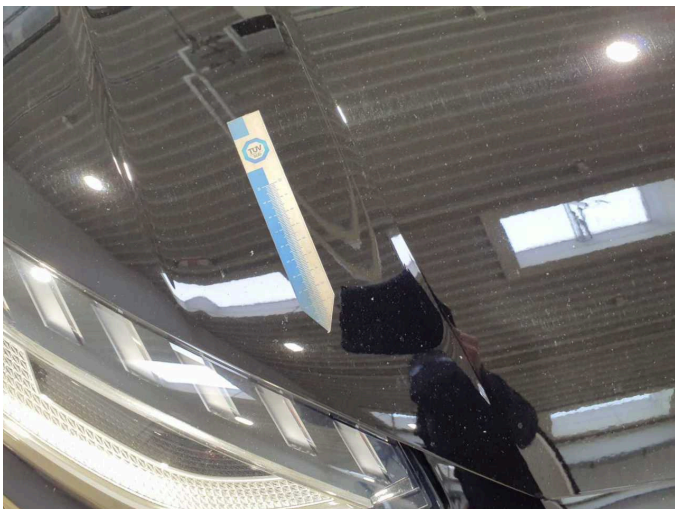
Damage 8: Bonnet: Bonnet - Dent / paintcoat damage - Repair and paint



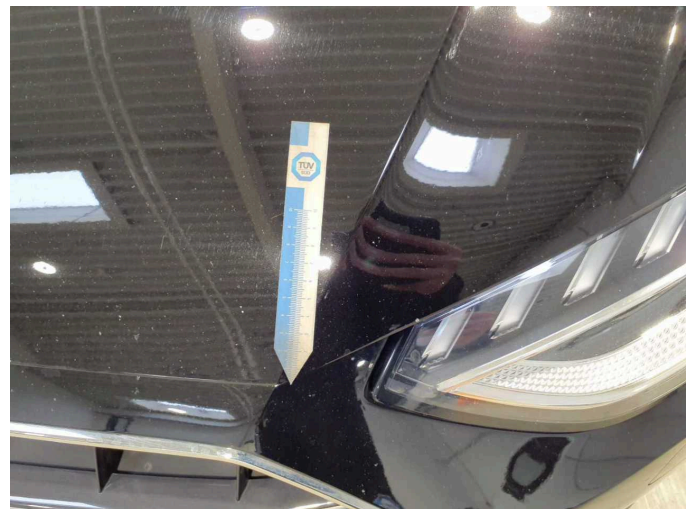
Damage 8: Bonnet: Bonnet - Dent / paintcoat damage - Repair and paint



Damage 8: Bonnet: Bonnet - Dent / paintcoat damage - Repair and paint



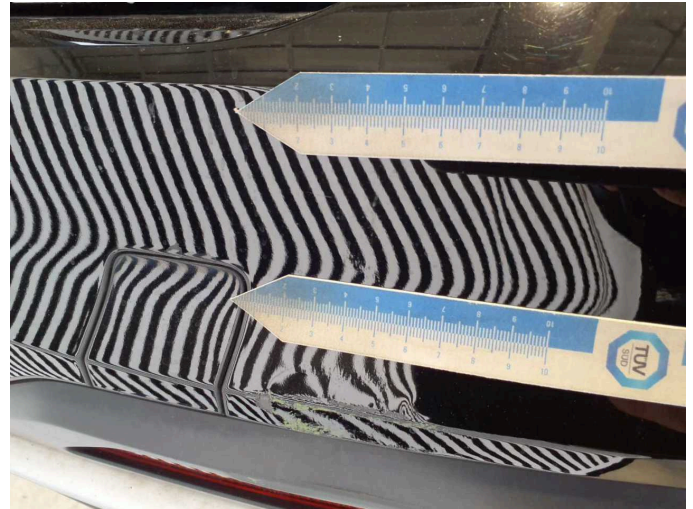
Damage 8: Bonnet: Bonnet - Dent / paintcoat damage - Repair and paint



Damage 8: Bonnet: Bonnet - Dent / paintcoat damage - Repair and paint



Damage 9: Rear bumper: Rear bumper (mit Spoiler und Rückstrahler) - Damaged - repair according to calculation



Damage 9: Rear bumper: Rear bumper (mit Spoiler und Rückstrahler) - Damaged - repair according to calculation



Damage 9: Rear bumper: Rear bumper (mit Spoiler und Rückstrahler) - Damaged - repair according to calculation



Damage 9: Rear bumper: Rear bumper (mit Spoiler und Rückstrahler) - Damaged - repair according to calculation



Damage 9: Rear bumper: Rear bumper (mit Spoiler und Rückstrahler) - Damaged - repair according to calculation



Damage 9: Rear bumper: Rear bumper (mit Spoiler und Rückstrahler) - Damaged - repair according to calculation



Wartungshistorie

(gemäß Auftraggeber Informationen)

Fahrgestellnummer: WAUZZZF44PA072896
Hersteller / Modell: AUDI AUDI A4 Avant 40 TDI S tronic advanced

Datum	KM-Stand	Beschreibung
30.04.2025	141.022	Bremsbelagfühler ern; Bremse Sonstiges; Bremsflüssigkeit; Bremsflüssigkeit ern; Bremsklötze hinten; Bremsklötze vorne; Bremsscheiben hinten; Bremsscheiben vorne; Motoröl b. Wartung; Ölfilter ern; Regelwartungsdienst; Wartung Sonstiges
03.12.2024	112.544	Getriebeöl ern/prüfen; Kraftstofffilter ern; Motoröl b. Wartung; Ölfilter ern; Regelwartungsdienst; Reparatur Sonstiges; Wartung Sonstiges
30.07.2024	85.480	Luftfiltereinsatz ern; Motoröl b. Wartung; Ölfilter ern; Regelwartungsdienst; Wartung Sonstiges
30.03.2024	56.825	Bremsbelagfühler ern; Bremse Sonstiges; Bremsklötze hinten; Bremsklötze vorne; Bremsscheiben vorne; Getriebeöl ern/prüfen; Kraftstofffilter ern; Motoröl b. Wartung; Ölfilter ern; Regelwartungsdienst; Reparatur Sonstiges; Wartung Sonstiges
21.11.2023	28.109	Motoröl b. Wartung; Ölfilter ern; Regelwartungsdienst; Wartung Sonstiges