



AUDI A4

A4 Avant 35 TDI S tronic

VIN NO WAUZZZF41NA039495
Registration Number 41NA039495



| | | | |
|--------------|----------------------|-------------------------|--------------------------|
| MOT Date | Number of Owners | Number of Keys | Odometer Reading |
| - | 1 | 2 | 73452 km |
| Last Service | Last Service Mileage | First Registration Date | Country First Registered |
| - | - | 2022-06-01 | - |

Inspection Report Summary

| | | | |
|-------------------------|---------------------|----------------|-----------------|
| Customer | BCA Online | Report Number | P20250815142322 |
| Inspection Date / Place | 2025-08-15 / Extern | Cosmetic Grade | 2 |

Vehicle Summary

| | | | |
|--------------------|-----------------------|--------------------|------------|
| Vehicle Condition | Runner | VAT Type | Qualifying |
| Fuel Type | Diesel | Road Worthy | Yes |
| Colour | Black | Engine Size (cc) | 1968 |
| Engine Size | 2.0 | No of Doors | 5 |
| Body Type | Stationwagon / Estate | Drive Train | Front |
| Seat Colour | | No of Seats | 5 |
| Seat Covering Name | Schwarz | Seat Covering | Cloth |
| Charging Cables | | WLTP CO2 Emissions | |
| Gearbox Type | Automatic | | |

Vehicle History & Documents

| | | | |
|------------------------|---|----------------------|----|
| Service Book Available | - | Next Service Mileage | km |
| Previous Usage | | Imported | No |
| Manufacturer Warrenty | | | |







Equipment

| | | | |
|-------------------------------|-----------------------|-----------------------------------|-------------------------------|
| Trip Computer | Adaptivecruisecontrol | Alloys wheels | Bluetooth telephone interface |
| Diesel particulate filter | Digitaldashboard | Heated wing mirrors | Remote central locking |
| Satellite navigation | Stability control | Electrically folding wing mirrors | Leather steering wheel |
| Radio | Rear parking sensors | USB Socket | Airbag Status |
| Anti-lock braking | Cruise control | Digital Radio | Front parking sensors |
| Remote adjusting wing mirrors | Roof rails | Split folding rear seats | Central locking |
| Electrictailgate | LED Headlamps | Rain sensitive windscreen wipers | |

Equipment Details

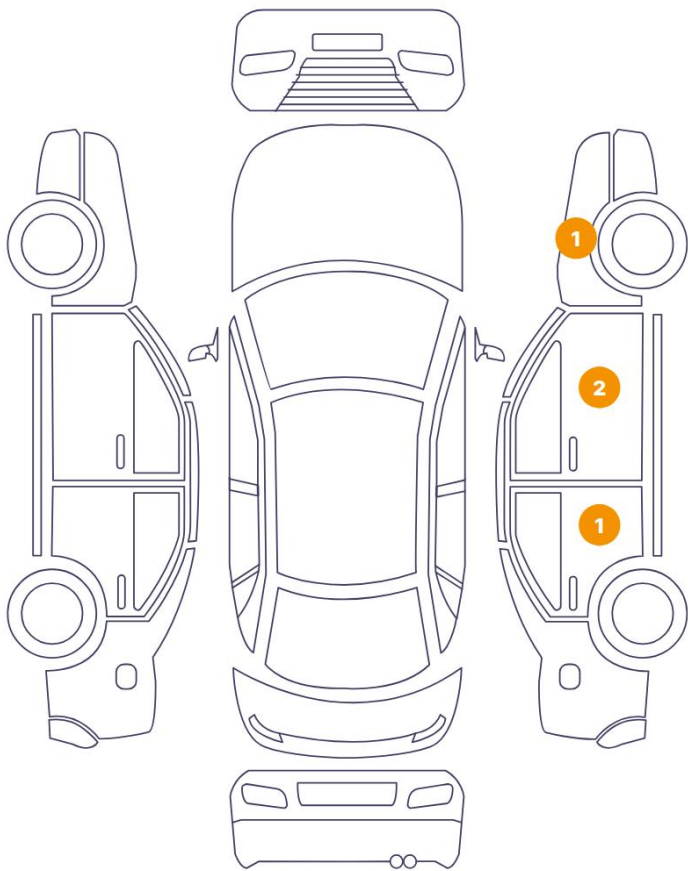
| | | | |
|------------------|----------------------------|------------------|----|
| Air Conditioning | Three Zone Climate Control | Alloy Wheel Size | 17 |
| Seat Heating | Front | | |

Wheels & Tyres

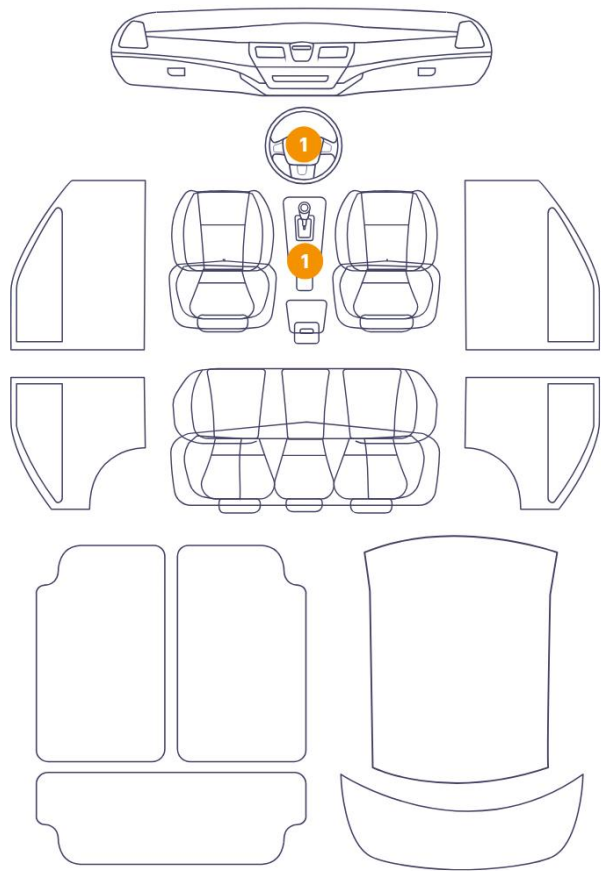
| | | | |
|------------------------|---|-----------------------|---|
| Right Front Tyre Depth | 6 | Left Front Tyre Depth | 6 |
| Right Rear Tyre Depth | 4 | Left Rear Tyre Depth | 4 |

Cosmetic Damage

4 Schäden



2 Schäden



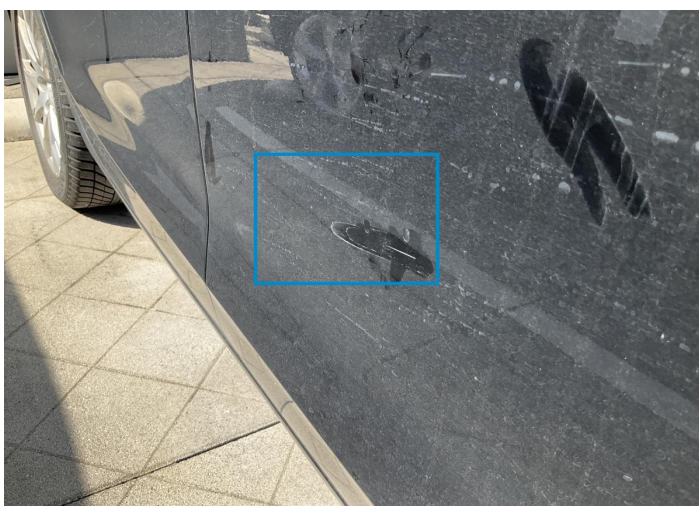
| Component | | Damage | Comments |
|-----------|------------------------|-------------------------|----------|
| 1 | Fender / Front Right | Paint / Scratch / Scuff | |
| 2 | Mirror / Front Right | Paint / Scratch / Scuff | |
| 3 | Door / Front Right | Paint / Scratch / Scuff | |
| 4 | Gear Knob | Interior / Worn - out | |
| 5 | Steering Wheel / Front | Interior / Worn - out | |
| 6 | Door / Back Right | Bodywork / Dent / Dent | |



1. Fender / Front Right
Paint / Scratch / Scuff -



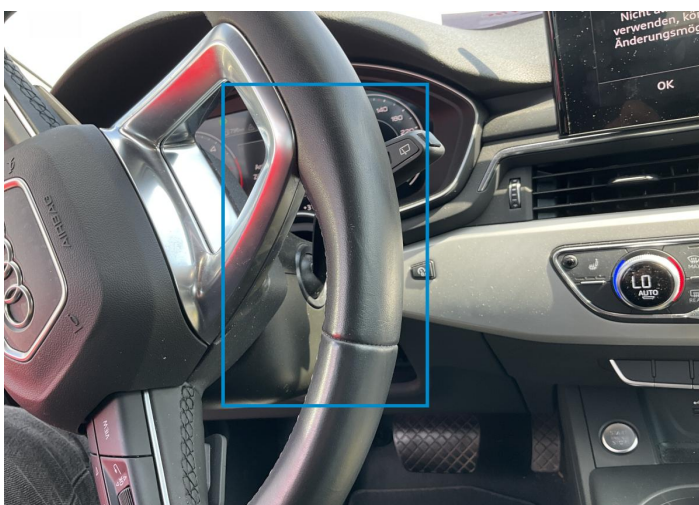
2. Mirror / Front Right
Paint / Scratch / Scuff -



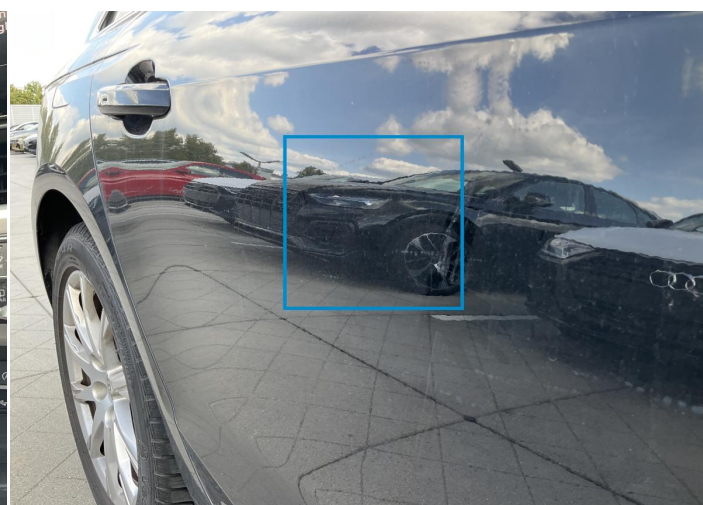
3. Door / Front Right
Paint / Scratch / Scuff -



4. Gear Knob
Interior / Worn - out -



5. Steering Wheel / Front
Interior / Worn - out -



6. Door / Back Right
Bodywork / Dent / Dent -

Mechanical Condition

Equipments Test

| | | | |
|---------------------------------------|---|-------------------------------|---|
| Central Locking | ✓ | Electric Windows | ✓ |
| Audio Equipment | ✓ | Main & Spare Keys Functioning | ✓ |
| Parking Sensors / Cameras Functioning | ✓ | Other Equipments | ✓ |

Control Lights

| | | | |
|---------------------------------|---|--|---|
| ABS Warning Light | ✓ | ESP Fault/Traction Control Malfunction Light | ✓ |
| Diesel Particulate Filter Light | ✓ | Airbag Warning Light | ✓ |
| Oil Pressure Warning Light | ✓ | Brake Warning Light | ✓ |
| Power Steering Warning Light | ✓ | Alternator / Battery | ✓ |
| No Dashboard Lights | ✓ | Display Defect | ✓ |
| Service Light | ! | Tire Pressure Monitoring System | ✓ |

Engine

| | | | |
|---------------------|---|---------------------|---|
| Engine Status / EML | ✓ | Engine Leak Visible | ✓ |
| Engine Starts | ✓ | | |

Gearbox

| | |
|----------|---|
| Gear Box | ✓ |
|----------|---|

Levels

| | | | |
|--------------|---|---------------|---|
| Brakes Fluid | ✓ | Coolant Fluid | ✓ |
|--------------|---|---------------|---|

Test Drive Inspection

| Steering Wheel | | | |
|--|---|---|---|
| Steering Noise / Anomaly | | ✓ | |
| Engine | | | |
| Engine Noise | ✓ | The Gears Scratch / Skip / Abnormal Operation | ✓ |
| Fume Quantity | ✓ | Power Loss | ✓ |
| Brake | | | |
| Brake System Anomaly | | ✓ | |
| General | | | |
| Test Driven Status | | ✓ | |
| ✓ <i>No troubles detected, good condition or correct tests, according to vehicle age and mileage</i> | | | |
| ! <i>Damages or malfunction detected that requires repairs by the buyer</i> | | | |
| NA <i>Not applicable</i> | | | |
| = <i>Not tested</i> | | | |

Disclaimer

Please also note the "UserGuide condition report", which shows the scope of the vehicle description.

[User Guide](#)