



Expertise

Protocol number: 40978087  
Order No. / Reference: 24974359  
Inspection date: 5 Aug 2025

Manufacturer: Audi

Model: A4 Avant 35 TDI S tronic

VIN: WAUZZZF40LA079662



Vehicle details	
Manufacturer / Type / Model / Equipment	
Audi A4 Avant 35 TDI S tronic	
Vehicle Identification number	WAUZZZF40LA079662
Mileage (Read)	77,135 km
First registration	3 Aug 2020
Number of holders	1
Power / Engine displacement	120 kw / 1,968 ccm
Fuel type / Cylinder	Hybrid Diesel / E / 4
Gearbox / Number of gears	Automatic / 7
Type of drive	Front drive
Type of vehicle	Station wagon
Colour / colour code	Mythossschwarz Metallic
Doors / Seats	5 / 5
Upholstery type	Cloth
Colour of upholstery	Black



Vehicle details

Maintenance booklet / proof	digital proof / complete	Next maintenance in	8,500 km
Last maintenance on / at	01/2024 at 57,854 km		
Key is / should be	2 / 2	FZG documents	
		Letter No.	FU578938
Previous damage / Accident	None detectable	Repainting	None detectable
Inspection conditions	Sufficient	Lifting equipment / pit	yes
Test drive	Not performed	Engine function test	Performed
Manufacturer key number/ type code number	0588 / BPK 00131		
Permitted total weight	2,165 kg	Empty weight	

Tyres

Mounted tyres

#	Tyre size	Type of tyre	Manufacturer	Tread depth
1)	225/50 R17 94H	Summer tyres on Light alloy	Continental	5mm / 5mm
2)	225/50 R17 94H	Summer tyres on Light alloy	Continental	5mm / 5mm

Additional tyres

#	Tyre size	Type of tyre	Manufacturer	Tread depth
1)	205/60 R16 96H	Winter tyres on Light alloy	Pirelli	6mm / 6mm
2)	205/60 R16 96H	Winter tyres on Light alloy	Pirelli	6mm / 6mm

Replacement

Type	Tyre size	Type of tyre	Manufacturer	Tread depth
	Tirefit	Expiration date 06/2024		

Legend: Tread depth information for tires on the left is in the first place, for tires on the right is in the second place on the axle in the direction of travel

## Equipment

### Standard equipment

- |   |  |
|---|--|
| <ul style="list-style-type: none"> <li>• AdBlue tank (12 liters)</li> <li>• Airbag: Front side airbags and head airbag system</li> <li>• Anti-lock braking system (ABS)</li> <li>• Audi connect emergency call &amp; service with Audi connect Remote &amp; Control</li> <li>• Exterior mirror housings in body color</li> <li>• Brake light, third raised</li> <li>• Roof rails black</li> <li>• Diesel particulate filter (DPF)</li> <li>• Door sills with aluminum inserts at the front</li> <li>• Electronic differential lock (EDS)</li> <li>• Driver Information System</li> <li>• Electric window lifter</li> <li>• Radio key, without SafeLock</li> <li>• Cruise control including speed limiter</li> <li>• Rear window wiper</li> <li>• Interior lighting</li> <li>• Parental controls</li> <li>• Automatic air conditioning</li> <li>• trunk floor mat</li> <li>• Load compartment cover manually</li> <li>• LED headlights</li> <li>• Steering column, manually height and axially adjustable</li> <li>• Light/rain sensor</li> <li>• Front center armrest</li> <li>• Radio accessories: 8 speakers (passive) front and rear</li> <li>• Tire pressure monitoring display</li> <li>• Power steering, electromechanical</li> <li>• Seats: Standard seats in the front</li> <li>• Seats: Front seats manually adjustable</li> <li>• Bandage material with warning triangle</li> <li>• Glazing: Heat-insulating glazing tinted green</li> <li>• Turning loading floor</li> </ul> | <ul style="list-style-type: none"> <li>• Airbag for driver and front passenger</li> <li>• Accent surfaces matt black</li> <li>• Traction control (ASR)</li> <li>• Audi pre sense city</li> <li>• Exterior mirrors electrically adjustable and heated</li> <li>• Vehicle tool kit</li> <li>• Fabric headliner</li> <li>• Decorative inlays diamond lacquer silver grey</li> <li>• tachometer</li> <li>• Electromechanical parking brake</li> <li>• Electronic Stabilization Control (ESC)</li> <li>• Chassis: Standard chassis</li> <li>• Window sill strips in black (rubber)</li> <li>• Floor mats front and rear</li> <li>• Transmission: S tronic 7-speed</li> <li>• Top speed limited to 210 km/h</li> <li>• Dimmable interior mirror</li> <li>• ISOFIX and Top Tether child seat attachment for the outer rear seats</li> <li>• Headrests (5)</li> <li>• LED rear lights</li> <li>• Steering wheel: Leather steering wheel in 3-spoke design with multifunction</li> <li>• Mild hybrid</li> <li>• Non-smoking version</li> <li>• Radio accessories: Digital radio reception (DAB)</li> <li>• Tire repair kit</li> <li>• Seat covers in fabric index</li> <li>• Seats: Folding rear seat backrest</li> <li>• Start-stop system</li> <li>• Glazing: Windscreen in acoustic glazing</li> <li>• Electronic immobilizer</li> <li>• Central locking "Keyless-Go" without safe security</li> </ul> |
|---|--|

### Extra equipment

- |   |  |
|---|--|
| <ul style="list-style-type: none"> <li>• AdBlue tank (24 liters) (larger tank for AdBlue solution to reduce nitrogen oxides in the exhaust gas using the SCR system)</li> <li>• Audi pre sense basic (initiates preventive protective measures for the occupants within the system's limits by networking and synchronizing various vehicle systems. In unstable driving conditions, the front seat belts are electrically tensioned. The windows close as needed. The hazard warning lights are activated to warn following traffic.)</li> </ul> | <ul style="list-style-type: none"> <li>• Audi connect Navigation &amp; Infotainment (Online Points of Interest - Online Traffic Information - Hazard Information - Online Traffic Sign Information - Weather Information - Calendar Access - Wi-Fi Hotspot - Online News - Navigation with Google Earth - Online Search for Navigation Destinations - Online Voice Input - Highly Detailed 3D City Map - On-Street Parking - Online Radio - Hybrid Radio - Traffic Light Information - Personal Profiles)</li> </ul> |
|---|--|



- Business package (MMI navigation plus with MMI touch (including driver information system with color display) - Audi phone box - 3-spoke leather steering wheel with multifunction plus - Heated front seats - Frameless, automatically dimming interior mirror - Electrically adjustable, heated, and folding exterior mirrors with automatic dimming on both sides - Rear parking aid - High beam assistant - Manual sunblind for the rear door windows)
- Comfort center armrest in the front (adjustable in inclination and longitudinally movable)
- Convenience key, without Safelock (including optical differentiation on the top and bottom of the key. With the electronic access and drive-away authorization system, you can open all doors and the trunk lid of your vehicle without a key and lock them again using the sensors on the door handles. The convenience key simply needs to be carried with you. The engine is started and stopped using the engine start/stop button.)
- Front seat heating (heats seat and backrest center panels; with leather upholstery, sports seats, and S-sport seats, also seat side bolsters - individually adjustable in multiple stages for driver and passenger side using the climate control panel)
- High Beam Assistant (within the system's limits, it automatically detects the headlights of oncoming traffic, the taillights of other road users, and light sources in built-up areas. Depending on the traffic situation, the high beam is automatically switched on or off. The system thus improves the driver's visibility and increases comfort.)
- Parking Aid Plus (Acoustic and visual parking aids at the front and rear assist with parking and maneuvering. With selective, visual display of the distance to detected objects on the MMI display, depending on the current steering angle and direction of travel. The virtual lane indicator also offers lateral guidance lines that are calculated in advance based on the currently selected steering angle. Measurement is performed by ultrasonic sensors discreetly integrated into the bumpers.)
- Tour assistance package in conjunction with Business package (adaptive cruise control including Stop&Go function - traffic jam assistant - predictive efficiency assistant - Audi pre sense city (standard) - Audi pre sense front - evasive maneuver assistant - left turn assistant - camera-based traffic sign recognition - high beam assistant - Audi active lane assist)
- Driver information system with color display (with high-resolution 7" color display - display contents: speed, time, mileage, outside temperature, fuel warning with remaining range, gear shift recommendation, current radio station or music track, radio and media lists, phone menu (in conjunction with multifunction steering wheel), navigation information (if available). On-board computer with short- and long-term memory - including break recommendation)
- Electrically adjustable, heated, and foldable exterior mirrors, automatically dimming on both sides (including automatic curbside mirror function for the passenger side mirror with integrated LED indicators, including heated windshield washer nozzles. The automatic curbside mirror folds down when reverse gear is engaged, giving the driver a better view of the curb)
- Fuel tank with increased filling volume (54 l)
- Gloss package (roof frame and window channel strips in anodized aluminum)
- Luggage compartment lid, electrically opening and closing (The luggage compartment lid can be opened electrically by pressing the button on the vehicle key, in the driver's door, or the soft-touch button on the luggage compartment lid handle. Closing the luggage compartment lid is just as easy and convenient as opening it: simply press the button on the inside of the luggage compartment lid, the button in the driver's door, or the button on the vehicle key. A closing aid makes manual closing easier when necessary.)
- Paint finish: metallic
- Roof rails in aluminum (for transport, stable and aerodynamically shaped, in aluminum)
- Seats: 4-way lumbar support (electrically adjustable, horizontally and vertically)
- Steering wheel: Leather-wrapped 3-spoke steering wheel with multifunction plus (The steering wheel impresses with its high-quality appearance and aluminum trim and fits comfortably in the hand. The height and reach of the steering wheel are manually adjustable. For convenient operation of the extensive standard and optional infotainment features, the steering wheel is equipped with 12 multifunction buttons. It also features shift paddles for manual gear changes with automatic transmissions.)
- Wheel: Light alloy wheels, 10-spoke (size 7.5 J x 17 with tires 225/50 R 17 forged)
- Wheel: Winter alloy wheels 5-parallel spokes (size 7.0 J x 17 with winter tires 225/50 R 17 - snow chain compatible, maximum speed 210 km/h)

## Brief expert findings

VIN comparison	The vehicle identification number (VIN) was read and the undersigned verified that it matched the documents submitted during the inspection.
Inspection	The inspection conditions were sufficient for the assessment of the vehicle. Lifting equipment and a pit were available for examining the vehicle.
Test drive	No test drive/maneuvering was carried out during the inspection of the vehicle.
Engine function test	An engine test run was performed.



## Value reducing factors

No.	Component group	Description
1	Equipment	Tirefit filler - Expired - Replace
2	Door - rear right side	Door - dent(s) - Smooth repair work
3	Side panel - rear left side	Side panel - Dent / paintcoat damage - Smart repair
4	Wheel / tyres	Alloy rim - front right side - Scratched - Smart repair
5	2nd wheel set	1 alloy rim - Scratched - Loss in value
6	Wheel / tyres	Alloy rim - rear right side - Scratched - Loss in value
7	Side panel - rear right side	Side panel - Scratch(es) - Paint
8	Door - front left side	Door - Dent / paintcoat damage - Repair and paint
9	Door - front right side	Door - Dent / paintcoat damage - Repair and paint
10	Vehicle glazing	Windscreen - Broken / torn - repair according to calculation

## Wear and tear

No.	Component group	Description
1	Rear bumper	Rear bumper - Scratch(es) - No deduction
2	Bonnet	Bonnet - Scratch(es) - No deduction
3	Roof	Roof - Scratch(es) - No deduction
4	2nd wheel set	1 tyre - Porous / cracked - No deduction

The vehicle shows signs of wear commensurate with its age and use.

## Order/Scope of order

The order was placed to prepare a sales report for the vehicle described. This includes the following:

- Description of core relevant information about the vehicle
- Documentation of equipment features  
(*Delivery by third-party service providers*)
- Documentation of damage, defects, missing parts
- Documentation of previous damage, unrepaired previous damage, repainting
- a brief visual or functional inspection of the equipment details if possible.  
(*Functional tests of driver assistance systems are not included in the scope of services!*)
- a photo documentation of the vehicle



## Basis for the order

This product is based on the Alphabet Fuhrpark GmbH guidelines for vehicle returns and valuations. The expert makes the explicit findings in each individual case objectively within the framework of the specified standards based on his or her own expertise.

The vehicle inspection takes place in a disassembled state.

Damage or defects that can only be detected during disassembly/diagnosis work or through advanced knowledge remain within the scope of the prognosis risk. An extended risk exists for concealed defects caused by fraudulent deception and not identifiable by the expert.

Damage or defects resulting from normal use or wear and tear of the vehicle will be accepted according to the applicable standard.

There was no explicit identification or monetary consideration of the expected features within the product.

Features which in their nature and severity slightly exceed normal use but do not constitute unacceptable damage will be documented and identified under signs of use if necessary.

Damage or defects which, according to the underlying standard, can no longer be attributed to normal use or wear and tear are listed in the product under "Depreciating Factors".

Depending on the product specification, a monetary ID can be provided. If this takes place, the costs can be 100% d or pro rata depending on the vehicle's age and mileage.

## Previous damages

Apparently, no repaired previous damage could be found on the vehicle.





Figure 1: Diagonal front (left)



Figure 2: Diagonal front (right)



Figure 3: Diagonal rear (left)



Figure 4: Diagonal rear (right)



Figure 5: Interior - front



Figure 6: Interior - rear





Figure 7: Instrument cluster



Figure 8: Instrument panel



Figure 9: interior 360° view ([Online link](#))



Figure 10: Cargo area



Figure 11: VIN



Figure 12: Mounted tyres





Figure 13: Documents



Figure 14: Documents



Figure 15: Additional tyres

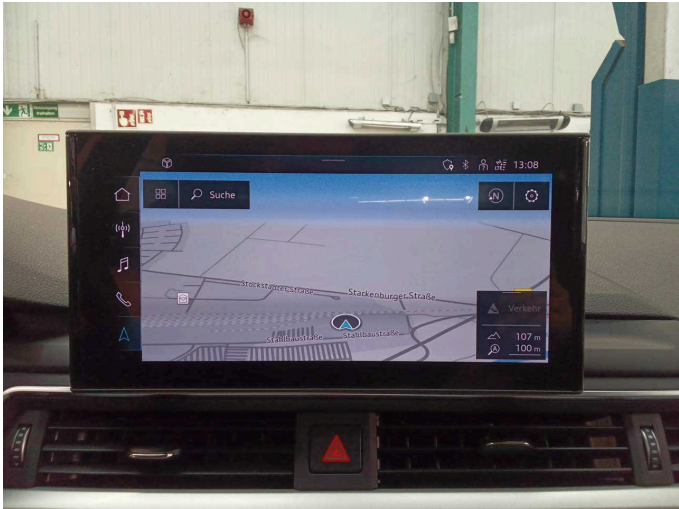


Figure 16: Navigation



Figure 17: Misc.



Figure 18: Misc.





Figure 19: Misc.

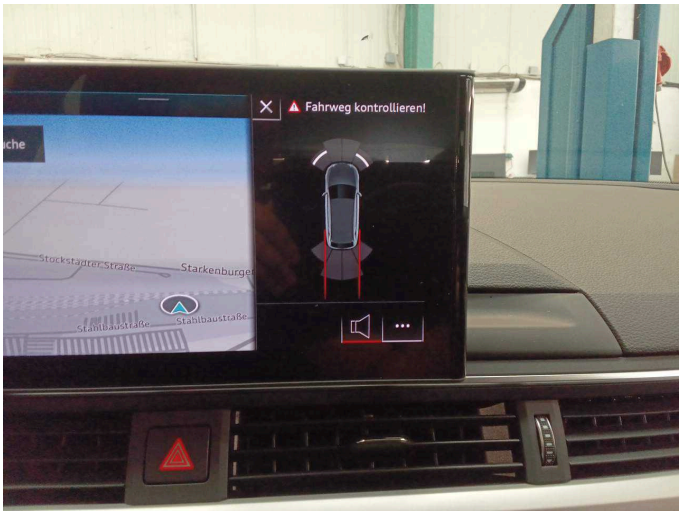


Figure 20: Misc.



Figure 21: Misc.

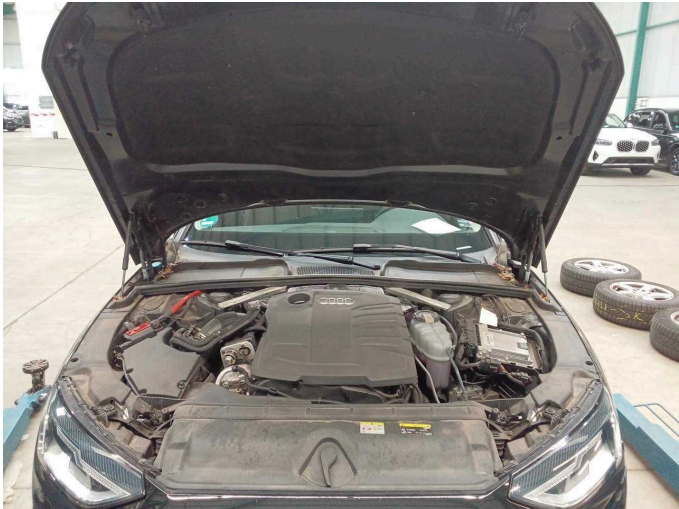


Figure 22: Misc.



Figure 23: Misc.



Figure 24: Misc.

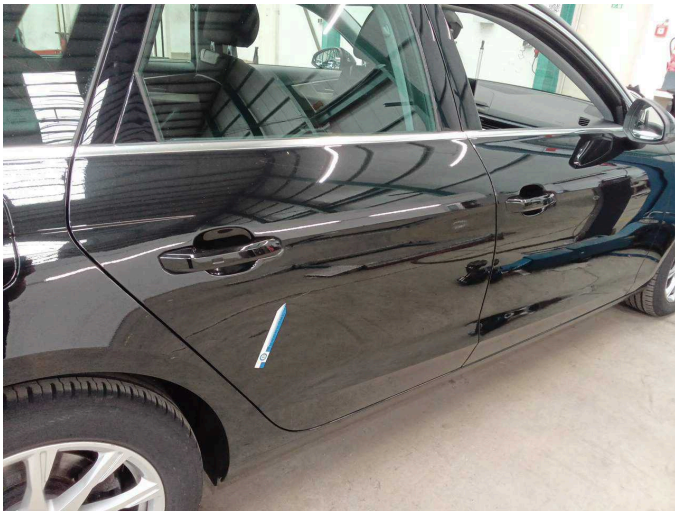




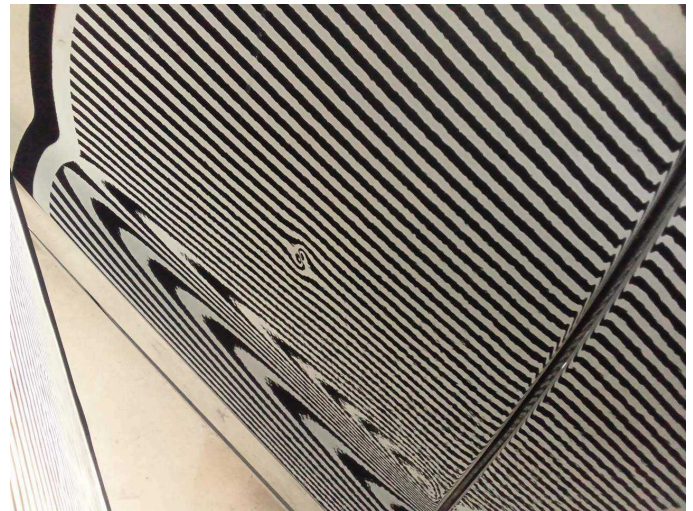
**Figure 25:** Misc.



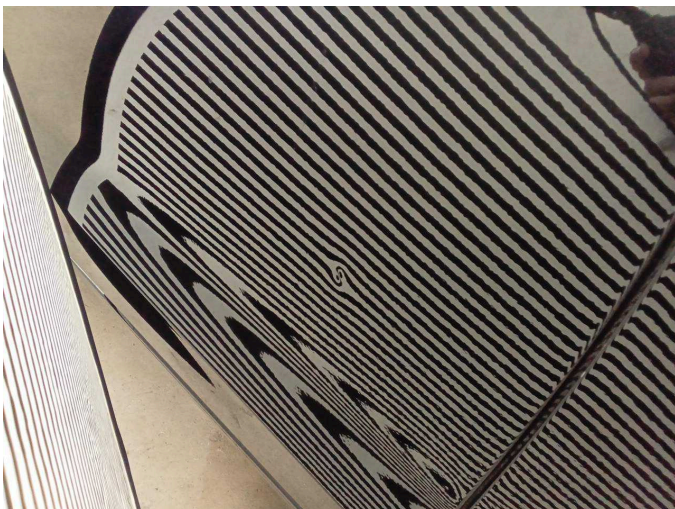
**Damage 1:** Equipment: Tirefit filler - Expired - Replace



**Damage 2:** Door - rear right side: Door - dent(s) - Smooth repair work



**Damage 2:** Door - rear right side: Door - dent(s) - Smooth repair work



**Damage 2:** Door - rear right side: Door - dent(s) - Smooth repair work



**Damage 2:** Door - rear right side: Door - dent(s) - Smooth repair work

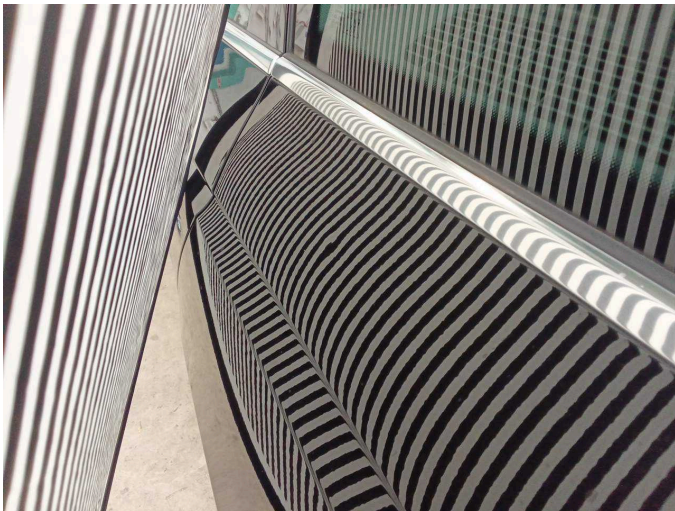




**Damage 3:** Side panel - rear left side: Side panel - Dent / paintcoat damage - Smart repair



**Damage 3:** Side panel - rear left side: Side panel - Dent / paintcoat damage - Smart repair



**Damage 3:** Side panel - rear left side: Side panel - Dent / paintcoat damage - Smart repair



**Damage 3:** Side panel - rear left side: Side panel - Dent / paintcoat damage - Smart repair



**Damage 3:** Side panel - rear left side: Side panel - Dent / paintcoat damage - Smart repair



**Damage 4:** Wheel / tyres: Alloy rim - front right side - Scratched - Smart repair





**Damage 5:** 2nd wheel set: 1 alloy rim - Scratched - Loss in value



**Damage 5:** 2nd wheel set: 1 alloy rim - Scratched - Loss in value



**Damage 6:** Wheel / tyres: Alloy rim - rear right side - Scratched - Loss in value



**Damage 6:** Wheel / tyres: Alloy rim - rear right side - Scratched - Loss in value



**Damage 6:** Wheel / tyres: Alloy rim - rear right side - Scratched - Loss in value



**Damage 7:** Side panel - rear right side: Side panel - Scratch(es) - Paint

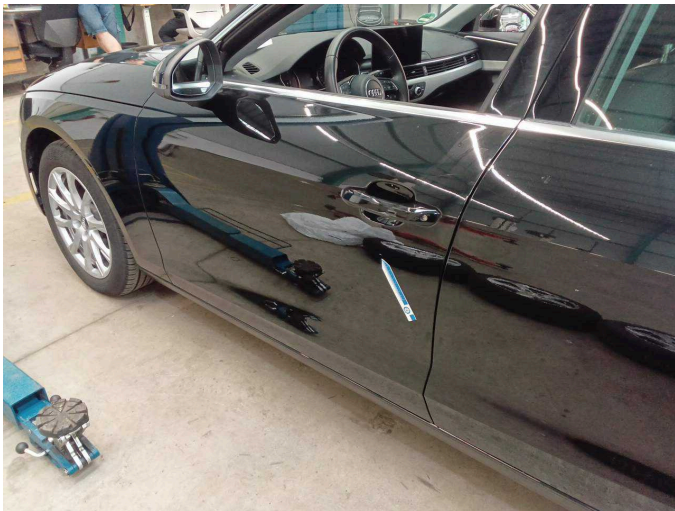




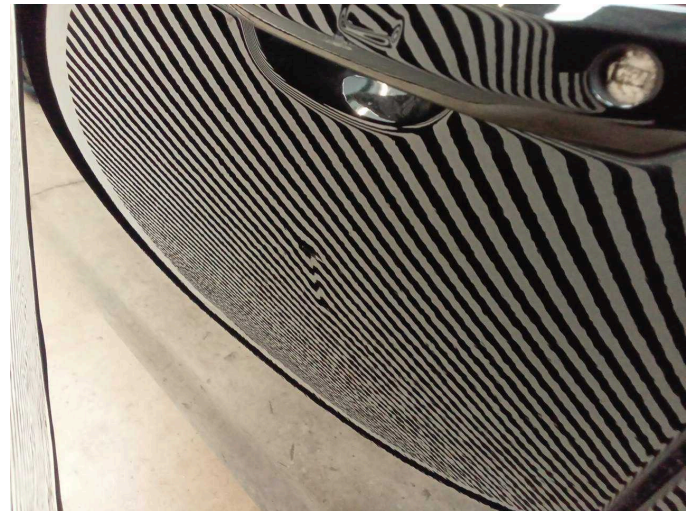
**Damage 7:** Side panel - rear right side: Side panel - Scratch(es) - Paint



**Damage 7:** Side panel - rear right side: Side panel - Scratch(es) - Paint



**Damage 8:** Door - front left side: Door - Dent / paintcoat damage - Repair and paint



**Damage 8:** Door - front left side: Door - Dent / paintcoat damage - Repair and paint



**Damage 8:** Door - front left side: Door - Dent / paintcoat damage - Repair and paint

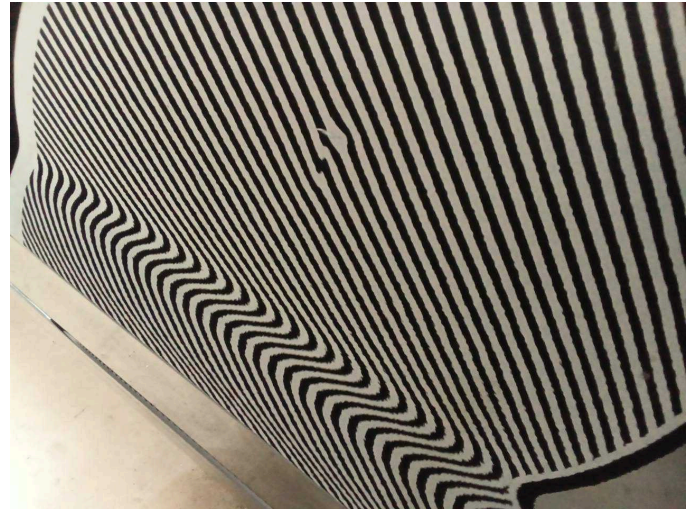


**Damage 8:** Door - front left side: Door - Dent / paintcoat damage - Repair and paint





**Damage 9:** Door - front right side: Door - Dent / paintcoat damage - Repair and paint



**Damage 9:** Door - front right side: Door - Dent / paintcoat damage - Repair and paint



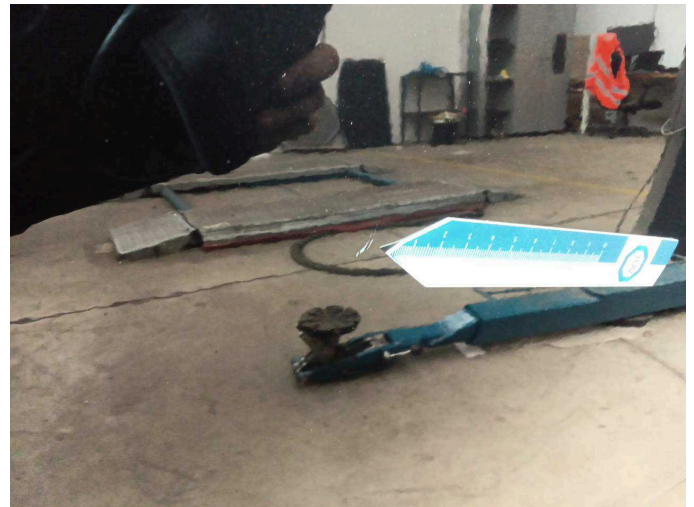
**Damage 9:** Door - front right side: Door - Dent / paintcoat damage - Repair and paint



**Damage 9:** Door - front right side: Door - Dent / paintcoat damage - Repair and paint



**Damage 9:** Door - front right side: Door - Dent / paintcoat damage - Repair and paint



**Damage 9:** Door - front right side: Door - Dent / paintcoat damage - Repair and paint





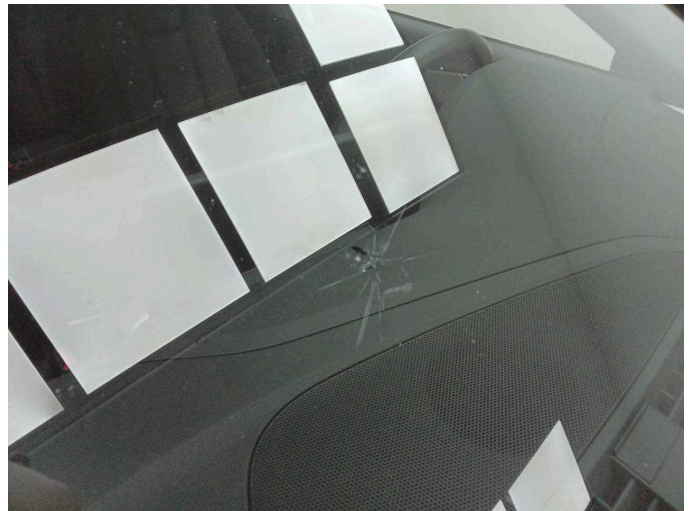
**Damage 10:** Vehicle glazing: Windscreen - Broken / torn - repair according to calculation



**Damage 10:** Vehicle glazing: Windscreen - Broken / torn - repair according to calculation



**Damage 10:** Vehicle glazing: Windscreen - Broken / torn - repair according to calculation



**Damage 10:** Vehicle glazing: Windscreen - Broken / torn - repair according to calculation



**Damage 10:** Vehicle glazing: Windscreen - Broken / torn - repair according to calculation



**Damage 10:** Vehicle glazing: Windscreen - Broken / torn - repair according to calculation



**Wear and tear 3:** Roof: Roof - Scratch(es) - No deduction



**Wear and tear 3:** Roof: Roof - Scratch(es) - No deduction





# Wartungshistorie

(gemäß Auftraggeber Informationen)

Fahrgestellnummer: WAUZZZF40LA079662  
Hersteller / Modell: AUDI AUDI A4 Avant 35 TDI S tronic

Datum	KM-Stand	Beschreibung
06.09.2024	64.461	Bremsflüssigkeit; Bremsflüssigkeit ern
17.01.2024	57.854	Bremsbelagfühler ern; Bremse Sonstiges; Bremsklötze hinten; Bremsklötze vorne; Bremsscheiben hinten; Bremsscheiben vorne; Getriebeöl ern/prüfen; Kraftstofffilter ern; Motoröl b. Wartung; Ölfilter ern; Regelwartungsdienst; Reparatur Sonstiges; Wartung Sonstiges
30.08.2023	52.932	AU
14.09.2022	40.603	Bremsflüssigkeit ern; Systemtest/Eigendiagnose
20.01.2022	30.227	Motoröl b. Wartung; Ölfilter ern; Regelwartungsdienst; Wartung Sonstiges