



Expertise

Protocol number: 41326309
Order No. / Reference: 25149914
Inspection date: 29 Aug 2025

Manufacturer: Audi

Model: A4 Avant 40 TDI quattro S tronic

VIN: WAUZZZF40LA022846



Vehicle details	
Manufacturer / Type / Model / Equipment	
Audi A4 Avant 40 TDI quattro S tronic	
Vehicle Identification number	WAUZZZF40LA022846
Mileage (Read)	198,404 km
First registration	20 Dec 2019
Number of holders	1
Next periodical technical inspection	01/2027
(Report not on hand)	
Power / Engine displacement	140 kw / 1,968 ccm
Fuel type / Cylinder	Diesel / 4
Gearbox / Number of gears	Automatic / 7
Type of drive	All-wheel drive
Type of vehicle	Station wagon
Colour / colour code	Ibisweiss
Doors / Seats	5 / 5
Upholstery type	Cloth
Colour of upholstery	Light grey
Re/Import	no
Driving readiness	Roadworthy



Vehicle details

Maintenance booklet / proof	digital proof / complete	Next maintenance in	11,600 km
Last maintenance on / at	01/2025 at 180,570 km		
Key is / should be	2 / 2	FZG documents	ZB#2 (B) was available (copy), ZB#1 (S) was not available
		Letter No.	FN567728
Previous damage / Accident	None detectable	Repainting	None detectable
Inspection conditions	sufficient	Lifting equipment / pit	yes
Test drive	Not performed	Engine function test	Performed
Driving readiness	Roadworthy		
Manufacturer key number/ type code number	0588 / BFW 00249		
Emission standard	EURO6;WLTP;DG;PI/CI; M, N1 I	Fine dust sticker	
Permitted total weight	2,230 kg	Empty weight	

Tyres

Mounted tyres

#	Tyre size	Type of tyre	Manufacturer	Tread depth
1)	225/50 R17 98Y	Summer tyres on Light alloy	Pirelli	5mm / 5mm
2)	225/50 R17 98Y	Summer tyres on Light alloy	Pirelli	5mm / 5mm

Replacement

Typ	Tyre size	Type of tyre	Manufacturer	Tread depth
	Tirefit	Expiration date 10/2028		

Legend: Tread depth information for tires on the left is in the first place, for tires on the right is in the second place on the axle in the direction of travel

Equipment

Standard equipment

- AdBlue tank (12 liters)
- Airbag: Front side airbags and head airbag system
- "quattro" all-wheel drive with self-locking center differential
- Traction control (ASR)
- Audi drive select
- Audi pre sense city
- Exterior mirror housings in body color
- Brake light, third raised
- Roof rails black
- Diesel particulate filter (DPF)
- Door sills with aluminum inserts at the front
- Electronic differential lock (EDS)
- Driver Information System
- Electric window lifter
- Radio key, without SafeLock
- Cruise control including speed limiter
- Rear window wiper
- Dimmable interior mirror
- ISOFIX and Top Tether child seat attachment for the outer rear seats
- Fuel tank with increased filling volume (58 l)
- LED rear lights
- Steering column, manually height and axially adjustable
- Front center armrest
- Wheel: Forged aluminum wheels (4 pieces) in 10-spoke design
- Tire repair kit
- Seat covers in fabric index
- Seats: Folding rear seat backrest
- Start-stop system
- Glazing: Windscreen in acoustic glazing
- Electronic immobilizer
- Central locking "Keyless-Go" without safe security
- Airbag for driver and front passenger
- Accent surfaces matt black
- Anti-lock braking system (ABS)
- Audi connect emergency call & service including vehicle control
- Exterior mirrors electrically adjustable and heated
- Vehicle tool kit
- Fabric headliner
- Decorative inlays diamond lacquer silver grey
- tachometer
- Electromechanical parking brake
- Electronic Stabilization Control (ESC)
- Chassis: Standard chassis
- Window sill strips in black (rubber)
- Floor mats front and rear
- Transmission: S tronic 7-speed
- Interior lighting
- Parental controls
- trunk floor mat
- Headrests (5)
- Load compartment cover manually
- LED headlights
- Light/rain sensor
- Non-smoking version
- Radio accessories: 8 speakers (passive) front and rear
- Tire pressure monitoring display
- Power steering, electromechanical
- Seats: Standard seats in the front
- Seats: Front seats manually adjustable
- Bandage material with warning triangle
- Glazing: Heat-insulating glazing tinted green
- Turning loading floor

Extra equipment

- AdBlue tank (24 liters) (larger tank for AdBlue solution to reduce nitrogen oxides in the exhaust gas using the SCR system)
- Audi connect Navigation & Infotainment (Online Points of Interest - Online Traffic Information - Hazard Information - Online Traffic Sign Information - Weather Information - Calendar Access - Wi-Fi Hotspot - Online News - Navigation with Google Earth - Online Search for Navigation Destinations - Online Voice Input - Highly Detailed 3D City Map - On-Street Parking - Online Radio - Hybrid Radio - Traffic Light Information - Personal Profiles)
- Airbag: Rear side airbags
- Pivoting tow bar (mechanically pivoting ball head with electric release - ball bar and ball head made of forged steel - operated via button in the luggage compartment - including trailer stabilization via the Electronic Stability Control (ESC) - the integrated pivoting system socket allows continuous operation of electrical devices in the trailer or caravan while driving)
- Audi pre sense basic (initiates preventive protective measures for the occupants within the system's limits by networking and synchronizing various vehicle systems. In unstable driving conditions, the front seat belts are electrically tensioned. The windows close as needed. The hazard warning lights are activated to warn following traffic.)

- Electrically adjustable, heated, and foldable exterior mirrors, automatically dimming on both sides (including automatic curbside mirror function for the passenger side mirror with integrated LED indicators, including heated windshield washer nozzles. The automatic curbside mirror folds down when reverse gear is engaged, giving the driver a better view of the curb)
- Elimination of model name and performance/technology lettering
- Driver information system with color display (with high-resolution 7" color display - display contents: speed, time, mileage, outside temperature, fuel warning with remaining range, gear shift recommendation, current radio station or music track, radio and media lists, phone menu (in conjunction with multifunction steering wheel), navigation information (if available). On-board computer with short- and long-term memory - including break recommendation)
- Hold Assist (holds the vehicle for an unlimited period of time after stopping on typical uphill and downhill gradients. The system is activated at the touch of a button and allows the driver to pull away comfortably.)
- 3-zone comfort automatic climate control (in addition to the automatic climate control: - climate control panel with large TFT display and capacitive rocker switches - electronically regulates the air temperature and distribution individually for the driver and front passenger - additional climate control panel for adjusting the rear compartment temperature in the rear center console - automatic air recirculation control with dust and odor-separating allergen filter - residual heat utilization)
- Paint finish: Uni
- Steering wheel: Leather-wrapped 3-spoke steering wheel with multifunction plus (The steering wheel impresses with its high-quality appearance and aluminum trim and fits comfortably in the hand. The height and reach of the steering wheel are manually adjustable. For convenient operation of the extensive standard and optional infotainment features, the steering wheel is equipped with 12 multifunction buttons. It also features shift paddles for manual gear changes with automatic transmissions.)
- Child Safety Package (ISOFIX child seat attachment for the front passenger seat with passenger airbag deactivation switch and electric rear child safety lock. The recommended child seats from Audi Genuine Accessories are available from your Audi partner.)
- Wheel: Deselect rolling resistance-optimized tires, removal of speed limit (17 inches) (Tires 225/50 R 17 94Y)
- Rearview camera (facilitates maneuvering by displaying the area behind the vehicle on the MMI display with dynamic and static auxiliary elements. Two modes (perpendicular parking and trailer mode with factory-installed tow bars) can be selected. Depending on the selected mode, the calculated lane as well as auxiliary and guide lines are displayed. The rearview camera is discreetly integrated into the handle bar of the trunk lid. Activated by engaging reverse gear.)
- Parking Aid Plus (Acoustic and visual parking aids at the front and rear assist with parking and maneuvering. With selective, visual display of the distance to detected objects on the MMI display, depending on the current steering angle and direction of travel. The virtual lane indicator also offers lateral guidance lines that are calculated in advance based on the currently selected steering angle. Measurement is performed by ultrasonic sensors discreetly integrated into the bumpers.)
- High Beam Assistant (within the system's limits, it automatically detects the headlights of oncoming traffic, the taillights of other road users, and light sources in built-up areas. Depending on the traffic situation, the high beam is automatically switched on or off. The system thus improves the driver's visibility and increases comfort.)
- Camera-based traffic sign recognition (Camera-based detection and display of no-overtaking signs and speed limits, including temporary speed displays (e.g., on motorways). In addition, a situation-dependent evaluation is performed within the system limits in wet conditions, fog, towing, and daytime-dependent speed limits. The system is purely informative.)
- Comfort center armrest in the front (adjustable in inclination and longitudinally movable)
- Convenience key with sensor-controlled trunk release including electrically operated trunk lid opening/closing (including visual differentiation on the top and bottom of the key; access authorization system. The vehicle key only needs to be carried with you; the vehicle can be locked and unlocked from the outside via sensors on all door handles. The trunk lid can also be opened when the vehicle is locked. Additionally, a foot gesture (kick motion) below the rear bumper unlocks the trunk lid and allows it to swing open automatically.)
- Business package (MMI navigation plus with MMI touch (including driver information system with color display) - Audi phone box - 3-spoke leather steering wheel with multifunction plus - Heated front seats - Frameless, automatically dimming interior mirror - Electrically adjustable, heated, and folding exterior mirrors with automatic dimming on both sides - Rear parking aid - High beam assistant - Manual sunblind for the rear door windows)
- Radio accessories: Digital radio reception (DAB) (in addition to the analogue station selection, reception of digitally broadcast radio stations according to the DAB standard, including DAB+ and DMB audio. Display of program information (e.g., artist, title) as well as additional information in the form of a slideshow (e.g., cover art, weather). A second DAB tuner with a second DAB antenna continuously searches for alternative reception frequencies for the selected station, simultaneously updating the station list.)
- Front seat heating (heats seat and backrest center panels; with leather upholstery, sports seats, and S-sport seats, also seat side bolsters - individually adjustable in multiple stages for driver and passenger side using the climate control panel)



- Seats: Lumbar support for the front seats, pneumatically adjustable, with massage function (pneumatic lumbar support via three lumbar bladders, which provide good support in the lumbar region through targeted ventilation and de-ventilation - with massage function: This is controlled via the multifunction switch or via MMI - one massage lasts approximately 10 minutes)

Brief expert findings

Documents submitted	At the time of the inspection, the registration certificate Part 2 (letter) was available, but the registration certificate Part 1 (certificate) was not. (Copy)
VIN comparison	The vehicle identification number (VIN) was read from the vehicle and its conformity with the submitted documents was verified during the inspection by the undersigned.
Inspection	The inspection conditions were sufficient for the assessment of the vehicle. Lifting equipment and a pit were available for examining the vehicle.
Test drive	No test drive/maneuvering was carried out during the inspection of the vehicle.
Engine function test	An engine test run was performed.
Driving readiness	The vehicle was drivable at the time of inspection.

Value reducing factors

No.	Component group	Description
1	Rear bumper	Rear bumper - Scratched - Smart repair
2	Front bumper	Front bumper - Scratched - Smart repair
3	Cab	Sun visor (Tür hinten links) - Deformed - Replace

Wear and tear

No.	Component group	Description
1	Vehicle glazing	Windscreen - Stone chips - No deduction
2	Bonnet	Bonnet - Stone chips - No deduction
3	Interior	Interior - Scratch(es) - No deduction
4	Side panel - rear left side	Side panel - dent(s) - No deduction

The vehicle shows signs of wear commensurate with its age and use.

Order/Scope of order

The order was placed to prepare a sales report for the vehicle described. This includes the following:

- Description of core relevant information about the vehicle
- Documentation of equipment features
(*Delivery by third-party service providers*)
- Documentation of damage, defects, missing parts
- Documentation of previous damage, unrepaired previous damage, repainting
- a brief visual or functional inspection of the equipment details if possible.
(*Functional tests of driver assistance systems are not included in the scope of services!*)
- a photo documentation of the vehicle



Basis for the order

This product is based on the Alphabet Fuhrpark GmbH guidelines for vehicle returns and valuations. The expert makes the explicit findings in each individual case objectively within the framework of the specified standards based on his or her own expertise.

The vehicle inspection takes place in a disassembled state.

Damage or defects that can only be detected during disassembly/diagnosis work or through advanced knowledge remain within the scope of the prognosis risk. An extended risk exists for concealed defects caused by fraudulent deception and not identifiable by the expert.

Damage or defects resulting from normal use or wear and tear of the vehicle will be accepted according to the applicable standard.

There was no explicit identification or monetary consideration of the expected features within the product.

Features which in their nature and severity slightly exceed normal use but do not constitute unacceptable damage will be documented and identified under signs of use if necessary.

Damage or defects which, according to the underlying standard, can no longer be attributed to normal use or wear and tear are listed in the product under "Depreciating Factors".

Depending on the product specification, a monetary ID can be provided. If this takes place, the costs can be 100% d or pro rata depending on the vehicle's age and mileage.

Previous damages

Apparently, no repaired previous damage could be found on the vehicle.



Figure 1: Diagonal front (left)



Figure 2: Diagonal front (right)



Figure 3: Diagonal rear (left)



Figure 4: Diagonal rear (right)



Figure 5: Interior - front



Figure 6: Interior - rear



Figure 7: Instrument cluster



Figure 8: Instrument panel



Figure 9: interior 360° view



Figure 10: Cargo area

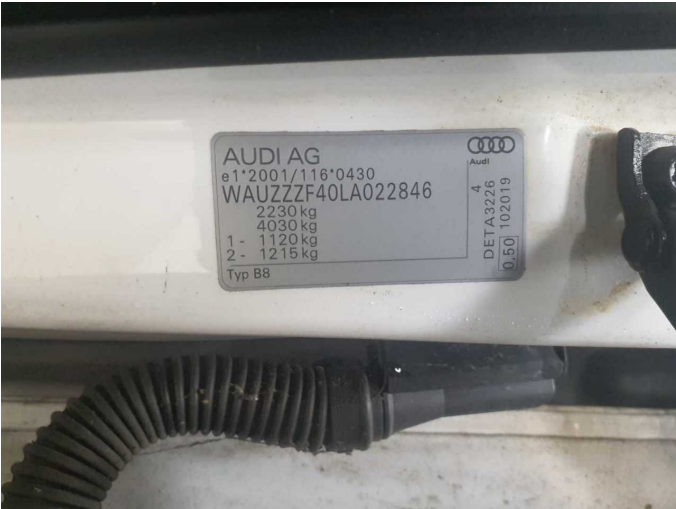


Figure 11: VIN



Figure 12: Mounted tyres

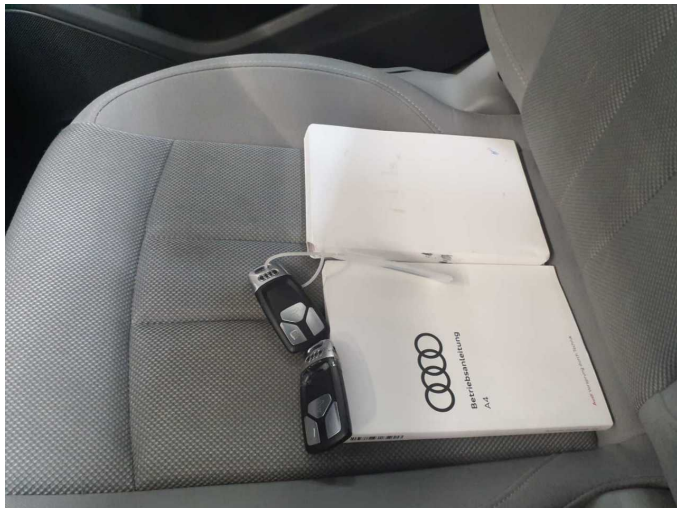


Figure 13: Documents

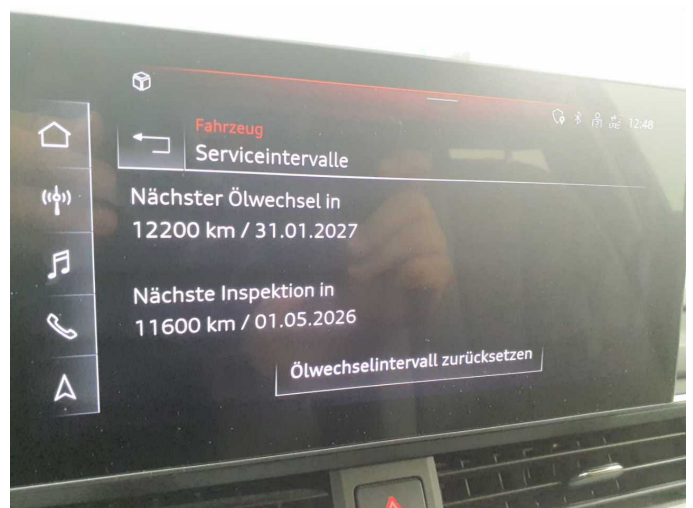


Figure 14: Documents



Figure 15: Navigation



Figure 16: Misc.

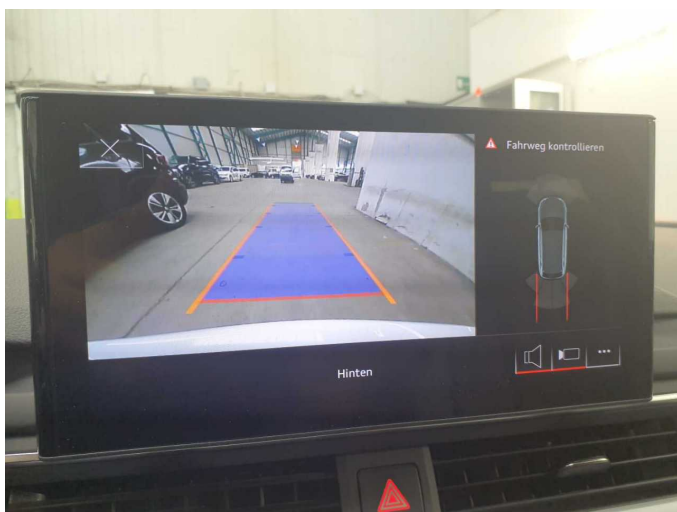


Figure 17: Misc.



Figure 18: Misc.



Figure 19: Misc.



Figure 20: Misc.



Figure 21: Misc.



Figure 22: Misc.



Figure 23: Misc.



Figure 24: Misc.



Figure 25: Misc.

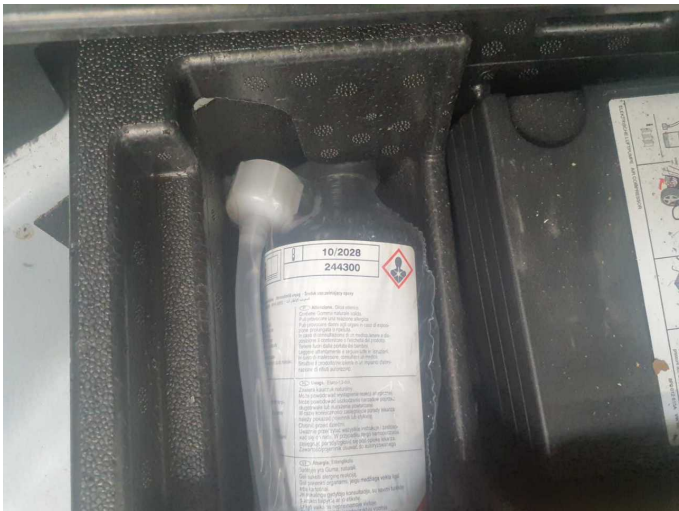


Figure 26: Misc.

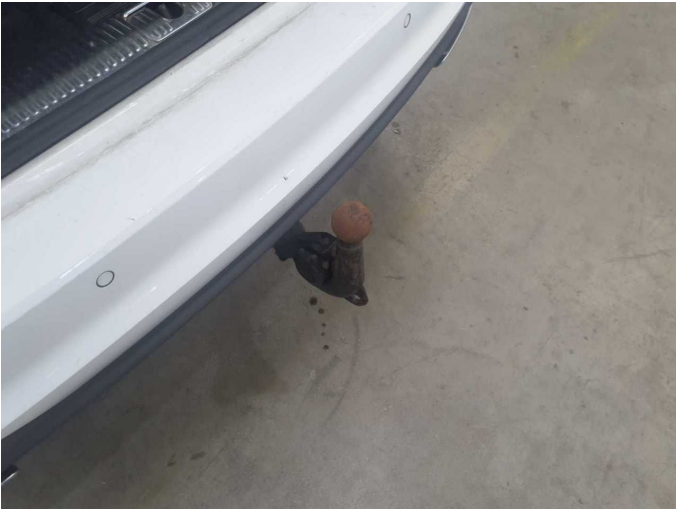


Figure 27: Misc.



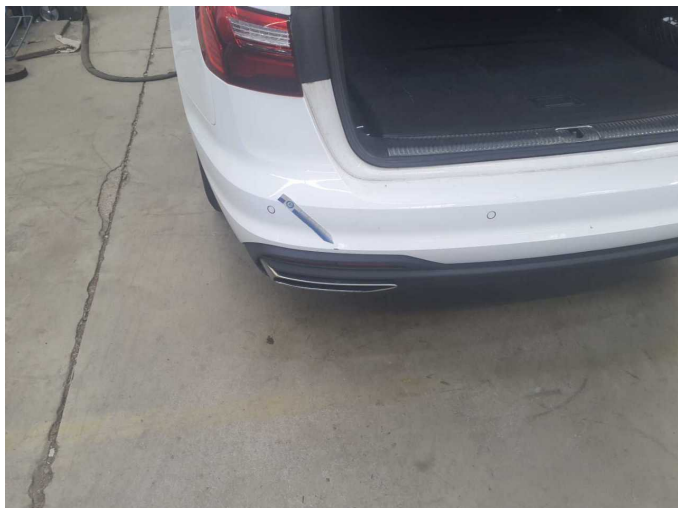
Figure 28: Misc.



Figure 29: Misc.



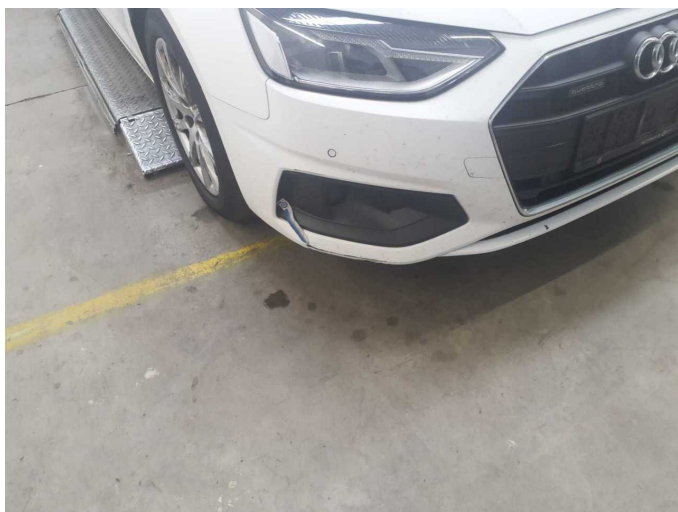
Figure 30: Misc.



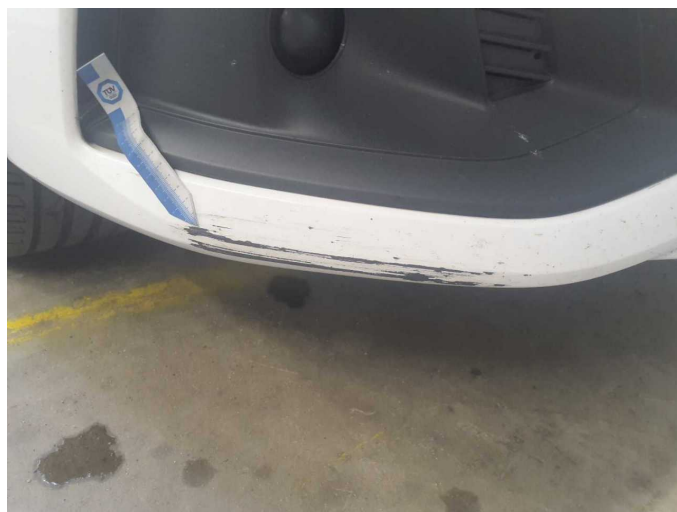
Damage 1: Rear bumper: Rear bumper - Scratched - Smart repair



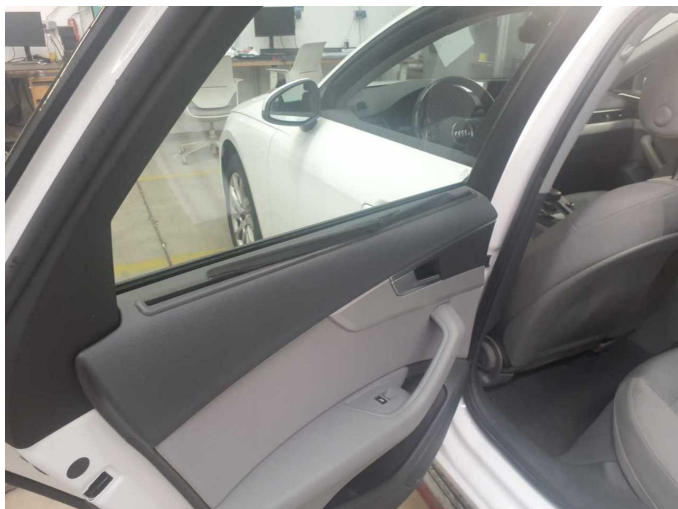
Damage 1: Rear bumper: Rear bumper - Scratched - Smart repair



Damage 2: Front bumper: Front bumper - Scratched - Smart repair



Damage 2: Front bumper: Front bumper - Scratched - Smart repair



Damage 3: Cab: Sun visor (Tür hinten links) - Deformed - Replace



Damage 3: Cab: Sun visor (Tür hinten links) - Deformed - Replace



Wartungshistorie

(gemäß Auftraggeber Informationen)

Fahrgestellnummer: WAUZZZF40LA022846
Hersteller / Modell: AUDI AUDI A4 Avant 40 TDI quattro S tronic

Datum	KM-Stand	Beschreibung
31.01.2025	180.570	AU; Getriebeöl ern/prüfen; Kraftstofffilter ern; Luftfiltereinsatz ern; Motoröl b. Wartung; Ölfilter ern; Regelwartungsdienst; Reparatur Sonstiges; Systemtest/Eigendiagnose; Wartung Sonstiges
16.05.2024	150.897	Bremsflüssigkeit; Bremsflüssigkeit ern; Motoröl b. Wartung; Ölfilter ern; Regelwartungsdienst; Wartung Sonstiges
22.06.2023	119.699	Bremsbelagfühler ern; Bremse Sonstiges; Bremsklötze hinten; Bremsklötze vorne; Bremsscheiben hinten; Bremsscheiben vorne; Getriebeöl ern/prüfen; Kraftstofffilter ern; Motoröl b. Wartung; Ölfilter ern; Regelwartungsdienst; Reparatur Sonstiges; Wartung Sonstiges
21.09.2022	89.847	Bremsbelagfühler ern; Bremse Sonstiges; Bremsklötze hinten; Bremsklötze vorne; Luftfiltereinsatz ern; Motoröl b. Wartung; Ölfilter ern; Regelwartungsdienst; Wartung Sonstiges
17.01.2022	59.266	Bremsflüssigkeit; Bremsflüssigkeit ern; Getriebeöl ern/prüfen; Kraftstofffilter ern; Motoröl b. Wartung; Ölfilter ern; Regelwartungsdienst; Wartung Sonstiges
08.03.2021	29.669	Motoröl b. Wartung; Ölfilter ern; Regelwartungsdienst; Wartung Sonstiges