



AUDI Q3 Sportback

Q3 45 TFSIe Sportback S tronic

VIN NO WAUZZZF30N1123427
Registration Number 30N1123427



MOT Date	Number of Owners	Number of Keys	Odometer Reading
-	1	2	29816 km
Last Service	Last Service Mileage	First Registration Date	Country First Registered
2022-05-09	1	2022-06-01	-

Inspection Report Summary

Customer	BCA Online	Report Number	P20250905113410
Inspection Date / Place	2025-09-05 / Extern	Cosmetic Grade	2

Vehicle Summary

Vehicle Condition	Runner	VAT Type	Qualifying
Fuel Type	Plug - in Hybrid Electric Vehicle Petrol	Road Worthy	Yes
Colour	Black	Engine Size (cc)	1395
Engine Size	1.4	No of Doors	5
Body Type	SUV	Drive Train	Front
Seat Colour		No of Seats	5
Seat Covering Name	Schwarz	Seat Covering	Cloth/Synthetic Leather
Charging Cables	OUC + Type 2	NEDC CO2 Rating (q/km)	42
Gearbox Type	Automatic		

Vehicle History & Documents

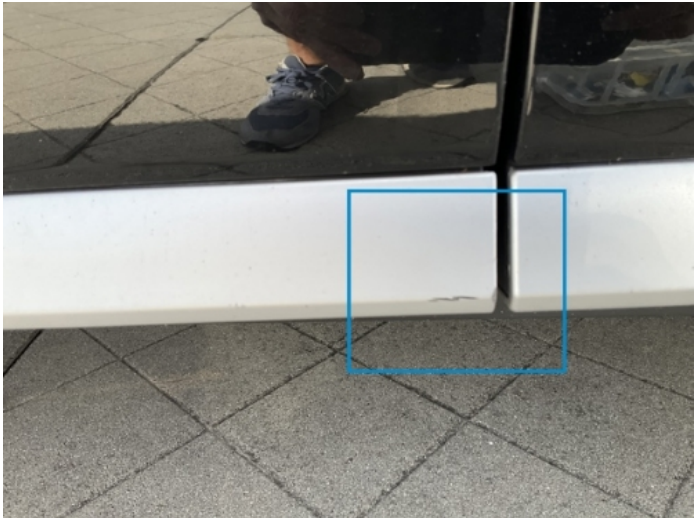
Service Book Available	Computer Print Out Available	Next Service Mileage	km
Previous Usage		Imported	No
Manufacturer Warrenty			







Service-Nachweis	
Komplettnachweis	
Fahrzeuginformationen	
Fahrgestellnummer	WAUZZZF30N1123427
Typbezeichnung	Q3 55 PHEV 1.4 R4180 DSG
Datum der Auslieferung	
Anschlussgarantie	Vertragsende 2025-04-27
	Laufleistung 30000 km
Übergabe-Inspektion	
Datum	2022-05-09
Laufleistung	1 km
Auftragsnummer	893538-00
Durchgeführt von	Schmidt + Koch AZ Bremen
	Stresemannstraße 11
	28207 Bremen
	Deutschland
Autorisierter Audi Service Partner	Ja



Equipment

Traffic sign recognition	360° camera	Alloys wheels	Anti-lock braking
Blind spot assist	Cruise control	Digital dashboard	Front parking sensors
Heated wing mirrors	Remote adjusting wing mirrors	Reversing Camera	Split folding rear seats
Distance warning system	Electric tailgate	Lane assist	LED Headlamps
Rain sensitive windscreen wipers	Trip Computer	Airbag Status	Android Auto
Apple CarPlay	Bluetooth telephone interface	Digital Radio	Fatigue warning system
Headlamp wash/wipe	Parking Assistance	Remote central locking	Satellite navigation
Stability control	Electrically folding wing mirrors	Emergency brake assist	Leather steering wheel
Radio	Rear parking sensors		

Equipment Details

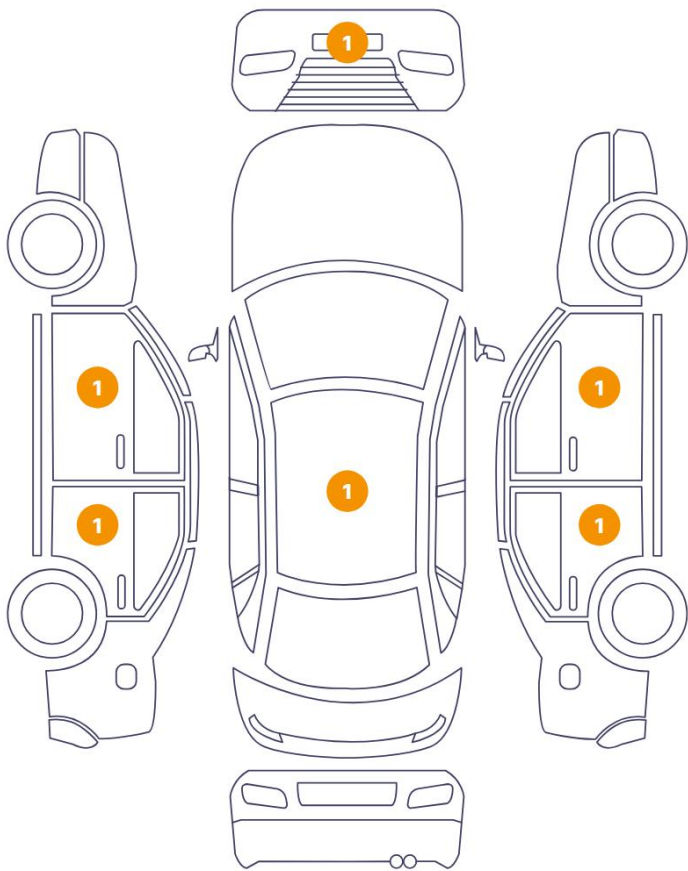
Air Conditioning	Dual Zone Climate Control	Alloy Wheel Size	18
Seat Heating	Front		

Wheels & Tyres

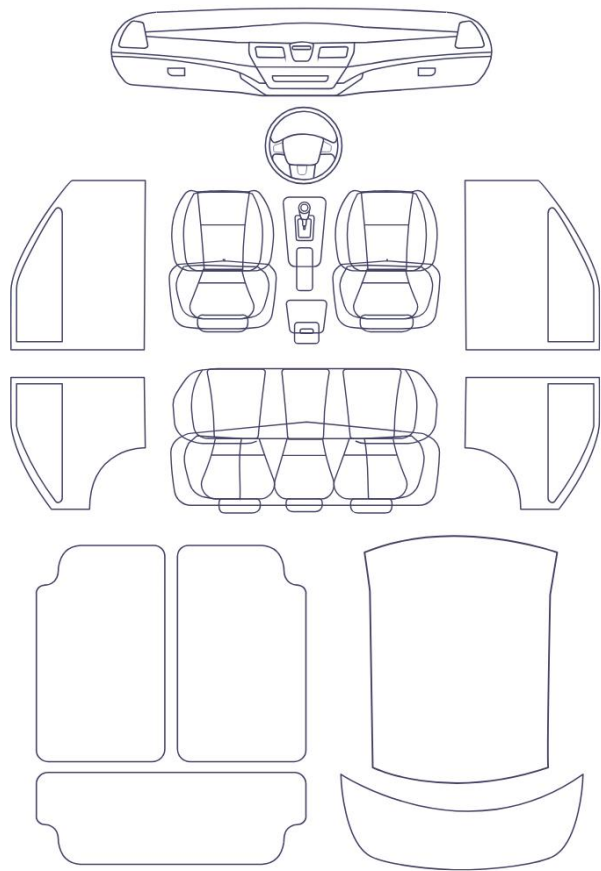
Left Rear Tyre Depth	8	Right Rear Tyre Depth	8
Left Front Tyre Depth	7	Right Front Tyre Depth	7

Cosmetic Damage

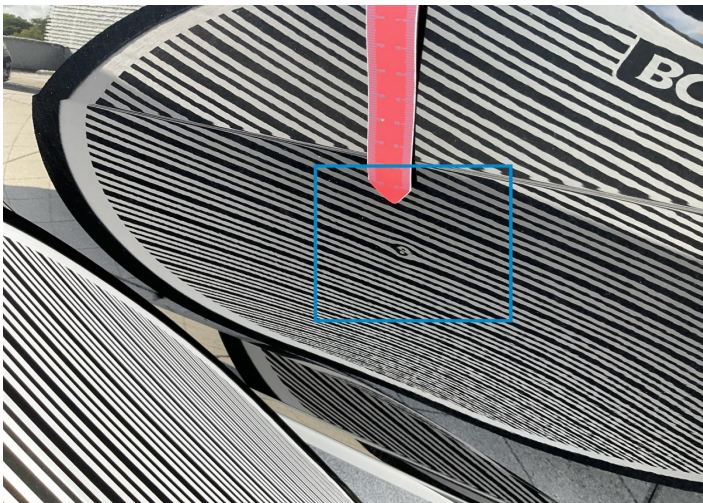
6 Schäden



0 Schäden



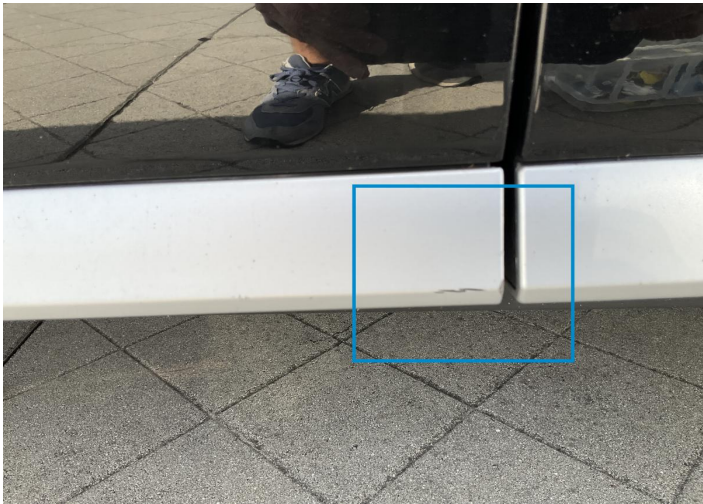
Component		Damage	Comments
1	Door / Back Left	Bodywork / Dent / Dent	
2	Roof	Bodywork / Dent / Dent	
3	Door / Front Left	Paint / Scratch / Scuff	
4	Mirror / Front Right	Paint / Scratch / Scuff	
5	Door / Back Right	Paint / Scratch / Scuff	
6	Bumper / Front	Paint / Scratch / Scuff	



1. Door / Back Left
Bodywork / Dent / Dent -



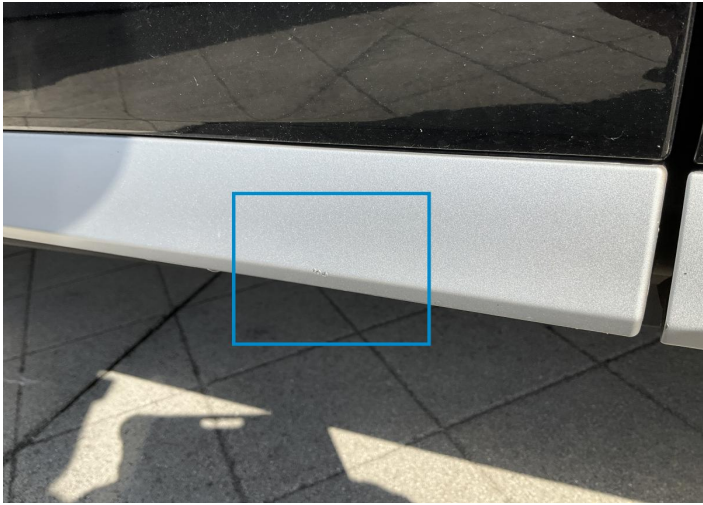
2. Roof
Bodywork / Dent / Dent -



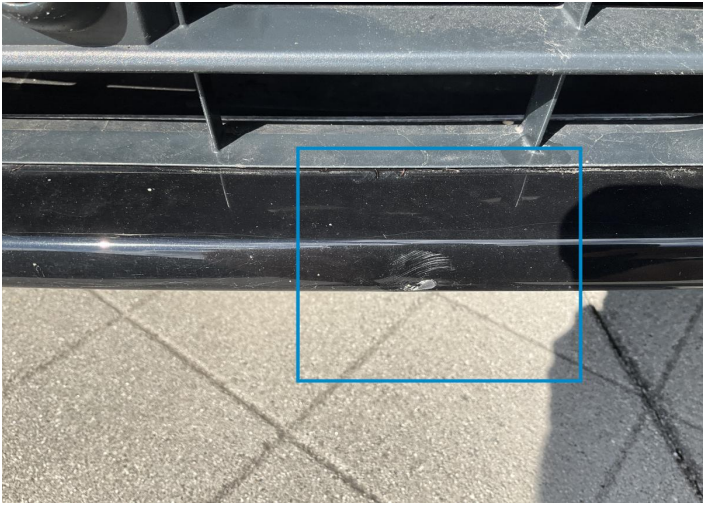
3. Door / Front Left
Paint / Scratch / Scuff -



4. Mirror / Front Right
Paint / Scratch / Scuff -



5. Door / Back Right
Paint / Scratch / Scuff -



6. Bumper / Front
Paint / Scratch / Scuff -

Mechanical Condition

Equipments Test

Central Locking	✓	Electric Windows	✓
Navigation System	✓	Audio Equipment	✓
AC / Heating System	✓	Main & Spare Keys Functioning	✓
Parking Sensors / Cameras Functioning	✓	Other Equipments	✓

Control Lights

ABS Warning Light	✓	ESP Fault/Traction Control Malfunction Light	✓
Airbag Warning Light	✓	Oil Pressure Warning Light	✓
Brake Warning Light	✓	Power Steering Warning Light	✓
Alternator / Battery	✓	No Dashboard Lights	✓
Display Defect	✓	Service Light	✓
Tire Pressure Monitoring System	✓		

Engine

Engine Status / EML	✓	Engine Leak Visible	✓
Engine Starts	✓		

Gearbox

Gear Box	✓
----------	---

Levels

Brakes Fluid	✓	Coolant Fluid	✓
--------------	---	---------------	---

Hybrid/EV

Charge Lead Condition	✓	Charge Port Condition	✓
Hybrid System Fault	✓		

Test Drive Inspection

Steering Wheel			
Steering Noise / Anomaly		✓	
Engine			
Engine Noise	✓	The Gears Scratch / Skip / Abnormal Operation	✓
Fume Quantity	✓	Power Loss	✓
Brake			
Brake System Anomaly		✓	
General			
Test Driven Status		✓	
✓ <i>No troubles detected, good condition or correct tests, according to vehicle age and mileage</i>			
! <i>Damages or malfunction detected that requires repairs by the buyer</i>			
NA <i>Not applicable</i>			
= <i>Not tested</i>			

Disclaimer

Please also note the "UserGuide condition report", which shows the scope of the vehicle description.

[User Guide](#)