



Expertise

Protocol number: 41164758  
Order No. / Reference: 25103147  
Inspection date: 20 Aug 2025

Manufacturer: Audi  
VIN: WAUZZZF2XNN018927

Model: A6 55 TFSI e quattro S tronic sport



Vehicle details	
Manufacturer / Type / Model / Equipment	
Audi A6 55 TFSI e quattro S tronic sport	
Vehicle Identification number	WAUZZZF2XNN018927
Mileage (Read)	140,558 km
First registration	18 Jan 2022
Number of holders	1
Next periodical technical inspection	01/2027
(Report on hand)	
Power / Engine displacement	195 kw / 1,984 ccm
Fuel type / Cylinder	Hybr.B/E ext. edition / 4
Gearbox / Number of gears	Automatic / 7
Type of drive	All-wheel drive
Type of vehicle	Saloon car
Colour / colour code	Gletscherweiss Metallic
Doors / Seats	4 / 5
Upholstery type	Leather
Colour of upholstery	Black



## Vehicle details

<b>Maintenance booklet / proof</b>	digital proof / complete	<b>Next maintenance in</b>	2,500 km
<b>Last maintenance on / at</b>	06/2025 at 136,809 km		
<b>Key is / should be</b>	2 / 2	<b>FZG documents</b>	ZB#2 (B) was available (copy), ZB#1 (S) was not available
		<b>Letter No.</b>	GF425301
<b>Previous damage / Accident</b>	Detectable	<b>Repainting</b>	Detectable
<b>Inspection conditions</b>	sufficient	<b>Lifting equipment / pit</b>	yes
<b>Test drive</b>	Not performed	<b>Engine function test</b>	Performed
<b>Manufacturer key number/ type code number</b>	0588 / BZD 00100		
<b>Emission standard</b>	EURO6;WLTP;AP;PI/CI; M, N1 I	<b>Fine dust sticker</b>	
<b>Permitted total weight</b>	2,610 kg	<b>Empty weight</b>	

## Tyres

### Mounted tyres

#	Tyre size	Type of tyre	Manufacturer	Tread depth
1)	245/45 R19 102Y	Summer tyres on Light alloy	Pirelli	6mm / 6mm
2)	245/45 R19 102Y	Summer tyres on Light alloy	Pirelli	6mm / 6mm

### Additional tyres

#	Tyre size	Type of tyre	Manufacturer	Tread depth
1)	225/55 R18 102V	Winter tyres on Light alloy	Pirelli	0mm / 0mm
2)	225/55 R18 102V	Winter tyres on Light alloy	Pirelli	5mm / 5mm

**Legend:** Tread depth information for tires on the left is in the first place, for tires on the right is in the second place on the axle in the direction of travel

## Equipment

### Standard equipment

- |  |  |
|--|--|
| <ul style="list-style-type: none"> <li>• Airbag for driver and front passenger</li> <li>• Acoustic vehicle warning system</li> <li>• Anti-lock braking system (ABS)</li> <li>• Audi connect emergency call &amp; service m.connect Remote &amp; Control (TFSI e)</li> <li>• Audi virtual cockpit</li> <li>• Exterior mirror housing in black</li> <li>• Brake calipers, painted red</li> <li>• Decorative inlay in matt brushed dark aluminum</li> <li>• e-tron charging system compact</li> <li>• Electronic Stabilization Control (ESC)</li> <li>• Chassis: Sports suspension</li> <li>• Automatically opening luggage compartment lid/manually opening luggage compartment lid</li> <li>• Interior lighting</li> <li>• ISOFIX and Top Tether child seat attachment for the outer rear seats</li> <li>• AC Type 2 charging socket</li> <li>• LED headlights Matrix and LED taillights and headlight cleaning system</li> <li>• Steering column, manually height and axially adjustable</li> <li>• Front center armrest</li> <li>• Gasoline particulate filter</li> <li>• Black optics package</li> <li>• Progressive steering</li> <li>• Wheel: Tire pressure monitoring indicator</li> <li>• Wheel: Tire repair kit</li> <li>• Radio accessories: Audi sound system</li> <li>• Seats: 4-way lumbar support</li> <li>• Seats: Rear seat backrest, split folding</li> <li>• Sun visor on driver and passenger side</li> <li>• Parking air conditioning</li> <li>• Phone: Audi smartphone interface</li> <li>• Glazing: Privacy glazing (tinted windows)</li> <li>• Heat-insulating glazing on the sides and rear</li> </ul> | <ul style="list-style-type: none"> <li>• Airbag: Front side airbags and head airbag system</li> <li>• All-wheel drive "quattro" with ultra technology</li> <li>• Audi connect navigation &amp; infotainment</li> <li>• Audi drive select</li> <li>• Audi pre sense front</li> <li>• Exterior mirrors electrically adjustable and heated</li> <li>• Brake light, third</li> <li>• Headlining fabric</li> <li>• tachometer</li> <li>• Door sills with aluminum inlay front and rear, illuminated</li> <li>• Driver information system with color display</li> <li>• radio key</li> <li>• Cruise control including speed limiter</li> <li>• Transmission: S tronic 7-speed</li> <li>• Dimmable interior mirror</li> <li>• 4-zone comfort automatic climate control</li> <li>• Headrests (4)</li> <li>• Charging cable Mode 3</li> <li>• Steering wheel: 3-spoke leather sports contour steering wheel with multifunction and shift paddles, flattened bottom</li> <li>• MMI navigation with MMI touch response</li> <li>• Non-smoking package</li> <li>• Pedals and footrest in stainless steel</li> <li>• Wheel: Light alloy wheels, multi-spoke design, contrasting grey, partially polished</li> <li>• Radio: MMI Radio plus with MMI touch response</li> <li>• Seat covers in microfiber Dinamica frequency/leather combination with S embossing</li> <li>• Seats: Front sports seats</li> <li>• Lane Departure Warning</li> <li>• Start-stop system</li> <li>• Glazing: Windscreen in thermal insulation glazing</li> <li>• Electronic immobilizer</li> <li>• Central locking</li> </ul> |
|--|--|

### Extra equipment

- |  |  |
|--|--|
| <ul style="list-style-type: none"> <li>• Swiveling trailer coupling with electric release (with swiveling ball head, trailer stabilisation via the electronic stabilisation control (ESC), release via button in the luggage compartment, the integrated, swivelling system socket enables continuous operation of electrical devices in the trailer or caravan while driving)</li> <li>• Head-up display (projects the speed and other driver-relevant information from optional equipment such as assistance systems and navigation, as well as warnings, into the driver's direct field of vision; height adjustable; enables high-contrast, multi-color display with reduced distraction from the road)</li> </ul> | <ul style="list-style-type: none"> <li>• Anti-theft alarm system (monitors doors, hood, and trunk lid. Safelock prevents the doors from being opened from the inside once the vehicle has been locked with the key. The anti-theft alarm system also offers: - switchable interior monitoring - towing protection via tilt angle sensor - horn independent of the vehicle's voltage - Safelock)</li> <li>• Paint finish: metallic</li> </ul> |
|--|--|



- Steering wheel: 3-spoke leather steering wheel with multifunction plus, shift paddles, and heated steering wheel (height and distance of the steering wheel are manually adjustable - leather of the steering wheel and gear selector knob is color-coordinated with the selected color of the dashboard top - 12 multifunction buttons for convenient operation of the available infotainment features - shift paddles for manual gear changes)
- Panoramic glass roof (extra-large, tinted glass surface for a progressive design, electric operation for opening and raising, including an electrically operated, light-tight sun blind, convenient opening and closing from the outside via the remote key ensures a pleasant, light-flooded interior, improved interior climate through efficient ventilation, integrated wind deflector reduces wind noise when the roof is open)
- Radio accessories: Bang & Olufsen Premium Sound System with 3D sound (sound reproduction through 16 loudspeakers including 3D sound loudspeaker, center speaker and subwoofer, 15-channel amplifier with a total output of 705 watts; spatial sound reproduction through the 3D sound feature for the front seats. This is generated by additional loudspeakers in the A-pillar, the midrange speakers and the Fraunhofer Symphoria technology. The 3D sound can be reproduced with all sources.)
- LED headlights: HD Matrix LED headlights with dynamic indicators (daytime running lights, low beam, high beam, position light, indicator light, cornering light, all-weather light, motorway light, cornering light, automatic headlight range control, intersection light, headlight cleaning system, LED rear lights with dynamic light staging and dynamic indicators)
- Ambient lighting package (in addition to the standard interior lighting: - Ambient fabric lighting of the front/rear doors - Approach lighting from the outside door handles at the front/rear - Ambient lighting of the instrument panel)
- Business Package (Tour Assistance Package Adaptive Driving Assistant supports the driver with acceleration, braking, maintaining speed and distance, and lane guidance. Adaptive Cruise Control, Cruise Control, Efficiency Assistant supports the driver with predictive parking. Parking aid plus 4-zone automatic climate control. Heated front seats. Audi phone box. Automatically dimming interior mirror. Automatically dimming exterior mirror. Adaptive windshield wipers with integrated washer nozzles. High beam assistant.)
- Rear view camera (The rear view camera shows the detection area behind the vehicle in the upper display. Dynamic display elements such as a lane calculated based on the steering angle support parking or maneuvering.)
- Seat upholstery in Valcona leather with S-embossing for sports seats (seat center panels, seat side bolsters, headrests, and front center armrest in Valcona leather, black or rotor gray with contrasting stitching; door panel inserts in Alcantara, black, with S-embossing in the front seat backrests)

## Brief expert findings

Documents submitted	At the time of the inspection, the registration certificate Part 2 (letter) was available, but the registration certificate Part 1 (certificate) was not. (Copy)
VIN comparison	The vehicle identification number (VIN) was read from the vehicle and its conformity with the submitted documents was verified during the inspection by the undersigned.
Inspection	The inspection conditions were sufficient for the assessment of the vehicle. Lifting equipment and a pit were available for examining the vehicle.
Test drive	No test drive/maneuvering was carried out during the inspection of the vehicle.
Engine function test	An engine test run was performed.

## Value reducing factors

No.	Component group	Description
1	Wheel / tyres	Alloy rim - rear left side - Scratched - Loss in value
2	Wheel / tyres	Alloy rim - front right side - Scratched - Loss in value
3	Rear bumper	Rear bumper - Scratch(es) - Paint

## Wear and tear

No.	Component group	Description
1	Door - front right side	Door edge - Scratch(es) - No deduction
2	Front bumper	Front bumper - Stone chips - No deduction



No.	Component group	Description
3	Bonnet	Bonnet - Stone chips - No deduction
4	Vehicle glazing	Windscreen - Stone chips - No deduction
5	Roof	Roof - dent(s) - No deduction

The vehicle shows signs of wear commensurate with its age and use.

## Missing parts

### Description

Equipment - Tirefit complete

## Previous damages

No.	Previous damage	Extent of damage (Net)
1	Front, Provided by user / customer, from 30 May 2024	812,00 €

## Repainting

### No. Repainting

1 Bonnet, Professionally carried out, Invoice of repair done Non-existent

## Paint coat thickness measurement

Bonnet 377 µm |

## Order/Scope of order

The order was placed to prepare a sales report for the vehicle described. This includes the following:

- Description of core relevant information about the vehicle
- Documentation of equipment features  
(Delivery by third-party service providers)
- Documentation of damage, defects, missing parts
- Documentation of previous damage, unrepaired previous damage, repainting
- a brief visual or functional inspection of the equipment details if possible.  
(Functional tests of driver assistance systems are not included in the scope of services!)
- a photo documentation of the vehicle



## Basis for the order

This product is based on the Alphabet Fuhrpark GmbH guidelines for vehicle returns and valuations. The expert makes the explicit findings in each individual case objectively within the framework of the specified standards based on his or her own expertise.

The vehicle inspection takes place in a disassembled state.

Damage or defects that can only be detected during disassembly/diagnosis work or through advanced knowledge remain within the scope of the prognosis risk. An extended risk exists for concealed defects caused by fraudulent deception and not identifiable by the expert.

Damage or defects resulting from normal use or wear and tear of the vehicle will be accepted according to the applicable standard.

There was no explicit identification or monetary consideration of the expected features within the product.

Features which in their nature and severity slightly exceed normal use but do not constitute unacceptable damage will be documented and identified under signs of use if necessary.

Damage or defects which, according to the underlying standard, can no longer be attributed to normal use or wear and tear are listed in the product under "Depreciating Factors".

Depending on the product specification, a monetary ID can be provided. If this takes place, the costs can be 100% d or pro rata depending on the vehicle's age and mileage.

## Previous damages

According to available information previous damages were repaired at the vehicle. Traces of repairs, which allow conclusions about the area of repair, were not recognizable during the inspection.

## Comments

- Winterradsatz ist kein Bestandteil des Auslieferumfangs.





Figure 1: Diagonal front (left)



Figure 2: Diagonal front (right)



Figure 3: Diagonal rear (left)



Figure 4: Diagonal rear (right)



Figure 5: Interior - front



Figure 6: Interior - rear





Figure 7: Instrument cluster



Figure 8: Instrument panel



Figure 9: interior 360° view ([Online link](#))



Figure 10: Cargo area

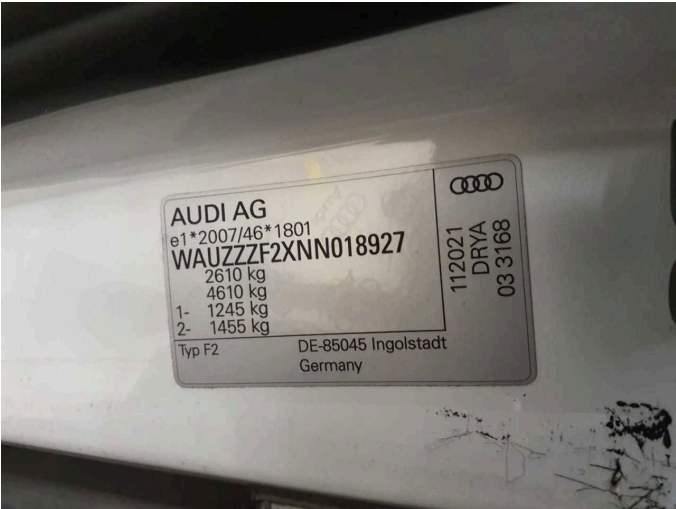


Figure 11: VIN



Figure 12: Mounted tyres





Figure 13: Documents



Figure 14: Documents



Figure 15: Additional tyres



Figure 16: Navigation



Figure 17: Misc.



Figure 18: Misc.





Figure 19: Misc.

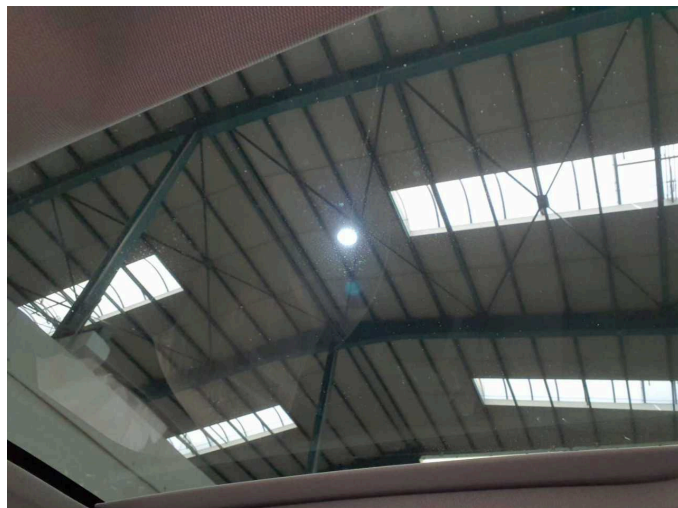


Figure 20: Misc.



Figure 21: Misc.

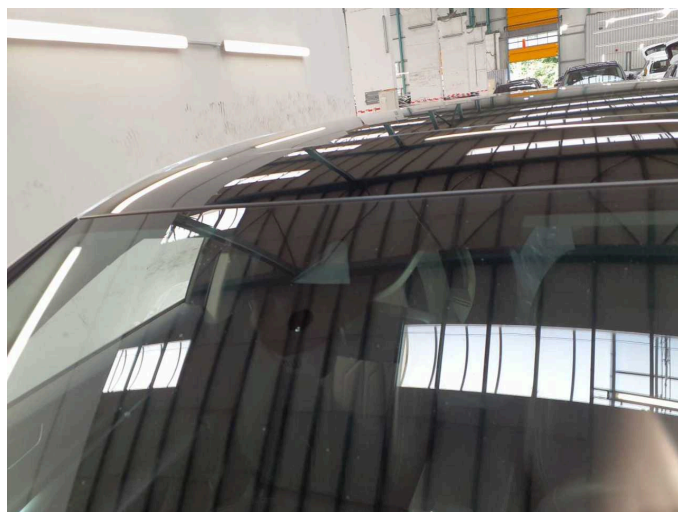


Figure 22: Misc.



Figure 23: Misc.



Figure 24: Misc.





Figure 25: Misc.



Figure 26: Misc.



Figure 27: Misc.



Figure 28: Misc.



Figure 29: Misc.



Figure 30: Misc.





**Damage 1:** Wheel / tyres: Alloy rim - rear left side - Scratched - Loss in value



**Damage 1:** Wheel / tyres: Alloy rim - rear left side - Scratched - Loss in value



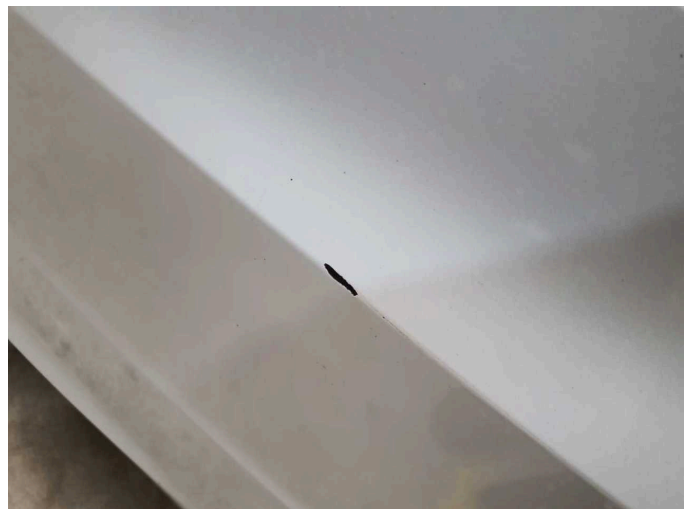
**Damage 2:** Wheel / tyres: Alloy rim - front right side - Scratched - Loss in value



**Damage 2:** Wheel / tyres: Alloy rim - front right side - Scratched - Loss in value



**Damage 3:** Rear bumper: Rear bumper - Scratch(es) - Paint



**Damage 3:** Rear bumper: Rear bumper - Scratch(es) - Paint





**Damage 3:** Rear bumper: Rear bumper - Scratch(es) - Paint



**Damage 3:** Rear bumper: Rear bumper - Scratch(es) - Paint



**Wear and tear 5:** Roof: Roof - dent(s) - No deduction



**Wear and tear 5:** Roof: Roof - dent(s) - No deduction



**Repainting 1:** Bonnet



**Repainting 1:** Bonnet



# Wartungshistorie

(gemäß Auftraggeber Informationen)

Fahrgestellnummer: WAUZZZF2XNN018927  
Hersteller / Modell: AUDI AUDI A6 55 TFSI e quattro S tronic sport

Datum	KM-Stand	Beschreibung
11.06.2025	136.809	Motoröl b. Wartung; Ölfilter ern; Ölwechsel; Wartung Sonstiges
21.01.2025	123.235	AU
12.09.2024	113.087	Getriebeöl ern/prüfen; Motoröl b. Wartung; Ölfilter ern; Regelwartungsdienst; Wartung Sonstiges; Zündkerzen ern
13.03.2024	89.447	Motoröl b. Wartung; Ölfilter ern; Ölwechsel; Wartung Sonstiges
19.01.2024	84.709	Bremsbelagfühler ern; Bremse Sonstiges; Bremsflüssigkeit; Bremsflüssigkeit ern; Bremsklötze vorne; Bremsscheiben vorne; Luftfiltereinsatz ern
15.09.2023	71.768	Bremsbelagfühler ern; Bremse Sonstiges; Bremsklötze hinten; Bremsscheiben hinten; Motoröl b. Wartung; Ölfilter ern; Ölwechsel; Wartung Sonstiges
16.05.2023	58.421	Getriebeöl ern/prüfen; Regelwartungsdienst; Wartung Sonstiges; Zündkerzen ern
24.03.2023	47.732	Motoröl b. Wartung; Ölfilter ern; Ölwechsel; Wartung Sonstiges
05.10.2022	28.968	Regelwartungsdienst; Wartung Sonstiges
19.08.2022	23.343	Motoröl b. Wartung; Ölfilter ern; Ölwechsel; Wartung Sonstiges